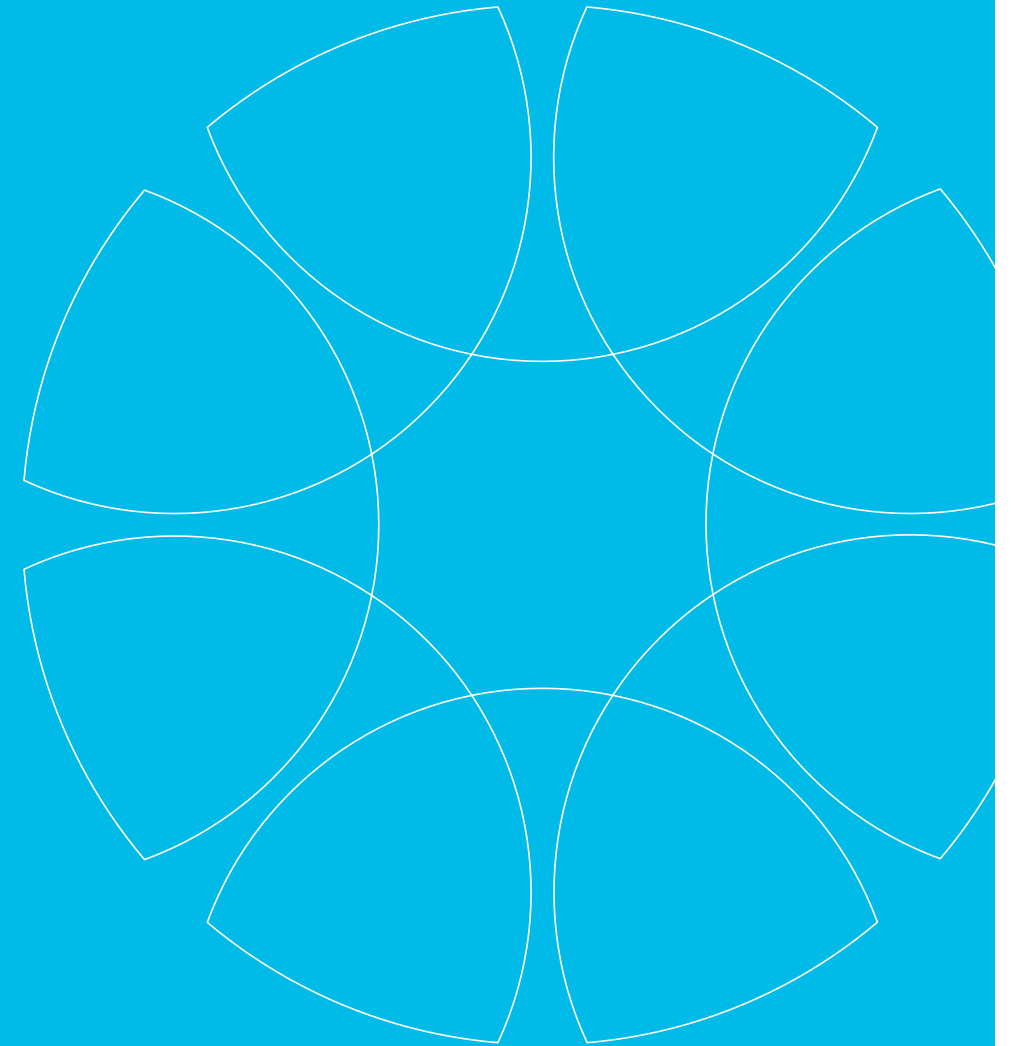


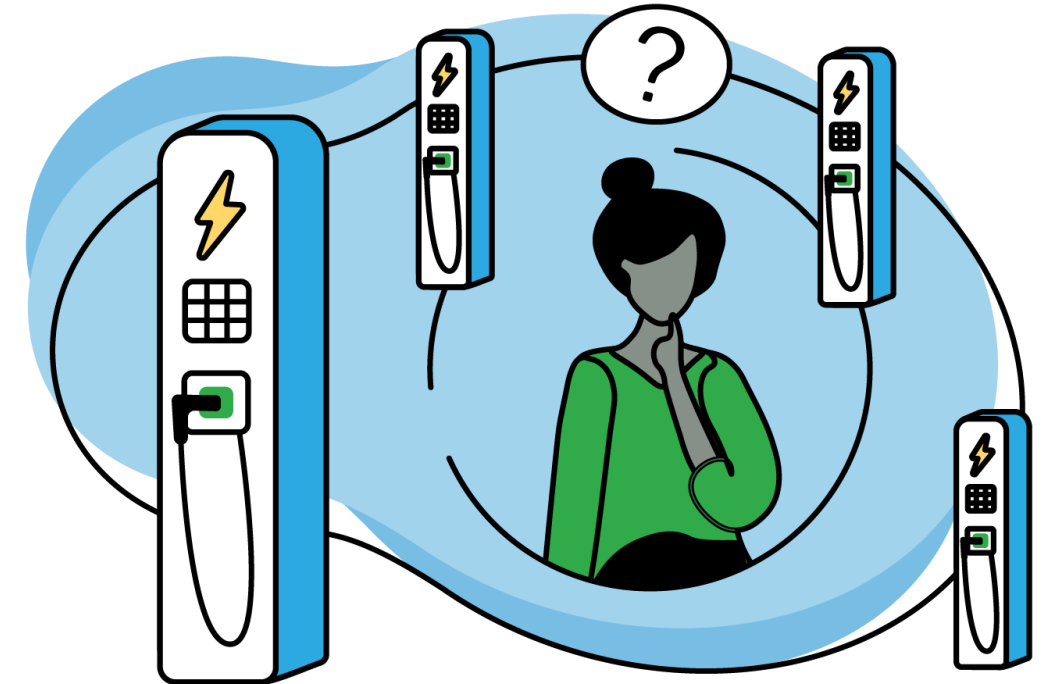
Electrifying Washington: The State's New EV Charging Program Explained

Multi-Family Housing Sites
September 19, 2023



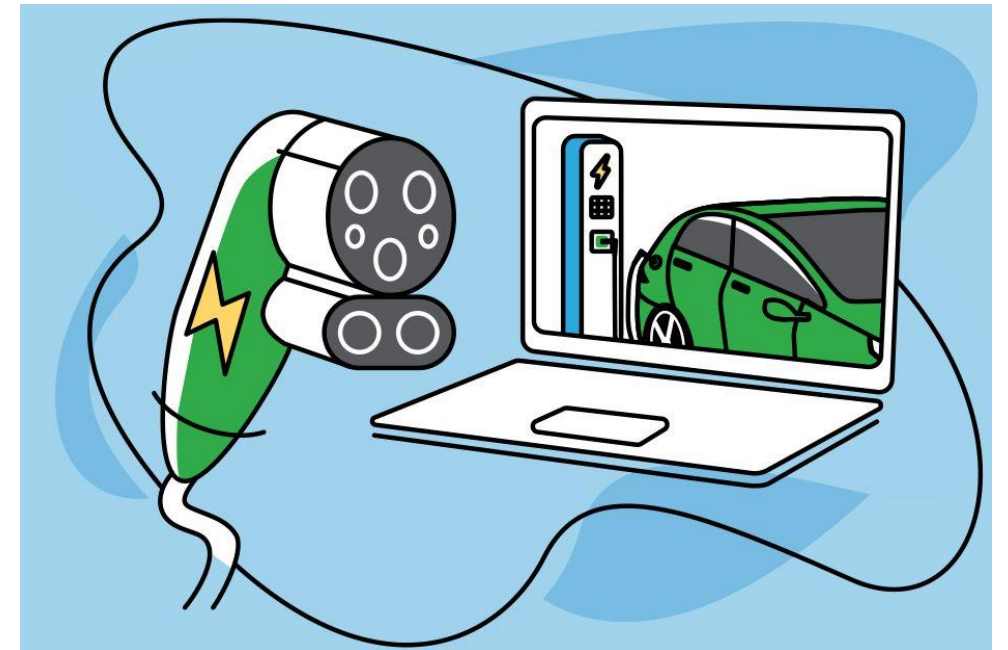
Welcome & Agenda

- Welcome
- Program Overview
- Multi-Family Housing Specifics
- Application Process
 - Application Scoring
 - Site Score Report via Mapping Tool
 - Application Document Overview
- Question & Answer Session

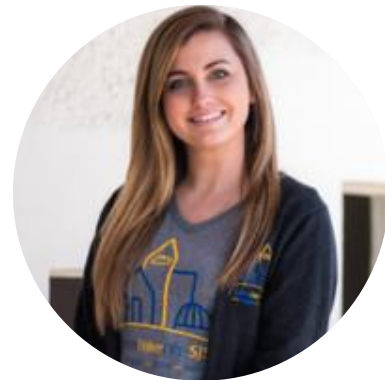


Webinar Reminders

- This webinar will be recorded, and recording & slides will be made available.
- Q&A will be held at the end of the webinar – please use chat feature to ask questions.
- Please make sure you are on mute.
 - If experiencing difficulty hearing, it may help to call in via the phone number listed on your webinar invitation.



Panelists



Alex Dahl

Technical Education & Advisory, EVI



Dervla DiPrima

Project Manager, WAEVCP



Jonathan Changus

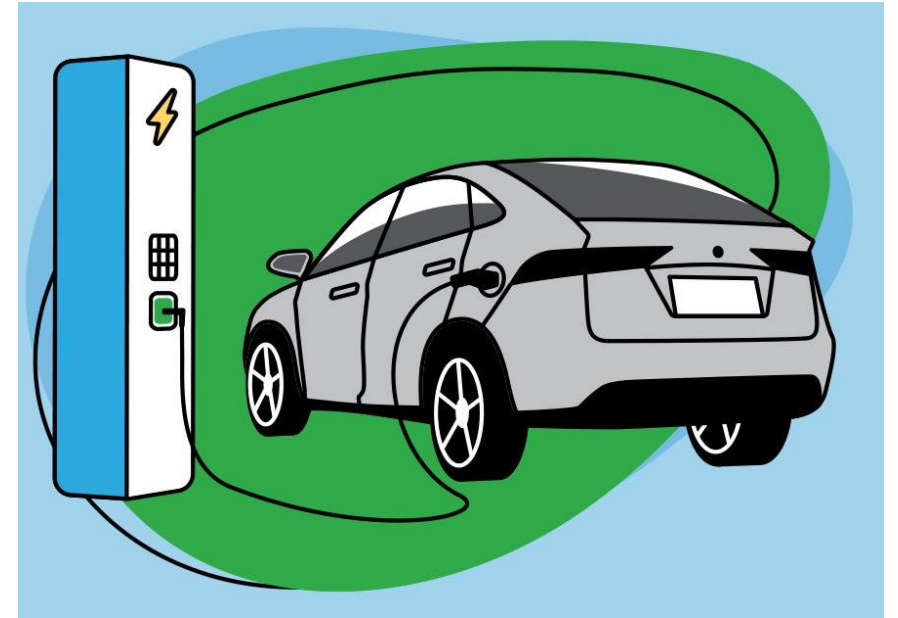
Director of Transportation Programs,
Western States



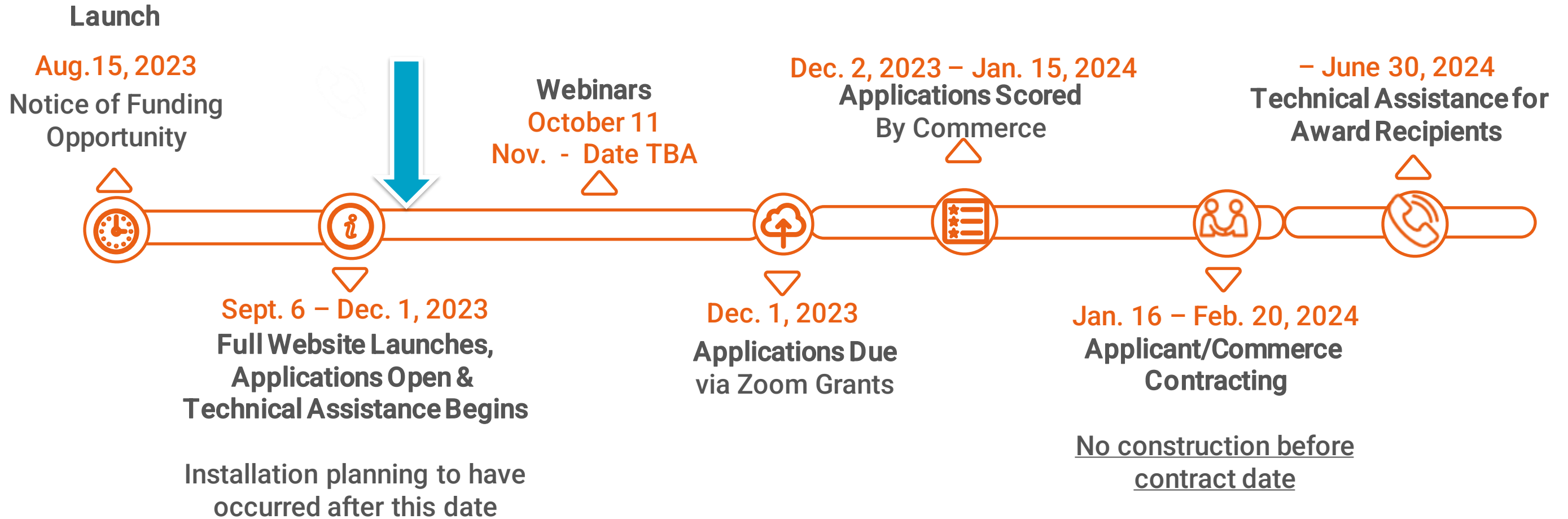
Program Overview

Program Purpose & Policy Context

- The purpose of the Washington Electric Vehicle Charging Program (WAEVCP) is to:
 - Reduce greenhouse gas emissions
 - Improve air quality
 - Promote equity in access to electric vehicle charging infrastructure
- Helps prepare Washington for the next generation of vehicles with necessary infrastructure
- Complements other state initiatives, EV infrastructure programs, and contributes to emissions reductions objectives



Timeline



Lead Applicants

Public Agencies

Cities, towns, counties, public school districts or special schools, transportation planning organizations, transportation authorities or agencies, municipal corporations, port districts or authorities, political subdivision of any type, or any other entities or authorities of local government in corporate form or otherwise.

Tribal Entities

Federally recognized tribes, including enterprises located off tribal land and owned by a federally-recognized tribe.

Retail Electric Utilities

Any electrical company, public utility district, irrigation district, port district, electric cooperative, or municipal electric utility that is engaged in the business of distributing electricity to retail electric customers in the state, per [RCW 80.60.010](#).

Community-Based Non-Profits

501(c)(3) organizations or labor unions representing geographic, racial, ethnic, cultural, or worker communities within Washington State.

Lead Applicants may partner with other organizations. Utility must be listed as a partner on the application. Other partners may be listed as partners to help with your installation. Please reach out for Technical Assistance if you need help connecting with a Lead Applicant to complete an application for your site.

Site Types



Multi-Family Housing

- \$28,800,000 in available funding
- Level 2 Chargers only



Public Charging

- \$25,600,000 in available funding
- Level 2 or DC Fast Chargers



Fleet Depots & Workplaces

- \$9,600,000 in available funding
- Level 2 Chargers only

Sites will be evaluated & scored individually, not as an application. Therefore, some, but not all, of your applied-for sites may be awarded funding.

Technical Assistance (TA)

Between Sept. 6 and Dec. 1, CSE and partner organizations will support applicants with understanding program requirements, preparing an application, and technical information on charging equipment.

Specialized resources are also available to help with scoring, mapping tools, and other elements of this program via the Document Library on the program website.

Partner organizations: See Technical Assistance Page on website OR application document to identify a program partner who may be able to assist with targeted questions.



Phone: (509) 715-3076



Email: waevcp@energycenter.org



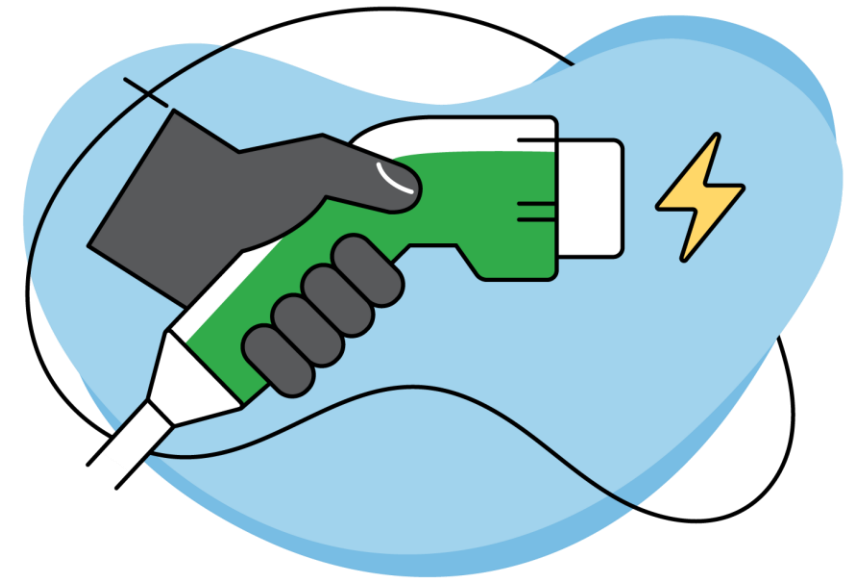
Website: www.waevcharging.org

Additional TA services will be available January 16 – June 30, 2024 for sites receiving awards.

Multi-Family Housing Sites

Multi-Family Housing Overview

- \$28,800,000 total funding available for MFH
 - 45% of total program funding
- MFH is only eligible for Level 2 (L2) installations.
- MFH installations are eligible for up to **100% of project costs covered.**
- MFH projects are required to share information about EV adoption and charger use to the new users on site, such as operation instructions & basic information on L2 chargers.



Useful Definitions

- **Multi-Family Housing Site:**
 - A residential development with five or more units.
 - Hotels and motels do not qualify as multifamily housing.
- **Level 2 Charger (L2):**
 - A charger that supplies electricity to a plug-in electric vehicle's onboard charger in the form of alternating current (AC).
 - L2 charging produces a full charge for a 300-mile range battery in about 6-8 hours.
- **Connector:**
 - The plug delivering power between the charger and the on-board vehicle charging equipment.
- **Port:**
 - An access point for electric vehicle charging. Typically identified as the number of charging connectors that an EVSE can simultaneously provide power to.

Award Amounts & Structure

Connector	Base Award (per port)	Equity Adder (per port)	Future Proofing Adder
Level 2 (≥6.7 kW)	\$7,500	\$2,500	\$1,000 per parking spot stub-out, up to \$3,000 per site

Sites that score a 9 or 10 on the EHD layer of the Mapping Tool, or are tribal locations, are eligible for the Equity Adder.

Connector	Minimum # of Ports	Maximum # of Ports	Eligible Connector Types
Level 2	2	20	J1772 or NACS

All sites must have at least 33% of L2 connectors be J1772.

Maximum award per site:

\$200,000 for 20 Level 2 ports + \$3,000 Future Proofing Adder per site = \$203,000

Eligible & Ineligible Costs

Eligible Costs

- Designing/Planning/Engineering
- Installation (e.g., labor, materials, project-related signage, etc.)
- Electrical equipment (e.g., EVSE, panels, transformers, etc.)
- Energy storage equipment
- All-inclusive solar EV charging systems
- Load/demand management equipment
- Ongoing services (e.g., maintenance, networking, warranties, etc.)
- Safety and security equipment

Ineligible Costs

- Costs for EV charging ports that are required by state building code for new developments
- Costs covered by other incentives/grants
- Costs incurred prior to the contract award date with the Department of Commerce
- Costs not specified in the Eligible Costs List unless otherwise approved by the Department of Commerce

Stacking with other programs is allowed.

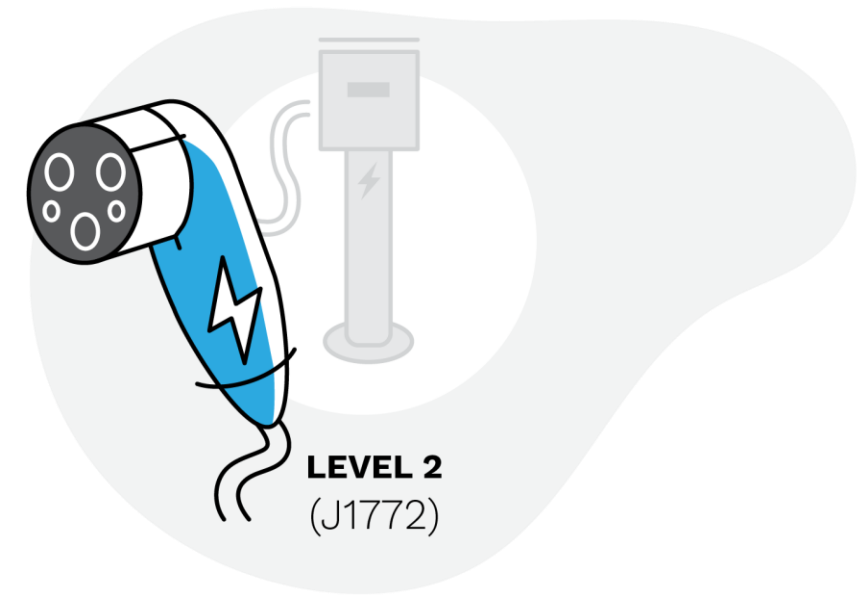
Equipment Requirements

Minimum L2 requirements:

- Use J1772 connector standard or the NACS connector
- Networked via Wi-fi, cellular (4G+), and/or Ethernet
- Capable of at least a 7.2-kW power output
- Have both a Euro MasterCard Visa (EMV) chip reader and a mobile payment device
- Support remote start capabilities for, at minimum, payment via a toll-free number
- Does not require a membership for payment.
- Certification for OCPP 1.6 or later
- ENERGY STAR certification
 - Rule goes into effect on January 1, 2024

Network requirements:

- Must, at minimum, use Open Charge Point Interface (OCPI) version 2.1.1 or 2.2 standards.
- OCPP Certified to version 1.6 or later.
- Must be capable of facilitating payment

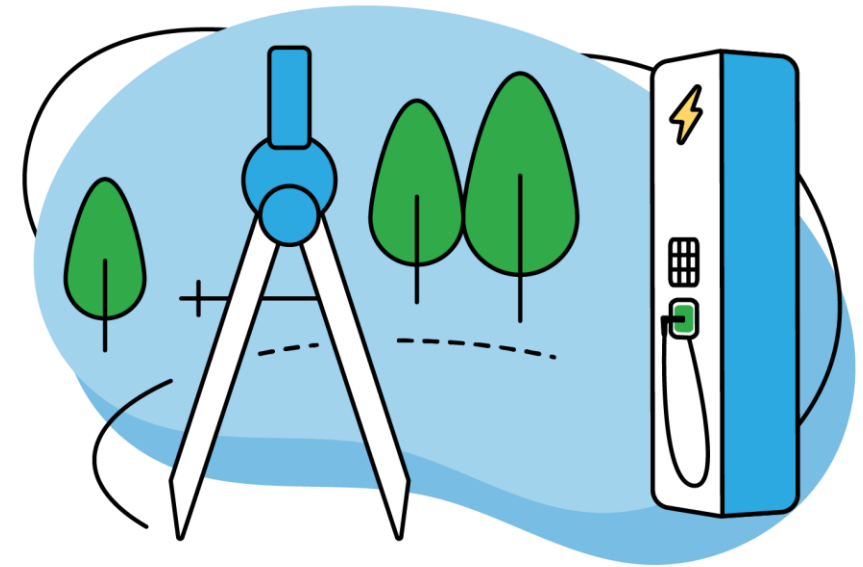


Required Completion Timelines

Funded L2 installations must be completed within **270 days**.
Clock starts at time of contract execution.

Example:

A MFH project was notified of funding award on January 16, 2024. Their contract with the Department of Commerce was executed on **February 19, 2024**. This installation will need to be completed by **November 15, 2024** (+270 days from 2/19/24).



L2 equipment must be operational & charging session data must be shared with Commerce for a minimum of 4 years.



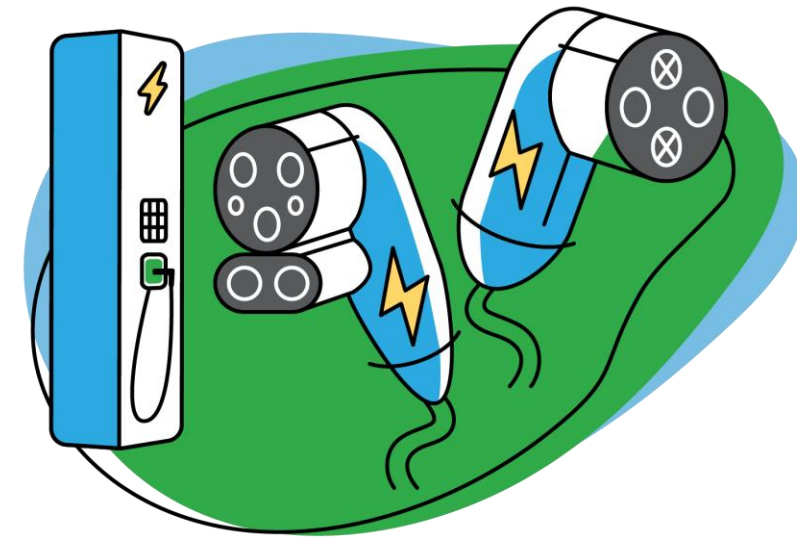
Installation Requirements

Eligible site types:

- New EV charging infrastructure at an eligible site.
- Existing EV charging infrastructure at an eligible site, on which a charger has not previously been installed (e.g., a stub-out or make-ready).
- New developments can be eligible sites, as long as the installation provides at least 2 additional ports above what is required.
 - WAEVCP funding is not to be used for chargers and other elements required as part of state building code requirements for new developments. Funding will be granted for installations beyond the minimum requirement.

Labor requirements:

- Each site must have at least 15% apprenticeship utilization. If an application contains multiple sites that are funded, the requirement must be met/ exceeded at each site within an application.
- All labor performed must adhere to prevailing wage requirements and provide satisfactory documentation.



Application Process

Application Process

1.

Create account on ZOOM Grants

Application document will be available through [ZOOM Grants website](#). Lead applicants create account & download Excel application document.

2.

Use mapping tool to assess sites

Use brand new mapping tool to identify eligible sites & their accompanying scores.

3.

Complete application document

Include details about project scope and use the Site Score Report from the mapping tool to complete document fields.

4.

Upload completed application document to ZOOM Grants and submit application by December 1, 2023.

5.

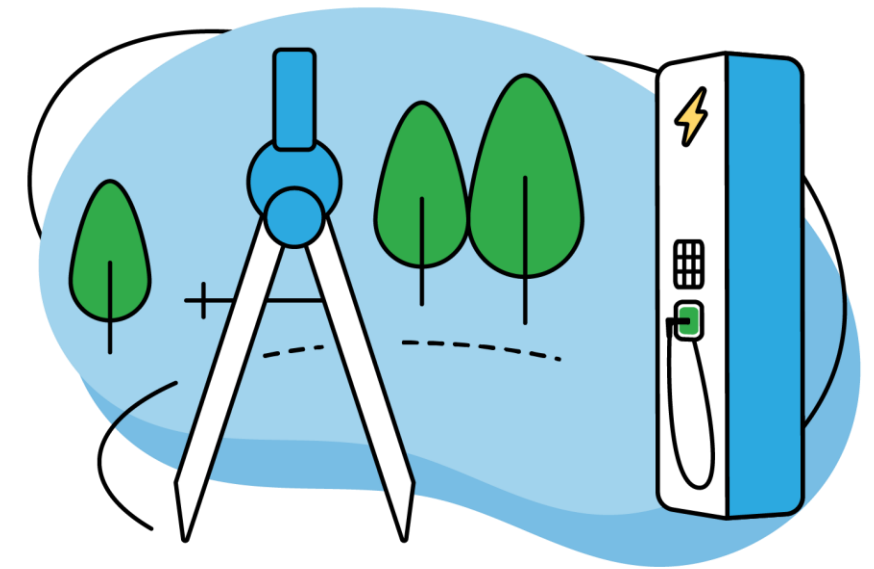
Commerce reviews scores on each site and awards funding.

6.

All applicants will receive results by January 16, 2024.

Scoring Criteria Overview

- Unique scoring criteria for each site type – mix of mapping tool and data entry of project scope to determine scores and estimated award
- Mapping tool automates complex scoring elements
- Helps balance awards between rural and urban sites and increase EV infrastructure across the entire state
- Application document includes drop-down menus and data validation to improve data entry
- All scores will be reviewed by the Department of Commerce prior to award



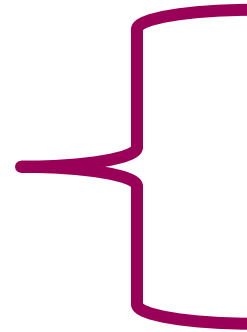
Scoring Example - MFH Site

Use Site Score Report from mapping tool to complete

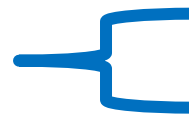


Factor	Metric	Estimated Score	Possible Points	Percentage
Housing affordability	WTN Unaffordability of Housing Score x 3	<u>10</u> (x3) = 30	30	30%
Low-income	WTN Median Household Income x 2	<u>10</u> (x2) = 20	20	20%
Overburdened community	9-10, tribal lands and properties – 30 7-8 – 25 1-6 – Multiply by 3	<u>10</u> (x3) = 30	30	30%
Labor	Commitment to electrician apprenticeship utilization rates: 25% - 10 20% - 5 15% - 0 (Required)	<u>15%</u> = 0 (via drop down menu)	10	10%
	Commitment to use Project Labor Agreement with construction workers (Y or N)	<u>Yes</u> = 5 (via drop down menu)	5	5%
	Commitment to use OMWBE contractor (Y or N)	<u>Yes</u> = 5 (via drop down menu)	5	5%
Total		90	100	100%

Use your project scope/other documents to complete



Auto-calculated on Application Document



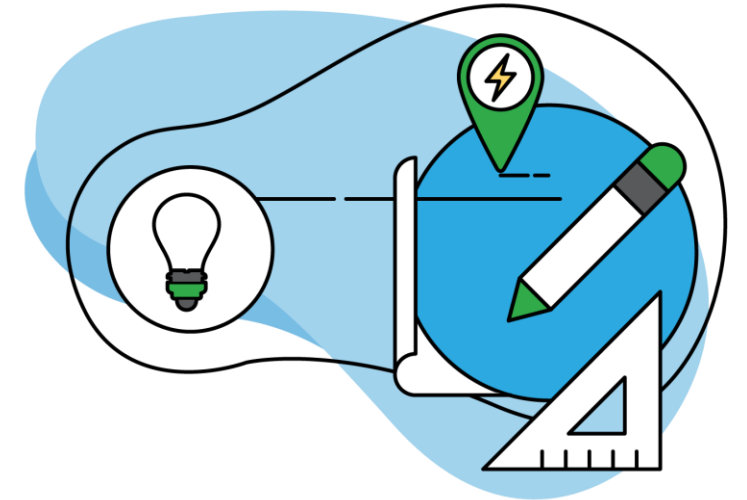
Mapping Tool Overview

- Developed by the Department of Commerce and Timmons Group, the goal of the mapping tool and associated scoring criteria is to channel infrastructure development into preferred locations to maximize program benefits.
- Two mapping tools:
 - **Residential Mapping Tool for Multi-Family Housing Sites**
 - Public Mapping Tool for Public Charging, Fleets, and Workplaces
- Provides quantitative data about a site's potential future use, community context, and other measures.

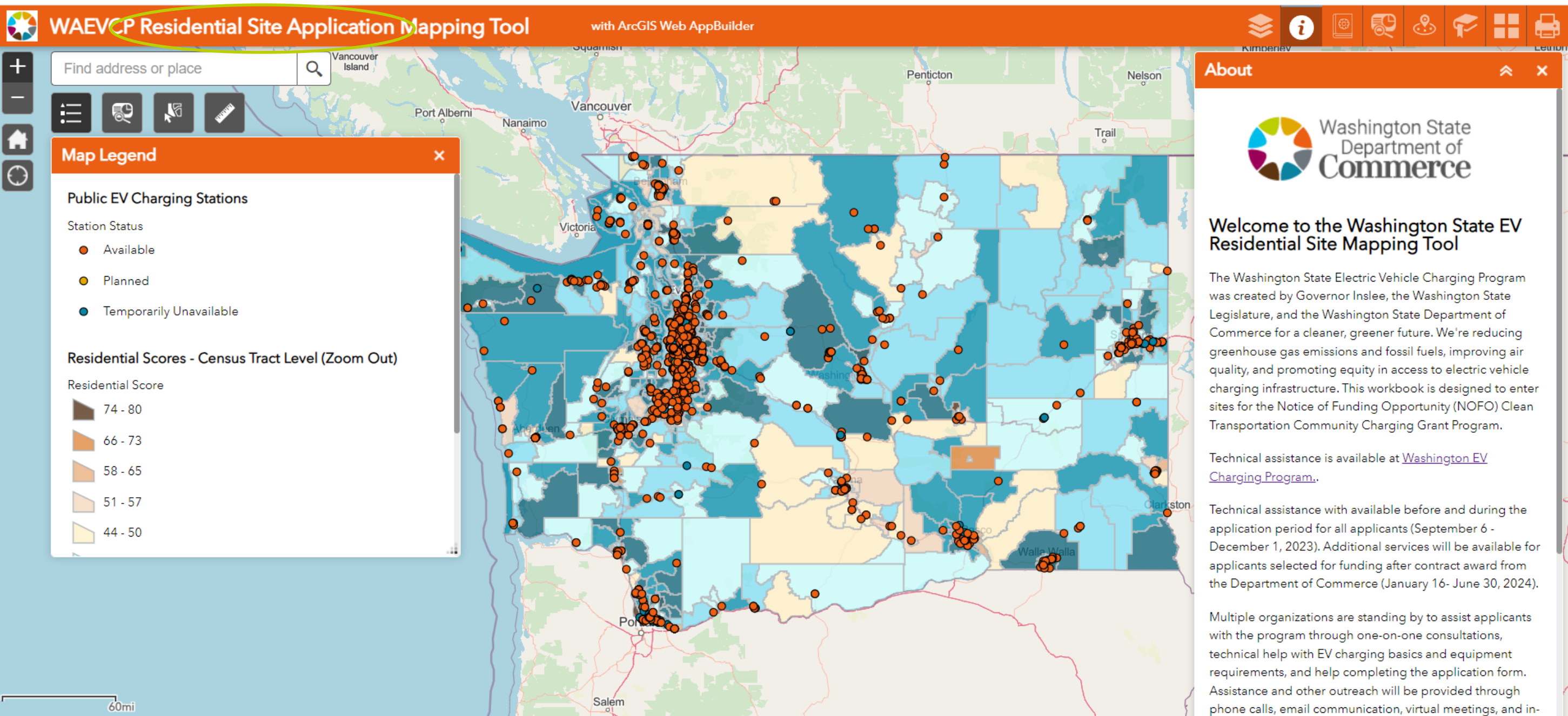


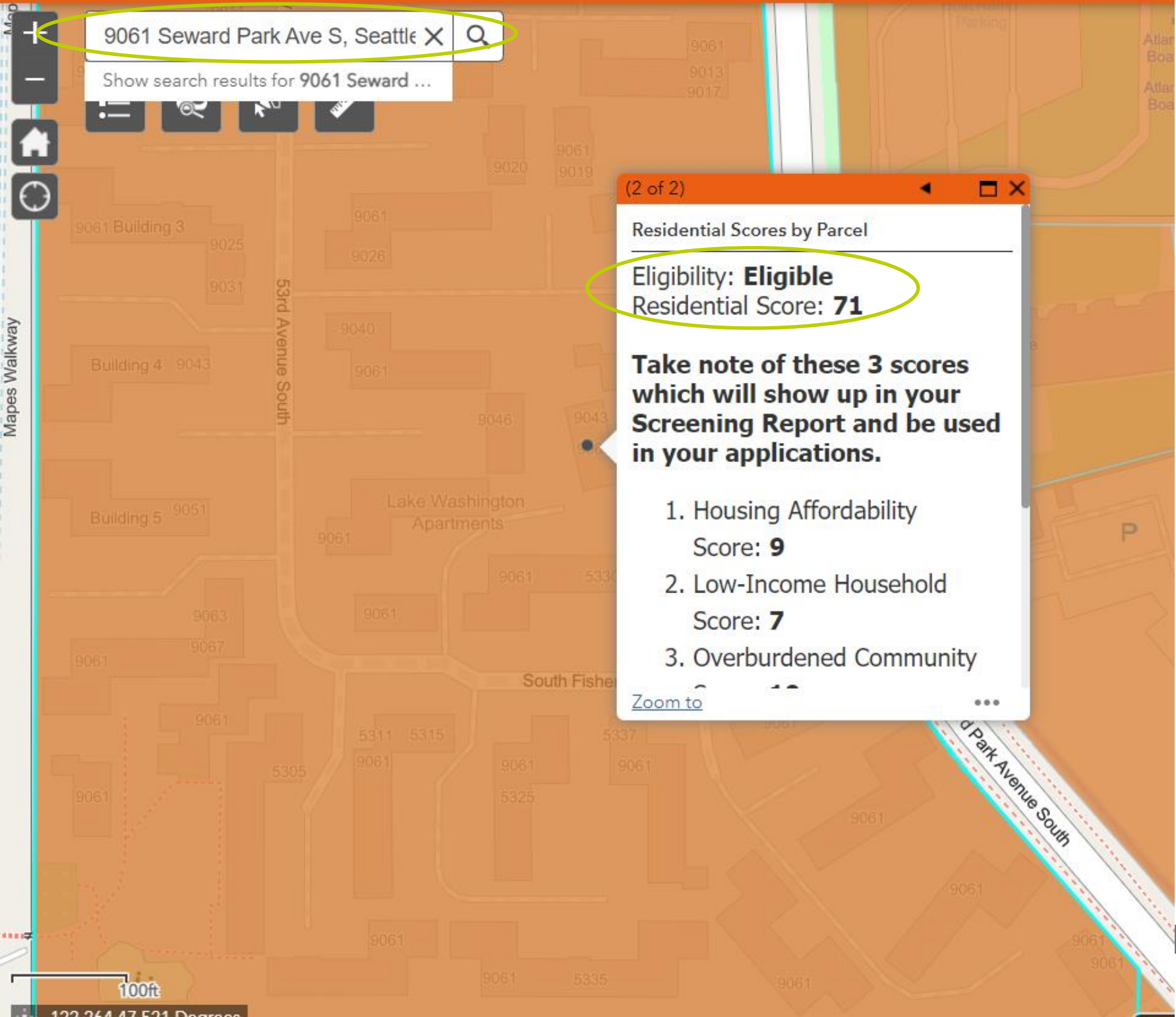
Mapping Tool Process

- Applicants/partners will need to enter an address or select a site location on the appropriate map
- Technical assistance and user guides are available to assist with each mapping tool
- A printable Site Score Report will be created displaying scores for each selected parcel
- Scores should be input in the corresponding locations on the Application Document
- Scores will be verified by Department of Commerce staff



Mapping Tool Overview





Using Mapping Tool

- Enter your proposed installation site address
- Review eligibility & score in popup
- Use layer feature to help identify score range
 - Brown shown here

Site Score Report

- Generate printable Site Score Report
- Copy scores into Application Document

Summary

Name	Count	Area(ft ²)	Length(ft)
Residential Scores - Parcel Level (Zoom In)	1	N/A	N/A
Public EV Charging Stations	0	N/A	N/A

Residential Scores - Parcel Level (Zoom In)

#	Eligibility	Parcel ID	Census Tract	County	Housing Affordability Score
1	Eligible	3524049015	53033011800	King	9

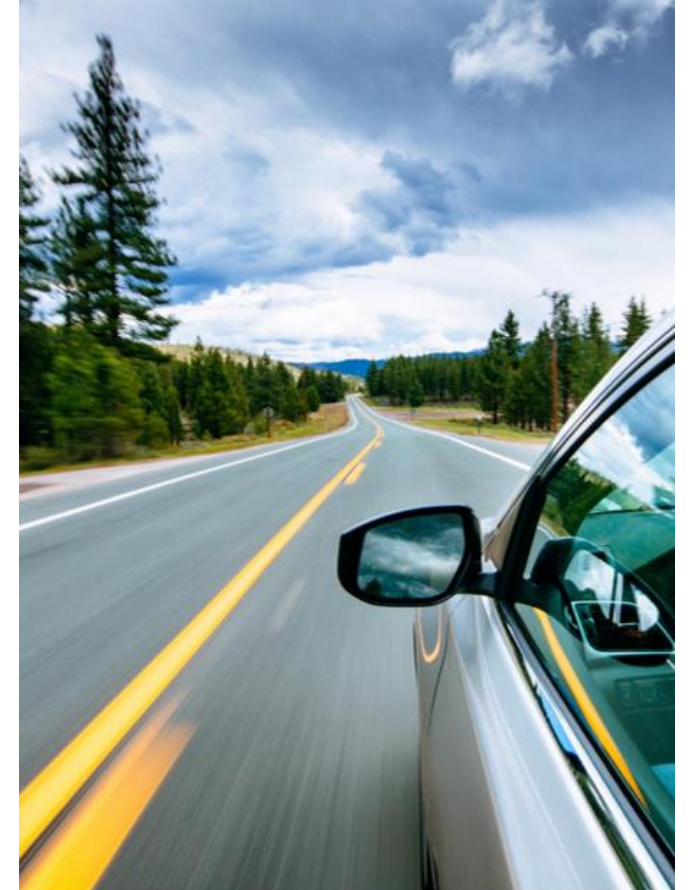
#	Low-Income Household Score	Overburdened Community Score	Address	City	Zip
1	7	10	9061 SEWARD PARK AVE S	SEATTLE	98118

#	Land Use Code	Assessor's Link	Area(ft ²)
1	13	https://blue.kingcounty.com/Assessor/eRealProperty/Dashboard.aspx?ParcelNbr=3524049015	N/A

Use the values from this report in your site application!

Application Document Outline

1. Face Sheet/ Instructions
2. Technical Assistance Resources Page
3. Site Types Overview
4. Eligibility Guide – Site Type Definitions and Funding Amounts
5. Site Type Pages
 1. Use tab for Multi-family Housing
 2. Add all application details here



Question & Answer Session

Ask questions using the chat function.

Useful Links

WAEVCP Program Website:

- <https://waevcharging.org/>

Application Document:

- https://www.zoomgrants.com/zgf/Washington_State_Dept._of_Commerce/EV_Charging_Infrastructure_Grants.

MFH mapping tool:

- <https://bit.ly/EV-Residential-Grant-App>



Thank You!



Phone: (509) 715-3076



Email: waevcp@energycenter.org



Website: www.waevcharging.org

As a reminder, please contact us or visit waevcharging.org/technical-assistance for additional help with your application.

