

# WMFHA 2026 PROPERTY MANAGEMENT BUDGET GUIDE

Your one-stop-shop  
for budgeting WMFHA  
activities in 2026



WASHINGTON  
**MULTI  
FAMILY  
HOUSING**  
ASSOCIATION

# YEAR AT A GLANCE



## February

Day on  
the Hill  
CAM

## March

EdCon  
CAMT

## April

Giving Gala  
(Benefitting Akin)  
CALP  
CPO

## May

Business  
Exchange, Virtual  
Legal Symposium

## June

NAA  
Apartmentalize  
(New Orleans)

## July

WMFHA  
Invitational

## August

WMFHA's Impact  
Day with Rebuilding  
Together

## September

Washington  
Apartment  
Outlook

## October

Chili Cook-off  
(Benefitting  
DAWN)

## November

Emerald  
Awards

## December

President's  
Brunch

Smart Planning.  
Year-Round Impact.



# NEW MEMBERSHIP DUES



## 2026 DUES

MEMBER TYPE	DUES AMOUNT	INCREASE %
Management Company	\$455.00	0%
Property Base	\$325.00	0%
Property Per Unit	\$3.25	0%
Supplier	\$800.00	0%
Non-Profit	\$295.00	0%
Owner/ Ownership Group	\$455.00	0%

More value!  
Same dues!

### To Our Valued Property Management Partners,

"We're grateful that you've chosen WMFHA to be part of your business journey. Your support and trust are what make this community so strong.

Even as we face rising costs—from operating expenses to the dues we pay to the National Apartment Association on your behalf—we know you are managing the same challenges. That's why we've made the decision to keep membership dues unchanged for 2026.

At WMFHA, we truly believe we're better together. Thank you for being such an important part of this community. We're proud to stand beside you and will continue working to be the partner and resource you can always count on."

With Gratitude,

**Angie Bentler – 2025 WMFHA Board President**  
**Director of Asset Management – Pacific Crest Real Estate**





# ADVOCATE



## Real Members Real Testimonials

“WMFHA advocacy on regulatory issues important to the industry and regular updates on legislative changes are unmatched!”

**Wendy Sylvester**  
Holland Partner Group



# WMFHA PAC



## WMFHA PAC Works for You!

WMFHA's Political Action Committee (PAC) supports candidates who share our views on industry issues.

**When you contribute** you empower our team to inspire crucial change on your behalf.

**Any amount donated changes our industry for the better.**



## PAC



Our PAC is nonpartisan, which means we don't support democrats or republicans, **we support champions of the industry**. PAC dollars help us build relationships with current elected officials and candidates to ensure we have a seat at the table when critical decisions impacting multifamily housing are being made.

## Better Government Fund

### Can't Donate to the PAC?

WMFHA has an alternative account, the Better Government Fund (BGF). Dollars from the BGF help protect our industry **through direct legal action**. **Contributions help us fight for your interests.**

**MORE INFO  
ON BGF**



**DONATE TO  
PAC HERE**



## DAY ON THE HILL

**TICKETS  
\$75 PER PERSON**  
*Subject to change*



# EDUCATE



## **Real Members Real Testimonials**

"I appreciate the webinars and presentations of information. Everyone has great attitudes despite how frustrating and/or confusing so many of the legalities in our industry can be. WMFHA's presenters and almost all of their guest presenters are exceptional speakers with well-executed presentations and a special talent for answering so many questions."

**Jacki Campbell**  
**Villa Appia**

# EDUCATE



## CREDENTIAL PROGRAMS



**Certified Apartment Manager**

\$1600

AUDIENCE: Property and Assistant Managers



**Certificate of Apartment Maintenance Technician**

\$1600

AUDIENCE: Maintenance Professionals



**Certified Apartment Portfolio Manager**

\$1700

AUDIENCE: Property Supervisors and Managers



**Certified Apartment Leasing Professional**

\$475

AUDIENCE: Asst. Managers & Leasing Consultants



**Certified Pool Operator Course**

\$425

AUDIENCE: Maintenance Professionals

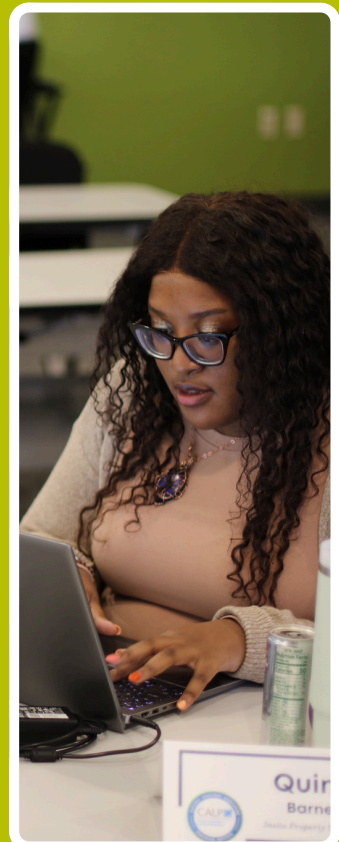


**MONTHLY WEBINARS - \$49**



**VIRTUAL LEGAL SYMPOSIUM - \$139**

**PAYMENT PLANS  
AVAILABLE  
for all credential programs!**





# EDUCATE



## Emerging Leaders

Includes tickets to EdCon, WAO,  
and Day on the Hill

**\$249**

## Training Room Rental

**\$300 FULL DAY  
\$200 HALF DAY**

## In-Person Work Shops

Topics include: Mental Health  
First Aid, Pool School, Affordable  
Housing, Leadership, Leasing &  
Marketing

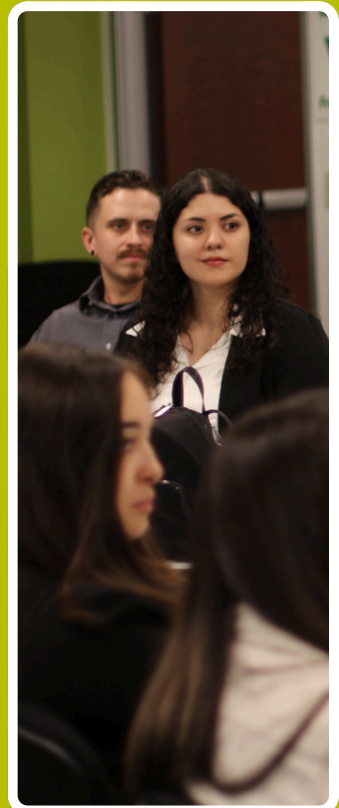
**STARTING  
AT \$99**



# Custom Training

**\$1750  
HALF DAY**

**\$2500  
FULL DAY**



# EVENTS



## Real Members Real Testimonials

“One of the things I value most about the organization is the people, both those who work behind the scenes and those who lead it. Their professionalism, passion, and genuine commitment to the mission really stand out. It creates a welcoming and collaborative environment that makes participation both meaningful and enjoyable. That strong sense of community and support is big reason I would recommend the organization to others.”

**Jackie Gutierrez**  
**Waterscape Juanita**



# EVENTS



→ <b>EDCON</b>	\$115 - CYBER SALE \$130 - EARLY BIRD UNTIL 12/31/25 \$160 - REGULAR
→ <b>BUSINESS EXCHANGE</b>	FREE
→ <b>WA APT OUTLOOK</b>	\$119
→ <b>EMERALD AWARDS NOMINATIONS</b>	\$155 - PER NOMINATION \$149 - GALA TICKET
→ <b>CHILI COOK-OFF</b>	\$20 - Ticket \$500 - Competitor Table
→ <b>GIVING GALA</b>	\$149



## IMPORTANT DATES!!!

- **EdCon** - March 12
- **Giving Gala** - April 30
- **Business Exchange** - May
- **Rebuilding Together** - July
- **Washington Apartment Outlook** - Sept
- **Chili Cook-Off** - October 24
- **Emerald Awards** - Nov 13



# WHO'S WHO



**NIKC MARIN**  
Executive Director  
nick@wmfha.org



**SLOANE CERBANA**  
VP of Operations  
sloane@wmfha.org



**TRICIA JOHNSON**  
Senior Director of  
Events & Marketing  
tricia@wmfha.org



**KATRINA BISHOP**  
Director of Office Services  
katrina@wmfha.org



**JASON LOUGHRIDGE**  
Director of Career  
Development  
jason@wmfha.org



**EVAN OMELIA**  
Marketing &  
Communications Manager  
evan@wmfha.org



**WILLIAM SCHNEIDER**  
Public Affairs Manager  
william@wmfha.org



**HANNAH ASHCRAFT**  
Events & Education Specialist  
hannah@wmfha.org



**MOLLY WATTS**  
Member Services Specialist  
molly@wmfha.org

## Don't Hesitate to Reach Out



WASHINGTON  
**MULTI  
FAMILY  
HOUSING**  
ASSOCIATION