

WMFHA 2026 PROPERTY MANAGEMENT BUDGET GUIDE

Your one-stop-shop for budgeting
WMFHA activities in 2026

EAST



WASHINGTON
**MULTI
FAMILY
HOUSING**
ASSOCIATION

YEAR AT A GLANCE



January

Emerging Leader
Kick-Off

Fair Housing
Series Webinar

February

Day on the Hill 2/19

Virtual CAM

Monthly Webinar

March

Coffee Connection
Spokane/Tri Cities

Supplier Success
Hybrid CAMT

Supplier Success Class -TBD

April

EDCON EAST 4/9
Monthly Webinar

Virtual CPO

Fair Housing Series Webinar

May

Coffee Connection
Spokane/Tri Cities

Virtual Legal Symposium

Virtual CPO

Monthly Webinar

June

Corks, Forks, &
Brews 6/25

Monthly Webinar

July

Business
Exchange (TBD)

Fair Housing
Series Webinar

August

Coffee Connection
Spokane/Tri Cities

Monthly Webinar

September

Maintenance
Appreciation Spokane

Monthly Webinar

October

Coffee Connection
Tri Cities

Monthly Webinar

Leasing Workshop - TBD

November

Coffee Connection
Spokane

Monthly Webinar

December

Holiday Giving Gala
12/9 Spokane

EA WA Leadership
Summit & Celebration

Smart Planning.
Year-Round Impact.



NEW MEMBERSHIP DUES



2026 DUES

MEMBER TYPE	DUES AMOUNT	INCREASE %
Management Company	\$305.00	0%
Property Base	\$205.00	0%
Property Per Unit	\$2.25	0%
Supplier	\$425.00	0%
Non-Profit	\$295.00	0%
Owner/ Ownership Group	\$305.00	0%

More value!
Same dues!

To Our Valued Property Management Partners,

"We're grateful that you've chosen WMFHA to be part of your business journey. Your support and trust are what make this community so strong.

Even as we face rising costs—from operating expenses to the dues we pay to the National Apartment Association on your behalf—we know you are managing the same challenges. That's why we've made the decision to keep membership dues unchanged for 2026.

At WMFHA, we truly believe we're better together. Thank you for being such an important part of this community. We're proud to stand beside you and will continue working to be the partner and resource you can always count on."

With Gratitude,

Angie Bentler – 2025 WMFHA Board President
Director of Asset Management – Pacific Crest Real Estate



ADVOCATE



Real Members Real Testimonials

“The association has been an incredible partner. Education and advocacy have been the most helpful, but I love all of the networking opportunities and celebrations as well. There is such a great mixture with the entire association.”

Amanda Gunn
Rockwood Property
Management

WMFHA PAC



WMFHA PAC Works for You!

WMFHA's Political Action Committee (PAC) supports candidates who share our views on industry issues.

When you contribute you empower our team to inspire crucial change on your behalf.

Any amount donated changes our industry for the better.



PAC



Our PAC is nonpartisan, which means we don't support democrats or republicans, **we support champions of the industry**. PAC dollars help us build relationships with current elected officials and candidates to ensure we have a seat at the table when critical decisions impacting multifamily housing are being made.

Better Government Fund

Can't Donate to the PAC?

WMFHA has an alternative account, the Better Government Fund (BGF). Dollars from the BGF help protect our industry **through direct legal action**. **Contributions help us fight for your interests.**

**MORE INFO
ON BGF**



**DONATE TO
PAC HERE**



DAY ON THE HILL

**TICKETS
\$75 PER PERSON**
Subject to change



EDUCATE



Real Members Real Testimonials

"Engagement and continuing education opportunity's are amazing."

Michael Bravo
Quail Springs

EDUCATE



CREDENTIAL PROGRAMS



Certified Apartment Manager

\$1600

AUDIENCE: Property and Assistant Managers



Certificate of Apartment Maintenance Technician

\$1600

AUDIENCE: Maintenance Professionals



Certified Apartment Portfolio Manager

\$1700

AUDIENCE: Property Supervisors and Managers



Certified Apartment Leasing Professional

\$475

AUDIENCE: Asst. Managers & Leasing Consultants



Certified Pool Operator Course

\$425

AUDIENCE: Maintenance Professionals

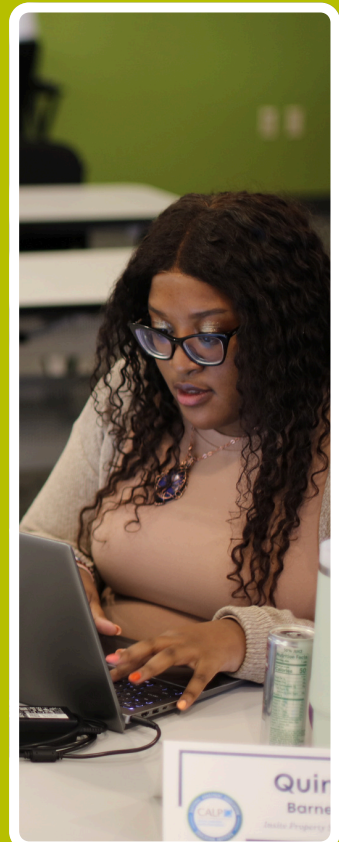


MONTHLY WEBINARS - \$49



VIRTUAL LEGAL SYMPOSIUM - \$139

**PAYMENT PLANS
AVAILABLE
for all credential programs!**



EDUCATE



Emerging Leaders

Includes tickets to EdCon, WAO,
and Day on the Hill

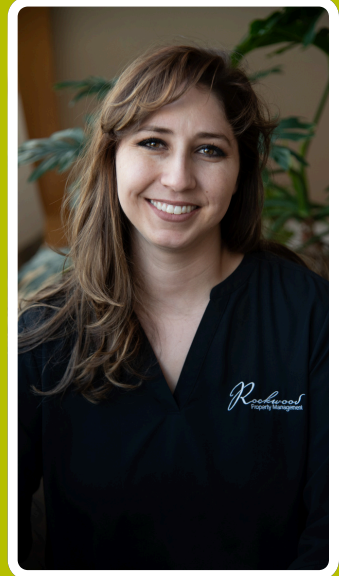
We encourage Eastern WA participation in
our Emerging Leaders Program. If you have
questions about travel and attendance
requirements, please reach out to Jason
Loughridge at jason@wmfha.org

\$249

In-Person Work Shops

Topics include: Mental Health
First Aid, Pool School, Affordable
Housing, Leadership, Leasing &
Marketing

**STARTING
AT \$99**



Custom Training

\$1750

HALF DAY

\$2500

FULL DAY





EVENTS



Real Members Real Testimonials

“What I appreciate most are the networking opportunities. Whether you're new to the industry or a seasoned professional, the connections you make here are meaningful and long-lasting. The events are always well-organized, engaging, and genuinely fun. They strike a perfect balance between education and enjoyment, making it easy to stay involved and informed.”

Angela Bare
Red Rock Property Management

EVENTS



→ BUSINESS EXCHANGE	FREE
→ CORKS, FORKS, & BREWS	\$40 - EARLY BIRD \$45 - REGULAR
→ EDCON EAST	\$79 - CYBER MONDAY \$89 - EARLY \$99 - REGULAR
→ MAINTENANCE APPRECIATION	\$55
→ COFFEE CONNECTION	FREE
→ HOLIDAY GIVING GALA	\$75 - (\$10 OF EACH TICKET GOES DIRECTLY TO VANESSA BEEHAN)



IMPORTANT DATES!!!

- **EdCon East** - April 9
- **Business Exchange** - July
- **Corks, Forks, & Brews** - June 25
- **Maintenance Appreciation** - Sept
- **Holiday Giving Gala** - December 9



WHO'S WHO



NIKC MARIN
Executive Director
nick@wmfha.org



SLOANE CERBANA
VP of Operations
sloane@wmfha.org



TRICIA JOHNSON
Senior Director of
Events & Marketing
tricia@wmfha.org



KATRINA BISHOP
Director of Office Services
katrina@wmfha.org



JASON LOUGHRIDGE
Director of Career
Development
jason@wmfha.org



EVAN OMELIA
Marketing &
Communications Manager
evan@wmfha.org



WILLIAM SCHNEIDER
Public Affairs Manager
william@wmfha.org



HANNAH ASHCRAFT
Events & Education Specialist
hannah@wmfha.org



MOLLY WATTS
Member Services Specialist
molly@wmfha.org

Don't Hesitate to Reach Out



WASHINGTON
**MULTI
FAMILY
HOUSING**
ASSOCIATION