

2022

strengthening connections

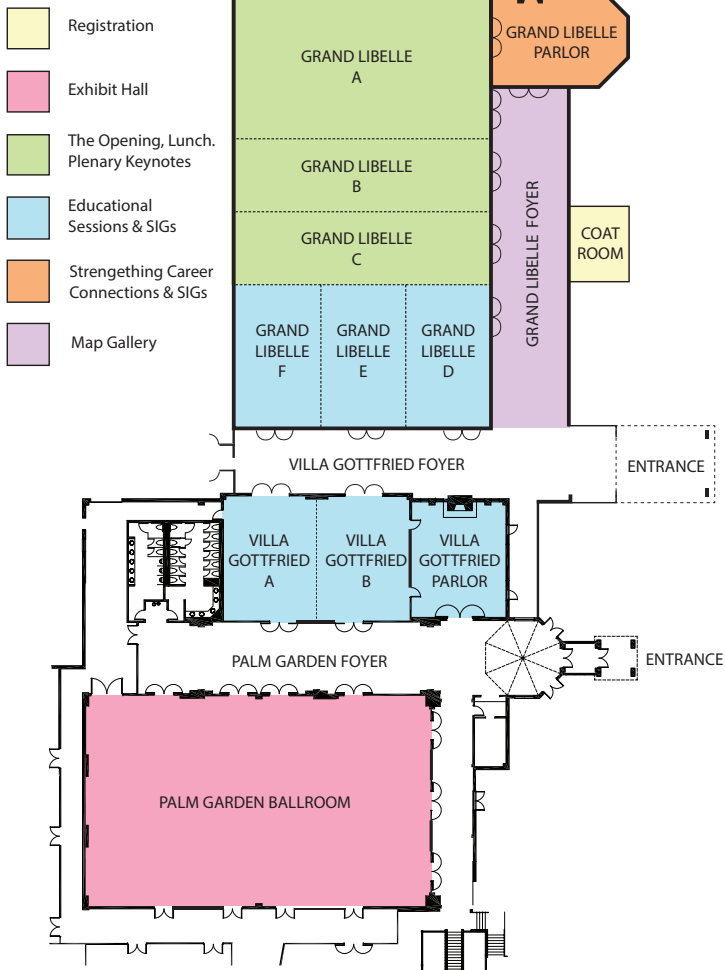
35TH WLIA ANNUAL CONFERENCE

CONFERENCE PROGRAM

THE OSTHOFF RESORT
ELKHART LAKE, WI
FEBRUARY 23-25



WISCONSIN
LAND INFORMATION
ASSOCIATION



WELCOME TO THE 35th ANNUAL WLIA CONFERENCE

..... February 23 - 25, 2022

Welcome to the frozen shores of Elkhart Lake, Wisconsin for the 2022 WLIA Annual Conference! We look forward to seeing all of you back in person this year to warm things up with an atmosphere of learning and networking with colleagues. After a very successful virtual conference last year, we will once again feature many excellent speakers, workshops, and networking opportunities that you have come to expect from WLIA.

Our theme this year is **Strengthening Connections**. Our vision at WLIA is to provide a forum where all members can participate, learn, and share ideas about land information systems across Wisconsin. There's no better forum than the Annual Conference. Please join us this year to re-connect and strengthen your connections with industry peers across our wonderful state.

The Annual Conference will feature three nationally recognized keynote speakers, 50 educational sessions, 12 technical workshops, 8 special interest groups, an exhibit hall, silent auction, social nights, awards and scholarship presentations, the annual map contest gallery, and more.

Your participation and support of WLIA is greatly appreciated. The Annual Conference is the heartbeat of our Association. It would not be possible without all of you, including our generous sponsors and exhibitors, presenters, and volunteer conference committee members. We look forward to seeing you and strengthening connections across our land information community.

Sincerely,

Zach Nienow
2022 WLIA Annual Conference Chair



2022 KEYNOTE SPEAKERS

The Osthoff Resort - Elkhart Lake, WI



Patricia Cummins

IN-PERSON
KEYNOTE

Ms. Cummins is the Director of Government Policy and Strategy Solutions at Esri. She started her career in state government, pioneering early GIS work in Minnesota and New Jersey. She joined Esri in 1998, where she has been supporting the government teams globally, focusing on understanding emerging government policies and how to apply innovative applications of GIS technology to support them. She has developed skills to bridge the gap between policy and technology, working with executives in state and federal government, the White House, and US congress to help them understand the value geospatial data and GIS technology bring to data driven decision making and realizing efficient, smart government.



Jason Stoker

VIRTUAL
KEYNOTE

Dr. Jason Stoker is a US Geological Survey Physical Scientist for the National Geospatial Program. Jason is currently the Elevation Science and Applications Lead for the National Geospatial Program. Jason oversees strategic planning, development and coordination of the 3D Elevation Program and related data, tools, and services. Jason provides technical expertise, prepares roadmaps and plans for elevation products and services, and helps determine the long-term vision for 3DEP products and services. Jason is the current President of ASPRS and is the FGDC National Geospatial Data Asset Data Manager for National Elevation Theme Datasets.



Lucas Joppa

VIRTUAL
KEYNOTE

Dr. Lucas Joppa is Microsoft's first Chief Environmental Officer, leading the development and execution of the company's sustainability strategy across its worldwide business. In this role, he drives Microsoft's core commitment to sustainability through ongoing technology innovation, program development, policy advancement, and global operational excellence. With a combined background in both environmental science and data science, Dr. Joppa is committed to using the power of technology to advance a growing movement to address the world's sustainability needs. Dr. Joppa leads Microsoft's ambitious plans to become a carbon negative, water positive, zero waste company and to build a new planetary computing platform that will transform the way we monitor, model, and manage Earth's natural systems.

2022 SCHEDULE OF EVENTS

The Osthoff Resort - Elkhart Lake, WI

WEDNESDAY, FEBRUARY 23, 2022

8:30 AM	Registration
9:30 AM - 12:30 PM	Morning Workshop Sessions
12:30 PM - 1:30 PM	Lunch & Board of Directors Lunch
1:30 PM - 4:30 PM	Afternoon Workshop Sessions
2:00 PM - 4:00 PM	WLIC Gathering
4:45 PM - 5:45 PM	LION Meeting
6:00 PM - 9:00 PM	"The Opening" feat. Road America's Mike Kertscher , and the "Carnival Night" Social Event

THURSDAY, FEBRUARY 24, 2022

7:00 AM - 8:00 AM	Diversity, Equity and Inclusion (DEI) SIG
8:00 AM - 8:30 AM	Registration & New Member Session
8:30 AM - 10:00 AM	Welcome and Keynote: Pat Cummins, Esri
10:00 AM - 4:00 PM	Strengthening Career Connections: A Drop-in Workshop
10:00 AM - 10:30 AM	Exhibit Hall Opening
10:30 AM - 12:00 PM	Morning Breakout Sessions
12:00 PM - 1:45 PM	Lunch, 50/50 Raffle, Town Hall Part 1, and Keynote: Jason Stoker, USGS
2:00 PM - 3:30 PM	Afternoon Breakout Sessions
3:30 PM - 4:00 PM	Map Gallery Opening
4:00 PM - 5:00 PM	Special Interest Group (SIG) Meetings
5:00 PM - 7:00 PM	Exhibitor Reception and Silent Auction

FRIDAY, FEBRUARY 25, 2022

7:00 AM - 8:00 AM	Past Presidents Breakfast
8:00 AM - 8:30 AM	Coffee with Exhibitors
8:30 AM - 9:30 AM	Welcome and Keynote: Lucas Joppa, Microsoft
9:30 AM - 10:00 AM	Break with Exhibitors; Silent Auction Ends
10:00 AM - 11:30 AM	Educational Breakout Sessions
11:30 AM - 12:00 PM	Break; Collect Silent Auction Items
12:00 PM - 1:30 PM	Lunch, Town Hall Part 2, Awards, & Prizes
1:30 PM - 3:00 PM	WLIA New Board Meeting

2022 CONFERENCE HIGHLIGHTS

February 23-25, 2022 - The Osthoff Resort - Elkhart Lake, WI

WISCONSIN LAND INFORMATION ASSOCIATION

WLIA is a grassroots organization representing a collection of concerned professionals working to develop, maintain, and apply a network of statewide land information systems. WLIA members include staff and elected officials from all levels of government, academics, consultants, and other private sector users of geographic information systems. Members are united by an interest in land records modernization, GIS and related technologies, and by the need for government policies and programs that support their efficient and effective application.

ABOUT THE CONFERENCE

The WLIA Conference is the premier GIS conference in Wisconsin, with emphasis on local, regional, and statewide trends, issues, and applications. This three-day conference is packed with hands-on workshops, technical demonstrations, educational presentations, and more. This is the ideal opportunity to meet other GIS professionals and interact, learn, and network.

FEATURING

- 50 Educational Sessions covering GIS use in the state
- 12 Technical Workshops with hands-on training
- Exhibit Hall, featuring the latest in GIS technology
- WLIA town hall forum, awards, and board meetings
- Land Information Officers Network (LION) meeting
- Special Interest Group (SIG) meetings
- Map Gallery and Map Contest
- Networking and fun-filled activities
- Job Board

2022 CONFERENCE HIGHLIGHTS

February 23-25, 2022 - The Osthoff Resort - Elkhart Lake, WI

EXHIBIT HALL

The Exhibit Hall is a great place to meet our sponsors and other exhibitors, with the latest in technology and services on display. The Exhibit Hall opens on Thursday, February 24 at 10:00AM. Make sure to attend the Exhibitor Reception, which takes place on Thursday night from 5:00PM - 7:00PM. The Exhibit Hall will re-open Friday, February 25 from 8:00AM - 10:00AM. All refreshment breaks during the conference will be offered in the Exhibit Hall.

SILENT AUCTION

A silent auction will begin on Thursday morning at 10:00AM in the Exhibit Hall and continue until 10:00AM on Friday. For those who want to bid early, or who cannot make it to the in-person event, online bidding will open at 10:00AM on Monday before the conference. (All bids, both online and in-person, will have to be conducted using the [Charity Auctions Online](#) site. We do not accept cash at the event.) Have fun bidding on items such as sports tickets, gift packs, hotel stays and much more! The auction raises money for the Damon Anderson Memorial Scholarship program via the WLIA Foundation, Inc., and all donations are tax deductible. Please help us to fund the education of those who follow in our footsteps. Remember, it's for the kids!

PLENARY WITH KEYNOTE SPEAKERS

WLIA is honored to have three Keynote Speakers present at the Annual Conference this year: **Patricia Cummins**, Director of Government Strategy and Policy Solutions at Esri; **Dr. Jason Stoker**, US Geological Survey Physical Scientist for the National Geospatial Program; and **Dr. Lucas Joppa**, Chief Environmental Officer at Microsoft and founder of #AlforEarth.

2022 CONFERENCE HIGHLIGHTS

February 23-25, 2022 - The Osthoff Resort - Elkhart Lake, WI

PRE-CONFERENCE WORKSHOPS

The 2022 workshops will be held on Wednesday, February 23 at The Osthoff Resort in Elkhart Lake, WI. There are 12 different workshops: six morning workshops from 9:30AM - 12:30PM, and six afternoon workshops from 1:30PM - 4:30PM. Member rate: \$75 per session; Non-member rate: \$90 per session. Lunch is automatically included at no extra charge if you register for two half-day paid workshops.

“THE OPENING”

The 2022 WLIA Annual Conference will commence on Wednesday evening, February 23, at 6:00PM with “The Opening.” The night will start off with a welcome from the President and General Manager of **Road America: Mike Kertscher**.

SOCIAL NIGHT

The “Carnival Night” social event will immediately follow “The Opening” along with food, beverages, and a cash bar. The fun carnival-like atmosphere will allow us to celebrate being back together, while still providing options and space. Various booths and tables will be setup with cards, indoor yard games, crafts, and more. Make sure to join us for a fun night of activities and networking opportunities.



2022 CONFERENCE HIGHLIGHTS

February 23-25, 2022 - The Osthoff Resort - Elkhart Lake, WI

AWARDS

Many of your colleagues and WLIA members commit countless hours going above and beyond expectations to further GIS and land records modernization in Wisconsin. On Thursday and Friday, WLIA will recognize many of these individuals and their achievements, as well as announce the winners of the Scholarship Awards, Map Contest, and Best Presentation Award.

SPECIAL INTEREST GROUPS

Do you have special interest related to GIS and Land Information? Special Interest Group (SIG) meetings will take place on Thursday afternoon from 4:00PM - 5:00PM. Check out some of the SIGs available through WLIA and start connecting: NextGen 911; LiDAR/Elevation/Hydro; UAS; Municipal GIS Users (MUGG); Diversity, Equity and Inclusion; Developers/OS/Small Biz; Tribal GIS; and Driftless Area GIS User Group. WLIA features special interest groups as a resource for members.

STRENGTHENING CAREER CONNECTIONS: A DROP-IN WORKSHOP

Preparing for that upcoming interview? Wish you could do a dry run? Need tips on interviewing? Just starting the process and want a resume reviewed before sending it out? Do you have general career questions? On Thursday, February 24, stop by the Grand Libelle Parlor for free career advice, speak with potential future employers and professionals, have your resume reviewed, and try your hand at a mock interview with professionals from across the potential career spectrum. Open to all attendees.

2022 CONFERENCE HIGHLIGHTS

February 23-25, 2022 - The Osthoff Resort - Elkhart Lake, WI

MAP GALLERY

The WLIA Map Contest is a great opportunity to share your best work with others who appreciate quality cartography and innovation. Make sure to peruse the Map Gallery at your leisure throughout the conference. On Friday at lunch, awards will be presented for the best entries in each category, in addition to special awards.

TOWN HALL MEETING

The annual WLIA Town Hall meeting will be conducted on Thursday and Friday during lunch, along with the 50/50 raffle. The meeting will contain the annual report, which includes the President's Report, Committee Reports, Secretary's Report, and Treasurer's Reports. The meeting will also afford the opportunity to discuss activities of the Association and WLIA's future direction.

NEW MEMBER MEETING

First time conference attendees, and anyone looking to learn more about WLIA, or the conference, are invited to this brief session. Seasoned WLIA veterans will share their tips on how to get the most out of the conference experience, as well as explain the various roles WLIA serves in the land information community.

LION MEETING

The annual Land Information Officer Network (LION) meeting will be held within the WLIA Conference. The meeting will take place on Wednesday, February 23 at 4:45PM.

JOB BOARD

Post your job opening or look for a new opportunity. The job board will be located near the registration area.

2022 MAP CONTEST

Please join us in the Convention Lobby on Thursday, February 24 at 3:30 PM for the Map Gallery Opening!

Base / Reference Map:

Very useful, complete, and documented map sporting good design, layout, labeling, and annotation to feature your data.

Thematic Map:

Features prominent, yet appropriate, use of cartographic techniques to share a message (e.g.: Choropleth, Prop Symbol, Dot Density, etc.).

Mapping Poster:

Informative and interesting presentation that highlights innovative geospatial projects or processes.

Black & White Map:

Any format and theme, but no hue...a special design challenge!

Brochure / Small Format Map:

Must be ANSI B (11" x 17") or smaller; any theme, scale, or extent.

Map Book or Atlas:

Must be a bound and easy-to-use map series of any theme.

Most Unique:

Unconventional, creative presentation, unique subject and/or materials.

Interactive Map:

Website or application designed to share geospatial knowledge.

Story Map:

Website or application designed to share a geospatially-focused narrative with users.

Special Awards:

- President's Choice
- People's Choice
- Best Student Map
- Best Private Sector Map
- Best Public Sector Map
- Best Hand-Drawn Map

All entries MUST include an uploaded digital version, preferably a PDF.
*** A map can only be entered in one category. ***



GEOSPATIAL SERVICES

EXPERTISE

- Aerial imagery
- Photogrammetry
- Aerial & mobile lidar
- HD laser scanning
- GIS consulting
- Hydrographic survey
- Unmanned aerial systems
- Boundary survey
- Construction staking
- Right-of-way plats
- Ground & geodetic control
- Subsurface utility engineering

SPECIALIZED APPLICATIONS

- Land information
- Transportation design
- Municipal engineering
- Forestry & agriculture
- Floodplain mapping
- Utility mapping
- Telecom & broadband

Ready for the next step? Contact Ayres today.

Ingenuity, Integrity, and Intelligence.



800.866.3103 | www.AyresAssociates.com

2022 WLIA SCHEDULE

WEDNESDAY, FEBRUARY 23, 2022

8:30 AM Registration (*Grand Libelle Coat Room*)

9:30 AM - 12:30 PM Morning Workshop Sessions

- Workshop 1: Secrets of the Parcel Fabric Pt. 1
- Workshop 2: UAS Mapping Methods and Applications
- Workshop 3: Parcel Maps vs. Survey Maps vs. Legal Status
- Workshop 4: Addressing Best Practices: A Practical Guide
- Workshop 5: Intro to R for Geovisualization, Web Maps/Apps
- Workshop 6: What is Agile/Scrum?

12:30 PM - 1:30 PM Lunch (*Grand Libelle Ballroom A*)
Board and Board Nominee Lunch
(*Grand Libelle Ballroom B*)

1:30 PM - 4:30 PM Afternoon Workshop Sessions

- Workshop 7: Secrets of the Parcel Fabric Pt. 2
- Workshop 8: How Does a Municipal GIS Person Assist Their Utilities In Benefiting From GIS
- Workshop 9: Parcel Fabric: What You Need to Know Now!
- Workshop 10: QC of Imagery, LiDAR, and Map Data
- Workshop 11: Cartographic Supper Clubbing!
- Workshop 12: Serving Imagery Using Serverless Architecture

2:00 PM - 4:00 PM WLIC Gathering (*Elkhart Lake Ballroom B*)

4:45 PM - 5:45 PM LION Meeting (*Elkhart Lake Ballroom A*)

6:00 PM - 9:00 PM "The Opening" featuring Road America's Mike Kertscher, and the "Carnival Night" Social Event (*Grand Libelle Ballroom A-C*)

WEDNESDAY
2 - 23

PRE-CONFERENCE WORKSHOPS

9:30 AM - 12:30 PM | WEDNESDAY, FEB. 23, 2022

Secrets of the Parcel Fabric Pt. 1

Grand Libelle Ballroom D

This full-day workshop will take a deep dive into the ArcGIS Parcel Fabric and explore some of the secrets in how it operates and what you need to do to be successful in transitioning to it and maintaining data in the Parcel Fabric.

Presenter: Frank Conkling, Panda Consulting

UAS Mapping Methods and Applications

Grand Libelle Ballroom E

There have been many recent advancements in UAS hardware and processing technologies, which allows organizations to collect highly accurate mapping data for small scale projects with quick turnaround times. In this workshop, we will discuss UAS mission planning, hardware capabilities, and outline a variety of engineering, utility, water resource, and local government projects. We will dive into expected accuracies of UAS data and best practices for planning, collecting and utilizing UAS for deriving meaningful mapping data.

Presenters: Tyler Kaebisch and Paul Crocker, Ayres Associates

Parcel Maps vs. Survey Maps vs. GIS Legal Status

Grand Libelle Ballroom F

The program discusses the differences between the three tools used to describe real property. During the discussion, the uses of the different purposes for each of the categories is explored. Special attention is given to the legal status given to each of the tools. There will also be an examination of the historical development of each of the tools showing how different players in the real estate used and misuse the different tools. Finally, an open period of time is available to discuss personal experiences and understanding of the different tools.

Steve Sorenson, von Briesen & Roper, SC

PRE-CONFERENCE WORKSHOPS

9:30 AM - 12:30 PM | WEDNESDAY, FEB. 23, 2022

Addressing Best Practices: A Practical Guide

Villa Gottfried Room A

Addressing, and, more specifically, documenting and managing addresses in a GIS environment, is more an art than science. This workshop will cover many considerations that need to be undertaken when establishing and maintaining GIS-based address databases and applications: History of addressing; anatomy of an address; managing addressing in GIS; public safety implications of addressing; other governmental enterprise implications of addressing; and aggregating multiple address databases into a master address database.

Presenter: Jeff Ledbetter, DATAMARK

An Introduction to R for Geovisualization, Web Mapping, and Web Applications

Villa Gottfried Room B

This interactive workshop gives participants hands-on experience using R for geovisualization, web mapping, and creating web applications. We will introduce the basics of R's syntax along with common operations in the popular IDE, RStudio. Then, we will dive into interactive examples with R packages such as sf, leaflet, rayshader, and shiny. Code snippets will be supplied, and participants will fill in missing lines as they follow along with the instructor. Workshop assistants will be available to help attendees, and no prior experience with R is necessary! Attendees will need a laptop with a web browser; no software installation is needed.

Presenters: Matt Haffner, UW-Eau Claire; Aaron Fisch (Ruesch), WI DNR

What is Agile/Scrum?

Villa Gottfried Parlor

In this workshop, we will cover the basics of Agile Scrum methodologies including the roles, artifacts, meetings, frameworks, and tools. We will compare Agile to Waterfall, and Scrum to Kanban, as well as hybrid approaches, and then discuss which would provide the most value to your office, project, or team. The presenter will show examples of how she has used Scrum on a variety of software development projects. Then we will finish with a hands-on exercise using a real-world scenario.

Presenter: Amanda Schwoegler, UW-Madison, WCER

PRE-CONFERENCE WORKSHOPS

1:30 PM - 4:30 PM | WEDNESDAY, FEB. 23, 2022

Secrets of the Parcel Fabric Pt. 2

Grand Libelle Ballroom D

This full-day workshop will take a deep dive into the ArcGIS Parcel Fabric and explore some of the secrets in how it operates and what you need to do to be successful in transitioning to it and maintaining data in the Parcel Fabric.

Presenter: Frank Conkling, Panda Consulting

How Does a Municipal GIS Person Assist Their Utilities In Benefiting From GIS

Grand Libelle Ballroom E

The workshop will go through the steps of implementing GIS or Asset Management in Municipal Utility. This session will educate the attendees on the intricacies of using a GIS within a utility department. The discussions and breakouts will address data (models, collection and maintenance), systems (utility needs, operations and reporting) and maintenance (data, systems and the utility systems).

Presenter: Jon Schwichtenberg, GRAEF

Parcel Fabric: What You Need to Know Now!

Grand Libelle Ballroom F

As editors, we are focused on the day-to-day process of keeping our data up-to-date so that users can access accurate information that is available to users at all times. It's hard to get time to take a step back and catch up on new functions and capabilities of the technology we're using. Sound familiar? If so, this workshop may be just what you need, providing a one-stop-shop to thoroughly explore the latest updates, capabilities and tips and tricks – with a special focus on the transition to ArcGIS Pro – to make editing easier and more efficient. Demonstrations will be included.

Presenter: Lisa Schaefer, Pro-West & Associates

PRE-CONFERENCE WORKSHOPS

1:30 PM - 4:30 PM | WEDNESDAY, FEB. 23, 2022

QC of Imagery, LiDAR, and Map Data

Villa Gottfried Room A

You have Digital Orthos, LiDAR, Planimetric or Contour Data for your Project Area or Project Corridor. How do you know whether the data you have is truly accurate and you received a quality produced geospatial product? In this workshop we will describe strategic steps, procedures and practices that will generate measurable QC for your geospatial data. QC steps will be outlined for both Orthophotos and LiDAR data along with Planimetric and Contour data. We will also review QC and QA procedures that data providers complete prior to delivery to clientele.

Presenters: Sonja Ellefson and Tyler Stentz, GPI

Cartographic Supper Clubbing! – A New Take on an Old Fashioned Mapping Experience!

Villa Gottfried Room B

Come relish the possibilities to geoprocess, visualize, and share unique mapping data with the world! Your workshop servers will offer a menu of ArcPro tips and Cartography tricks to analyze and display Wisconsin's unique supper club data. We'll polish off this smorgasbord by sharing some favorite map publishing cocktail recipes (aka print map and web application workflows). At the end, expect to amaze fellow WLIA members with your expanded prowess and understanding of ESRI workflows and supper clubs! We welcome folks who don't have deep expertise with ArcPro or ArcGIS Online, but an introductory knowledge is great too! To fully enjoy this feast, you will want to bring a laptop with ArcPro that is also capable of using ArcGIS Online via WiFi.

Presenters: Colter Sikora, Nicole Barbiaux, Kim Meinert, Mike Seidel

Serving Imagery Using Serverless Architecture

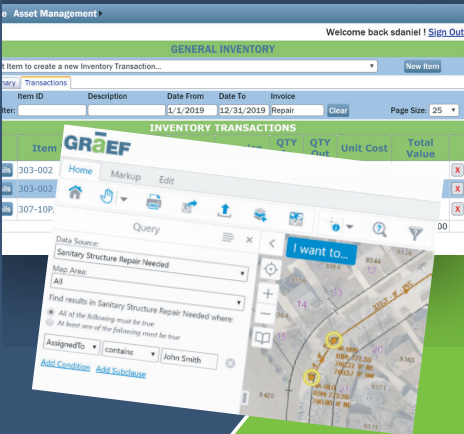
Villa Gottfried Parlor

How to use a combination of serverless architecture, AWS Lambda, S3 in combination with Cloud Optimized GeoTIFFs (COG) and Spatial Temporal Asset Catalog (STAC) to serve raster data and not get billed for compute when nobody's looking.

Presenter: Mark Korver, Amazon Web Services

A full service engineering and design firm that provides...

InfiniteGIS and GIS Services



GRāEF

www.graef-usa.com

Chicago | Green Bay | Madison | Miami | Milwaukee | Minneapolis | Orlando

DATAMARK

Data Without Boundaries.



Cloud-Native
Platform



Customer
Advocacy



NG9-1-1-Ready
GIS Data



DATAMARKGIS.COM | [@DATAMARKGIS](https://twitter.com/DATAMARKGIS)

2022 WLIA SCHEDULE

THURSDAY, FEBRUARY 24, 2022

7:00 AM - 8:00 AM	Diversity, Equity & Inclusion SIG (<i>Grand Libelle E</i>)
8:00 AM - 8:30 AM	Registration (<i>Grand Libelle Coat Room</i>) New Member Session (<i>Grand Libelle D</i>)
8:00 AM - 11:00 AM	Map Contest Registration (<i>Grand Libelle Foyer</i>)
8:30 AM - 10:00 AM	Thursday Morning Plenary (<i>Grand Libelle A-C</i>) Keynote: Pat Cummins, Esri
10:00 AM - 4:00 PM	Strengthening Career Connections: A Drop-in Workshop (<i>Grand Libelle Parlor</i>)
10:00 AM - 10:30 AM	Exhibit Hall Opening (<i>Palm Garden Ballroom</i>)

THURSDAY MORNING EDUCATIONAL SESSIONS

TRACK 1: NEXT GEN 911 (*Grand Libelle D*)

10:30 AM - 11:00 AM	DMA NextGen9-1-1 Program Update
11:00 AM - 12:00 PM	NG9-1-1 GIS Data Transition: Getting From Here To There

TRACK 2: IMAGERY & LIDAR (*Grand Libelle E*)

10:30 AM - 11:00 AM	Bringing Historical Imagery Datasets to the Digital Age
11:00 AM - 12:00 PM	Seeing Deep from High Above: Archaeological Applications of Wisconsin Lidar

TRACK 3: MAPS & APPS (*Grand Libelle F*)

10:30 AM - 11:30 AM	ArcGIS Enterprise: Deployment Methods and Lessons Learned
11:30 AM - 12:00 PM	A Novice's Adventures in Esri Web App Technologies

2022 WLIA SCHEDULE

THURSDAY, FEBRUARY 24, 2022

TRACK 4: LAND RECORDS (*Villa Gottfried A*)

10:30 AM - 11:00 AM	Moving to the ArcGIS Pro Parcel Fabric: Introductory Tips and Observations
11:00 AM - 12:00 PM	Exploring the Parcel Editing Tools in ArcGIS Pro

TRACK 5: MUNICIPAL & UTILITY (*Villa Gottfried B*)

10:30 AM - 11:00 AM	Street Sign Data Collection
11:00 AM - 11:30 AM	Next-Level City Sidewalk Replacement Using Esri Quick Capture
11:30 AM - 12:00 PM	Numbering a Storm Sewer Collection System

TRACK 6: EMERGING TECH (*Villa Gottfried Parlor*)

10:30 AM - 11:00 AM	Tips & Tricks in SQL Enterprise Geodatabases
11:00 AM - 11:30 AM	Integrating GIS with Facility Management CAD Workflows
11:30 AM - 12:00 PM	UAS Lidar Mission Planning and Applications

12:00 PM - 1:45 PM	Lunch, 50/50 Raffle, Town Hall Part 1, Hand-Drawn Map Contest, Keynote: Jason Stoker, USGS (<i>Grand Libelle A-C</i>)
--------------------	--

THURSDAY
2 - 24

THURSDAY
2 - 24

2022 WLIA SCHEDULE

THURSDAY, FEBRUARY 24, 2022

THURSDAY AFTERNOON EDUCATIONAL SESSIONS

TRACK 7: BROADBAND MAPPING (*Grand Libelle D*)

- 2:00 PM - 2:30 PM Funding Broadband Expansion with a Plan in Mind
- 2:30 PM - 3:00 PM Point of View from #71 out of 72!
- 3:00 PM - 3:30 PM How Local Geospatial Data Affect Broadband Design & Deployment

TRACK 8: ENVIRONMENT & INFRASTRUCTURE (*Grand Libelle E*)

- 2:00 PM - 2:30 PM Mapping your Environment with LiDAR
- 2:30 PM - 3:00 PM WICDI: Continuing Community Cultivation Through Culvert Collection
- 3:00 PM - 3:30 PM Updating DNR 24K Hydro to 5K

TRACK 9: MAPS & APPS (*Grand Libelle F*)

- 2:00 PM - 2:30 PM High Accuracy GNSS Positioning-as-a-Service
- 2:30 PM - 3:00 PM Jumpstarting GIS Transformation at Marquette County
- 3:00 PM - 3:30 PM Address Labels - Not just for Envelopes

TRACK 10: STATEWIDE TOPICS (*Villa Gottfried A*)

- 2:00 PM - 2:45 PM Local Redistricting - Lessons Learned, Successes, and the Future
- 2:45 PM - 3:30 PM Redistricting Refresh: Prepare Now to make your Job Easier in 10 Years

2022 WLIA SCHEDULE

THURSDAY, FEBRUARY 24, 2022

TRACK 11: MUNICIPAL & UTILITY (*Villa Gottfried B*)

- 2:00 PM - 2:30 PM Leveraging an Enterprise Site at the City of Sun Prairie
- 2:30 PM - 3:00 PM Multipurpose use of Street-Level Imagery
- 3:00 PM - 3:30 PM What's new with Diggers Hotline?

TRACK 12: EMERGING TECH (*Villa Gottfried Parlor*)

- 2:00 PM - 2:30 PM PDF Maps: From Static to Interactive to "Wait, I Didn't Know PDFs Could Do That!"
- 2:30 PM - 3:00 PM Branch Out: An Intro to Branch Versioning
- 3:00 PM - 3:30 PM Not Kicking Costs Down the Road - Long Range Transportation Planning

3:30 PM - 4:00 PM **Map Gallery Opening** (*Grand Libelle Foyer*)

4:00 PM - 5:00 PM **Special Interest Group (SIG) Meetings**

- LiDAR/Elevation (*Grand Libelle D*)
- Developers/OS (*Villa Gottfried A*)
- MUGG (*Grand Libelle E*)
- UAS (*Villa Gottfried B*)
- NextGen 911 (*Grand Libelle F*)
- Driftless Area (*Grand Libelle Parlor*)

5:00 PM - 7:00 PM **Exhibitor Reception and Silent Auction**
(*Palm Garden Ballroom*)

THURSDAY
2 - 24

THURSDAY
2 - 24

TRACK 1: NEXT GEN 911

10:30 AM - 12:00 PM

Grand Libelle D

DMA NextGen9-1-1 Program Update (30 minutes)

Jessica Jimenez, Wisconsin Dept of Military Affairs

The Office of Emergency Communications (OEC) within the Wisconsin Department of Military Affairs (DMA) is responsible for managing the statewide contract with AT&T for upgrading 9-1-1 services to Next Generation 9-1-1 (NextGen9-1-1). Local GIS data is an important component of any NextGen9-1-1 system and will be required to fully upgrade 9-1-1 services throughout Wisconsin. In this session, you will hear an update on progress being made by the NextGen9-1-1 program at DMA and what's next for implementing these services statewide.

NG9-1-1 GIS Data Transition: Getting From Here To There (60 minutes)

Jeff Ledbetter, DATAMARK | Michael Baker International

Greg Brooks, DATAMARK | Michael Baker International

The transition from E9-1-1 to NG9-1-1 is a hot topic among Wisconsin's LIOs and GIS professionals. This presentation will share coming recommendation from NENA's GIS Data Transition Working Group. You will gain positive insights with actionable takeaways.

TRACK 2: IMAGERY & LIDAR

10:30 AM - 12:00 PM

Grand Libelle E

Bringing Historical Imagery Datasets to the Digital Age (30 minutes)

Aaron Sale, Ayres Associates

Jason Komorowski, Ayres Associates

How can we utilize aerial imagery acquired decades ago now that aerial imagery acquisition, processing and viewing now exists in a nearly total digital medium? This presentation will examine where and how to gather historical imagery, as well as the methods and processes used to produce a fully georeferenced image mosaic of a county-wide dataset that can be utilized in today's map viewers.

Seeing Deep from High Above: Archaeological Applications of Wisconsin Lidar (60 minutes)

Robert "Ernie" Boszhardt, Driftless Pathways LLC.

The availability of widespread lidar coverage has initiated a worldwide archaeological revolution. Over the past decade, Wisconsin archaeologists have employed lidar to identify Indian mounds and other surface features, typically on a site-by-site basis. This presentation will review some of the isolated lidar applications and focus on two case studies. One that documents ancient quarry pits at Silver Mound in Jackson County. The second, a mound survey of the entire Bad Axe River Valley in Vernon County.

THURSDAY
2 - 24

THURSDAY
2 - 24

TRACK 3: MAPS & APPS

10:30 AM - 12:00 PM

Grand Libelle F

ArcGIS Enterprise: Deployment Methods and Lessons Learned (60 minutes)

Adam Dorn, Winnebago County

Chris Dickerson, Waukesha County

Ryan Squires, Legislative Technology Services Bureau (LTSB)

ArcGIS Enterprise has been heavily integrated into most organizations' GIS infrastructure. Winnebago County, Waukesha County, and LTSB have deployed and managed ArcGIS Enterprise within their organizations and will discuss challenges between single and multi-machine deployment, as well as hosting the Enterprise on-site and in the cloud. Each will give an overview of the systems managed, the ArcGIS components deployed (ArcGIS Server, Portal, etc.), lessons learned, and future considerations for current deployments.

A Novice's Adventures in Esri Web App Technologies (30 minutes)

Christina Dennis, State Cartographer's Office

The numerous options for getting maps and apps on the web can be overwhelming if you're new to web mapping like me. ESRI is a great place to start because they provide so many applications and tools to make web mapping fast and simple. However, with so many options, it can be hard to choose the 'right' one. I'm going to share what I've learned since diving into ESRI's toolbox. This presentation will walk through three different tools: ArcGIS API for JavaScript, Experience Builder, and WebApp Builder. For each tool, we will cover the skills you need and the types of problems you can solve.

TRACK 4: LAND RECORDS

10:30 AM - 12:00 PM

Villa Gottfried A

Moving to the ArcGIS Pro Parcel Fabric: Introductory Tips and Observations (30 minutes)

Matthew Junker, Cloudpoint Geospatial

Ready to move your Land Records Maintenance into ArcGIS Pro? Join us as we offer some insights and observations on migrating your data to the ArcGIS Pro Parcel Fabric, or upgrading your existing Fabric. Topics include the ArcGIS Pro Parcel Fabric data model, software and licensing considerations, Record-Driven and Quality-Driven Workflows, and much more.

Exploring the Parcel Editing Tools in ArcGIS Pro (60 minutes)

Frank Conkling, Panda Consulting

Parcel Editing in ArcGIS Pro, whether in the Parcel Fabric or simple features, uses several fundamental tools. This presentation will explore the Parcel Editing tools and how to best use them, including the differences in the Parcel Fabric Enabled tools.

THURSDAY
2 - 24

THURSDAY
2 - 24

TRACK 5: MUNICIPAL & UTILITY

10:30 AM - 12:00 PM

Villa Gottfried B

Street Sign Data Collection (30 minutes)

Andy Bartell, City of Sheboygan

The City of Sheboygan has been using an antiquated, non-spatial database to manage street sign locations for decades. In 2020 a modernization approach was designed in GIS to migrate, collect, and manage this physical asset by the Department of Public Works. Using GIS, the City of Sheboygan is now undertaking the process of a multi-year effort to catalog every one of the 30-40 thousand street signs in our municipality using Esri GIS solutions.

Next-Level City Sidewalk Replacement Using Esri

Quick Capture (30 minutes)

Brian Armstrong, Symbiont

Kim Wirth, City of Oconomowoc

The City of Oconomowoc managed their Sidewalk Replacement Program through cumbersome Microsoft Excel spreadsheets. They wanted to bring their data into a spatial environment for pinpoint accuracy with quick-reference visuals to accurately track their assets when sidewalk repairs are made. The City also wanted to know which sidewalks would be impacted during the replacement process. Symbiont collected each square foot of sidewalk pad information using the Esri Quick Capture application. The time-saving efficiency and improved system capacity of the Esri Quick Capture application—which can create datasets from scratch and populate them quickly—helped the City of Oconomowoc reach their goal of streamlining sidewalk collection data.

Numbering a Storm Sewer Collection System (30 min.)

Gene Olig, City of Fond du Lac

Over the years the City of Fond du Lac has used a few different approaches for numbering storm sewer assets - including manholes, catch basins, inlets, outlets, pump stations, and pipes. We developed a system a few years ago that has been working well for us for various reasons, such as for performing inspections, accommodating for future growth, and identifying flow patterns. In this presentation, I would like to share our storm sewer numbering methodology with others who may be in need of developing a system of their own.

TRACK 6: EMERGING TECH

10:30 AM - 12:00 PM

Villa Gottfried Parlor

Tips & Tricks in SQL Enterprise Geodatabases (30 minutes)

Scott Daniel, GRAEF

We'll peek under the hood of SQL Spatial databases and show you how you can easily update attribute domains, field order and field type. We'll also explore the advantages of views for calculated values and dynamic layers.

Integrating GIS with your Facility Management CAD Workflows (30 minutes)

Jonathan Hodel, Cloudpoint Geospatial

This session will look at some key ways to integrate the CAD and GIS environments and how organizations using only CAD data for facility maintenance can benefit from adding GIS tools. Using GIS for facility management can streamline workflows and centralize floor plan management into one location eliminating data silos. This session will talk through some techniques on how to streamline workflows for building and maintaining GIS layers from your CAD floor plans within Esri's ArcGIS environment. Users will be provided with helpful tips and resources on how to plan and prepare for migration before it takes place. Finally we will take a look at the 3D rich environments of GIS and how they can enhance facility management user engagement.

UAS Lidar Mission Planning & Applications (30 min.)

Tyler Kaebisch, Ayres Associates

Advancements in UAS hardware and Lidar technologies have provided opportunities for organizations to gather highly accurate and dense Lidar point clouds for small scale projects with quick turn around times. This presentation will outline a variety of projects, with varying challenges, specifications and client needs. We will review steps for planning successful UAS Lidar missions and detail UAS Lidar system specifications and applications. Assessing site suitability and the size of project area are important factors for UAS projects. Dense point clouds will be explored from engineering and water resource projects.

THURSDAY
2 - 24

THURSDAY
2 - 24

TRACK 7: BROADBAND MAPPING

2:00 PM - 3:30 PM

Grand Libelle D

Funding Broadband Expansion with a Plan in Mind (30 minutes)

Colter Sikora, Public Service Commission of Wisconsin

The need to provide Broadband access to all in Wisconsin continues to be a top priority in state government. The Public Service Commission of Wisconsin (PSC) must leverage funding mechanisms and Broadband deployment intelligence to guide its grant program. Join us as the PSC's mapping team explains how they work with internet providers and additional partners to gain knowledge supporting Broadband expansion. Specific topics may include, but not be limited to, collecting coverage data from providers, gathering coverage feedback from the general public, and monitoring the success of broadband grant projects.

Point of View from #71 out of 72! (30 minutes)

April Schoolcraft, Jackson County

At the end of 2020, Jackson County discovered that they were ranked as 71 out of 72 counties for percent of rural population broadband accessibility. However, solely having a poor ranking didn't trigger the broadband service providers rush in...yet. What steps has Jackson County's Broadband Workgroup taken to make their needs appealing to the service providers? How does a County Government help the taxpayers become aware of this unique opportunity to attract service providers and actually have their needs met? How can the land information office play a role in getting better broadband options for our taxpayers, and what geographic data has proven to be important? Join April Schoolcraft in a casual discussion regarding the journey so far.

How Local Geospatial Data Affect Broadband Design & Deployment (30 minutes)

Ken Las, Reedsburg Utility Commission

Accurate, up-to-date geospatial data help drive the design and deployment of Broadband networks. Wisconsin's Internet Service Providers (ISPs) are no exception to this. One of Wisconsin's ISPs will describe their use of local geospatial data to plan the expansion of their coverage area. Learn how improved local and statewide geospatial data acquisition and accountability, including for permitting, can help streamline Broadband deployment. The importance of accurate coverage maps for planning Broadband grant proposals will also be discussed.

TRACK 8: ENVIRO & INFRASTRUCTURE

2:00 PM - 3:30 PM

Grand Libelle E

Mapping your Environment with LiDAR (30 minutes)

Adam Derringer, Ayres Associates

Processing and viewing LiDAR derivatives is time consuming, confusing, and can be difficult for some computers to handle. This leaves many to only use derived DEMs and contours from the LiDAR. As a major provider of Aerial LiDAR, Ayres works with clients to try and extract more value from this critical foundational layer. One area of focus has been developing a suite of environmental LiDAR layers that can help land managers locate and mitigate risks across the landscape. Whether its locating exactly where your culverts are, creating Enhanced Hydrography Datasets to map water flow, completing inundation mapping, finding closed depressions, or assessing risk of erosion, analysis of LiDAR can put your data to work to help derive answers for departments across your organization. This presentation will dive into the creation and use cases for the next generation of GIS layers derived from LiDAR base products. Be prepared to explore the terrain and environment with help of Lidar!

WICDI: Continuing Community Cultivation Through Culvert Collection (30 minutes)

*Melanie Kohls, UW State Cartographer's Office & WI Coastal Mgmt
Genevieve Burgess, UW State Cartographer's Office*

The Wisconsin Coastal-Management Data Infrastructure project continues to build on its goals of increasing tools, training, and data geared toward culvert mapping in the Lake Superior region and beyond. Recent updates include development of culvert collection tools, a culvert database web app, and community expansion to the Lake Michigan coast. Tune in to our presentation to hear these updates (and more), and to learn how you may want to get involved with WICDI as we continue to grow.

THURSDAY
2 - 24

THURSDAY
2 - 24

TRACK 8: ENVIRO & INFRASTRUCTURE

2:00 PM - 3:30 PM (cont.)

Updating DNR 24K Hydro to 5K (30 minutes)

Larry Cutforth, WI Department of Natural Resources

William Ceelen, WI Department of Natural Resources

Zachary Schaefer, WI Department of Natural Resources

24K Hydro is a statewide dataset that represents rivers, lakes, streams and other hydrography features. The WI Department of Natural Resources developed 24K Hydro over 20 years ago by digitizing 1:24,000 scale USGS topo maps. Business needs for nutrient management and other programs now require more accurate and complete hydro data. A pilot project is underway in Manitowoc and Kewaunee counties to meet these needs by updating hydro data to a 1:5000 scale (aka 5K). This presentation will cover requirements, technical methods, data model options and next steps for developing 5K hydro statewide.

TRACK 9: MAPS & APPS

2:00 PM - 3:30 PM

Grand Libelle F

High Accuracy GNSS Positioning-as-a-Service (30 min.)

Gale Shea, Seiler Geospatial

Larry Heavner, Seiler Geospatial

Trimble® Catalyst is a revolutionary GNSS concept delivering positioning-as-a-service to Android and iOS devices. With the addition of the simple, lightweight Trimble DA2 GNSS receiver and an on-demand accuracy-based subscription, turn your smartphone or tablet into a precision mapping, navigation, and measurement tool you can use with any location enabled app or service. Join Seiler geospatial experts in an overview of this newest version of state-of-the-practice tech for field mapping and data collection.

Jumpstarting GIS Transformation at Marquette County (30 minutes)

Matt O'Connell, Marquette County

Alex Lange, Pro-West & Associates

In need of a way to meet increasing requests for mapping solutions, Marquette County (population 15,000) set out to modernize how data and information was utilized internally by County departments and distributed to the public. Discover how the County transformed its GIS program and ignited organizational change, improved citizen engagement and streamlined internal operations. Explore the technology that was deployed to enable this transformation including enterprise GIS, a public-facing ArcGIS Hub site, internal solutions, integrated GIS and tax data and parcel fabric, how the County will support the new implementation and ensure its GIS program maintains momentum.

Address Labels - Not just for Envelopes (30 minutes)

Erin Strickler, Cloudpoint Geospatial

In this presentation, learn how to leverage labels and symbology in ArcGIS Pro to assist you in your address editing workflows. And like your mom tried to sneak in your vegetables, we'll sneak in some attribute rules to allow you to have some real-time visual feedback while you are editing.

THURSDAY
2 - 24

THURSDAY
2 - 24

TRACK 10: STATEWIDE TOPICS

2:00 PM - 3:30 PM

Villa Gottfried A

Local Redistricting - Lessons Learned, Successes, and the Future (45 minutes)

Ryan Squires, Legislative Technology Services Bureau

Zach Robinson, Legislative Technology Services Bureau

The decennial local redistricting is complete! Once every ten years, the U.S. Census Bureau publishes updated census information reflecting changes in the population since the previous census. In the State of Wisconsin, the Legislative Technology Services Bureau (LTSB) receives and processes the census data, and then provides the software and technology to perform redistricting. County and municipal governments must then create new county supervisory district boundaries and municipal wards using the P.L. 94-171 Redistricting Dataset.

This decade, Wisconsin's Local Redistricting process began on August 16, 2021. LTSB will provide an overview on the successes and challenges faced during this decade's unique redistricting cycle. We will also describe the CBAS data collection, and its importance in correctly aligning Census TIGER lines with local data in Wisconsin for the 2030 redistricting cycle. Then open the discussion up for audience participation on lessons learned and how to prepare for the future.

Redistricting Rehash: Prepare Now to make your Job Easier in 10 Years (45 minutes)

Jennifer Borlick, Rock County

Kelly Felton, Sauk County

Jim Landwehr, Waukesha County

Join our presenters as they deconstruct the redistricting process from preparing data for the different Census programs to publishing a final supervisory district plan. How do all the pieces fit together and how can you save time when time is your most limited resource? Learn how to document the process, create consistent data, and keep valuable resources at your fingertips to make the job easier in 10 years. Not involved in redistricting this year, but you will potentially be in the next cycle? Learn the questions to ask now to be ready for what comes down the pike. While this session focuses on redistricting, it will be beneficial for anybody that has an infrequent recurring program.

TRACK 11: MUNICIPAL & UTILITY

2:00 PM - 3:30 PM

Villa Gottfried B

Leveraging an Enterprise Site at the City of Sun Prairie (30 minutes)

Lou Rada, City of Sun Prairie

The GIS Team recently created a maintenance schedule for all data, maps and applications. Next we realized a need for a centralized location which every City department could readily access. The solution was to deploy a department based Enterprise Site. This proactive approach has empowered departments to not only access their maps and applications, but also other related departments. This same approach can be developed in a AGOL Hub Site environment.

Multipurpose use of Street-Level Imagery (30 minutes)

Bill Wetzel, Cyclomedia

Many local governments and utilities rely on technology initiatives that optimize management of properties, assets, and infrastructure. High resolution street level imagery, LiDAR, software tools and asset data collection that enable jurisdictions to move towards more efficient data-driven operations. In this session, we will provide an overview of street level imagery resources (open-source and professional grade), showcase SaaS applications and integration with GIS and other platforms. This session will showcase local case studies, specifically the City of Milwaukee, demonstrating how agencies are leveraging street level imagery and LiDAR resources to support their operations.

What's new with Diggers Hotline? (30 minutes)

Chad Krueger, Diggers Hotline

This presentation will provide an update on the latest information from Diggers Hotline. Be sure to bring your questions for a Q&A session with the presenter.

THURSDAY
2 - 24

THURSDAY
2 - 24

TRACK 12: EMERGING TECH

2:00 PM - 3:30 PM

Villa Gottfried Parlor

PDF Maps: From Static to Interactive to “Wait, I Didn’t Know PDFs Could Do That!” (30 minutes)

Hayden Elza, Wisconsin State Cartographer’s Office

You’ve probably used PDF maps before and you’ve probably even heard of a GeoPDF, but did you know that PDFs can have javascript? In this talk I will explore PDF maps from the simple interactive map exported from QGIS or GDAL to a more complicated example the pushes the limits of what can be achieved in PDFs.

Branch Out: An Intro to Branch Versioning (30 minutes)

Hunter Ray, Cloudpoint Geospatial

Enterprise geodatabase versioning is an integral part of enterprise GIS and allows for flexible and manageable workflows for multi user editing scenarios. This presentation will cover the basics of Branch Versioning, the newest variety of database versioning for Esri users. This new versioning has been reconfigured to alleviate some of the pain-points of Traditional Versioning, and relies on a feature services-based platform for version use and management. In this presentation we will go over some of the basics of the Branch Versioning platform, then demonstrate publishing and using versions at the feature service level. It’s time to Branch out!

TRACK 12: EMERGING TECH

2:00 PM - 3:30 PM (cont.)

Not Kicking Costs Down the Road - Long Range Transportation Planning (30 minutes)

Michael Vander Sanden, Washington County

In an effort to achieve a long range financially sustainable transportation maintenance plan, Washington County brought together IT and GIS to build a series of applications to determine cost estimates to reconstruct and maintain its highway system. We’ve now expanded the programs for use within our municipalities to factor in PASER road ratings, average daily traffic, costs to replace the underlying utilities and inflation to provide decision makers the data to get a handle on infrastructure maintenance. Using ESRI Dashboards, WebAppbuilder as well as PHP programming, I’ll demonstrate the applications as well as the data preparation involved.

THURSDAY
2 - 24

THURSDAY
2 - 24

Your Complete...
Data Asset Management Source



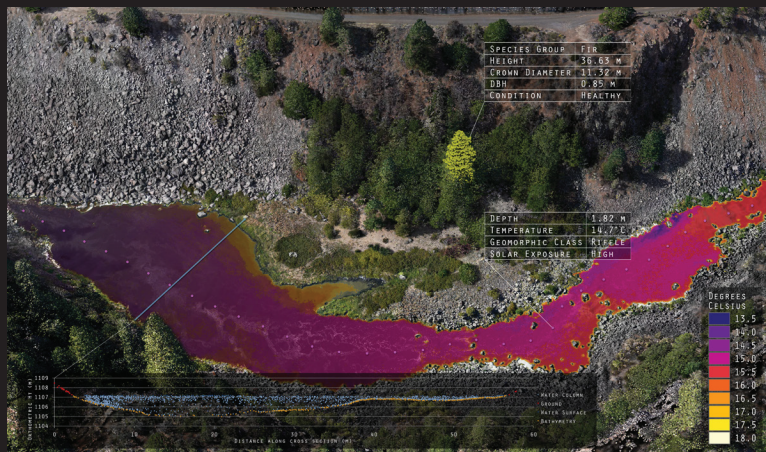
SCAN ME



We can support you on-site, virtually, at your facility or ours

- Training
- Rentals
- Sales
- Support
- Service/Repairs

9755 Airways Ct.
Franklin, WI 53132
mapping@seilerinc.com
www.seilergeo.com



Anyone Can Take A Picture
We Tell Its Story

NV5 GEOSPATIAL
NV5Geospatial.com

PROWEST
& Associates

Award-winning GIS land records services

- 📍 Parcel Fabric implementation and training
- 📍 Enterprise GIS implementation
- 📍 Esri solution configuration
- 📍 System integration
- 📍 System architecture design and deployment
- 📍 Support packages for local government

EMPOWERING
ALL COMMUNITIES
TO LIVE BETTER.

www.prowestgis.com



LandNav



ALL EYES ARE ON YOU TO DELIVER SMART COMMUNITIES.

WHAT WILL YOU DO?

Smart communities are not something off in the distant future. They're happening now. Thousands of jurisdictions are applying ArcGIS® technology for planning and engineering, operational efficiency, data-driven performance, and civic inclusion. Start your own smart community journey.

go.esri.com/eyes-on-smart

2022 WLIA SCHEDULE

FRIDAY, FEBRUARY 25, 2022

- 7:00 AM - 8:00 AM Past Presidents Breakfast (*Elkhart Lake A*)
8:00 AM - 8:30 AM Registration (*Grand Libelle Coat Room*)
Coffee with Exhibitors (*Palm Garden Ballroom*)
8:30 AM - 9:30 AM Friday Morning Plenary (*Grand Libelle A-C*)
Keynote: Lucas Joppa, Microsoft
9:30 AM - 10:00 AM Break with Exhibitors; Silent Auction Ends (*Palm Garden Ballroom*)

FRIDAY MORNING EDUCATIONAL SESSIONS

TRACK 13: NEXT GEN 911 (*Grand Libelle D*)

- 10:00 AM - 11:00 AM The Path to NG911 for Rural Counties
11:00 AM - 11:30 AM Managing Addressing Data for Multiple Systems

TRACK 14: ENVIRONMENT & INFRASTRUCTURE (*Grand Libelle E*)

- 10:00 AM - 10:30 AM Lessons Learned in using the Statewide Parcel Map for Conservation Prioritization
10:30 AM - 11:30 AM Systematic Conservation Planning in Tsay Keh Dene Territory: Incorporating Climate Change and Interweaving Traditional Ecological Knowledge

TRACK 15: PROFESSIONAL DEVELOPMENT (*Grand Libelle F*)

- 10:00 AM - 10:30 AM To GISP, or not to GISP, that is the question.
10:30 AM - 11:30 AM Modernizing WLIA: Sneak Peek at the New Website and Member Portal

2022 WLIA SCHEDULE

FRIDAY, FEBRUARY 25, 2022

TRACK 16: MOBILE GIS (*Villa Gottfried Parlor*)

- 10:00 AM - 10:30 AM Automation, Automation, Automation
10:30 AM - 11:00 AM Survey123 Tips and Tricks
11:00 AM - 11:30 AM Mobile GIS Data Collection Alternatives: The Fulcrum App in New Zealand and Ohio

TRACK 17: LAND RECORDS (*Villa Gottfried B*)

- 10:00 AM - 11:00 AM Perpetuating Corners: A Monumental Task
11:00 AM - 11:30 AM Finding the Missing Addresses - Ensuring Completeness and Accuracy in the GIS Addressing Database

TRACK 18: STATEWIDE TOPICS (*Villa Gottfried A*)

- 10:00 AM - 10:30 AM WSRS2022 Task Force Update
10:30 AM - 11:00 AM Creation of the E3 Statewide PLSS Database
11:00 AM - 11:30 AM Data Supply Chain Management

- 11:30 AM - 12:00 PM Break; Collect Silent Auction Items (*Palm Garden Ballroom*)
12:00 PM - 1:30 PM Lunch, Town Hall Part 2, Map Contest Awards and Prizes (*Grand Libelle Ballroom A-C*)
1:30 PM - 3:00 PM WLIA New Board Meeting (*Boardroom*)

FRIDAY
2 - 25

FRIDAY
2 - 25

TRACK 13: NEXT GEN 911

10:00 AM - 11:30 AM

Grand Libelle D

The Path to NG911 for Rural Counties (60 minutes)

Gary Hoaglund, Colligo GIS

Ryan Person, Colligo GIS

Join us for a walk-through of NG911 processes, the benefits of GIS for 911 data management, and a roadmap to make your data NG911 compatible. We will share examples from other rural county systems, best practices, and tips for building a streamlined management process for NG911. Rural communities share many of the same needs as larger urban communities but often have limited funding or staff to manage their GIS infrastructure and assets. The same can often apply to 911 data as well. We'll show how utilizing GIS platforms and processes, with minimal requirements on existing departments, these goals can be achieved.

Managing Addressing Data for Multiple Systems (30 minutes)

Erin Strickler, Cloudpoint Geospatial

As Next Generation 9-1-1 sweeps across the country, Public Safety Answering Points, counties, and municipalities everywhere are wrestling with how to maintain address data for the multiple business systems that use it. Addresses were already being used in Computer Aided Dispatch and Asset Management systems, among others, and now NG9-1-1 has been added to the mix. In this presentation learn how multiple PSAPs of all different sizes have tackled this problem so that you can make the best decision for your organization.

TRACK 14: ENVIRO & INFRASTRUCTURE

10:00 AM - 11:30 AM

Grand Libelle E

Lessons Learned in Using the Statewide Parcel Map for Conservation Prioritization (30 minutes)

Mike Koutnik

Land trusts are increasingly applying energy and resources to proactively targeting their conservation efforts. Spurred by "30 by 30" and climate resiliency initiatives, a growing number of land trusts are using GIS to help prioritize these proactive "targeting" efforts. In this session how two land trusts are applying the statewide parcel map, as well as other "open data" sources to enhance their work. You will also learn about surprises discovered in the data, and cautions to consider when applying them.

Systematic Conservation Planning in Tsay Keh Dene Territory: Incorporating Climate Change & Interweaving Traditional Ecological Knowledge (60 minutes)

Christopher Morgan, Wisconsin Department of Natural Resources

Systematic Conservation Planning (SCP) is the practice of comprehensively assessing a landscape for its conservation value via geospatial analysis. This research project applied SCP principles and tools to Tsay Keh Dene Nation Territory in north-central British Columbia, Canada. Working with the Tsay Keh Dene community, we articulated conservation goals and determined important features on the landscape that helped attain those goals. This effort also examined climate change and connectivity impacts on conservation, comparing which lands are most worth conserving today versus 30 and 60 years from now. Finally, this work explored the interweaving of Traditional Ecological Knowledge with the Western science-based SCP framework to ensure a more holistic and inclusive outcome. Our findings both validated ongoing conservation efforts in the Territory and identified additional high-value areas for future consideration. This research can also serve as a guide for other accessible TEK-focused or community-led SCP efforts.

FRIDAY
2 - 25

FRIDAY
2 - 25

TRACK 15: PROFESSIONAL DEVELOPMENT

10:00 AM - 11:30 AM

Grand Libelle F

To GISP, or not to GISP, that is the question. (30 minutes)

Mike Seidel, Ayres Associates

GISP Certification demonstrates a commitment to behaviors that enrich the profession, helps individuals grow professional knowledge and skills, establishes professional credibility, differentiates individuals from other professionals, and increases earning potential. In this presentation we will discuss: who administers the GISP certification, why you as an individual might want to pursue certification, and how to go about getting certified.

Modernizing WLIA: Sneak Peek at the New Website and Member Portal (60 minutes)

Shelley Witte, WLIA

We all like finding ways to do work projects and tasks more efficiently. That's certainly no exception for the group of dedicated volunteers and one *amazing* executive services manager who keep WLIA operations running smoothly. Early in 2021, a search began to find a platform that would make it easier to manage the WLIA membership and events database, update our aging website, and provide more benefits to WLIA members. Come see the new and improved website as well as a demo of the new member portal.

TRACK 16: MOBILE GIS

10:00 AM - 11:30 AM

Villa Gottfried Parlor

Automation, Automation, Automation (30 minutes)

Tyler DeBruin, Town of Grand Chute

If the title hasn't given it away, this presentation will cover automation of workflow. This presentation will cover a variety of programs including ArcGIS Online, ArcGIS Field Maps, Survey123, & Integromat. Utilizing these programs together, can help automate and connect a variety of stakeholders within, and outside of your organization. Real life examples will be shown on how an individual can automate reports, mapping edits, data creation, emails, text messages, survey responses, lists and much more.

Survey123 Tips and Tricks (30 minutes)

David Buehler, City of Marshfield

A brief overview of tips and techniques to enhance your Survey123 forms. Covering, but not limited to: integrations from existing services, layout options, calculations, and workflow considerations.

Mobile GIS Data Collection Alternatives: The Fulcrum App in New Zealand and Ohio (30 minutes)

Alex Smith, EHS Support LLC

There are numerous field collection solutions that are tied to commercial GIS software platforms, but what are your options if those tools do not fit with your project? EHS Support has set up a field sampling program that uses location-aware digital field forms created with the Fulcrum Mobile Data Collection App. Fulcrum is a flexible low-code application that can be used to implement anything from field inspection photo logs, to lithology logs, to groundwater purge logs. To demonstrate this flexibility, we'll explore two projects on different continents: a lead-based paint inspection field effort in New Zealand and a remediation system inspection and sampling field effort in Ohio. We'll cover project set up, use in the field, data export and analysis, and advantages/disadvantages of this alternative field data collection application that combines both user friendly field forms and location-aware GIS data collection.

FRIDAY
2 - 25

FRIDAY
2 - 25

TRACK 17: LAND RECORDS

10:00 AM - 11:30 AM

Villa Gottfried B

Perpetuating Corners: A Monumental Task (60 minutes)

Dean Roth, Eau Claire County

Original and perpetuated monuments represent the footprints of the surveyor and the true corners they were intended to represent. From Section Corners to private property corners, monuments can represent the best evidence of corner location - If they are properly retraced. But what if they're wrong?

Find the Missing Addresses - Ensuring Completeness and Accuracy in the GIS Addressing Database (30 minutes)

Paul Bernard, Wood County

Wood County has a few challenges that are not unfamiliar to other Wisconsin Counties when it comes to addressing. Many municipalities doing their own addressing, inconsistent maintenance, staff turnover and insufficient notification have all contributed to many gaps in the GIS addressing database. Wood County pursued a project through DATAMARK - the force multiplying Address Comparison and Evaluation or ACE that compared our GIS addressing database against a handful of other addressing databases to ensure that our GIS addressing database was complete and accurate. The ACE process will be discussed as well as the processing of the deliverable and ultimate integration into Wood County's GIS addressing database.

TRACK 18: STATEWIDE TOPICS

10:00 AM - 11:30 AM

Villa Gottfried A

WSRS2022 Task Force Update (30 minutes)

Richard Kleinmann, WSRS2022 Task Force

Howard Veregin, WSRS2022 Task Force

Learn about the latest happenings regarding the move to the new horizontal and vertical datums.

Creation of the E3 Statewide PLSS Database (30 minutes)

David Vogel, State Cartographer's Office

Ana Wells, State Cartographer's Office

Tom Kazmierczak, State Cartographer's Office

In November of 2021, the State Cartographer's Office and WLIP released the 3rd version of the Statewide PLSS database, a sub-project of the greater Statewide Parcel Map Initiative. The E3 database relies on county coordinate data whenever possible, allowing for spatial improvements over previous statewide PLSS layers. Our talk will focus on the characteristics of the database and the technical aspects of its creation.

Data Supply Chain Management (30 minutes)

Jeff Ledbetter, DATAMARK - Michael Baker International

Coalescing countywide or regional datasets require current data from multiple stakeholders on a on-going basis. This presentation will focus on considerations local data providers should address when participating in a countywide/regional dataset construct. We'll use case studies to demonstrate the considerations.

FRIDAY
2 - 25

FRIDAY
2 - 25



Asset Management
Data Collection
ArcGIS Set-up and Training
Maps, Apps, and Dashboards
Professional GIS Services



Introducing

Microimages + Syncarto + Paris Geospatial
as



DATUM
GEOSPATIAL

by



EXHIBIT HALL FLOORPLAN

February 23-25, 2022 - The Osthoff Resort - Elkhart Lake, WI

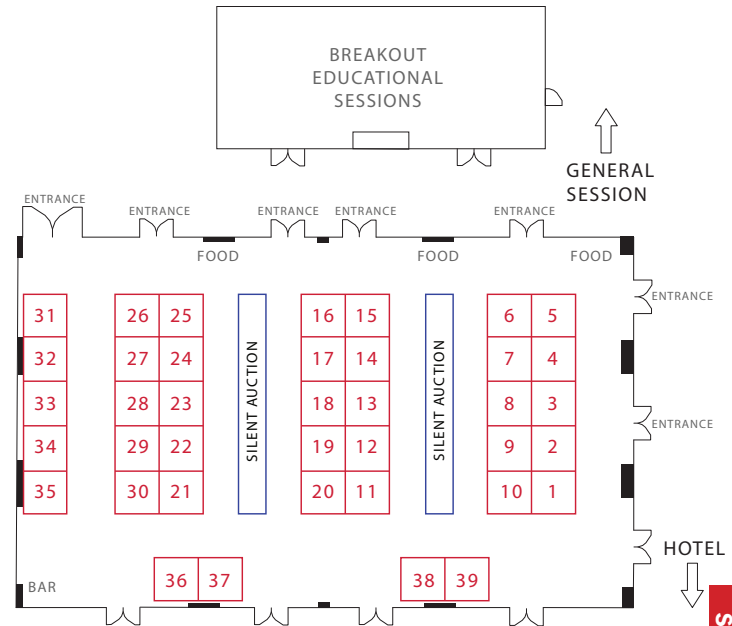


Exhibit Hall Hours:

Thursday, February 24:
10:00 AM - 7:00 PM

Friday, February 25:
8:00 AM - 10:00 AM

Refreshments during the conference will be offered in the Exhibit Hall
Exhibitor Reception is Thursday night from 5:00 PM - 7:00 PM

EXHIBITORS & SPONSORS

2022 WLIA EXHIBITORS

February 23-25, 2022 - The Osthoff Resort - Elkhart Lake, WI

PLATINUM SPONSOR

Ayres

<https://AyresAssociates.com>

Booth 15 & 16



Ayres has been a platinum sponsor of the WLIA annual convention since 2004. With a team of 350+ innovative problem-solvers nationwide, we stand with integrity behind thousands of projects that strengthen communities and our country's infrastructure, economy, and environment. Clients notice our project managers' ability to translate and transform every detail into actionable, understandable, smoothly coordinated pieces of a successful project. Side-by-side with our client partners, our project managers serve as the confident, communicative navigators at the helm of each project. Their tools and expertise include geospatial, civil and municipal engineering, transportation, structural design and inspection, river engineering and water resources, architecture, mechanical/electrical/plumbing engineering, landscape architecture, environmental, planning and development, and telecommunications and SUE.

Baxter & Woodman



<https://baxterwoodman.com>

Booth 13

Baxter & Woodman consists of Consulting Civil Engineers - Spatial Technology, Master Planning, Asset Management, Data Collection, and more. We concentrate on the planning, design and construction of public infrastructure (Roadways/Highways, Water/Wastewater, Water Resources/Storm Water, Technology-related Controls/Automation, GIS, and more). We are focused on building community value for clients we serve through clean water, safe roads and reliable wastewater treatment.

2022 WLIA EXHIBITORS

February 23-25, 2022 - The Osthoff Resort - Elkhart Lake, WI

OPENING SPONSOR

Cityworks

<https://www.cityworks.com>



Cityworks, a Trimble Company, is the leading GIS-centric solution for public asset management and community development. Built exclusively on Esri® ArcGIS®, Cityworks is designed to help organizations manage public assets and associated data, work activities, and business processes. Cityworks is Empowering GIS® at more than 700 organizations around the world.

SILVER SPONSOR

Cloudpoint Geospatial

<https://cloudpointgeo.com>

Booth 01



Cloudpoint Geospatial is a leading provider of Geographic Information Systems (GIS) solutions for organizations within public works, facilities, land records, utilities, transportation, and engineering sectors. As your trusted Esri business partner, we help people drive intelligent decision making using mapping technology. We are here to bring you ArcGIS Desktop, Enterprise, Portal and Online solutions all delivered through the Esri platform. Our portfolio varies from large asset inventories to big data solutions delivered through the cloud.

EXHIBITORS & SPONSORS

EXHIBITORS & SPONSORS

2022 WLIA EXHIBITORS

February 23-25, 2022 - The Osthoff Resort - Elkhart Lake, WI

Colligo GIS

<https://colligogis.com>

Booth 08



Colligō GIS

Colligo GIS is a software company that has developed a cloud-based desktop and mobile GIS platform which provides real-time data collection and asset management in a maintenance-free environment. We are also a GIS services provider for counties, municipalities, public and private utilities, NG-911, and tribal clients.

Cyclomedia

<https://cyclomedia.com/us>

Booth 35

cyclomedia

Cyclomedia is the leading provider to local US Governments of dynamic, high definition, 360-degree street level imagery and terrestrial LiDAR enhanced by innovative AI-powered asset data extraction and analytics. Our local government solution features advanced data capture technologies, patented image processing techniques, and advancements in automated data extraction. Cyclomedia delivers over 250,000 miles of the highest quality street-level imagery and analytics each year, and has successfully completed more than 60 local government projects across the US and Canada.

2022 WLIA EXHIBITORS

February 23-25, 2022 - The Osthoff Resort - Elkhart Lake, WI

PLATINUM SPONSOR

DATAMARK

<https://datamarkgis.com>

Booth 25 & 26



As trusted advisors in public safety, DATAMARK brings comprehensive, real-world expertise in police, fire, EMS and 9-1-1 leadership roles to Next Generation 9-1-1 transitions. The DATAMARK team leads the industry by shaping rules and legislation, and by building a suite of products and services that ensure accurate emergency response location data in life-critical situations. DATAMARK empowers its team and stakeholder partners to foster trusted relationships and cultivate data integrity for informed decision making. DATAMARK, the public safety GIS team of Michael Baker International, has decades of proven experience in mission-critical government addressing projects. The team works with clients to solve their complex needs, from data quality checks and addressing to workflow analysis and more.

BRONZE SPONSOR

Esri

<https://esri.com>



Esri, the global market leader in geographic information systems (GIS), offers the most powerful mapping and spatial analytics technology available. Since 1969, Esri has helped customers use The Science of Where to unlock the full potential of data to improve operational and business results. Today, Esri software is deployed in more than 350,000 organizations including the world's largest cities, most national governments, 75% of the Fortune 500, and more than 7,000 colleges and universities.

EXHIBITORS &
SPONSORS

EXHIBITORS &
SPONSORS

2022 WLIA EXHIBITORS

February 23-25, 2022 - The Osthoff Resort - Elkhart Lake, WI

SILVER SPONSOR

Fidlar Technologies

<https://www.fidlar.com>

Booth 09



Fidlar is the premier land records software provider for 37 counties in Wisconsin. Fidlar also specializes in software components which allow for Register of Deeds documents to be fully integrated with county GIS sites.

GPI Geospatial, Inc.

<https://www.gpinet.com>

Booth 04



GPI Geospatial, Inc. has been a premier provider of geospatial solutions for over 47 years. Our mission is to map the foundation for infrastructure improvements that enhance the connectivity between people and communities. It's our vision to be the most trusted provider of precision mapping, imagery, LiDAR, and surveying services within the transportation, planning, design, construction, and government communities. We provide innovative surveying and mapping solutions to state, local and federal governments, as well as private-sector clients. GPI owns and operates multiple aircraft and vehicles equipped with imagery and LiDAR sensors, to provide customized solutions for our clients. Our greatest asset remains our employees, many of whom are Licensed Surveyors, Certified GIS professionals, ASPRS Certified Photogrammetrists, and Certified Mapping Scientists.

2022 WLIA EXHIBITORS

February 23-25, 2022 - The Osthoff Resort - Elkhart Lake, WI

PLATINUM & OPENING EVENT SPONSOR

GRAEF

<https://graef-usa.com>

Booth 21 & 22



GRAEF is a full service engineering, planning, and design firm that provides tailored engineering and design solutions for our clients. Our mission is to improve the physical environment for the benefit of society in a sustainable manner. GRAEF offers civil, GIS, structural, environmental, transportation, bridge, MEP, construction, industrial architecture and industrial engineering as well as landscape architecture, operations, planning, and aviation engineering consulting, in addition to land surveying from offices located in Milwaukee, Madison, Green Bay, Chicago, Miami, Orlando and Minneapolis.

BREAK SPONSOR

ITpipes

<https://www.itpipes.com>

Booth 36



ITpipes turns your pipe inspections into mapped, actionable intelligence! ITpipes provides you with planning, prioritizing, field collection and data management tools in a fully integrated ESRI Solution. The streamlined data management and powerful reporting features with dynamic mapping take your agency's pipe inspection program from proactive to predictive. Our interoperable ESRI applications provide you with inspection information when and where you need it.

EXHIBITORS &
SPONSORS

EXHIBITORS &
SPONSORS

2022 WLIA EXHIBITORS

February 23-25, 2022 - The Osthoff Resort - Elkhart Lake, WI

BRONZE & WI-FI SPONSOR

LandNav

<https://landnav.com>

Booth 24

Our company was formed almost 40 years ago, based on a vision to provide superior products and solutions using a well-built foundation of knowledge and experience. LandNav has a proven record of success that has allowed us to become an industry leader in local government solutions. Our staff believes in meeting LandNav's fundamental mission: "To transform local governments with data and solutions which maximize value for the public." While our mission has remained unchanged, our software has been on the leading edge of innovation. From changing technologies to changing needs, one thing has remained constant – our customers continue to enjoy the ease and power offered by the integrated LandNav suite of solutions. Our staff prides itself on providing timely solutions that allow customers to get their work done right and on time.



BRONZE SPONSOR

LandScan

<https://landscan.ai>

LandScan is a geospatial and agricultural technology data analytics company. LandScan was formed in 2019 with a 5-year mission to develop the most advanced and complete site characterization and analysis system available anywhere. Look for our launch of recently acquired products from Microimages, Syncarto, and Paris Geospatial under the Datum Geospatial brand soon.



2022 WLIA EXHIBITORS

February 23-25, 2022 - The Osthoff Resort - Elkhart Lake, WI

Legislative Technology Services Bureau

<https://legis.wisconsin.gov/ltsb/gis>

Booth 23

The nonpartisan Legislative Technology Services Bureau (LTSB) is responsible for providing technical support to the Wisconsin Legislature and its service agencies. The GIS Team provides legislative redistricting support, performs demographic & geographic analysis, develops interactive web maps and applications, and is in charge of the cartographic design of district maps. Every decade, the GIS team is tasked with providing redistricting expertise and training to the Legislature, as well as local municipalities and counties. The GIS team also coordinates the statewide collection of municipal GIS datasets, participates in geographic boundary improvement programs offered by the US Census Bureau, and maintains district boundary information to both the Legislature and the public.



Leica Geosystems

<https://pure-surveying.com>

Booth 30

Our "for surveyors by surveyors" culture has allowed us to deliver a lot of "world's first" innovations over the years. With a vision towards the future and our surveying mindset, we have been able to push technological boundaries that overcome real world challenges. Leica Geosystems - when it has to be right.



EXHIBITORS & SPONSORS

EXHIBITORS & SPONSORS

2022 WLIA EXHIBITORS

February 23-25, 2022 - The Osthoff Resort - Elkhart Lake, WI

WI-FI SPONSOR

MasterGraphics, Inc.

<https://mastergraphics.com>



Booth 10

MasterGraphics has provided innovative print technology to the engineering and design community for over 70 years in the central Midwest. Our mission is to provide the most advanced technology to our clients to ensure they have best-in-class processes for leveraging both 2D and 3D printing. Improving our clients' efficiency, competitive advantage, time to market, and innovation by offering state of the art solutions from valued partners is our pledge.

OPENING EVENT SPONSOR

Municipal Services Bureau (MSB)

<https://msbgovserv.com/payment-processing>



A leader in government revenue solutions since 1991. Government Payment Processing Solutions. We offer the highest level of cardholder data security (PCI level 1) and are Europay, MasterCard, and Visa (EMV Chip Card) compliant. We support a variety of payment sources, including Visa, MasterCard, Discover, American Express, JCB, ACH, and e-Check. We support the newest contactless technologies such as Apple Pay and Google Pay. We support an array of payment channels, including online, mobile, phone, in-person, and recurring payments. We can have your new payment platform up and running in as little as 60 minutes. Your new platform will include real-time analytics, workflows, and system monitoring. Your dedicated, 24/7 service team is located 100% in the U.S.

2022 WLIA EXHIBITORS

February 23-25, 2022 - The Osthoff Resort - Elkhart Lake, WI

GOLD SPONSOR

NV5 Geospatial

powered by Quantum Spatial



<https://www.nv5.com/geospatial/>

Booth 19 & 20

Quantum Spatial, Inc., an NV5 company, is North America's largest geospatial services firm, providing insights to organizations that need geospatial intelligence to mitigate risk, plan for growth, better manage resources and advance scientific understanding. We combine the widest array of advanced remote sensing technologies with proprietary processes, analytics tools, algorithms, and analysis. Quantum Spatial goes beyond data acquisition and measurement, transforming high-quality, accurate data into usable information tailored to meet our clients' needs. Major government agencies, the military, and corporate organizations of all sizes, including utilities, oil and gas producers, engineering and construction firms, depend on Quantum Spatial to revolutionize the way they use and value geospatial data through end-to-end solutions that push the boundaries of data and analytics.

Panda Consulting

<https://www.pandaconsulting.com>

Booth 11 & 12

Panda Consulting is a professional services firm specializing in Parcel Mapping and Land Records management and provides complete consulting, conversion, training and maintenance services for all related data.



Panda Consulting
Your Partners in GIS

EXHIBITORS &
SPONSORS

EXHIBITORS &
SPONSORS

2022 WLIA EXHIBITORS

February 23-25, 2022 - The Osthoff Resort - Elkhart Lake, WI

SILVER & BREAK SPONSOR

Pro-West & Associates

<https://www.prowestgis.com>

Booth 07

Pro-West's mission is to make what you do better with location technology. The Pro-West team empowers Wisconsin cities and counties with geospatial data services, solutions, and systems that deliver location transformation, help them reach their land records goals and allow them to better serve residents. Pro-West & Associates is an award-winning GIS consulting firm based in Walker, MN and has been an Esri business partner for over 30 years.



MAP GALLERY SPONSOR

Ruekert & Mielke, Inc.

<https://ruekertmielke.com>

Booth 03

Ruekert & Mielke (R/M) is a 100% employee-owned civil engineering firm with more than 70 years of experience partnering with communities and businesses to help them overcome infrastructure challenges. R/M develops and supports AssetAlly, a GIS-driven solution that solves common problems for municipalities. Built from 20+ years of input from over 50 communities, AssetAlly integrates all your community assets into a single, intuitive, digital tool that empowers your staff to be more productive with easy access to accurate infrastructure data. R/M's knowledgeable staff will guide you through a phased implementation plan to create an appropriate solution for your community and help transition your staff.



2022 WLIA EXHIBITORS

February 23-25, 2022 - The Osthoff Resort - Elkhart Lake, WI

GOLD SPONSOR

Seiler Instrument - Geospatial

<https://www.seilergeo.com>

Booth 05 & 06

Seiler is a family owned business established in 1945. We offer our clients the most advanced survey, construction, mapping/ GIS, drone equipment and software technology on the market. Seiler specializes in geospatial sales across Illinois, Indiana, Iowa, Kansas, Michigan, Wisconsin, Missouri, and Nebraska with seven offices. Our experienced staff are all industry professionals who help guide, support, and educate our clients with productivity solutions. Seiler has nationally recognized repair centers that can service and calibrate your survey, Trimble Mobile LiDAR, and construction instruments. We are an authorized distributor for Trimble, Spectra Precision, Autodesk, Esri, DJI, GeoSLAM, LaserTech and many more. Seiler stands behind all products we offer. Our diverse staff are certified trainers, drone pilots with FAA remote pilot certificates, GNSS/GISP professionals, and registered land surveyors with a large professional support team on staff to serve our customers.



Symbiont

<https://symbiontengineer.com>

Booth 18

Symbiont is a nationally recognized full-service engineering, design-build construction firm. Founded in 1981, Symbiont is a leader in municipal, energy, manufacturing, and commercial markets. From the food, beverage, brewery, and consumer packaged goods industries to renewable energy facilities, we are experts in the systems and needs of each market sector.



EXHIBITORS &
SPONSORS

EXHIBITORS &
SPONSORS

2022 WLIA EXHIBITORS

February 23-25, 2022 - The Osthoff Resort - Elkhart Lake, WI

LANYARD SPONSOR

Transcendent Technologies

<https://www.transcendenttech.com>

Booth 14

Transcendent Technologies is a provider of solutions and services for state, county, and local government entities. Our software packages include applications that support parcel management, property taxation, tax payment, general receipting, permitting activities and land conservation. Each software package is designed to integrate seamlessly with other government systems including tract indexes, document imaging, geographic information, and financial systems. This design greatly enhances the land management process, improving efficiency and reducing errors. Our understanding of government processes gives us a unique advantage in assisting government entities with custom development and integration services. Most recently, we have launched our GIS Services Division and have released our first product which is the WI Real Estate Sales Finder. Overall, TTECH can assist you in optimizing and improving your business workflow.



Turning Point Systems Group

<https://turningpointssystemsgroup.com>

Booth 37

Turning Point provides technical sales, rental, training, and service of terrestrial measuring products and laser scanning systems for Reality Capturing. Our staff offers experience in the sales of Measuring, GPS and GIS technologies. Turning Point is an authorized distributor for Leica Geosystems HDS, Carlson Software, Geomax, and Sokkia, serving Surveyors, Engineers, Law Enforcement, and Mappers throughout Great Lakes Region. We are the only authorized service and repair center serving the Midwest for calibration and repair. Turning Point is a veteran-owned business.

TURNING POINT

2022 WLIA EXHIBITORS

February 23-25, 2022 - The Osthoff Resort - Elkhart Lake, WI

West Allis Blue

<https://westallisblueprint.com>

Booth 31

West Allis Blue is a print company that specializes in wide format printer / plotters for printing GIS maps and reprographics. We also offer wall coverings, vehicle graphics, posters, banners, and signage. Built from a blueprint replication business to a full service print company, West Allis Blue brings our customers over 35 years of experience. Quality is the code that we live by. We hand picked optimal equipment to exceed industry standards and deliver you the sharpest, most unique, and stunning products. Your satisfaction is what keeps our company growing and thriving.



Wisconsin Land Information Association (WLIA)

Booth 02

<https://wlia.org>

Founded in 1987, WLIA is a grassroots organization representing a collection of concerned professionals working to develop, maintain, and apply a network of statewide land information systems. We are united by an interest in land records modernization, GIS, and related technologies, and by the need for government policies and programs that support their efficient and effective application. WLIA is a registered 501(c)(6) non-profit organization and is open to individual, non-profit, and corporate members.



EXHIBITORS & SPONSORS

EXHIBITORS & SPONSORS

2022 WLIA EXHIBITORS

February 23-25, 2022 - The Osthoff Resort - Elkhart Lake, WI

Wisconsin Real Property Listers Association (WRPLA)

Booth 29

<http://wrpla.org>



In 1951, the Wisconsin Legislature created the position of the County Real Property Lister (RPL) to ensure that lands were being represented accurately for assessment and taxation purposes. The Wisconsin Real Property Listers Association (WRPLA) is a statewide association comprised of county and municipal real property lister offices/departments.

Wisconsin Register of Deeds Association

<https://www.wrdaonline.org/>

Booth 28

The Register of Deeds files, records, and issues instruments and documents of significance both to the community as a whole and to its individual citizens. Vital records document the span of our lives from birth to death. Land records documenting title in Wisconsin are maintained. The office also maintains land records documenting title over \$613.1 billion (2020 equalized value of real property, WI Dept of Revenue) in real property in Wisconsin.



2022 WLIA EXHIBITORS

February 23-25, 2022 - The Osthoff Resort - Elkhart Lake, WI

Wisconsin Society of Land Surveyors (WSLS)

Booth 27

<https://wsls.org>



Organized in 1952, the Wisconsin Society of Land Surveyors (WSLS) is a statewide volunteer organization committed to the advancement of the surveying profession. The WSLS consists of ten chapters throughout Wisconsin. Each chapter works diligently within its region, organizing and participating in community and educational events, helping the public access licensed surveyors, and advocating in legislation and issues affecting the surveying profession.

Wisconsin State Cartographer's Office

<https://www.sco.wisc.edu>

Booth 17

The State Cartographer's Office (SCO) is Wisconsin's resource for information about maps, cartography, geographic information systems (GIS), land information systems (LIS), and geospatial technology. We support the state's geospatial community through presentations and educational workshops, technical consulting, print and digital publications, Web-based catalogs and data services, and information about events, jobs and emerging trends. The SCO provides services to a diverse array of mapping and geospatial data producers and consumers in Wisconsin. This includes helping the general public find and understand map resources through our free online and phone services. The SCO also serves as a liaison between professionals in government, education, non-profits and the private sector, helping to expand the adoption and effective use of geospatial technology and methods in these sectors.



EXHIBITORS & SPONSORS

EXHIBITORS & SPONSORS

THANK YOU



PLATINUM SPONSOR

**of the Wisconsin Land Information Association
2022 Annual Conference**

THANK YOU



PLATINUM SPONSOR

**of the Wisconsin Land Information Association
2022 Annual Conference**

THANK YOU



PLATINUM SPONSOR

**of the Wisconsin Land Information Association
2022 Annual Conference**

2022 WLIA Conference Notes

Thank you to our

PLATINUM SPONSORS



Thank you to our

GOLD SPONSORS



Thank you to our

SILVER SPONSORS



Thank you to our

BRONZE SPONSORS



Thank you to our

LANYARD, MAP GALLERY, WI-FI, OPENING NIGHT & BREAK SPONSORS

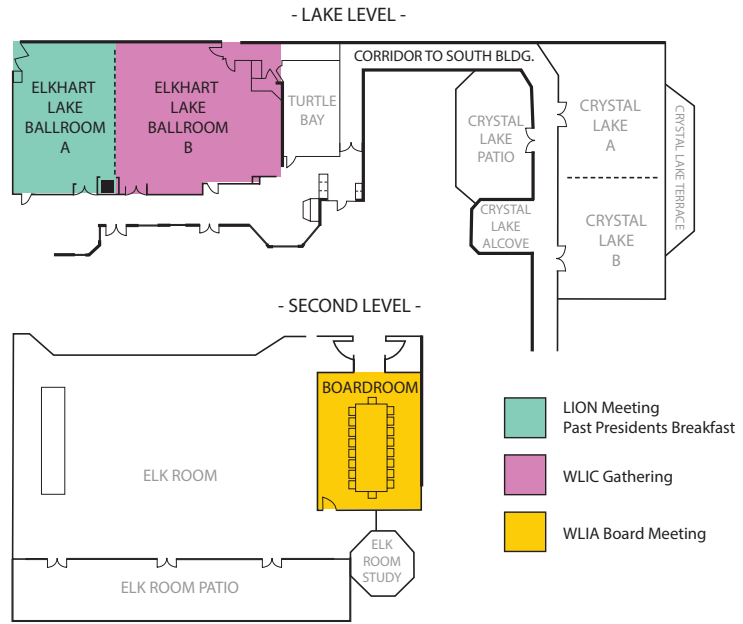
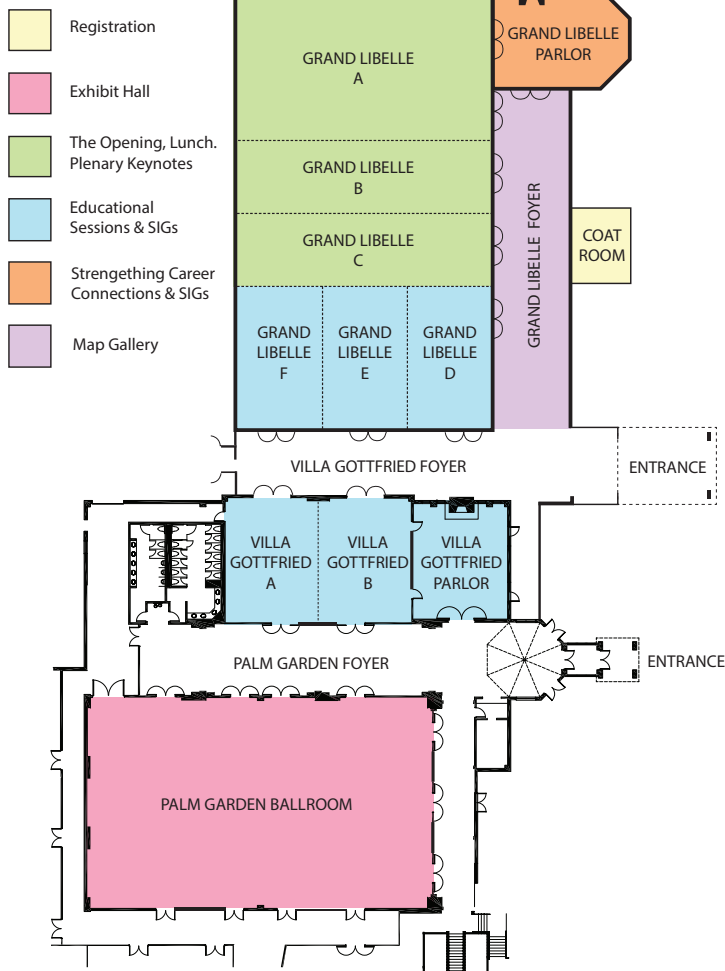


WI-FI NETWORK:

Osthoff Guest

2022 WLIA Conference Notes

Lined area for taking notes during the conference.



Mobile Sched



Twitter



#WLIA2022

Join us at the 2023 WLIA Annual Conference!

February 22-24, 2023

Kalahari Resort - Wisconsin Dells, WI

Pocket Program designed by Grace White



WISCONSIN
LAND INFORMATION
ASSOCIATION