



WISCONSIN
LAND INFORMATION
ASSOCIATION

36th Annual Conference

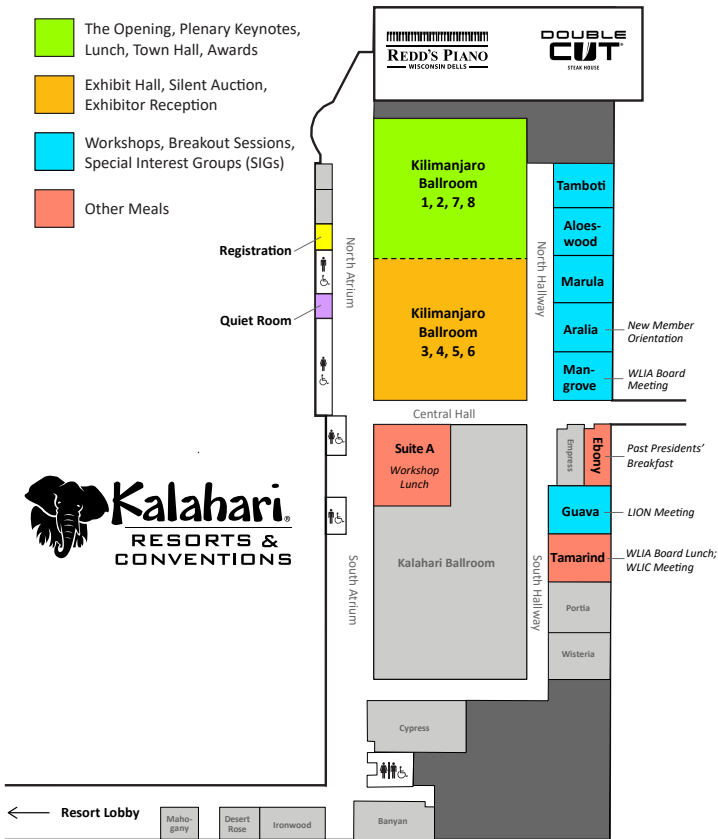
February 22-24, 2023

Kalahari Resort

Wisconsin Dells

Conference
Program

- The Opening, Plenary Keynotes, Lunch, Town Hall, Awards
- Exhibit Hall, Silent Auction, Exhibitor Reception
- Workshops, Breakout Sessions, Special Interest Groups (SIGs)
- Other Meals



Cover Graphics:

Design: Kim Meinert & Colter Sikora
 Photography of Devil's Lake: Joe Fleischmann

Floor Plan:

Grace White

WELCOME TO THE 36th ANNUAL WLIA CONFERENCE

..... February 22 – 24, 2023

Welcome to the 2023 WLIA Annual Conference! We are glad to be back at the Kalahari. The year has flown by quickly and we are excited to present a jam-packed schedule of 12 half-day workshops, 27 hours of breakout sessions, the Esri Hands on Learning Lab, networking, growth and fun in a safe and accessible atmosphere. We hope you enjoy some of the changes made this year to increase the quality and accessibility of the Annual Conference.

The increased revenue from fees allowed us to maintain (and in some cases increase) the quality of food items and have a better audio/visual experience. We were also able to recruit some speakers that ordinarily wouldn't attend. Alas, still no "break soda." We tried, but we realized we would not be good stewards of WLIA funds if we paid the exorbitant cost that venues charge.

We have many firsts this year as well. Make sure to check out the general information section of this program for details on the Hybrid Conference Experience, Quiet Room and Breakfast with the Exhibitors. We also have standing tables in the General Sessions for those who need to stand and stretch their legs.

Thank you all for joining us here and for participating in the Annual Conference. It is the members that make this organization what it is. We could not do this without our exhibitors and sponsors, the volunteer conference committee and you.

Sincerely,

Jennifer Borlick
2023 Annual Conference Chair



2023 KEYNOTE SPEAKERS

Kalahari Resort — Wisconsin Dells, WI



Dr. Marcus Lewis

Owner/Founder, Key Change Consulting

Dr. Marcus Lewis is the founder and owner of Key Change Consulting, LLC, an enrolled member of the Ho-Chunk Nation, African American, and a cisgender man. He has worked in diversity and equity for over ten years. As a nationally trained Seeking Educational Equity and Diversity (SEED) facilitator and education leader, Dr. Lewis has dedicated his career to working in higher education administration, Native American education, and inclusive advocacy. He has presented at the national, state, and local levels about educational equity, social justice, and Native American education.

Dr. Lewis holds advanced degrees in music and earned his education doctorate in 2018. He currently resides in the Fox Valley with his wife, Lindsey, and their two beautiful children.



Joseph Kerski, Ph.D, GISP

Geographer, Education Manager; Esri

Joseph Kerski is an enthusiastic geographer with a focus on the use of Geographic Information Systems (GIS) in education. He has served as the President of the National Council for Geographic Education and has given two TED Talks on “The Whys of Where.” He holds three degrees in geography (BA, MA, PhD) and has served as geographer in four sectors of society, including government (NOAA, US Census Bureau, USGS), academia (University of Minnesota, Harrisburg Area Community College, Penn State University, Sinte Gleska University, University of Denver, others), private industry (as Education Manager for Esri), and nonprofit organizations (with roles in geography and education associations). Joseph has authored over 75 chapters and articles on GIS, education, 40 podcasts, and related topics, and visits 35 universities annually. He conducts professional development for educators, creating over 5,200 videos, 750 lessons, 1,000 blog essays, and authored 8 books, including *Interpreting Our World*, *Spatial Thinking in Environmental Contexts*, *Essentials of the Environment*, *Spatial Mathematics*, *Tribal GIS*, *International Perspectives on Teaching and Learning*, and *the GIS Guide to Public Domain Data*. But as a lifelong learner, he feels as though he’s just getting started and thus actively seeks mentors, partners, and collaborators.

2023 KEYNOTE SPEAKERS

Kalahari Resort — Wisconsin Dells, WI



William "Naqwačekgize" Quackenbush

Ho-Chunk Deer Clan Member, Tribal Historical Preservation Officer, and Cultural Resources Division Manager

In 1999, William began working for the Ho-Chunk Nation, Heritage Preservation Department as a Land Specialist focusing on Realty, Land into Trust Applications and Cultural & Natural Resource Management. In 2004, the Cultural Resources Division requested for William to be transferred to their Division initially as a Researcher, then to become the Tribal Historic Preservation Officer (THPO) for the Ho-Chunk Nation, who was at that time creating a HCN THPO program to address tribal preservation needs. In 2008, William became the HCN HPD - Cultural Resources Division Manager. Some of his other professional responsibilities include Ground Penetrating Radar Operator (GPR) since 2002, Tribal Historian since 2006, and Ho-Chunk Nation Tribal Monitor since 2012.

As if that wasn't enough, he also has sat on several state and federal committees including the Kickapoo Valley Reserve Board, the Mississippi Valley Archaeological Center Board, the Wisconsin Inter-Tribal Repatriations Committee, the National Association of Tribal Historic Preservation Officers, the Fox/Wisconsin Heritage Parkway Board, the Sauk County FSA Committee, and the Inter-Tribal Bison Cooperative.

William receives preservation, environmental, and cultural guidance and advice from the Ho-Chunk Nation Heritage Preservation Board, which is comprised of one Executive Director and five Board members, expert advisors in their own field. Their mission statement is, "To protect and preserve the HooCak culture and heritage as living forces in the lives of the HooCak Wajic. To nurture our Nation's culture—to strengthen it as a living source of identity and pride for our people." He also receives guidance from the Ho-Chunk Nation Traditional Courts, comprised of Traditional Tribal Elder members representing each of the 12 Clans using Oral Traditional Guidance, and Caa Yaakikarac Leaders.

SCHEDULE OF EVENTS

Kalahari Resort — Wisconsin Dells, WI

WEDNESDAY, FEBRUARY 22, 2023

9:30 AM	Morning Workshops
12:30 PM	Lunch
1:30 PM	Afternoon Workshops
2:00 PM	WLIC
4:45 PM	LION Meeting
6:00 PM	The Opening

THURSDAY, FEBRUARY 23, 2023

7:00 AM	DEI SIG
8:00 AM	Breakfast with the Exhibitors
8:00 AM	New Member Session
8:00 AM	Quiet Room (Near registration)
8:30 AM	Morning Plenary with welcome by Paul Wolter, and Keynote Bill Quackenbush
10:05 AM	Exhibit Hall Opening, and Esri Hands on Learning Lab
10:30 AM	Morning Breakout Sessions
12:00 PM	Lunch, 50/50 Raffle, Hand-drawn map contest, Town Hall Part 1, Platinum Sponsor Spotlight, Keynote Dr. Marcus Lewis
2:00 PM	Afternoon Breakout Sessions
3:30 PM	Map Gallery Opening
4:00 PM	SIG Meetings
5:00 PM	Exhibitor Reception

FRIDAY, FEBRUARY 24, 2023

7:00 AM	Breakfast for the Past Presidents
8:00 AM	Breakfast with Exhibitors
8:00 AM	Quiet Room (Near registration)
8:30 AM	Morning Plenary, Gold Sponsor Highlight and Keynote Joseph Kerski
9:30 AM	Exhibit Hall Break/Silent Auction Closes at 10 am
10:30 AM	Morning Breakout Sessions
12:00 PM	Lunch, Town Hall Part 2, Awards, and Prizes
2:00 PM	New WLIA Board Meeting

2023 CONFERENCE HIGHLIGHTS

February 22 – 24, 2023 — Kalahari Resort — Wisconsin Dells, WI

WISCONSIN LAND INFORMATION ASSOCIATION

WLIA is a grassroots organization representing a collection of concerned professionals working to develop, maintain, and apply a network of statewide land information systems. WLIA members include staff and elected officials from all levels of government, academics, consultants, and other private sector users of geographic information systems. Members are united by an interest in land records modernization, GIS and related technologies, and by the need for government policies and programs that support their efficient and effective application.

ABOUT THE CONFERENCE

The WLIA Annual Conference is in its 36th year! It is the premier GIS conference in Wisconsin, with emphasis on local, regional, and statewide trends, issues, and applications. This three-day conference is packed with hands-on workshops, technical demonstrations, educational presentations, and more. This is the ideal opportunity to meet other GIS professionals and interact, learn, and network.

SILENT AUCTION

Viewing of silent auction items will begin on Thursday morning at 10:00 AM in the Exhibit Hall and continue until 10:30 AM on Friday. For those who want to bid early, or who cannot make it to the in-person event, online bidding will open at 10:00 AM on Monday before the conference. (All bids, both online and in-person, will have to be conducted using the Charity Auctions Online site. We do not accept cash at the event.) Have fun bidding on items such as sports tickets, gift packs, hotel stays and much more! The auction raises money for the Damon Anderson Memorial Scholarship program via the WLIA Foundation, Inc., and all donations are tax deductible. Please help us to fund the education of those who follow in our footsteps. Remember, it's for the kids!

2023 CONFERENCE HIGHLIGHTS

February 22 – 24, 2023 — Kalahari Resort — Wisconsin Dells, WI

PLENARIES WITH KEYNOTE SPEAKERS

We welcome our keynote speakers: Dr. Marcus Lewis, Owner and Founder of Key Change Consulting, LLC; William (Bill) “Naaᵠaᵠecekᵠize” Quackenbush, Ho-Chunk Nation Preservation Representative; and Joseph Kerski, Esri Education Manager to our Annual Conference!

EXHIBIT HALL

The Exhibit Hall is a great place to meet our sponsors and other exhibitors, with the latest in technology and services on display. Exhibit Hall hours will be:

Thursday, February 23rd

- 8:00 – 8:30 AM (HOT!) Breakfast with the Exhibitors (NEW)
- 10:00 AM – 12:00 PM and 1:30 – 7:00 PM (Exhibitor Reception 5:00 PM – 7:00 PM)

Friday, February 24th

- 8:00 – 8:30 AM (HOT!) Breakfast with the Exhibitors (NEW)
- 9:30 AM – 10:30 AM

As usual, the Exhibit Hall will be closed during plenary sessions so our exhibitors and sponsors can join us for the plenaries. This year the Hall is adjacent to the General Session area. We will be dimming the lights in the Exhibit Hall as a cue to those within that the plenaries have begun.

PRE-CONFERENCE WORKSHOPS

The 2023 workshops will be held on Wednesday, February 22. There are 11 different workshops: six morning workshops from 9:30 AM – 12:30 PM, and five afternoon workshops from 1:30 PM – 4:30 PM. Member rate: \$85 per session; Non-member rate: \$105 per session. Lunch is included at no extra charge if you register for two half-day paid workshops.

2023 CONFERENCE HIGHLIGHTS

February 22 - 24, 2023 — Kalahari Resort — Wisconsin Dells, WI

THE OPENING

The 2023 WLIA Annual Conference will commence on Wednesday evening, February 23, at 6:00 PM with “The Opening.” This year we will be holding a live trivia contest hosted by Andy Bartell and Jeremy Erickson. There will also be a plethora of other games, cards, puzzles, giveaways and food. This will be your first big opportunity to network at the conference. Get to know fellow WLIA members and reconnect with old friends.

AWARDS

Many of your colleagues and WLIA members commit countless hours going above and beyond expectations to further GIS and land records modernization in Wisconsin. On Thursday and Friday, WLIA will recognize many of these individuals and their achievements, as well as announce the winners of the Scholarship Awards, Map Contest, and Best Presentation Award.

SPECIAL INTEREST GROUPS

Do you have a special interest related to GIS and Land Information? Special Interest Group (SIG) meetings will take place on Thursday afternoon from 4:00 PM - 5:00 PM. Check out some of the SIGs available through WLIA and start connecting: NextGen 911; Wisconsin LiDAR Data (LiDAR), Unmanned Aerial Systems (UAS); Municipal and Utilities (MUGG), GIS Developers, and Small Business. WLIA features special interest groups as a resource for members. Diversity, Equity and Inclusion will meet Thursday morning at 7:00 AM.

2023 CONFERENCE HIGHLIGHTS

February 22 - 24, 2023 — Kalahari Resort — Wisconsin Dells, WI

2ND ANNUAL WLIA CAREER CONNECTIONS

Preparing for that upcoming interview? Wish you could do a dry run? Need tips on interviewing? Just starting the process and want a resume reviewed before sending it out? Do you have general career questions? On Thursday, February 23, stop by the 2nd Annual WLIA Career Connections for free career advice. Speak with potential future employers and professionals, have your resume reviewed, and try your hand at a mock interview with professionals from across the potential career spectrum. Open to all attendees.

JOB BOARD

Post your job opening or look for a new opportunity. The job board will be located near the registration area. Last year this was used in collaboration with Career Connections for actual job interviews. If you are an employer looking to hire, make sure to look for David Buehler (david.buehler@ci.marshfield.wi.us) to reserve space.

TOWN HALL MEETING

The annual WLIA Town Hall meeting will be conducted on Thursday and Friday during lunch, along with the 50/50 raffle benefiting the Damon Anderson Memorial Scholarship fund. The meeting will contain the annual report, which includes the President's Report, Committee Reports, Secretary's Report, and Treasurer's Reports. The meeting will also afford the opportunity to discuss activities of the Association and WLIA's future direction.

2023 CONFERENCE HIGHLIGHTS

February 22 – 24, 2023 — Kalahari Resort — Wisconsin Dells, WI

NEW MEMBER MEETING

First time conference attendees, and anyone looking to learn more about WLIA or the conference, are invited to this brief session Thursday at 8:00 AM. Seasoned WLIA veterans will share their tips on how to get the most out of the conference experience, as well as explain the various roles WLIA serves in the land information community.

LION MEETING

The annual Land Information Officer Network (LION) meeting will be held within the WLIA Conference. The meeting will take place on Wednesday, February 22 at 4:45 PM.

WLIC

The Wisconsin Land Information Council (WLIC) will meet on Wednesday, February 22 at 2:00 PM.

MAP GALLERY

Join us in the Convention Lobby on Thursday, February 23 at 3:30 PM for the Map Gallery Opening! Peruse the gallery at your leisure throughout the conference to choose your favorite and get inspiration. Map Contest Awards will be announced during lunch on Friday.

HAND-DRAWN MAP

Participate in this year's hand-drawn map contest during Thursday's lunch. Map entry forms and pencils will be available at your table for you to doodle a map based on a theme announced at lunch. Ribbons and recognition will be awarded for the best maps during the map contest awards on Friday.

2023 CONFERENCE HIGHLIGHTS

February 22 – 24, 2023 — Kalahari Resort — Wisconsin Dells, WI

2023 MAP CONTEST

Don't forget to submit your vote for People's Choice by Friday, February 24 at 11 AM!

- **Base / Reference Map:** Very useful, complete, and documented map sporting good design, layout, labeling, and annotation to feature your data.
- **Thematic Map:** Features prominent, yet appropriate, use of cartographic techniques to share a message (e.g.: Choropleth, Prop Symbol, Dot Density, etc.).
- **Mapping Poster:** Informative and interesting presentation that highlights innovative geospatial projects or processes.
- **Black & White Map:** Any format and theme, but no hue . . . a special design challenge!
- **Brochure / Small Format Map:** Must be ANSI B (11" x 17") or smaller; any theme, scale, or extent.
- **Map Book or Atlas:** Must be a bound and easy-to-use map series of any theme.
- **Most Unique:** Unconventional, creative presentation, unique subject and/or materials.
- **Interactive Map:** Website or application designed to share geospatial knowledge.
- **Story Map:** Website or application designed to share a geospatially focused narrative with users.

Special Awards:

- President's Choice
- People's Choice
- Best Student Map
- Best Private Sector Map
- Best Public Sector Map

2023 CONFERENCE HIGHLIGHTS

February 22 – 24, 2023 — Kalahari Resort — Wisconsin Dells, WI

ESRI HANDS ON LEARNING LAB (HOLL)

The Esri Hands on Learning Lab is back this year! The HOLL is located in the Exhibit Hall on Thursday ONLY. Make sure to stop by for a quick 45-minute self-paced lessons to advance your Esri software skill set.

RED LANYARDS

If you do not wish to have your photo taken by WLIA, exhibitors or attendees please be sure to pick up a red lanyard at the registration desk. If you see someone wearing a red lanyard, please don't take their picture.

QUIET ROOM (NEW THIS YEAR!)

Feeling overwhelmed and not checked into a room? Need to get away to a dimly lit, quiet spot for a few minutes and don't want to walk all the way to your room? We will have a quiet room set up next to registration for you to stop, re-group and catch your breath. Hours are Thursday, 8:00 AM – 3:30 and Friday 8:30 AM – 2:00 PM.

HYBRID TRACK (NEW THIS YEAR!)

All sessions in the Mangrove Room will also be streamed to virtual attendees. Some of the tracks will also be recorded for in person and virtual attendees to be viewed later.

POLICIES

WLIA CODE OF CONDUCT

(Anti-Harassment Policy) Adopted 10-30-2015

We expect participants, presenters, and exhibitors to follow these rules at the annual conference, regional meetings, and related social events, workshops, online forums, in social media, and any other activity sponsored by the Wisconsin Land Information Association (WLIA).

WLIA is dedicated to providing a harassment-free experience for everyone. We do not tolerate harassment of community members or event participants in any form. Sexual language and imagery is not appropriate for any WLIA event. Participants violating these rules may be sanctioned and/or expelled from the event without a refund at the discretion of the event organizers.

Harassment includes offensive verbal comments related to gender, gender identity and expression, sexual orientation, disability, group status, physical appearance, body size, race, religion, sexual images in public spaces, deliberate intimidation, stalking, following, unwelcome photography or recording, sustained disruption of talks or other events, inappropriate physical contact, and unwelcome sexual attention. Participants asked to stop any harassing behavior are expected to comply immediately.

Presenters and exhibitors are also subject to the anti-harassment policy. In particular, presenters and exhibitors should not use sexualized images, activities, or other material, or otherwise create a sexualized environment. If a participant engages in harassing behavior, the meeting organizers may take any action they deem appropriate, including warning the offender or expulsion from the conference with no refund.

If you are being harassed, notice that someone else is being harassed, or have any other concerns, please contact a member of WLIA Board of Directors, email admin@wlia.org, or stop by the registration desk immediately. The WLIA President, President-Elect, and Past President

POLICIES

will communicate promptly with anyone who reports an issue while working quickly to address the problem in a confidential manner.

If you have any questions about this policy, please email admin@wlia.org, talk to a member of the Board of Directors, or just stop by the registration desk. All reports will be treated in a confidential manner.

DUTY OF CARE

WLIA is preparing our meeting experience so that all individuals on-site, attendees, speakers, staff, and venue personnel remain safe, healthy, and comfortable throughout the event. The health and safety of our members is our top priority.

We are monitoring the COVID-19 status and are in communication with the team at the event location. Please visit the Centers for Disease Control and Prevention for recommendations on how to protect yourself against COVID-19. You can also see the current health and safety protocols that event location has in place.

Before Leaving Home

Follow relevant guidance provided by the Centers for Disease Control and Prevention (CDC) and your local health authority.

Evaluate your own health and that of people you are in close contact with; contact the meeting/event organizers if you have concerns.

Stay home if you are experiencing any of these symptoms: temperature over 100.4F, loss of taste or smell, cough, runny nose, sore throat, muscle aches, headache.

On-Site During the Event

Follow guidance for everyday preventive actions to help prevent the spread of respiratory viruses including:

- Washing hands often with soap and water for at least 20 seconds, or an alcohol-based sanitizer with at least 60% alcohol.

POLICIES

- Avoiding touching eyes, nose, and mouth with unwashed hands.
- Covering your nose and mouth when coughing or sneezing. Throw used tissues in the trash.
- Cleaning and disinfecting frequently touched objects and surfaces using a regular household cleaning spray or wipe.
- Agree to follow local and venue mask requirements at the event. If masks are required, you are encouraged to bring your own masks; however, WLIA will have a supply of masks available on-site.
- Adhere to social distance protocols put in place by WLIA and respect others' personal space.
- Meeting sessions will be set for appropriate social distancing. Rearranging of seating is prohibited.
- Hand sanitizer stations will be positioned throughout the hotel and our meeting space.

Other Notes

- Appropriate signage will be displayed to reinforce social distancing and other safety reminders.
- WLIA staff and Board members will work with the venue to ensure adherence to safety protocols at the meeting as outlined.
- Notify WLIA staff immediately if you feel unwell or are experiencing flu-like symptoms.
- Should you exhibit COVID-19 symptoms or test positive over the meeting dates, you will not be allowed to attend the meeting. Any additional expenses you may incur to quarantine or return home will be your responsibility.

Post-Event

If you test positive for COVID-19 up to 14 days after returning home, please contact WLIA staff to advise them of your situation.

For any questions or concerns, feel free to reach out to Ann Barrett, Executive Services Manager.

POLICIES

PHOTO POLICY

By registering for any Wisconsin Land Information Association (WLIA) event your entry and presence constitutes your consent to be photographed, filmed and/or otherwise recorded. Your likeness may be used by WLIA, exhibitors, sponsors, and fellow attendees on websites, at future events, for marketing and promotional materials, on social media, and for other uses not yet defined. You understand that all photography, filming and/or recording will be done according to this consent.

WLIA would like to create an inclusive and safe environment. If you do not consent to the above, please wear a red lanyard that will be provided by WLIA at registration as a visual cue to those taking photographs and recordings to not include you. If you are taking photographs and recordings at an event, you understand that you should not include people wearing a red lanyard. When wearing a red lanyard, the possibility exists that you may appear in a photograph taken at a WLIA event. In such cases, WLIA will endeavor to follow this policy as written and remind our exhibitors, sponsors, and fellow attendees to refrain from using such photos for promotional purposes.



Platinum Sponsor of WLIA since 2004

GEOSPATIAL SERVICES

EXPERTISE

- Aerial imagery
- Photogrammetry
- Aerial & mobile lidar
- HD laser scanning
- GIS consulting
- Hydrographic survey
- Unmanned aerial systems
- Boundary survey
- Construction staking
- Right-of-way plats
- Ground & geodetic control
- Subsurface utility engineering

SPECIALIZED APPLICATIONS

- Land information
- Transportation design
- Municipal engineering
- Forestry & agriculture
- Floodplain mapping
- Utility mapping
- Telecom & broadband
- Erosion & drainage analysis
- Elevation-derived hydrography
- Asset mapping

Ready for the next step? Contact Ayres today.

Ingenuity, Integrity, and Intelligence.

800.666.3103 | www.AyresAssociates.com

AYRES
GEOSPATIAL

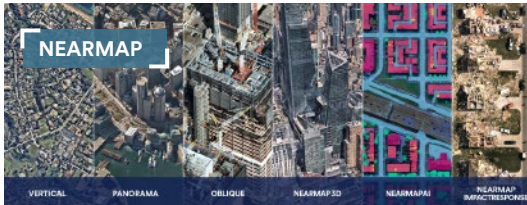


2023 WLIA SCHEDULE

WEDNESDAY, FEBRUARY 22ND

8:00 AM – 6:00 PM

Registration Desk Open



Every day, Nearmap helps thousands of users conduct virtual site visits for deep, data-driven insights—enabling informed decisions, streamlined operations and better financial performance.



ABOUT NEARMAP

Nearmap provides easy access to high-resolution aerial imagery, city-scale 3D and AI data sets, and geospatial tools.

Nearmap is a pioneering technology and innovation company whose cloud-based geospatial information services and aerial surveys provide certainty to an ever-changing world. Nearmap proactively captures over 80 percent of the U.S. population up to three times each year and offers easy access to high-resolution aerial imagery, including:

- Vertical / ortho, oblique, panorama, 3D, AI
- Current and historical images
- On-demand, city-scale 3D datasets
- Location intelligence with Nearmap AI

WEDNESDAY
2 - 22

	Tamboti	Aloeswood	Marula
9:30 AM	1. Learn ArcGIS Insights: Drag-and-Drop Spatial Data Science for Everyone	2. UAV in Local Government	3. Legal Issues in GIS

Workshop 1: Learn ArcGIS Insights: Drag-and-Drop Spatial Data Science for Everyone

Tamboti

Ian Muehlenhaus, Esri

ArcGIS Insights is different. ArcGIS Insights combines the power of both data science and GIS into a single, cloud-based package that runs on both Windows and Mac. It has virtually no drop-down menus—allowing you to focus on exploring, analyzing, and visualizing your datasets without distraction. Most importantly: ArcGIS Insights is fun to use!

Workshop 2: UAV in Local Government

Aloeswood

Scott M. Galetka, Bayfield County

The workshop will cover a wide range of UAS missions that support Land Records, Engineering, Highway, Sheriff's Office, Conservation, Tourism, and Forestry/Parks departments. The workshop will dive into the data management side, managing large datasets, and how the drone program functions in a government organization. Each project is designed to fit unique requests; there will be a focus on the ongoing collaboration between the Bayfield County Sheriff's Office and Land Records. We will be looking at a typical UAS project and the setup. There will also be a live demo of the search and rescue software (Loc8). Bring your questions and be ready for helpful tips and tricks for getting any drone program off the ground. Join in on this interactive workshop and learn from an experienced UAS pilot!

Aralia	Mangrove	Guava
4. Tips & Tricks - Editing in ArcGIS and the Parcel Fabric	5. Introducing SQLite for Spatial Data: The New "Personal Geodatabase"	6. ArcGIS Solutions: Address Data Management for 911

Workshop 3: Legal Issues in GIS

Marula

Chris Dunn, GeoVelo Geospatial Forensics

Hour 1: Geospatial Case Law: With a special focus on YOUR personal legal liability, copyrights, contracts, open records, and more.

Hour 2: The Many Ways Geospatial People End Up in Court: 1) Making embarrassing mistakes; 2) You are the GeoExpert; 3) You made the geospatial demonstratives for court; and over twelve more ways.

Hour 3: Geofence Warrants (An emerging legal issue): Geofence warrants have proven to be an effective tool to help prosecutors and police make their case, often when no other evidence leads to a suspect. They are the latest intersection between the geospatial profession and law enforcement. In some jurisdictions prosecutors petition judges to authorize warrants which scrutinize one or more national location databases, containing location records of every citizen in the US with a smartphone. Many legal scholars say it's the details of how those data are obtained from the warrant, selected, processed, and then presented in court which may, or may not, offend long-established Constitutional protections found under the 4th and 5th Amendments. We'll avoid politics in this session and focus on how a Geofence Warrant might affect you professionally.

Q&A: I love questions and you can ask them at any time during our session. So, please bring your questions to the conference or email them ahead of time to Chris.Dunn@GeoVelo.com

Workshop 4: Tips & Tricks—Editing in ArcGIS and the Parcel Fabric

Aralia

Frank Conkling, Panda Consulting

The transition to ArcGIS Pro and the Parcel Fabric opens many options to enhance the editing experience, especially for parcels and land records. This workshop will examine some of these options and provide valuable tips and tricks to help you work faster and more efficiently in ArcGIS Pro with your land records.

Workshop 5: Introducing SQLite for Spatial Data: The New “Personal Geodatabase”

Mangrove

Aaron Fisch (Ruesch), Wisconsin Department of Natural Resources

SQLite is arguably the most influential technology for app development on smartphones, making it one of the most influential information technologies today, period. But its influence is not confined to app development on smartphones. In the GIS world, SQLite fills the important role that previously belonged to ESRI’s now deprecated Microsoft Access-based “personal geodatabase” (and a lot more!). SQLite is a FOSS (free and open source), portable, embeddable, lightweight relational database management system that can be enabled for the storage and processing of spatial data. This workshop will introduce how and why SQLite is used for spatial data (for example, fulfilling the relational aspect of data storage that File Geodatabases were not designed for), and provide an interactive introductory experience creating a spatially enabled SQLite database with sample tables and SQL queries.

Workshop 6: ArcGIS Solutions: Address Data Management for 911

Guava

Phillip Julian, Solution Engineer, Esri

This session will provide an overview of a set of data management solutions that help local and state governments manage authoritative address repositories.

12:30 PM – 1:30 PM

Board and Nominee Lunch

Room: Tamarind

Lunch

Room: Suite A

WEDNESDAY
2 – 22

ALL EYES ARE ON YOU TO DELIVER SMART COMMUNITIES.

WHAT WILL YOU DO?

Smart communities are not something that is off in the distant future. They're happening now. Thousands of jurisdictions are applying ArcGIS technology for planning and engineering, operational efficiency, data-driven performance, and civic inclusion.

Start your own smart community journey.

go.esri.com/eyes-on-smart

 **esri** | THE SCIENCE OF WHERE™

	Tamboti	Aloeswood
1:30 PM	7. Data Visualization and Storytelling Essentials	8. Field Collection Tools and Methods

Workshop 7: Data Visualization and Storytelling Essentials

Tamboti

Jami Dennis, Geodetic Analysis, LLC

Communicating with data is a key aspect of GIS. In this workshop you will learn best practices for presenting your data visually and telling stories that bring your data to life. Attend this session to discover why data visualization is an important communication tool, how to create great data visualizations, and how to effectively communicate with storytelling techniques. Things you'll learn by attending this workshop:

- Tips for building better charts in Excel
- How to think like a graphic designer
- Cartographic techniques to improve your maps
- Keys to storytelling with data and maps
- Designing for the medium (map, poster, PowerPoint, dashboard, StoryMap)
- Tips on presenting your work in an online portfolio

Workshop 8: Field Collection Tools and Methods

Aloeswood

David Buehler, City of Marshfield

Tyler DeBruin, Town of Grand Chute

In this workshop we will examine and build practical field data collection systems using a variety of ESRI field collection apps, notably Survey123 and Field Maps. We will also use additional applications and dataset that help automate and enrich these programs, such as living atlas and Integromat. We will explore their strengths and weaknesses, how they function with high accuracy GPS units, how to automate tasks, and

Marula	Aralia	Guava
9. Parcel Fabric Editor's Workshop	10. A Surveyor's Take on Mapping Legal Descriptions	12. ArcGIS Online: Choosing the Right Web App

how each app integrates with each other to build amazing complete end to end workflows that will support your organization's collection needs. This workshop will be tailored to you to the best of our abilities, so please provide examples of workflows you would like to collect in the field to the instructors ahead of time. This way you can walk away with something in hand. This is a hands-on workshop, so you need a few things to fully participate. You will need a laptop, Survey123 Connect installed, and a mobile device that has Field Maps and Survey123 installed is preferred. Please bring any high accuracy GPS units you would like to use with ESRI products, so we can help set yours up for use after the workshop.

Workshop 9: Parcel Fabric Editor's Workshop

Marula

Ruth Workman, Pro-West & Associates

Get up to speed on the Parcel Fabric, fast! Join this workshop to learn the most important practical tips and tricks for editors as well as exploration of the most up-to-date tools and capabilities available for fabric users. Content will reflect Esri's most recent software releases relevant to the Parcel Fabric in ArcGIS Pro. This workshop is a must for editors who have limited time to spend learning new functionalities and techniques while focusing on the daily responsibilities of keeping parcel data up-to-date.

Workshop 10: A Surveyor's Take on Mapping Legal Descriptions

Aralia

Frank Conkling, Panda Consulting

This presentation shall examine the way in which a surveyor reads and interprets a legal description and compares it to how most mappers interpret legal descriptions. Discussion shall include: priority of monuments, conflicts, simultaneous versus sequential conveyances, and junior and senior rights.

Workshop 12: ArcGIS Online: Choosing the Right Web App

Guava

Gustavo Castro, Esri

Learn how to choose the right app building tools for your goals. View a real-world example that uses ArcGIS Dashboards, ArcGIS Instant Apps, ArcGIS Experience Builder, and ArcGIS Story Maps.

2:00 PM – 4:00 PM

WLIC

Room: Tamarind

4:45 PM – 5:45 PM

LION

Room: Guava

6:00 PM – 9:00 PM

The Opening

General Session Room: Kilimanjaro 1, 2, 7, 8

Join us for dinner, trivia, games and networking fun! The Opening is included with conference registration. A cash bar will also be available.

2023 WLIA SCHEDULE

THURSDAY, FEBRUARY 23RD

7:00 AM

DEI SIG

Room: Marula

7:30 AM – 6:00 PM

Registration Desk Open

8:00 AM

Breakfast with the Exhibitors (Breakfast is located in the Exhibit Hall)

Exhibit Hall and General Session Room: Kilimanjaro 1-8

New Member Orientation

Room: Aralia

8:00 AM – 3:30 PM

Quiet Room Open (Near Registration)

8:30 AM – 10:05 AM

Morning Plenary featuring welcome by Paul Wolter and Keynote Speaker Bill Quackenbush

General Session Room: Kilimanjaro 1, 2, 7, 8

10:05 AM – 12:00 PM

Esri Hands-on Learning Lab

Exhibit Hall: Kilimanjaro 3-8

THURSDAY
2 – 23

Breakout Sessions 10:30 AM – 12:00 PM

	Tamboti	Aloeswood	Marula
	The Future of GIS	Tribal	Enterprise
10:30 AM	We Need to talk about your GIS Data	Surveying the Past: Land Surveys, Archaeology, and Burial Sites	Asset ID Best Practices
			Branch Versioning in a Multi-Agency Environment
11:30 AM	The Role of SLAM Technology for Reality Capture & the Metaverse	Menominee Place Names	SQL Enterprise Geodatabase Tips & Tricks

THURSDAY
2 - 23

The Future of GIS

Room: Tamboti

We Need to Talk—About your GIS Data: A WSR2022 Task Force Panel Discussion About the New Datums (60 min)

Beginner

Nina Rihn, GIS Data Administrator, WI Dept of Natural Resources

Michael Dennis, Geodesist, NOAA's National Geodetic Survey

Howard Veregin, State Cartographer, State Cartographer's Office

Jeremy Erickson, Monroe County Land Information Officer

Corey Hughes, St. Croix County Surveyor

Richard Kleinmann, Ayres Associates

Moderator: Eric Damkot, Washington County Director of GIS/LIO

We seriously need to talk—about your GIS data. In 2025 the National Geodetic Survey (NGS) will replace NAD 83 with the North American Terrestrial Reference Frame of 2022 (NATRF2022) and NAVD 88 with the North American-Pacific Geopotential Datum of 2022 (NAPGD2022).

Aralia	Mangrove	Guava
Addressing	Hybrid	Student and Career
Addressing for Everyone	ArcGIS Arcade Fundamentals	GIS College Curriculum from a Student's Perspective
		Mapping Your Future with GIS
Common 9-1-1 Data Errors and How to Correct (and Prevent!) Them	Improving the Accessibility of your Web Maps	Getting Certified: Becoming a GISP

These changes will have significant impact on surveying, mapping, and GIS across Wisconsin. This panel will include members of the Wisconsin Spatial Reference System 2022 Task Force (WSRS2022) and Michael Dennis (Geodesist at NGS), and will discuss issues like “What is wrong with your data?”, “What will be wrong with your data in 2025?”, “What should you do now?”, “What should you do in 2025?”, and “What is being done to give you the tools to do what you need to do?”. There will be some time for an introduction of the panel members and an overview of how these datum changes will affect you and your data, as well as abundant time for an open conversation that may answer some questions or even uncover new considerations.

The Role of SLAM Technology for Reality Capture and the Metaverse (30 min)

Advanced

Richard Wohler, Business Development, GPI Geospatial, Inc.

Geospatial data is taking a lead role in the development of the eventual metaverse. Highly detailed 3D datasets along with GIS will serve as the backbone of whatever the metaverse will become as the concept continues to evolve and take shape. Simultaneous Localization and Mapping (SLAM) systems simplify data collection and significantly increases the speed by which 3D datasets can be developed. SLAM technology utilizes both lidar and cameras for mapping both indoor and outdoor locations. This emerging approach to reality capture is making it possible to efficiently map robust 3D environments in ways that have been cost-prohibitive in the past. The goal of this presentation is to introduce the fundamentals of SLAM systems and provide a representative sample of real-life use cases.

Tribal

Room: Aloeswood

Surveying the Past: Land Surveys, Archaeology, and Burial Sites (60 min)

Intermediate

Amy L. Rosebrough, Staff Archaeologist, Wisconsin Historical Society

Wisconsin's mapmakers have played an important role in the documentation and preservation of Wisconsin's human landscape. From ancient burial mounds to lead mines, settlement-era lumber piers to thousand-year-old roads, early mapmakers preserved sites on paper before they faded into history. Come hear an overview of Wisconsin's deep history, how stories are rebuilt and retold using archival maps, and how you can work with Wisconsin's preservation laws to preserve the past for future generations.

THURSDAY
2 - 23

Menominee Place Names (30 min)

Intermediate

Joe Martell, GIS Coordinator, Shawano County

Howard Veregin, State Cartographer, State Cartographer's Office

The Menominee Clans Story at UWSP was conceived as one avenue to assist in the preservation of traditional Menominee culture. Numerous projects associated with the installation and website sprang from the original efforts to preserve some of the oral history, language, and culture of Menominee people. One of these projects began with extensive paper maps attempting to document some of the traditionally known locations using the most culturally accurate spelling and resources available.

As the paper map was underway other techniques for sharing these place names were investigated. Some of those included potential options to share the placenames in the Menominee language online. A list of some of the place names as well as an ability to click on them and hear them spoken in the traditional Menominee was compiled. Once the final new paper map was completed it was decided to make it interactive and publicly accessible as a language teaching tool with a series of triple-vetted traditional names and locations made available.

The goal of this work is to continue to present traditional knowledge with some modern geographical practices. Technical details change frequently, the place names and knowledge do not. As the interactive map was done in Flash, an updated platform was required using newer software. The processes involved developing the paper map, the interactive map, and the collaboration between Cartography and Indigenous people will be explored in the presentation.

Asset ID Best Practices

Beginner

Andy Bartell, Project Manager/GIS Specialist, ITpipes

Proper identification of physical and digital assets is an imperative asset management component. In local and municipal organizations, one essential asset type that requires appropriate asset identifiers is buried sewer infrastructure. Knowing where an asset is located, the condition of that asset, and how to uniquely identify that asset is critical to properly managing the infrastructure component.

Using a Geographic Information System (GIS) to manage physical infrastructure assets is a popular and well-established method for asset management. Using a GIS like Esri's products is a common and standard way to manage asset IDs for physical assets and infrastructure.

This presentation will discuss best practices for designing, creating, and managing asset IDs using Esri GIS.

Branch Versioning in a Multi-Agency Environment

Intermediate

Kim Meinert, LIS Analyst, Waukesha County
Chris Dickerson, LIS Analyst, Waukesha County
Brad Blumer, GIS Coordinator, City of Waukesha
Megan Roessler, GIS Analyst, City of Waukesha

In 2022, Waukesha County and three of its municipal partners began production in the ArcPro Parcel Fabric using branch versioning, each municipality editing their own area within the County's database to achieve one seamless dataset. We'll talk just a little bit about our Parcel Fabric conversion, but mostly come to learn about our journey as we discuss licensing, accommodating local workflows, database administration, and most importantly, building trust. Kim Meinert and Chris Dickerson of Waukesha County will be joined by the GIS staff of one of those municipalities—Brad Blumer and Megan Roessler of the City of Waukesha—so that you're sure to get both sides of the story.

SQL Enterprise Geodatabase Tips & Tricks (30 min)

Intermediate

Scott Daniel, GIS Developer/ Specialist, GRAEF USA

We'll peek under the hood of SQL Spatial databases and show you how you can easily update attribute domains, field order and field type. We'll also explore the advantages of views for calculated values, dynamic labels, and layers.

Addressing

Room: Aralia

Addressing for Everyone (60 min)

Intermediate

Jeff Ledbetter, Public Safety GIS Expert, DATAMARK, Michael Baker Intl.

Addressing, and more specifically, documenting and managing addresses in a GIS environment, is more an art than science. This workshop will inform participants of the many considerations that need to be undertaken when establishing and maintaining GIS-based address databases and applications.

Common 9-1-1 Data Errors and How to Correct (and Prevent) Them (30 min)

Intermediate

Erin Strickler, Director of Services, Cloudpoint Geospatial

GIS Address data is typically created with efficiency in mind rather than precision. There are many potential data sources to enhance address accuracy. This webinar will review common inaccuracies in GIS addressing data, strategies to improve data accuracy, as well as ways to prevent these errors from happening again (hint: Attribute Rules).

THURSDAY
2 - 23

ArcGIS Arcade Fundamentals (60 min)*Intermediate*

Phillip Julian, Solution Engineer Team Lead, Esri

ArcGIS Arcade is a way to write expressions in ArcGIS. With Arcade, you can manipulate the information in your map and create new attributes on the fly. These new attributes can be used to create custom labels, symbolizations, and pop-up windows. Arcade is used throughout ArcGIS, with expressions used interchangeably in different applications and different devices.

Improving the Accessibility of Your Web Maps (30 min)*Beginner*

Hayden Elza, GIS Developer, Wisconsin State Cartographer's Office

Inaccessible web content means those with disabilities are denied equal access to information. Web content that is inaccessible is just as much of a barrier as steps at the entrance of a building. In this talk I will cover what web accessibility means, how to assess your own sites, and what strategies can be used to improve the accessibility of your web maps. I will use ArcGIS Online as a test case, but the core concepts are the same no matter what technology you use, even for your non-mapping web content.

GIS College Curriculum from a Student's Perspective (30 min)*Intermediate*

Eli Norlander, Student, University of Wisconsin-Milwaukee

Hear from a student and intern about the curriculum that is being taught at one of the nation's premier GIS institutions. This presentation will combine experiences from lecture and labs with some project examples. Working a GIS internship helped me to pick up on the lecture materials far better than I would have without the hands-on GIS experience.

Mapping Your Future with GIS

Beginner

Joseph J. Kerski, PhD GISP, Education Manager, Esri

What skills, perspectives, and networks will be critical during the remainder of the 2020s and beyond? Join geographer, educator, and GIS professional Joseph Kerski in this lively session as we empower you with the directions that geotechnologies are heading and empower you to take practical steps as you journey forward. These include crafting your professional portfolio, personal and GIS skills to cultivate, organizations to connect with, and more.

Getting Certified: Becoming a GISP (30 min)

Beginner

Jami Dennis, Geospatial Consultant, Geodetic Analysis, LLC

This presentation will provide an overview of the GIS Certification Institute and the process of becoming a certified GIS Professional (GISP). It will cover what it means to be a GISP, how to prepare for the exam, and how to complete the GISP portfolio.

12:00 PM – 1:45 PM

**Lunch and Afternoon Plenary featuring Keynote Speaker
Dr. Marcus Lewis**

Town Hall (Part 1)

50/50 Raffle for Damon Anderson Memorial Scholarship

Hand-Drawn Map Contest

General Session Room: Kilimanjaro 1, 2, 7, 8

1:30 PM – 5:00 PM

Esri Hands-on Learning Lab

Exhibit Hall: Kilimanjaro 3-8

THURSDAY
2 – 23

Breakout Sessions 2:00 PM – 3:30 PM

	Tamboti	Aloeswood	Marula
	LiDAR	Parcel Fabric	ArcGIS
2:00 PM	Congratulations you have LiDAR—Now What?	Building a Better Parcel Fabric through attribute rules	ArcGIS Insights: Explore and Report Your Data Visually
2:30 PM	Deriving Hydrography from LiDAR		
3:00 PM	Evaluating Suitability of Projects for UAS LiDAR	The Path to Pro: Easing the Transition for Parcel Fabric Users	Pro Perspectives: ArcGIS Pro 3.0

THURSDAY
2 - 23

LIDAR

Room: Tamboti

Congratulations you have LiDAR—Now What? (30 min)

Intermediate

Adam Derringer, Senior Project Manager, Ayres Associates

Your county has lidar. Lidar is a key foundation dataset that can help inform decisions of land managers, but it often goes unused. Whether you need to locate exactly where your culverts are, create and enhanced hydrography dataset to map water flow, find closed depressions for water quality studies, or you need to assess the risk of erosion, analysis of LiDAR can put your data to work to help derive answers for departments across your organization. We will talk briefly about lidar specifications in the state and then look at some solutions you can produce so you can start planning for your projects today.

Aralia	Mangrove	Guava
Story Maps and Communication	Hybrid	Student and Career
Practical Ways to Communicate The Value Of Your Work	Developing Guidelines to Resolve Addressing Conflicts	2 nd Annual WLIA Career Connections
Harnessing the Power of Storytelling with StoryMaps		
Tribal Youth GIS: A Story Mapping Pilot Curriculum	Using GIS for Erosion Control Inspections	

Deriving Hydrography from LiDAR (30 min)

Advanced

Tyler Kaebisch, Geospatial Project Manager, Ayres Associates

There are many benefits from updated hydrography that are essential to a wide range of critical applications including natural resources, infrastructure management, agriculture, planning and water resource management. Elevation derived hydrography from lidar can greatly increase the accuracy of water features flowing across the landscape. By integrating multiple datasets such as culvert inventory locations and lidar DEMs, stream networks across counties and states can be updated to represent true concentrated flow of water. Elevation derived hydrography from lidar can then be used to update current inventories such as the state 24k Hydrography or the USGS National Hydrography Dataset (NHD). This presentation will review current lidar derived watershed hydrography examples and potential for future opportunities will be explored.

Evaluating Suitability of Projects for UAS LiDAR (30 min)

Intermediate

Paul Crocker, Project Manager (UAS Lead), Ayres Associates

(Draft) Unmanned Aircraft Systems (UAS) have gained traction in many organizations as an efficient and cost-effective tool for collecting and updating data in support of land management. In addition to visible and multi-band imagery, lidar offers a high degree of accuracy for topographic modeling and feature extraction. Knowledge of the advantages and limitations of the technology are crucial for ensuring that lidar is employed appropriately on projects. This session focuses on real world examples where lidar has proven beneficial and also highlights conditions where caution must be used when relying on UAS-based lidar sensors.

Parcel Fabric

Room: Aloeswood

Building a Better Parcel Fabric through Attribute Rules (60 min)

Advanced

Frank Conkling, Owner, Panda Consulting

The ArcGIS Parcel Fabric is a huge advance over previous land records solutions, but it can be even better through the use of attribute rules to automate many tasks, including expanding the functionality of the model. This presentation will explore both the standard ways in which most people use attribute rules for the parcel fabric and advanced techniques for an even better solution.

The Path to Pro: Easing the Transition for Parcel Fabric Users (30 min)

Intermediate

Ruth Workman, GIS Specialist, Pro-West

Planning your organization's move to the Parcel Fabric in ArcGIS Pro? Whether you're a current (ArcMap) Fabric user or are considering implementing the Fabric for the first time, this presentation will deliver the knowledge you need most when preparing for the Parcel Fabric in ArcGIS Pro. See the most important new functionalities

such as visualizing topology and configurable tasks, explore special considerations for the two different types of ArcMap users (those in the ArcMap fabric, and those in simple feature classes), and hear lessons learned about migration from both ArcMap fabric and from feature classes in ArcMap.

ArcGIS

Room: Marula

ArcGIS Insights: Explore and Report Your Data Visually (60 min)

Beginner

Ian Muehlenhaus, Senior Product Engineer, ArcGIS Insights, Esri

I'm going to demonstrate how ArcGIS Insights—both the cloud-based and the desktop versions—is so intuitive and user-friendly that everyone from high schoolers to data science professionals can use it for data science and geovisual analytics projects large and small.

ArcGIS Insights allows even non-GIS professionals in an organization to easily build entire spatial analytics workflows and reports right in the cloud—from a Mac, Windows, or Chromebook. This will be an interactive presentation, done completely within ArcGIS Insights. Come ready to learn and be inspired to dive into geovisual analytics in minutes, no matter what industry you work in.

Pro Perspectives: ArcGIS Pro 3.0 (30 min)

Intermediate

Matt Junker, Ongoing Services Manager, Cloudpoint Geospatial

Is ArcGIS Pro integrated into your daily workflows, or are you still trying to figure things out?

Join me as I discuss ArcGIS Pro perspectives from my experiences with Esri's workhorse desktop software. GIS Users of all experience levels will encounter topics ranging from similarities and differences between ArcGIS Pro and ArcMap, new functionality in Pro, and even Parcel Fabric migrations and workflows. The presentation will conclude with an open discussion on YOUR perspectives- either successes or struggles-on ArcGIS Pro.

THURSDAY
2 - 23

Practical Ways to Communicate the Value of your Work (30 min)*Beginner*

Adam Dorn, GIS Administrator, Winnebago County

Midwest modesty is a hallmark of Wisconsin values. However, it should not stand in the way of communicating the value of your work. For your work to provide value, your audience needs to know about it. Understanding your audience and ways to engage them could take some testing. This presentation will show practical GIS and Land Records examples to inspire you to get outside your comfort zone and expand how you communicate with your audience.

Harnessing the Power of Storytelling with Storymaps (30 min)*Beginner*

Jami Dennis, Geospatial Consultant, Geodetic Analysis LLC

Get inspired with this presentation that uses a real-life story to teach the power of storytelling. This presentation will illustrate how to harness the power of storytelling techniques with ArcGIS StoryMaps to educate, build awareness, or showcase a project. You will learn the key elements to what makes a good story and how to use these elements to create an impactful story that will engage and inspire your audience.

Tribal Youth GIS: A Story Mapping Pilot Curriculum (30 min)*Beginner*

Carl Sack, GIS Program Coordinator, Fond du Lac Tribal and Community College

Caroline Rose, GIS Specialist, Wisconsin Geological and Natural History Survey

Native American tribes rely on GIS for resource management and other needs. A collaboration led by the Indian Land Tenure Foundation is working to provide greater opportunities for Native youth to develop an interest in GIS through Story Maps. We developed an online curriculum to train mentors of Native American youth in ArcGIS Online tools and piloted the training for summer youth internships in the Lac Courte Oreilles and Menominee communities. We will present the curriculum

design along with the successes and challenges of the pilot programs and discuss our modifications and plans for expanding the program to additional communities this summer.

Hybrid

Room: Mangrove/Hybrid

Developing Guidelines to Resolve Addressing Conflicts (60 min)

Beginner

Brad Blumer, GIS Coordinator, City of Waukesha

The City of Waukesha is responsible for assigning addresses to structures and units within the city limits. As is the case with many organizations responsible for address management, the City has often grappled with maintaining an accurate address database and ensuring addresses follow a consistent address assignment system. The newly adopted Street Naming and Addressing Guidelines provide comprehensive policies to ensure unique street names, consistent addressing methodologies, and a clear workflow for resolving missing or incorrect addresses being utilized. Learn how the City developed these guidelines and applies a review workflow to deal with new project and existing address conflicts in the real world.

Using GIS for Erosion Control Inspections (30 min)

Intermediate

Tyler DeBruin, GIS Utility Analyst, Town of Grand Chute

Stormwater management can be a huge undertaking for a community, especially when it comes to new developments & projects. Some of the most frequent and important stormwater management items that need to be conducted are erosion control inspections. There are a lot of items the Wisconsin DNR requires for these to help protect our natural resources & critical infrastructure. Many communities throughout the state are falling behind on these required items because of staffing shortages to conduct them or lack of funding to hire an outside firm to take on the task. In this presentation I will cover how your community can use GIS to streamline the process of conducting erosion control inspections. By utilizing GIS to perform these inspections in house your community can save time, money, and increase compliance. This presentation will start

THURSDAY
2 - 23

by going over the basics of how to perform erosion control inspections. A laminated field guide will be provided that covers all the basics along with information on how to become a certified inspector. We will then dive into how GIS can help perform these inspections and how to automate reports, data collection, and outreach. This is a must-see presentation if you're with a local or county government agency.

Student and Career

Room: Guava

2nd Annual WLIA Career Connections

David Buehler, Sr. GIS Coordinator, City of Marshfield; WLIA Membership and Outreach Chair

Come join us for our 2nd annual Career Connections. Stop in for career advice, networking opportunities, resume reviews, interview and career search tips and tricks, mock interviews, and potentially real first interviews with employers. Open to all career levels, especially college students or those looking to break into the GIS industry. Hope to see you there.

3:30 PM

Map Gallery Opening

Special Interest Groups 4:00 PM – 5:00 PM

	Tamboti	Aloeswood	Marula	Aralia	Mangrove	Guava
4:00 PM	Wisconsin LiDAR Data	Municipal and Utilities	The Next Generation 911 WLIA Task Force	GIS Developers	Unmanned Aerial Systems SIG	Small Business

5:00 PM-7:00 PM

Exhibitor Reception and Silent Auction

Exhibit Hall and General Session Room: Kilimanjaro 1-8



Your Complete... Data Asset Management Source



SCAN ME



Authorized Distribution Partner

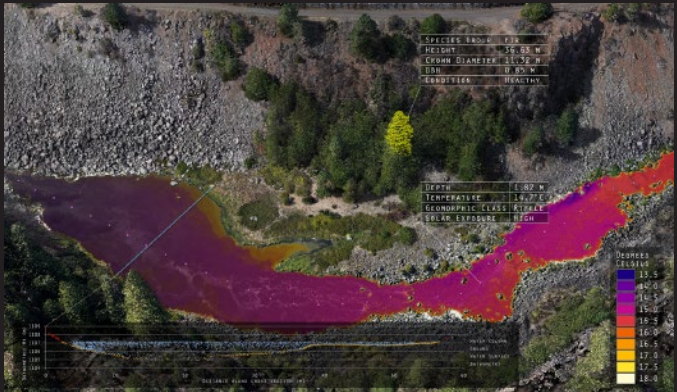


Partner Network

We can support you on-site, virtually, at your facility or ours

- Training
- Rentals
- Sales
- Support
- Service/Repairs

9755 Airways Ct.
Franklin, WI 53132
mapping@seilerinst.com
www.seilergeo.com



Anyone Can Take A Picture
We Tell Its Story

NV5 GEOSPATIAL
NV5Geospatial.com

DATAMARK

Your Trusted Partner In The
Successful Transition to NG9-1-1.

Scan The QR Code
To Learn More
or Visit DATAMARKGIS.com



AMERICA'S GO-TO AUTHORITY FOR PUBLIC SAFETY GIS

2023 WLIA SCHEDULE

FRIDAY, FEBRUARY 24TH

7:00 AM

Breakfast for the Past Presidents

Ebony

7:30 AM – 2:00 PM

Registration Desk Open

8:00 AM

Breakfast with the Exhibitors (Breakfast is located in the Exhibit Hall)

Exhibit Hall and General Session Room: Kilimanjaro 1-8

8:30 AM – 2:00 PM

Quiet Room Open (Near Registration)

8:30 AM – 9:30 AM

Morning Plenary featuring Keynote Speaker Dr. Joseph Kerski

General Session Room: Kilimanjaro 1, 2, 7, 8

9:30 AM – 10:30 AM

Silent Auction Ends (10 am)

Collect Silent Auction Items

Exhibit Hall: Kilimanjaro 3-6

FRIDAY
2 - 24

Breakout Sessions 10:30 AM – 12:00 PM

	Tamboti	Aloeswood	Marula
	Geospatial Strategy	Web Maps	Broadband
10:30 AM	Defining and Implementing Your Geospatial Strategy	Web Maps and Geofencing Tips/Tricks	FCC Broadband Serviceable Location Fabric Challenge
11:00 AM			
11:30 AM	GIS to Geospatial: Strategic Planning for a Digital Future	From Geocortex Essentials to VertiGIS Studio Web: Why, How, and Would We Do It Again?	Mapping Footprints & Badgering the FCC

Geospatial Strategy

Room: Tamboti

Defining and Implementing Your Geospatial Strategy (60 min)

Beginner

Jason Fetch, Senior Account Manager, Esri

A Geospatial Strategy is a business-oriented plan that defines how your organization will use GIS technology to achieve its goals and support all of your users. This session will provide concepts to help guide organizations through the process of understanding their organizations, planning and developing a Strategy, and implementing it through both organizational and technological changes. Learn some of our best practices and get an inside track to starting this process at your own organization.

FRIDAY
2 - 24

Aralia	Mangrove	Guava
Program Updates	Hybrid	Records Preservation
WROC 2023-25	Processing Drone Imagery on a Budget	Land Records Modernization - Sheboygan County
WICDI (And CALM) Update 2023		From a Moldy Basement to a Mobile App
Wisconsin Historic Aerial Imagery Finder 3.0 and Beyond	Improving Special Event Planning Workflows with Esri's Special Events Operations Solutions	Archiving Wisconsin's Official State Highway Map!

GIS to Geospatial: Strategic Planning for a Digital Future (30 min)

Beginner

Emily Champagne, Geospatial Manager, Milwaukee Metropolitan Sewerage District

This presentation will focus how the Milwaukee Metropolitan Sewerage District GIS reorganized its department to align itself with MMSD's 2022-2024 Strategic Plan and better support a future that includes digital-first workflows, 3D GIS, BIM, integration of CAD and GIS across platforms, and asset lifecycle management.

Web Maps and Geofencing Tips/ Tricks (60 min)*Intermediate*

Andrew Kline, GPS/GIS Application Specialist, Seiler Geospatial

In this presentation we will cover:

- The new Field Maps Web App and its capabilities.
- Geo-fencing in the Field Maps application
- Tips for setting up a Web Map for field data collection
- Overview of smart forms
- Using Arcade to automate your workflows

From Geocortex Essentials to VertiGIS Studio Web: Why, How, and Would We Do It Again?*Intermediate*

Katie Ginther, GIS Analyst, Milwaukee County

In 2021, Milwaukee County began the process of transitioning their main land information interactive map from the on-prem Geocortex Essentials environment to the SaaS VertiGIS Studio environment. This presentation will cover why that decision was made, how the new website was built, and what lessons were learned along the way. The presentation will also discuss the pros and cons of the VertiGIS Studio environment and what to consider when choosing it over ArcGIS Online.

FCC Broadband Serviceable Location Fabric Challenge (60 min)*Intermediate*

Andrew Scampono, Technical Manager, Michael Baker Intl.

In this session we will discuss the Broadband Serviceable Location (BSL) Fabric challenge process, how to obtain the fabric, formatting challenges, BDC portal navigation, and challenge submission. The Broadband Serviceable Location (BSL) Fabric is an iterative geospatial

dataset, which represents structures where broadband has been or could be deployed. To better determine the type and location of BSL, the FCC has created a challenge process to further refine the Fabric dataset. This refinement will aid in the distribution of federal funds to increase broadband access to those areas in need. Fabric challenges are highly technical, and crucial for garnering the most accurate broadband locations throughout the United States and US Territories. The process entails verifying the accuracy of the current vintage of the Fabric, which is created and maintained by CostQuest Associates through complex data aggregation and modeling. Adding and removing BSL's, as well as updating their attribution is completed through geospatial processes and address matching. Upon favorable adjudication by the FCC, successfully challenged locations will appear in future vintages of the Fabric.

Mapping Footprints and Badgering the FCC (30 min)

Intermediate

Colter Sikora, GIS Lead, Public Service Commission of Wisconsin
Milena Bernardinello, Broadband Mapping and Data Analyst, Public Service Commission of Wisconsin

With thousands of Wisconsinites slated to be served by government-funded broadband projects, the Public Service Commission (PSC) had to up its game in tracking grant projects. Furthermore, with the Federal Communications Commission (FCC) pushing states and people to challenge broadband maps on their terms, the PSC has learned to navigate new standards to help ensure everyone gets broadband in Wisconsin. This presentation will describe developing tools with ArcGIS Experience Builder, Survey123 Connect, and ArcGIS Instant Apps to serve citizens. The PSC broadband mapping team will also share how they use statewide mapping layers to challenge FCC maps and how they think better statewide layers will help get everyone in Wisconsin online.

WROC 2023-25 (30 min)*Intermediate*

Zach Nienow, Manager–Aerial Mapping, Ayres Associates
Andy Faust, GIS Analyst, NCWRPC

The Wisconsin Regional Orthoimagery Consortium (WROC) is underway for the upcoming 2023-25 cycle. Join program managers to learn about participation options, available products and services, timelines, budgets, and partnerships that are being planned for this cycle of the consortium.

WICDI (and CALM) Update 2023 (30 min)*Beginner*

Genevieve Burgess, GIS Research Analyst, State Cartographer's Office

Time for the yearly WICDI update! The Wisconsin Coastal Management Data Infrastructure is continuing to move forward in mapping road stream crossing in the Wisconsin Lake Superior and now Lake Michigan regions of the state. We are currently working on finetuning our public map, getting last minute data submissions, and cleaning up duplicate records, and more!

Wisconsin Historical Aerial Imagery Finder 3.0 and Beyond (30 min)*Beginner*

Jim Lacy, Associate State Cartographer, State Cartographer's Office
Jaime Martindale, Map & Geospatial Data Librarian Robinson Map Library

The State Cartographer's Office (SCO) and Robinson Map Library (RML) at UW-Madison have worked together for nearly 50 years to catalog and make historic aerial photography available to the general public. Since 2010 our "Wisconsin Historic Aerial Imagery Finder" (WHAIFinder) web app has become widely known as a source of free, scanned air photos from the late 1930s. Fast forward to the present day, what about the other 220,000+ physical photographs held by the Robinson Map Library? Scanning and indexing that volume of information has been beyond our capability, so we are taking a new approach. Thanks to a

new effort happening at the federal level, we have acquired 1950s and 60s digital imagery scanned from the original film. Similarly, we plan to acquire additional eras of imagery as they become available. In addition to making these single-frame, non-georeferenced photos available to the general public via an updated WHAIFinder app, we would like to get these data into the hands of city and county governments around the state. In doing so, we hope this will accelerate the availability of GIS-ready historic imagery products. In this talk we'll discuss our efforts over the last six months.

Hybrid

Room: Mangrove/Hybrid

Processing Drone Imagery on a Budget (60 min)

Intermediate

Brad Blumer GIS Coordinator, City of Waukesha
Megan Roessler, GIS Analyst, City of Waukesha

The City of Waukesha GIS Program has been evaluating using a drone to collect aerial imagery on recently completed City projects. Funding was available for the acquisition of the hardware, however the budget for specialized drone image processing software (Site Scan / Drone2Map) was not. The GIS Staff developed workflows to process and rectify the orthographic imagery and photospheres using available software, resulting in high-quality output suitable for publication. Learn how these options may provide a lower-cost alternative to organizations who wish to explore the value of drone imagery without committing to ongoing license costs.

FRIDAY
2 - 24

Improving Special Event Planning Workflows with Esri's Special Events Operations Solutions (30 min)

Beginner

Megan Roessler, GIS Analyst, City of Waukesha

Alex Gerke, Public Safety Application Administrator, City of Waukesha

Learn how City of Waukesha GIS Staff worked with Waukesha's Police and Fire Departments to modernize their pre-incident planning—a process that saw these departments move from annotating screenshots in Microsoft Word to using a set of ArcGIS Online-hosted applications in a matter of months.

This presentation will cover our experience deploying Esri's Special Event Operations Solution and tailoring it to our organization's needs, the process of training non-GIS staff to work with these applications independently, and our long-term plans to provide first responders and special event teams with the most comprehensive information possible.

Records Preservation

Room: Guava

Land Records Modernization—Sheboygan County (30 min)

Beginner

Andy Bartell, Owner, A&M Professional Services

In recent years, Sheboygan County's Land and Conservation Department has been utilizing various resources to modernize historical land record documents. Some of these documents have included Town Orders, Easements, and also construction plan set documents. With a majority of both types of documents, the physical paper documents have been scanned into a digital format. A&M Professional Services is working with Sheboygan County to take the digital documents and manually extract specific spatial and tabular data from the images. We're using GIS to perform the data extraction, and carefully constructing a web-based solution to give the public access to the data. The goal of this project is to provide a web-based, GIS resource to connect the public with the County's Town Orders and Plan Set documents. The goal is to provide these documents to anyone with internet access, and also provide this information in a simple, easy-to-use map-centric Esri GIS web application.

From a Moldy Basement to a Mobile App (30 min)

Intermediate

Lee Frederick, Enterprise GIS Administrator, Milwaukee County
Kathy Bach, Lead GIS Analyst, Milwaukee County
Bridget Monahan, GIS Technician, Milwaukee County

Does your organization struggle with documents? Virtually every organization must deal with paper documents, and Milwaukee County is no exception. In this presentation, we will cover the strategies the Milwaukee County Land Information Office employed to process non-recorded documents including plats of survey, Department of Transportation relocation orders, and easements.

We will discuss how these documents are obtained, digitized, and how they benefit users. By extracting useful information and turning it into data, we were able to develop workflows specific to each document type. We will discuss the technical solutions used for storing and managing the data and documents, and the applications that were developed to make this data available to the public. The lessons learned from this process can be leveraged for the future publication of informative but currently inaccessible documents, turning mold into gold

Archiving Wisconsin's Official State Highway Map! (30 min)

Beginner

Christine Koeller, Airport GIS Program Manager, Wisconsin
Department of Transportation

First printed in 1918, Wisconsin's official state highway map is a unique time capsule that has captured more than just highway history. Come on a road trip to see what this iconic map can teach us about road safety, highway expansion, attracting visitors, Wisconsin Governors, travel, and more. This session will also preview the complete collection of Wisconsin state highway maps that are now available digitally to the public.

12:00 PM – 2:00 PM

Lunch

Town Hall (Part 2)

Awards

General Session Room: Kilimanjaro 1, 2, 7, 8

2:00 PM – 3:30 PM

New Board Meeting

Room: Mangrove

View the Schedule and mark your favorites on Sched.

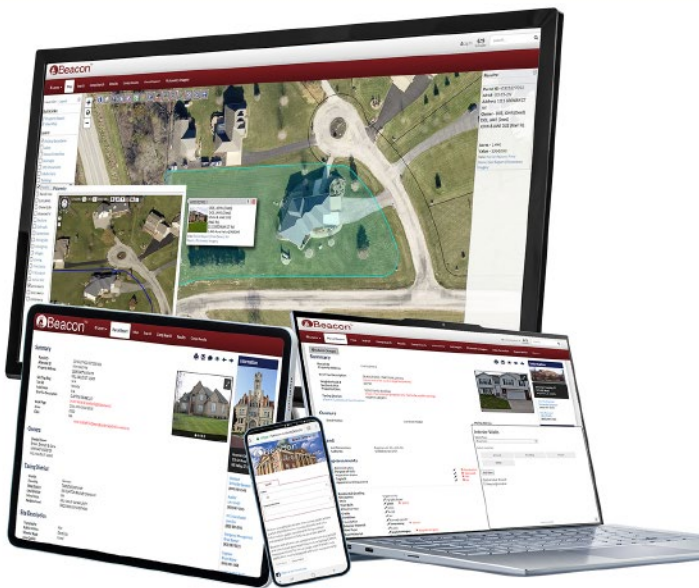


**FRIDAY
2 - 24**



Beacon™

Online Access to Local Government Data



Property Record Cards | Appeals | Comparable Search | GIS | Interactive Forms | Assessment Notices | Permits

SchneiderGIS.com



A full service engineering and design firm that provides...

GIS Services and InfiniteGIS

Asset Management

The screenshot displays the InfiniteGIS web application interface. At the top, it says "Welcome back sdaniel | Sign Out". Below that is a "GENERAL INVENTORY" section with a dropdown menu for "Inventory Transaction..." and a "New Item" button. A search bar contains "1/1/2019" for "Date From", "12/31/2019" for "Date To", and "Repair" for "Invoice". There are "Clear" and "Page Size: 25" options. Below this is a table titled "INVENTORY TRANSACTIONS" with columns for "QTY", "Unit Cost", and "Total Value". A search bar at the bottom of the interface contains the text "I want to...". A map is visible in the lower right, showing a street grid with a search bar and various map controls. A sidebar on the left contains a "Query" section with a search bar and a "Query" button. Below the search bar, there are several dropdown menus and a "To" field with a "contains" dropdown and "John Smith" entered. At the bottom left, there are "Add" and "Add Subclass" buttons.



GRAEF

www.graef-usa.com

EXHIBIT HALL FLOOR PLAN

February 22 - 24, 2023 — Kalahari Resort — Wisconsin Dells, WI

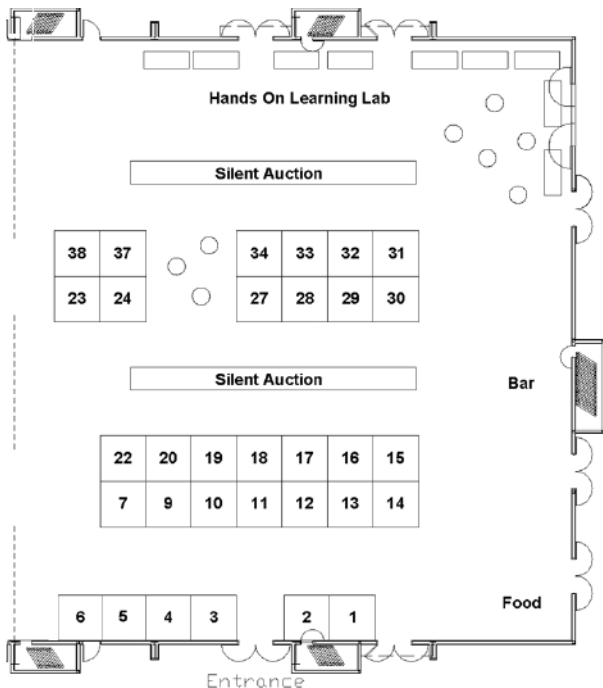


Exhibit Hall Hours

(New!) Breakfast with the Exhibitors Thursday and Friday 8 am-8:30 am.

Thursday: 10:00 a.m. – Noon and 1:30 p.m. – 7 p.m. with the Exhibitor Reception from 5 – 7 p.m.

Friday: 9:30 a.m. – 10:30 a.m.

EXHIBITORS &
SPONSORS

2023 WLIA EXHIBITORS

February 22 - 24, 2023 — Kalahari Resort — Wisconsin Dells, WI

Avineon

<http://www.avineon.com>

Booth 33



Avineon, Inc. was founded in the United States in 1992 on the principles of delivering high-quality solutions that rely on industry best practices and operational excellence. As a global provider of visualization services, we specialize in delivering value through digital modernization, engineering support, and spatial intelligence. We focus on the practical use of technology, applied with domain expertise. With headquarters in McLean, Virginia, and offices throughout North America, Europe, India, and the Middle East, Avineon offers a global delivery model with regional support. Avineon has provided services to government clients on national, regional, and local levels for decades as well as to clients around the globe in multiple commercial sectors. As a trusted partner for over 300 customers, we continuously seek new and improved ways of meeting our clients' needs. Our innovative approach makes us a leader in next generation operation and efficiency.

PLATINUM SPONSOR

Ayres

<https://www.ayresassociates.com/>

Booth 14 & 15



Ayres has been a platinum sponsor of the WLIA annual convention since 2004. With a team of 350+ innovative problem-solvers nationwide, we stand with integrity behind thousands of projects that strengthen communities and our country's infrastructure, economy, and environment. Clients notice our project managers' ability to translate and transform every detail into actionable, understandable, smoothly coordinated pieces of a successful project. Side-by-side with our client partners, our project managers serve as the confident, communicative navigators at the helm of each project. Their tools and expertise include geospatial, civil and municipal engineering, transportation, structural design and inspection, river engineering and water resources, architecture, mechanical/electrical/plumbing engineering, landscape architecture, environmental, planning and development, and telecommunications and SUE.

2023 WLIA EXHIBITORS

February 22 - 24, 2023 — Kalahari Resort — Wisconsin Dells, WI

GOLD SPONSOR

Catalis

<https://catalisgov.com>

Booth 6

CATALIS™

ADVANCING GOVERNMENT. ENGAGING CITIZENS.



The leading provider of advanced software solutions for government and constituents across North America.

Catalis is the transformational SaaS and integrated payments partner powering all levels and sizes of government—municipalities, counties, states, and federal agencies—with thousands of clients in all 50 states and Canada.

We deliver fully integrated solutions to government agencies that streamline workflows, save time, and improve public engagement. With our industry-specific support, we help agencies remain at the forefront of technology in government.

Tax: Comprehensive cloud-based Tax & Treasury software solutions.

Public Works & Engagement: Market-leading SaaS solutions dedicated to promoting and enhancing communication by bridging the gap between local government organizations and their communities.

Payments: Integrated payment services that include comprehensive payment options and contactless solutions to exceed constituent expectations and improve cash flow.

2023 WLIA EXHIBITORS

February 22 - 24, 2023 — Kalahari Resort — Wisconsin Dells, WI

PLATINUM SPONSOR

DATAMARK

<https://datamarkgis.com/>

Booth 12 & 13



As trusted advisors in public safety, DATAMARK brings comprehensive, real-world expertise in police, fire, EMS and 9-1-1 leadership roles to Next Generation 9-1-1 transitions. The DATAMARK team leads the industry by shaping rules and legislation, and by building a suite of products and services that ensure accurate emergency response location data in life-critical situations. DATAMARK empowers its team and stakeholder partners to foster trusted relationships and cultivate data integrity for informed decision making. DATAMARK, the public safety GIS team of Michael Baker International, has decades of proven experience in mission-critical government addressing projects. The team works with clients to solve their complex needs, from data quality checks and addressing to workflow analysis and more.

Cloudpoint Geospatial

<https://cloudpointgeo.com>

Booth 24



Cloudpoint Geospatial is a leading provider of Geographic Information Systems (GIS) solutions for organizations within public works, facilities, land records, utilities, transportation, and engineering sectors. As your trusted Esri business partner, we help people drive intelligent decision making using mapping technology. We are here to bring you ArcGIS Desktop, Enterprise, Portal and Online solutions all delivered through the Esri platform. Our portfolio varies from large asset inventories to big data solutions delivered through the cloud.

2023 WLIA EXHIBITORS

February 22 - 24, 2023 — Kalahari Resort — Wisconsin Dells, WI

BRONZE SPONSOR

Esri

<https://www.esri.com/en-us/home>



Esri, the global market leader in geographic information systems (GIS), offers the most powerful mapping and spatial analytics technology available. Since 1969, Esri has helped customers use The Science of Where to unlock the full potential of data to improve operational and business results. Today, Esri software is deployed in more than 350,000 organizations including the world's largest cities, most national governments, 75% of the Fortune 500, and more than 7,000 colleges and universities. Esri engineers the most advanced solutions for digital transformation, IoT, and location analytics to create the maps that run the world. Visit us at esri.com.

GeoComm Inc.

<https://www.geocomm.com/>



Booth 22

GeoComm, provider of Public Safety Location Intelligence®, serves local, regional, statewide, and military agencies in forty-nine states, helping keep more than 100 million people safe. Over the last 27 years, GeoComm's public safety GIS systems have routed emergency calls to the appropriate 9-1-1 call center, mapped the caller's location on a call taker or dispatcher map, and guided emergency responders to the scene of the accident on mobile displays within police, fire, and ambulance vehicles. In addition, our statewide NG9-1-1 GIS project footprint has expanded to include 17 statewide projects across the country. To learn more about GeoComm visit www.geocomm.com.

EXHIBITORS
&
SPONSORS

2023 WLIA EXHIBITORS

February 22 - 24, 2023 — Kalahari Resort — Wisconsin Dells, WI

GPI Geospatial, Inc.

https://www.gpinet.com/?page_id=5682

Booth 4

GPI

GPI Geospatial is an employee-owned firm, providing professional aerial mapping, LiDAR, and surveying services since 1973. GPI has 12 fully staffed surveying and mapping offices throughout the Eastern United States, including our regional office in Sheboygan, WI. We provide precision mapping, imagery, and LiDAR acquisition and processing as well as surveying services for transportation, planning, design, construction, energy, and government clientele. GPI Geospatial owns and operates multiple aircraft and vehicles equipped with advanced imagery and LiDAR sensors, providing customized solutions for our clients whether it's from the air, ground, or mobile platforms. Our team can gather, assess, standardize, and optimize geospatial data for use across the enterprise using GIS technology. Our greatest asset remains our employees, many of whom are Professional Licensed Surveyors and Mappers, GIS Analysts, ASPRS Certified Photogrammetrists, and Mapping Scientists. GPI's personnel include 20 Licensed Professional Surveyors and Mappers, 7 ASPRS Certified Photogrammetrists, 7 GIS Professionals, and over 80 Surveying and Mapping professionals: many with over 20 years of experience.

PLATINUM SPONSOR

GRAEF

<https://graef-usa.com/>

Booth 29 & 30

GRAEF

GRAEF is a full service engineering, planning, and design firm that provides tailored engineering and design solutions for our clients. Our mission is to improve the physical environment for the benefit of society in a sustainable manner. GRAEF offers civil, GIS, structural, environmental, transportation, bridge, MEP, construction, industrial architecture and industrial engineering as well as landscape architecture, operations, planning, and aviation engineering consulting, in addition to land surveying from offices located in Milwaukee, Madison, Green Bay, Chicago, Miami, Orlando and Minneapolis

2023 WLIA EXHIBITORS

February 22 - 24, 2023 — Kalahari Resort — Wisconsin Dells, WI

OPENING NIGHT SPONSOR

ITpipes

<https://itpipes.com/>

Booth 23



ITpipes turns your pipe inspections into mapped, actionable intelligence! ITpipes provides you with planning, prioritizing, field collection, and data management tools in a fully integrated Esri Solution. The streamlined data management and powerful reporting features with dynamic mapping take your agency's pipe inspection program from proactive to predictive. Our interoperable Esri applications provide you with inspection information when and where you need it.

Legislative Technology Services Bureau

<https://legis.wisconsin.gov/ltsb/>

Booth 18



The nonpartisan Legislative Technology Services Bureau (LTSB) is responsible for providing technical support to the Wisconsin Legislature and its service agencies. The GIS Team performs demographic & geographic analysis, develops interactive web applications, produces a large catalog of Legislative maps, and coordinates geographic information programs in order to provide the best data for Legislative activities. The GIS team is tasked with providing redistricting expertise and training to the Legislature, as well as local municipalities and counties. The GIS team also coordinates the statewide collection of municipal GIS datasets, participates in geographic boundary improvement programs offered by the US Census Bureau, and maintains district boundary information to both the Legislature and the public.

EXHIBITORS &
SPONSORS

2023 WLIA EXHIBITORS

February 22 - 24, 2023 — Kalahari Resort — Wisconsin Dells, WI

BREAK SPONSOR

MasterGraphics, Inc.

<https://www.mastergraphics.com/>

Booth 38



MasterGraphics has provided innovative print technology to the engineering and design community for over 70 years in the central Midwest. Our mission is to provide the most advanced technology to our clients to ensure they have best-in-class processes for leveraging both 2D and 3D printing. Improving our clients' efficiency, competitive advantage, time to market, and innovation by offering state of the art solutions from valued partners is our pledge.

SILVER SPONSOR

Mead & Hunt, Inc.

<https://meadhunt.com/>

Booth 11



Symbiont recently joined with Mead & Hunt. As Mead & Hunt, we can provide our clients all the benefits of a national, full-service firm, while maintaining our core team and extensive client knowledge. When managing the wealth of information related to systems and facilities, many organizations struggle with clunky documentation methods and scattered data. Mead & Hunt combines our team of municipal engineers and geographic information system (GIS) professionals with your local government personnel to identify your needs. We work hand-in-hand with you to develop creative off-the-shelf GIS technological solutions that help you lead successful initiatives. Skilled, diverse, and deeply experienced, we are driven by our clients' success, because we measure our success by theirs. We're experts in planning, design, engineering, and architecture. Our portfolio of services includes municipal infrastructure improvements, GIS solutions, planning, stormwater management, mapping and surveying, historic preservation, water resources, and airport planning and engineering.

EXHIBITORS &
SPONSORS

2023 WLIA EXHIBITORS

February 22 - 24, 2023 — Kalahari Resort — Wisconsin Dells, WI

SILVER SPONSOR

Nearmap

<https://www.nearmap.com/us/en>

Booth 27



Since our 2007 founding in Perth, Australia, Nearmap has evolved from a small online startup to become a next-gen digital content leader and aerial technology company. We offer businesses instant access to high-resolution aerial imagery, city-scale 3D datasets, and integrated geospatial tools.

Every day, Nearmap helps thousands of users conduct virtual site visits for deep, data-driven insights—enabling informed decisions, streamlined operations, and significant cost savings.

Nearmap was founded with one goal: to empower all kinds of businesses and organizations, no matter what size or industry, with reliable aerial data. Up-to-date, richly detailed location information powers projects for our customers across the globe. If we can change the way people view the world, they can profoundly change the way they work.

2023 WLIA EXHIBITORS

February 22 - 24, 2023 — Kalahari Resort — Wisconsin Dells, WI

GOLD SPONSOR

NV5 Geospatial

<https://www.nv5.com/geospatial/>

Booth 7

NV5 GEOSPATIAL

NV5 Geospatial, Inc., the nation's largest independent geospatial data firm, provides geographic insights to the largest government and corporate organizations that need geospatial intelligence to mitigate risk, plan for growth, better manage resources and advance scientific understanding. A pioneer in advanced mapping technology, NV5 Geospatial's end-to-end solutions and services deliver the industry's highest data quality and accuracy, while leveraging the widest array of technologies for analyzing all types of terrains. Customers use the company's acquisition, processing, analytics and visualization solutions in a range of technical and scientific disciplines—from geology and biology, to hydrology, forestry and civil engineering. Utilities, oil and gas producers, engineering and construction firms, as well as the military and major government agencies, are NV5 Geospatial customers. NV5 Geospatial has multiple offices around the country.

Panda Consulting

<https://www.pandaconsulting.com>

Booth 31 & 32



Panda Consulting
Your Partners in GIS

Panda Consulting is a professional services firm specializing in Parcel Mapping and Land Records management and provides complete consulting, conversion, training and maintenance services for all related data.

2023 WLIA EXHIBITORS

February 22 - 24, 2023 — Kalahari Resort — Wisconsin Dells, WI

SILVER AND OPENING NIGHT SPONSOR

Pro-West & Associates, Inc.

<https://www.prowestgis.com/>

PROWEST
& Associates

Booth 17

Pro-West & Associates supports local governments in Wisconsin with geospatial data services, solutions, and systems that deliver location transformation, help them reach their land records goals and allow them to better serve residents. Pro-West & Associates is an award-winning GIS consulting firm based in Walker, MN and has been an Esri business partner for over 30 years.

MAP CONTEST SPONSOR

Ruekert & Mielke, Inc.

<http://www.ruekertmielke.com/>

 Ruekert • Mielke

Booth 3

Ruekert & Mielke, Inc. (R/M) is a 100% employee-owned civil engineering firm with more than 75 years of service to local communities and organizations. Our engineers, environmental scientists, agricultural experts, and technology consultants empower our clients to thrive by solving infrastructure challenges.

R/M develops and supports GIS-driven solutions that eliminate the need to purchase expensive hardware, costly software, or hire GIS experts. Our in-house developers and expert engineers develop solutions based on feedback from clients and a deep understanding of what is most important to communities like yours.

As your total solution partner, you can also leverage our in-house survey teams to collect data, our partnerships for document scanning and pipe televising, or our team of GIS analysts to give your data some polish.

EXHIBITORS
&
SPONSORS

2023 WLIA EXHIBITORS

February 22 - 24, 2023 — Kalahari Resort — Wisconsin Dells, WI

PLATINUM SPONSOR

Schneider Geospatial

<https://www.schneidergis.com>

Booth 9 & 10



Since 1989, Schneider Geospatial has been providing creative geospatial and GovTech solutions that change the nature of how people interact with government, improving service while lowering costs. Schneider Geospatial is a leader in providing Geographic Information Systems (GIS) solutions to hundreds of municipal, county, state, federal, and private entities. Serving over 20% of the counties in the U.S., Schneider Geospatial is one of the largest GovTech providers with industry-leading solutions such as Beacon (local government information for the web), GeoPermits (cloud-based permitting and workflow management), and Agland (which automates the process of calculating assessments for agricultural land). Schneider Geospatial is recognized nationally for its award-winning work.

2023 WLIA EXHIBITORS

February 22 - 24, 2023 — Kalahari Resort — Wisconsin Dells, WI

GOLD SPONSOR

Seiler Instrument Geospatial

<https://www.seilerinst.com/>

Booth 1 & 2



Seiler is a family owned business established in 1945. We offer our clients the most advanced survey, construction, mapping/GIS, drone equipment and software technology on the market. Seiler specializes in geospatial sales across Illinois, Indiana, Iowa, Kansas, Michigan, Wisconsin, Missouri, and Nebraska with seven offices. Our experienced staff are all industry professionals who help guide, support, and educate our clients with productivity solutions. Seiler has nationally recognized repair centers that can service and calibrate your survey, Trimble Mobile LiDAR, and construction instruments. We are an authorized distributor for Trimble, Spectra Precision, Autodesk, Esri, DJI, GeoSLAM, LaserTech and many more. Seiler stands behind all products we offer. Our diverse staff are certified trainers, drone pilots with FAA remote pilot certificates, GNSS/GISP professionals, and registered land surveyors with a large professional support team on staff to serve our customers.

BRONZE SPONSOR

Terra Firma Analytics

<https://terrafirmaanalytics.com>



Terra Firma Analytics LLC was founded on the principals that GIS-based solutions are not out of reach for anyone, and GIS is a great way to force multiply your entire organization's geospatial intelligence capability. In our experiences, when we help you develop the tools and workflows specific to your organization's needs, no matter how big or small, everyone wins. We offer cost effective geospatial and mapping solutions, GIS instructional courses, customized GIS training opportunities, small scale UAV collected aerial products, and customized field data collection workflows. We specialize in ESRI's Survey123 suite and other ESRI field collection technologies. We are here to help your data driven decisions stand on solid ground.

EXHIBITORS &
SPONSORS

2023 WLIA EXHIBITORS

February 22 - 24, 2023 — Kalahari Resort — Wisconsin Dells, WI

LANYARD SPONSOR

Transcendent Technologies

<https://www.transcendenttech.com>

Booth 28

Transcendent Technologies is a provider of solutions and services for state, county, and local government entities. Our software packages include applications that support parcel management, property taxation, tax payment, general receipting, permitting activities and land conservation. Each software package is designed to integrate seamlessly with other government systems including tract indexes, document imaging, geographic information, and financial systems. This design greatly enhances the land management process, improving efficiency and reducing errors. Our understanding of government processes gives us a unique advantage in assisting government entities with custom development and integration services. Most recently, we have launched our GIS Services Division and have released our first product which is the WI Real Estate Sales Finder. Overall, TTEch can assist you in optimizing and improving your business workflow.



TriMin Systems

<https://www.trimingov.com/>

Booth 34

For over 30 years TriMin has provided software designed to meet the specialized needs of the County's Register of Deeds office and their customers. In addition to our full suite of register of deeds software and supporting applications, TriMin provides integrations to industry leading applications including Transcendent and the WI Department of Revenue, among many others. Customers rave about our helpful support team, customer service and configurable options.



2023 WLIA EXHIBITORS

February 22 - 24, 2023 — Kalahari Resort — Wisconsin Dells, WI

Wisconsin Geological and Natural History Survey

<https://wgnhs.wisc.edu/>



Wisconsin Geological
and Natural History Survey
DIVISION OF EXTENSION
UNIVERSITY OF WISCONSIN-MADISON

Booth 5

The Wisconsin Geological and Natural History Survey conducts earth-science surveys, field studies, and research. We provide objective scientific information about the geology, mineral resources, and water resources of Wisconsin. We collect, interpret, disseminate, and archive natural resource information. We communicate the results of our activities through publications, technical talks, and responses to inquiries from the public. These activities support informed decision making by government, industry, business, and individual residents of Wisconsin.

Wisconsin Real Property Listers Association

<https://wrpla.org/>

Booth 20

In 1951, the Wisconsin Legislature created the position of the County Real Property Lister (RPL) to ensure that lands were being represented accurately for assessment and taxation purposes. The Wisconsin Real Property Listers Association (WRPLA) is a statewide association comprised of county and municipal real property lister offices/departments.



Wisconsin Register of Deeds Association

<https://www.wrdaonline.org/>

Booth 19

The Register of Deeds files, records, and issues instruments and documents of significance both to the community as a whole and to its individual citizens. Vital records document the span of our lives from birth to death. Land records documenting title in Wisconsin are maintained. The office also maintains land records documenting title over \$613.1 billion (2020 equalized value of real property, WI Dept of Revenue) in real property in Wisconsin.



EXHIBITORS &
SPONSORS

2023 WLIA EXHIBITORS

February 22 - 24, 2023 — Kalahari Resort — Wisconsin Dells, WI

Wisconsin Society of Land Surveyors (WSLS)

<https://www.wsls.org/>

Booth 37



Organized in 1952, the Wisconsin Society of Land Surveyors (WSLS) is a statewide volunteer organization committed to the advancement of the surveying profession. The WSLS consists of ten chapters throughout Wisconsin. Each chapter works diligently within its region, organizing and participating in community and educational events, helping the public access licensed surveyors, and advocating in legislation and issues affecting the surveying profession.

Wisconsin State Cartographer's Office

www.sco.wisc.edu

Booth 16



The State Cartographer's Office (SCO) is Wisconsin's resource for information about maps, cartography, geographic information systems (GIS), land information systems (LIS), and geospatial technology. We support the state's geospatial community through presentations and educational workshops, technical consulting, print and digital publications, Web-based catalogs and data services, and information about events, jobs and emerging trends. The SCO provides services to a diverse array of mapping and geospatial data producers and consumers in Wisconsin. This includes helping the general public find and understand map resources through our free online and phone services. The SCO also serves as a liaison between professionals in government, education, non-profits and the private sector, helping to expand the adoption and effective use of geospatial technology and methods in these sectors.



Decisions That Stand On Solid Ground

- ▲ Geospatial and Mapping Services
- ▲ Field Data Collection Solutions
- ▲ UAV Aerial Mapping
- ▲ Instructional Services

<https://terrafirmanalytics.com>

Mead & Hunt

Developing creative
off-the-shelf GIS
solutions to fit
your needs.

Visit us at booth #11

888-364-7272

meadhunt.com



PROWEST
& Associates

Award-Winning GIS Land Records services

- 📍 Parcel Fabric implementation & training
- 📍 GIS packages for local government
- 📍 Enterprise GIS implementation
- 📍 Public and internal app configuration
- 📍 System integration
- 📍 System architecture

**EMPOWERING ALL COMMUNITIES
TO LIVE BETTER.**

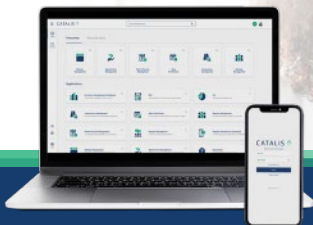
www.prowestgis.com

2023 WLIA Conference Notes

2023 WLIA Conference Notes

CATALIS™ 

All your solutions,
now on one platform.



Jackie Pankau-Daniels
Client Success Manager

jackie.pankau-daniels@catalisgov.com
(203) 816-6547



WISCONSIN
LAND INFORMATION
ASSOCIATION

Save the Dates

2023 Spring Regional: May 17 - 19

The Lismore Hotel, Eau Claire

2023 Fall Regional: October 18 - 20

The Pointe Hotel and Suites, Minocqua

2024 Annual Conference: February 28 - March 1

Hyatt Regency and KI Center, Green Bay

2025 Annual Conference: February 26-28

Hilton Paper Valley Hotel, Appleton

**Mobile
Schedule**



**Twitter
#WLIA2023**

