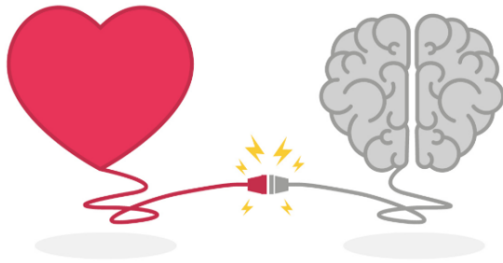


# Inclusive & Emotionally Intelligent Leadership



Women in Manufacturing (WIM)  
Virtual Learning Series  
February 9, 2022

Presented by:  
**Sarah Eppink**  
Principal & Founder, Aisling Group LLC

## 4 Aspects of Emotional Intelligence:

**Managing  
Yourself**

**Intrapersonal  
Skills**

**Resilience**

**Partnering  
with Others**

**Interpersonal  
Skills**

**Adaptability**

## 6 Behaviors of Inclusive Leaders:

1. Visible Commitment
2. Humility
3. Awareness of Bias
4. Curious About Others
5. Cultural Intelligence
6. Effective Collaboration



### **Sarah Eppink**

Principal & Founder, Aisling Group LLC  
Certified Professional Coach and  
Talent Development Consultant  
[sarah@aislinggroupllc.com](mailto:sarah@aislinggroupllc.com)  
[www.aislinggroupllc.com](http://www.aislinggroupllc.com)

[Click here to schedule your 45-minute complimentary consultation!](#)