



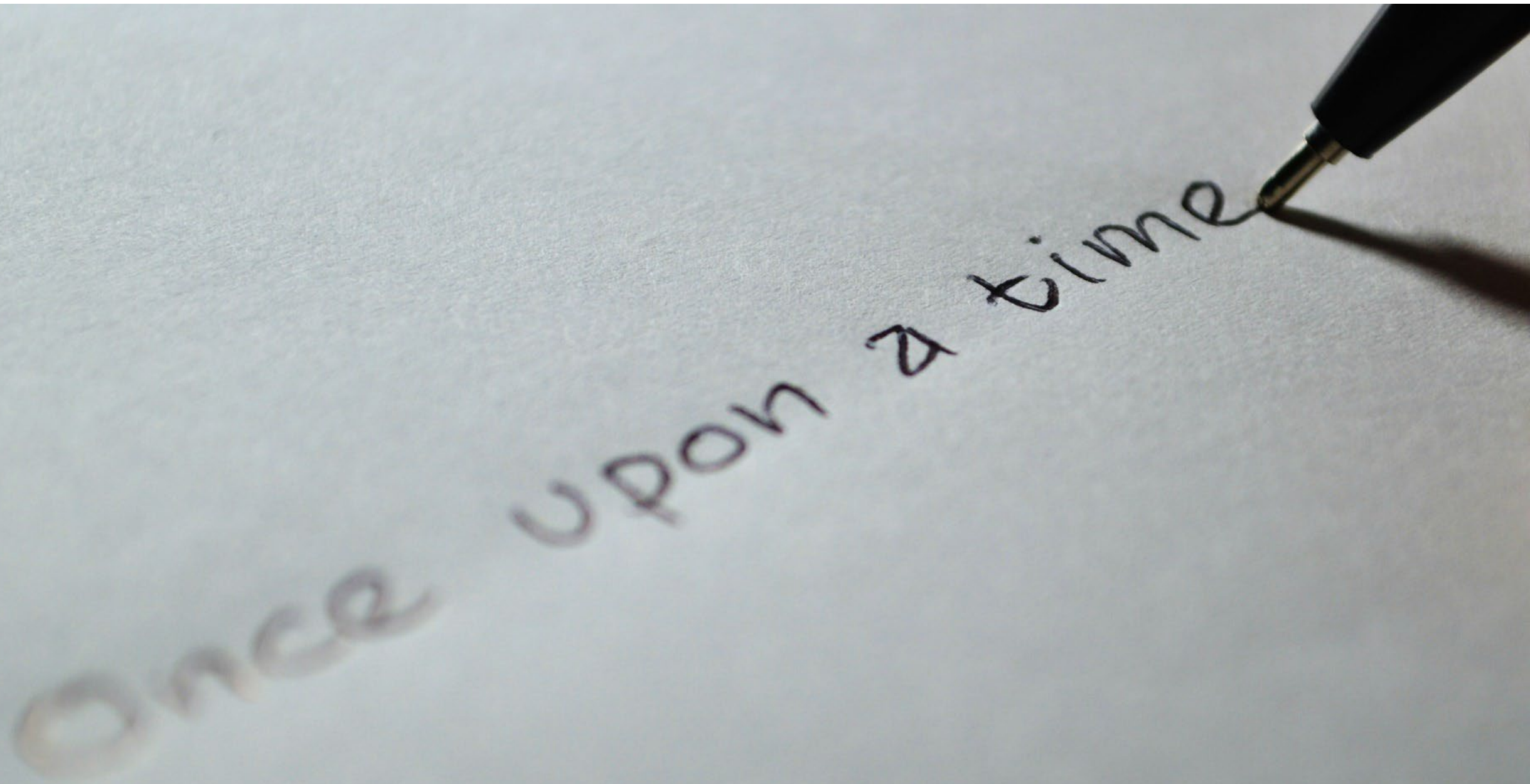
**Is this thing on?
How to communicate so people will hear you**

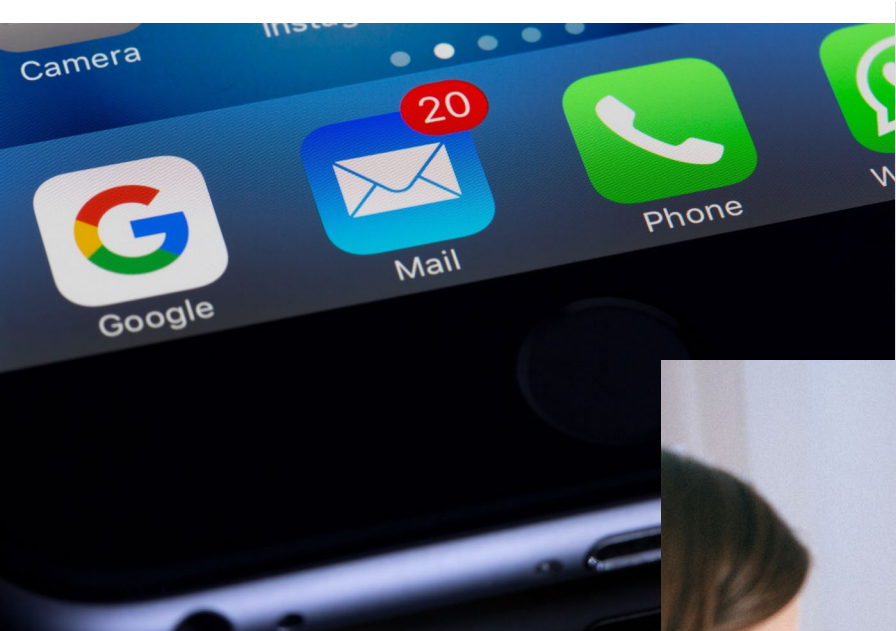


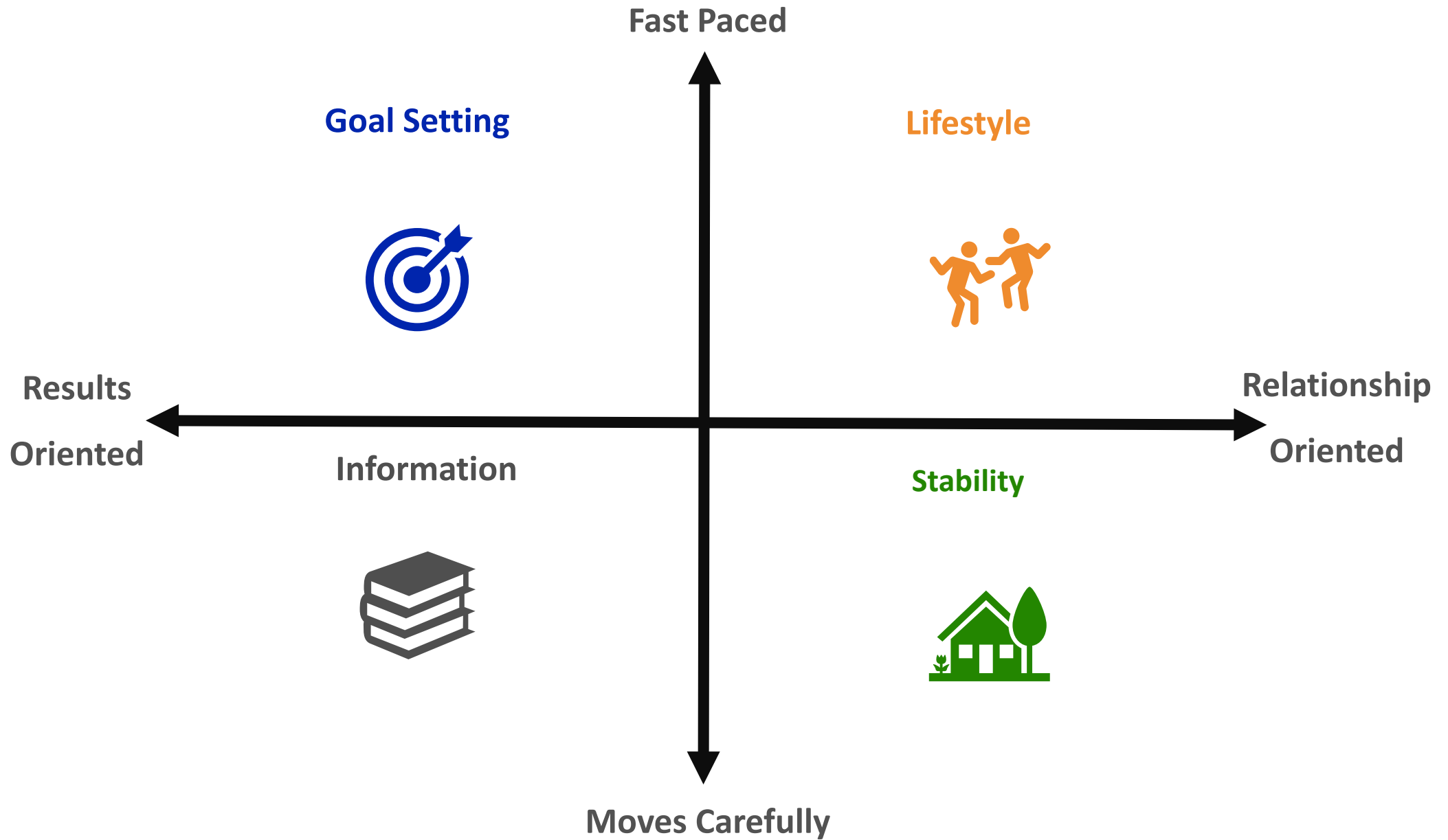
\$4000 - \$6000/year/employee

Figures taken from David Grossman and Debra Hamilton Studies reported by SHRM

Once upon a time

A close-up photograph of a black ballpoint pen writing the words "Once upon a time" in cursive on a white, textured surface. The pen is positioned at the end of the phrase, with its tip resting on the paper. The lighting is soft, creating a slight shadow of the pen on the paper to the right.



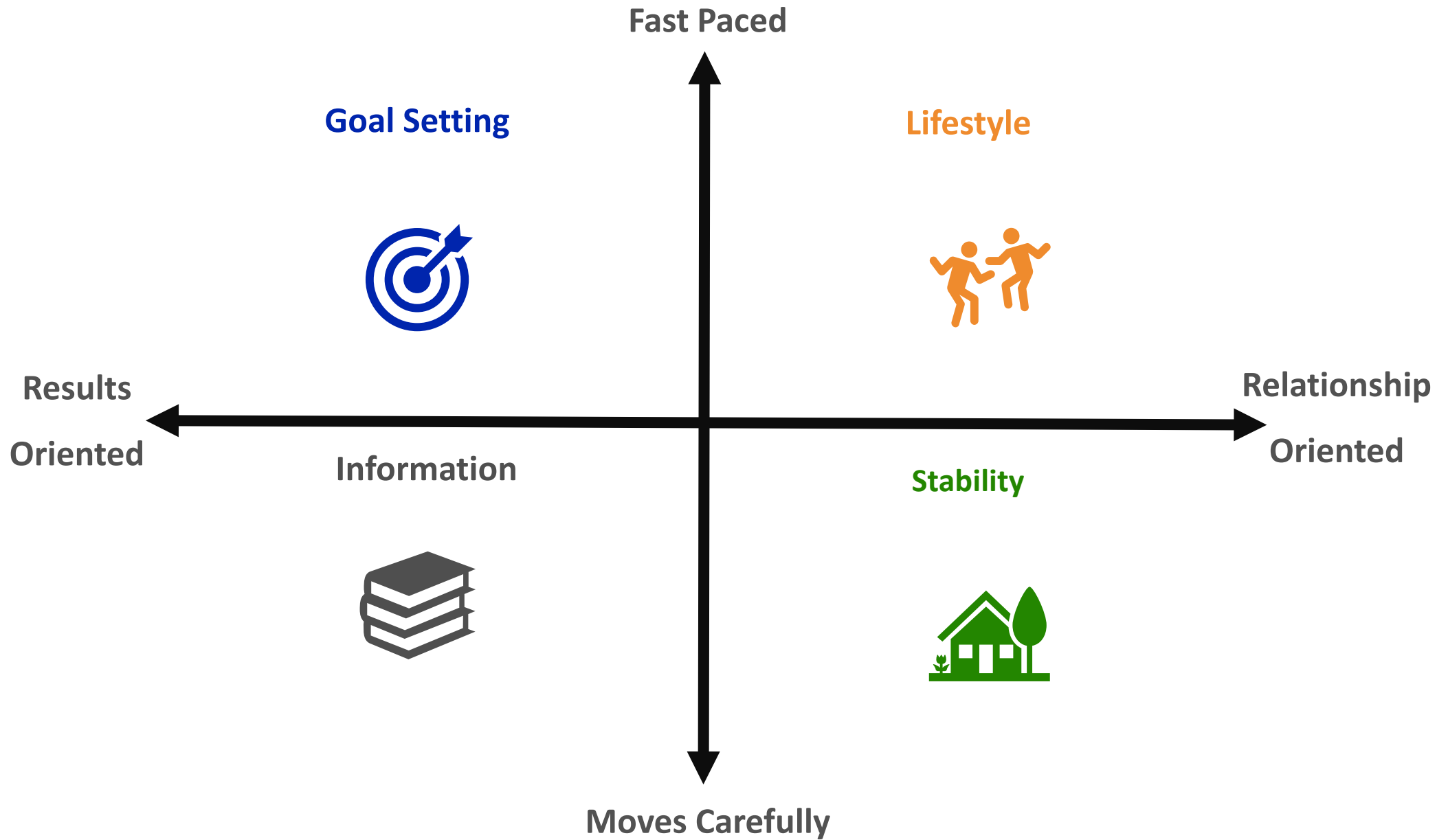


A woman with long, straight brown hair is sitting in a black leather office chair. She is wearing a dark grey blazer over a white top. She is looking directly at the camera with a neutral expression. In the foreground, the back of a man's head and shoulder, wearing a white shirt, is visible, slightly out of focus. The background is a bright, blurred office setting.

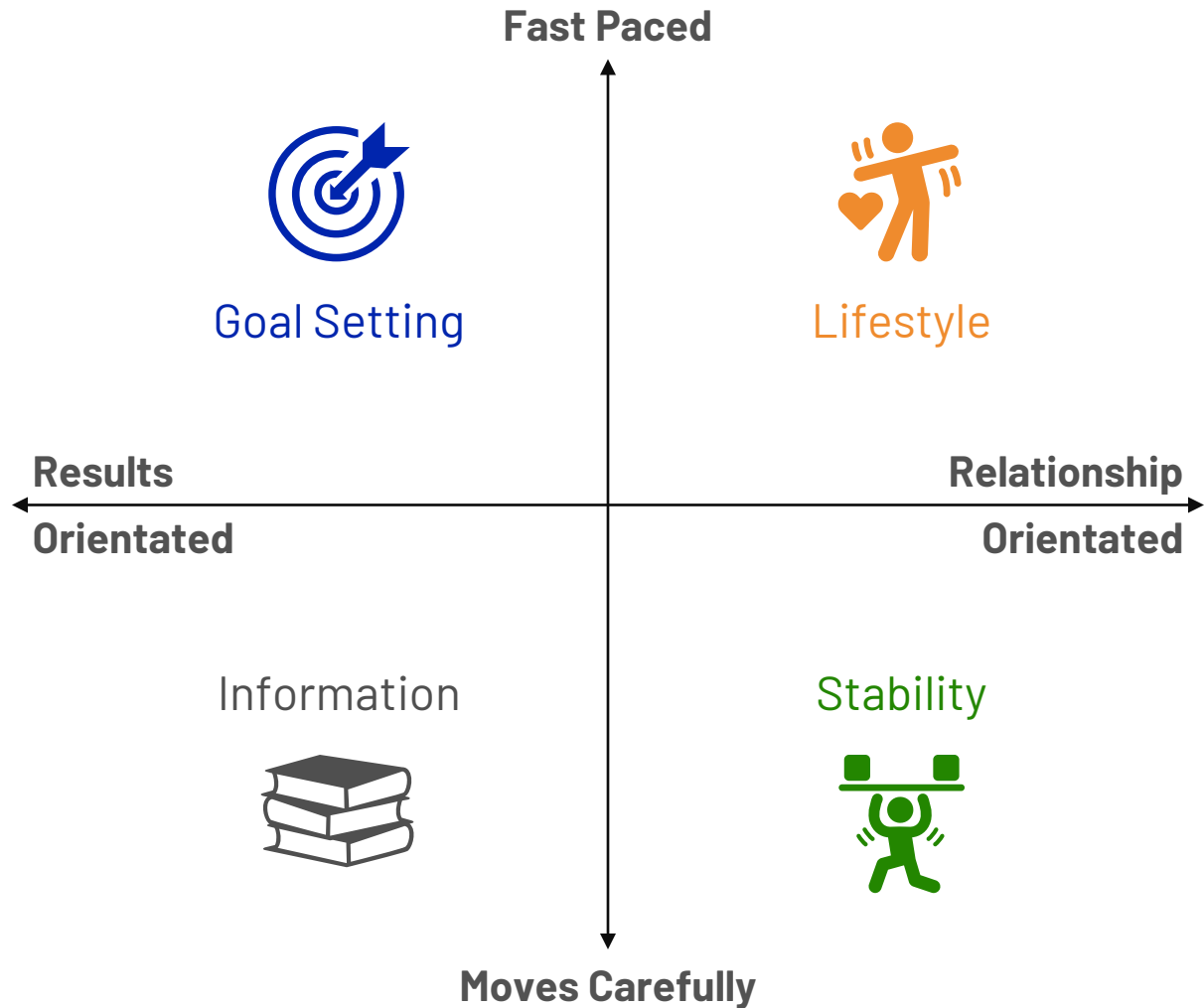
Does this seem familiar?

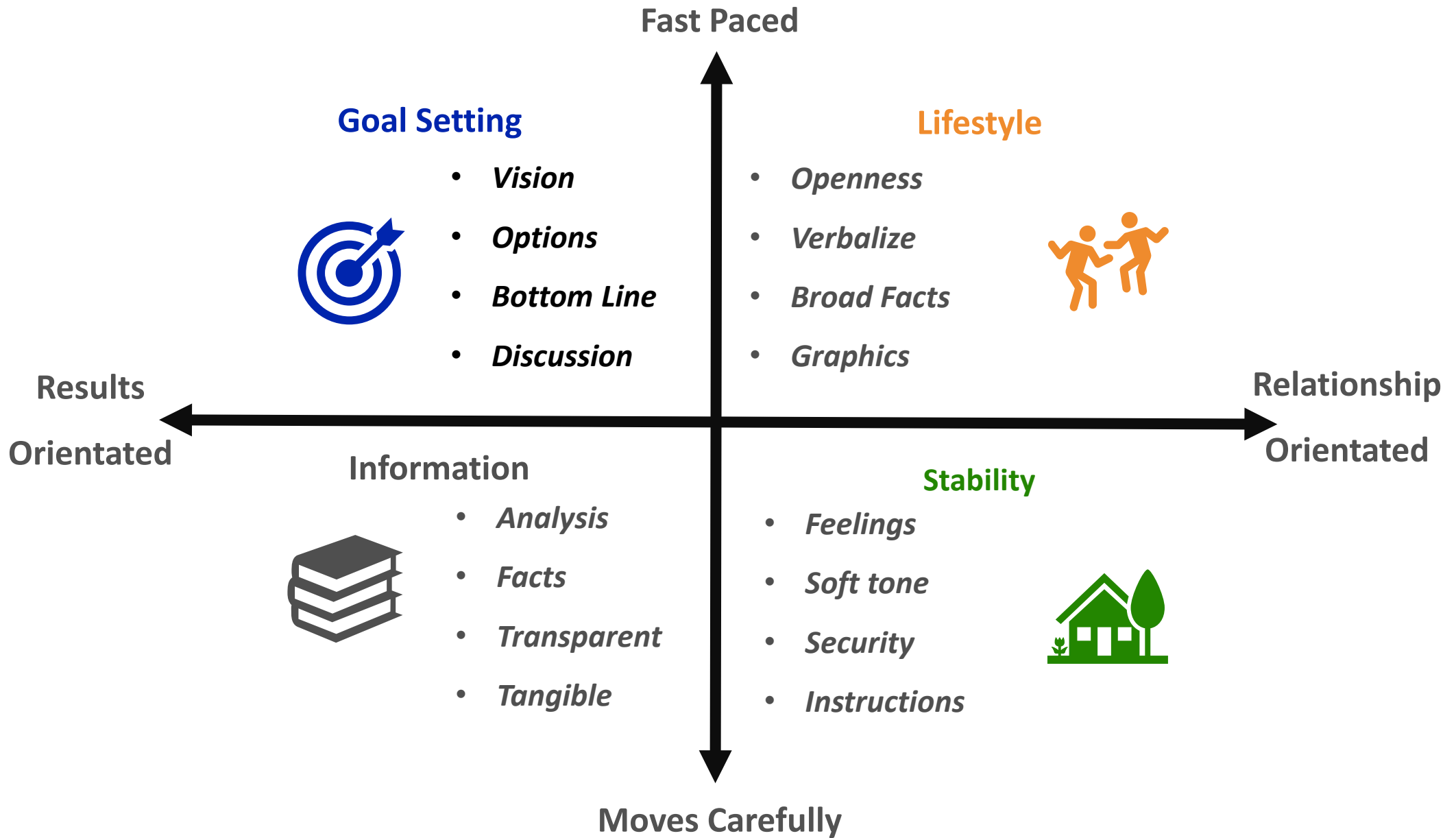


What
Happened?



More On The **Styles**



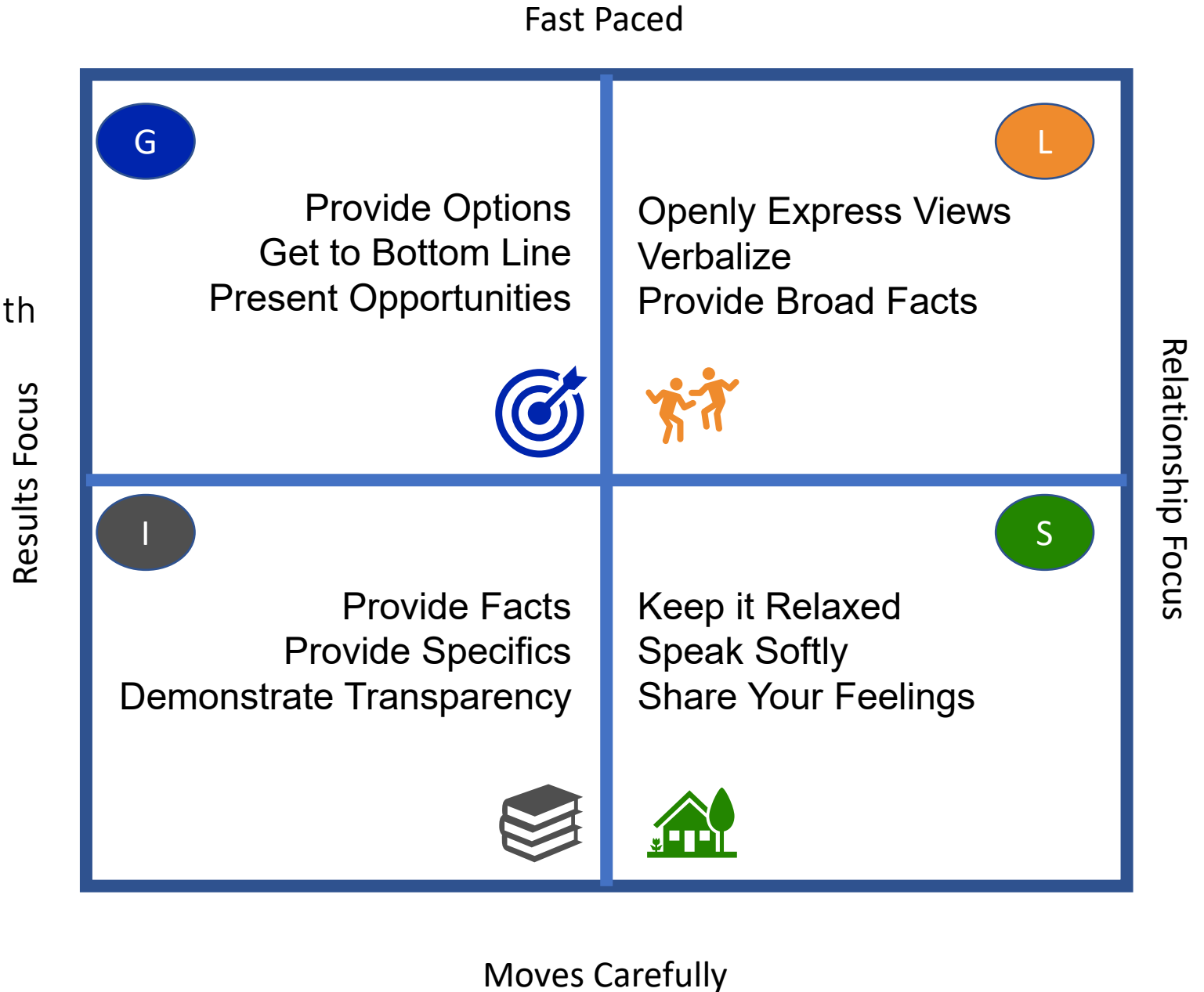


My Primary Communication Style is:

A person I have difficulty communicating with

Their (anticipated) Style:

One thing I can try next is:



Take Your Own Discovery

- Go to to take your own discovery free!
<https://cdna.ridgelinecoaching.com/wim>
- 12 Questions
- Takes about 5 minutes
- Get your customized report right away



Let's Connect..

I'd love to connect with you on LinkedIn

www.linkedin.com/in/ridgelinenikkievans

I share Tuesday Tips every week on LinkedIn

I'm a **Goal Setter**/ **Lifestyle** Communicator
(did you guess?)



Nikki (Heise) Evans, PCC
Behavior Expert | Consultant | Speaker |
People Problem Solver | ICF PCC



Accreditations

MBA, BA Psychology
ICF PCC, DNA Certified Consultant
EMCC ITCA (Individual Team Coaching
Accreditation)

www.ridgelinecoaching.com

The slide features a central title 'Questions and Takeaways' in a large, blue, serif font. Surrounding the title are several circles of varying sizes and shades of blue, each containing a white question mark. One circle on the left is significantly larger and darker than the others. The overall design is clean and professional, with a white background.

Questions and Takeaways

What questions do you have for me?

What is something you are taking away from today?