

WOMEN IN MANUFACTURING
WESTERN PENNSYLVANIA CHAPTER

Meet Our Team



Melissa Vecchi
CHAIR

Melissa is the Vice President of JV Manufacturing, she is an accomplished organizational excellence executive with an extensive and proven track record of working closely with business leaders at all levels, in a variety of industries to build winning cultures, leadership and employee engagement.



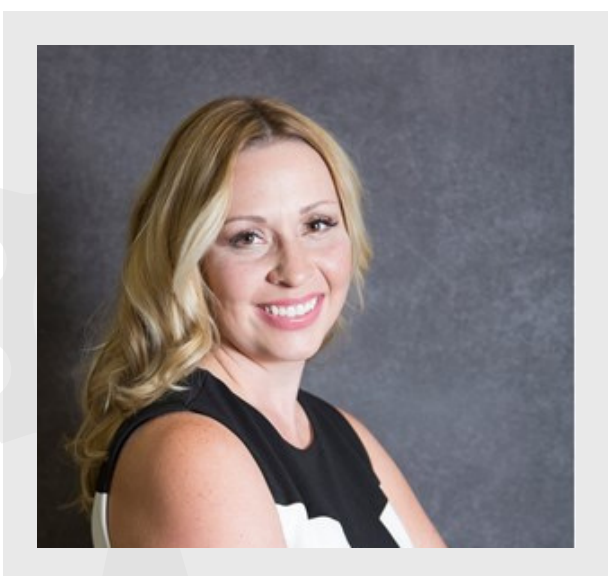
Genna Mucci
VICE CHAIR

Genna is a Project Manager at JV Manufacturing. Throughout her education, she has received her BS in Business Management, Six Sigma Green Belt Certification, and Project Management (PMP) Certification. She is currently pursuing her Master's Degree at Saint Vincent College in their MSMOE program



Kristen Goodell
SECRETARY

Kristen is a staff consultant and education expert within the Organizational Development team at Catalyst Connection. Kristen is a certified educator, officially recognized by the Commonwealth of Pennsylvania. She holds a Master of Science Degree in Education from Johns Hopkins University. Adding depth to her skill set, Kristen is accredited in Crisis Intervention, certified in IDEOU Designing & Activating Strategy, and is a certified facilitator for The Developmental Dimensions Institution.



Kory McCarty
TREASURER

Kory is the President of Filly Fabricating, she is a second-generation, manufacturing industry entrepreneur that possesses over 19 years of diverse business and corporate account management.

TO LEARN MORE VISIT US AT:

[HTTPS://WWW.WOMENINMANUFACTURING.ORG/WESTERN-PENNSYLVANIA](https://www.womeninmanufacturing.org/western-pennsylvania)

Taylor Smith

MARKETING DIRECTOR

Taylor is a Technical Sales and Marketing Specialist at PSENERGY, LLC where she has the opportunity to travel the country helping primary metals processing companies increase throughput and reduce emissions through combustion efficiency. She has a passion for educating the next generation about industry opportunities, and bridging the gap between sales and marketing efforts.



Elena Petrak

COMMUNITY ENGAGEMENT DIRECTOR

Elena is an IPC Certified Trainer, and the Training Coordinator at System One. Right now, her focus is on a project that will provide multiple customer companies training in manufacturing topics across industries and areas of the country. She plays a key role in helping employees become successful at their new companies.



Emily Ondras

MEMBERSHIP & SPONSORSHIP CO-DIRECTOR

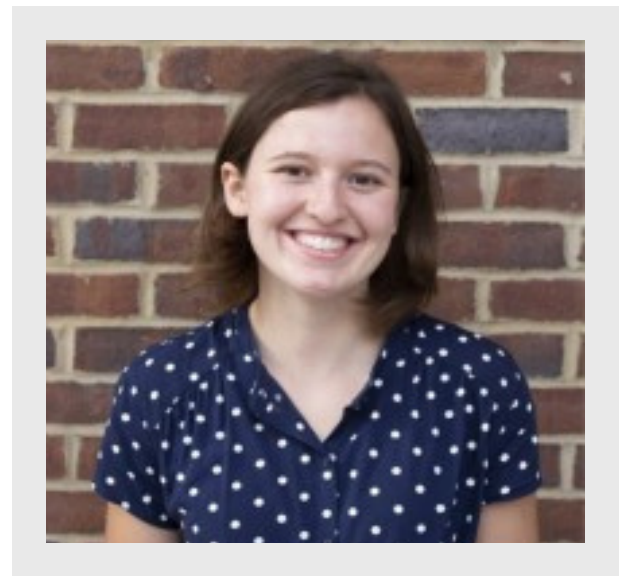
Emily is the Global Procurement Manager at Kurt J. Lesker Company and a day at work could include anything from negotiating contracts with vendors, to process mapping continuous improvement opportunities for our business or ERP system.



Hope Cicero

MEMBERSHIP & SPONSORSHIP CO-DIRECTOR

Hope is a Project Engineer, and a Jack of All Trades at Channellock, Inc., where no day is ever the same! Some days are spent on the production floor enhancing equipment or testing supplies that can help their processes, while other days Hope is designing parts in CAD or doing background work for project implementations.



OUR PURPOSE

THE WOMEN IN MANUFACTURING ASSOCIATION (WIM) STRENGTHENS THE MANUFACTURING SECTOR BY RECRUITING, INSPIRING AND ADVANCING WOMEN IN THE INDUSTRY. AS A 501(C)(6) NON-PROFIT TRADE ASSOCIATION, WIM IS DEDICATED TO SUPPORTING, PROMOTING AND INSPIRING WOMEN WHO HAVE CHOSEN CAREERS IN THE MANUFACTURING INDUSTRY.

