

# WiM CHAPTER LEADER COMMUNITY CHAT

February 8, 2022

wim

women in  
manufacturing®

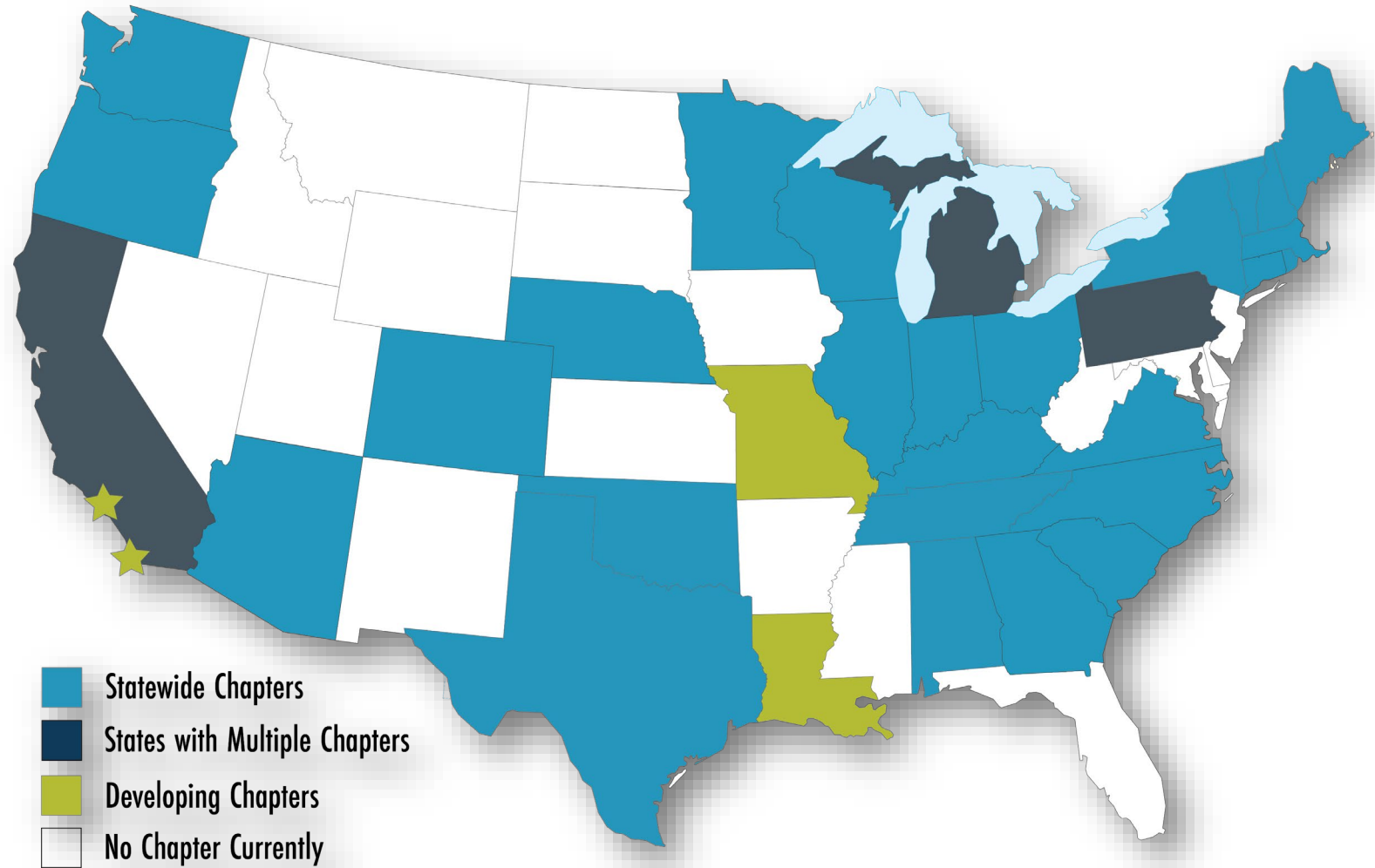


# WELCOME

- WiM National Updates
- Best Practices with **WiM Western Pennsylvania**
- Breakout Rooms
- Closing & **Raffle!**

# CHAPTER UPDATES

- 30 established WiM Chapters
- 178 events since April 1, 2021 (89% to FY21 goal)
- Chapters needing support:
  - Indiana
  - Northern California
  - Arizona
- Chapters in development:
  - Missouri
  - Louisiana
  - Los Angeles
  - San Diego



# CHAPTER LEADER COMMUNITY CHATS

- For WiM Chapter Leaders only, including board and committee members.
- Each Chapter Leader must attend at least four Community Chats annually.
- Each Chapter should have at least one representative at every Community Chat.

DATE & TIME	THEME or TOPIC
Friday, March 4 from 12 – 1 PM ET	Purple for Women’s History Month
Thursday, April 7 from 2 – 3 PM ET	“Florals, For Spring...Groundbreaking...”
Tuesday, May 3 from 3 – 4 PM ET	TBD
Friday, June 3 from 12 – 1 PM ET	TBD
Tuesday, July 12 from 2 – 3 PM ET	TBD
Wednesday, August 10 from 12 – 1 PM ET	Getting ready for SUMMIT 2022!
Thursday, September 8 from 2 – 3 PM ET	TBD
October	SKIP
Tuesday, November 15 from 12 – 1 PM ET	Celebrating 2022 and Goal Setting for 2023
December	SKIP

# CHAPTER COMMUNICATIONS FROM WiM

## ONGOING

### **New Corporate Member Alerts & Local Contact Forms**

- WiM National will alert Chapter Leaders via email when a new corporate member has signed on and the primary contacts are based in their state or region.
- Every new corporate member company will be asked to complete a form that provides WiM Chapters with a local contact for their company or organization.
- Existing corporate members will be asked to complete this form as well.

## MONTHLY

### **Updates from WiM National**

BoD Updates from Allison

Updates on WiM's Sales Pipeline

Social Media and Engagement Campaigns

First or second week of each month.

### **Chapter Community Chats**

First or second week of each month.

### **Financial Transfer File & Membership Roster**

Third or fourth week of each month.

## QUARTERLY

### **Virtual Check-Ins with WiM National**

## ANNUALLY

### **Chapter Leader Workshop at SUMMIT**

### **WiM National Visit**

# MEMBERSHIP UPDATES

**10,861** Current Members

**908** Individual Professionals

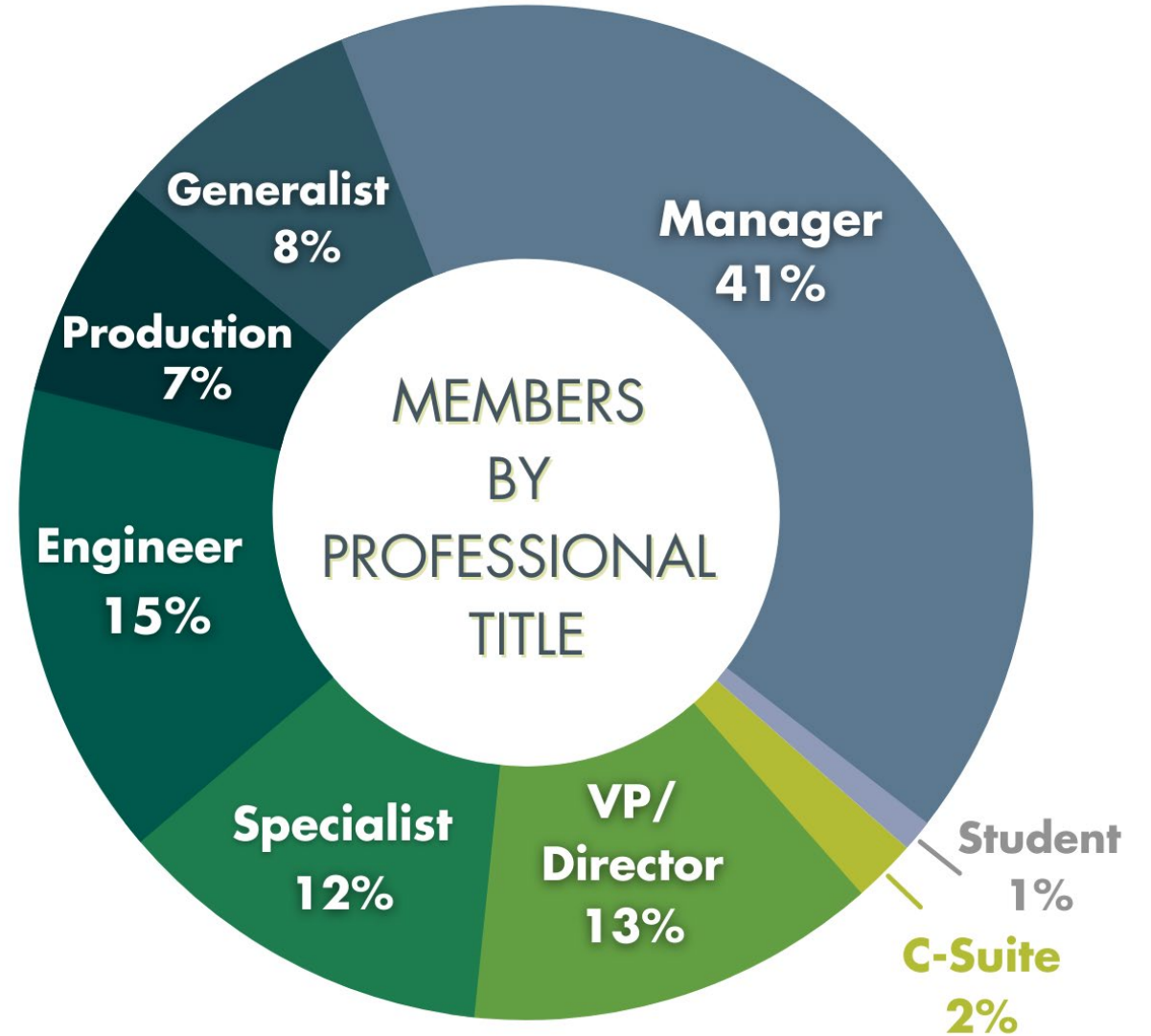
**9,814** Corporate Professionals

**60** Students

**55** Professional PLUS

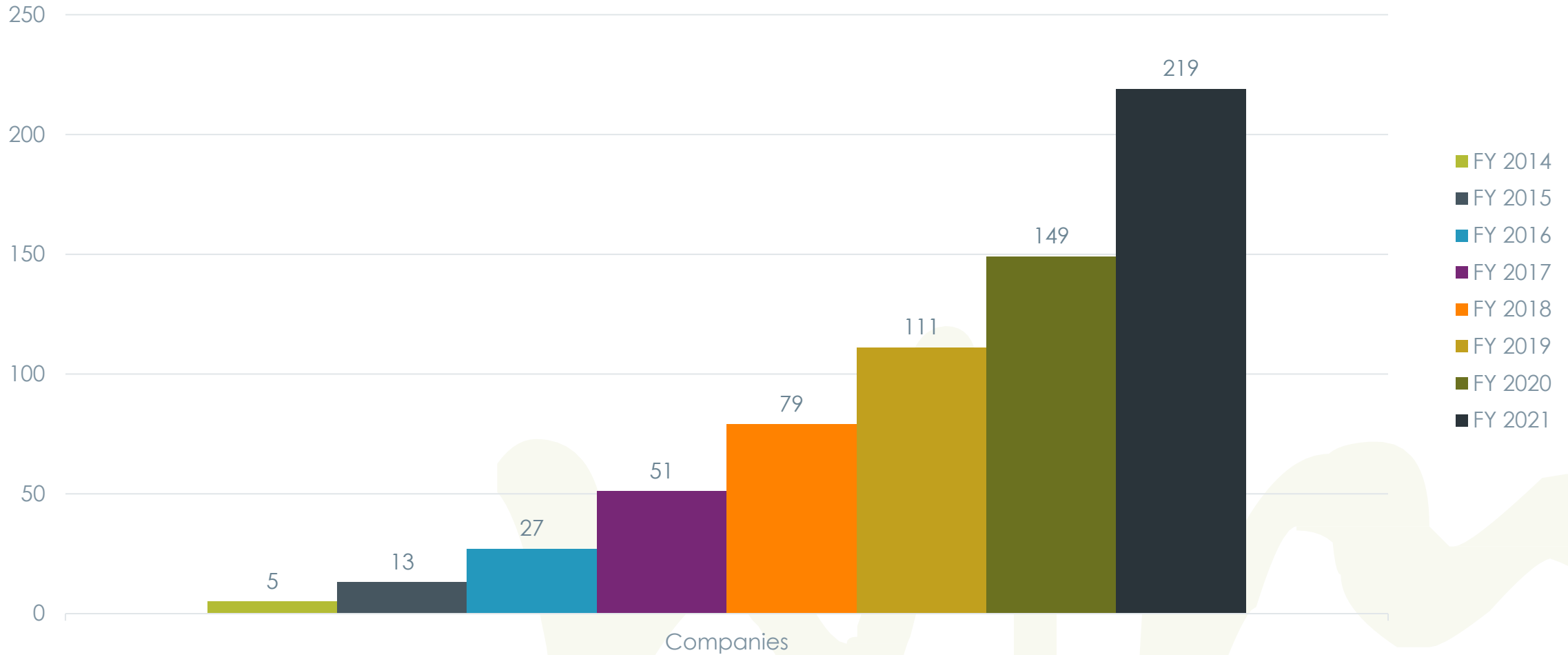
**10** WiM + SME Students

**14** WiM + AME Professionals



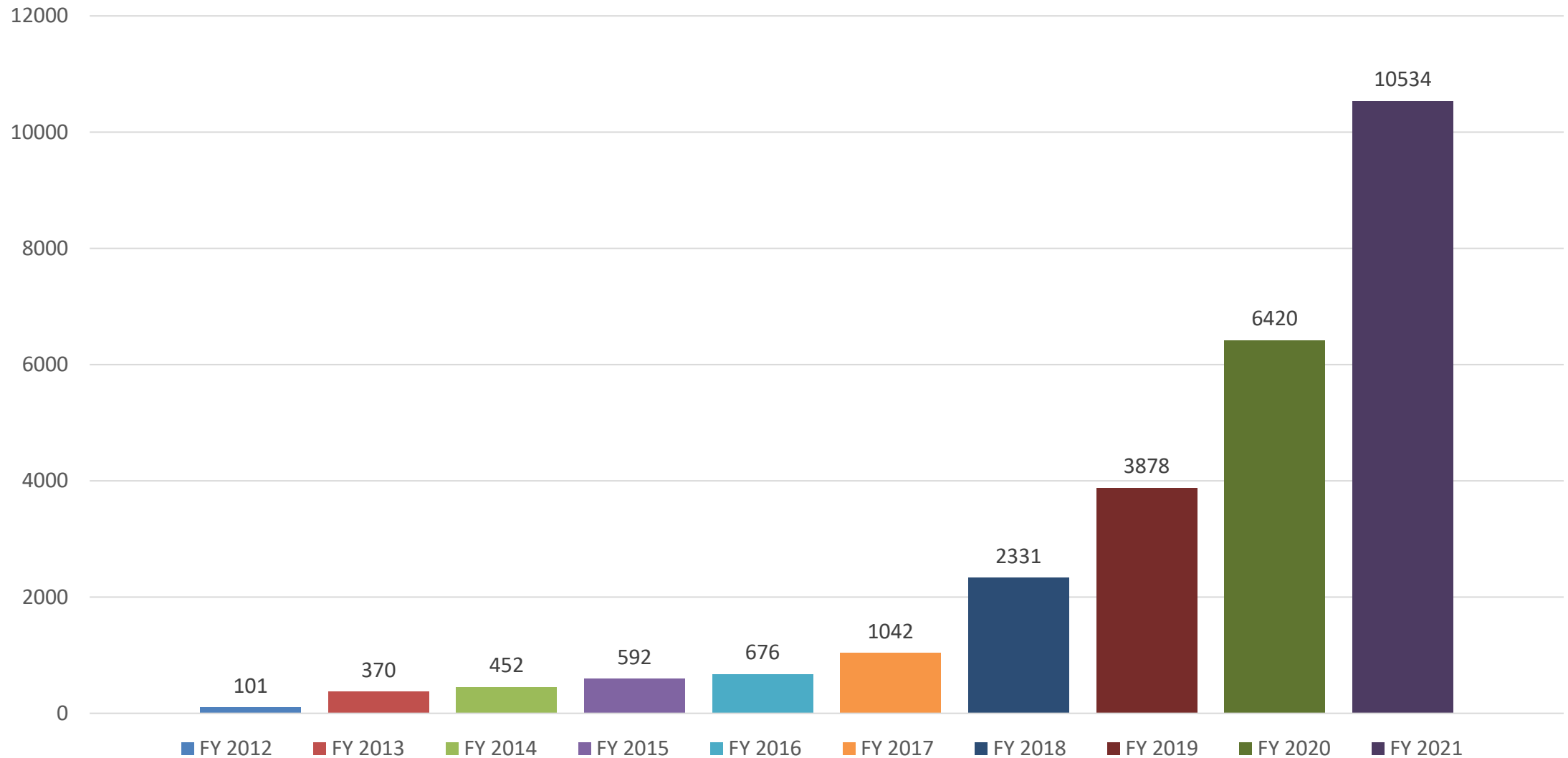
# CORPORATE MEMBERSHIP GROWTH

FY2014 - FY2021 \*as of 12/31/21



# INDIVIDUAL MEMBERSHIP GROWTH

FY2012 - FY2021 \*as of 12/31/21





# NEWEST WIM CORPORATE MEMBERS

*Since January 1, 2022*

<b>Charter Manufacturing</b>	Wisconsin
<b>Dow, Inc</b>	Michigan
<b>Hologic</b>	Massachusetts
<b>Form Energy</b>	Massachusetts
<b>Relativity Space</b>	California
<b>Argent International</b>	Michigan
<b>Augury</b>	New York
<b>Molson Coors</b>	Wisconsin
<b>Argent Tape and Label, Inc.</b>	Michigan
<b>Kymera International</b>	North Carolina
<b>Amgen</b>	Kentucky
<b>Tektronix</b>	Oregon

<b>Salvagnini</b>	Ohio
<b>Steven Douglas Corp. (SDC)</b>	Ohio
<b>Pfizer</b>	New York
<b>Barry Callebaut, USA LLC.</b>	Illinois
<b>Winnebago Industries, Inc.</b>	Minnesota
<b>Phillips Tube Group Inc.</b>	Ohio
<b>Gleason Corporation</b>	New York
<b>GMI Solutions</b>	Wisconsin
<b>Bowery Farming</b>	New York
<b>Siemens</b>	North Carolina
<b>Acuity Insurance</b>	Wisconsin

# UPCOMING WiM EVENTS

WiM Connecticut   Annual Legislative Update	2/9/2022
VLS Webinar   Inclusive & Emotionally Intelligent Leadership	2/9/2022
WiM Massachusetts   Create a Vision Board & Manifest Your Dreams	2/9/2022
WiM Western Pennsylvania   Leadership Boundaries: Protecting Your Time	2/10/2022
WiM Eastern Pennsylvania   OneHope Virtual Wine Tasting	2/10/2022
WiM Wisconsin   Speed Networking	2/10/2022
Management Development Program 2022	2/14/2022
WiM New York   Having a Mantra & Elevating Your New Year	2/16/2022
WiM Colorado   Barber-Nichols Plant Tour	2/17/2022
WiM Georgia   Win-Tech Tour & Lunch	2/17/2022
WiM Texas   Set Your Vision for 2022: Creating Your Digital Vision Board	2/17/2022
Coalition for Women in Industry	2/21/2022
Registered Apprenticeship Best Practices Webinar	2/22/2022
WiM Kentucky   Developing Your Personal Brand with Kandice Cohen	2/22/2022
WiM Western Michigan   Indoor Golf Clinic	2/22/2022
WiM Ohio   Supply Chain on Fire - Are You Running or Fighting?	2/23/2022
WiM Central Pennsylvania   Plant Tour at Utz Chips in Hanover	2/23/2022
WiM Illinois   Rosie Readers Monthly Book Club   February 2022	2/24/2022

# NAVIGATING WHAT'S NEXT



March 7 - 8, 2022 | Seattle, WA & Virtual

## ATTENDANCE:

**52** registered in-person (goal of 105)

**32** registered virtual (goal of 20)



## SPONSORS:

- Moss Adams
- Bank of America
- Kia
- RSM
- Bolder Co
- SpaceX
- IMPACT Washington
- Tesla
- Principal

## SPEAKERS AND ATTENDEES FROM:

- Amazon
- SpaceX
- California Manufacturers and Technology Association
- Oregon Manufacturing Extension Program
- Panasonic IIoT Solutions
- Washington State Department of Commerce
- Leo Stella

# THANK YOU!



# UPCOMING CAMPAIGNS

## Women in Manufacturing Week | March 6 – 12

Digital campaign (website & social media) to promote women in manufacturing careers and ways to celebrate International Women's Day (March 8) and Women's History Month with WiM. Throughout the week of March 6 to March 12, WiM will feature members and inductees to our Hall of Fame with a campaign on all social media platforms. We will also feature events from WiM Corporate members and WiM Chapters taking place that week and throughout the month of March, on social media, on the WiM website and blog, and in our Weekly newsletters.

### Campaign Goals:

- Highlight notable women in manufacturing careers from the WiM community.
- Provide our audience with opportunities to celebrate IWD and WHM with WiM and our members.
- Expand social media audience of WiM and our Chapters.

**#womeninMFGweek**



Chapter events held March 6 – 12 will be featured on  
WiM National social media channels!

**Deadline to submit events: Friday, February 25**

**COMING SOON:**

Logos and graphics

Sample social media messaging



# RECENT CHAPTER EVENTS

*Members attend a WiM Connecticut tour a Wepeco Plastics in Middlefield, CT on October 14, 2021.*



*The WiM Washington Chapter hosts a tour and tasting at Theo Chocolate in Seattle, WA on December 7, 2021.*





# RECENT CHAPTER EVENTS

*The WiM Western Michigan Chapter hosted a holiday celebration on December 7, 2021 in Grand Rapids, MI.*



## **MOST REVENUE:**

- **WiM Illinois** | Holiday Lunch & Book Drive
- **WiM Connecticut** | Celebrate the Holidays with WiM CT & Robinson+Cole

## **MOST REGISTRANTS:**

- **WiM Texas** | Leveling Up in Your Career – Working on It, Not Just in It
- **WiM Ohio** | New Year, New You: Branding in 2022

## **SPECIAL SHOUT OUTS**

- **WiM Ohio** | Apprenticeship: Not Just for the Trades
- **WiM Eastern Pennsylvania** | OneHope Virtual Wine Tasting

# CHAPTER BEST PRACTICES WITH WiM WESTERN PENNSYLVANIA



women in  
manufacturing®



# BREAKOUT ROOMS!

wim

women in  
manufacturing®





# COMING SOON

- Quarterly **IMPACT** newsletter
- **Chapter Resource Hub** Updates
- 2022-2023 **Chapter Leader Agreements**
- Feedback **survey** & Registration links for future Chapter Leader Community Chats

# THANK YOU!



**Audrey Imes**

Chapter Relations & Development Manager

[aimes@womeninmfg.org](mailto:aimes@womeninmfg.org)



women in  
manufacturing®