



WISCONSIN  
CHEESE MAKERS  
ASSOCIATION  
EST. 1891

## WCMA Cheese Industry Supplier Student Scholarship

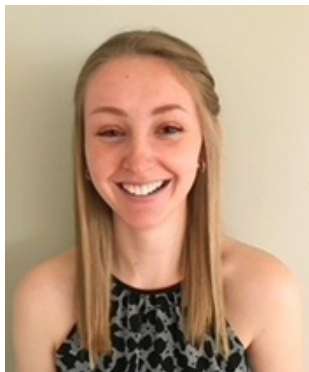
Wisconsin Cheese Makers Association (WCMA) proudly announces it will again offer three scholarship awards, worth \$3,000 each, to students connected to its supplier member companies.

WCMA wishes to encourage and assist our next generation of cheese industry leaders. Any employee, or a child of an employee, at a WCMA member supplier company can apply for this scholarship.

Applications must be returned to WCMA by Wednesday, February 17, 2021. The winning applicants will be announced in March.

The scholarship is open to students attending any college, university, or technical school in the United States. It is also open to high school seniors registered to attend a qualifying school. Applicants must supply a current transcript, a letter of recommendation and a completed application form. Priority will be given to students emphasizing studies that may lead to a career in the food and dairy supply industry.

If you have any questions regarding the WCMA Cheese Industry Supplier Scholarship, contact WCMA's Office and Member Service Manager Sara Schmidt at 1-608-217-2181 or email [sschmidt@wischeesemakers.org](mailto:sschmidt@wischeesemakers.org).



2020 Scholarship Winners



WISCONSIN  
CHEESE MAKERS  
ASSOCIATION  
EST. 1891

# 2021 WCMA Cheese Industry Supplier Student Scholarship

**Return this application by February 17, 2021:**

**By Email:**

Sara Schmidt  
sschmidt@wischeesemakers.org

**By Mail:**

Scholarship Program  
Wisconsin Cheese Makers Association  
5117 West Terrace Drive, Suite 402  
Madison, WI 53718

***A completed application includes: an application form, an official student transcript, and a letter of recommendation from a teacher, advisor, or employer.***

## I. Contact Information

Applicant Name: \_\_\_\_\_  
Current Address: \_\_\_\_\_  
City, State, Zip: \_\_\_\_\_  
Phone: \_\_\_\_\_  
Email: \_\_\_\_\_

Parent's Name(s): \_\_\_\_\_  
Address: \_\_\_\_\_  
City, State, Zip: \_\_\_\_\_  
Phone: \_\_\_\_\_

## II. Eligibility

Describe your connection to Wisconsin Cheese Makers Association. (You or one of your parents must be employed at a WCMA member company to apply.)

List the name and location of the school you are attending. (If in high school, list your current school and the college that has accepted your enrollment.)

Degree and major you are pursuing: \_\_\_\_\_

Current Credits Completed: \_\_\_\_\_

Current Cumulative GPA: \_\_\_\_\_

Current GPA in major: \_\_\_\_\_

Total credits needed for graduation: \_\_\_\_\_

Planned graduation date: \_\_\_\_\_

**If more space is needed for responses, it is acceptable to create another document to supplement the application questions. Please note, the length of your response is less important than the content.**

### **III. Career Plans**

What are your career plans after graduation from college or technical school?

### **IV. Activities, Honors**

Please list your current or recent activities (clubs, organizations, volunteer or civic involvement). Explain the activities and your participation in them.

List honors or awards you have been given through school, activities, or in the workplace.

Provide information on previous work experience or internships: (please note job title, employer, dates of employment, duties)

Thank you for your interest in the WCMA Cheese Industry Supplier Student Scholarship.