

TOGETHER, WE'RE BUILDING EXCELLENCE



WCMA | 05.09.2023



**WISCONSIN
CHEESE MAKERS
ASSOCIATION**
EST. 1891

AGENDA

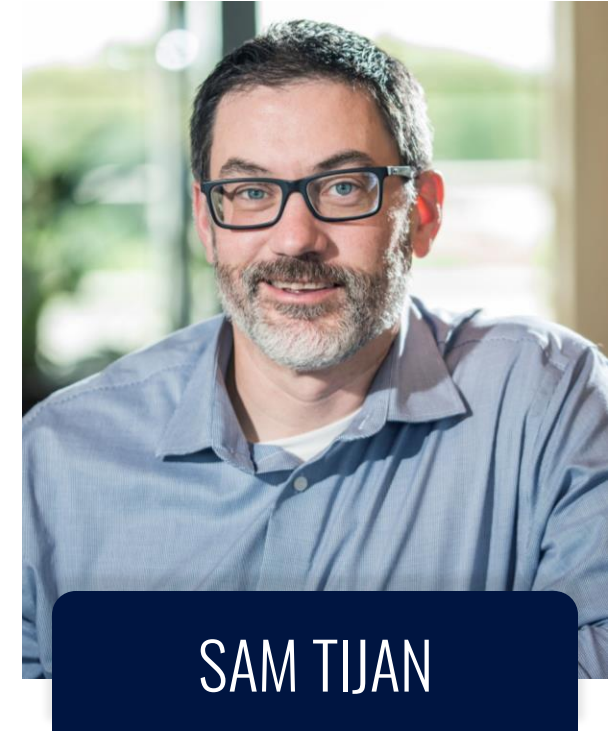
1 | PRECAST NON-CORE-
ZONE PENETRATIONS

2 | FIELD INSTALLATION
VERIFICATION

3 | Q&A



Vice President, Business
Development, Food & Beverage



Senior Virtual
Construction Specialist

PRECAST NON-CORE-ZONE PENETRATIONS

PREVIOUS PROCESS



Utilize designated core-zones in precast



Lengthy process to review and approve non-core-zone penetrations

PREVIOUS PROCESS

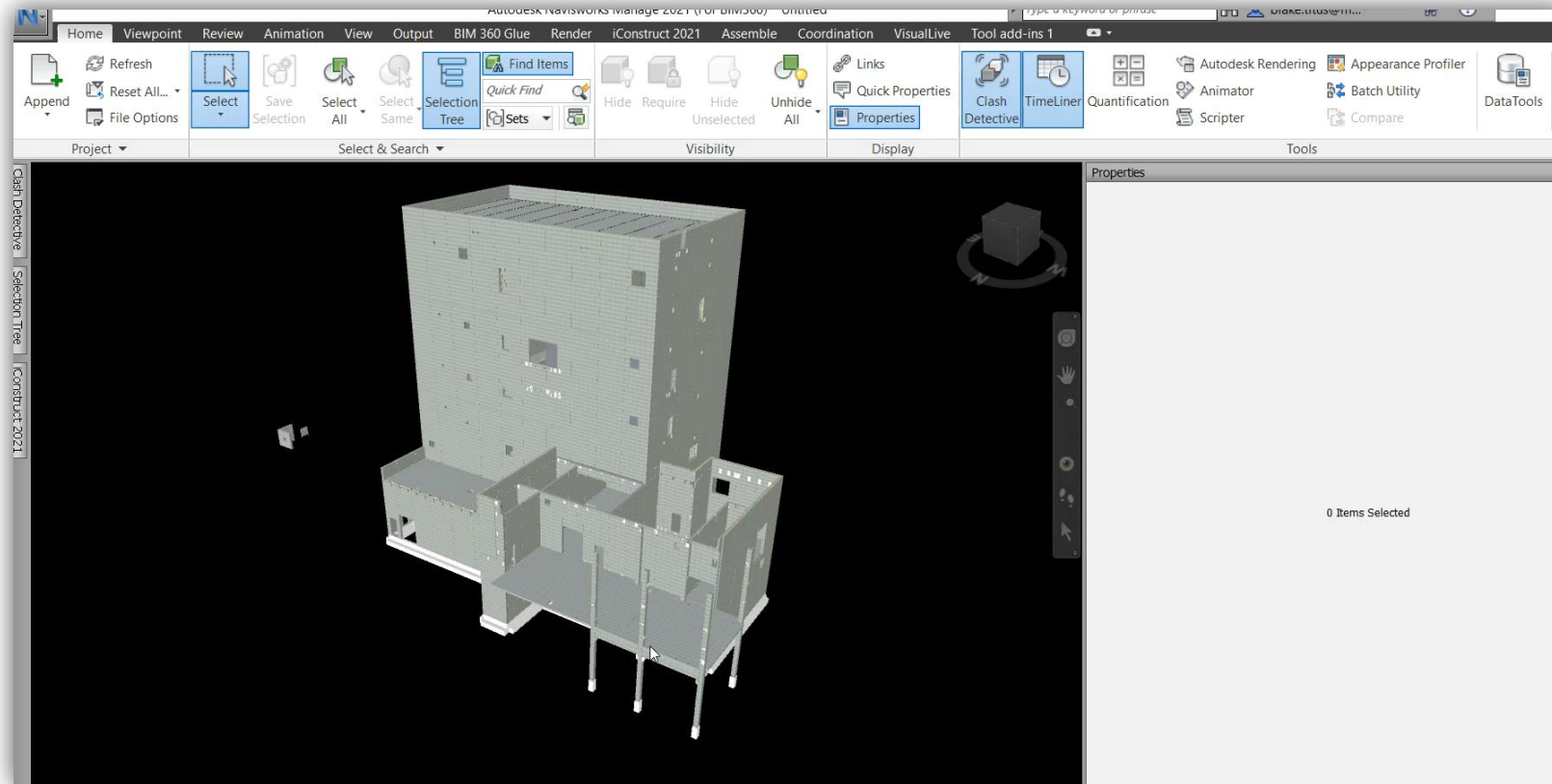
RFI Log



PRECAST NON-CORE-ZONE PENETRATIONS

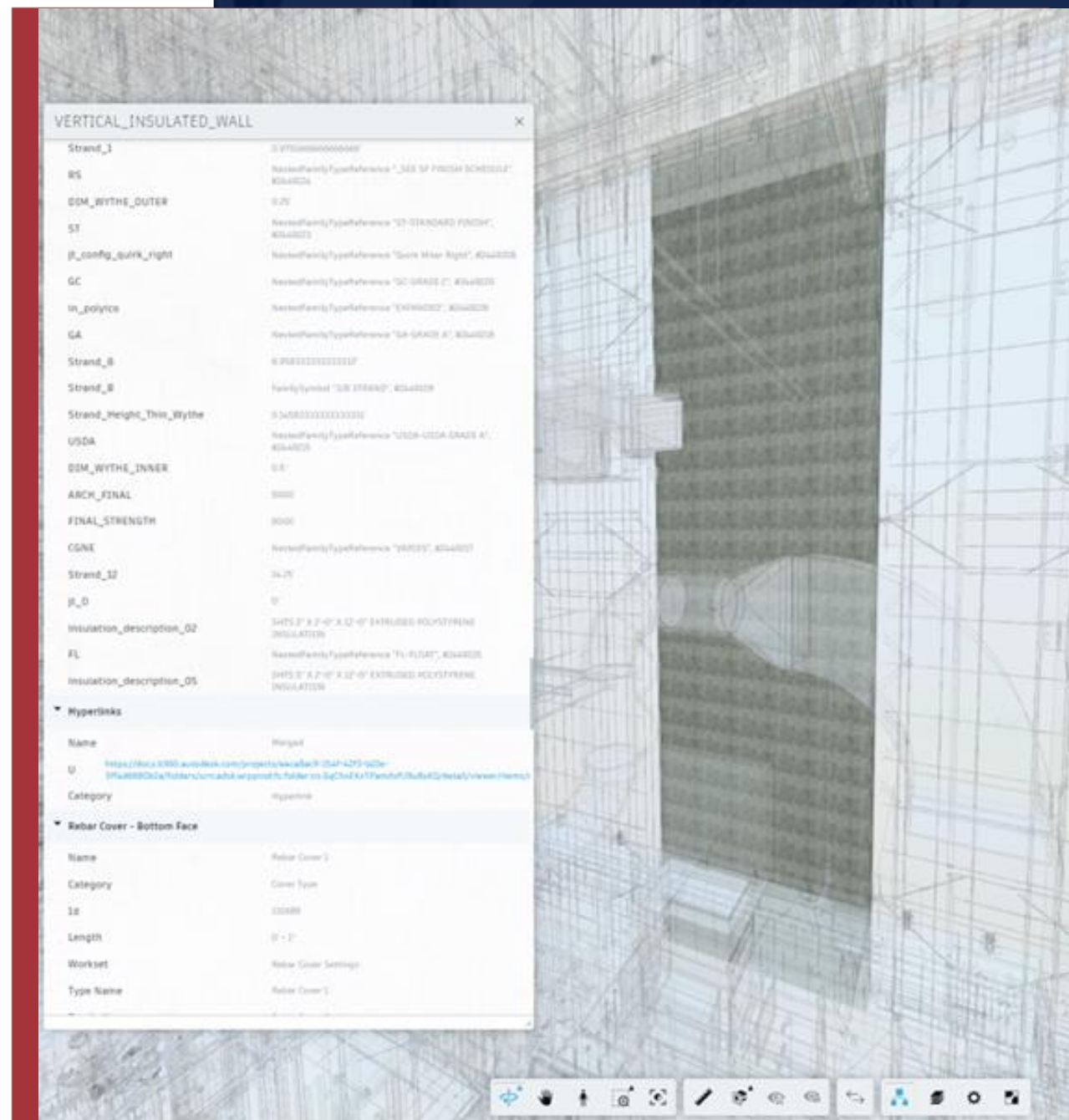
SOLUTION

- Detailed pour drawings from precast supplier
- Provide link to pour drawings for trade partners to easily reference during coordination



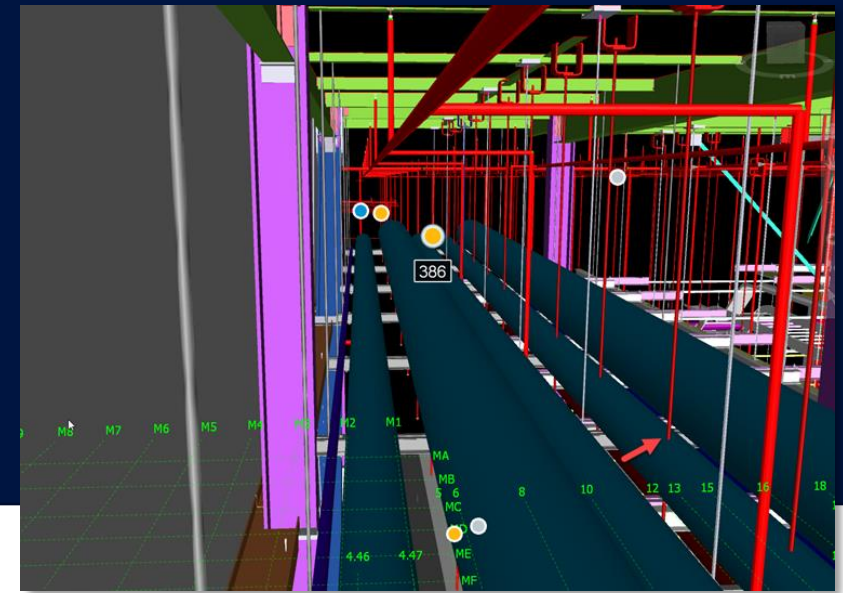
BENEFITS

- Identify feasible locations for penetrations
- Reduce number of RFI's
- RFI return time was reduced to a day or two

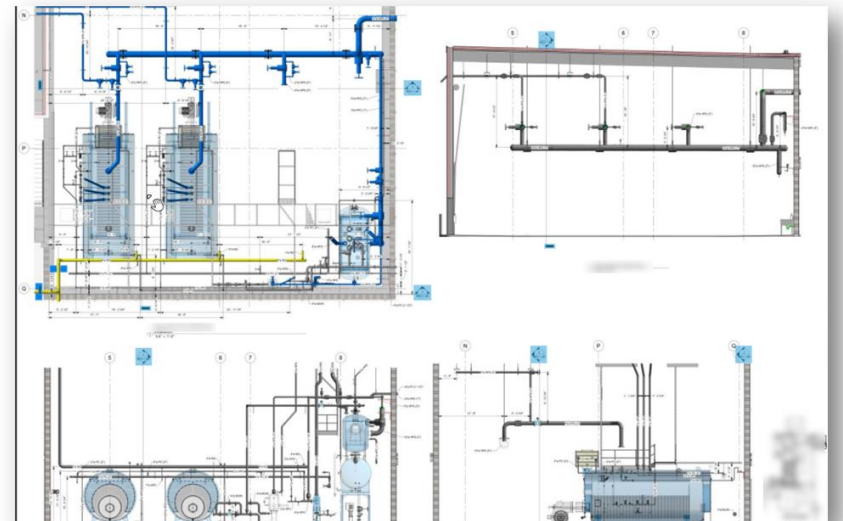


FIELD INSTALLATION VERIFICATION

CURRENT PROCESS



Visual or field measure when discrepancies seem apparent

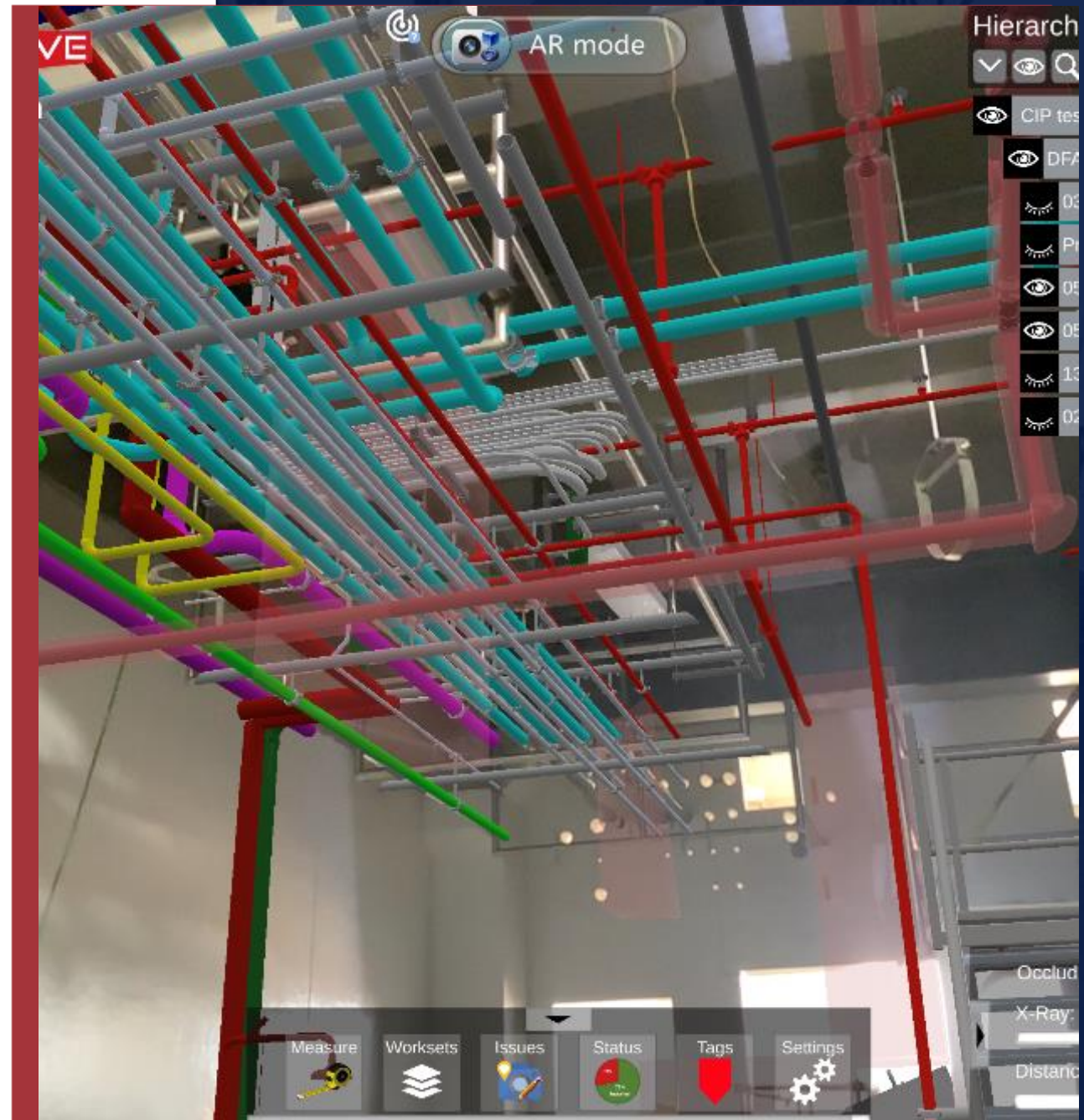
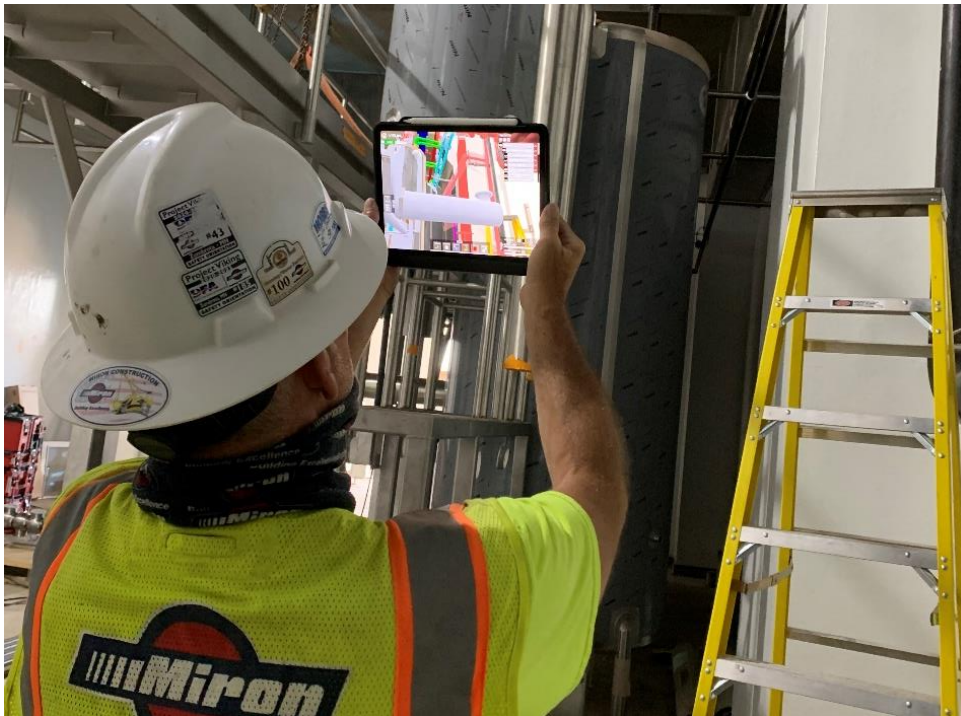


Reference 2D installation drawings

FIELD INSTALLATION VERIFICATION

SOLUTION

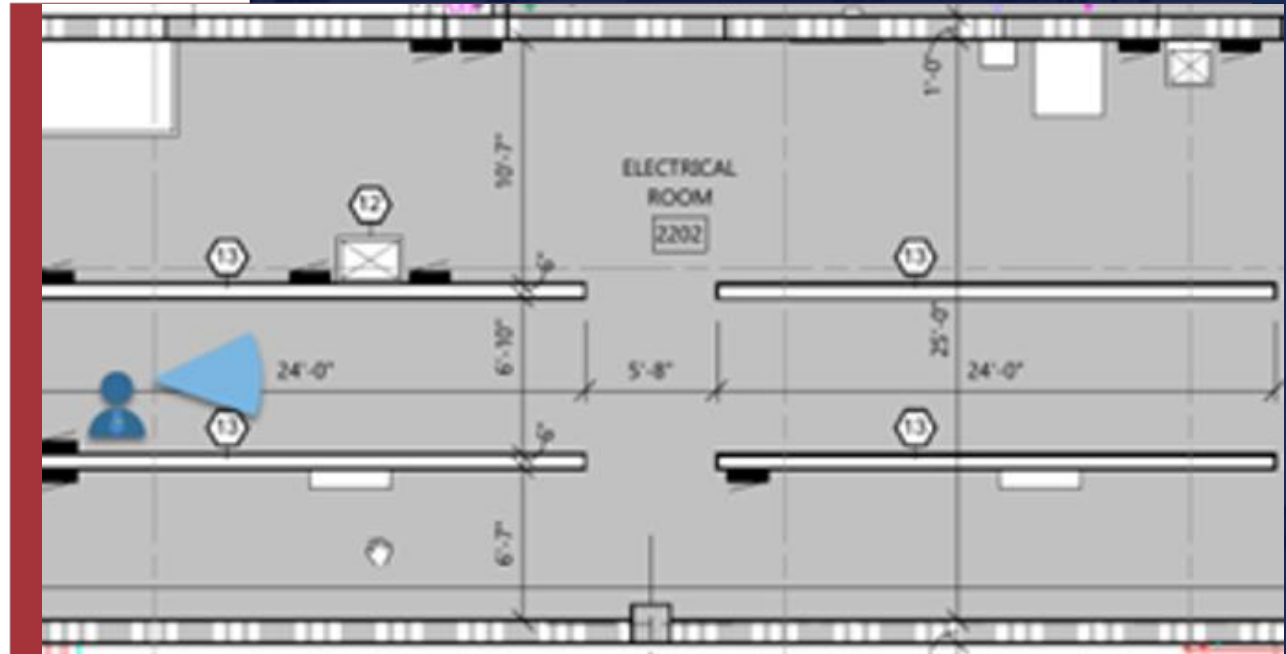
- Utilize Augmented Reality
- Check for built environment alignment with coordinated model

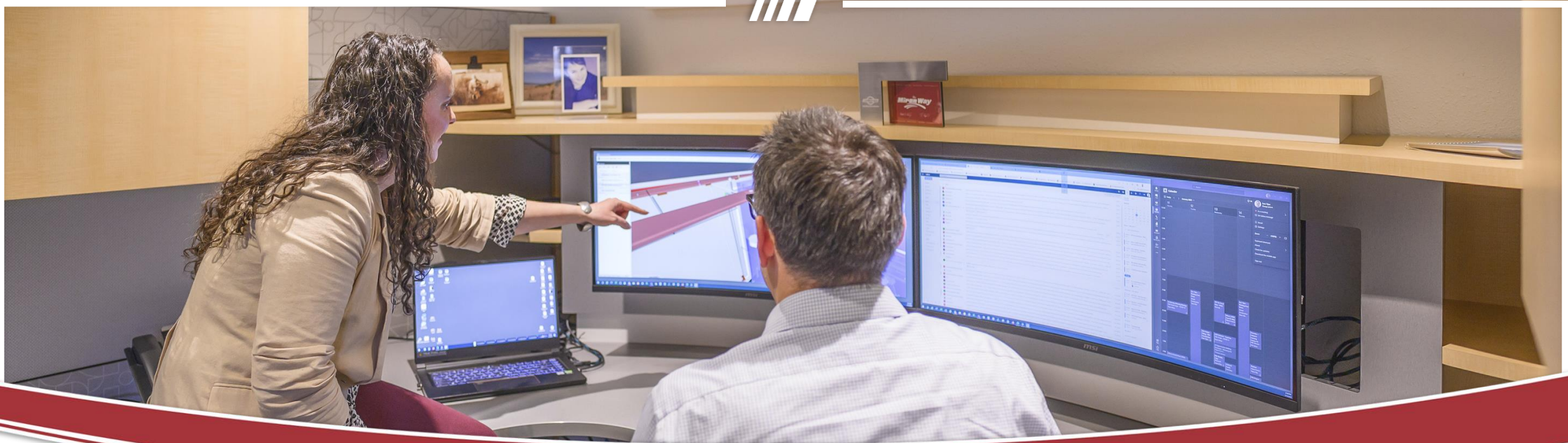


FIELD INSTALLATION VERIFICATION

BENEFITS

- Identify who is responsible for discrepancy in the field
- Reduce the verification time, field discussions, and meetings
- Added benefit of visualization in BIM coordination for the entire project team





THANK YOU!
