



# WCMA NEWS

AN EXCLUSIVE UPDATE FOR MEMBERS OF THE  
WISCONSIN CHEESE MAKERS ASSOCIATION



## WCMA SIGNATURE EVENTS



### Register Now for WCMA Annual Member Meeting

WCMA invites **designated key contacts** at our member organizations, or one proxy representative, to join an exclusive in-person opportunity to network and learn the latest updates at the **WCMA Annual Member Meeting**, set for Wednesday, May 25 at the Osthoff Resort in Elkhart Lake, Wisconsin.

Registration and networking begin at 11:30 a.m. (CT). The meeting will open at noon with a luncheon and keynote guest speaker Chad Vincent, Chief Executive Officer at Dairy Farmers of Wisconsin. Following lunch, members will recognize legislative leaders who have advanced dairy opportunities, then hear details on WCMA activities and plans for the coming fiscal year. The meeting will conclude at 2:00 p.m. (CT).

Register on the **WCMA website** for this exclusive member networking and education opportunity. Participants in WCMA's Membership and Supplier Committees, meeting in person at the Osthoff on May 25, are also invited to attend. All other WCMA members may **register** to watch the meeting live online. Attendance in person is \$75 and online participation is \$25.

Members are also invited to sponsor the event at the \$500 level, earning one free registration, signage, and recognition at the meeting and in advance notices. Sponsorship deadline is May 6.

For more information, contact **WCMA Executive Director John Umhoefer**.

**REGISTER NOW**



## Save the Date for WCMA's Annual Golf Outing & Trap Shoot



Plan to join friends and colleagues at the [2022 WCMA Golf Outing & Trap Shoot](#), scheduled for Wednesday, July 20. Registration for this popular event will open on Tuesday, May 17 and will fill quickly, so mark your calendar now! More information, including sponsorship details, will be released in early May.

### INDUSTRY UPDATES

## USDA Shares New Vendor Resources

The U.S. Department of Agriculture (USDA) has posted two new resources in its [GS1 Global Data Synchronization Network](#) for vendors in the USDA Foods program. More information is available on [USDA's website](#).

### IN THE NEWS

#### Wisconsin

- *Fox Business*: [Dairy farms decline 64 percent in 20 years with shift to bigger, commercial operations](#) (Featuring WCMA member Crave Brothers Farmstead Cheese)
- *WISN-TV*: [Agriculture economist: Continued climate change will be challenge for dairy farms](#)
- *La Crosse Tribune*: [Westby Cooperative Creamery is a longtime maker of dairy products](#) (Featuring WCMA member Westby Cooperative Creamery)
- *Wisconsin State Journal*: [Pay dirt in Paoli: Creamery building gets new life; small farmers, cheese company get boost](#)
- *Milwaukee Journal Sentinel*: [A glance at Blakesville Creamery, where goats and cheese go together](#)

#### National/International

- *Olean Times Herald*: [Great Lakes Cheese to break ground for Franklinville](#)

**plant April 28** (Featuring WCMA member Great Lakes Cheese)

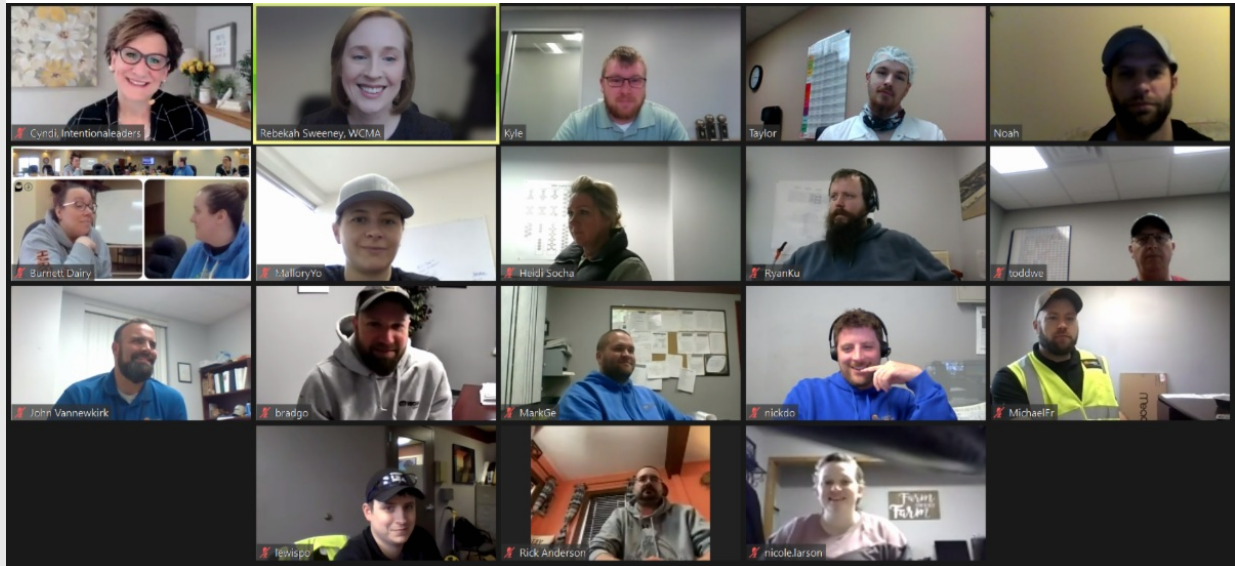
- *Dodge City Daily Globe*: **City prepares plat for Hilmar Cheese** (Featuring WCMA member Hilmar Cheese)
- *Dairy Herd Management*: **A push by Vilsack to make USMCA a true victory for U.S. dairy**
- *Dairy Herd Management*: **Milk prices down double digits**
- *Dairy Processing*: **Arla Foods, DSM set forth plan to reduce methane emissions** (Featuring WCMA members Arla Foods and DSM Food Specialties)



## Social Media Spotlight: Foremost Farms USA Reduces Water Use by 12 Percent

WCMA applauds member Foremost Farms USA for **taking steps** to mitigate its environmental impact in 2021. The company's efforts resulted in a 12 percent reduction in water use across its network of plants, as detailed in a recent social media post to celebrate Earth Day.

## EDUCATION



## Kudos to WCMA Front-Line Leaders

Our thanks go to WCMA member employees from Baker Cheese, Burnett Dairy, Grande Cheese, Mosaic Meadows - LaClare Family Creamery, Wapsie Valley Creamery, and WOW Logistics for their engagement and enthusiasm in our Front-Line Leadership - Part A class, held Monday, April 25. In this training, participants evaluated themselves as leaders, and learned new skills to communicate effectively, manage their stress and motivate their team.

Learn more about WCMA leadership training courses at [WisCheeseMakers.org](https://www.wischeesemakers.org).



# WCMA Webinar

## *Grants for Growth: How to Find and Apply for Federal and State Funding*

### **New Date: Join WCMA May 17 Webinar for Tips to Find and Apply for State and Federal Grants**

WCMA's [next free, member-only webinar](#) has a new date! Join us on Tuesday, May 17 at 1:00 p.m. (CT) for practical strategies on finding and applying for federal and state grant funding. This webinar will feature Wisconsin Department of Agriculture, Trade and Consumer Protection Grants Specialist Ryan Dunn and Center for Dairy Research TURBO Manager Vic Grassman.

This offering is the latest in WCMA's [monthly webinar series](#). Webinar topics are driven by WCMA member feedback and cover a range of themes such as business development, communication strategies, and industry resources.

Have an idea for a future webinar topic? Please contact [WCMA Senior Director of Programs & Policy Rebekah Sweeney](#).

**SIGN UP TODAY**

---

## **Additional Industry Training Opportunities**

WCMA is pleased to share opportunities for industry-specific training and enrichment. Here's a look at other trainings hosted by our partners:

- May 2-4: [FSPCA Preventive Controls for Human Food \(PCQI\) Training](#) - Dairy Farmers of Wisconsin
- May 9-13: [Advanced Cheese Technology - In Person](#) - Center for Dairy Research
- May 12-13: [Internal Auditing \(Virtual\)](#) - Mérieux NutriSciences
- May 18: [Cheesemaking Fundamentals - Online, Self-Study](#) - Center for Dairy Research
- June 14-16: [Advanced Buttermaking - In Person](#) - Center for Dairy Research
- June 14-15: [Environmental Monitoring Hands-On Training Workshop \(In Person\)](#) - Mérieux NutriSciences
- June 20-24: [Buttermakers License Apprenticeship - In Person](#) - Center for Dairy Research
- June 21-23: [FSPCA Preventive Controls for Human Food \(PCQI\)](#) - Mérieux NutriSciences
- Rolling Admission: [Online HACCP Training](#) - North Carolina State University
- Rolling Admission: [Environmental Monitoring in the Dairy Industry](#) - North Carolina State University
- Rolling Admission: [Preventive Controls for Dairy Processors](#) - North Carolina State University
- Rolling Admission: [Food Safety Basics For Artisan Cheesemakers](#) - North Carolina State University

---

**MEMBERSHIP**

# Together We Grow: WCMA Celebrates Member Employee Growth and Advancement

WCMA members know that growth involves more than product sales. A focus on the potential, satisfaction, and development of team members helps build a foundation for long-term success. That's why WCMA is pleased to celebrate the many opportunities for collaborative employee advancement in dairy processing through our newest social media campaign: Together We Grow.



# *Together*

# WE GROW



This week, we're pleased to feature the team at Marieke Gouda. As Human Resources Manager Kelly Green shares, "WCMA has helped keep us informed about any changes to food safety regulations. We're also very excited about WCMA's student scholarships and the continuing education offered to cheesemakers like our Production Manager and Cheesemaker Martha Herrera (*pictured here*)."

Follow along on [Facebook](#), [Twitter](#), and [LinkedIn](#) each week for more inspiring stories of growth from WCMA members!

---

# WELCOME



*NEW WCMA MEMBERS!*

## Dairy Industry Suppliers



New WCMA supplier member [August Winter & Sons, Inc.](#) is a mechanical contractor and fabricator offering HVAC, plumbing, and other services.



New WCMA supplier member [Flexopack USA Inc.](#) is a flexible packaging manufacturer with an emphasis in co-extrusion of barrier and non-barrier films.



New WCMA supplier member [Interpak LLC](#) offers packaging and palletizing solutions ranging from single machines to complete systems.

***Rambo, Inc.***

New WCMA supplier member Rambo, Inc. is a food ingredient consulting company.



New WCMA supplier member [RSP Design](#) offers engineering, design, and project management services with a focus on milk and whey processing.



New WCMA supplier member [Scholle IPN](#) engineers barrier films, ergonomic fitments, and filling equipment for a variety of industries.



New WCMA supplier member [SVF Flow Controls](#) offers a full range of engineered valves, actuators, and controls for unique applications.

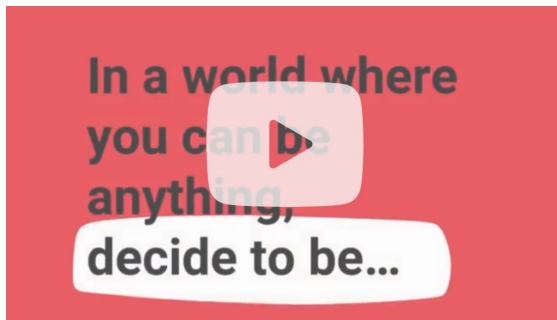
***Translation Services LTD***

New WCMA supplier member [Translation Services LTD](#) provides translation, consulting, and publishing services.



New WCMA supplier member [Victaulic](#) produces mechanical pipe couplings for multiple industrial and commercial applications.

## Workforce Strategies Spotlight: Saputo Dairy USA Tackles Unconscious Biases with Training

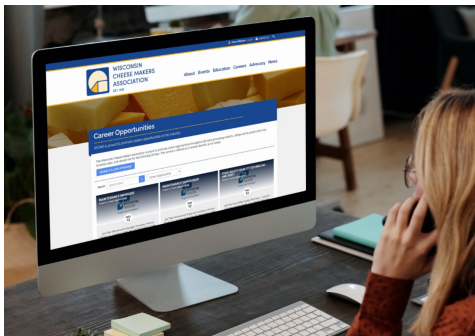


In this week's Workforce Strategies Spotlight, WCMA is pleased to salute Saputo Dairy USA for its [diversity, equity, and inclusion](#) efforts. Striving to provide its employees around the globe with equal opportunities and a sense of belonging, Saputo recently shared resources to help employees recognize and address unconscious bias. [Learn more here.](#)

Have a human resources strategy to share with your dairy processing industry colleagues? WCMA would love to help you amplify it! Contact [WCMA Senior Director of Programs & Policy Rebekah Sweeney](#) to be featured.

---

## Share Job Openings on WCMA Jobs Board



Visit WCMA's [online jobs board](#) to view job openings from WCMA members Alpine Slicing & Cheese Conversion; Associated Milk Producers, Inc.; Bunker Hill Cheese; Land O'Lakes, Inc.; Masters Gallery Foods; Milk Specialties Global; and Westby Cooperative Creamery.

Have an opportunity at your company or cooperative? WCMA members can [post openings](#) on the Jobs Board anytime - it's free and easy!

[SEE ALL OPENINGS](#)