



# WISCONSIN CHEESE MAKERS ASSOCIATION

EST. 1891

## Coronavirus Information and Resources

Bulletin Distributed: May 14, 2020

As often news and needs warrant, Wisconsin Cheese Makers Association will distribute special bulletins alerting you to information and resources related to industry operations and coronavirus (COVID-19). Your WCMA staff is here to support you, and we thank you for your important work.

---

### Court Ruling Opens Wisconsin, While Some Counties Enact Stay-at-Home Orders

As WCMA first reported members in an alert last night, [the Wisconsin Supreme Court has overturned an extension of Governor Tony Evers' Safer at Home order](#), saying that Department of Health Services Secretary-designee overstepped her authority.

Supreme Court Chief Justice Patience Roggensack noted the ruling would take immediate effect, denying Republican lawmakers' request for a six-day stay to allow for emergency rulemaking. This meant that, in the absence of local ordinances, bars and restaurants across the state were allowed to open. The ruling does not impact school closures.

Here's a look at news coverage of the Court's ruling and its immediate impact:

- *Newsweek*: [Wisconsin Governor says state is 'Wild West' after stay-at-home order ruling](#)
- *CNN*: [How the Wisconsin Supreme Court threw the state into coronavirus chaos](#)
- *FOX News*: [Wisconsin bars flooded with patrons following Supreme Court ruling](#)
- *USA Today*: ['OPEN IMMEDIATELY!': Wisconsinites head out to bars after stay-at-home orders lifted](#)

#### Local Orders Quickly Enacted

Following the Supreme Court Ruling, a number of [local governments quickly enacted their own stay-at-home policies](#). Their orders largely mirror the state plan, meaning that bars and restaurants must remain closed, save for delivery and takeout, and people are required to stay home with limited exceptions.

Here's a list of counties and municipalities with such orders and their associated

expiration dates:

- Brown County: May 20
- Dane County: May 26
- Door County: May 20
- Green County: May 26
- Kenosha County: May 26
- Marquette County: May 15
- Outagamie County: No end date announced
- Racine County: May 26
- Rock County: May 26
- Winnebago County: May 20
- City of Appleton: May 20
- City of Milwaukee: No end date announced
- City of Racine: May 26

Local health orders are being issued under the same statute authority under which the Evers Administration issued its extension. Wisconsin Attorney General Josh [Kaul said today he expected additional legal challenges](#).

### **What's Ahead**

Just minutes ago, Gov. Evers released, via the Department of Health Services, a [scope statement](#), the first step in an emergency rulemaking process with lawmakers. The statement notes a forthcoming rule draft will address:

- Limitations on the number of persons in a given confined space;
- Requirements for social distancing;
- Limitations on mass gatherings;
- Basic safeguards for businesses to protect employees and visitors; and
- A phased approach to reopening Wisconsin's economy and society.

[Evers also met with Republican legislative leaders via conference call](#) this morning to discuss rulemaking.

Gov. [Evers later told reporters](#) he thought both Republican leaders were comfortable without a statewide policy and said, "They were unconcerned about what I believe will be massive confusion without a statewide approach."

Assembly Speaker Robin Vos said, "I hope we can work together to put some broad parameters on the books if it's necessary, but I also feel like we have a lot of those tools already in place." Senate Majority Leader Scott Fitzgerald tweeted the three had a "good call" and that he looks forward to talking again.

WCMA will continue to keep members informed of developments impacting their businesses via member bulletins and, as necessary, alerts.

---

## **SBA Extends PPP Safe Harbor Deadline to May 18, Updates Guidance**

The U.S. Small Business Administration has again updated its [Paycheck Protection Program FAQ](#), extending the "safe harbor" repayment date to May 18 and noting the agency's assumption that any business accepting less than \$2 million in support will have made requests in good faith.

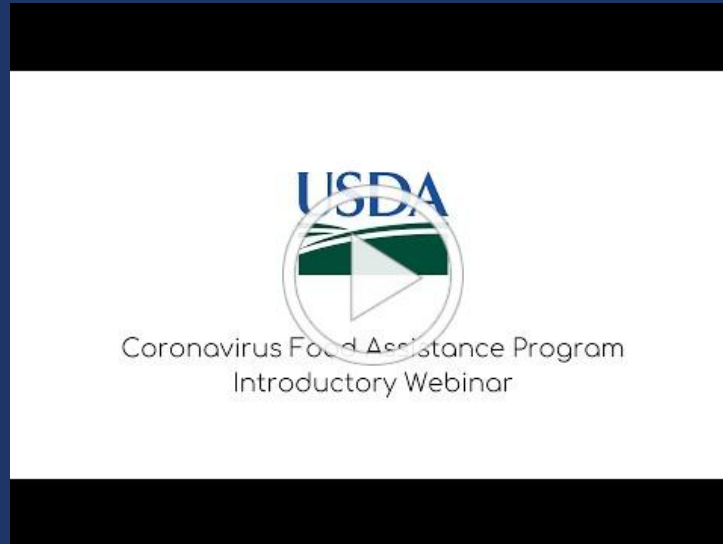
Additional questions remain regarding loan forgiveness eligibility, and WCMA staff is working with members of Congress to seek clarity. If you have questions or concerns

about the program, [please let us know](#).

---

## USDA Shares Webinar on Direct Producer Relief

Today, the U.S. Department of Agriculture hosted a live webinar outlining its plans for \$16 billion in direct producer payments as part of the Coronavirus Food Assistance Program. A [recorded version of the program](#) is now available online.



---

## Wisconsin Dairy Recovery Program Delivers \$200K in Milk, Cheese to Food Insecure

[Hunger Task Force officials announced they have delivered more than \\$200,000 in dairy products](#) to those facing food insecurity, as part of the [Wisconsin Dairy Recovery Program](#). Nearly 20,000 gallons of milk and 65 pallets of cheese have been distributed statewide through this initiative in the past three weeks.

---

## Coronavirus Headline News

### Dairy Industry:

- *Associated Press:* [Wisconsin farmers seek mental health help in crisis](#)
- *WGBA-TV:* [Pandemic adds new challenge for farmers](#)
- *Omaha.com:* [An Omaha bakery, dairy plant \(Hiland Dairy\) are latest with coronavirus cases](#)
- *Marketplace:* [Save British Cheese boxes boost sales](#)

### Wisconsin:

- *WISN-TV:* [Number of business bankruptcies skyrocketing](#)
- *WJFW-TV:* [DHS releases names of skilled nursing facilities with active COVID-19 investigations](#) [Note: complete list available on [DHS website](#)]

### National/International:

- *Washington Post:* [Five takeaways from coronavirus whistleblower's testimony](#)
- *Reuters:* [Seven weeks into lockdown, Fed has darker message](#)
- *CNBC:* [Jobless claims rise by nearly 3 million, bringing coronavirus total to](#)

[36.5 million](#)

- FOX Business: [Trump: Coronavirus vaccine could be here by end of year](#)
  - MSN: [State-by-state coronavirus news](#)
- 

## Visit [WisCheeseMakers.org](https://www.wischeesemakers.org) for More Resources

WCMA will provide links to new and timely coronavirus resources for members in these bulletins, but we want to alert you that we update our coronavirus resources page on [WisCheeseMakers.org](https://www.wischeesemakers.org) daily. Please visit the page for additional information on employee safety, regulatory flexibility, operations guidance, federal and state support, and ways to salute your critical, essential staff.

---

## WCMA Key Contacts

WCMA staff is continuously reaching out to dairy manufacturer and processor members throughout this crisis to identify ways we can be of service. If you have any questions or concerns, please contact us at any time. Here are ways to get in touch.

- WCMA Executive Director John Umhoefer: [jumhoefer@wischeesemakers.org](mailto:jumhoefer@wischeesemakers.org) or 608-225-7130
  - WCMA Communications, Education, and Policy Director Rebekah Sweeney: [rsweeney@wischeesemakers.org](mailto:rsweeney@wischeesemakers.org) or 608-386-3012
-