



WISCONSIN CHEESE MAKERS ASSOCIATION

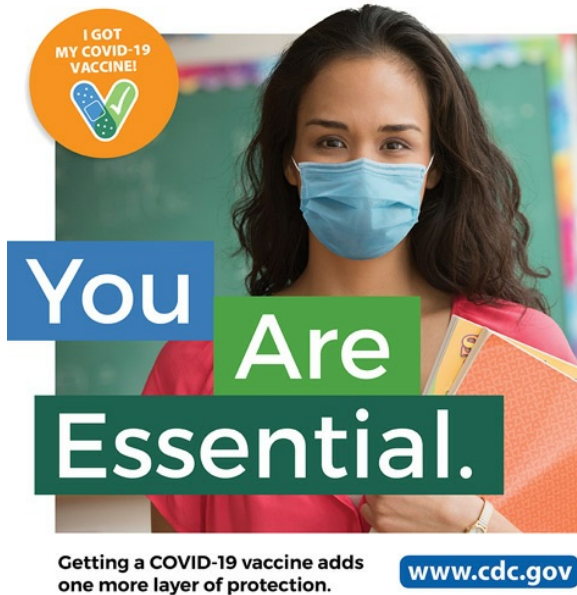
EST. 1891

Coronavirus Information and Resources

Bulletin Distributed: January 21, 2021

WCMA distributes member bulletins focused on coronavirus information on Thursdays and as breaking news warrants. WCMA delivers electronic newsletters with broader content on Tuesdays. Please contact [WCMA staff](#) with any questions.

CDC Releases COVID-19 Vaccine Communication Toolkit for Essential Workers



Earlier today, the Centers for Disease Control and Prevention published a [toolkit](#) to help employers educate their essential workers about COVID-19 vaccination, addressing common questions and concerns.

The toolkit includes:

- A letter to employees
- A slide deck for presentations to employees
- Fact sheets in nine languages
- Sample newsletter content
- 13 printable posters
- 10 social media graphics
- FAQs

CDC officials note the toolkit will be updated to include additional resources in the future. Please contact [WCMA staff](#) with any questions.

Wisconsin Panel Confirms Recommendation to Add Food Production Workers to Phase 1B Group

This morning, the Wisconsin State Disaster Medical Advisory Committee (SDMAC) approved revisions recommended by members of its vaccine subcommittee to include food production workers, among others, in the [Phase 1B vaccination group](#).

WCMA had advocated for this revision, and applauds the change.

It should be noted that SDMAC also voted this morning to recommend that Wisconsinites aged 65 and older and educators be prioritized within the Phase 1B group. The state's senior population includes approximately 1.1 million individuals, while the educator population includes 160,000.

Wisconsin Governor Tony Evers must still review SDMAC recommendations and issue final determinations on Phase 1B. WCMA will keep members informed of relevant developments.

The state is approximately 40 percent of the way through vaccinating its Phase 1A group, including approximately 330,000 health care workers and individuals living in long-term care facilities. Wisconsin is receiving just 70,000 vaccine doses per week, though state officials have requested 470,000.

WEDC Shares Employer COVID-19 Vaccine Survey to Guide Future Resources

Today, Wisconsin Economic Development Corporation and Wisconsin's Department of Health Services issued [a survey](#) designed to help agency officials understand what businesses may need to implement vaccination plans, and how the state can support and leverage those plans and provide appropriate resources. WCMA encourages Wisconsin-based members to participate.

Evers Issues New Public Health Emergency, Extends Mask Mandate

As expected, Wisconsin Governor Tony Evers has signed an [executive order](#) and [emergency order](#) establishing a new public health emergency and continuing the requirement for Wisconsinites to wear face coverings in public settings. The orders are set to expire on March 20.

Biden to Invoke Defense Production Act, Shares New National Strategy to Fight COVID-19

On Wednesday, newly-inaugurated President Joe Biden [shared a plan](#) outlining a highly-coordinated federal pandemic response, a different approach than the state-by-state plans favored by former President Donald Trump.

Today, President Biden announced plans to [invoke the Defense Production Act](#), directing federal agencies to use these powers, previously used in times of war, to require U.S. companies to make N95 masks, vaccination and testing supplies, and equipment to fight the COVID-19 pandemic.

To further implement his national response plan, in the past 24 hours, President Biden has signed a [dozen executive orders](#) and issued directives to:

- Open 100 vaccination centers in the next month
- Require mask-wearing on federal property and during use of public

- transportation, including airplanes, trains and intercity buses
- Establish a "COVID-19 Response Office"
- Offer a COVID-19 database through the Centers for Disease Control and to show county-by-county case information
- Hire more health care workers
- Collect data on school reopenings and the spread of COVID-19 to facilitate scientific research into best practices
- Fund research into additional antiviral treatments

Some of the other parts of Biden's plan require Congressional approval of his [\\$1.9 trillion coronavirus aid package](#), which among aid for the unemployed, small businesses and other, includes \$350 billion to support states' vaccine administration, testing, contact tracing, and school reopening.

The Biden Administration today reiterated its goal to administer [100 million vaccine doses](#) in the first 100 days of his presidency.

USDA Announces Food Box Round 5 Contracts

The U.S. Department of Agriculture (USDA) this week announced [approved contracts](#) for the fifth round of Farmers to Families Food Box program purchases, which runs through April. USDA reports it has distributed more than [133 million food boxes](#) since the start of the pandemic.

Wisconsin Commission Directs CARES Funding for 12 Rural Broadband Expansion Projects

The Public Service Commission of Wisconsin (PSC) today announced [12 broadband expansion projects](#) are underway, thanks to \$5.3 million in Coronavirus Aid, Relief and Economic Security (CARES) funding. The projects have already connected another 2,000 homes and businesses with internet access. Projects are located in many areas in which [WCMA members operate](#), including Dodge and Fond du Lac Counties and the communities of Egg Harbor, Turtle Lake and Wiota.

Coronavirus Headline News

Wisconsin

- *WISN-TV*: [Hospitals on COVID-19 vaccine: don't call us](#)
- *USA Today*: [Wisconsin is among the nation's leaders in the hunt to detect new, more dangerous COVID-19 variants like B.1.1.7](#)

National/International

- *Politico*: [States' new vaccination worry: not enough doses](#)
 - *FOX News*: [States report COVID-19 vaccine shortages and cancel appointments](#)
 - *CNN*: [States call for more COVID-19 vaccines as U.S. death toll moves past 400,000](#)
 - *Associated Press*: [Biden revives support for WHO, reversing Trump retreat](#)
-

Visit [WisCheeseMakers.org](https://www.wischeesemakers.org) for More Resources

WCMA's coronavirus resources page on [WisCheeseMakers.org](https://www.wischeesemakers.org) is updated daily, featuring information on employee safety, regulatory flexibility, operations guidance, federal and state support, and ways to salute your critical, essential staff.

WCMA Key Contacts

Members with pandemic-related questions or concerns should feel encouraged to contact WCMA staff at any time. Here are ways to get in touch.

- WCMA Executive Director John Umhoefer: jumhoefer@wischeesemakers.org or 608-225-7130
 - WCMA Communications, Education, and Policy Director Rebekah Sweeney: rsweeney@wischeesemakers.org or 608-386-3012
-