



TOP 25
CANDIDATES
FOR
CHANGE

2022



The Washington Business Properties Association is laying the groundwork for a comprehensive campaign aimed at restoring sanity for our residential, commercial and retail real estate partners.

Our industries continue to face serious challenges as a result of the pandemic, and unfortunately policies enacted by the state Legislature aren't helping. Basic property rights continue to be eroded, but this election cycle is a once-in-a-decade chance to meaningfully influence real estate policy in our state.

In this guide you will find the WBPA's recommendations on who to vote for and support financially, the "Top 25 for Change." After serious vetting, the WBPA believes that if these candidates are elected, we can turn the tide for property rights in the 2023 legislative session.

Please consider telling your network to get activated, vote, volunteer, and share your talents and resources. With your help, we can shape policy and elect people that understand the need to protect property rights in Washington State.

Sincerely,

Chester Baldwin
CEO & Executive Director
The Washington Business Properties Association



ACTIVATE ★ EDUCATE ★ LITIGATE ★ LEGISLATE

360.205.2345 | support@thewbpa.org | www.thewbpa.org

CANDIDATE: Steve Hobbs

OFFICE SOUGHT: Secretary of State

PARTY AFFILIATION: Democratic

MAXIMUM CONTRIBUTION: \$4,000

WEBSITE: www.electhobbs.com

DONATION LINK:

<https://secure.actblue.com/donate/electstevehobbs>



CANDIDATE: Jim Ferrell

OFFICE SOUGHT: King Co. Prosecutor

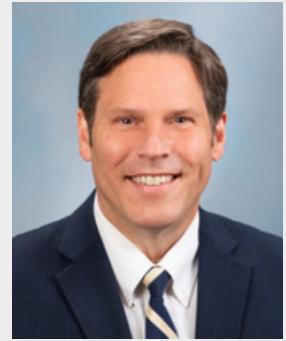
PARTY AFFILIATION: Republican

MAXIMUM CONTRIBUTION: \$1,000

WEBSITE: www.jimferrell.org

DONATION LINK:

<https://www.efundraisingconnections.com/c/JimFerrell>



CANDIDATE: Bill Boyce

OFFICE SOUGHT: 47th District State Senator

PARTY AFFILIATION: Republican

MAXIMUM CONTRIBUTION: \$2,000

WEBSITE: www.votebillboyce.com

DONATION LINK:

<https://www.votebillboyce.com>



CANDIDATE: Jesse Young

OFFICE SOUGHT: 26th District State Senator

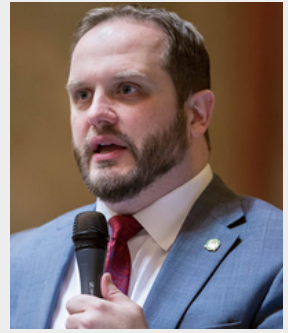
PARTY AFFILIATION: Republican

MAXIMUM CONTRIBUTION: \$2,000

WEBSITE: <http://jesseyoungforsenate.com>

DONATION LINK:

<https://secure.anedot.com/vote-jesse-young/donate>



CANDIDATE: John Lovick

OFFICE SOUGHT: 44th District State Senator

PARTY AFFILIATION: Democratic

MAXIMUM CONTRIBUTION: \$2,000

WEBSITE: www.electjohnlovick.org

DONATION LINK:

<https://secure.actblue.com/donate/lovick>



CANDIDATE: Simon Sefzik

OFFICE SOUGHT: 42nd District State Senator

PARTY AFFILIATION: Republican

MAXIMUM CONTRIBUTION: \$2,000

WEBSITE: www.simonforwa.com

DONATION LINK:

<https://www.efundraisingconnections.com/c/SimonSefzik>



CANDIDATE: Carmen Goers

OFFICE SOUGHT: 47th District Representative

PARTY AFFILIATION: Republican

MAXIMUM CONTRIBUTION: \$2,000

WEBSITE: www.carmengoers.org

DONATION LINK:

<https://www.carmengoers.org/donate>



CANDIDATE: Ashli Tagoai

OFFICE SOUGHT: 30th District Representative

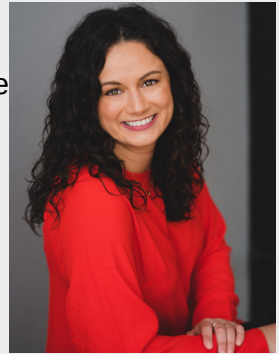
PARTY AFFILIATION: Republican

MAXIMUM CONTRIBUTION: \$2,000

WEBSITE: www.ashli4wa.com/home

DONATION LINK:

<https://secure.anedot.com/3cb61a8e-4645-484c-b3ee-54e76c8e877c/donate>



CANDIDATE: Linda Kochmar

OFFICE SOUGHT: 30th District State Senator

PARTY AFFILIATION: Republican

MAXIMUM CONTRIBUTION: \$2,000

WEBSITE: www.lindakochmar.com

DONATION LINK:

<https://secure.anedot.com/linda-kochmar/donate>



CANDIDATE: Mark Harmsworth

OFFICE SOUGHT: 44th District Representative

PARTY AFFILIATION: Republican

MAXIMUM CONTRIBUTION: \$2,000

WEBSITE: www.markharmsworth.com

DONATION LINK:

<https://secure.anedot.com/mark-harmsworth-for-state-representative/mark-harmsworth-for-state-representative-c09ca965cfb>



CANDIDATE: Drew MacEwen

OFFICE SOUGHT: 35th District State Senator

PARTY AFFILIATION: Republican

MAXIMUM CONTRIBUTION: \$2,000

WEBSITE: <http://www.votedrewmac.com>

DONATION LINK:

<https://checkout.square.site/merchant/MLAFPZH8N4XPN/checkout/NPHXFR-OPUR6LFY52HYKT63SH>



CANDIDATE: Greg Cheney

OFFICE SOUGHT: 18th District Representative

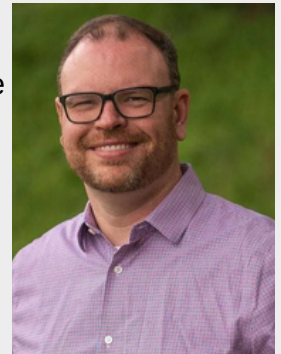
PARTY AFFILIATION: Republican

MAXIMUM CONTRIBUTION: \$2,000

WEBSITE: <https://electgregcheney.com>

DONATION LINK:

<https://electgregcheney.com/donate>



CANDIDATE: Spencer Hutchins

OFFICE SOUGHT: 26th District Representative

PARTY AFFILIATION: Republican

MAXIMUM CONTRIBUTION: \$2,000

WEBSITE: <http://electspencerhutchins.com>

DONATION LINK:

<https://secure.anedot.com/friends-of-spencer-hutchins/289667dc-42cc-40c2-8a03-7ebedd3d8bb8>



CANDIDATE: Nikki Torres

OFFICE SOUGHT: 15th District State Senator

PARTY AFFILIATION: Republican

MAXIMUM CONTRIBUTION: \$2,000

WEBSITE: www.nikkitorresforwa.com

DONATION LINK:

<https://www.efundraisingconnections.com/c/NikkiTorres>



CANDIDATE: Matt Boehnke

OFFICE SOUGHT: 8th District State Senator

PARTY AFFILIATION: Republican

MAXIMUM CONTRIBUTION: \$2,000

WEBSITE: <http://mattforwa.com>

DONATION LINK:

<https://www.efundraisingconnections.com/c/MatthewBoehnke>



ACTIVATE ★ EDUCATE ★ LITIGATE ★ LEGISLATE



CANDIDATE: Trevor Smith

OFFICE SOUGHT: 40th District Representative

PARTY AFFILIATION: Democratic

MAXIMUM CONTRIBUTION: \$2,000

WEBSITE: www.trevorfor40th.com

DONATION LINK:

<https://secure.anedot.com/trevorsmith/donate>



CANDIDATE: Michelle Darnell

OFFICE SOUGHT: 48th District State Senator

PARTY AFFILIATION: Republican

MAXIMUM CONTRIBUTION: \$2,000

WEBSITE: <https://electmichelledarnell.com>

DONATION LINK:

<https://secure.anedot.com/michelledarnell/donate>



CANDIDATE: Dan Johnson

OFFICE SOUGHT: 42nd District Representative

PARTY AFFILIATION: Republican

MAXIMUM CONTRIBUTION: \$2,000

WEBSITE: <https://votedanjohnson42.com>

DONATION LINK:

<https://votedanjohnson42.com/donate>



CANDIDATE: Susanna Keilman

OFFICE SOUGHT: 28th District Representative

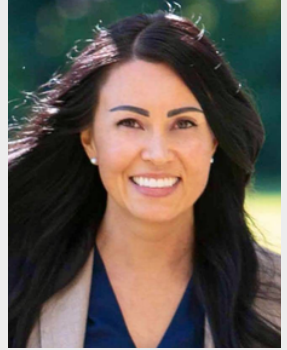
PARTY AFFILIATION: Republican

MAXIMUM CONTRIBUTION: \$2,000

WEBSITE: <https://voteforsusanna.com>

DONATION LINK:

<https://voteforsusanna.com/donate>



CANDIDATE: Kyle Lyebyedyev

OFFICE SOUGHT: 47th District Representative

PARTY AFFILIATION: Republican

MAXIMUM CONTRIBUTION: \$2,000

WEBSITE: <https://peopleforkyle.org>

DONATION LINK:

<https://secure.anedot.com/people-for-kyle/donate>



CANDIDATE: Mark James

OFFICE SOUGHT: 38th District Representative

PARTY AFFILIATION: Republican

MAXIMUM CONTRIBUTION: \$2,000

WEBSITE: www.electmarkjames.com

DONATION LINK:

<https://www.efundraisingconnections.com/c/MarkJames>



CANDIDATE: Anita Azariah

OFFICE SOUGHT: 38th District State Senator

PARTY AFFILIATION: Republican

MAXIMUM CONTRIBUTION: \$2,000

WEBSITE: <https://anita4wa.com>

DONATION LINK:

<https://www.efundraisingconnections.com/c/AnitaAzariah>



CANDIDATE: Casey Jones

OFFICE SOUGHT: 30th District Representative

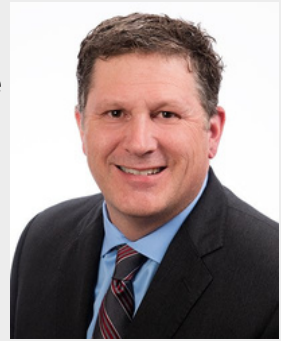
PARTY AFFILIATION: Republican

MAXIMUM CONTRIBUTION: \$2,000

WEBSITE: www.friendsofcaseyjones.com

DONATION LINK:

<https://secure.anedot.com/5f57e367-4270-419e-a907-15ddc9b3504c/donate>



CANDIDATE: Janelle Cass

OFFICE SOUGHT: 21st District State Senator

PARTY AFFILIATION: Republican

MAXIMUM CONTRIBUTION: \$2,000

WEBSITE: www.janellecass.com

DONATION LINK:

<https://www.janellecass.com/donate>



CANDIDATE: Gary Kemp

OFFICE SOUGHT: 38th District Representative

PARTY AFFILIATION: Republican

MAXIMUM CONTRIBUTION: \$2,000

WEBSITE: www.kempforwa.com

DONATION LINK:

<https://www.efundraisingconnections.com/c/GaryKemp>



ACTIVATE ★ EDUCATE ★ LITIGATE ★ LEGISLATE

360.205.2345 | support@thewbpa.org | www.thewbpa.org

