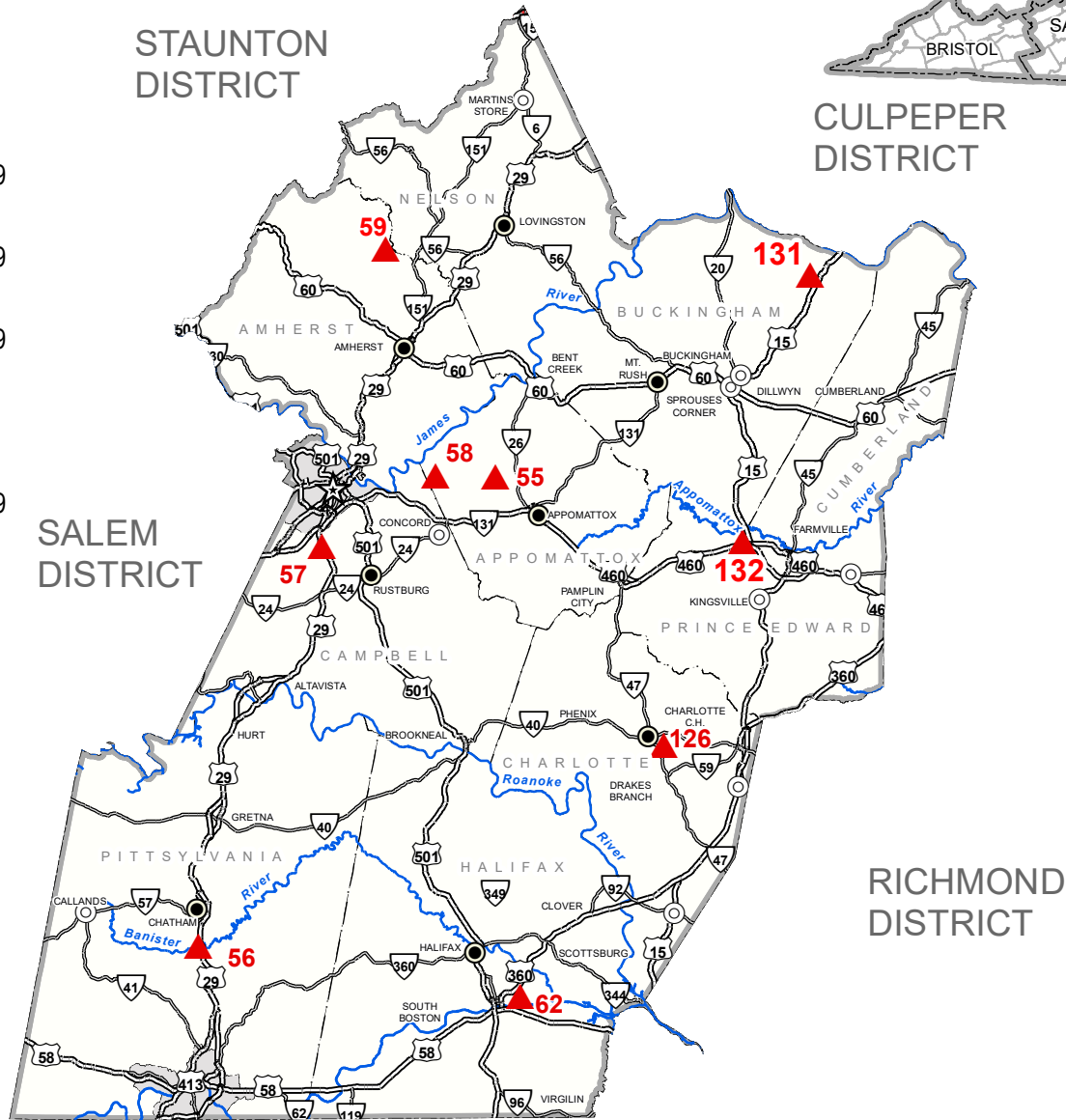
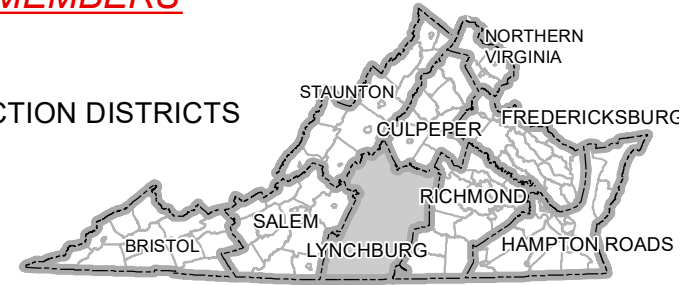


# VIRGINIA TRANSPORTATION CONSTRUCTION ALLIANCE - AGGREGATE MEMBERS

## LYNCHBURG DISTRICT

- 55 Rockydale - Appomattox Quarry  
Rockydale Quarries Corp., [www.rockydalequarries.com](http://www.rockydalequarries.com)
- 126 BMC Quarry  
Southside Materials, 434-542-5194
- 56 Chatham Quarry  
Southside Materials, 434-836-5490
- 57 Lawyers Road Quarry  
Boxley, [www.boxley.com](http://www.boxley.com), 434-239-9249
- 58 Mt. Athos Quarry  
Boxley, [www.boxley.com](http://www.boxley.com), 434-239-9249
- 59 Piney River Quarry  
Boxley, [www.boxley.com](http://www.boxley.com), 434-239-9249
- 62 South Boston Quarry  
Southside Materials, 434-572-3931
- 131 Arvonja Quarry  
Boxley, [www.boxley.com](http://www.boxley.com), 434-239-9249
- 132 Prince Edward Plant  
Luck Stone Corp., [www.luckstone.com](http://www.luckstone.com)

### VDOT CONSTRUCTION DISTRICTS



#### LEGEND

- ▲ CRUSHED STONE
- DISTRIBUTION YARD
- ◆ INDUSTRIAL MINERALS
- SAND & GRAVEL



NORTH CAROLINA