

# Manassas Museum

Gallery Renovation Project

2017-2018



# Manassas Museum, Main Gallery





**This is gonna be bad.....**



## Rear of main gallery

The project to upgrade some of the displays took place in this part of the gallery.



**Knabe and Gaehle baby grand piano,  
ca. 1850**

Originally owned by the Rev. Sydnor G. Ferguson  
who served under Colonel John S. Mosby's command  
during the Civil War.



**This display was removed to make way for the new “Manassas At Play” exhibition.**



# So, what was removed?



**We lost the entire “box” shown in  
the middle of this image.**







## The Civil War timeline....



The Peace Jubilee exhibit....



**The Public School exhibit....**

**Remember when I said  
I was worried.....?**





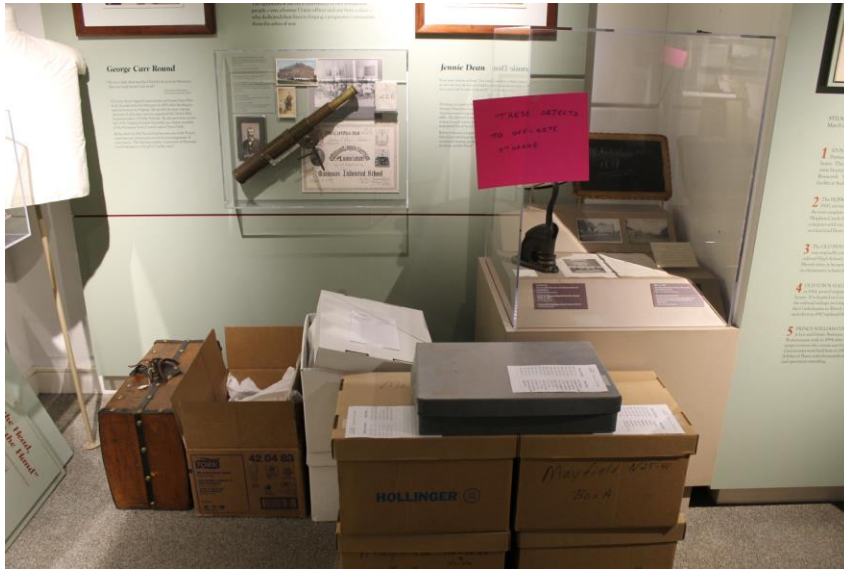
**Stanchions served as barriers between the front and back of the gallery.**



# Staging areas are set up to receive objects removed from exhibition.



# Spaces are designated to hold everything.





# Providing protection to objects and cases is critical

Packing blankets protected objects displayed on platforms.



Plastic drop cloths taped over cases during construction.





# Big men move the big stuff!

Some basic training on handling objects was needed before we started.





Moving the large piano.

# Demolition!

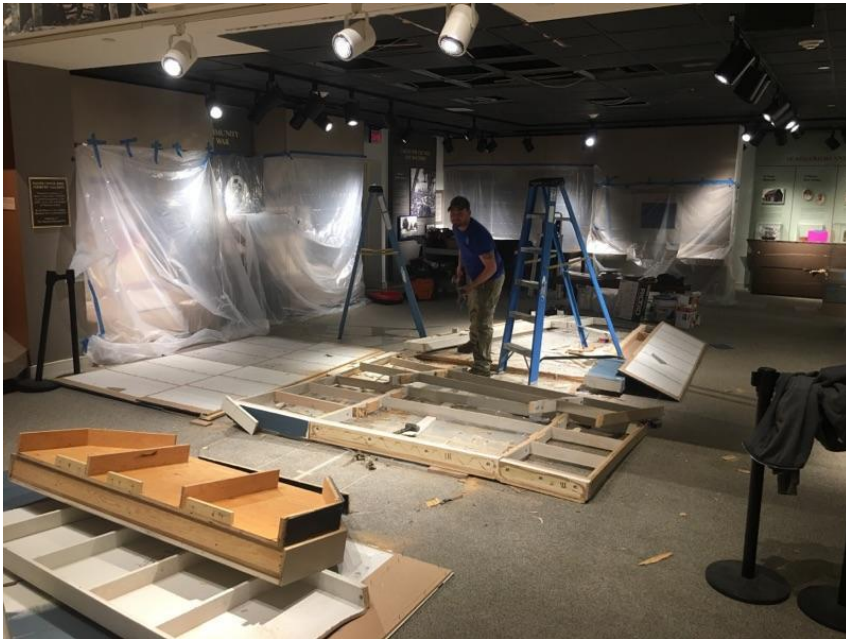








All work took place inside the main gallery.



**Walls were unavoidably damaged – this one and another had to be repaired.**





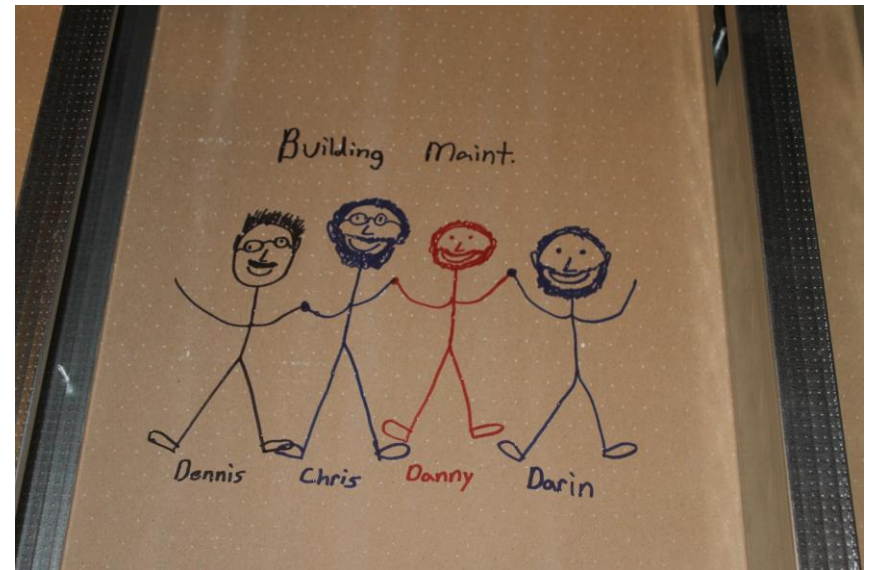
Demolition complete – waiting on the new exhibit.

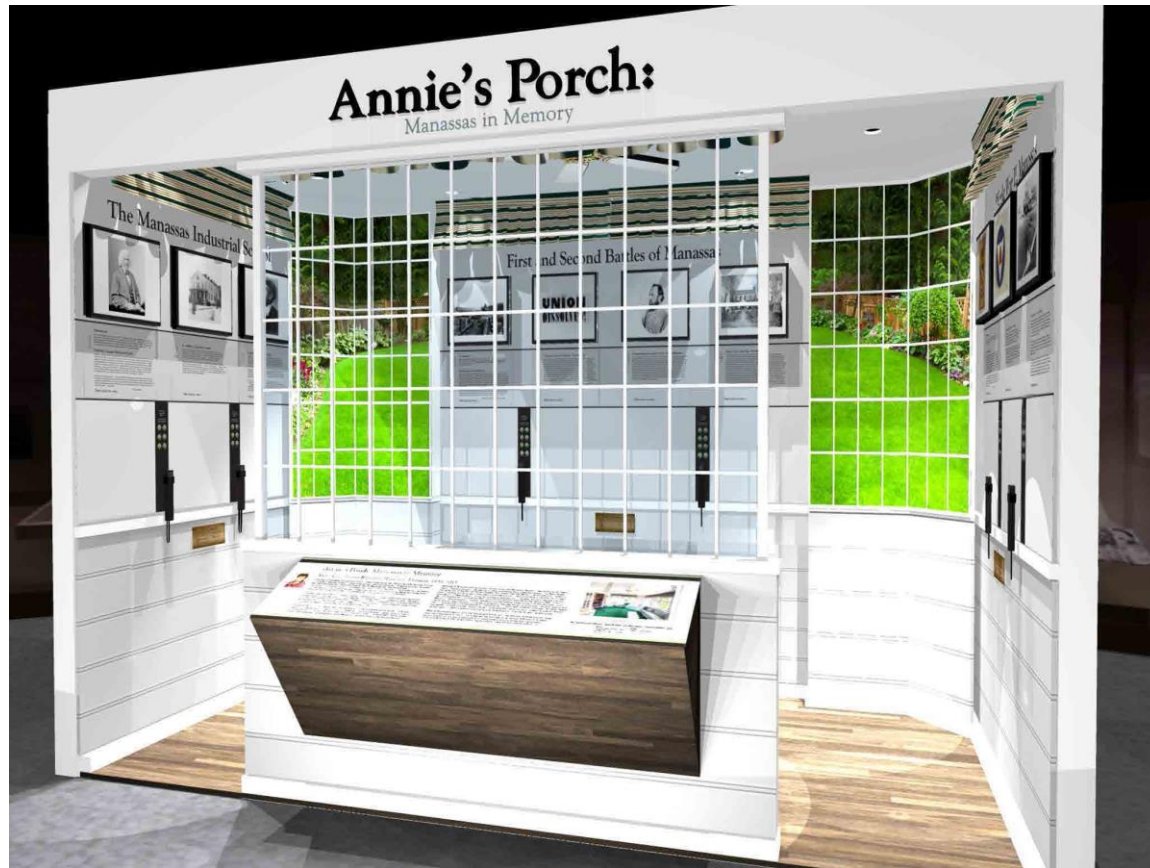
# Construction on the new box begins.





# We left our signatures for future museum employees to find.





## **Annie's Porch: This Was Manassas**

This was the exhibit that started it all....



The Civil War drum has been replaced by a  
21<sup>st</sup> century flat screen television.



The Civil War timeline exhibit and camp scene are both removed.



# Public Schools exhibit

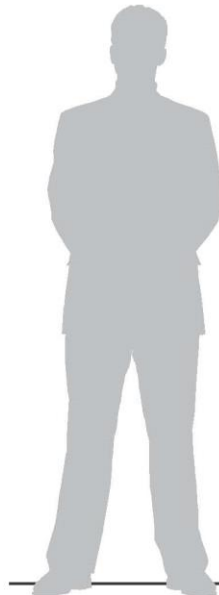
quote: silkscreen

14.8 x 18.8 Plaque"

8.8 x 6.3 Plaque"

17 x 10.8 Plaque"

16.8 x 10.3 Plaque"



.20.6"

.20.6"

.20.6"

.20.6"

.25"

53.375"

.25"

104" tall

83.875" wide  
existing wall

[illegible]

# Former video wall



# *Artistic Expression* exhibit



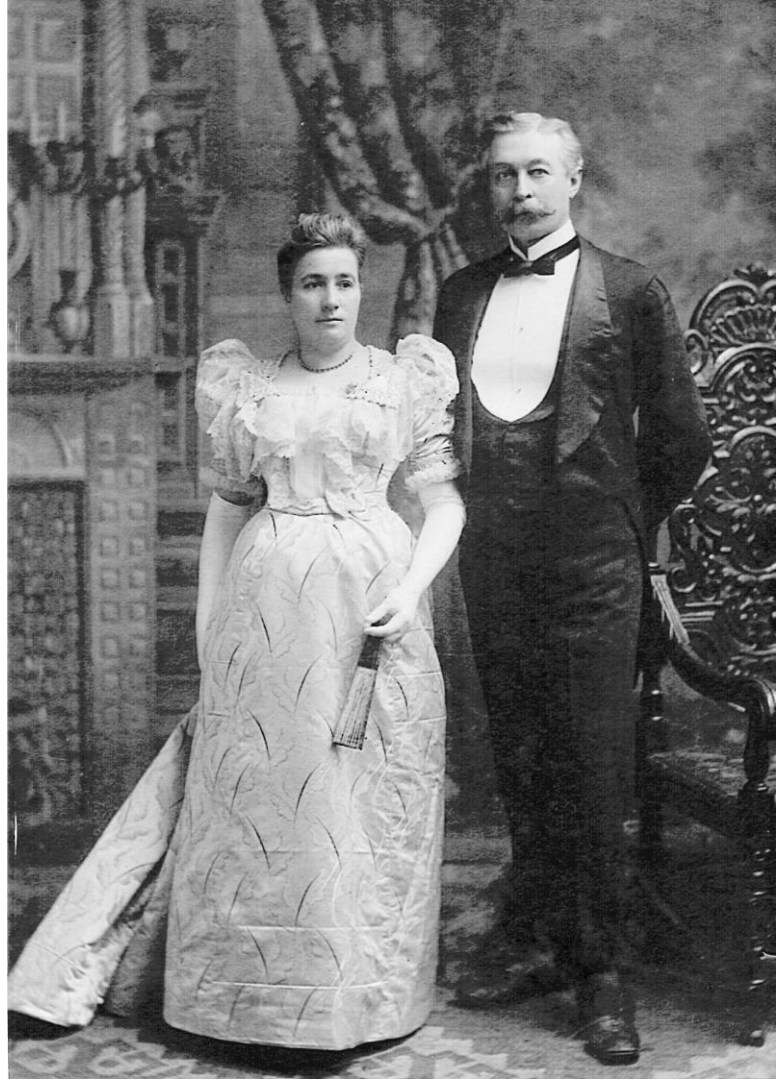




## *Expanding Boundaries*

This exhibit on the Boys and Girls Club of Manassas  
is one of TWO we are opening on April 13.

*Living the American Dream* –  
an exhibit on the Portner  
Family also opens on the  
13<sup>th</sup> of April. I hired a  
guest curator to assist with  
this show.





**What did we learn?**

# QUESTIONS?

