

Balancing the Preservation Needs of the Collection with the Integrity Needs of the Building

Veronica Gallardo, Operations & Collections Manager, Casemate Museum
Chelsea Morris, Collections Specialist, Casemate Museum
Tiffani Emig, Programs Director & Administrative Manager, FAIC
Terri Schindel, Conservator & CAP Assessor, Museum Training Network

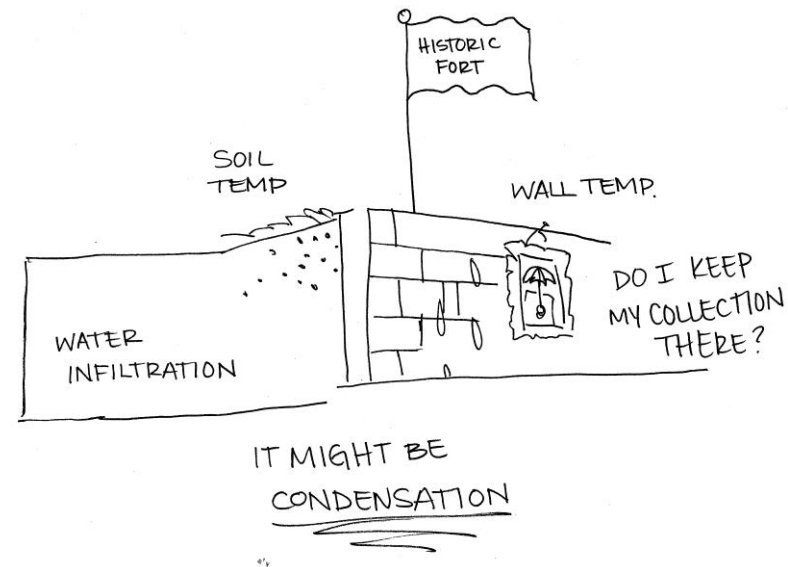
About the Casemate Museum

History/Significance of the Site

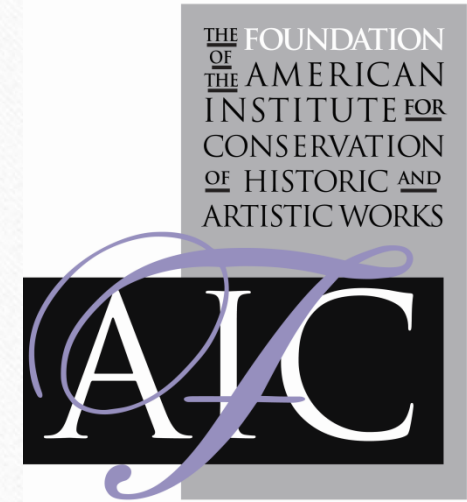
- About Fort Monroe
 - 400 years of history
 - Casemate Museum was founded in 1951, known as the Jefferson Davis Cell
- Army Transfer
 - BRAC Decommissioning- FMA
 - MOU/MOA- Transfer of Artifacts
- National Monument 2011

Working Outside In

- How we got to CAP
 - HSR → Findings
 - About the Largest Artifacts (understanding the structure, the environment help guide to better care for the collections)
 - HSR did not focus on the collections & one of their recommendations was to get a collections assessment



Collections Assessment for Preservation (CAP) Program



The CAP Program

Supports general conservation assessments
for small and mid-sized museums.



A **general conservation assessment** is a review of all of a museum's collections, buildings, and building systems, as well as its policies and procedures related to collections care.

Goal: Determine the museum's greatest collection care needs.



How does it work?

The CAP Team: Staff, board, and two consultants:
a collections assessor and a building assessor

Process: Prep work, two-day site visit, draft review

Final Product: Comprehensive report with
recommendations on improved collections care
from two different perspectives



SAMPLE CAP EXECUTIVE SUMMARY

Critical

- Repair downspouts to prevent water infiltration into collections storage

High Priority

- Update Collections Management Policy

Medium Priority

- Install UV filters over light fixtures in areas that house or display collections
- Rotate items on display at least every 6 months to reduce exposure to light

Low Priority

- Install air filtration system in connection with HVAC system

How can CAP help?



- Provides a path forward
- Shows evidence of need for grant funding
- Outside perspective → improved board support

How much funding does CAP provide?

Annual Budget of the Institution	Allocation Per Assessor
Less than \$250,000	\$3,900
\$250,000 to \$750,000	\$3,700
More than \$750,000	\$3,500

CAP

Collections Assessment
for Preservation



Application



Next Program Cycle

Applications Open: November 1, 2018

Applications Close: February 1, 2019

www.conservation-us.org/cap

CASEMATE MUSEUM
FORT MONROE AUTHORITY, VA.
First Impression!



Institutional Planning for a CAP includes filling out a questionnaire that is provided by FAIC who sends it to each assessor. The assessors get their initial impression about the institution from the questionnaire.

The Assessors review all governing and planning documents prior to the visit. Who knew how much water is here?



Questionnaire - Is there a history of recurring problems in any of the following areas?

Answer - wall condensation, window condensation/leaks, roof leaks, stained walls, stained ceilings, electrical problems, blown fuses/tripped circuits, flooding on grounds

Water Infiltration

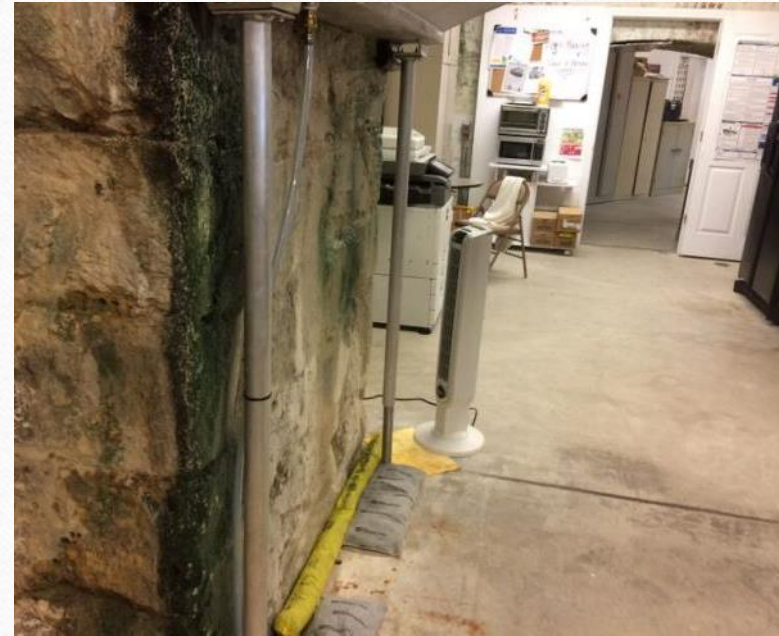


Photo Credit: Jessica H. Senker (AIA), J&M Preservation Studio

Collection care/Preservation

Storage and Exhibits

Damage caused by water intrusion and the building



Photo Credit: Jessica H. Senker (AIA), J&M Preservation Studio

Images that show how staff protects collections

Placing objects on exhibit inside display cases and vitrines:



Displaying objects that are not affected by adverse conditions.





Photo Credit: Casemate Museum, FMA



Photo Credit: Jessica H. Senker (AIA), J&M Preservation Studio

How to Protect collections in storage

Long-term recommendation is to move to an off-site facility

Everything is stored in
locked cabinets or



Containerization – Acid free
boxes and plastic containers.



Photo Credit: Jessica H. Senker (AIA), J&M Preservation Studio

Creative Solutions to protect staff and collections

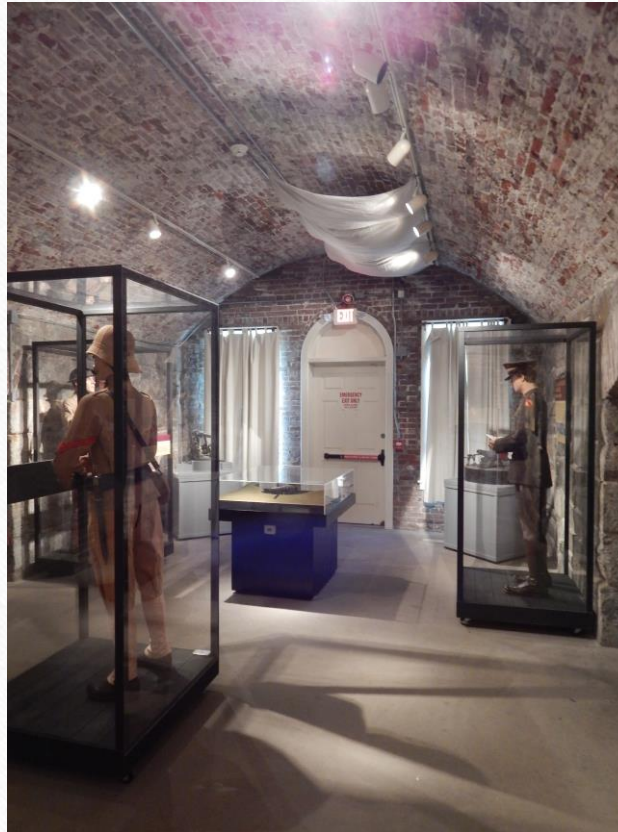


Photo Credit: Casemate Museum, FMA



Photo Credit: Jessica H. Senker (AIA), J&M Preservation Studio

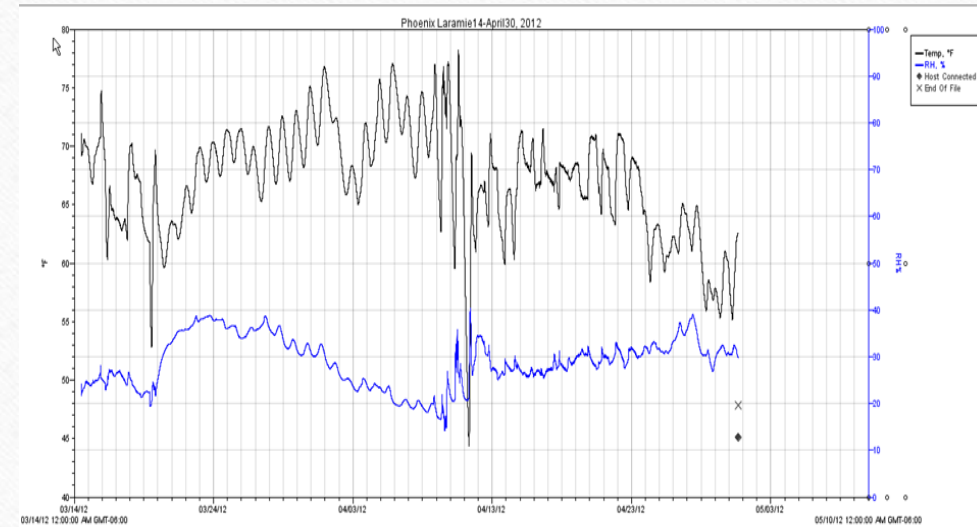
Mitigate environment



Photo Credit: Jessica H. Senker (AIA), J&M Preservation Studio

Environment

Monitoring, Data Collection and Interpretation



Security and Emergency Preparedness

Preparedness and Response Planning



Emergency Management and Drills



While onsite, Assessors may brainstorm with staff about Future Projects such as moving collections to a different building and/or development of Casemates for future exhibit galleries.



Photo Credit: Jessica H. Senker (AIA), J&M Preservation Studio

New visitor center and archive building

Building 8 A – Examined building for Possible use as
offsite Storage facility



Tell all!
Assessors love to go
anywhere and find
your secrets!



Photo Credit: Casemate Museum, FMA



Photo Credit: Jessica H. Senker (AIA), J&M Preservation Studio

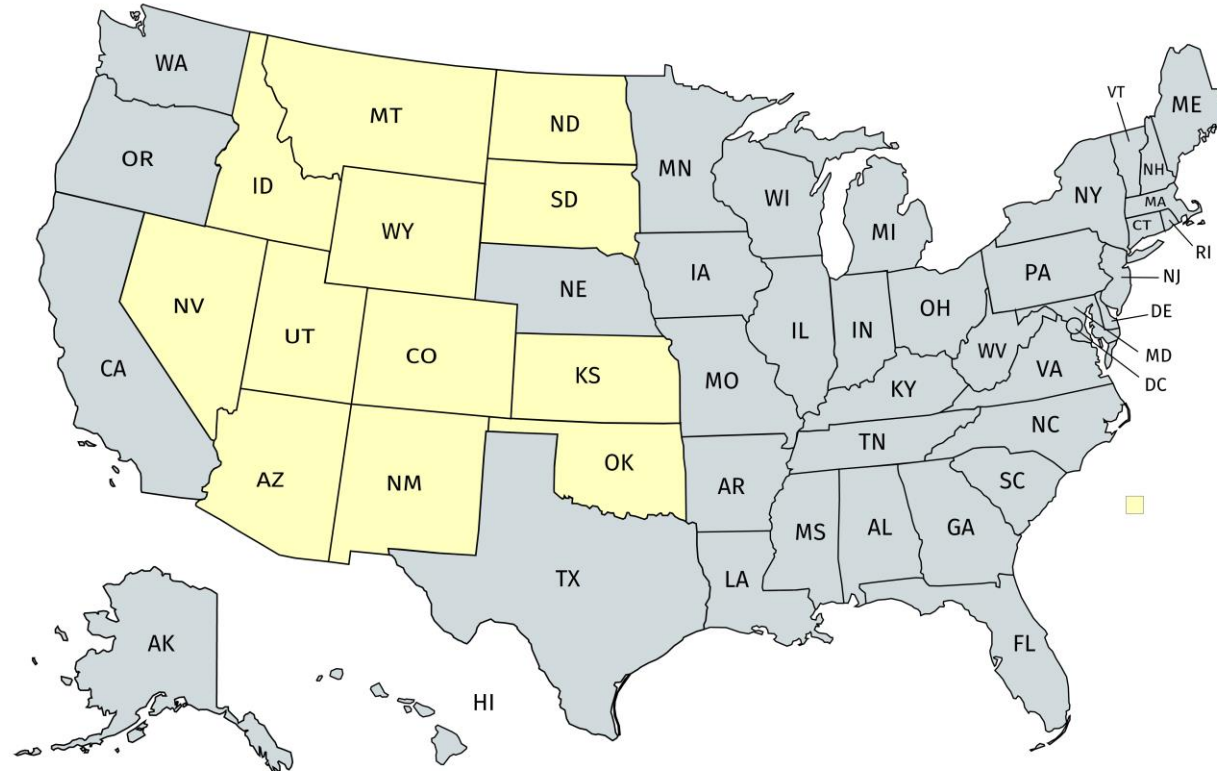


Next Steps - Implementation
Staff and Volunteer Training
Grant writing and mentoring



Museum Training Network, 501 C3 - Services Provided:

The Museum Training Network (501 C3) offers assessments, conservation services, on-site training, care of collections, and disaster assistance. We conduct statewide programs via a Mobile Conservation and Training Laboratory. (970 237 0152)



Complete

- Lighting in Cases
- Shelves
- HVAC
- Grant – Museums for America



Complete

- Lighting in Cases
- Shelves
- HVAC
- Grant – Museums for America



In Progress

- Jefferson Davis Cell
- Funding for archives project
- Continuing ongoing collections projects
- Micro Climate Cases
- Processing Manual



In Progress

- Jefferson Davis Cell
- Funding for archives project
- Continuing ongoing collections projects
- Micro Climate Cases
- Processing Manual



In Progress

- Jefferson Davis Cell
- Funding for archives project
- Continuing ongoing collections projects
- Micro Climate Cases
- Processing Manual



Photo Credit: Hadley Exhibits, Inc.

Planning Ahead

- Strategic Plan
- Acquisitions Plan → Rotation Policy/Army Loan
- Volunteer Training
- Additional Staff



Planning Ahead

- Strategic Plan
- Acquisitions Plan → Rotation Policy/Army Loan
- Volunteer Training
- Additional Staff

