

Urban Water Institute
The City View – Panel Presentation
City of Paramount
February 16, 2022

ITEM NO. 1



CITY OF PARAMOUNT



Paramount Community

- General Law City – Established in 1957
- 4.8 square miles
- Southeast area of Los Angeles County – Gateway Cities
- DAC/Underserved Community
- Population: 55,000 – 56,000

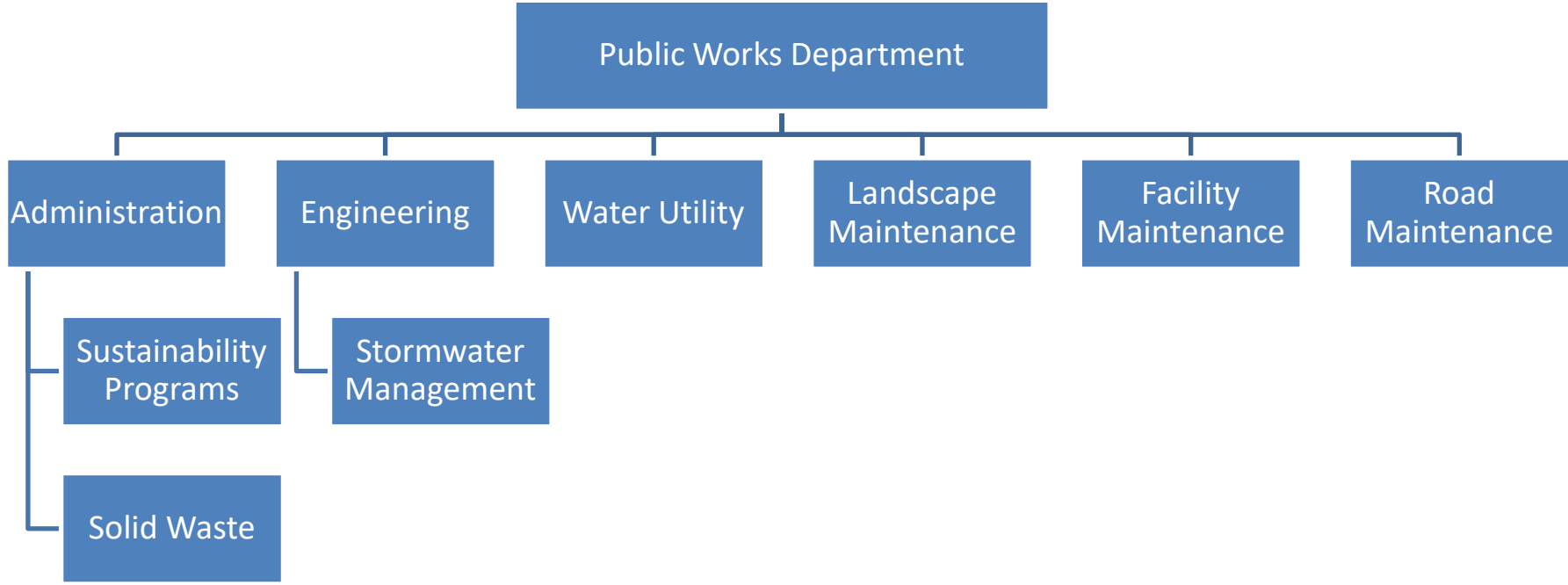
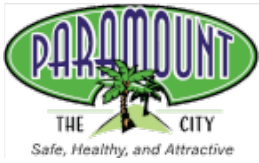


ITEM NO. 1

Public Works Department

- To provide and preserve the City's infrastructure and facilities
- Public Works is charged with building and maintaining the physical assets of a City





ITEM NO. 1



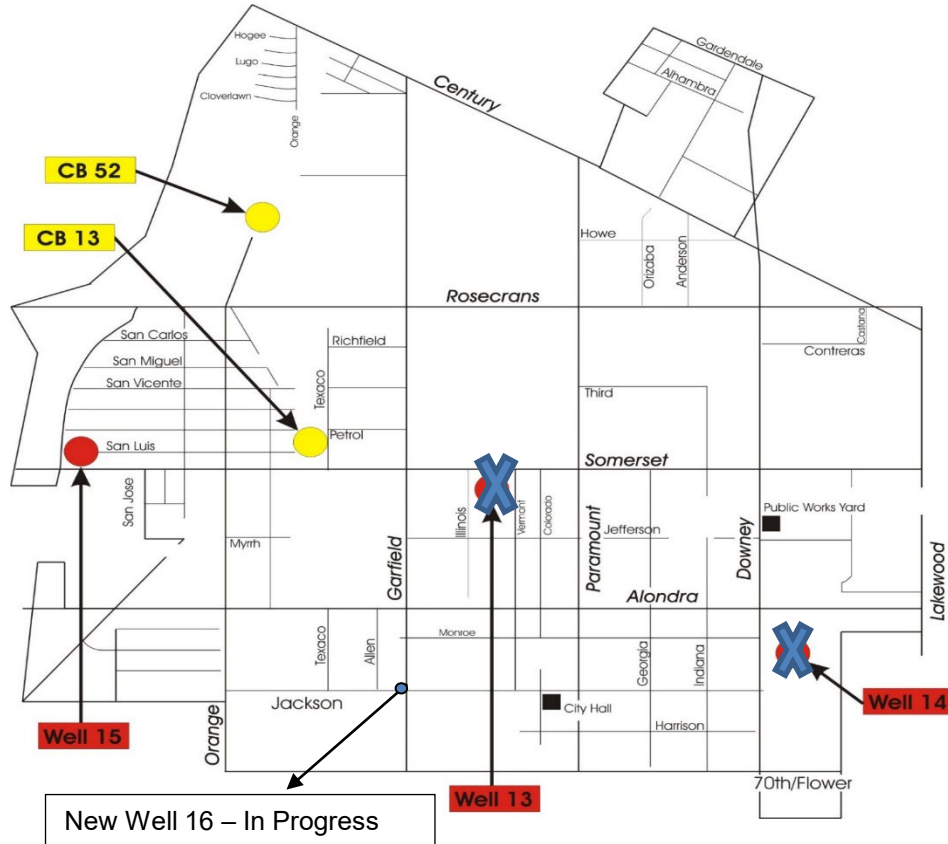
Water System Background

- Service Area
 - 7,429 Accounts
- Annual Water Demand
 - Average of 6,400 AF per Year
- Groundwater
 - ~~3~~ groundwater wells + 1 in development
- Met Connections: 2



ITEM NO. 1

Water System Map



ITEM NO. 1

Challenges for Municipal Systems



- Funding – Balancing Needs for System and Rate Payer Capacity
- Water Master Plan - \$70M in Future Projects
- Finding Outside Funding Opportunities
- Regulatory Requirements

ITEM NO. 1

Support Systems



- Associations / Regional Groups
 - Gateway Water Management Authority
 - Southeast Water Coalition
 - Central Basin Water Association
- No Need to Reinvent the Wheel
- Learn from Experts in the Field

ITEM NO. 1



Summary

- Municipal Water Systems tasked with providing safe and reliable drinking water for residents
- Limited Resources
- Lack sufficient funding
- Consider contract services for funding opportunities
 - Be Smart about Potential Funding
 - Reporting Requirements
- Stay connected – Not alone



ITEM NO. 1



Contact Info

Adriana Figueroa
Public Works Director
afigueroa@paramountcity.com
562-220-2100

ITEM NO. 1