

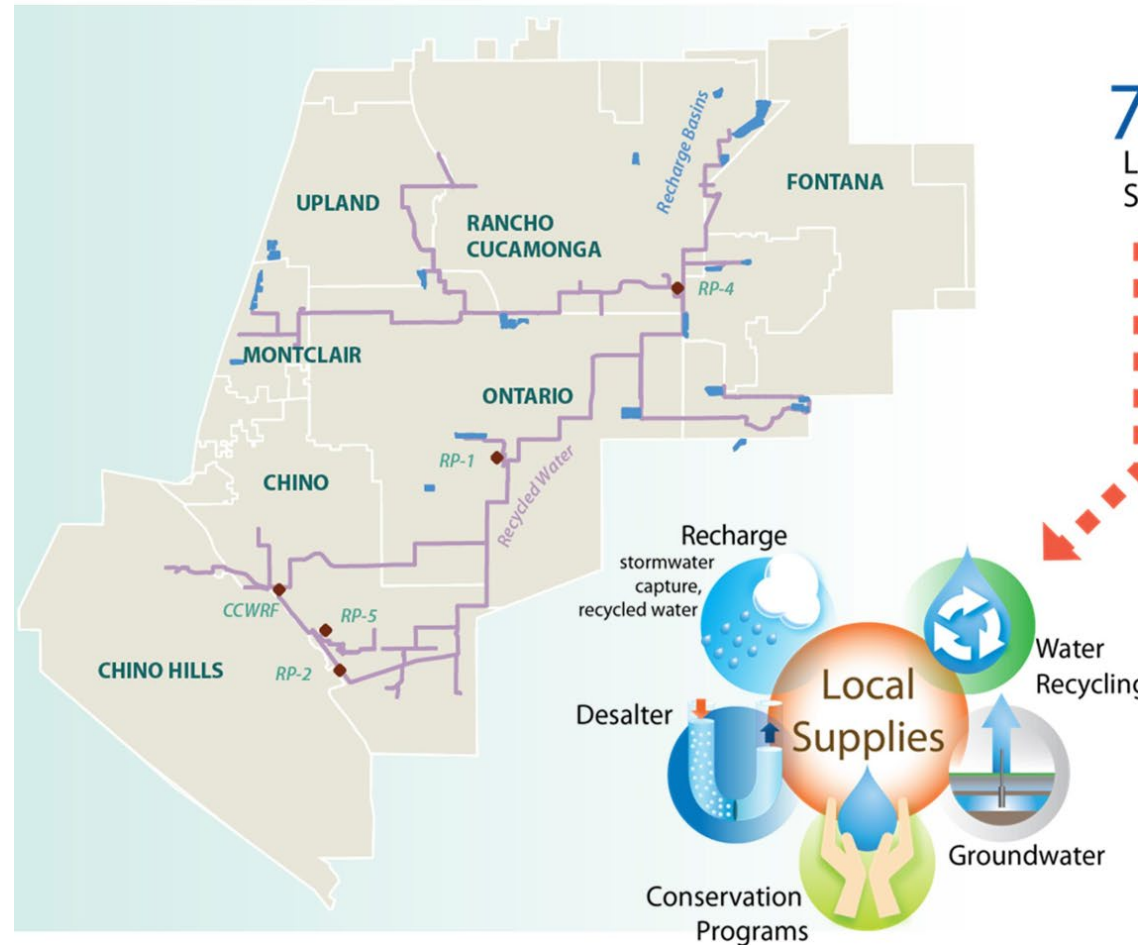
# State Water Project Dependent Agencies' Challenges (IEUA's Perspective)

## Urban Water Institute Conference

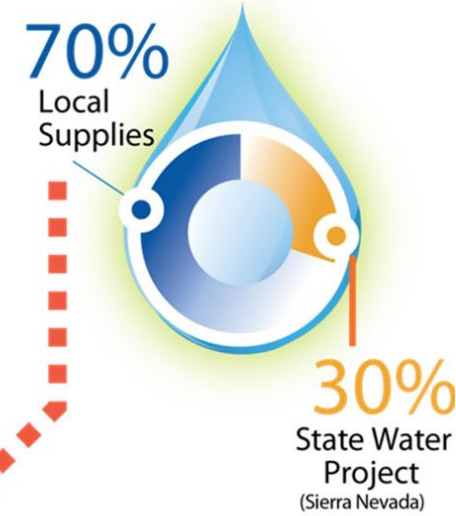
Christiana Daisy, P.E., MBA  
Deputy General Manager

# Inland Empire Utilities Agency (IEUA) Overview

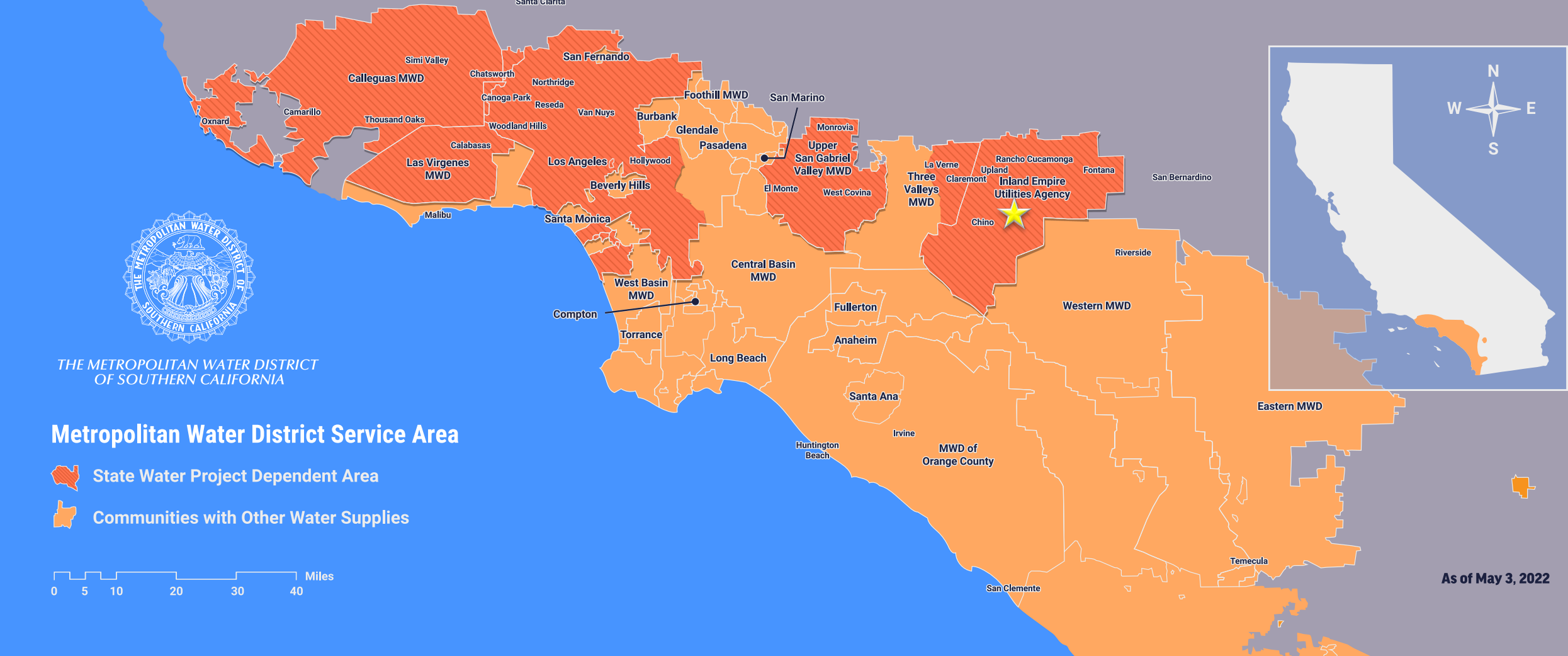
- Located in the southwestern portion of San Bernardino County
- 935,000 residents in our service area
- 242 – square miles
- Contracting and retail agencies:
  - City of Chino
  - City of Chino Hills
  - Cucamonga Valley Water District
  - City of Fontana
  - City of Montclair
  - City of Ontario
  - City of Upland
  - Fontana Water Company
  - Monte Vista Water District
  - San Antonio Water Company
  - West Valley Water District



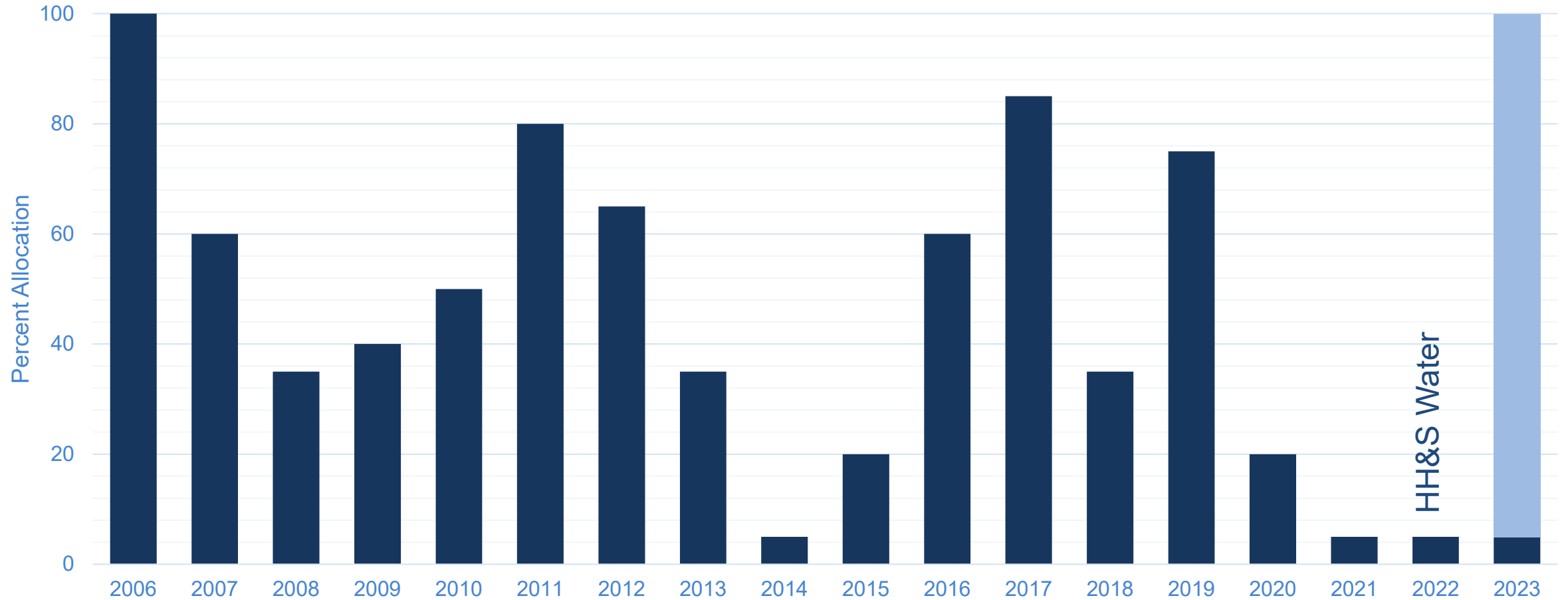
## Water Portfolio



# IEUA – One of Six MWD SWP Dependent Member Agencies



# SWP Reliability Varies Dramatically



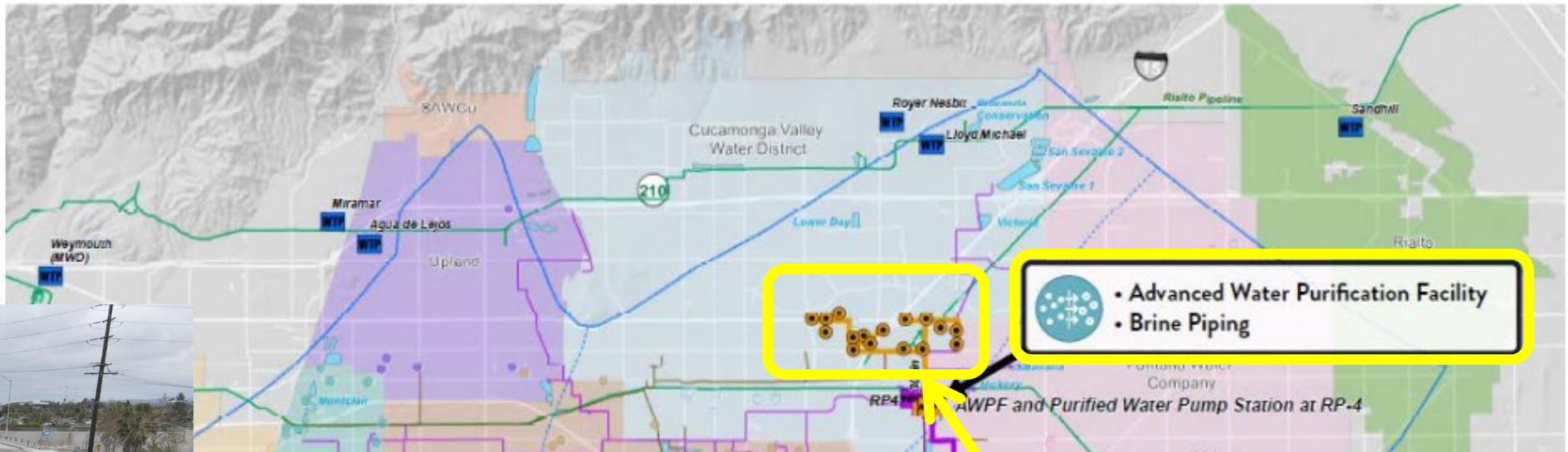
# Uncertainty is Driving IEUA's Strategic Priorities

- Adapt to changing conditions
- Increase local reliability and resiliency
  - Retain locally developed water resources
  - Leverage local groundwater basin storage
  - Optimize recycled water use in the Chino Basin
- Meet current and pending regulations on recycled water use and environmental flows
  - NPDES permit
  - Groundwater recharge
  - CECs

# Solution-based Portfolio to Address Uncertainty

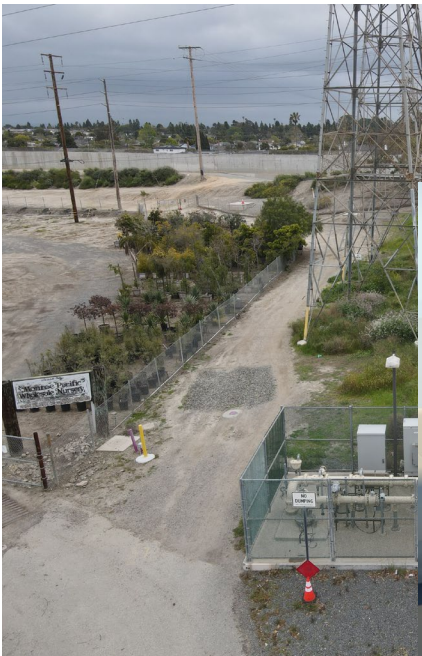
- Evaluate existing infrastructure
  - Improve recycled water distribution system
  - Review operations and maintenance of groundwater recharge basins
  - Increase recharge capacity
    - Can IEUA improve the O&M of the spreading basins?
    - Can IEUA connect non-recycled water recharge basins to recycled water system?
    - Can IEUA develop new spreading basins?
- Chino Basin Program
  - Suite of projects
    - Advanced Water Purification Facility (15 mgd)
    - Supplemental Supplies
    - Conveyance
    - Replenishment Wells
    - Extraction Wells
    - Interconnection to MWD's distribution system
  - Awarded \$215 million Proposition 1 Water Storage Investment Program

# PUT- Infrastructure



- Advanced Water Purification Facility
- Brine Piping

AWPF and Purified Water Pump Station at RP-4



- Jurisdictions**
- Rancho Cucamonga
  - Fontana
  - Rialto
  - Ontario
- Wastewater Treatment Plants**
- IEUA RP-4
  - Rialto WWTP

- Digitized Utility Legend**
- Comm (orange)
  - Sewer and Storm (green)
  - Water (blue)
  - Recycled Water (purple)
  - Electric (red)
  - Gas (yellow)



Prepared by:  
Brown-Caldwell  
Author: AMB  
Date: 4/12/2023

WSC  
N  
1:48,000  
0 1,000 2,000 3,000  
Scale: WGS 1984  
Datum: WGS 1984

References/Notes:  
1. Coordinate System: WGS 1984 Web Mercator Auxiliary Sphere  
Projection: Mercator Auxiliary Sphere  
Datum: WGS 1984

Project:  
CBP  
Preliminary Design Report

Prepared for:  
Rialto Valley Water Agency  
A RIALTO VALLEY COMPANY

Project:  
Rialto Valley Supply Project  
Preliminary Design Report  
Preliminary Alignment  
Preliminary Draft - 2023-04-12

# TAKE-Infrastructure



## Extraction & Regional Distribution



## MWD Interconnection

