



Issue 3, 2025

# Trunkline

**2025 Southern Utah Green Conference**

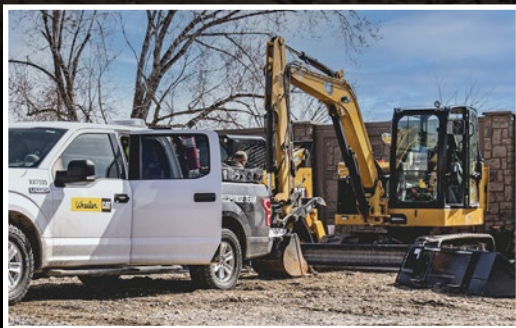
**Tuesday, October 28, 2025**

## **INSIDE THIS ISSUE:**

SUGC Speakers .....	4, 5
Slow the Flow: Landscape Demonstration Projects .....	7, 8
UNLA 2025 Award Winners .....	9
UNLA 2026 Award Nominations ..	10
2026 UGC Schedule .....	11-14



# UTAH'S CAT® DEALER SINCE 1951



18 Locations  
to Serve  
You! →



SALES | RENTAL | PARTS | SERVICE

wheelercat.com | 800-662-8650

Wheeler





**Publisher**  
Utah Nursery & Landscape Association

**Editor**  
Meeja Fortie

**Design & Layout**  
EF Creative, Inc.

**Executive Director**  
Meeja Fortie

**UNLA Staff**  
Beth Hoffman, Hayley Ward

#### EXECUTIVE BOARD

**President**  
Cameron Passey  
The Toro Company

**Vice President**  
Jessica Berrett  
Sunline Landscapes

**Secretary/Treasurer**  
Alex Morris  
Jordan River Temple

**Past President**  
Josh Sundloff  
Kirtan McConkie

#### BOARD OF DIRECTORS

Britt Bingham – Sandy Parks & Rec  
Casey Finlinson – CUWCD  
Adam Frederico – Frederico Outdoor Living  
Nicole Hancock – Botanicals Design  
Dane Horrocks – Grand American Hotel  
Mike Lorence – JWCD  
Bridget McMullin – Sprinkler World  
Earl Okelberry – Herriman City  
Zac Roberts – Weber Basin Water  
Conservancy District  
John Walker – University of Utah  
Ryan White – WCWCD

#### Ex-officio

Henry Nahalewski – UDAF  
Shital Poudyal – USU Extension

#### Emeritus

George S. Hoar – In Memoriam  
Dr. Larry Rupp – USU Extension  
Diane Mower-Jones  
Dr. Frank Williams

**Trunkline** is published four times each year as a membership benefit to inform UNLA members of the opportunities and actions of the association and its members.

**Send submissions to:**  
**Trunkline c/o UNLA Office**  
PO Box 1073  
Riverton, UT 84065-1073  
Phone 801-424-9223

#### INTERNET RESOURCES

UNLA  
[www.utahgreen.org](http://www.utahgreen.org)

## 2025 Southern Utah Green Conference

# Resilient Landscapes: Thriving in a Changing Climate

ID 314979870 © Kinomaster | Dreamstime.com

**Tuesday, October 28, 2025**

**Dixie Convention Center  
1835 S Convention Center Dr  
St. George, UT 84790**

3 tracks of classes: Tree Care, Irrigation & Landscape, and Pesticide Courses that offer CEUs for DOPL – CORE/Pro (5501), Pesticide – USE/LAW/SAFETY, ISA, IA, QWEL, UCNP

*Scan to register*



**Elite Conference Sponsor**

**Breakfast Sponsor**

**Lunch Sponsor**



---

# Meet



# the Speakers



## Ryan Stream

We are excited to announce that **Ryan Stream** will be the *keynote speaker* at the 2025 Southern Utah Green Conference. Ryan Stream is a renowned motivational speaker, musician, and advocate for resilience and overcoming adversity. His inspiring journey from homelessness to success has touched many lives and made him a sought-after speaker across the country .

Ryan's keynote address, titled **"Planting Seeds of Resilience: Overcoming Life's Droughts,"** will focus on the importance of resilience in both personal and professional life. He will share his powerful story and provide actionable insights on how to navigate challenges and thrive in the face of adversity. Additionally, the following Continued Education Units (CEUs) will be provided in conjunction with his presentation: 1 DOPL-Pro, 1 ISA, 1 UCNP

Join us on **October 28, 2025**, at the Dixie Convention Center in St. George, Utah, to hear Ryan's compelling message.



## Dan Bridenstine

**Daniel Bridenstine** is an ISA Certified Urban Forest Professional with extensive experience in arboriculture and urban forestry. His work focuses on sustainable tree management, utility coordination, and community education around best practices for tree placement and care.

In his session, "Trees & Utilities: Right Tree, Right Place," Daniel will explore how strategic tree selection and placement can minimize conflicts with utility infrastructure while maximizing environmental and aesthetic benefits. Attendees will gain practical insights into planning, planting, and maintaining trees in utility corridors—balancing ecological goals with infrastructure needs.



## Doug Bennett

**Doug Bennett** is a nationally respected leader in water conservation and sustainable landscape transformation. As the Conservation Manager for the Washington County Water Conservancy District, Doug serves seven municipalities in the fastest growing region of Utah. He has spent over two decades pioneering innovative programs that have saved billions of gallons of water while reshaping the way communities think about outdoor water use.

At the 2025 Southern Utah Green Conference, Doug will be presenting on **"Irrigation Scheduling"** sharing how effective irrigation scheduling can reduce water waste, lower costs, and promote healthier, more resilient plants.



## Kenton Seth

We are thrilled to announce that Kenton Seth will be one of the esteemed speakers at the 2025 Southern Utah Green Conference. Kenton Seth, widely recognized as “the crevice garden guy,” is a pioneering landscape professional known for his innovative work in rock garden design. He is the owner of Paintbrush Gardens, LLC, and co-author of *The Crevice Garden*.

Kenton’s expertise lies in creating beautiful and sustainable crevice gardens, which are designed to thrive in water-scarce environments. His approach combines native plant work with creative garden design, making him a perfect fit for our conference’s focus on resilient landscaping practices.

Join us on **October 28, 2025**, at the Dixie Convention Center in St. George, Utah, to hear Kenton share his insights on sustainable landscape design!



## Brad Winder & Ben Scow

**Brad Winder** serves as the Noxious Weed Supervisor for Washington County, where he leads efforts to control invasive and noxious weeds across public and private lands. With years of field experience and leadership in regional weed management, Brad brings practical knowledge and policy insight to the conversation.

**Ben Scow** is the Agriculture and Horticulture Agent for USU Extension in Washington County. He specializes in sustainable land management, plant health, and community education. Ben’s work focuses on helping landowners and gardeners implement effective, science-based weed suppression strategies. Together, Brad and Ben will present “Noxious Weeds: Identification, Impact, and Management,” a session designed to help attendees recognize common noxious weeds in Southern Utah, understand their ecological and economic impacts, and apply best practices for control and prevention.



## Craig Boreland

**Craig Boreland** is a leading authority in irrigation technology and water management, known for his deep technical expertise and engaging teaching style. As a training specialist with the Irrigation Association, Craig has educated thousands of professionals across North America on the principles of efficient irrigation design, scheduling, and troubleshooting.

At the 2025 Southern Utah Green Conference, Craig will present on both “2-Wire Intro” and “*System Troubleshooting- Basic, Intermediate, & Advanced*”. With decades of hands-on experience and a passion for empowering green industry professionals, Craig brings clarity to complex systems and inspires confidence in applying best practices.

<b>SUGC Exhibitors</b>			
			
	 <p>Wren Hollow Farm</p>		
 <p>EARTH MEDICINE ORGANIC MICROBIAL FERTILIZERS</p>			
			
			 <p>TURF EQUIPMENT &amp; IRRIGATION INC</p>



Elite Sponsor



Breakfast Sponsor



Lunch Sponsor



# Slow the Flow: Landscape Demonstration Projects

By **Cynthia Bee, BLA**, *Sustainable Landscapes Expert, Slow the Flow*

Lindsay Taylor didn't expect much from a casual chat with her neighbor while standing in her dated front yard. Her yard was functional but uninspired, and the old galvanized sprinkler system made upkeep a challenge. So when her neighbor mentioned a "casting call" for a free landscape makeover, Lindsay figured it was worth a shot. She joined 117 other Taylorsville applicants—and promptly forgot about it until Fox13 Utah showed up on her porch with the news: her yard had been selected.

This makeover is part of a new initiative by **Utah Water Ways (UWW)**, the statewide water conservation nonprofit created by the Utah State Legislature in 2023. UWW's mission is to accelerate water-saving efforts by uniting public and private organizations to work collaboratively toward shared goals, including making water-wise landscaping the norm across Utah. UWW also manages the **Slow the Flow** statewide water conservation campaign on behalf of and in collaboration with all of the partners.

The Taylorsville project is one of four demonstration landscapes funded by grants from **Salt Lake County**, the **Larry H. Miller Family Foundation**, **Zions Bank**, and **Rio Tinto**, with additional support from members of the **Utah Nursery and Landscape Association (UNLA)**. These projects aim to show-



case cutting-edge landscaping techniques, materials, and plants while documenting the transformation process in detail.

Out of 327 applicants countywide, four properties were chosen to represent common challenges faced by Utah homeowners. Each selected yard offers a unique opportunity to demonstrate practical, attractive solutions—from retaining some lawn to going completely lawn-free. All designs follow the **Localscapes®** approach, use the **new plant selection tool**, and meet requirements for landscape incentive programs.

A key component of the project is storytelling. Professional videographers are capturing both short "how-to" clips and longer episodes for a new online landscape makeover series. Unlike typical "flip" shows, this series will focus on quality transformations over time rather than slapdash weekend warrior work. The show is hosted by Cameron Alcott of Progressive Plants and Cynthia Bee of Utah Water Ways (yes, that's me!).

This season's designs are crafted by Kristyn Hansen of **Our Nesting Space**, with installations by Rodrigo Vega and the **Utah Wildflower Company** team, and LeRoy Larsen of **Scenic View Landscape**. These professionals are generously sharing their expertise to benefit homeowners and inspire the broader community.

*(continued next page)*

## MILLER COMPANIES

1836 W 4600 S  
PO BOX 305  
Hyrum UT 84319  
[millercompanieslc.com](http://millercompanieslc.com)  
Office: (435) 245-3157





Schedule a Demo Today!



walker.com/demorequest

*(Slow The Flow continued)*

While water conservation is the central goal, the series also addresses other homeowner concerns—like aesthetics, usability, and maintenance. By showing how people can truly live in their landscapes, the project hopes to spark new interest (and business) across Utah's green industry.

Looking ahead, UWW plans to expand the series beyond Salt Lake County in 2026, with new casting calls in **Washington, Davis**, and other counties. Designers, contractors, and suppliers interested in participating or donating materials are **encouraged to connect**.

Utah is home to many talented landscape professionals who understand the challenges of our unique climate. Through the Slow the Flow campaign, UWW is proud to showcase their work and help Utahns reimagine their outdoor spaces.

To get involved—whether as a designer, contractor, donor, or service provider—reach out to me at **cbee@utahwaterways.org**.

## MAXIMIZE YOUR PERFORMANCE



**CONTACT US TODAY!**

DITCH WITCH OF THE ROCKIES  
4310 W. CALIFORNIA AVE.  
SALT LAKE CITY, UT 84104  
(801) 974-9600  
DITCHWITCHROCKIES.COM



# UNLA Awards



## 2025 AWARD WINNERS



**LARRY RUPP**  
OUTSTANDING MERIT AWARD



**VON ISAMAN**  
DISTINGUISHED CONTRIBUTION AWARD



**KELLY KOPP**  
PUBLIC SERVICE AWARD



**LYNSEY NIELSON**  
WOMEN IN THE GREEN INDUSTRY AWARD



**FREDERICO OUTDOOR LIVING**  
COMMERCIAL LANDSCAPE INSTALLATION  
EXCELLENCE AWARD



**MOTT'S LANDSCAPING**  
RESIDENTIAL LANDSCAPE INSTALLATION  
EXCELLENCE AWARD



**THE SAMARA COMPANY**  
LANDSCAPE MANAGEMENT & MAINTENANCE  
AWARD

# HONORING EXCELLENCE IN THE GREEN INDUSTRY



## Award Categories:

- Distinguished Contribution Award
- Public Service Award
- Women in the Green Industry Award
- Commercial Landscape Installation Excellence Award
- Residential Landscape Installation Excellence Award
- Landscape Management & Maintenance Award (Residential or Commercial)

**The nomination deadline is October 10th!**

Awards presented January 5, 2026 at UNLA Awards Reception  
during Utah Green Conference

Email [memberservices@utahgreen.org](mailto:memberservices@utahgreen.org) with questions

---

**2026 UNLA AWARD NOMINATIONS**

---





# 2026 Utah Green Industry Conference Schedule

Mountain America Expo Center 9575 S State, Sandy, UT  
**Monday–Wednesday, January 5,6,7, 2026**

You are responsible for obtaining proof of attendance for CEUs at all sessions!  
 Schedule as of 8/25/25, subject to change without notice.



**CONFERENCE  
 REGISTRATION**

*Scan QR or click link*



**Elite Conference Sponsor**



**Design Track Sponsor**

**Irrigation Track Sponsor**

**Turf Track Sponsor**

**Landscape Track Sponsor**

## Monday, January 5, 2026

TIME	ROOM	CLASS TITLE	PRESENTER	CEUs
<b>7:00 am — REGISTRATION</b>				
8:30 - 9:20 am	<b>Turf Track</b> Eagle Room 300 AB	Subsurface Drip Irrigation Design for Turf	Dan Candland Netafim	1 DOPL- PRO, 1 IA, 1 QWEL, 1 UCNP
	<b>Arboriculture Track</b> Eagle Room 300 CD	ANSI Standards Update	Gene Pouly Pouly Consulting	1 DOPL- Core, 1 ISA, 1 UCNP
	<b>Irrigation Track</b> Eagle Room 200 A	Backflow for Landscapers Part 1	Greg Hand Backflow Training Services	1 DOPL- CORE (S330 & 5501) 1 IA, 1 QWEL, 1 UCNP
	<b>Landscape Track</b> Eagle Room 200 B	Designing Sustainable and Resilient Paver Systems	Marc Larsen Romex Hardscapes	1 DOPL- Pro, 1 UCNP
	<b>Design Track</b> Eagle Room 200 C	Rose Selection & Maintenance for Utah Gardens	Crystal Kim & Craig England Red Butte Garden	1 DOPL- Pro, 1 Pest- USE, 1 UCNP
	<b>Greenhouse/Garden Center Track</b> Eagle Room 200 D	Safety in the Greenhouse	Nancy Jeffery UDAF	1 DOPL- Core, 1 ISA, 1 Pest-Safety, 1 UCNP
9:30 -10:20 am	<b>Turf Track</b> Eagle Room 300 AB	Improving Herbicide Efficacy with Proper Use of Additives & Adjuvants	Corey Ransom USU	1 DOPL- Pro, 1 ISA, 1 Pest-USE, 1 UCNP
	<b>Arboriculture Track</b> Eagle Room 300 CD	Navigating the Procurement of New & Upcoming Cultivars	Kris Veenker Thrive Nursery	1 DOPL- Pro, 1 ISA, 1 UCNP
	<b>Irrigation Track</b> Eagle Room 200 A	Backflow for Landscapers Part 2	Greg Hand Backflow Training Services	1 DOPL- CORE (S330 & 5501) 1 IA, 1 QWEL, 1 UCNP
	<b>Landscape Track</b> Eagle Room 200 B	The Secret to Long-Term Tree Planting Success	Daniel Allen Super Trees	1 DOPL- Pro, 1 ISA, 1 UCNP
	<b>Design Track</b> Eagle Room 200 C	Proper Irrigation of Landscape Trees	Miles Becker USU	DOPL- Pro, 1 ISA, 1 IA, 1 QWEL, 1 UCNP
	<b>Greenhouse/Garden Center Track</b> Eagle Room 200 D	Is Anyone Listening?! Does Anyone Care?! Cultivating a Culture of Engagement at Your IGC	Sarah Polzin Down to Earth Garden Center	1 DOPL- Pro, 1 ISA, 1 UCNP
10:30 -11:20 am	<b>Turf Track</b> Eagle Room 300 AB	Fate of Herbicides in Plants and the Environment	Corey Ransom USU	1 DOPL- Pro, 1 Pest- USE, 1 UCNP
	<b>Arboriculture Track</b> Eagle Room 300 CD	Tree Law	Brent Bateman Durham Jones Pinegar	1 DOPL- CORE, 1 ISA, 1 UCNP
	<b>Irrigation Track</b> Eagle Room 200 A	Wireless Technology	Andy Belingheri ET Water	1 DOPL- Pro, 1 IA, 1 QWEL, 1 UCNP
	<b>Landscape Track</b> Eagle Room 200 B	Understanding Pesticide Laws & Regulations for Landscapers	Jared Vernon UDAF	1 DOPL- CORE, 1 ISA, 1 Pest- LAW, 1 UCNP
	<b>Design Track</b> Eagle Room 200 C	Maintenance Cost of Various Landscape Designs	Kelly Kopp USU	1 DOPL- Pro, 1 ISA, 1 UCNP
	<b>Greenhouse/Garden Center Track</b> Eagle Room 200 D	Diversity in Simulated Nature Creates Actual Nature	Lucas Proctor Living Planet Aquarium	1 DOPL- Pro, 1 UCNP
<b>11:20 am - 12:30 pm — LUNCH</b>				

11:30 am - 12:20 pm	<b>WIGI Lunch Room 400</b> (Ticketed Event)	Rising by Lifting Others- Sarah Polzin, Down to Earth Garden Center Sponsored by: Proven Winners ColorChoice		
12:20 - 1:00 pm	<b>WIGI Networking</b> Room 400 (Open Event)	Q & A with Sarah Polzin, Down to Earth Garden Center		
12:30 - 1:20 pm	<b>Turf Track</b> Eagle Room 300 AB	Athletic Fields & Sports Turf Management in the Desert	Rob Garcia Heritage	1 DOPL- Pro, 1 IA, 1 Pest- USE, 1 UCNP
	<b>Arboriculture Track</b> Eagle Room 300 CD	Turf & Tree Aeration: Correcting Major Soil Problems	Shane Richards USU	1 DOPL- Pro, 1 ISA, 1 UCNP
	<b>Irrigation Track</b> Eagle Room 200 A	Protecting Drinking Water: The Importance of Backflow Protection	Kelsey Johnson Rural Water Association of Utah	1 DOPL- CORE (S330 & 5501) 1 IA, 1 QWEL, 1 UCNP
	<b>Landscape Track</b> Eagle Room 200 B	Environmental Impact of Artificial Turf and Existing Restrictions	Kelly Kopp USU	1 DOPL- CORE, 1 QWEL, 1 UCNP
	<b>Design Track</b> Eagle Room 200 C	Restoration of Utah's Native Landscapes	Neal Dombrowski Red Butte Garden	1 DOPL- Pro, 1 IA, 1 QWEL, 1 UCNP
	<b>Greenhouse/Garden Center Track</b> Eagle Room 200 D	Marketing Strategies for Garden Centers	Mark Anderson Anderson's Seed & Garden Inc.	1 DOPL- Pro, 1 UCNP
1:30 - 2:20 pm	<b>Turf Track</b> Eagle Room 300 AB	Soil Health & Turf Performance	Paul Johnson USU	1 DOPL- Pro, 1 IA, 1 QWEL, 1 UCNP
	<b>Arboriculture Track</b> Eagle Room 300 CD	Invasive Wood Borer Update	Joey Caputo UDAF	1 DOPL- Pro, 1 ISA, 1 Pest- USE, 1 UCNP
	<b>Irrigation Track</b> Eagle Room 200 A	Requirements for State Rebates	Heidi King & Madison Martini Utah Dept. of Natural Resources	1 DOPL- Core, 1 ISA, 1 IA, 1 QWEL, 1 UCNP
	<b>Landscape Track</b> Eagle Room 200 B	Why are There Low Bidders? Can We Compete While Staying Legal	Mike Sowby SINC Contractors Inc.	1 DOPL- Pro, 1 ISA, .25 IA, 1 UCNP
	<b>Design Track</b> Eagle Room 200 C	Work Smarter, Not Harder: How Design and Plant Choice Can Reduce Maintenance, Part 1	Stephanie Duer Salt Lake City Public Utilities	1 DOPL- Pro, 1 ISA, 1 IA, 1 QWEL, 1 UCNP
	<b>Greenhouse/Garden Center Track</b> Eagle Room 200 D	Panel Discussion: Understanding Your Waste Stream	Jill Fletcher, Trans-Jordan, Preston Lee, Wasatch Intergrated Waste, Terry Ficklin, Southern Utah Waste District	1 DOPL- Pro, 1 QWEL, 1 UCNP
2:30 - 3:20 pm	<b>Turf Track</b> Eagle Room 300 AB	Weeds Without a Playbook: Managing Utah's Lesser-Known but Common Lawn Invaders	Taun Beddes & Michael Caron USU	1 DOPL- Pro, 1 Pest-USE, 1 UCNP
	<b>Arboriculture Track</b> Eagle Room 300 CD	Writing Better Arborist Reports for Better Business	Miles Becker USU	1 DOPL- Pro, 1 ISA, 1 UCNP
	<b>Irrigation Track</b> Eagle Room 200 A	Winterizing Irrigation Systems with Pumps	Dave Chandler Mountainland Supply	1 DOPL- Pro, 1 IA, 1 QWEL, 1 UCNP
	<b>Landscape Track</b> Eagle Room 200 B	Legal & Safety Compliance While Working in and Around Easements	Josh Sundloff Kirton McConkie	1 DOPL- CORE, 1 ISA, 1 UCNP
	<b>Design Track</b> Eagle Room 200 C	Work Smarter, Not Harder: How Design and Plant Choice Can Reduce Maintenance, Part 2	Stephanie Duer Salt Lake City Public Utilities	1 DOPL- Pro, 1 ISA, 1 IA, 1 QWEL, 1 UCNP
	<b>Greenhouse/Garden Center Track</b> Eagle Room 200 D	Roses: Care, Maintenance & Latest Varieties	Paul Mulder Glover Nursery	1 DOPL- Pro, 1 Pest-USE, 1 UCNP
3:30 - 4:20 pm	<b>Turf Track</b> Eagle Room 300 AB	Turf Equipment Maintenance	Matt Wilkinson & Katie Wilkinson Wilkinson Supply	1 DOPL- Pro, 1 UCNP
	<b>Arboriculture Track</b> Eagle Room 300 CD	Panel Discussion Trending Topics in the Tree Industry	Miles Becker, USU, Charlie Perington, Red Butte Garden, Mark Malstrom, Arbor Aide/USU	1 DOPL- Pro, 1 ISA, 1 UCNP
	<b>Irrigation Track</b> Eagle Room 200 A	Electrical Troubleshooting Equipment; Wiring Tracing	Bruce Nelson Armada	1 DOPL- Pro, 1 IA, 1 QWEL, 1 UCNP
	<b>Landscape Track</b> Eagle Room 200 B	Urban Pollinator Habitats: Designing for a Buzzing Landscape	Laura Horn Wasatch Community Garden	1 DOPL- Pro, 1 ISA, .25 IA, 1 UCNP
	<b>Design Track</b> Eagle Room 200 C	Growing Forward: Navigating Generational Transitions	Sarah Polzin Down to Earth Garden Center	1 DOPL- Pro, 1 ISA, 1 UCNP
	<b>Greenhouse/Garden Center Track</b> Eagle Room 200 D	Greenhouse Pesticide Regulations	Henry Nahalewski UDAF	1 DOPL- Core, 1 Pest-Law, 1 UCNP
4:30 - 5:30 pm — UNLA AWARDS RECEPTION, Ticked Event Room 400				



## Tuesday, January 6, 2026

TIME	ROOM	CLASS TITLE	PRESENTER	CEUs
<b>8:00 am — REGISTRATION</b>				
8:30 - 9:20 am	<b>Turf Track</b> Room 300 AB	Innovative Turfgrass Research & Future Trends	Jack Karlin Turfgrass Water Conservation Alliance	1 DOPL- Pro, 1 IA, 1 QWEL, 1 UCNP
	<b>Arboriculture Track</b> Eagle Room 300 CD	Skeletonizers and More: Foliage-feeding Caterpillars	Mair Murry USU	1 DOPL- Pro, 1 ISA, 1 Pest-USE, 1 UCNP
	<b>Irrigation Track</b> Eagle Room 200 AB	Two-Wire Installation	Brady Pitcher Sprinkler Supply	1 DOPL- Pro, 1 IA, 1 QWEL, 1 UCNP
	<b>Landscape Track</b> Eagle Room 200 C	Eco-Friendly Landscapes: How to Reduce Runoff & Enhance Water Retention	Dr. Shital Poudyal USU	1 DOPL- Pro, 1 IA, 1 QWEL, 1 UCNP
	<b>Greenhouse/Garden Center Track</b> Eagle Room 200 D	Great Plants for the Western US	Dave Dickey DWD Plants	1 DOPL- Pro, 1 ISA, 1 UCNP
	<b>Design Track</b> Room 400	Shrouded in Light: Naturalistic Planting Inspired by Wild Shrublands	Michael Guidi Denver Botanic Garden	1 DOPL- Pro, 1 UCNP
9:30 - 10:20 am	<b>Turf Track</b> Room 300 AB	Water-Wise Lawn Conversion Strategies	Jack Karlin Turfgrass Water Conservation Alliance	1 DOPL- Pro, 1 IA, 1 QWEL, 1 UCNP
	<b>Arboriculture Track</b> Eagle Room 300 CD	Tree Planting: An Interpretation of the Second Edition Best Management Practices	Charlie Perington Red Butte Garden	1 DOPL- Pro, 1 ISA, .25 IA, 1 UCNP
	<b>Irrigation Track</b> Eagle Room 200 AB	Two-Wire Troubleshooting	Brady Pitcher Sprinkler Supply	1 DOPL- Pro, 1 IA, 1 QWEL, 1 UCNP
	<b>Landscape Track</b> Eagle Room 200 C	Maintenance of a Sports Field	Karma Anderson BYU Grounds	1 DOPL- Pro, .25 IA, 1 Pest- USE, 1 UCNP
	<b>Greenhouse/Garden Center Track</b> Eagle Room 200 D	Balancing Act: Effective IPM Techniques for Garden Retailers	Erica Schoenefeld Glover Nursery	1 DOPL- Pro, 1 Pest- USE, 1 UCNP
	<b>Design Track</b> Room 400	Shrubland Inspired Gardens for the Intermountain West	Michael Guidi Denver Botanic Garden	1 DOPL- Pro, 1 UCNP
10:30 am - 12:00 pm Eagle Room 300 ABCD Room 400 Overflow Seating	<b>Keynote Speaker</b> "Becoming Great" John Kennedy, BoomerWrangle LLC			
12:00 - TBD (will not go past 3:00 pm) Eagle Room 300 ABCD	<b>"Leveraging Your ConnectSpace to Build a Contagious Ownership Mindset"</b> John Kennedy, BoomerWrangle LLC, Sarah Polzin, Down to Earth Garden Center, <b>Sponsored by Proven Winners</b>			
12:00 -12:50 pm	<b>Spanish Education</b> Room 400	"Electrical Trouble Shooting" "Resolución de problemas eléctricos"	Daniel Martinez Hydro Rain/Husquvarna	1 DOPL- Pro, 1 IA, 1 QWEL, 1 UCNP
1:00 - 1:50 pm	<b>Spanish Education</b> Room 400	"Sprinkler Design" "Diseño de Aspersores"	Daniel Martinez Hydro Rain/Husquvarna	1 DOPL- Pro, 1 IA, 1 QWEL, 1 UCNP
2:00 - 2:50 pm	<b>Spanish Education</b> Room 400	"Best Planting Practices for Trees & Shrubs" "Mejores Prácticas de Plantación de Árboles y Arbustos"	Jacob Carley Sunline Landscapes	1 DOPL- Pro, 1 ISA, .25 IA, 1 UCNP
<b>10:00 am to 2:00 pm — TRADE SHOW Opens (Exhibit Hall 5)</b>				



## Featured Keynote & Special Session Presenter: JOHN KENNEDY

- Becoming Great
- Leveraging Your ConnectSpace to Build  
a Contagious Ownership Mindset
- Coaches Corner & Round Table  
Discussions

**UTAH GREEN  
2026**

## Wednesday, January 7, 2026

TIME	ROOM	CLASS TITLE	PRESENTER	CEUs
<b>8:00 am — REGISTRATION</b>				
8:30 - 9:20 am	<b>Turf Track</b> Room 300 AB	Weed Control Strategies for Low-Water Turf	JayDee Gunnell USU Extension	1 DOPL- Pro, 1 Pest-USE, 1 QWEL, 1 UCNP
	<b>Arboriculture Track</b> Eagle Room 300 CD	Trees & Utilities	Daniel Bridenstine Rocky Mountain Power	1 DOPL- CORE, 1 ISA, 1 UCNP
	<b>Irrigation Track</b> Eagle Room 200 D	Hydraulics & Design Part 1	Jeffrey Knight JK Consulting & Design	1 DOPL- Pro, 1 IA, 1 QWEL, 1 UCNP
	<b>Garden Center/ Landscape Track</b> Eagle Room 200 C	Water-Wise Landscape Design: How to Get Started?	Rowe Zwahlen USU	1 DOPL- Pro, 1 ISA, .25 IA, 1 QWEL, 1 UCNP
	<b>Design Track</b> Room 400	Blossoms & Brawn: High Impact Crabapple Cultivars for Northern Utah Landscapes	Jim Donohoe J Frank Schmidt	1 DOPL- Pro, 1 ISA, 1 UCNP
9:30 - 10:20 am	<b>Turf Track</b> Room 300 AB	Turfgrass Disease & Pest Management in a Changing Climate	Jim Gish Gish, Inc.	1 DOPL- Pro, 1 Pest-USE, 1 UCNP
	<b>Arboriculture Track</b> Eagle Room 300 CD	Pesticide Safety in Tree Care	Henry Nahalewski UDAF	1 DOPL-Core, 1 ISA, 1 Pest-Safety, 1 UCNP
	<b>Irrigation Track</b> Eagle Room 200 D	Hydraulics & Design Part	Jeffrey Knight JK Consulting & Design	1 DOPL- Pro, 1 IA, 1 QWEL, 1 UCNP
	<b>Garden Center/ Landscape Track</b> Eagle Room 200 C	Creating a Culture of Engagement Through the Great Game of Business	John Kennedy BoomerWrangle LLC	1 DOPL- Pro, 1 ISA, 1 UCNP
	<b>Design Track</b> Room 400	How Garden History Can Drive Garden Maintenance	Esther Henrichsen Henrichsen Design	1 DOPL- Pro, 1 UCNP
10:30 - 11:30 am	<b>Coaches Corner Round Table Discussions</b> Concession Concourse	<ul style="list-style-type: none"> <li>Putting First Things First</li> <li>Delivering an Exceptional Customer Experience</li> <li>Round Robin Discussion</li> </ul>	John Kennedy BoomerWrangle LLC	1 DOPL- Pro, 1 ISA, 1 UCNP
10:30 - 11:20 am	<b>Turf Track</b> Room 300 AB	Turf Care: Keeping Green Spaces Healthy and Budget-Friendly	Chad Burdette, TruGreen	1 DOPL-Pro, 1 IA, 1 Pest- USE, 1 QWEL, 1 UCNP
	<b>Arboriculture Track</b> Eagle Room 300 CD	The Body Language of Trees	William Pruitt Certified Arborists Solutions	1 DOPL- Pro, 1 ISA, 1 UCNP
	<b>Irrigation Track</b> Eagle Room 200 D	Hydraulics & Design Part 3	Jeffery Knight JK Consulting & Design	1 DOPL- Pro, 1 IA, 1 QWEL, 1 UCNP
	<b>Garden Center/ Landscape Track</b> Eagle Room 200 C	Landscape Conversion Process & Incentives	Zac Roberts Weber Basin Water Conservancy District	DOPL- Core, 1 IA, 1 QWEL, 1 UCNP
	<b>Design Track</b> Room 400	Waterwise Landscaping: Innovations, Tools, and Resources for Professionals	Cynthia Bee Utah Water Ways	DOPL- Pro, 1 ISA, .25 IA, 1 QWEL, 1 UCNP
<b>10:00 am to 2:00 pm — TRADE SHOW OPENS (Exhibit Hall 5)</b>				

**CEU Code** – DOPL (CORE, EC & Pro) -Department of Occupational and Professional Licensure, UCNP-Utah Certified Nursery Professional, Pesticide (USE, LAW, & SAFETY)-Utah Department of Food & Ag, ISA-International Society of Arboriculture, IA-Irrigation Association, QWEL-Qualified Water Efficient Landscaper

### Important information regarding CEUs and certificates of attendance:

*Certificates of attendance will be emailed to attendees within two weeks after the conference. The UNLA will post DOPL, ISA and UCNP CEUs and attendees are responsible for reporting IA, QWEL and Pesticide CEUs. If you need DOPL and ISA CEUs, you should have selected those CEUs when you registered for the conference and included your DOPL license number (ending in 5501) and your ISA license number.*



# JACK'S WHOLESALE NURSERY

## We take your business insurance personally.

Your business is personal. That's why you deserve a personalized insurance plan specially designed to meet your needs.

American National agents have proven experience and success protecting green industry professionals like you. They take the time to understand your business, creating tailored plans that can include agribusiness-related coverages as well as insurance for commercial exposures. Additional coverages, like Commercial Auto, Commercial Umbrella, Workers' Compensation, Cyber, and Employment Practices Liability, ensure an integrated and comprehensive level of protection.

We recognize the challenges that come with building a business, and it would be our privilege to help protect yours. With a wide selection of business coverage solutions and life and annuity options, combined with the personalized service of an American National agent, we can fulfill all your individual insurance needs.

For a no-obligation Professional Insurance Review, scan the QR code.



**FLORISTS • WHOLESALE NURSERY GROWERS • GARDEN CENTERS  
GREENHOUSE GROWERS • LANDSCAPERS • LAWN MAINTENANCE**



PROUD MEMBER OF



Products and services may not be available in all states. Terms, conditions, and eligibility requirements will apply. Life insurance and annuity products may be underwritten by American National Insurance Company, Galveston, Texas. Property and casualty products and services may be underwritten by American National Property and Casualty Company or American National General Insurance Company, both of Springfield, Missouri.

25.025.66500.0225





**UNLA**  
UTAH GREEN

Utah Nursery and Landscape Association  
PO Box 1073  
Riverton, UT 84065-1073



# Calendar

## SEPTEMBER

- 9 CWEL Webinar** "Drops of Influence: Integrating Behavioral Insights for Better Water Conservation Outcomes"

## OCTOBER

- 3 Pesticide Webinar** "Safety in the Greenhouse or Closed Working Environments"

- 14-16** Central Utah Water Conservancy District  
**QWEL Seminar & Test**

- 28 Southern Utah Green Conference**

For more information go to [www.utahgreen.org/events](http://www.utahgreen.org/events)