

WELCOME!



Gary Gregory

"Mr. SUPERFANTASTIC"

Author & Speaker

TheGaryGregory.com



A few announcements before we get started...



Education Resources

Today's Conference Presentation
Available Here



Scan QR Code
for Access:





Lunch Time Prize Giveaways

Lunch is in **Hall 4**, southeast side of the trade show floor. **There will be \$10K in prizes given away!**





Entrance

Concessions

Bliss Cleaning Services

Go Play Utah

(9) Trade Shows & Meetings				UC ELECTRIC	
Precision Concrete				Bliss - Floor Services	BrightLine Landscaping
(10) Trade Shows & Meetings			NO Supply	Bliss - Carpet Services	Bliss - Turf Services
Keynote			GOVERNOR	Bliss - Lawn Care	Bliss - Turf Services
Booths (300)		U.S. Lenses of EAST	Fresh Air	Bliss - Turf Services	Bliss - Turf Services
Apprenticeships	Super One	Google Fiber	U.S. Lenses of EAST	Bliss - Turf Services	Bliss - Turf Services
Landscape	Surface Experts	Meridian Construction	Surface Restoration	Bliss - Turf Services	Bliss - Turf Services
Landscape Industry	Sherrill Williams	ATA AI	Greenway Waste & Recycling	Bliss - Turf Services	Bliss - Turf Services
100+ Exhibitors	ATA AI	ATA AI	ATA AI	Bliss - Turf Services	Bliss - Turf Services
All Exhibitors	ATA AI	ATA AI	ATA AI	Bliss - Turf Services	Bliss - Turf Services
Company Sign	ATA AI	ATA AI	ATA AI	Bliss - Turf Services	Bliss - Turf Services
Mountain West Power Meeting	ATA AI	ATA AI	ATA AI	Bliss - Turf Services	Bliss - Turf Services
MyChillLine	ATA AI	ATA AI	ATA AI	Bliss - Turf Services	Bliss - Turf Services
Visit Utah	ATA AI	ATA AI	ATA AI	Bliss - Turf Services	Bliss - Turf Services

LUNCH

Trade & Service

S&P

IT/Technology

Business

Sponsored by: **OBEO**



SIGNATURE Card

WIN \$500!

- Visit Each Booth
 - Have each Vendor Initial their space
 - Turn your card into RHA booth by 3:15pm
- Two Winners Drawn at 3:15pm Closing Ceremonies**

Enter your name & contact info below for the \$500 Signature Card Drawings, Exhibitor Prize Presentations, and more!

Name: _____

Phone: _____

Email: _____

Signature Cards

As you visit the trade show floor, remember to get your signature card filled out. Turn it in at registration by 3:15 PM to be entered to win **two \$500 Cash prizes** at the 3:30 closing ceremonies, also in Hall 4.

RHA P.A.C. Fundraising Giveaway

- Donate \$25+ to the RHA PAC for a chance to win \$500!
- Winner announced at 3:30 Closing Ceremonies.



Rental Housing Association of Utah P.A.C.

Why Donate to the RHA P.A.C. (Political Action Committee)?

“Every man owes a part of his time to the business in which he is engaged. No man has the moral right to withhold his support for an organization that is striving to improve condition within his sphere”

- Theodore Roosevelt

Scan Me To
Donate Today



www.rhautah.org/event-pac-donation

The RHA P.A.C. Funds Efforts That:



Monitor legislative and regulatory issues at the local, state, and federal level.



Help elect and maintain officials who are supportive of property rights.

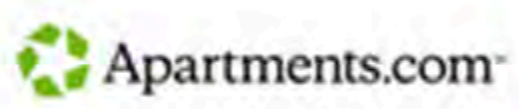


Support balanced laws and suggest alternatives to ineffective ones.



Build relationships with other stakeholders, including local governments and advocacy groups.

Thank you to our class Sponsors!

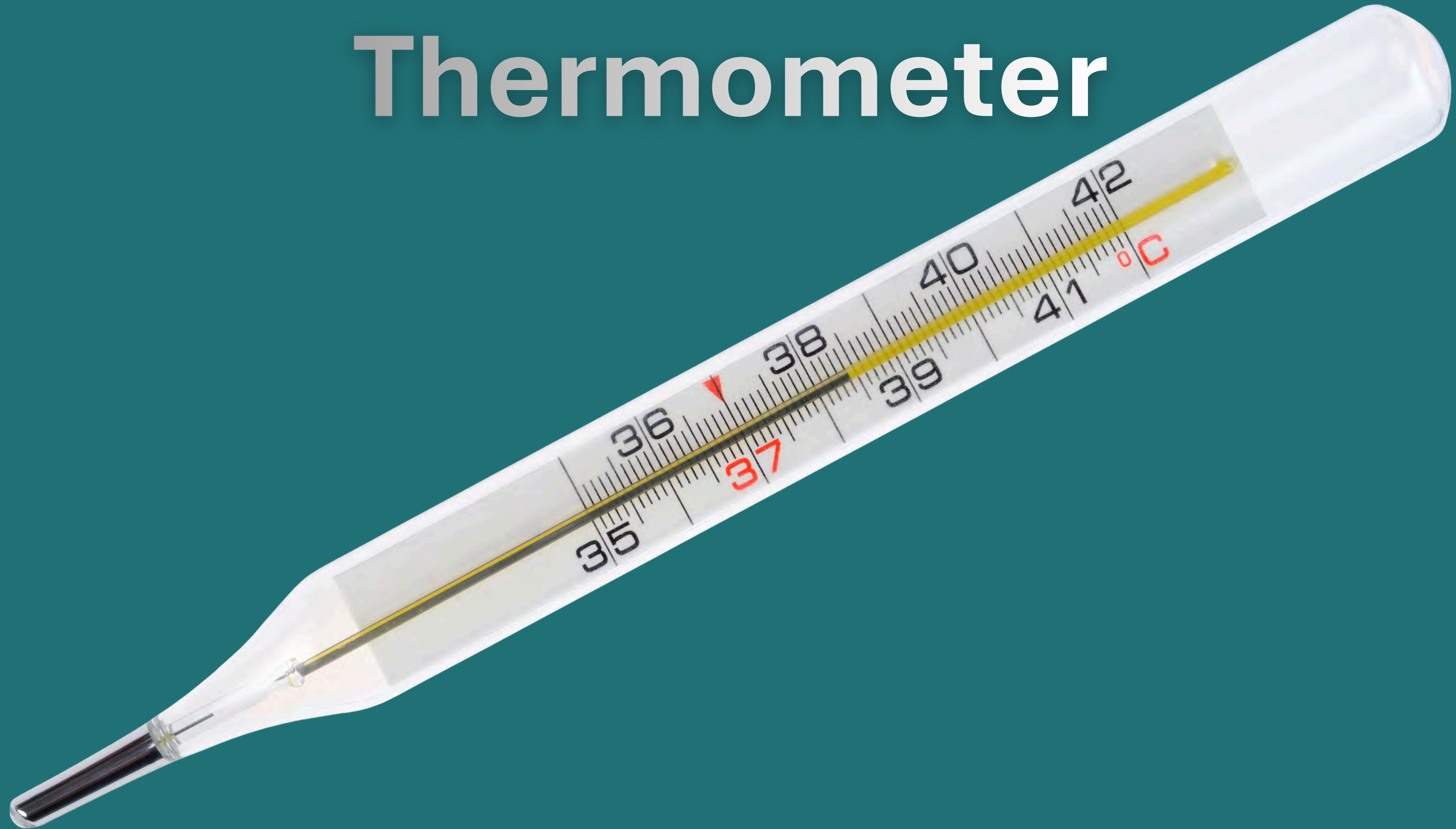


SUPERFANTASTIC LEADERSHIP!

The Disciplined Leaders Blueprint to
“Affective” Leadership



Thermometer



Objectives

Understanding Mindset Filters

Embrace Gratitude

The Value of WHO, WHY, HOW

Apply the TWA Framework

Mindset Filters



Gravity of Good Enough



Embrace Gratitude



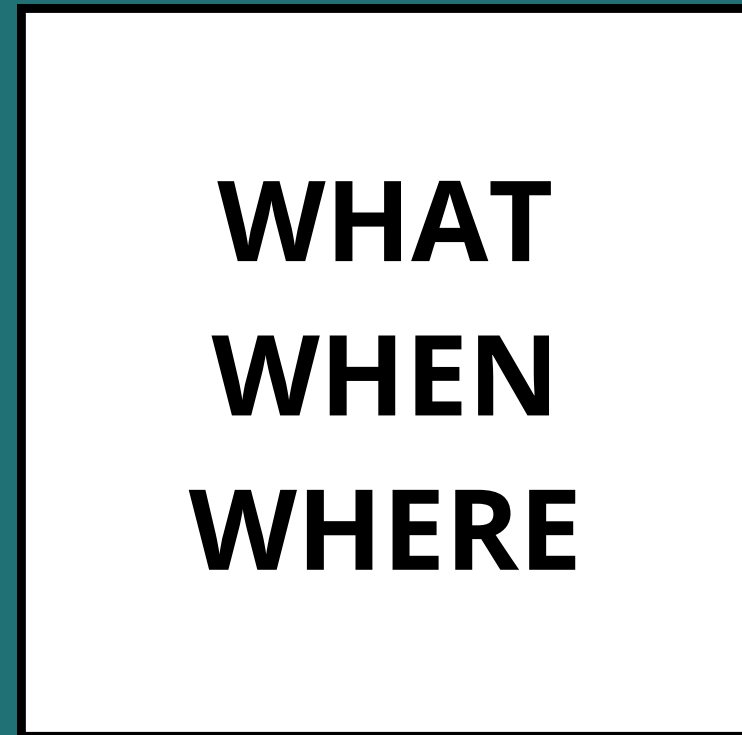
The Value of WHO, WHY, HOW



WHO, WHY, HOW by Default...

Circumstance

Person



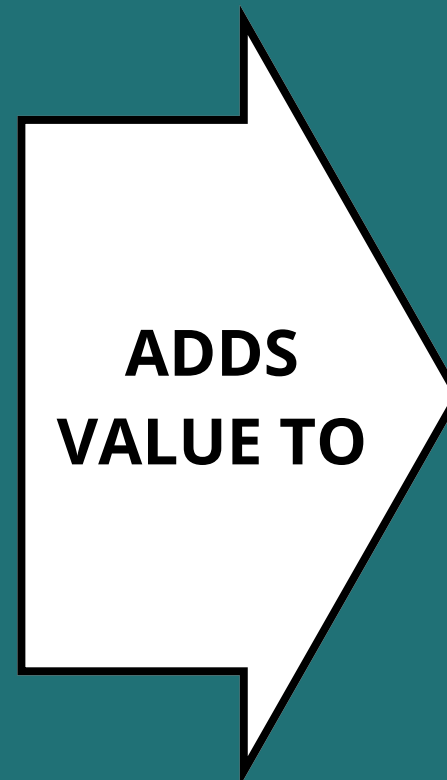
GOAL
PROJECT
THING

ATTITUDE
INTENTION
LEVEL

WHO, WHY, HOW by Design...

PERSON

OBJECT



INTENT

GOAL

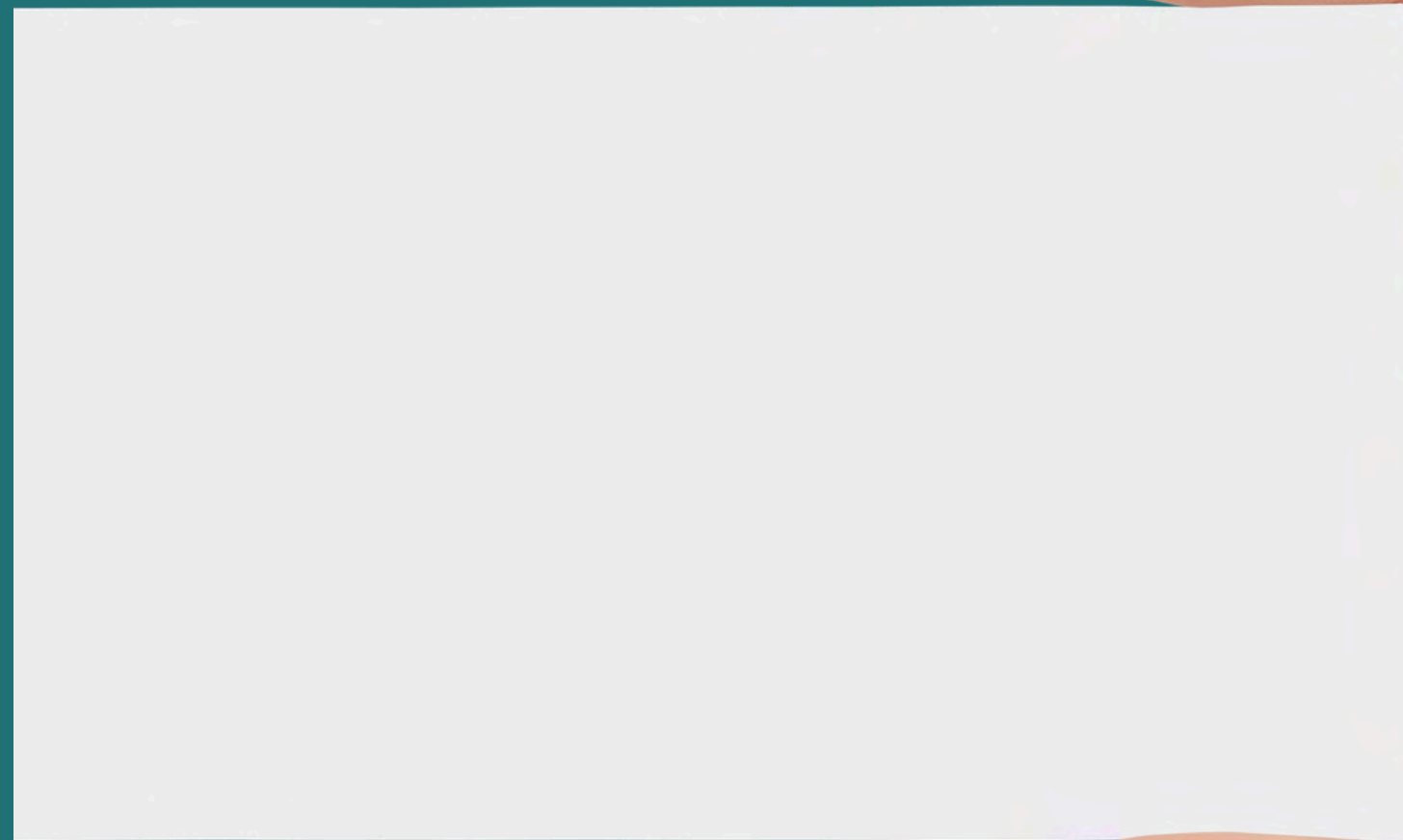
PERSPECTIVE

PROJECT

APPROACH

THING

Leadership Calling Card



Leadership Calling Card

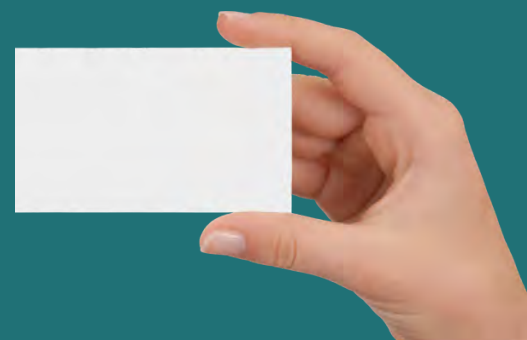
QUESTION

ANSWER

WHO



"I am"



Leadership Calling Card

Authentic	Relentless	Present	Intentional
Honorable	Disciplined	Encouraging	Strategic
Transparent	Thorough	Compassionate	Creative
Trustworthy	Persistent	Empathetic	Resilient
Principled	Diligent	Attentive	Courageous
Ethical	Driven	Gracious	Consistent
Sincere	Proactive	Approachable	Confident
Loyal	Efficient	Kind	Bold
Reliable	Focused	Patient	Decisive



Principles



Principles

QUESTION

ANSWER

WHY

ANSWERS

"Because"



Principles

Integrity	Excellence	Service	Legacy
Truth	Order	Empathy	Growth
Honor	Discipline	Connection	Innovation
Justice	Quality	Community	Stewardship
Freedom	Efficiency	Collaboration	Wisdom
Respect	Accountability	Contribution	Purpose
Faith	Precision	Kindness	Transformation
Loyalty	Clarity	Unity	Significance
Humility	Reliability	Generosity	Evolution



Core Values



Core Values



QUESTION

ANSWER

HOW

ANSWERS

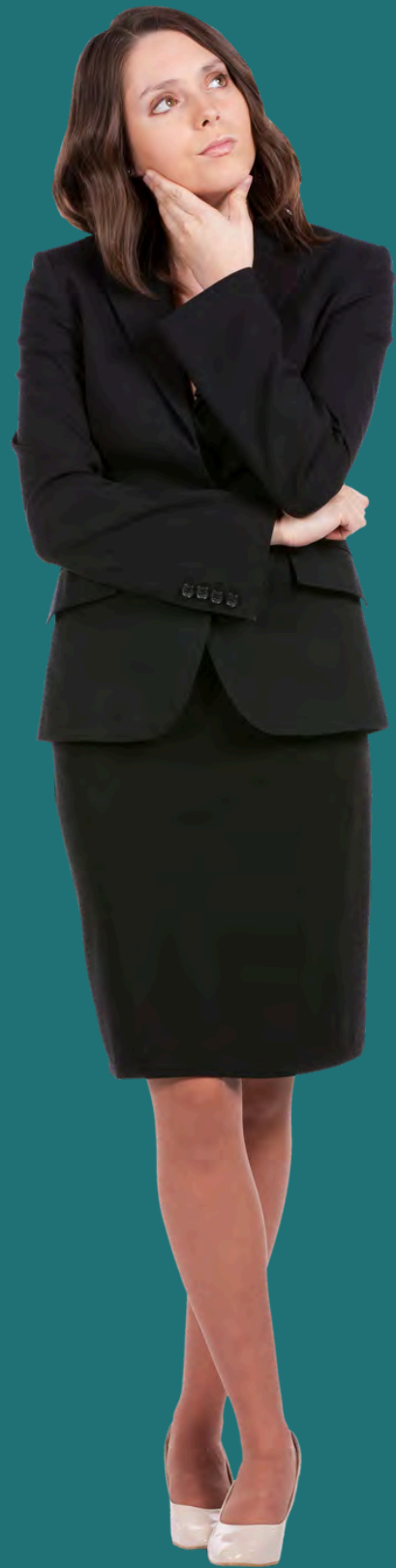
"I will"

Core Values



Systematically	Relentlessly	Inclusively	Flexibly
Strategically	Thoroughly	Transparently	Proactively
Efficiently	Excellently	Compassionately	Resiliently
Deliberately	Diligently	Collaboratively	Creatively
Consistently	Passionately	Respectfully	Boldly
Precisely	Intentionally	Genuinely	Decisively
Disciplined	Energetically	Attentively	Curiously
Methodically	Stewardly	Patiently	Optimistically

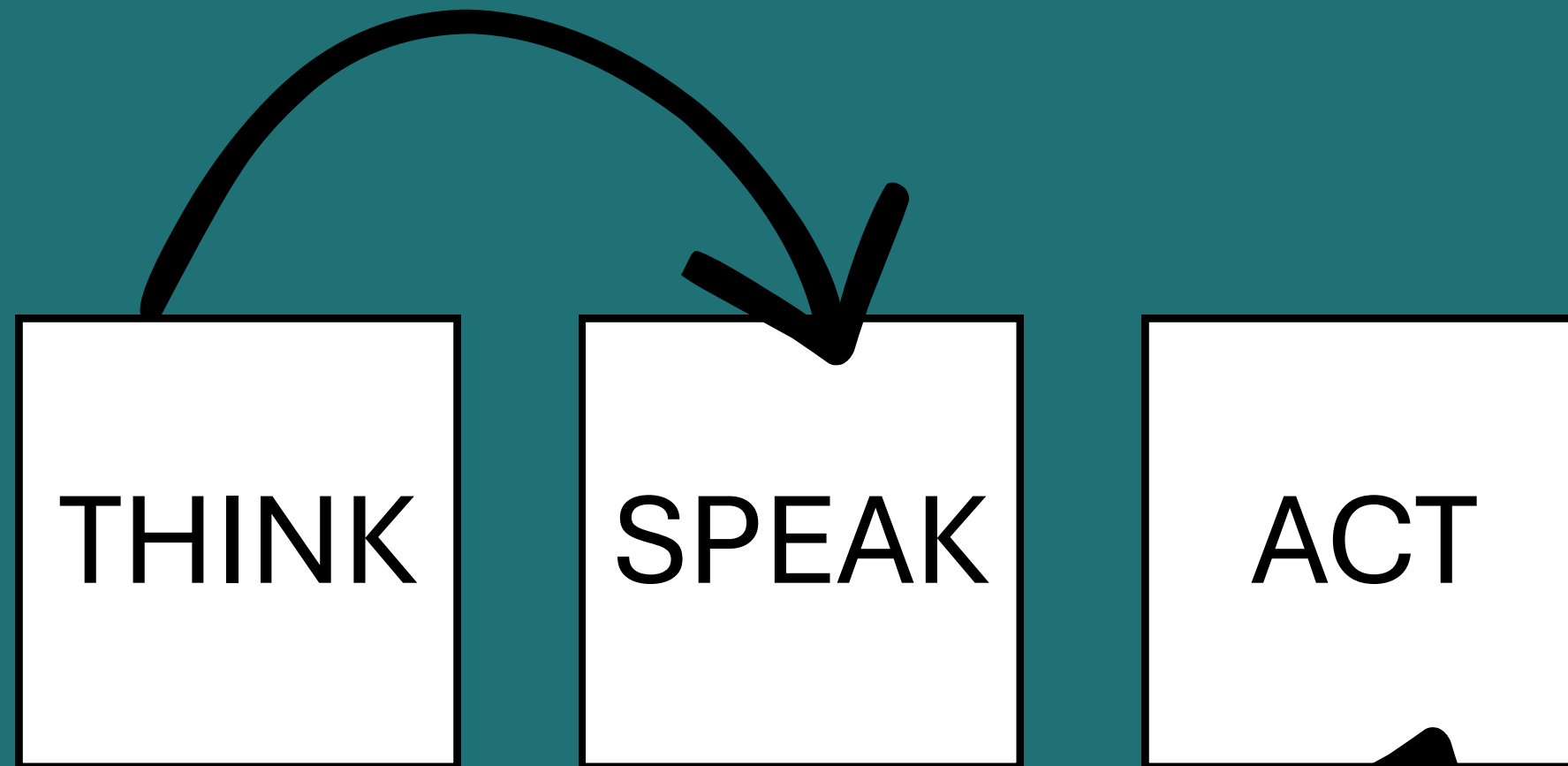
TWA Framework



TWA Framework



Influences



Influences

Thermostat



Motivation vs Commitment



Feedback



Find Me

