

INTEGRAL
players

BUILDING VIBRANT
EQUITABLE
COMMUNITIES



Together SC
ALLIES FOR GOOD

WHAT YOU CAN EXPECT

VISION

We envision a future in which SC's nonprofits and their allies are integral players in successfully building vibrant, equitable communities.

MISSION

We strengthen, unite and advance South Carolina's nonprofit and philanthropic community.

STRATEGIC POSITIONING

Helping SC's network of nonprofit and philanthropic leaders understand, adapt to, and influence our changing landscape.

CORE VALUES

PARTNERING We work in collaboration with others.

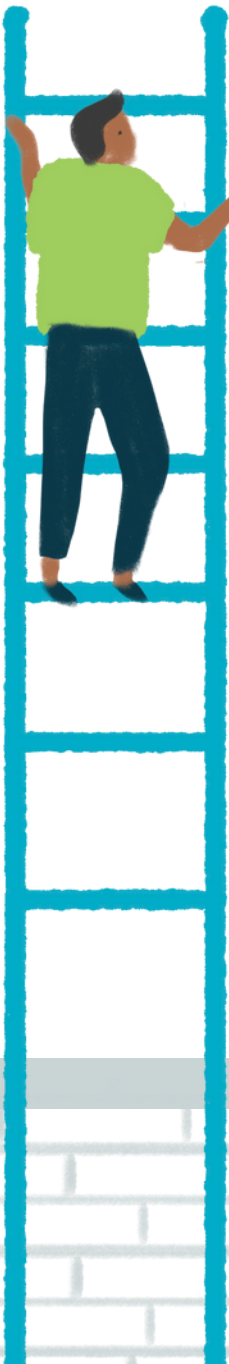
EXCELLENCE We encourage mutual accountability and strive to excel.

EQUITY We embody and champion diversity, inclusion and equity.

RE-IMAGINING We innovate in the face of change.

SOCIAL IMPACT We focus on measurable positive impact.

PEERS



2020-2025 STRATEGIC PLAN



TOGETHER WE LEARN

Promote peer to peer knowledge sharing to strengthen our competencies, engage the next generation and facilitate effective leadership transitions.

TOGETHER WE SPEAK

Amplify our community's voice through advocacy and communications to further our individual and collective efforts.

TOGETHER WE LEAD

Position Together SC and its members as thought leaders, agents of change and trusted, vital advocates for our communities.

FIVE-YEAR STRATEGIES

1. **Excel at knowledge sharing and capacity** building through supported peer-led networks.
2. **Cultivate a diverse leadership pipeline** and pathway that ensures continuity of excellence on board and staff teams across our network.
3. **Expand our value** at the local level through strategic partnerships and collaborations.
4. **Foster thought leadership** and action on race equity, diversity, and inclusion.
5. **Collaborate with advocacy allies** and experts to influence public policies that advance causes important to our members.
6. **Build a multi-dimensional communications platform** to inform, engage and connect our allies, stakeholders, and influencers.



LEXICON

VISION: A shared, aspirational picture of the future we aim to collectively create for our members and for our state.

MISSION: Our charge.

CORE VALUES: What you can expect of us. What matters most to us.

STRATEGIC POSITIONING: The core direction for the Strategic Plan.

STRATEGIC INTENTIONS: The three big bets / intentions / goals / the what.

FIVE-YEAR STRATEGIES: The primary approaches we are taking; the how.

STAFF

Madeleine McGee
President

Benjamin Bullock
Vice President & COO

Alana Jordan
Director of Development & Membership

Desmonies White
Events & Programs Manager

Brooke Robertson
Director of Marketing & Communications

Destiny Hester
Membership and Development Coordinator

PEER NETWORK LEADERS

Advocacy Allies
Chynna Phillips
Sisters of Charity
Foundation of SC
Chair

GP McLeer
Pecan Public
Relations
Facilitator

**Black Nonprofit
Leaders Group**
Trimease Carter
Central Carolina
Community
Foundation
Chair

Heather Singleton
Strategic Public
Relations Consulting
Facilitator

**Consultant
Collaborative**
Patrick Jinks
The Jinks Perspective
Chair

**Development Peer
Network**
Bryson Young
Association for the
Blind and Visually
Impaired SC
Co-Chair

Brett Wadford
Center for Heirs'
Property Preservation
Co-Chair

Equity Peer Network
Ericka Wooten
Sisters of Charity
Foundation of SC
Co-Chair

Quinn Hayes
Together Women Rise
Co-Chair

Ericka Platter
GroundWell Collective
Facilitator

**Operations Peer
Network**
Jeff Fleming
Palmetto Project
Co-Chair

**Volunteer Admin
Alliance**
Jeremy Franklin
Department of Juvenile
Justice
Chair

Mary Dell Hayes
StopGap Solutions
Facilitator

BOARD OF DIRECTORS

Paige Stephenson
President & CEO,
United Way of the Piedmont
Chair

Shawn Edwards
SPHR, SHRM-SCP
CEO, Solutions by Shawn Edwards
Vice Chair

Sherrie Snipes-Williams
CEO, Charleston Promise
Neighborhood
Treasurer / Finance Committee Chair

Nate Barber
CEO, SC Community Loan Fund

Dawn Dowden
Chief Operating Officer,
Homes of Hope

Nicole Echols
Director of External Affairs,
HopeHealth Inc

Monroe Free
President and CEO, Habitat for
Humanity of Greenville County
Immediate Past Chair

Erika Kirby
Executive Director, BlueCross
BlueShield of South Carolina
Foundation
Governance Committee Chair

Amanda Lawrence
Sr. Director for Innovation,
Partnership Excellence, StriveTogether

Stig Rasmussen
Compliance Manager, Fact Forward

Spencer Scott
Executive Director,
Florence County First Steps

Tamela Spann
Vice President, Strategic Initiatives,
Hollingsworth Funds

Andrea Tucker
CFO, Children's Trust of SC

JoAnn Turnquist
President/CEO, Central Carolina
Community Foundation

Ann Warner
Past CEO, Women's Rights
and Empowerment Network

Mac Bennett
Nonprofit Sector Consultant,
Beam and Hinge
Chair Emeritus

