

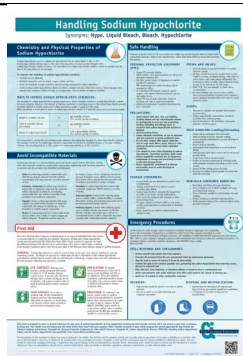
Chlorine Safety Newsletter

Connecting you to the latest in chlor-alkali training, safe handling guidance, and emergency response resources.

Nov. 2014 • www.chlorineinstitute.org • Edition 3

Handling Sodium Hypochlorite Wall Chart

Does your facility use sodium hypochlorite, commonly referred to as bleach? Chlorine Institute members have recently updated the *Handling Sodium Hypochlorite Wall Chart*, which details safe handling practices, including: personal protective equipment (PPE) use, storage guidance, avoiding incompatible materials, first aid, and emergency procedures. This poster can be [downloaded from our bookstore for free](#) or you can purchase a physical copy.



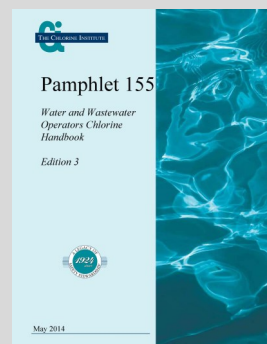
Upcoming Emergency Response Training Events

We are in the process of making the 2015 training schedule, which will include TRANSCAER® and other events. Stay tuned for dates! Also, check out our [website!](#)

Pamphlet 155: Water and Wastewater Operators

Chlorine Handbook

The latest edition of Pamphlet 155, *Water and Wastewater Operators Chlorine Handbook* is now available for free [download or physical purchase from the CI bookstore](#). Pamphlet 155 has guidance for chlorine users and details how to safely connect/disconnect cylinders and ton containers, safe transportation of chlorine, storage considerations, emergency planning guidance, and other safety-related information. This edition includes conforming changes to align with other recently updated publications and expanded content, especially in Section 3 (Chlorine Containers) and Section 4 (Responding to a Leak). Visit our bookstore to obtain your free, downloadable copy today.



Emergency Response 400A Device for Ton Containers and Chlorine Cylinders



An optional piece of equipment in the Emergency Kits "A" and "B", for chlorine cylinders and ton containers respectively, has been redesigned to accommodate standard and robust chlorine valves. Device 400A fits over the valve body and is used when a valve will not seat and continues to rotate. All chlorine valves fit into standard ton containers and cylinders, but different manufacturers have slightly different valve body styles. Device 400A now accommodates more valve styles. Note, however, that Device 400A is not DOT approved and the container will not be able to be transported with Device 400A attached. You can read more about the change in the newly released [Information Bulletin](#).

Pamphlet 1: Chlorine Basics

Pamphlet 1, *Chlorine Basics* has been updated and is [now available for free download](#) or purchase from the CI bookstore. This edition includes numerous enhancements, such as more illustrations, updated content and expanded text, especially in the following sections:

- Section 2 – Specific Manufacturing and Use Hazards
- Section 4 – Tank Car and Cargo Tank Manway Arrangements
- Section 7 – Hazards to Health and First Aid
- Section 8 – Engineering and Maintenance
- Section 10 -- Reactivity and Flammability

These changes were implemented to make the document more useful to the diverse audience that values it as a source of basic information on chlorine.