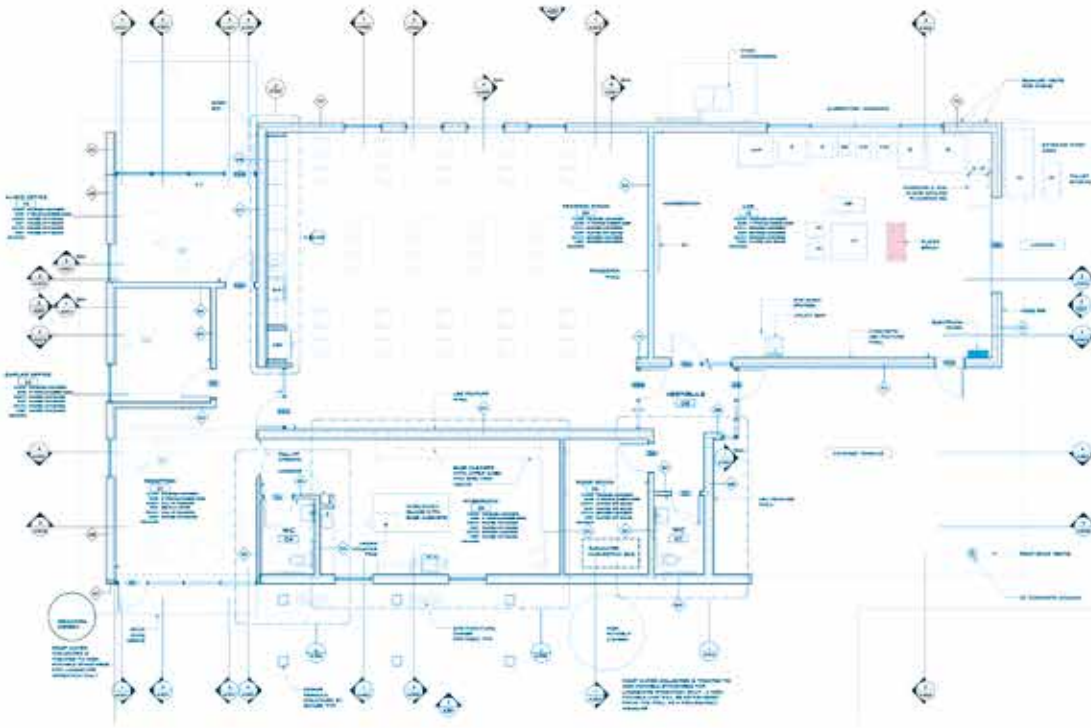


TENNESSEE CONCRETE

DIRECTORY 2021
Volume 35, No. 2

2021 MEMBERSHIP DIRECTORY

MAGAZINE



BACK ON TRACK

TCA's New Office and Lab Building to Provide A Strong Foundation for the Next Chapter of Service to Our Members




Start Date Late 2021, hopefully

TN CONCRETE ASSOCIATION
HEADQUARTERS

12872 OLD HICKORY BOULEVARD, ANTIOCH, TN 37013

ARCHITECT: DEVLIN ARCHITECTS
12872 OLD HICKORY BOULEVARD, ANTIOCH, TN 37013
PH: 615.885.1111
WWW.DEVLINARCHITECTS.COM



Scratch
here and
take a
whiff.

AHHH THAT AMAZING DRY BASEMENT SMELL.

Dry basements have a very distinct scent: nothing at all.

The Form-A-Drain® Plus drainage system and Platon® waterproofing membrane work together sub-slab and between wall and foundation to keep basements dry and fragrance-free.

It even has a 30-Year Dry Basement Guarantee.

Learn more at FormADrainSolutions.com.

Contact us at: sales@formadrainsolutions.com or 713-325-0642

30 YEAR DRY BASEMENT GUARANTEE

CONTRACTOR INSTANT REBATES

FORM-A-DRAIN®

TENNESSEE CONCRETE magazine is published for the Tennessee Concrete Association—

699 President Place, Suite 400
Smyrna, TN 37167
Phone: 615-360-7393
Fax: 615-360-6670
Website: www.tnconcrete.org

Publisher:
Kahoy Group, LLC

Editor:
Alan Sparkman

Advertising Director:
J. Morris Woods

Art Direction:
Donna G. Heninger

For advertising rates and information, contact Morris at 800.315.9950 x602.

Subscriptions in US, free upon request. Outside US, \$12 per year. To subscribe, contact TCA at the above address.

Articles appearing in Tennessee Concrete are frequently contributed by outside, independent sources. Conclusions drawn from these articles may be at variance with the opinions of our readers.

Tennessee Concrete welcomes response and rebuttal and will make every effort to print these responses. Send comments to: Editor, Tennessee Concrete, 699 President Place, Suite 400, Smyrna, TN 37167.

Tennessee Concrete and its publishers assume no liability for errors or omissions in articles or advertisements appearing in Tennessee Concrete.

© 2021 Kahoy Group, LLC

All rights reserved. The contents of this publication may not be reproduced by any means, in whole or in part, without the prior written consent of the publisher.

4
PRESIDENT'S MESSAGE

Back on Track
by Duane King

6
DIRECTOR'S MESSAGE

Dynamic Recovery
by Alan Sparkman

8
**A PRELIMINARY COMPARISON OF
PORTLAND LIMESTONE CEMENT**

A Type I/II Portland Cement in Tennessee
by Samuel Mathews, Alex Kelley, L. K. Crouch, Daniel Badoe and Alan Sparkman

16
2021 TCA DIRECTORY
Overview of TCA Services
& Staff

17
**PROGRAMS, PRESIDENTS, AND
DIRECTORS**

- 2021 TCA Promotional, Educational & Training Programs
- TCA Past Presidents
- Our Board of Directors

28
**TCA SCHOLARSHIP RECIPIENT
SENDS NOTE OF GRATITUDE**
Joseph McDaniel

29
CIM UPDATE
Advancing the Concrete Industry
Jon Huddleston, Associate Professor & CIM Director

30
TECHNICAL DIRECTOR'S MESSAGE
Important Updates: Please Read!
by John B. Pearson, P.E.

16

DIRECTORY CONTENTS
AND INFORMATION

17

PROMOTIONAL, EDUCATIONAL
& TRAINING PROGRAMS

17

2018 BOARD OF DIRECTORS
AND PAST PRESIDENTS

18

READY MIXED CONCRETE
PRODUCER MEMBERS

21

ASSOCIATE MEMBERS

23

AFFILIATE MEMBERS

24

ENGINEERING/TESTING
LABS

27

CONTRACTOR MEMBERS

2021 TCA DIRECTORY



Duane King
2021 TCA President

BACK ON TRACK

Member
association
benefits:

- network
- education
- solutions

Back on track
and looking to
nail down a
start date for
construction
in late 2021
for TCA's new
building.

MEMBERS
SUPPORTING
MEMBERS

As I write this column, TCA members are preparing to travel to the beach for the Summer Meeting with our friends and colleagues from Alabama. We missed this great opportunity to spend time with industry members last year, but we are looking forward to renewing connections, learning from our peers about the business of concrete, and, of course, a little beach time thrown-in for good measure.

Associations have always provided a place to network within an industry and many would say this is one of the most important services they provide to their members. These gatherings provide an opportunity to learn from others who are facing the same challenges and who may have found a solution that you can bring home to your company. Receiving just one good idea from a peer or a speaker can make the whole event profitable, as well as fun. We are all busy so making the time to attend can be tough, but the payoff is well worth the time.

TCA will be looking toward the future during my tenure as president. We are back on track to complete design and permitting for TCA's new office and lab building that will provide a strong foundation for TCA's next chapter of service to our members. We hope to nail down a start date for construction in late 2021, so stay tuned for more exciting updates on our new office.

Your Board will also be working to refresh our overall strategic plan during 2021. Meetings with friends and colleagues is just one thing that TCA does on behalf of all us, and we want to continue to focus our joint efforts on areas that bring value to our industry and to each member company.

If you have thoughts about our joint concrete future, I would appreciate hearing from you—please don't hesitate to reach out!



Come Join the Fun:

TCA Foundation Golf Tournament

Greystone Golf Course • October 26, 2021 • Dickson, Tennessee



Player Options

Single Player: \$150

Team of Four: \$600

Presenting sponsors have one foursome included with sponsorship.

Sponsorship Opportunities

Foundation Beverage Cart Sponsor (2) \$400

Beverage Carts sponsored by:

Durafiber[™]*inc.*

Foundation Golf Hole Sponsor \$200

Included in Presenting and Platinum sponsorship for 2021. You are encouraged, but not required, to present a giveaway or contest for the hole, and to have representatives meet all players.

Foundation PAR-3 Sponsor \$300, plus Giveaway!

Hole prize must value a minimum of \$100. Contest might include "Closest to the Pin," "Longest Putt" or whatever you choose. The Par-3 Sponsor may present their prize at the award ceremony.

Questions? Call Donna at (615) 479-0996

or email at donna@tnconcrete.org



Alan Sparkman
Executive Director

DYNAMIC RECOVERY

It's now official!

Tennessee set

a new record

for concrete

production in

2020.

The dynamic

economy that we

enjoy in the great

state of Tennessee

appears poised

to continue

the long run of

growth we have

seen since 2010.

It's now official! Tennessee set a new record for concrete production in 2020. The final numbers put our annual state production at 8.383 million cubic yards, surpassing the previous record levels of production set just before the onset of the Great Recession in 2006 and 2007. The year 2020 also marked the first time since the Great Recession that we surpassed the 8 million cubic yard mark, and our state's production of ready mixed concrete jumped 17% from 2019 levels. Overall concrete production in the US was up 1.7% from 2019 to 2020, so Tennessee's growth is far above average.

The dynamic economy that we enjoy in the great state of Tennessee appears poised to continue the long run of growth we have seen since 2010. Right now, our state is hitting on all cylinders from an economic point of view, and we continue to attract both investment and people to our state. This in-migration is fueling present growth and building jobs and opportunity that will support the next generation of Tennesseans. According to Market Graphics (our friend Edsel Charles), building permits for residential construction in the Tennessee markets he tracks are up over 27% in 2021 versus 2020 through the midpoint of the year (January - June). All of this is great news for the concrete industry as it points to strong and stable demand for our product in the foreseeable future.

All of this great news also brings with it some challenges. Those of us who have been around for a few business cycles have seen most of this before—rising materials prices, looming shortages of critical materials, likelihood of increasing regulatory burdens and a tight labor market. Some things are less familiar, foremost among them dealing

with a pandemic in addition to everything else, and I believe we are living through a permanent shift in the relationship between employers and employees.

This last one is now commonly referred to as Workforce and everyone is talking about Workforce. We had the Great Recession a little over a decade ago, and, today, we have the Great Resignation with a sizable number of employees leaving their current employers to look for what they consider a better opportunity.

According to the most recent NRMCA Driver Survey (2020), our industry continues to have a very high “churn” rate with new hires (mixer operators) each year roughly equal to the number of mixer operators leaving. The biggest reasons operators are leaving are higher pay elsewhere and inconsistent work schedules as a mixer operator. This is likely to get worse with the Great Resignation taking place in the economy as a whole.

Also of note to me in the 2020 Driver Survey was the number of operators who are retiring and a dramatic drop in the number of companies providing any kind of mentoring to new hires. The average age of mixer operators is now 47 years old, about 4 years older than the average of similar positions in all industries—this indicates that retirements are going to accelerate in the next few years. We already know from prior surveys that finding experienced mixer operators is very difficult and now we are seeing a huge drop in mentoring new drivers. I am concerned that these two trends will lead to a drop in the competency of mixer operators hauling our product from our plants to our customers.

TCA is actively working on Workforce to help our members address what is certain to be our biggest challenge in the decade of the 2020s. I invite your participation as we seek out solutions. ■



— 1225 Parkway —
Sevierville, TN 37862

DENNIE UNDERWOOD

(865) 453-4433 (phone)

(865) 428-6083 (fax)

(865) 654-2912

SICALCO, LTD is your concrete industry partner since

1979



Contact our service center @ 800-435-1919 or general offices at 630-371-2655 for customer service

Commitment
is in everything we do



At Lafarge, our commitment goes far beyond the raw materials we produce. We bring together the best solutions and materials to build more durable, compact and connected cities. And when you build better cities you get buildings, roads and infrastructure that truly reflect the changing needs of today's communities.

It's this kind of ongoing dedication that's an integral part of the Lafarge culture. And it shows. Whether it's our focus on safety, the well-being of our employees, or the satisfaction of our customers – it's all about ensuring a better quality of life for everyone involved.

To learn more about Lafarge solutions and products, including cement, concrete and aggregates, contact:

Tim Langelier, Middle TN
Tim.Langelier@LaFargeHolcim.com
www.LaFargeHolcim.com

Benoit Cotnoir
Area Sales Mgr. Southern Region



© 2016 Lafarge North America Inc., Chicago, IL

Vulcan

Materials Company

Outstanding Quality & Customer Service



Crushed Stone

Kingsport

(423) 245-4136

Knoxville

(865) 577-2511

Chattanooga

(423) 510-2600

Nashville

(615) 361-8550

Jackson

(731) 668-7357

A Preliminary Comparison of Portland Limestone Cement

With a Type I/II Portland Cement in Tennessee

INTRODUCTION AND LITERATURE REVIEW

Portland-limestone cement (PLC) has been used in the United States for several years, however, it is becoming more prevalent as of late (1). The first step in producing PLC is adding crushed, dried limestone to the grinding mill, along with portland cement clinker and gypsum. According to ASTM C150, ordinary portland cement (OPC) is limited to a maximum limestone content of 5% by mass. PLC, however, is defined by having a 5-15% limestone content by mass according to ASTM C595 (1, 2). This is an area of interest to lessen the environmental footprint that is becoming a concern for OPC production (1, 2).

Since the limestone is a softer material, it is generally more finely ground than the clinker that is produced. Limestone also requires less energy to grind due to its softness. PLC has a broader gradation, with a uniform distribution of the limestone particles, which results in better overall particle packing. The enhanced particle packing and uniform size distribution improves the PLC finish-ability and paste density (1, 3).

The strength of PLC concrete is affected by the amount of limestone substitution in the cement. It has been proven that the upper allowable limit of limestone substitution (15%), may potentially increase early-age strength resulting from the improved particle packing. The efficiency of supplementary cementitious materials (SCMs), such as fly ash and slag, can be increased with the use of PLC. The use of PLC with SCMs reduces the retardation effects of SCMs which in turn improves strength at all ages.

The fineness of the limestone plays a role in the workability of the concrete, but does not affect the water demand. Limestone generally contributes to the hydration reactions rather than being an inert filler (4). Therefore, PLCs can feasibly be used in the same situations as OPC (1).

About four percent of the world's Carbon Dioxide (CO₂) emissions are generated from producing portland cement (5). The average replacement of 10% limestone in PLC can result in around a 10% reduction in the CO₂ production as well as energy. The limestone that is used must contain a minimum of 70% Calcium Carbonate (CaCO₃) (3). CO₂ emissions from cement plants are caused by two main sources. These sources include calcination of the limestone and the consumption of fossil fuels to heat the raw materials to the required temperature to form clinker. With the substitution of 5% to 15% limestone by mass in PLC, this reduces the use of clinker. This in turn consumes less energy and reduces the CO₂ emissions and greenhouse gases. Overall, it has been proven that with the use of PLC, there can be a 12% improvement in environmental performance compared to OPC (6).

MATERIALS AND PROCEDURE

Table 1, column 1 shows the TDOT-approved materials for concrete that were used in this study, with the exception of the use of portland limestone cement (PLC) that was investigated. The proportions of the four mixtures used in this study (see Table 1) were determined through trial batching. After trialing, all four

TABLE 1. MIXTURES USED TO EVALUATE PLC

MATERIALS	CONTROL CLASS D	PLC CLASS D	CONTROL CLASS A	PLC CLASS A
Type I/II PC, (lbs/CY)	465	0	423	0
PLC, (lbs/CY)	0	465	0	423
Popular TN Class F Fly Ash, (lbs/CY)	155	155	141	141
No. 57 Stone, (SSD lbs/CY)	1849	1845	1747	1746
River Sand, (SSD lbs/CY)	1112	1109	1270	1266
Water (lbs/CY)	229.5	229.5	242.5	242.5
Design Percent Air	7	7	6	76
Air Entrainer, (oz/cwt)	2.77	3.81	2.48	2.85
Mid-Range Water Reducer (oz/cwt)	3.11	3.12	7.62	10.47
High-Range Water Reducer, (oz/cwt)	4.5	4.15	0	0

TABLE 2. COMPARISON OF PLC MIXTURES WITH TDOT CLASS D PCC REQUIREMENTS

PROPERTY	TDOT 604.03 CLASS D PCC REQUIREMENTS	CONTROL CLASS D	PLC CLASS D
Cement content (lbs/CY)	620 minimum	620	620
Water-cement ratio	0.40 max.	0.37	0.37
Percent Fine Aggregate by Total Aggregate Volume	44 maximum	38	38
Percent Class F Fly Ash Substitution (by weight) for PC	25 max.	25	25

TABLE 3. COMPARISON OF PLC MIXTURES WITH TDOT CLASS A PCC REQUIREMENTS

PROPERTY	TDOT 604.03 CLASS A PCC REQUIREMENTS	CONTROL CLASS A	PLC CLASS A
Cement content (lbs/CY)	564 minimum	564	564
Water-cement ratio	0.45 maximum	0.43	0.436
Percent Fine Aggregate by Total Aggregate Volume	44 maximum	42.5	42.5
Percent Class F Fly Ash Substitution (by weight) for PC	25 maximum	25	25

TABLE 4. TESTING PROTOCOL FOR PLC EVALUATION MIXTURES

TEST METHOD	FREQUENCY	SPECIMENS
Compressive Strength, AASHTO T22 (8)	3 @ 7, 14, 28 and 56 days	4 x 8 cylinders
Static Modulus of Elasticity ASTM C 469 (9)	1 of 3 @ 28 and 56 days	4 x 8 cylinders
Surface Resistivity, AASHTO T358 (10)	3 @ 7, 14, 28 and 56 days	56-day compressive strength 4 x 8 cylinders
Hardened Concrete Absorption, ASTM C642 (11)	3 @ 56 days	3 x 6 cylinders

mixtures met the indicated TDOT 604.03 (7) concrete plastic and hardened property requirements. Tables 2 and 3 show TDOT 604.03 (7) requirements for minimum cementing materials, w/cm ratio, fine aggregate percentage by total aggregate volume, and allowable SCM replacement percentages for TDOT Class D and A concrete, respectively. Six 0.85-cubic-foot batches of each mixture were made and tested as per Table 4 criteria.

RESULTS AND DATA QUALITY

Tables 5 and 6 show compressive strength results, result ranges, and allowable result ranges for the TDOT Class D and A mixtures, respectively. Tables 7 and 8 show static modulus of elasticity results, result ranges, and allowable result ranges for the TDOT Class D and A mixtures, respectively. Tables 9 and 10 show surface resistivity results, result ranges, and allowable result ranges for the TDOT Class D and A mixtures, respectively. Table 11 shows absorption after boiling results, result ranges, and coefficients of variation.

A Preliminary Comparison of Portland Limestone Cement

With a Type I/II Portland Cement in Tennessee

The acceptable range of the hardened property results was determined by obtaining the standard deviation or coefficient of variation from the appropriate test method and multiplying by an ASTM C670 factor for the number of test results (12). The multi-laboratory precision was used for the 4x8-inch cylinder results. This was used since AASHTO T 358 states that the preparation of cylinders by different operators would increase the variation above multi-laboratory precision criteria (13). All hardened property test results met the acceptable precision criteria except the TDOT Class D and A PLC compressive strength at 7 days and the TDOT Class A control at 7, 14, and 28 days (indicated in red in Tables 5 and 6). Unfortunately, there is no precision criteria available for hardened concrete absorptions after boiling. However, the coefficient of variation's (COV) were determined for each mixture, and these results were lower than 10%, which was deemed acceptable. The hardened property results obtained seemed to be of sufficient quality on which to base reasonable conclusions.

ANALYSIS OF RESULTS

Statistical Comparison of Results

The tests of the hypotheses of equality of corresponding mean values of concrete properties across mixes are represented in Table 12 for the various mixtures at given curing times. A statistical t-test with the assumption of unequal variances was performed. The estimated t-value was observed to be less than the critical t-value at the corresponding degree of freedom with a five percent significance level. The compared mixes that were deemed to have statistically equal values were denoted as NSD (no significant difference) in Table 12. When the estimated t-value exceeded the critical t-value at the corresponding degree of freedom with five percent significance level, the compared mixes were deemed to have significantly different values. The green shaded cells in Table 12 indicate the PLC results are statistically significantly different and superior to the original portland cement (OPC) results.

TABLE 5. TDOT CLASS D COMPRESSIVE STRENGTH RESULTS AND DATA QUALITY (PSI)

MIXTURE	BATCH 1	BATCH 2	BATCH 3	BATCH 4	BATCH 5	BATCH 6	MEAN	RANGE	ALLOWABLE RANGE
7-DAYS									
Control Class D	5500	5280	5780	5530	5730	5890	5618	610	719
PLC Class D	5790	6090	6010	5420	5330	6320	5827	990	746
14-DAYS									
Control Class D	6190	6190	6500	6090	6210	6470	6275	410	803
PLC Class D	6780	6840	6740	6280	6250	6440	6555	590	839
28-DAYS									
Control Class D	6780	6750	7110	6750	7230	7240	6977	490	893
PLC Class D	7560	7600	7700	7030	6930	7500	7387	770	946
56-DAYS									
Control Class D	7800	7610	7890	7630	7650	8200	7797	590	998
PLC Class D	8420	8780	8700	7970	8130	8500	8417	810	1077

TABLE 6. TDOT CLASS A COMPRESSIVE STRENGTH RESULTS AND DATA QUALITY (PSI)

MIXTURE	BATCH 1	BATCH 2	BATCH 3	BATCH 4	BATCH 5	BATCH 6	MEAN	RANGE	ALLOWABLE RANGE
7-DAYS									
Control Class A	3990	4250	4180	4260	4110	4720	4252	730	544
PLC Class A	4750	5430	5060	5340	4710	4860	5025	720	643
14-DAYS									
Control Class A	4650	4780	4490	4700	4460	5250	4722	790	604
PLC Class A	5840	5920	5900	5960	5590	5890	5850	370	749
28-DAYS									
Control Class A	5080	5080	5080	5120	5190	6030	5263	950	674
PLC Class A	6770	6870	6670	6830	6420	6590	6692	450	857
56-DAYS									
Control Class A	5880	5980	5910	5990	5970	6520	6042	640	773
PLC Class A	7320	7820	7850	7570	7080	7440	7513	770	962

TABLE 7. TDOT CLASS D STATIC MODULUS OF ELASTICITY RESULTS AND DATA QUALITY (10⁶-PSI)

MIXTURE	BATCH 1	BATCH 2	BATCH 3	BATCH 4	BATCH 5	BATCH 6	MEAN	RANGE	ALLOWABLE RANGE
28-DAYS									
Control Class D	3.95	4.05	4.20	3.95	4.00	4.05	4.03	0.25	0.68
PLC Class D	4.25	4.35	4.25	4.35	4.10	4.35	4.28	0.25	0.73
56-DAYS									
Control Class D	4.25	4.10	4.15	4.20	4.30	4.55	4.26	0.45	0.72
PLC Class D	4.40	4.40	4.50	4.25	4.35	4.25	4.37	0.25	0.74

TABLE 8. TDOT CLASS A STATIC MODULUS OF ELASTICITY RESULTS AND DATA QUALITY (10⁶-PSI)

MIXTURE	BATCH 1	BATCH 2	BATCH 3	BATCH 4	BATCH 5	BATCH 6	MEAN	RANGE	ALLOWABLE RANGE
28-DAYS									
Control Class A	3.60	3.75	3.55	3.55	3.60	3.90	3.66	0.35	0.62
PLC Class A	4.15	4.40	4.45	4.45	3.95	3.90	4.22	0.55	0.72
56-DAYS									
Control Class A	4.30	3.85	4.10	3.90	3.95	4.15	4.04	0.45	0.68
PLC Class A	4.30	4.15	4.30	4.30	4.00	4.25	4.21	0.30	0.72

A Preliminary Comparison of Portland Limestone Cement

With a Type I/II Portland Cement in Tennessee

Table 12 shows that in all 22 cases, or 100% of the time, PLC was superior or equal to the OPC. This would seem to be strong evidence that the PLC is as good if not better than OPC.

TDOT Specification Compliance

The 28-day compressive strength requirement for TDOT Class D concrete is 4000-psi. All compressive strength results shown in Table 5 exceed this specification at all ages. Similarly, all compressive strength results at all ages shown in Table 6 exceed the TDOT Class A specification for 28-day requirement of 3000-psi. There are no TDOT specifications for SR, static modulus of elasticity, or absorption for Class A or D concrete mixtures.

Material Cost

In order to compare costs between OPC and PLC, one would have to consider a number of variables. While PLC can cost less to manufacture due to the additional limestone, variables such as shipping methods and distances must be accounted for. Due to these ever changing variables, it is difficult to accurately estimate the costs. Ultimately, there should not be a significant cost difference.

NEED FOR FURTHER RESEARCH

The current project only compared one source of PLC. The only source of PLC currently in the state of Tennessee is located in Memphis. It seems prudent to make further comparisons with other PLC samples, possibly in other states. However, if the other PLC sources meet the same requirements as the sample used in this project, it seems reasonable to expect similar performance.

CONCLUSION

Based on the testing and statistical analysis done in this project, it appears that the PLC that was evaluated is equal to or superior in performance as a cementing material compared to OPC.

DISCLAIMER

The opinions expressed herein are those of the authors and not necessarily the opinions of the Tennessee Concrete Association (TCA).

TABLE 9. TDOT CLASS D SURFACE RESISTIVITY RESULTS AND DATA QUALITY (KILOHM-CM)

MIXTURE	BATCH 1	BATCH 2	BATCH 3	BATCH 4	BATCH 5	BATCH 6	MEAN	RANGE	ALLOWABLE RANGE
7-DAYS									
Control Class D	9.7	9.2	9.3	9.6	9.8	9.5	9.5	0.6	4.8
PLC Class D	11.6	11.6	11.4	11.0	11.7	12.2	11.6	1.2	5.8
14-DAYS									
Control Class D	10.9	10.4	10.6	11.2	11.0	10.8	10.8	0.8	5.4
PLC Class D	14.6	14.3	14.4	14.2	14.8	15.1	14.6	0.9	7.3
28-DAYS									
Control Class D	13.8	13.3	13.7	14.5	14.3	14.1	14.0	1.2	7.0
PLC Class D	21.1	21.0	20.2	20.6	23.0	23.3	21.5	3.1	10.8
56-DAYS									
Control Class D	20.8	20.4	20.3	21.2	20.7	21.3	20.8	1.0	10.4
PLC Class D	39.4	38.8	39.6	38.9	39.6	39.4	39.3	0.8	19.6

TABLE 10. TDOT CLASS A SURFACE RESISTIVITY RESULTS AND DATA QUALITY (KILOHM-CM)

MIXTURE	BATCH 1	BATCH 2	BATCH 3	BATCH 4	BATCH 5	BATCH 6	MEAN	RANGE	ALLOWABLE RANGE
7-DAYS									
Control Class A	8.6	8.3	8.5	8.5	7.7	8.2	8.3	0.9	4.2
PLC Class A	9.1	9.5	8.7	8.9	8.6	8.4	8.9	1.1	4.4
14-DAYS									
Control Class A	9.5	9.1	9.2	9.3	8.7	9.2	9.2	0.8	4.6
PLC Class A	11.3	11.7	10.5	11.0	10.9	10.5	11.0	1.2	5.5
28-DAYS									
Control Class A	12.1	11.7	11.6	11.9	11.5	11.9	11.8	0.6	5.9
PLC Class A	16.6	16.9	15.7	16.0	15.9	15.5	16.1	1.4	8.1
56-DAYS									
Control Class A	19.3	19.0	18.6	18.8	18.4	20.0	19.0	1.6	9.5
PLC Class A	29.5	30.2	27.3	27.9	29.1	28.0	28.7	2.9	14.3

TABLE 11. 56-DAY ABSORPTION AFTER BOILING RESULTS, RANGES AND COEFFICIENTS OF VARIATION

MIXTURE	BATCH 1	BATCH 2	BATCH 3	BATCH 4	BATCH 5	BATCH 6	MEAN	RANGE	COV%
Control Class D	4.09	4.21	4.32	4.37	4.58	4.45	4.34	0.49	4.0
PLC Class D	4.50	4.69	4.42	4.41	4.58	4.33	4.49	0.36	2.9
Control Class A	4.78	4.91	4.78	4.82	4.73	4.41	4.74	0.50	3.6
PLC Class A	4.58	4.69	5.14	5.03	5.06	5.21	4.95	0.63	5.2

TABLE 12. STATISTICAL ANALYSIS COMPARING PLC VS. OPC

COMPONENT	PLC CLASS D CONCRETE VS. OPC CLASS D CONCRETE	PLC CLASS A CONCRETE VS. OPC CLASS A CONCRETE
Surface Resistivity @ 7 days	Superior	Superior
Surface Resistivity @ 14 days	Superior	Superior
Surface Resistivity @ 28 days	Superior	Superior
Surface Resistivity @ 56 days	Superior	Superior
Compressive Strength @ 7 days	NSD	Superior
Compressive Strength @ 14 days	NSD	Superior
Compressive Strength @ 28 days	Superior	Superior
Compressive Strength @ 56 days	Superior	Superior
Static Modulus of Elasticity @ 28 days	Superior	Superior
Static Modulus of Elasticity @ 56 days	NSD	NSD
Absorption after Boiling	NSD	NSD

A Preliminary Comparison of Portland Limestone Cement

With a Type I/II Portland Cement in Tennessee

REFERENCES

1. Goguen, Claude. "Portland-Limestone Cement." *National Precast Concrete Association*, Precast Inc. Magazine, 2 June 2014, precast.org/2014/06/portland-limestone-cement/.
2. "The Advantages of Portland-Limestone Cement." *Concrete-construction.net*, Concrete Production & Precast, 12 Aug. 2014, www.concreteconstruction.net/concrete-production-precast/the-advantages-of-portland-limestone-cement_o.
3. MCC Research Committee. "LITERATURE REVIEW PORTLAND-LIMESTONE CEMENT." *Mnconcretetecouncil.com*, Aug. 2013, mnconcretetecouncil.com/index.php/download_file/view/251/325.
4. Tsvilis, S., et al. "A Study on the Parameters Affecting the Properties of Portland Limestone Cements." *Cement and Concrete Composites*, vol. 21, no. 2, 1999, pp. 107–116., doi:10.1016/s0958-9465(98)00031-6.
5. Robbie M. Andrew. "Global CO₂ Emissions from Cement Production." *Earth System Science Data*, vol. 10, no. 1, 2018, pp. 195–217, DOI: 10.5194/essd-10-195-2018.
6. Pearson, Candace. "Switching to Portland Limestone Cement Could Reduce Emissions." *BuildingGreen*, BuildingGreen, 2 Apr. 2014, www.buildinggreen.com/newsbrief/switching-portland-limestone-cement-could-reduce-emissions.
7. Tennessee Department of Transportation, Standard Specifications for Road and Bridge Construction (Section 604.03), January 1, 2015.
8. AASHTO T 22-10(2011)¹. "Standard Method of Test for Compressive Strength of Cylindrical Concrete Specimens", American Association of State Highway and Transportation Officials. Standard Specifications for Transportation Materials and Methods of Sampling and Testing Part 2A, 33rd Edition 2013.
9. ASTM Standard C469, 2014, "Standard Test Method for Static Modulus of Elasticity and Poisson's Ratio of Concrete in Compression," ASTM International, West Conshohocken, PA, 2014, DOI: 10.1520/C0469_C0469M-14, www.astm.org.
10. AASHTO T 358-17. "Standard Method of Test for Surface Resistivity Indication of Concrete's Ability to Resist Chloride Ion Penetration." American Association of State Highway and Transportation Officials. Provisional Standards, 2017 edition, April 2017.
11. ASTM Standard C642, 2013, "Standard Test Method for Density, Absorption, and Voids in Hardened Concrete." ASTM International, West Conshohocken, PA, 2013, DOI: 10.1520/C0642-13, www.astm.org.
12. ASTM Standard C670, 2015, "Standard Practice for Preparing Precision and Bias Statements for Test Methods for Construction Materials." ASTM International, West Conshohocken, PA, 2015, DOI: 10.1520/C0670-15, www.astm.org.
13. AASHTO T 358-17. "Standard Method of Test for Surface Resistivity Indication of Concrete's Ability to Resist Chloride Ion Penetration." American Association of State Highway and Transportation Officials. Provisional Standards, 2017 edition, April 2017.

ACKNOWLEDGEMENTS

The authors would like to thank David Parker of Lafarge Holcim and Denny Lind of BASF for their extensive donations of PLC and chemical admixtures to the project. Also, the authors would like to thank Martin Medley for donations of materials used in this project. The authors appreciate the procurement help provided by TCA.

In addition, the authors would like to thank Mark Davis and Perry Melton for their patience and skill in fabrication, maintenance, and repair of the equipment.

Further, we appreciate the financial support of the TTU Department of Civil and Environmental Engineering.

Finally, the authors appreciate the administrative, financial and information technology support provided by the TTU Center for Energy Systems Research, particularly Dr. Satish Mahajan, Robert Craven, Etter Staggs, and Anysa Milum.

AUTHOR INFORMATION

Samuel Mathews, E.I. is a civil engineering master's student at Tennessee Technological University.

Alex Kelley is a civil engineering master's student at Tennessee Technological University.

L. K. Crouch, Ph.D., P.E. is a professor of Civil Engineering at Tennessee Technological University.

Daniel Badoe, Ph.D. is a professor of Civil Engineering at Tennessee Technological University.

Alan Sparkman, CAE, LEED AP, CCPf, is executive director of the Tennessee Concrete Association.

Placing Pervious Concrete

Pervious Concrete Allows Rainwater to seep into the ground. It is instrumental in recharging groundwater and reducing storm water runoff.

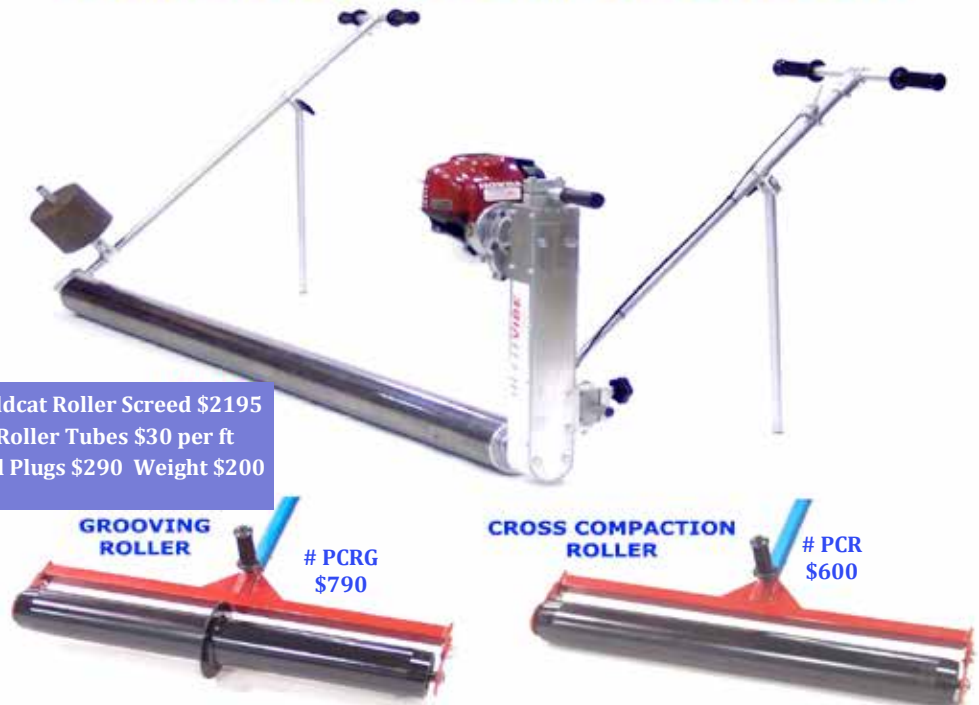


**Pervious is a Special Mix...
It Requires Special Tools to Place It**

WILDCAT ROLLER SCREED

**M
U
L
T
I**
VIBE

Wildcat Roller Screed \$2195
Roller Tubes \$30 per ft
End Plugs \$290 Weight \$200



**GROOVING
ROLLER**

PCRG
\$790

**CROSS COMPACTION
ROLLER**

PCR
\$600

COMPLETE PERVIOUS PACKAGE

"The Wildcat Screed has become my preferred placement method because of it's lightweight, easy to use, and produces a great finish."

Sarah Egan
TN Concrete Association
NRMCA Certified Pervious Concrete
Installer

The Wildcat Roller Screed is the easiest to use on the market and the most economical. It is also an ideal tool for concrete sidewalks, walking trails and golf cart paths.

We welcome comparison to any other brands.

For More Info Call Toll Free 877-220-6652

www.multivibe.com

2021 Tennessee Concrete Association Membership Directory



Overview of TCA Services and Staff..... 14

TCA Promotional, Educational and Training Programs..... 15

2021 Board of Directors 15

Past Presidents 15

Ready Mixed Concrete Producers 16

Associate Members 20

Affiliate Members..... 22

Engineers/Testing Labs 24

Concrete Contractors..... 26



aci certification

To verify an individual's ACI Certifications, visit:

<http://bit.ly/2adlqlf>

TCA Services & STAFF

The Tennessee Concrete Association (TCA) was founded in 1986 to promote the increased use of ready mixed concrete in Tennessee. Our mission statement is: "The TCA is the unified voice for the concrete industry to improve our image and awareness through advocacy, promotion and education that support our members, our community, and our future." We work to fulfill this mission in all of our activities. We invite you to join us in building a concrete industry we can all be proud of. Supported by membership dues and program income, TCA is governed by a 12 member Board of Directors representing all three membership categories (Producers, Associates, and Affiliates). The board includes 10 ready-mixed producer members who direct local promotional programs in each of our three regions.

Association STAFF



Alan Sparkman
Executive Director



Darla Sparkman
Director of Certifications



Donna Thompson
Director, Marketing & Meetings



John E. Pearson, P.E.
Director, Technical Services



Julia Hudson
Online Education Coordinator

2021 TCA PROGRAMS

Annual Convention – Brings all members together to celebrate the year's accomplishments and to learn about the latest issues.

Tennessee Concrete Magazine – Published 3 times annually with research reports and current industry articles.

Membership Directory – Published annually with information advertising your company.

Member Updates – Throughout the year (via email), to keep you informed of Association programs, industry activities, and promotional events.

Concrete Excellence Awards – Design, Construction and Environmental awards for projects and plants across Tennessee.

Product Demonstrations & Seminars – Decorative, Pervious, Insulated Concrete Forms, Whitetopping, Flowable Fill and more

Statewide High School Concrete Essay Contest

Trade Show Displays

Concrete Career Academy – Our new online learning system offers prep courses to help concrete professionals prepare for certification courses in flatwork, and more. <https://www.pathlms.com/ccca>

TCA Website – www.tnconcrete.org and visit us on Facebook at <https://www.facebook.com/tnconcrete/>

Training and Certification – This year John Pearson, P.E., conducted training review sessions for various ACI certifications and exams and training were also offered in the following:

- ACI Field Testing Technician, Grade 1
- ACI Flatwork Finisher & Technician
- ACI Decorative Concrete Flatwork
- ACI Adhesive and Anchor Inspector
- ACI Aggregate/Soils Bast Testing Tech 1 & 2
- ACI Concrete Laboratory Testing Technician Grade 1 & 2
- ACI Concrete Construction Special Inspector
- ACI Concrete Strength Testing Technician
- ACI Concrete Transportation Construction Inspector
- ACI Self-Consolidating Concrete Testing Technician
- NRMCA Certified Driver Training
- NRMCA Certified Concrete Production Technologist
- NRMCA Pervious Installer Certification
- NRMCA Certified Concrete Sales Professional
- NRMCA Volumetric Mixer Operator Certification

Zoom Virtual Meetings – Experts from various backgrounds present on technical topics from IDFs to business accounting.

PRESIDENTS

1986-1987
Reid Brown, PH.D.
Vulcan Materials
Chattanooga

1988
Richard Jones, Jr.
Southdown, Inc.
Knoxville

1989
Bob Mayfield
Forcum-Lannom
Dyersburg

1990
Craig Kirchoff
Lone Star Industries
Nashville

1991
Joe Fowler
American Limestone Co.
Knoxville

1992
Ernie Walker, Sr.
Transit-Mix Concrete
Johnson City

1993-1994
E.H. (Sonny) Garrott III
Garrott Bros. Continuous Mix
Galatin

1995-1996
Joe Bigford
City Concrete Co.
Jackson

1997-1998
Carl Storms
Concrete Materials Inc.
Morristown

1998-1999
Joe Fulks
Harper Construction
Shelbyville

1999-2000
Mike Carrier
Carrier Concrete
Memphis

2000-2001
Walter Law
Ready Mix Concrete
Maryville

2001-2002
Bob Haldrup
Irving Materials, Inc.
Nashville

2002-2003
John Loven
Loven Ready Mix
Greeneville

2003-2004
Steve Herron
Metro Ready Mix
Nashville

2004-2005
Greg Garren
Union Concrete
Maynardville

2005-2006
Jim Hughes
Builders Supply Co.
Cookeville

2006-2007
Rick Odle
Southern Concrete
Products
Jackson

2007-2008
Dennie Underwood
Blalock Ready Mix
Sevierville

2008-2009
John Curtis
Irving Materials, Inc.
Nashville

2009-2010
Phillip Palczar
City Concrete
Memphis

2010-2011
Andrea Childress
Childress Concrete Co.
Lewisburg

2011-2012
Steve Smith
A&W Ready Mix Concrete
Kodak

2012-2013
Mike Zagula
Metro Ready Mix Concrete
Co.

2013-2014
Derris Johns
Mid-South Concrete

2014-2015
Bate Bond
B.T. Redi-Mix

2015-2016
Bobby Crass
C&C Concrete Products

2016-2017
Tonya Alexander
Irving Materials, Inc.

2017-2018
Cole Dodds
Southern Concrete Products

2018-2019
Tim Costo
Sequatchie Concrete

2019-2020
Wes Blalock
Blalock Ready Mix

Our Board of DIRECTORS

President

DUANE KING
Screaming Eagle Ready Mix

Vice President

SAM PITTENGER
Harrison Construction

Secretary/Treasurer

SHELLEY PARHAM
Ready Mix USA

Ready Mixed Directors

CRIS MABBITT
IMI

CHARLEY LAY
Lambcon

JOSH EVANS
Tri-State Delta

MATT DRYDEN
Pyles Concrete

Associate
Directors Associate

STEWART PARKER
Continental Cement

REBEKAH BOMER
Vulcan

JACLYN STREETER
Master Builders

Affiliate
Directors Associate

MATT PARK
Solomon Colors

2021 TCA Membership Directory

Ready Mixed Concrete Producer Members

ABERNATHY CONCRETE CO., INC.

PO Box 243
Pulaski, TN 38478
Primary Contact: Bill Abernathy
Phone: (931) 363-1527
abernathyconcrete@charter.net
Products/Services: Ready Mixed Concrete, TDOT Certified Concrete Batch Plant, Course Aggregates, Sand

BLALOCK READY MIX

PO Box 4750
Sevierville, TN 37864
Primary Contact: Wesley Blalock
Phone: (865) 453-4433
wesblalock@blalockandsons.com
www.blalockcompanies.com
Products/Services: Ready Mix Concrete, Concrete Pumping, Redi-Rock Retaining Wall System, NRMCA Certified Plants, NCPA Certified Precast Plant

Additional Information:
Dennie Underwood, Technical Services Mgr.

Boys Creek Plant

4265 Boys Creek Hwy
Sevierville, TN 37865
Phone: (865) 453-4433

Kodak Plant

3340 S. Snyder Rd.
Kodak, TN 37876
Phone: (865) 453-4433

Kyker Ferry Plant

151 Kyker Ferry Rd
Kodak, TN 37764
Phone: (865) 453-4433

Pigeon Forge Dual Alley Plant

1836 Ridge Rd.
Pigeon Forge, TN 37863
Phone: (865) 453-4433

Seymour Plant

105 Clear View Dr.
Seymour, TN 37865
Phone: (865) 453-4433

BRADLEY CONCRETE CO.

PO Box 3022
Cleveland, TN 37320
Primary Contact: Charlie Lay
Phone: (877) 541-4542
clay@lambcon.us
www.lambcon.us

Products/Services: Ready Mix Concrete Chattanooga, Cleveland, Charleston, Knoxville, Lenoir City, Athens

BUILDERS SUPPLY CO.

50 Scott Ave.
Cookeville, TN 38501
Primary Contact: Clark Simpson
Phone: (931) 526-9704
clark@bscblock.com
www.bscblock.com
Products/Services: Ready Mix Concrete, Building Materials, Concrete Block Manufacturer, Brick & Lumber.

C & C CONCRETE PRODUCTS, INC.

193 Towe String Rd.
Jacksboro, TN 37757
Primary Contact: Bobby Crass
Phone: (423) 562-7425
bobbydcross@aol.com
www.c-cconcrete.com
Products/Services: Ready Mix Concrete, ICF's, Block, ACI Certified Personnel, NRMCA Certified, Fiber, Rebar, Masonry Supplies & Aggregates

C & C REDI-MIX INC.

5710 Harriman Hwy
Oliver Springs, TN 37840
Primary Contact: Tony Crass
Phone: (865) 435-1445
www.ccreadymix.com
Products/Services: Ready Mix Concrete Services

CHANDLER CONCRETE CO. INC

PO Box 131
Burlington, NC 27216
Primary Contact: Ted Chandler
Phone: (336) 226-1181
ted.chandler@chandlerconcrete.com
www.chandlerconcrete.com
Products/Services: Ready Mix Concrete Services, Block, Hardscape & Masonry Products, Building Supply Products

Additional Information:

Boone
805 State Farm Rd Ste. 203
Boone, NC 28607
Sam Thompson sam.thompson@chandlerconcrete.com
Phone: (828) 963-0583

CUMBERLAND SUPPLY CO. INC.

PO Box 216
Carthage, TN 37030
Primary Contact: Phillip Hudson, Jr.
Phone: (615) 735-1786
p1b2hudson@yahoo.com
www.cumberlandsupplytn.com
Products/Services: Ready Mix Concrete, TDOT Certified, Brick, Block, Lumber, Hardware, Masonry & Millwork

DELTA INDUSTRIES, INC.

1995 Nonconah Blvd
Memphis, TN 38132
Primary Contact: Josh Evans
Phone: (901) 396-8900
jevans@delta-ind.com
www.delta-ind.com
Products/Services: Ready Mix Concrete Producer, Ready Mix Concrete Supplier
Additional Information:

Cordova

1323 Rebel Rd.
Cordova, TN
Phone: (901) 396-8900

DIXIE READY-MIX CONCRETE CO., INC.

1414 Old Jacksboro Hwy
La Follette, TN 37766
Primary Contact: Raymond Henson
Phone: (423) 562-2277
Products/Services: Ready-Mix Concrete, Wire Mesh-Rebar, Septic Tanks, Wall Blocks, Masonry Sand

HARRISON CONSTRUCTION CO.

4817 Rutledge Pike
Knoxville, TN 37914
Primary Contact: Stephen Lowrey
Phone: (865) 637-1770
dbrown@harrisoncc.com
www.harrisoncc.com
Products/Services: Ready Mix Services and Aggregate Sales

Additional Information:

Dandridge
1070 Epco Dr.
Dandridge, TN 37725
Harriman
2412 S. Roane St.
Harriman, TN 37748
Kingston
730 Gallaher Rd
Kingston, TN 37763
Knoxville
1730 Transport Lane
Knoxville, TN 37924
Lenoir City
200 S. Nelson St.
Lenoir City, TN 37771
Lovell Road
730 Lovell Rd.
Knoxville, TN 37932
Maryville
1921 S. Court St.
Maryville, TN 37803
Morristown
1527 W. 1st N. St.
Morristown, TN 37814
Oakridge
250 Union Valley Rd
Oak Ridge, TN 37830
Sweetwater
1921 Sands Rd
Sweetwater, TN 37874
Louisville
1717 New Topside Rd
Louisville, TN 37777

IRVING MATERIALS INC

2001 Antioch Pike
Nashville, TN 37013
Primary Contact: Tonya Alexander
Phone: (615) 884-4935
cris.mabbitt@irvmat.com
www.irvmat.com
Products/Services: Ready Mixed Concrete, Related Products, Aggregate, Sand & Pervious Concrete
Additional Information:
Contacts in TN: Cris Mabbitt, Mike Baldoni, Phillip Hackett, Amanda Schweighardt
Clarksville
261 Needmore Rd
Clarksville, TN 37042
Phone: (931) 552-6026
Columbia
4616 Hardison Mill Rd
Columbia, TN 38401
Phone: (931) 540-8248

Ready Mixed Concrete Producer Members

Cookeville

2800 Dacco Quarry Rd
Cookeville, TN 38506
Phone: (931) 526-6107

Crossville

252 Maryette Ave.
Crossville, TN 38555
Phone: (931) 484-5588

Dickson

1550 Old Columbia Rd
Dickson, TN 37055
Phone: (615) 740-7001

Dover

646 Highway 79
Dover, TN 37058
Phone: (931) 232-7001

Fayetteville

8 Cessna Road
Fayetteville, TN 37334
Phone: (931) 438-7337

Franklin

515 Downs Blvd.
Franklin, TN 37064
Phone: (615) 224-9000

Goodlettsville

109 Long Dr.
Goodlettsville, TN 37072
Phone: (615) 219-0966

Jamestown

315 Alf Threet Rd
Jamestown, TN 38556
Phone: (931) 879-5098

Lawrenceburg

2112 Helton Dr.
Lawrenceburg, TN 38464
Phone: (931) 762-6409

Lebanon

400 S. College St.
Lebanon, TN 37087
Phone: (615) 444-0454

Livingston

220 School Mtn. Rd
Livingston, TN 38570
Phone: (931) 823-5060

Manchester

213 E. Coffee St.
Manchester, TN 37355
Phone: (931) 723-8747

Morrison

5445 Manchester Hwy
Morrison, TN 37357
Phone: (931) 815-1070

Mt. Juliet

445 Industrial Dr.
Mt. Juliet, TN 37122
Phone: (615) 758-5687

Murfreesboro

5024 Old Nashville Hwy
Murfreesboro, TN 37129
Phone: (615) 907-0020

Nashville

1433 Cowan St.
Nashville, TN 37207
Phone: (615) 256-6821

Nashville

6616 Robertson Rd
Nashville, TN 37209
Phone: (615) 356-9301

Nashville

151 Bush Rd
Nashville, TN 37217
Phone: (615) 367-2918

Smithville

805 S. College St.
Smithville, TN 37166
Phone: (615) 597-4149

Sparta

171 imix Rd
Sparta, TN 38583
Phone: (931) 836-2576

Spring Hill

758 Beechcroft Rd
Spring Hill, TN 37174
Phone: (931) 486-9072

Springfield

4277 US-431
Springfield, TN 37172
Phone: (615) 219-0966

Tullahoma

519 Vollney St
Tullahoma, TN 38388
Phone: (931) 455-5432

Winchester

612 David Crockett Hwy
Winchester, TN 37398
Phone: (931) 967-1738

LAMBCON INC.

PO Box 5148
Cleveland, TN 37320
Primary Contact: Charlie Lay
Phone: (877) 541-4542
clay@lambcon.us

www.lambcon.us

Products/Services: Ready Mix Concrete - Chattanooga, Athens, Cleveland, Knoxville, Lenior City

MEMPHIS READY MIX

1029 John A. Denie Rd.
Memphis, TN 38134
Primary Contact: Cory Stultz
Phone: (901) 373-1791
kendall.stultz@buzziunicemusa.com
www.readymixmemphis.com

Products/Services: Ready Mixed Concrete & Related Concrete Products Serving the Greater Memphis & Northern Mississippi Area

MID SOUTH CONCRETE INC.

PO Box 1220
Pulaski, TN 38478

Primary Contact: Meredith Walker
Phone: (931) 363-0690
midsouth@smwb.net

Products/Services: Custom Design Ready Mix Concrete, Concrete Related Accessories, Materials, Aggregates, & Culverts

Additional Information:

Leoma

2408 Hwy 43
Leoma, TN 38468
Phone: (931) 363-0690

Pulaski

1750 Braly Lane
Pulaski, TN 38478
Phone: (931) 363-0690

MID-STATE MOBILE CONCRETE, INC.

3636 Central Pike
Hermitage, TN 37076

Primary Contact: Matt Weathers
Phone: (615) 574-0061
midstatemobileconcrete@gmail.com

www.midstatemobileconcrete.com

Products/Services: Mobile Ready Mixed Concrete Services & Concrete Pumping Services, Pervious Concrete, Concrete Finishing

MID-WAY CONCRETE PRODUCTS, INC.

128 Natchez Trace Rd.
Camden, TN 38320

Primary Contact: Jacob Percy
Phone: (731) 584-6991
midwayconcreteproducts@gmail.com

Products/Services: Ready Mixed Concrete, Masonry Block Producer & Tool Supplies, Concrete Reinforcement

Additional Information:

McKenzie

24 Oak St.
McKenzie, TN 38201
Phone: (731) 352-3850

MOBILE MATERIALS NASHVILLE, LLC

PO Box 90583
Nashville, TN 37209
Primary Contact: Scott D Eller
Phone: (615) 414-2591
scotteller@

mobilematerials-nashville.com
www.mobilematerials-nashville.com

Products/Services: Residential, Commercial, Shotcrete, Flow Fill. High Early Strength. NRMCA Volumetric Mixer Certified

NEWPORT PAVING & READY MIX

PO Box 374
Newport, TN 37822

Primary Contact: Joe Malone
Phone: (423) 623-8671

wesblalock@blalockandsons.com

www.blalockcompanies.com
Products/Services: Ready Mix Concrete, NRMCA Certified Plant & Fleet, Environmental Product Declaration Available

ORGAIN READY MIX CONCRETE CO. INC.

240 Kraft St.
Clarksville, TN 37041

Primary Contact: Toby Hunter
Phone: (931) 647-1597

toby@orgainreadymix.com
www.orgainreadymix.com
Products/Services: Ready Mix Concrete Services

Additional Information:

Murfreesboro

Primary Contact: Jackie Beavers

450 Middle TN Blvd.
Murfreesboro, TN 37129
Phone: (615) 617-3506

PAVEMENT RESTORATIONS, INC.

10162 Stinson St.
Milan, TN 38358

Primary Contact: Casin Swann
Phone: (731) 238-2119

casin@gotpotholes.net
www.gotpotholes.net
Products/Services: Volumetric Concrete Supply, NRCMA Volumetric Mixer Certified, Concrete Construction Including Curb, Gutter & Sidewalks



2021 TCA Membership Directory

Ready Mixed Concrete Producer Members

Additional Information:

Knoxville

5651 S. National Dr.
Knoxville, TN 37914
Phone: (865) 724-3882

Madison

41 Fant Industrial Dr.
Madison, TN 37115
Phone: (615) 663-9011

POTTER SOUTH EAST, LLC

511 E. Monticello Pike
Huntsville, TN 37756
Primary Contact: Dwayne Potter
Phone: (423) 663-8222
pottersoutheastllc@gmail.com

Products/Services: Heavy Highway Construction Co. with Centralized Efforts in Road & Bridge Construction serving TDOT Projects in TDOT Region 1

Additional Information:

Pioneer

170 Royal Lane
Pioneer, TN
Phone: (423) 494-1117

PYLES CONCRETE, INC.

PO Box 639
Columbia, KY 42728
Primary Contact: Jacob Pyles
Phone: (615) 540-8484
jacobpyles@pylesconcrete.com
Products/Services: Ready Mix Concrete Producer

READY MIX USA EAST TN

PO Box 2389
Knoxville, TN 37901
Primary Contact: Joe Fowler
Phone: (865) 573-4501
josephc.fowleriii@rmusa.cemex.com
www.cemex.com

Products/Services: Ready Mixed Concrete Sales: Shelley Parham-Tri-Cities (423)744-0022, Javier Melendez-Chattanooga (423)595-0954, Derek Moore-Knoxville (865)210-0598, Mark Doty-Knoxville (423)327-1395

Additional Information:

Contact for Chattanooga market -Lee Smith (404) 423-8724
501 Janie Hammitt Dr.
Bristol, VA 24201
Phone: (276) 669-3107

Chattanooga

604 Hudson Road
Chattanooga, TN 37405
Phone: (423) 892-6444

Chattanooga

2 Pelican Dr. (River Plant)
Chattanooga, TN 37416
Phone: (423) 892-6444

Dalton

419 N. Selvidge St.
Dalton, GA 30720
Phone: (706) 278-6044

Gray

102 Watertank Rd.
Gray, TN 37615
Phone: (423) 246-7701

Greeneville

1532 Industrial Rd.
Greeneville, TN 37745
Phone: (423) 639-2041

Kingsport

1543 S. Wilcox Dr.
Kingsport, TN 37660
Phone: (423) 246-7701

Knoxville

2200 Neyland Dr.
Knoxville, TN 37916
Phone: (865) 544-0320

Knoxville

10509 Lexington Dr.
Knoxville, TN 37932
Phone: (865) 573-4501

Lafayette

22920 Hwy 193
Lafayette, GA 30728
Phone: (706) 278-6044

Maynardville

762 Maynardville Hwy.
Maynardville, TN 37807
Phone: (423) 587-2050

Morristown

663 South Sugar Hollow Rd.
Morristown, TN 37813
Phone: (423) 587-2050

New Tazewell

PO Box 1050
New Tazewell, TN 37824
Phone: (865) 573-4501

Rockford

547 National Dr.
Rockford, TN 37853
Phone: (865) 573-4501

RIVER CITY CONCRETE, INC.

9160 Hwy 128 South
Savannah, TN 38372
Primary Contact: Wade Williams
Phone: (731) 925-0271
wadew@rivercity-concrete.com

www.rivercity-concrete.com
Products/Services: Ready Mix Concrete, Concrete Blocks, Forming Supplies, Concrete Reinforcing Products, Dump Truck Services, Stone Placement
Additional Information:

Selmer

850 Mulberry Ave.
Selmer, TN 38375
Phone: (713) 645-7903

Waynesboro

1041 Lawrenceburg Hwy
Waynesboro, TN 38485
Phone: (931) 722-3816

SCREAMING EAGLE READY MIX

490 Barge Point Rd
Clarksville, TN 37042
Primary Contact: Duane E. King
Phone: (931) 553-4101
dking.screamingeagle@yahoo.com
www.screamingeaglereadymix.com

Products/Services: Concrete, Decorative Sealers & Acid Stains, Powder Release & Concrete Tools

Additional Information:

Clarksville

1040 International Blvd.
Clarksville, TN 37040
Phone: (931) 553-4101

SOUTHERN CONCRETE PRODUCTS, INC.

PO Box 1256
Jackson, TN 38302
Primary Contact: Rick Odle
Phone: (731) 422-3358
scpodle@yahoo.com
www.southernconcrete.com
Products/Services: Ready Mix Concrete, Concrete Fence, Building Materials, Parking Bumpers & Septic Tanks, Pervious

Additional Information:

Bolivar

18260 Hwy 125 South
Bolivar, TN 38008
Phone: (731) 422-3358

Dyersburg

1705 Tennyson Ave.
Dyersburg, TN 38024
Phone: (731) 422-3358

Henderson

745 US Hwy 45 S.
Henderson, TN 38340
Phone: (731) 422-3358

Jackson

860 Westover Rd
Jackson, TN 38301
Phone: (731) 422-3358

Jackson

86 United Dr.
Jackson, TN 38305
Phone: (731) 422-3358

Lexington

266 E. Church St.
Lexington, TN 38351
Phone: (731) 968-2537

Milan

2500 Graball St.
Milan, TN 38358
Phone: (731) 422-3358

Paris

535 Russell St.
Paris, TN 38242
Phone: (731) 642-6672

Union City

106 Barham Rd.
Union City, TN 38261
Phone: (731) 885-7060

TWIN K ENTERPRISES, LLC

16906 Alberta St.
Oneida, TN 37841
Primary Contact: Kelley Krahn
Phone: (423) 569-6341
kelley@twinkenterprises.net
Products/Services: Ready Mix Concrete, TDOT & KYTC Certified, Concrete Pumping, Septic Tanks, Aggregate, Precast Products, Concrete Supplies
Additional Information:

Dayton

220 Hurst Ln.
Dayton, TN 37321
Phone: (423) 570-0687

Decatur

1768 TN-68
Decatur, TN 37322
Phone: (423) 332-6002

Harriman

348 Poland Hollow Rd.
Harriman, TN
Phone: (865) 234-7114

Oneida

16906 Alberta St.
Oneida, TN
Phone: (423) 569-6341

Soddy Daisy

210 Harrison Ln.
Soddy Daisy, TN 37379
(423) 332-6002

Wartburg

3612 Morgan Co Hwy
Wartburg, TN

VANHOSECO READY MIX

244 Blair Bend Dr.
Loudon, TN 37774
Primary Contact: Jeff VanHoose
Phone: (865) 458-3998
jvanhoose@vanhooseco.com
www.vanhooseco.com
Products/Services: Concrete Homes, Roller Compacted Concrete, Self Consolidating Concrete, Pervious Concrete, Precast Wall Systems, Structural Precast Concrete, On Site Certified Lab, Underground Storm Water Management Systems

VOLUNTEER CONCRETE

PO Box 682423
Franklin, TN 37068
Phone: (931) 364-5900
www.volunteerconcrete.com
Products/Services: Ready Mix Producer, Concrete Pumping, Aggregates, Paving & Plant NRMCA Certified
Additional Information:

Lewisburg

770 Hwy 99
Lewisburg, TN
Phone: (931) 364-5900

WARRIOR PRECAST

PO Box 168
Rock Island, TN 38581
Primary Contact: Stacey Harvey
Phone: (931) 686-3240
stacey.harvey@superiorwallstn.com
www.warriorprecast.com
Products/Services: Precast Concrete Structural & Architectural

WEST TN READY MIX

380 Pierce Rd.
Oakland, TN 38060
Primary Contact: Herron Odle
Phone: (901) 466-3030
rhodle@southernconcrete.com
Products/Services: Ready Mix Concrete Services

ADMIXTURES

ACTIVE MINERALS INTERNATIONAL, LLC

34 Loveton Circle Suite 100
Sparks, MD 21152
Primary Contact: Joey Bell
Phone: (571) 377-9158
j.bell@activeminerals.com
www.acti-gel.com
Products/Services: Worldwide leader in kaolin and attapulgite production. Our product, Acti-Gel 208, allows concrete producers to replace natural sand with manufactured sand while maintaining pumpability, workability, and finishability.

CARBONCURE TECHNOLOGIES, INC.

1148 Stratborough Ln
Fort Collins, CO 80525
Primary Contact: Ted Jones
Phone: (303) 905-6946
tjones@carboncure.com
www.carboncure.com
Products/Services: CarbonCure manufactures a technology that introduces carbon dioxide(CO2) into concrete during mixing, enabling concrete producers to create high performing, more sustainable concrete with a reduced carbon footprint.
Additional Information: Shannon Seipel Tec Serv Mgr (816) 598-6899 sseipel@carboncure.com
Rhett Dunlap Tech Service Eng. (865) 300-9596 rdunlap@carboncure.com

CHRYSO, INC.

3958 Ruger Drive
Royse City, TX 75189
Primary Contact: Drew Carmichael
Phone: (615) 631-5323
drew.carmichael@chrysoinc.com
www.chrysoinc.com
Products/Services: Full line Admix & Fiber for the Concrete & Precast Industry.
Additional Information: drew.carmichael@chrysoinc.com

DON CONSTRUCTION PRODUCTS, INC.

2826 Lineberger Industrial Dr.
Lancaster, SC 29720

Primary Contact: Ramez Maayah
Phone: (704) 891-8702
ramez.maayah@dcp-int.com
www.dcpusa.com
Products/Services: A UK based company with over 90 years of experience in developing, manufacturing & marketing innovative concrete admixtures.
Additional Information: Alan Jolley (470)660-1904 Sales Rep.

EDENCRETE

8041 Rocky Hollow Cove
Germantown, TN 38138
Primary Contact: Brent Sanders
Phone: (470) 316-8114
bsanders@edeninnovations.com
www.edencrete.com
Products/Services: ASTM TYPE S Carbon Nanotube Enriched Admixture
Additional Information: Brent Sanders Senior Sales Specialist (470)316-8114

EUCLID CHEMICAL COMPANY

19215 Redwood Road
Cleveland, OH 44110
Primary Contact: Adam Heckler
Phone: (216) 531-9222
aheckler@euclidchemical.com
www.euclidchemical.com
Products/Services: Concrete Admixtures, Tuf-Strand Fibers, Integral Colors, Sealers & Construction Products
Additional Information: Ron Shirley(901) 355-8306
Kirby Fiveash (404)307-2411
Ron Foster (239) 633-0437

GCP APPLIED TECHNOLOGIES

2325 Lakeview Pkwy
Alpharetta, GA 30009
Primary Contact: Jeff Slaughter
Phone: (341) 303-4880
jeff.slaughter@gcpat.com
www.gcpat.com
Products/Services: We are inspired to influence how the world is built. We are dedicated to the development of high performance products, the continued pursuit of advancement in construction technologies, simplifying the complexities of construction

worldwide, and delivering value to our customers.
Additional Information: Zack Swanson - Technical Sales (410) 794-6973 zack.swanson@gcpat.com
Jeff Slaughter St. Louis, MO (314)303-4880
Dan Meine - Director of Sales daniel.j.meine@gcpat.com

MASTER BUILDERS

23700 Chagrin Blvd
Cleveland, OH 44122
Primary Contact: Jason Ford
Phone: (423) 609-0235
jason.ford@mbcc-group.com
www.mbcc-group.com
Products/Services: MasterPozzolith Series, MasterPolyheed Series, MasterGlenium Series, MasterSet Series, MasterFibers, Master X-Seed Series, MasterLife 300C & 300D
Waterproofing, Green Sense Concrete, SRA/CRA, MB Slab
Additional Information: Denny Lind (615) 390-4899
Drag Yarbrow (901) 484-9190
Nicholas Shortridge (931) 247-6189
Jaclyn Streeter (865) 454-2301

SIKA CORP

1930 Sarasota Business Pkwy
NE
Conyers, GA 30013
Primary Contact: Jason Zelinski
Phone: (864)909-0869
zelinski.jason@us.sika.com
www.sikausa.com
Products/Services: Concrete Admixtures, Color, Fibers & Waterproofing Admixtures
Additional Information: Bryan Strelvel Sr. Sales Rep.(615)828-7332
strelvel.bryan@us.sika.com
Andy Smith(336) 689-1105
smith.andy@us.sika.com, Paul Ramsburg (864) 344-4109
ramsburg.paul@us.sika.com



2021 TCA Membership Directory

Associate Members

AGGREGATES

E. DILLON & CO.

2522 Swords Creek Rd
Swords Creek, VA 24649
Primary Contact: Mike Miller
Phone: (276) 971-4630
mmiller@edillon.com
www.edillon.com

Products/Services: E.Dillon is a long-time, top provider of aggregates, finely ground & sand size dolomite products throughout the SE, NE & Middle US. We produce high-chemistry dolomites for plate glass manufacturing, fiberglass, brick coatings & specialty fillers in concrete. Produce EverLoc® a Segmental Retaining Wall System.

Additional Information: Steve St.Clair (276)701-0015, Donny Dye (276)971-0965

PINE BLUFF MATERIALS CO.

1030 Visco Drive
Nashville, TN 37210
Primary Contact: Mike Bohleber
Phone: (615) 254-1956
mike.bohleber@pbmat.com
www.pbmat.com

Products/Services: Specification Sand, Gravel & Stone
Additional Information: Specification Sand, Gravel & Stone

ROGERS GROUP INC.

421 Great Circle Rd
Nashville, TN 37202
Primary Contact: Granville Grant
Phone: (615) 613-1115
granville.grant@rogersgroupinc.com
www.rogersgroupinc.com

Products/Services: Crushes Stone and Natural Sand, & Construction Services

VULCAN MATERIALS CO.

115 East Park Dr. Suite 100
Brentwood, TN 37027
Primary Contact: Jon Badgett
Phone: (615) 361-8551
badgettj@vmcmail.com
www.vulcanmaterials.com
Products/Services: Crushed Stone & Sand

Additional Information:
Rebekah Bomar - bomarr@vmcmail.com

CEMENT

CEMEX

PO Box 100813
Birmingham, AL 35210
Primary Contact: Scott Showerman
Phone: (336) 512-3552
cody.eaton@cemex.com
www.cemexusa.com
Products/Services: Portland Cement
Additional Information: Stevend George -Sales Mgr. Knoxville Plant (205) 777-2858 stevend.george@cemex.com
Cody Eaton -Sales Mgr. Nashville Terminal (615) 478-7594
cody.eaton@cemex.com

CONTINENTAL CEMENT CO.

16401 Swingley Ridge Rd
Chesterfield, MO 63017
Primary Contact: Stewart Parker
Phone: (636) 532-7440
stewart.parker@continentalcement.com
www.continentalcement.com
Products/Services: Cement Manufacturer
Additional Information: David Loomes, VP Sales & Supply Chain (800)625-1133 2549 Channel Ave. Memphis, TN 38106

HOLCIM US

4037 Rural Plains Circle
Suite 225
Franklin, TN 37064
Primary Contact: Benoit Cotnoir
Phone: (615) 771-1220
benoit.cotnoir@lafargeholcim.com
www.lafargeholcim.com
Products/Services: Portland Cement, Slag, Masonry & Oilwell Cement
Additional Information: Joey Deroe (870) 215-3420 Heath Rogers (901) 833-3647

LEHIGH CEMENT CO.

400 Riverhills Business Park
Suite 437
Birmingham, AL 35242
Primary Contact: Phil Detwiler
Phone: (205) 968-5803
phil.detwiler@lehighhanson.com
www.lehighhanson.com
Products/Services: Cement sales
Additional Information: Tray Breitbarth (770)605-0854
Middle & East TN, Grady Gunn (205) 901-6105 West TN

NATIONAL CEMENT CO. OF ALABAMA

2000 Southbridge Pkwy Suite 600
Birmingham, AL 35209
Primary Contact: Stephen Snipes
Phone: (205) 423-2600
ssnipes@natcem.com
www.nationalcement.com
Products/Services: Portland Cement Type I, Ib, III, Portland & Masonry Cement Bags
Additional Information: Scott East Territory Mgr (404) 647-9643 seast@natcem.com

FIBERS

DURAFIBER, INC.

714 West Main St. Suite 205
Murfreesboro, TN 37129
Primary Contact: Mike Deaton
Phone: (615) 333-9883
durafiber@aol.com
www.durafiber.com
Products/Services: Furnish Concrete Fiber Reinforcement, which includes Ultrafiber 500, Polypropylene Fiber, Steel Fiber, & Fritz Pak Products

FLYASH

BORAL RESOURCES

10701 S. River Front Pkwy
Suite 300
South Jordan, UT 84095
Primary Contact: Clark Gates
Phone: (615) 308-0219
clark.gates@boral.com
www.flyash.com

Products/Services: Fly Ash Sales, Fly Ash Disposal, Bottom Ash Sales, Bottom Ash Disposal.
Additional Information: Darrell Wilson (336) 210-7435 TSR
Greg Thomas (501)844-6607 TSR

CHARAH SOLUTIONS, INC.

12601 Plantside Dr.
Louisville, KY 40299
Primary Contact: Sara Keating
Phone: (502) 245-1353
skeating@charah.com
www.charah.com
Products/Services: Charah is a leading provider of Class C&F fly ash to Ready Mix Producers throughout the country via its MultiSource network.
Additional Information: Randy Compton-VP Sales (865) 414-1518
Christian Lentz-Sales Mgr (502) 552-6538

THE SEFA GROUP

217 Cedar Rd.
Lexington, SC 29073
Primary Contact: Bert Nunn
Phone: (803) 622-9290
bnunn@sefagroup.com
www.sefagroup.com
Products/Services: Fly Ash Sales, Technical Service, Transportation Service, Pig Rentals, Fly Ash Sources in TN, NC, & SC.
Additional Information: Mark Casey Technical Sales & Service (865)806-6950mcasey@sefagroup.com Bert Nunn Vice President Sales (803) 622-9290 bnunn@sefagroup.com

ARCHITECTS

HEDSTROM DESIGN LANDSCAPE ARCHITECTURE

110 W. Magnolia Ave.
Knoxville, TN 37917
Primary Contact: Sara Pinnell
Phone: (865) 329-0012
sara@hedstromdesign.com
Products/Services: Landscape Architecture Services

BATCH PLANTS & EQUIPMENT

COMMAND ALKON

1800 International Park Dr. Ste 400
Birmingham, AL 35243
Primary Contact: Lori Allen
Phone: (800) 624-1872
lallen@commandalkon.com
www.commandalkon.com
Products/Services: Batching Controls, Dispatching and Accounting Software, Production/Quality Control Software and Performance Management Software

SOUTHERN CONCRETE MACHINERY, LLC

PO Box 11098
Murfreesboro, TN 37129
Primary Contact: Chris Davenport
Phone: (615) 957-4600
chris@southernconcrete machinery.com
www.southernconcrete machinery.com
Products/Services: Con-E-Co Batch Plants, Pearson Hot Water & Chiller Systems, Ph Systems, BFK Reclaimers & Plant Parts for All Plant Manufacturers.

STEPHENS MFG CO. INC.

PO Box 488
Tompkinsville, KY 42167
Primary Contact: Greg High
Phone: (270) 487-6774
ghigh@stephensmfg.com
www.stephensmfg.com
Products/Services: Concrete Plants, Dust Collectors, Reclaimers, Material Handling Systems, & Mixers

SYSTEMS & CONTROLS

1850 Old Hwy 95
Lenoir City, TN 37771
Primary Contact: Mark McHenry
Phone: (865) 988-8583
mmchenry@syscontn.com
www.systemsandcontrols.com
Products/Services: Stephens Concrete Plants & Parts, Batch Computers & Dispatch Systems, Badger Water Meters, Hydronix Moisture Probes, Plant Scale Certifications & Service

CONCRETE PUMPING

CONCRETE PUMP PARTNERS

3950 Dickerson Pike
Nashville, TN 37207
Primary Contact: Jon Kemp
Phone: (615) 299-9899
melissagay@pumppartners.com
www.pumppartners.com
Products/Services: Concrete Pumping Services

REYNOLDS CONCRETE PUMPING

720 Beech St.
Bowling Green, KY 42101
Primary Contact: Johnny Phillips
Phone: (615) 213-2600
jphillips@reynoldscorporation.com
www.reynoldscorporation.com
Products/Services: Concrete Pumping Services: Boom Pumps, Line Pumps, Placing Booms, Rock Slingers

CONSTRUCTION EQUIPMENT

MULTIVIBE, INC.

3125 N. Friendship Rd.
Paducah, KY 42001
Primary Contact: Carl Ellis
Phone: (270) 554-2615
carle@multivibe.com
www.multivibe.com
Products/Services: Vibratory Screeds (Gas & Electric), Wall Vibrators, Roller Screeds

POWER RENTAL & SALES

3653A Trousdale Dr.
Nashville, TN 37204
Primary Contact: Brent Cornelius
Phone: (615) 837-1450
bc.powerrental@yahoo.com
Products/Services: Vertical forms, Masonry Supplies, Power Tools & Grinders

INSULATED CONCRETE FORMS

A.G. HEINS CO. INC.

116 Heins St.
Knoxville, TN 37921
Primary Contact: A. Gordon Heins III
Phone: (865) 525-5363
gordonh@agheins.com
www.agheins.com
Products/Services: Concrete & Masonry Accessories, Insulated Concrete Forms, Waterproofing & Sealants.

FORM-A-DRAIN

2801 Post Oak Blvd Ste 600
Houston, TX 77056
Primary Contact: Johnny Zamora
Phone: (713) 293-2504
jzamora@westlake.com
www.formadrainsolutions.com
Products & Services: Form-A-Drain installed before basement construction begins as the foundation footing forms. Form-A-Drain stays in place permanently & forms a complete sub-slab perimeter loop around foundation. No need to strip, clean & transport forms to next job site.
Products: Form-A-Drain Plus, Platon Waterproofing Membrane, Certa-Form UltraFlex Forms for curves or straightways.

NUDURA/TREMCO CPG

596 Summit Point
Canton, GA 30114
Primary Contact: John Ritch
Phone: (866) 468-6299
jritch@tremcoinc.com
www.nudura.com
Products/Services: NUDURA is a leading innovator of permanent concrete forming systems & accessories

PARKS ICF, LLC

PO Box 10081
Knoxville, TN 37939
Primary Contact: Charles Parks
Phone: (865) 688-2366
charles@parksicf.com
www.parksicf.com
Products/Services: Insulated Concrete Forms

MATERIAL SUPPLIERS

CLEMONS CONCRETE COATINGS

505 Cave Rd.
Nashville, TN 37210
Primary Contact: Rich Sanders
Phone: (615) 872-9099
info@ccc-usa.com
www.ccc-usa.com
Products/Services: Sealers, Retarders, Curing Compounds, Stains, and Form Release

PERK PRODUCTS & CHEMICAL CO., INC.

PO Box 100585
Nashville, TN 37224
Primary Contact: Scott Perkerson
Phone: (615) 242-6157
scott@perk-products.com
www.perk-products.com
Products/Services: Manufacturer of Concrete Coatings to Include Sealers, Water-Proofers, Stains, Releases, and Surface Retarders. Distributor of Bagged & Liquid Calcium Chloride.

SCOTWOOD INDUSTRIES

12980 Metcalf Ave. Ste. 240
Overland Park, KS 66213
Primary Contact: Doug Pratt
Phone: (314) 566-4153
dpratt@scotwoodindustries.com
www.scotwoodindustries.com
Products/Services: Full Service Distributor of Magnesium Chloride & Calcium Chloride for Ice Control, Anti-Icing, Dust Control, & Road Stabilization.

SICALCO, LTD.

522 Chestnut St. Suite GB
Hinsdale, IL 60521
Primary Contact: Kevin Casto
Phone: (312) 404-9207
keasto@sicalco.net
www.sicalco.net
Products/Services: Marketers of Liquidow(tm) Calcium Chloride

SOLOMON COLORS INC.

4050 Color Plant Rd
Springfield, IL 62702
Primary Contact: Matt Park
Phone: (615) 686-0880
mpark@solomoncolors.com
www.solomoncolors.com

2021 TCA Membership Directory

Affiliates (cont.)

Products/Services: Colors for Concrete: Liquid, Dry, & Granular, Decorative Concrete: Stains, Stamps, Sealers, Resurfacing Overlays, Densifiers, Surface Retarders & Ultra-fiber

PRECAST

BARGER & SONS, INC.

123 Pawnook Farm Rd.
Lenoir City, TN 37771
Primary Contact: M. Eric Barger
Phone: (865) 270-8080
eric@bargerandsons.com
www.bargerandsons.com
Products/Services: Retaining Wall Blocks, Manholes, Structures, Box Culverts, TDOT Certified & NPCA Certified Plant

BRADLEY TANK & PIPE, LLC

PO Box 3146
Cleveland, TN 37328
Primary Contact: Eddie Johnson
Phone: (423) 479-4482
edjohnson@bradleytankandpipe.com
Products/Services: Redi-Rock Retaining Walls, Sanitary/Storm-Manholes, Utility Structures, Grease Interceptors & Water Quality Structures

FOLEY PRODUCTS CO.

PO Box 2447
Columbus, GA 31902
Phone: (706) 563-7882
dtyson@theconcretete.com
www.foleyproducts.com
Products/Services: Precast Box & Round Structures, Drainage Products, Specialty Items

GATE PRECAST CO.

1 Bluegrass Drive
Ashland City, TN 37015
Primary Contact: James Pearson
Phone: (615) 792-4871
jpearson@gateprecast.com
www.gateprecast.com
Products/Services: Precast Concrete Systems, Wall Panel, Column Covers & Spandrels

HOLTEN CONCRETE PRODUCTS, LLC

6726 Manchester Hwy
Murfreesboro, TN 37127
Primary Contact: William Cole
Phone: (615) 893-9216
jrmcole@aol.com
Products/Services: Precast Concrete & Pipe

JARRETT CONCRETE PRODUCTS INC.

2012 Hwy 12 S
Ashland City, TN 37015
Primary Contact: Travis Jarrett
Phone: (615) 417-6311
frank.bowen@jarrettconcreteproducts.com
www.jarrettconcreteproducts.com
Products/Services: Precast Concrete Structures

MID-SOUTH PRESTRESS

2949 Joe Dowlen Rd
Pleasant View, TN 37146
Primary Contact: Nick Thompson
Phone: (615) 746-6606
nthompson@msprestress.com
Products/Services: Structural Precast/Prestressed Concrete Manufacturer & Erector. Hollowcore Precast Columns, Precast/Prestressed Beams & Solid Slabs.

TRUCKS & EQUIPMENT

CON-TECH MFG., INC.

67079 170th Ave.
Dodge Center, MN 55927
Primary Contact: Dean Bungum
Phone: (507) 206-8998
deanb@ctmmixers.com
www.ctmmixers.com
Products/Services: Manufacturing Concrete Truck Mixers Sales & Parts

KALES TRUCK & HEAVY EQUIPMENT

375 Red River Rd
Gallatin, TN 37066
Primary Contact: Cliff Toliver
Phone: (706) 987-0214
ctoliver@kalestruckheavyequipment.com
www.kalestruckheavyequipment.com

Products/Services: National full-service on-site repair professional specializes in consulting, managing & staffing shops as well as providing a fixed budget repair solution proven to increase truck availability while working off of a fixed R&M Budget.

KNOX CONCRETE CONSULTANTS, LLC

915 Doyle Rd Ste 303
Deltona, FL 32725
Primary Contact: Keith Knox
Phone: (813) 546-6323
keith@silopros.com
www.knoxconcreteusa.com
Products/Services: We Service the Concrete Industry Cleaning Out Trucks, Silos, Filer Bags, etc.

MCNEILUS TRUCK

PO Box 367
Villa Rica, GA 30180
Primary Contact: Brad Towler
Phone: (770) 459-5151
btowler@mcneilusco.com
www.mcneiluscompanies.com
Products/Services: Distributor for Trucks and Mixers, Designed for Production & Safety

TEREX ADVANCE MIXER

7727 Freedom Way
Fort Wayne, IN 46898
Primary Contact: Chelsey Kutz
Phone: (330) 204-1079
chelsey.kutz@terex.com
www.terex.com/concrete
Products/Services: Front Discharge Ready Mix Trucks, Complete Parts, Accessories & Field Service Network

Contractor Members

ADVANTAGE CONST. SERVICES

1208 Hwy 47 E
Dickson, TN 37055
Primary Contact: Trent Smith
Phone: (615) 740-8777
trentacs@comcast.net
www.advantageconst.com
Products/Services: Segmental Retaining Walls- Design Performed In House

BAKER'S CONSTRUCTION SERVICES, INC.

PO Box 417
Piney Flats, TN 37686
Primary Contact: Kevin Buck
Phone: (423) 538-4400
kb@bakersconstructionservices.com
www.contactbcs.com
Products/Services: Site Construction, Utilities, Site Concrete, Curb & Gutter, Site Construction Oversight

BALTZ & SONS CONCRETE

10505 US Hwy 64 Ste 1
Arlington, TN 38002
Primary Contact: Kevin Baltz
Phone: (901) 465-4337
kevin@baltzconcrete.com
www.baltzconcrete.com
Products/Services: Decorative Residential & Commercial Concrete & Pervious Concrete

BELL & ASSOCIATES

PO Box 363
Brentwood, TN 37024
Primary Contact: Darek Bell
Phone: (615) 373-4343
egoodwin@balp.com
www.balp.com
Products/Services: Tilt-up, General Contracting, Bridges, Parking Garages

BHS CONCRETE LLC

860 Vaughn Rd
Memphis, TN 38122
Primary Contact: Joe Brannon
Phone: (901) 603-9997
joe@bhsconcrete.com
www.bhsconcrete.com
Products/Services: Residential & Commercial, Form & Place Concrete Foundations, Slabs, Flatwork, Walls, Patios & Driveways

BLACK CONSTRUCTION, LLC.

P.O. Box 4051
Cleveland, TN 3732
Primary Contact: Sherrill Black
Phone: (423) 476-7278
sadmb@aol.com
www.commercialconcretetn.net
Products/Services: Industrial & Commercial Concrete, Excavate, Flatwork, TDOT Work & Walls

BLOUNT CONTRACTORS, INC.

635 Dameron Ave.
Knoxville, TN 37921
Primary Contact: William Hall
Phone: (865) 981-9090
wchall@blountcontractors.com
www.blountcontractors.com
Products/Services: Full Service Concrete Contractor
wchall@blountcontractors.com

BURWIL CONSTRUCTION CO.

PO Box 637
Bristol, TN 37621
Primary Contact: Nick Self
Phone: (423) 968-4158
nself@burwil.com
www.burwil.com
Products/Services: Concrete Services

C.J. MAHAN CONST. CO LLC

250 Hartford Ave.
Columbus, OH 43222
Primary Contact: Jeff North
Phone: (614) 875-8200
jnorth@cjmahan.com
www.cjmahan.com
Products/Services: Heavy civil and marine contractor specializing in major bridge structures along with experience with dams, piers, docks, loading facilities, deep heavy capacity foundations, drilled shafts, micro-piles and more.

CARTER CONCRETE STRUCTURES, INC.

1960 C. Parker Court
Stone Mountain, GA 30087
Primary Contact: Eric Ristic
Phone: (770) 978-1212
jamie@carterstructures.com
www.carterstructures.com
Products/Services: Cast-In-Place Concrete Contractor

CHARLES GOAR CONCRETE

1673 Newport Place
LaVergne, TN 37086
Primary Contact: Charles Goar
Phone: (615) 459-9003
allengoar@gmail.com
Products/Services: Form carpentry, Pour in Place, Commercial & TDOT Roadwork

CHARTER CONSTRUCTION INC.

PO Box 90970
Nashville, TN 37209
Primary Contact: Turner Talley
Phone: (615) 383-8464
richardw@charterconstruction.com
www.charterconstruction.com
Products/Services: Concrete Subcontractor, Tilt-Up & Commercial

CHAVERS CONSTRUCTION, INC.

801 Virecent Rd
Cantonment, FL 32533
Primary Contact: Ryan Chavers
Phone: (850) 474-1966
ryan@chaversinc.com
www.chaversinc.com
Products/Services: Concrete, Asphalt, Road Construction, Underground Utilities, Site Work

CONCRETE CRAFT OF NORTH NASHVILLE

113 Shivel Dr.
Hendersonville, TN 37075
Primary Contact: Jason Nordwall
Phone: (425) 903-6544
jason.nordwall@concretecraft.com
www.concretecraft.com/north-nashville-tn
Products/Services: Concrete Installation, Decorative Concrete Overlays, Restoration, Commercial & Residential, Concrete Grinding

DEMPSTER POURED FOUNDATIONS

PO Box 11331
Knoxville, TN 37939
Primary Contact: Ross Dempster
Phone: (865) 755-0869
ross@dpfconcrete.com
www.dempsterpouredfoundations.com

Products/Services: Poured In Place Walls, Follow Us On Instagram Dempster Poured Foundations LLC

DENHAM-BLYTHE CO., INC.

3030 Business Park Cir Ste 200
Goodlettsville, TN 37027
Primary Contact: Vance Hohn
Phone: (615) 855-2244
dbull@denhamblythe.com
www.denhamblythe.com
Products/Services: Industrial Design-Build Construction & Engineering

DENNIS CONCRETE SERVICE, INC.

662 B Sango Rd.
Clarksville, TN 37043
Primary Contact: Josh Dennis
Phone: (931) 801-2565
dennisconcrete@yahoo.com
Products/Services: Concrete Construction Services & Pervious Concrete

DUSTY & SONS CONCRETE, LLC

2478 Greens Mill Rd.
Columbia, TN 38401
Primary Contact: Josh Cornwall
Phone: (615) 473-0123
joshcornwall@yahoo.com
www.dustyandsonsconcrete.com
Products/Services: Concrete Walls, Stamping & Staining Decorative Concrete, Driveways, Slabs, Flatwork & Pervious

GLENN E. MITCHELL & CO., INC.

3583 Louisville Road
Louisville, TN 37777
Primary Contact: Andy Mitchell
Phone: (865) 588-5135
debbie@gemitchellco.com
www.gemconcrete.com
Products/Services: Foundations, Formed Walls, Fine Grading, Laser-Screeding, Place & Finish Slabs, Structural Concrete, Pervious & Tilt Walls

H&C CONCRETE CONSTRUCTION GROUP

917 8th Ave. S. Ste E
Nashville, TN 37203
Primary Contact: Jon Harris
Phone: (615) 647-7513
jharris@hconcreteconstructiongroup.com

www.hconcreteconstructiongroup.com
Products/Services: Turnkey Concrete Contractor

HAWKINS ASPHALT PAVING, LLC

PO Box 292
Wartrace, TN 37183
Primary Contact: Chris Hawkins
Phone: (931) 389-9671
chrishawkins6852@gmail.com
www.hawkinspaving.com
Products/Services: Paving of City Streets, Curbing, Excavation, Driveways & Pervious Concrete

HI-WAY PAVING INC.

4343 Weaver Court N.
Hilliard, OH 43026
Primary Contact: Ed Wessel
Phone: (614) 876-1700
edwessel@hiwaypaving.com
www.hiwaypaving.com
Products/Services: Large scale concrete paving company operating in the southeast and midwestern states. Specializing in airfield and interstate slipform paving.

HR CONCRETE SOLUTIONS, LLC

722 Powdermill Rd Ste A
Gatlinburg, TN 37738
Primary Contact: James Reeves
Phone: (865) 335-2346
James@HR-Concrete.com
www.hrconcreteco.com
Products/Services: CIP Concrete, Decorative Concrete, Footings & Foundations, Flatwork, All Concrete Applications & Concrete Walls

JAY-TON CONSTRUCTION CO.

7000 Hwy 59 W.
Burlison, TN 38015
Primary Contact: Chase Sellers
Phone: (901) 476-1487
csellers@jay-ton.com
www.jay-ton.com
Products/Services: Commercial Concrete Placement for Manufacturing, Energy Facilities, Distribution Centers & Warehouses

2021 TCA Membership Directory

Contractor Members

JINKS CONCRETE CONTRACTORS INC.

184 Roy Rd
Sweetwater, TN 37874
Primary Contact: JoAnna Jinks
Phone: (423) 337-0073
jinks@jinksconcrete.com
www.jinksconcrete.com
Products/Services: ACI Certified Concrete Finishers & Adhesive Anchor, Certified NRMCA Pervious Concrete, Decorative Concrete, Curbs, Retaining Walls

JONES BROS. CONTRACTORS, LLC

1010 Pleasant Grove Place
Mt. Juliet, TN 37122
Primary Contact: Kevin Hinson
Phone: (615) 754-4710
jbritton@jonesbroscont.com
www.jonesbrosinc.com
Products/Services: Road and Bridge Construction

KCS CONSTRUCTION, LLC

PO Box 1939
Columbia, TN 38402
Primary Contact: Wade Kincaid
Phone: (931) 490-9782
wade@kcsllc.com
www.kcsllc.com
Products/Services: Residential & Commercial Concrete, Concrete Subcontractor For All Size Home Builders, Pervious Certified

LITHKO CONTRACTING INC.

359 Mason Rd.
LaVergne, TN 37086
Primary Contact: Chris Dittman
Phone: (615) 834-8773
dittman@lithko.com
www.lithko.com
Products/Services: Total Package Concrete Contractor

LU, INC.

PO Box 607
Kingston Springs, TN 37082
Primary Contact: Warren Cook
Phone: (615) 952-5501
warren.cook@guiderail.com
www.guiderail.com

Products/Services: LU is a safety & specialty highway contractor operating across the southeast. We perform fencing, guiderail, signage, attenuator install & repairs.

MARCOR CONSTRUCTION, INC.

922 Harpeth Valley Place
Nashville, TN 37221
Primary Contact: Kyle Bowers
Phone: (615) 673-9950
kyle@marcorconstruction.com
www.marcorconstruction.com
Products/Services: Concrete Curb & Gutters, Sidewalks, Pervious Concrete, & Misc Concrete Work

NICKELL COMPANY, LLC

407 Cemetery Ave.
Columbia, TN 38401
Primary Contact: Steve Wiley
Phone: (931) 388-3644
steve@dnickell.com
www.dnickell.com

Products/Services: Concrete Installers of Driveways, Sidewalks, Curb & Gutter, Foundations, Floor Slabs & Walls.

NSITE, INC.

PO Box 150
Milan, TN 38358
Primary Contact: Bill Smith
Phone: (731) 695-5663
bill@nsite-inc.com
Products/Services: General Contractor Specializing in Downtown Improvement Projects, Certified Pervious Installer

RJ WATKINS AND SON CONSTRUCTION, INC.

1706 Industrial Loop Rd
Pulaski, TN 38478
Primary Contact: Charles Watkins
Phone: (931) 309-2039
charleswatkinsandcompany@gmail.com
Products/Services: Bridge Builders, Retaining Walls, Box Culverts, Span Bridges, Pipe in Walls, ACI Certified Flatwork

ROY T. GOODWIN CONTRACTORS, INC.

2620 Locust St.
Nashville, TN 37207
Primary Contact: Brannon Goodwin
Phone: (615) 242-5448
brad@rtgcontractors.com
Products/Services: Specializing in Concrete Sidewalks, Curbs, Driveways, Ramps, Street Scapes & Concrete Infrastructure

SHIMMICK CONSTRUCTION

5535 Trailhead Dr.
Chattanooga, TN 37415
Primary Contact: Kevin Sagez
Phone: (423) 498-5490
kevin.sagez@shimmick.com
www.shimmick.com
Products/Services: Prime (General) Contractor

SMC COMMERCIAL LLC

804 E Gov. John Sevier Hwy
Knoxville, TN 37920
Primary Contact: Jason Dunaway
Phone: (865) 851-9236
jason@smcknox.net
Products/Services: Commercial Concrete Installation

SOUTHERN CONSTRUCTORS, INC

PO Box 9476
Knoxville, TN 37940
Primary Contact: Richard Huskey
Phone: (865) 579-5351
pturner@southernconstructorsinc.com
www.southernconstructorsinc.com
Products/Services: General Contractor Specializing in Infrastructure- Water & Wastewater Plants, Pump Stations, Bridge Repairs, Commercial & Industrial Bldgs

WALLAND SERVICES, LLC

PO Box 295
Rockvale, TN 37153
Primary Contact: Tony Sutherland
Phone: (615) 772-8212
wallandservices@gmail.com

Products/Services: Construction Company Specializing In Water & Sewer Utilities & Concrete

WILSON CONSTRUCTION GROUP, LLC

PO Box 785
Athens, TN 37371
Primary Contact: Keith Wilson
Phone: (423) 745-0600
info@wilsonbuilds.com
www.wilsonbuilds.com
Products/Services: New Building Construction, Bridge Rehabilitation, Hanger Construction, Streetscape Construction, Construction of Building Additions

WRIGHT BROTHERS CONST.CO. INC.

1500 Lauderdale Memorial Hwy
Charleston, TN 37310
Primary Contact: Chris Calandrino
Phone: (423) 336-2261
ccalandrino@wbcci.com
www.wbcci.com
Products/Services: Bridges, Culverts, Retaining Walls, Concrete Structural Items

ATC GROUP SERVICES

2690 Memorial Blvd. SteD
Murfreesboro, TN 37129
Primary Contact: Tim Thomson
Phone: (615) 546-6946
tim.thomson@atcgs.com
www.atcgroupservices.com
Products/Services: Concrete Acceptance Testing/QA, QC, Soil Mechanics, Geotechnical Investigation, Full Lab for Construction Materials Testing

ATC GROUP SERVICES

3144 Stage Post Dr.
Bartlett, TN 38133
Primary Contact: Dave Schmidt
Phone: (901) 259-2362
dave.schmidt@atcgs.com
www.atcgroupservices.com
Products/Services: Geotechnical & Construction Material Testing Services, Monitor Concrete Testing, Fill Placement, Density Testing & Steel Inspection

BARGE DESIGN SOLUTIONS

615 3rd Ave. South Ste 700
Nashville, TN 37210
Primary Contact: Raymond Canady
Phone: (615) 254-1500
raymond.canady@bargedesign.com
www.bargedesign.com
Products/Services: Architectural & Engineering Services Surveying & Construction Inspection

BFW ENGINEERING & TESTING, INC.

PO Box 120
Paducah, KY 42002
Phone: (270) 443-1995
www.bfwengineers.com
Products/Services: Construction Materials Testing, Inspections, Civil, Structural, Transportation & Surveying

BUILDING & EARTH SCIENCES, INC.

5545 Derby Dr.
Birmingham, AL 35210
Primary Contact: Mark Nolen
Phone: (615) 403-8458
mnolen@buildingandearth.com
www.buildingandearth.com
Products/Services: Geotechnical Engineering Services, CMT & Special Inspections

C&T ENGINEERING & INSPECTION, LLC

1113 Murfreesboro Rd. Ste 106
Franklin, TN 37064
Phone: (615) 567-3306
Primary Contact: Tom Lamb
tom.lamb@ct-eng.net
Products/Services: Construction Management Services, Environmental Consulting, and Labor Compliance Management for Public and Private Sector

COLLIER ENGINEERING

2949 Nolensville Pike
Nashville, TN 37211
Primary Contact: James Beaudoin
Phone: (615) 331-1441
jim.beaudoin@collierengineering.com
www.collierengineering.com
Products/Services: Consulting Engineering, Geotechnical Engineering & Materials Inspection

CONSTRUCTION MAT.LAB/DBA, INC.

PO Box 9449
Knoxville, TN 37920
Primary Contact: Scott Fitzgerald
Phone: (865) 573-6122
sftzgerald@cmlabtechs.com
www.cmlabtechs.com
Products/Services: Geotechnical Drilling & Rock Coring, Construction Materials Testing, Concrete Testing, QA/QC Fill Placement & Density Testing, AMRL Accredited

EARTH SCIENCE ENGINEERING, LLC

201 W. Dunbar Cave Rd
Clarksville, TN 37040
Primary Contact: Chris Casteel
Phone: (931) 645-8008
chris@eseng.us
www.eseng.us
Products/Services: Engineering Services

ECS SOUTHEAST, LLP

318 Seaboard Lane Ste 208
Franklin, TN 37067
Primary Contact: Mark Luskin
Phone: (615) 885-4983
tpeak@ecslimited.com
www.ecslimited.com

Products/Services: Engineering Consulting and Testing for Construction Materials, Geotechnical & Environmental, Concrete Coring

ENGINEERING & TESTING SOLUTIONS

PO Box 6212
Sevierville, TN 37864
Primary Contact: Michael Whaley
Phone: (865) 428-4468
awhaley@ets-tn.com
www.ets-tn.com
Products/Services: Geotechnical & Construction Materials Testing, Retaining Wall Design, Laboratory Testing & Drilling

GEOSERVICES, LLC

2561 Willow Point Way
Knoxville, TN 37931
Primary Contact: Josh Eslinger
Phone: (865) 539-8242
jeslinger@geoservicesllc.com
www.geoservicesllc.com
Products/Services: Geotechnical, Construction Materials, Natural Resources Engineering

GEOTECHNOLOGY INC.

3312 Winbrook Dr
Memphis, TN 38116
Primary Contact: Justin Donovan
Phone: (901) 353-1981
jdonovan@geotechnology.com
www.geotechnology.com
Products/Services: Engineering Services, Construction Materials Testing & Special Inspections

GOODWYN, MILLS & CAWOOD, INC.

3310 West End Ave Ste 420
Nashville, TN 37203
Primary Contact: Phil Collins
Phone: (615) 333-7200
phil.collins@gmcnetwork.com
www.gmcnetwork.com
Products/Services: Geotechnical, Construction Materials Testing, Architecture, Engineering, Environmental, Transportation

INTERTEK-PSI INC.

751 South 5th St.
Nashville, TN 37206
Primary Contact: Ted Kisselovich

Phone: (615) 244-8990
tony.thomas@intertek.com
www.intertek.com
Products/Services: ASHHTO Certified Laboratory, ARML (ASTM E329), ACI, ASNT, CWI

K.S. WARE & ASSOCIATES LLC

52 Lindsley Ave Ste 101
Nashville, TN 37210
Primary Contact: Julie Oliphant
Phone: (615) 255-9702
jpohareyk@kswarellc.com
www.kswarellc.com
Products/Services: Concrete, Asphalt, and Aggregate Testing

OHM ADVISORS

209 10th Ave. S Ste 154
Nashville, TN 37203
Primary Contact: Chris Lamus
Phone: (615) 649-5264
chris.lamus@ohm-advisors.com
www.ohm-advisors.com
Products/Services: Architecture, Engineering, Planning & Urban Design, Landscape Architecture & Surveying

PATRIOT ENG. & ENVIRONMENTAL

6150 E. 75th St.
Indianapolis, IN 46250
Primary Contact: Jeff Young
Phone: (317) 576-8058
mdockery@patrioteng.com
Products/Services: Materials Testing Services, Environmental Engineering, Geotechnical Engineering

RAGAN-SMITH ASSOCIATES, INC.

PO Box 60070
Nashville, TN 37206
Primary Contact: Kenny Freer
Phone: (615) 244-8591
kfreer@ragansmith.com
www.ragansmith.com
Products/Services: Transportation Engineering, Civil Eng., Surveying, Landscape Architecture & Construction Services

ROSS BRYAN ASSOCIATES, INC.

1 Vantage Way Ste B-400
Nashville, TN 37228
Primary Contact: Michael Paris
Phone: (615) 329-1300
paris@rossbryan.com

2021 TCA Membership Directory

Engineer Firms/Testing Labs

www.rossbryan.com

Products/Services: Structural Engineering

S&ME, INC.

1413 Topside Road
Louisville, TN 37777

Primary Contact: Jason Feuge

Phone: (865) 970-0003

jfeuge@smeinc.com

www.smeinc.com

Products/Services: Concrete Testing, Soil & Rock Testing, Aggregate Testing, Construction Monitoring Services, Geotechnical Engineering

SMITH SECKMAN REID, INC.

2995 Sidco Dr.

Nashville, TN 37204

Primary Contact: Steve Lane

Phone: (615) 383-1113

slane@ssr-inc.com

www.ssr-inc.com

Products/Services: Engineering Services to Private & Public Entities, Pervious Certified

SOL ENGINEERING SERVICES, LLC

340 Edgewood Terrace Drive
Jackson, MS 39206

Primary Contact: Derek Starling

Phone: (601) 961-1415

dastarling@solengr.com

Products/Services: Engineering, Construction and Project Management, Quality Assurance, Facilities Support, and Information Technology Services

TERRACON CONSULTANTS, INC.

5217 Linbar Dr. Ste 309
Nashville, TN 37211

Primary Contact: Patrick O'Leary

O'Leary

Phone: (615) 333-6444

tonya.bertolino@terracon.com

www.terracon.com

Products/Services: Construction Materials Testing (ACI, ICC, PTI) Geo-technical Engineering & Environmental Consulting Services

THOMPSON ENGINEERING, INC.

630 Chestnut St.

Chattanooga, TN 37402

Primary Contact: Randy Brown

Phone: (423) 756-7970

rbrown@thompsonengineering.com

www.thompsonengineering.com

Products/Services: Consulting, Inspection, Geotech, Materials Testing, Survey & Design

TTL, INC.

5010 Linbar Dr. Ste 153

Nashville, TN 37211

Primary Contact: Martin Medley

Medley

Phone: (615) 331-7770

mmedley@ttlusa.com

www.ttlinc.com

Products/Services: Geotechnical Engineering, Construction and Material Testing, Environmental Testing, Civil Design & Surveying

VOLKERT INC.

1428 Chestnut St. Ste 110

Chattanooga, TN 37402

Primary Contact: Jim Floyd

Phone: (423) 842-3335

aj.donahue@volkert.com

www.volkert.com

Products/Services: Consulting Engineers, Transportation, Roadway, Structural Design, Surveying and Construction Engineering and Inspection (CEI) Environmental.

WOOD KNOXVILLE

2030 Falling Waters Rd Ste 300
Knoxville, TN 37922

Primary Contact: Kelvin Campbell

Campbell

Phone: (865) 429-4509

kelvin.campbell@woodplc.com

Products/Services: Engineering Services

TCA SCHOLARSHIP RECIPIENT SENDS NOTE OF GRATITUDE

Recently, we received a very thoughtful letter from a scholarship recipient, Joseph McDaniel, thanking TCA's members for choosing him as a recipient. To say our hearts were warmed would be an understatement. We thought it might do the same for you! Clearly, Mr. McDaniel is well on his way to a successful career in the concrete industry.

Each year our TCA Foundation Golf Tournament provides the primary source of funding for the Concrete Industry Management scholarship program. TCA was one of the first organizations to offer student scholarships to the CIM program and since its inception we have provided scholarships to over 40 different students with the majority of this funding coming from our annual golf event.

Please help to continue this great tradition of scholarships by registering today to play in the TCA Foundation Golf Tournament this Oct. 26th at Greystone Golf Course in Dickson, TN. Scholarship recipients like Mr. McDaniel will appreciate your participation more than you know!

Mr. Alan Sparkman

Tennessee Concrete Association

699 President Place Suite 400

Smyrna, TN 37167

Mr. Sparkman,

I would like to thank you for awarding me the Tennessee Concrete Association Scholarship! It is truly an honor to receive this scholarship, and I am very grateful to have been chosen. This scholarship will be so helpful as I pursue a career in the concrete industry. I am looking forward to being able to put these funds to use, and I will not forget your generosity. Know that you are a great contributor to my success.

Concrete has always been a big part of my life. I am a 5th generation concrete finisher. When I was nine years old, I started working with my Dad and Granddaddy pouring concrete. I loved learning the trade and working with others. Now, I am pursuing my own career in concrete at MTSU. I am not certain where I will fit into this industry just yet, but I know God will lead me there. Thank you again for helping me reach my goals and carry on a legacy!

Sincerely,

Joseph McDaniel

CIM UPDATE

by Jon Huddleston, Associate Professor & CIM Director

CIM SPRING FUNDRAISING

The CIM Jim Speakman Golf Tournament is back to full capacity and held on May 5 with both morning and afternoon flights. Fifty-two teams and 208 golfers helped CIM Patrons raise \$103,500.



CIM 3050 BENEFITS SPECIAL NEEDS CHILD



Professor Huddleston's CIM 3050 was approached by the MTSU Day Care to pour sidewalk access so a special needs child could access the playground instead of rolling their wheelchair through the mud. The class also served the MTSU community by pouring a handicap accessible sidewalk for the Chris Young Café.



STUDENT COMPETITIONS

Due to Covid cancellations and shutdowns, many student competitions for the past year have been cancelled or postponed. However, no CIM students want to sit idle, so the four schools competed amongst themselves by making concrete tensegrity tables that will be judged by independent industry professionals.



SCHOOL OF CONCRETE AND CONSTRUCTION MANAGEMENT BUILDING UPDATE

The School of Concrete and Construction Management hosted a groundbreaking for the new \$40 million 54,000 square foot building on April 6. The building is currently under construction on a 15 month timeline and expected to open August of 2022.



RESEARCH

Dr. Brown and Jessie Boone with Southeast Portland Cement Association continued their full depth reclamation study through TDOT to assist them in updating their state specifications as well as create a quality control manual for future projects. They are focusing on cement stabilization in the field and investigating asphalt emulsion in the lab.



Dr. Zhifu Yang is in the middle of a \$220k TDOT research grant looking at recycled concrete aggregate for specification by the DOT and Nashville Davidson County Public Works.





IMPORTANT DOCUMENT UPDATES PLEASE KEEP READING!

It is hard to believe that 2020 is over and 2021 is already half-way behind us. While we have all had our noses to the grindstone several important documents have been written or updated that could have a significant impact on ready mix producers and others in the concrete industry. **Please keep reading!**

IMPORTANT ASR FINDINGS

In late 2020 an article was published by researchers at the University of Tennessee (and others) that documents the presence of alkali silica reactive aggregates in each of the four TDOT regions. It is critical that producers know whether their aggregates are potentially reactive, and how to mitigate (prevent/reduce) detrimental ASR related expansion and cracking. Please read the article titled *Important Update Concerning Alkali-Silica-Reactivity (ASR) and Tennessee Limestones* included in this issue of the Tennessee Concrete Magazine for more information.

ASTM C94 STANDARD SPECIFICATION FOR READY-MIXED CONCRETE

ASTM C94 is referenced in most construction specifications. Since 1935 there has been a requirement in ASTM C94 that requires concrete discharge to be completed within 90 minutes after the introduction of the mixing water to the cement and aggregates or the introduction of the cement to the aggregates. In 2021 the 90-minute requirement was removed, although the requirement for a time limit was not removed. The new version requires the purchaser to specify in the purchase order the time required for discharge to be completed. If a time is not specified then the producer is required to specify the time limit, and in either case the purchaser is required to state the discharge time limit on the delivery ticket. The new version of C94 does not prevent 90

minutes or another time limit from being specified in the project specification. Although it may be some time before the new version of C94 is referenced in project specifications, producers and others in the industry need to prepare for this change.

ACI 301 SPECIFICATIONS FOR CONCRETE CONSTRUCTION

In 2020 ACI 301 changed its name from *Specifications for Structural Concrete* to *Specifications for Concrete Construction*. The revision brings the specification more in line with the current version of the ACI 318 building code as well as adds shotcrete, internal curing, mineral filler and recycled concrete aggregates to the scope while also making it clear that the 301 specification is not limited to structural concrete.

ACI 332 CODE REQUIREMENTS FOR RESIDENTIAL CONCRETE AND COMMENTARY

In 2020 ACI 332 was revised. The most notable changes were made to the exposure categories and classes for concrete mixtures. The changes make the document more consistent with the exposure classes and categories of the current ACI 318 building code. Most notably, the current requirements now specify maximum water cement ratios instead of slump, and the minimum required strength for the most severe freeze-thaw exposure class changed from 4,000 psi to 4,500 psi for unreinforced concrete and 5,000 psi for reinforced concrete.

Please continue to visit our website and read our member updates to keep up on important industry changes.

Info Link

DIRECTORY 2021 VOL. 35, NO. 2

Blalock Ready Mix7
Charah Solutions32
Durafiber, Inc.....31
Form-A-Drain2
Lafarge North America7
Multi-Vibe.....15
Sicalco, LTD.....7
Southern Concrete.....31
TCA Golf Tournament5
Vulcan Material7

WELCOME TWO NEW ADVERTISERS:



**Charah
Solutions**

Service Above All®

FORM-A-DRAIN®

**THIS IS THE SPACE YOU'VE
BEEN LOOKING FOR**

Support Your Association
by advertising with
TNConcrete Magazine

FOR ADVERTISING RATES AND INFO
Call Morris at 615-349-1890



"Serving the South Since 1943"

www.southernconcrete.com

**Corporate Office: (731) 968-2537
P.O. Box 1090 • Lexington, TN 38351**



Radio Dispatched GPS Trucks
for Fast, Dependable Service



Bolivar (731) 658-6105
Dyer (731) 692-3462
Humboldt (731) 784-5696
Henderson (731) 989-9723
Jackson (731) 422-3358
Lexington (731) 968-2537
Milan (731) 686-2288
Paris (731) 642-6672
Union City (731) 885-7060

**"Building the South with top quality ready mix concrete
& masonry products at a reasonable price."**

Durafiber
We're
Durafiber
reinforcing
Durafiber
our reputation
Durafiber
one job
Durafiber
at a time!

Durafiber™ inc.
4825 Trousdale Drive, Suite 205 • Nashville, TN 37220
(615) 333-9882 Fax
(615) 333-9883



SUSTAINABLE FLY ASH SUPPLY. **MULTISOURCE® DELIVERS NATIONWIDE.**

Charah Solutions is a leader in delivering a responsive, consistent and reliable supply of fly ash and other sustainable materials to concrete producers for the production of green concrete. Our MultiSource® materials network, with nearly 40 nationwide terminals and locations, provides concrete producers with a continuous supply of high-quality materials. We get it to you when and where you need it, with a network of barge, rail and truck services for on-time delivery. **For more information, contact us at 877-314-7724 or visit charah.com/flyash.**

Your Supply Solution For:

- Class C fly ash
- Class F fly ash
- Bottom ash
- Integrated Gasification Combined Cycle (IGCC) slag
- MultiPozz™ pozzolan
- Gypsum



Charah
Solutions

Service Above All®