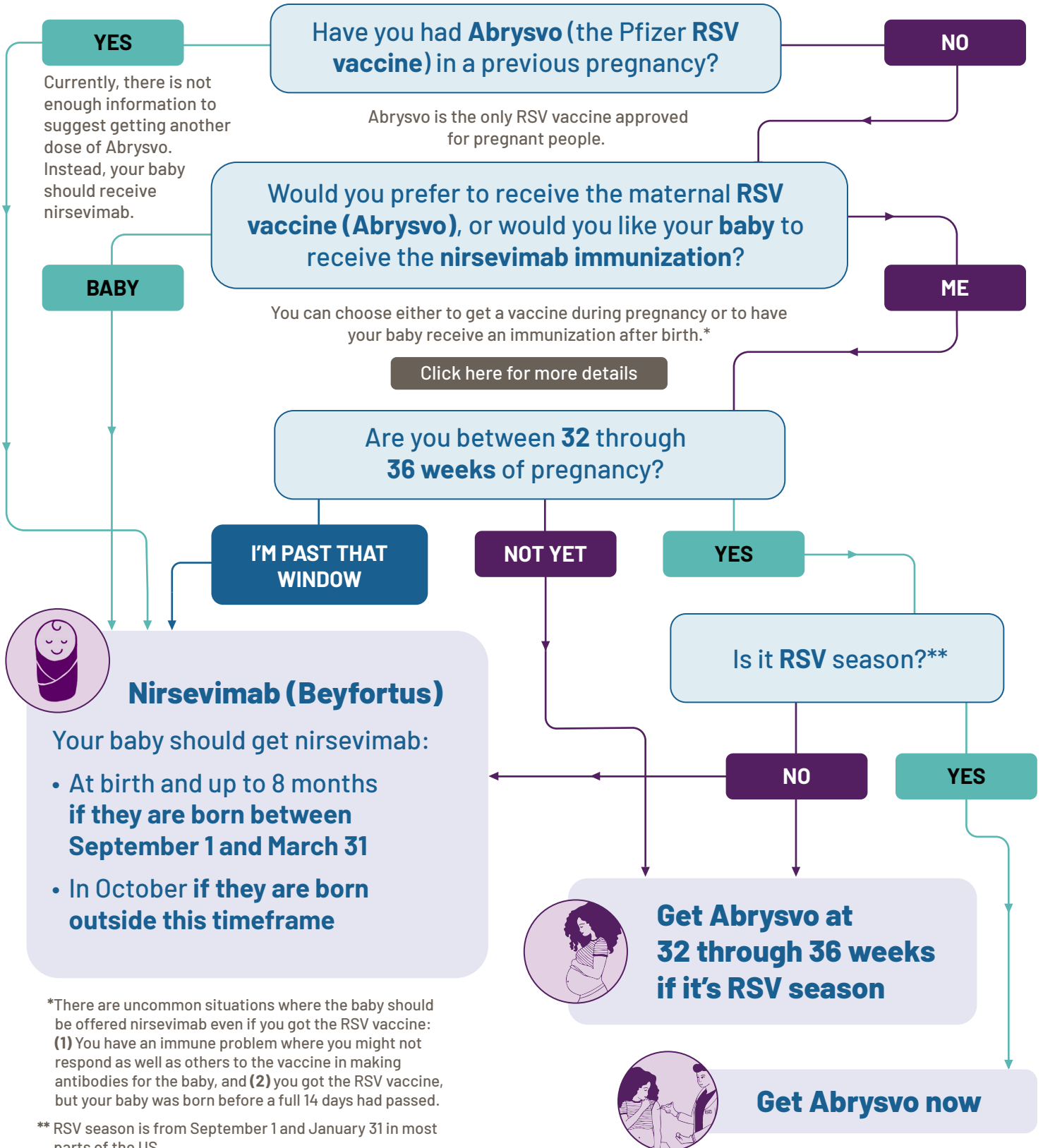


Decision Guide: How to Protect Your Baby Against Respiratory Syncytial Virus (RSV) During Pregnancy

RSV can lead to severe illness in babies under 6 months and is the leading cause of infant hospitalizations in the US.



*There are uncommon situations where the baby should be offered nirsevimab even if you got the RSV vaccine: (1) You have an immune problem where you might not respond as well as others to the vaccine in making antibodies for the baby, and (2) you got the RSV vaccine, but your baby was born before a full 14 days had passed.

** RSV season is from September 1 and January 31 in most parts of the US.