

Abrysvo (Pfizer's RSV Vaccine)



The only approved vaccine for use in pregnancy to prevent severe RSV disease

NOT Arexvy or mResvia*

Respiratory syncytial virus (RSV) is the leading cause of hospitalization in infants from birth to 6 months in the US.



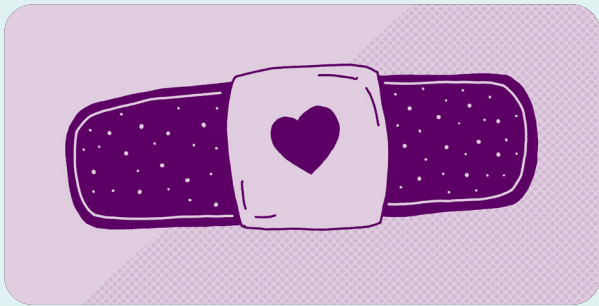
Per the **Centers for Disease Control and Prevention**, each year in the United States, an estimated **58,000 to 80,000** children younger than **5 years** are hospitalized due to **RSV**.

Infants born to people who received Pfizer's RSV vaccine during a prior pregnancy (or who decline this vaccine) should receive nirsevimab.

**Arexvy (GSK) and mResvia (Moderna) are not approved for pregnant people.*



THE FACTS



Recommended for pregnant people who:

- Are between 32 0/6 weeks and 36 6/7 weeks of pregnancy during RSV season,
- Do not plan to deliver in the next 2 weeks, **AND**
- Did not receive Abrysvo in a previous pregnancy.

Can be co-administered with other routine maternal immunizations, including Tdap, influenza, and COVID-19 vaccines.

- No minimum waiting period between vaccines if a patient wants to get these vaccines at different times.

Is administered seasonally, between **September 1st** to **January 31st** in most of the continental US.

Recommendations may be updated in the future as additional data becomes available.



Access and Vaccine Referral Options

- 1 Stock and offer at your office, **OR**
- 2 Recommend Abrysvo and refer pregnant individuals to:
 - Retail or community pharmacies
 - Health departments
 - Community clinics
 - Travel clinics



Vaccine Cost for Patients

- Commercially insured patients: may be as low as **\$0** when administered in network
- Patients covered through state Medicaid programs: **\$0**
- Pregnant individuals aged 18 or younger: **\$0** through Vaccines for Children

Pfizer Rx Pathways is a patient assistance program for those who are uninsured or unable to meet the copays.

The cost estimates do not include administration fees or copays, which may vary across plans.