

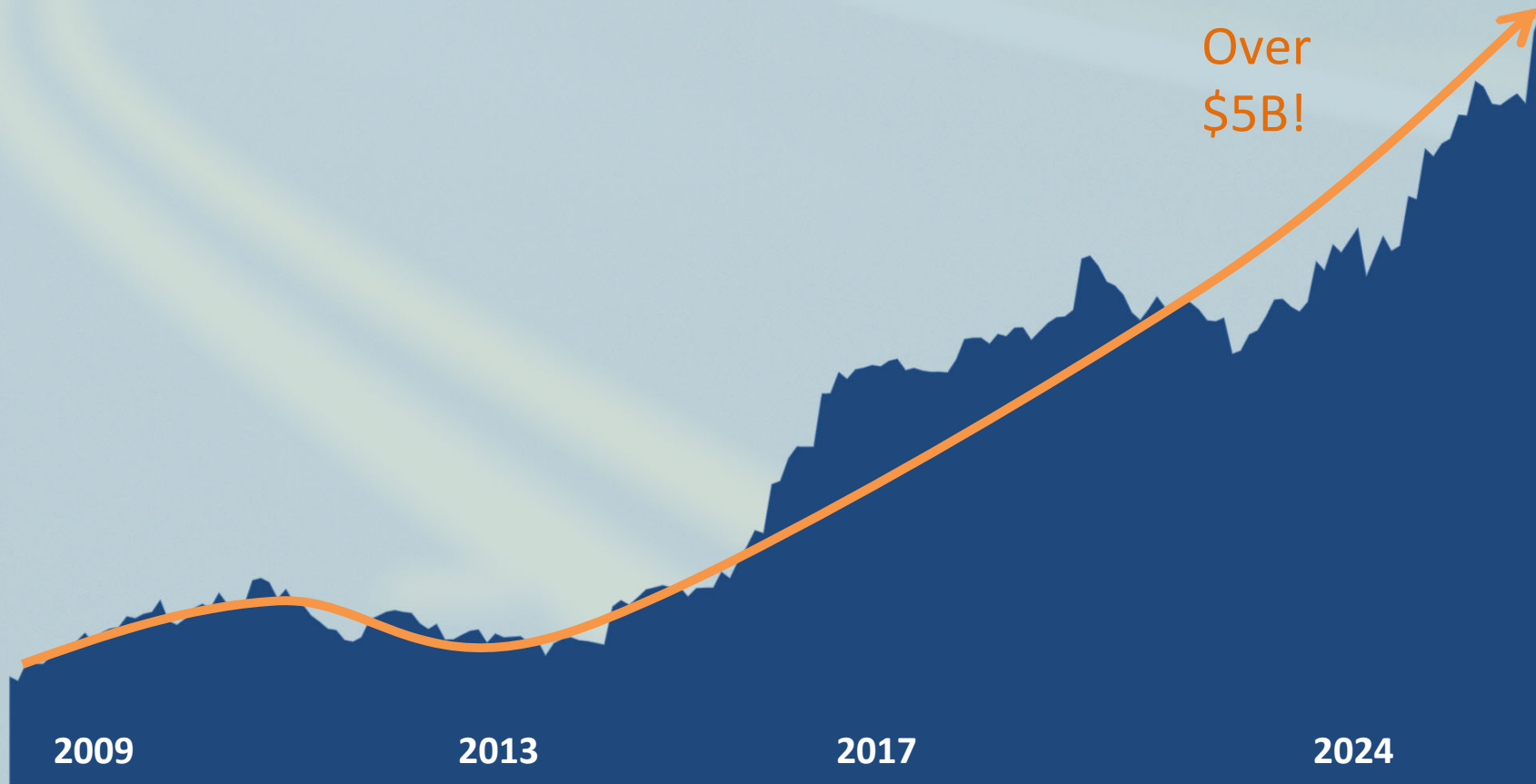
# SCDOT Update SCAPA Winter Conference

February 21, 2024

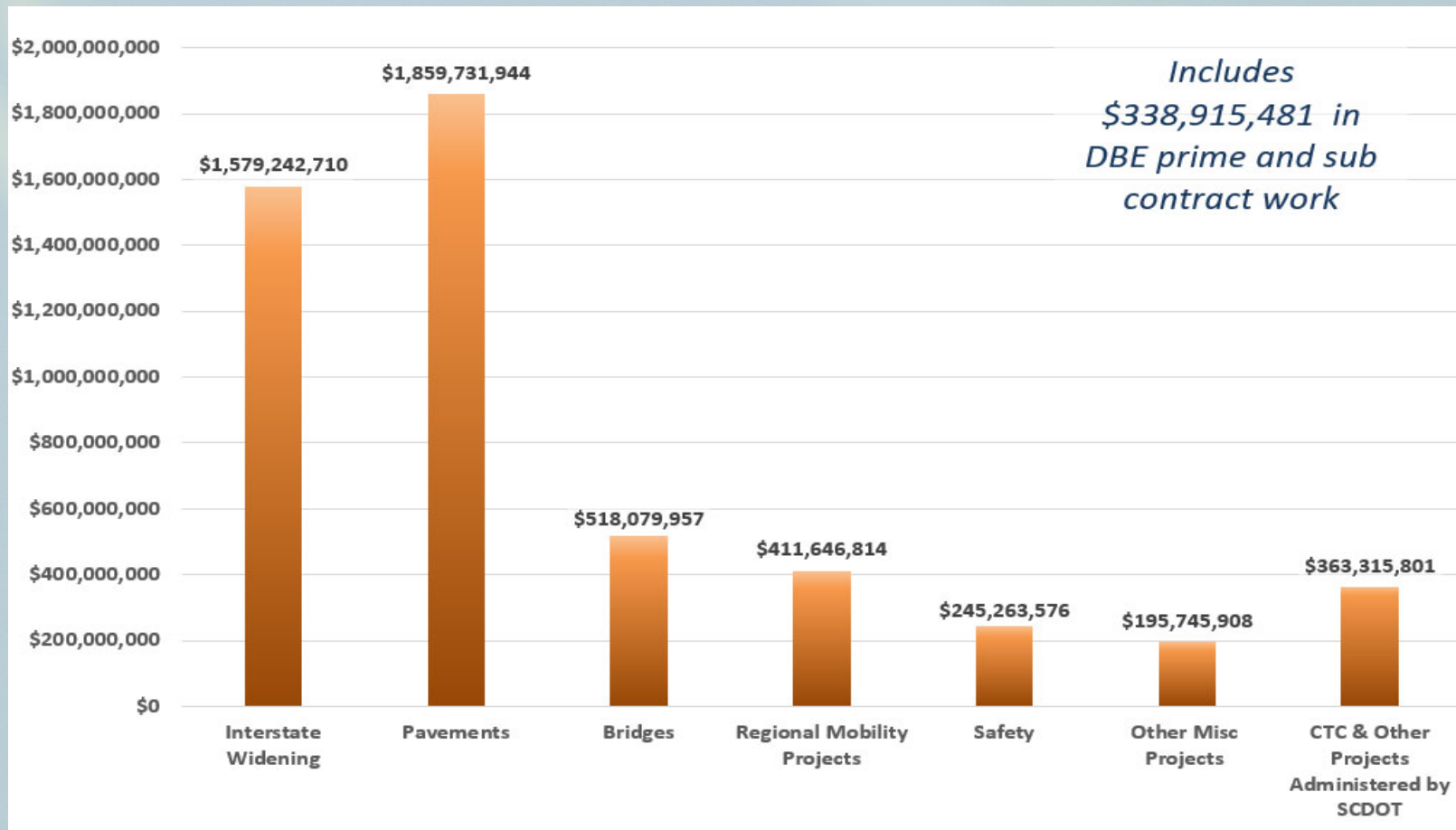


**SCDOT**

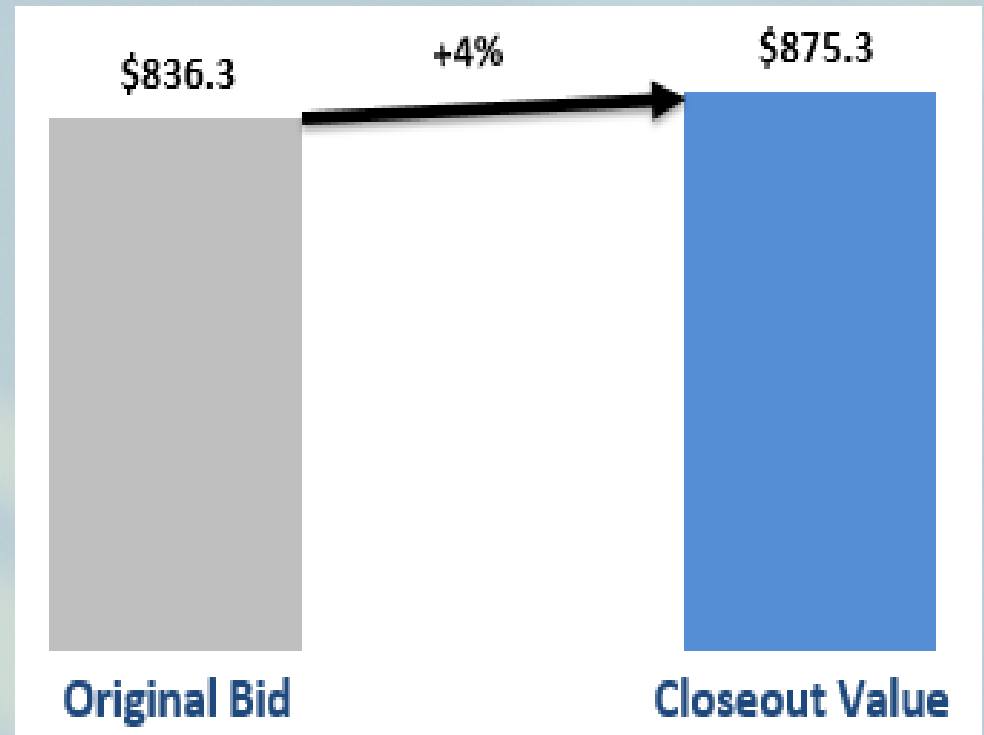
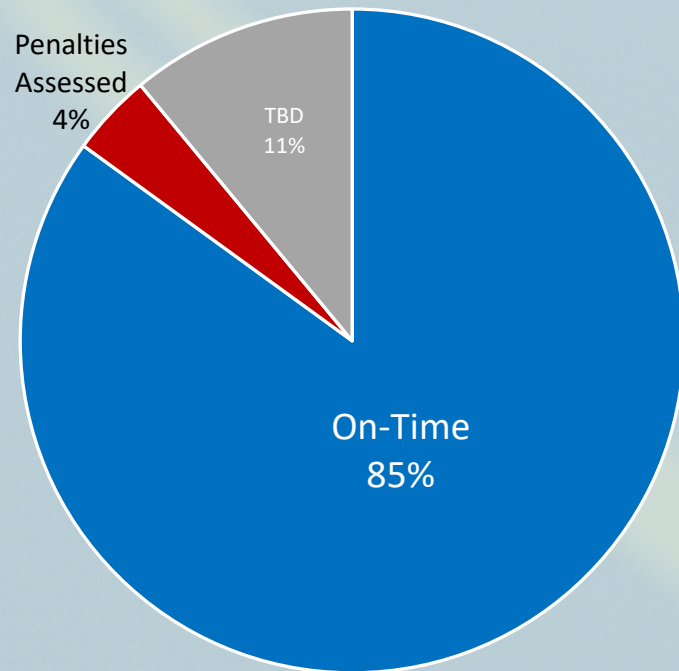
# SCDOT has Dramatically Increased its Work Program



# \$5.2B Construction Program



# Construction Program



# 10-Year Plan Accomplishments

## *Rural Road Safety*



**980 miles**

The completed projects have seen a 24% reduction in Fatal and Serious Injury crashes

## *Paving*



**>7700 miles**

Paving projects are being accomplished in every county of the State

## *Bridges*



**335 bridges**

Bridges must continue to be a major focus and an area for additional investment

## *Interstates*



**101 miles**

Work is underway on nearly every interstate in the State

# Paving Program

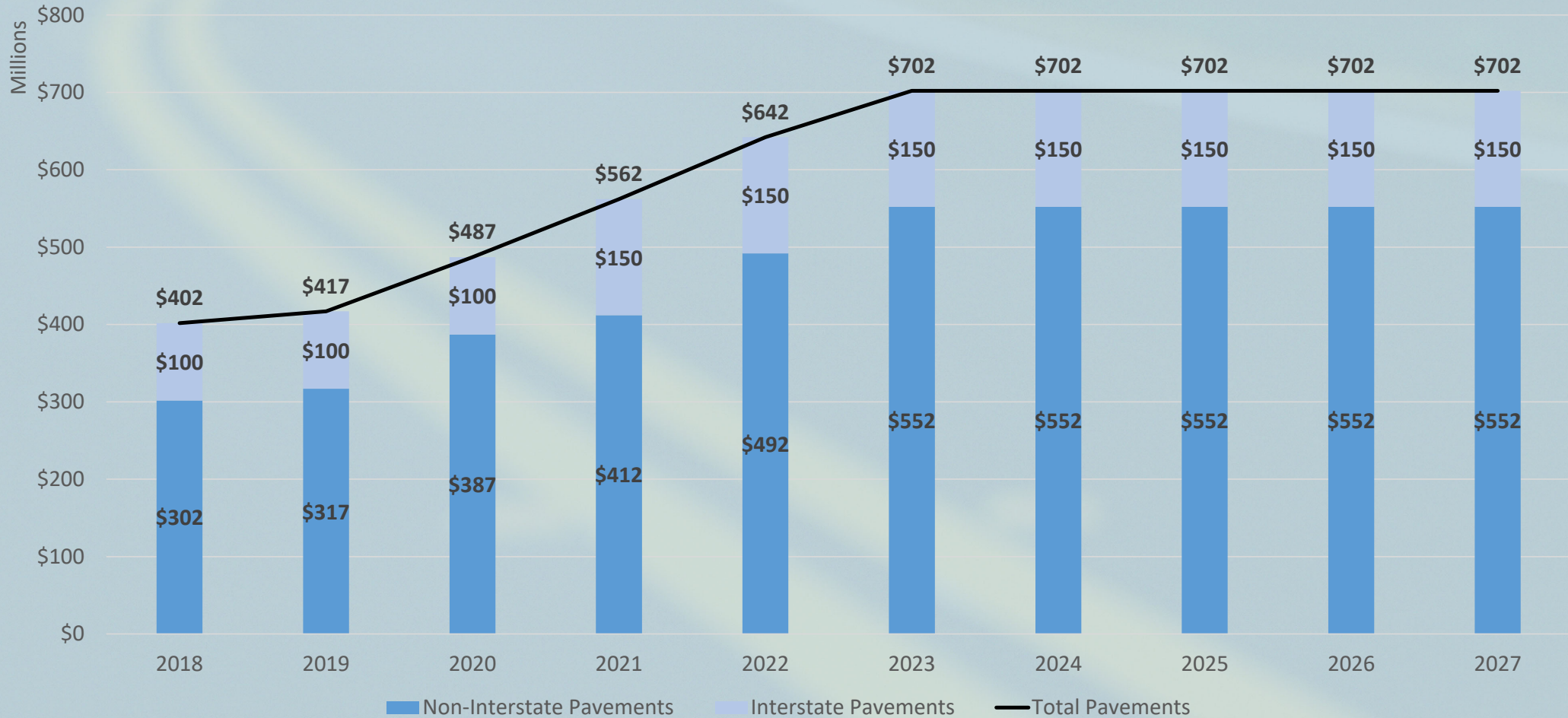


**SCDOT**

# SCDOT Pavement Improvement Summary

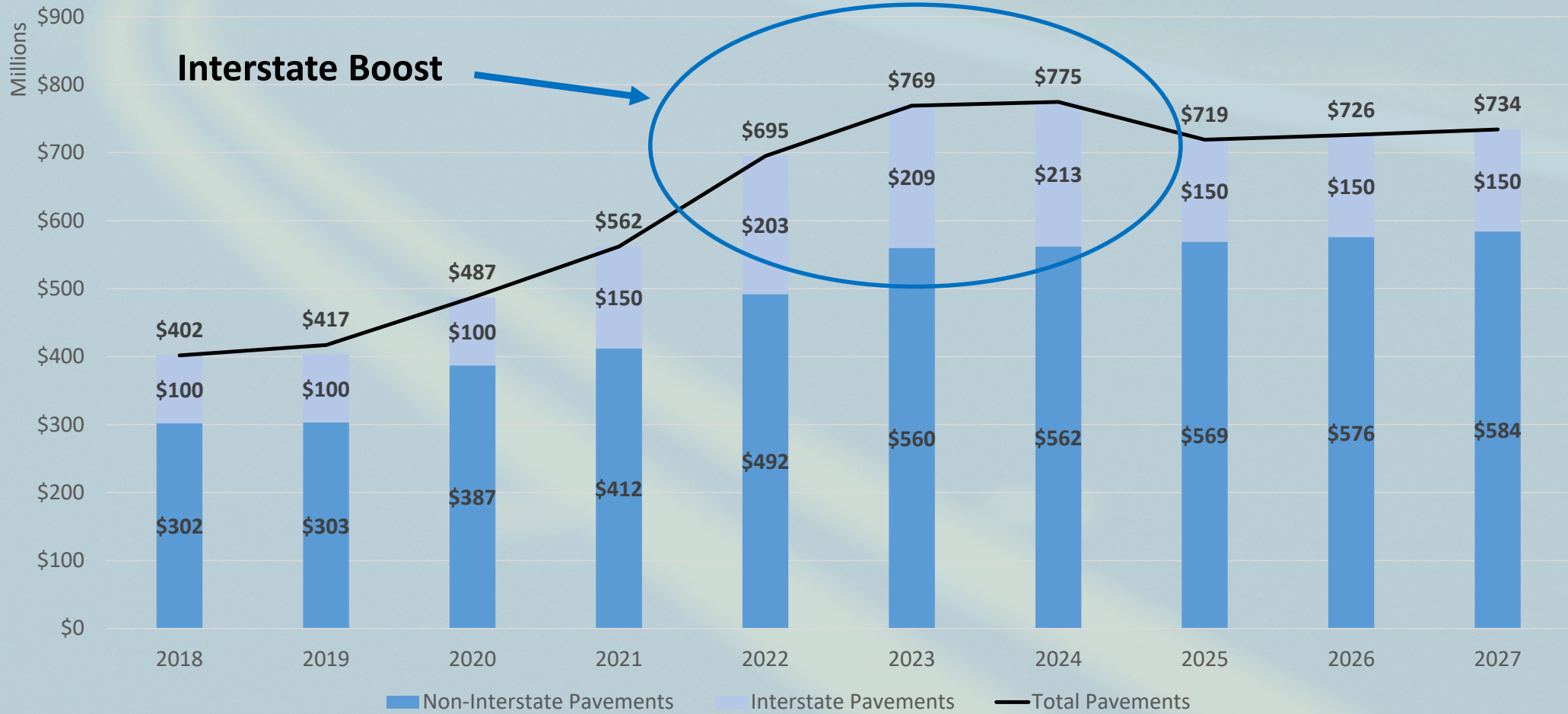
- Act 98 (2014)
- Act 275 (2016)
- Act 40/Roads Bill (2017)
  
- Shifted all non-interstate programs from federal-aid to state program
- Eliminated the Statewide NHS Paving Program & distributed those funds to counties based on formula
- Shifted from County/District lettings to Market Area lettings
  
- Shifted from conditions based split on preservation/resurfacing to **up to 10%** preservation allowed
  
- Shifted interstate pavement program from federal-aid to a primarily state funded program

# Original 10 Year Plan for Pavements





# Adjusted 10 Year Plan for Pavements

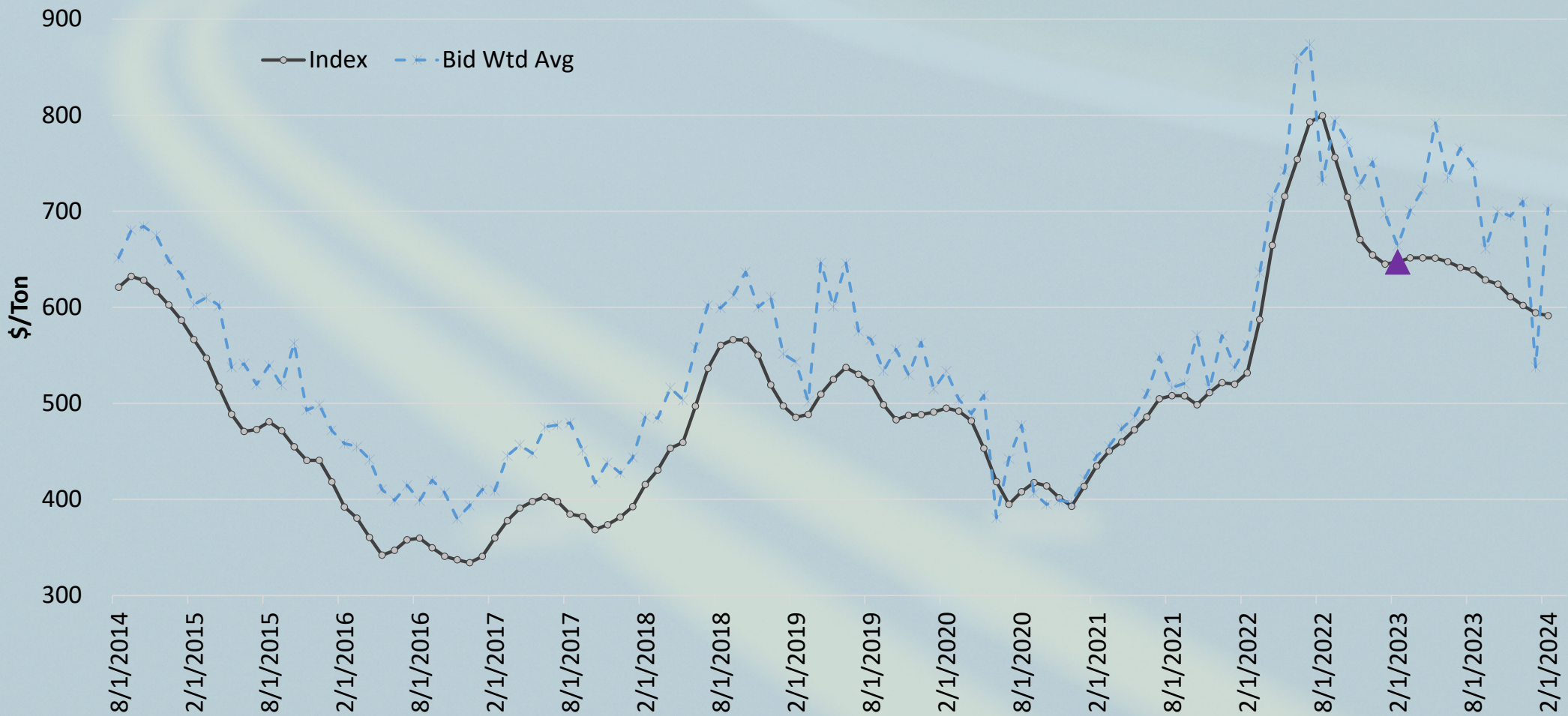


# Interstate Pavement Projects

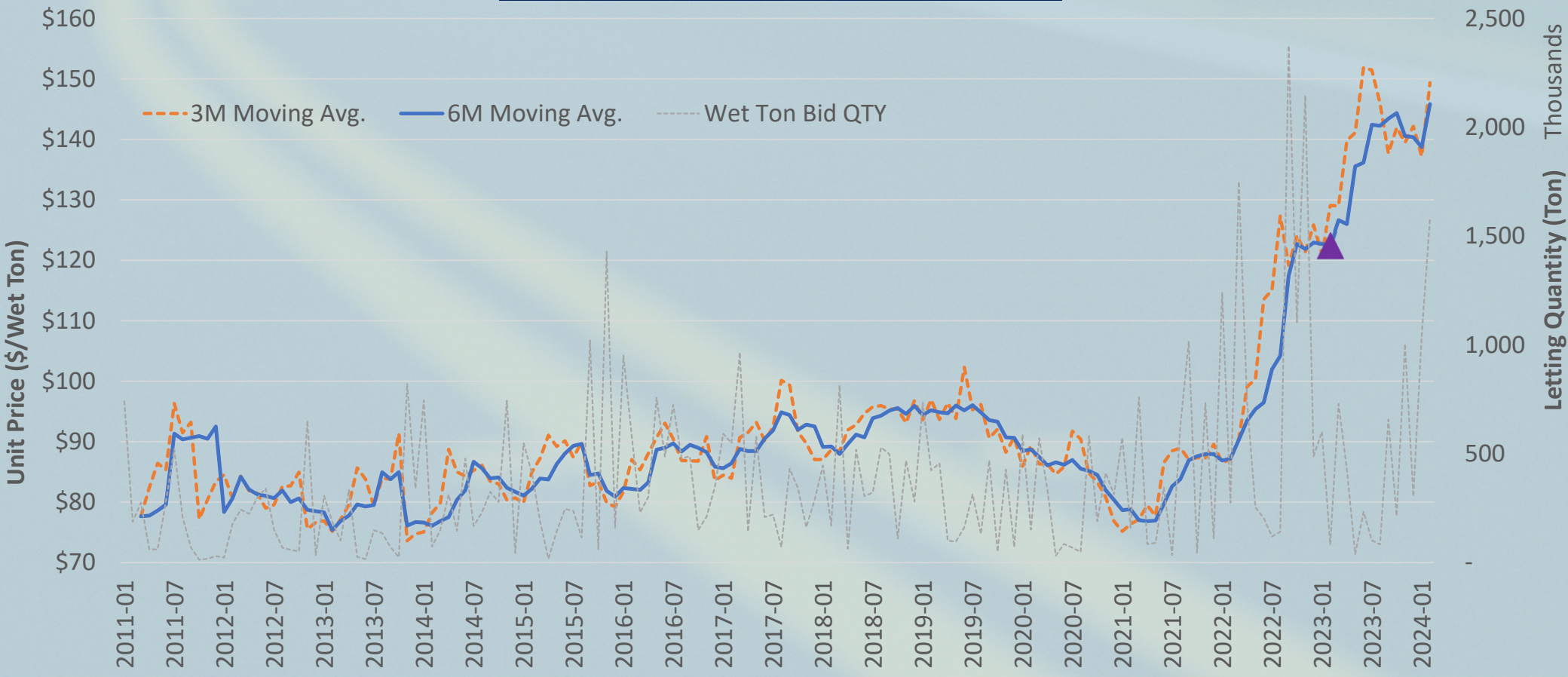


I-95	171-193 NB	Resurfacing	Construction
I-20	23-37 EB	Resurfacing	Construction
I-95	86-99	Resurfacing	Construction
I-526	10-16,27-29	Resurfacing	Construction
I-20	37-50 WB	Resurfacing	Construction
I-26	125-136	Resurfacing	Construction
I-20	84-94	Resurfacing	Construction
I-95	134-147	Resurfacing	Construction
I-26	182-187	Resurfacing	Construction
I-26	0-18	Resurfacing	Construction
I-20	70-76	Resurfacing	Construction
I-385	23-31	Resurfacing	Construction
I-85	43-49,53-56, 67-69	Resurfacing	Construction
I-26	74-85	Rehabilitation	Construction
I-26	149-172	Rehabilitation	Construction
I-95	33-68	Rehabilitation	Construction
I-95	68-86	Rehabilitation	Construction
I-85	0-19	Resurfacing	Construction
I-26	109-115	Resurfacing	Fall '24
I-26	43-60	Resurfacing	Fall '24
I-77	64-76	Resurfacing	Fall '24
I-20	94-106	Resurfacing	Fall '24

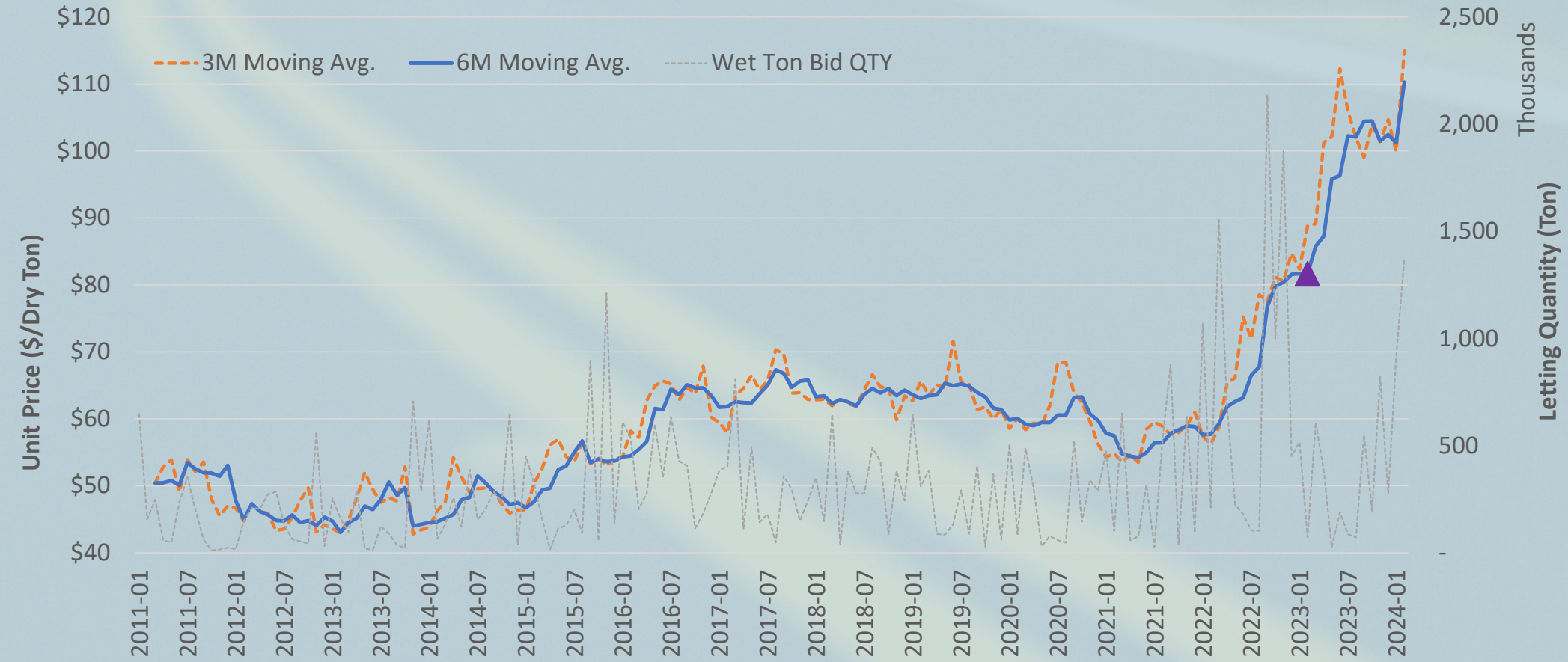
# AC Binder Index and Weighted Average Bids



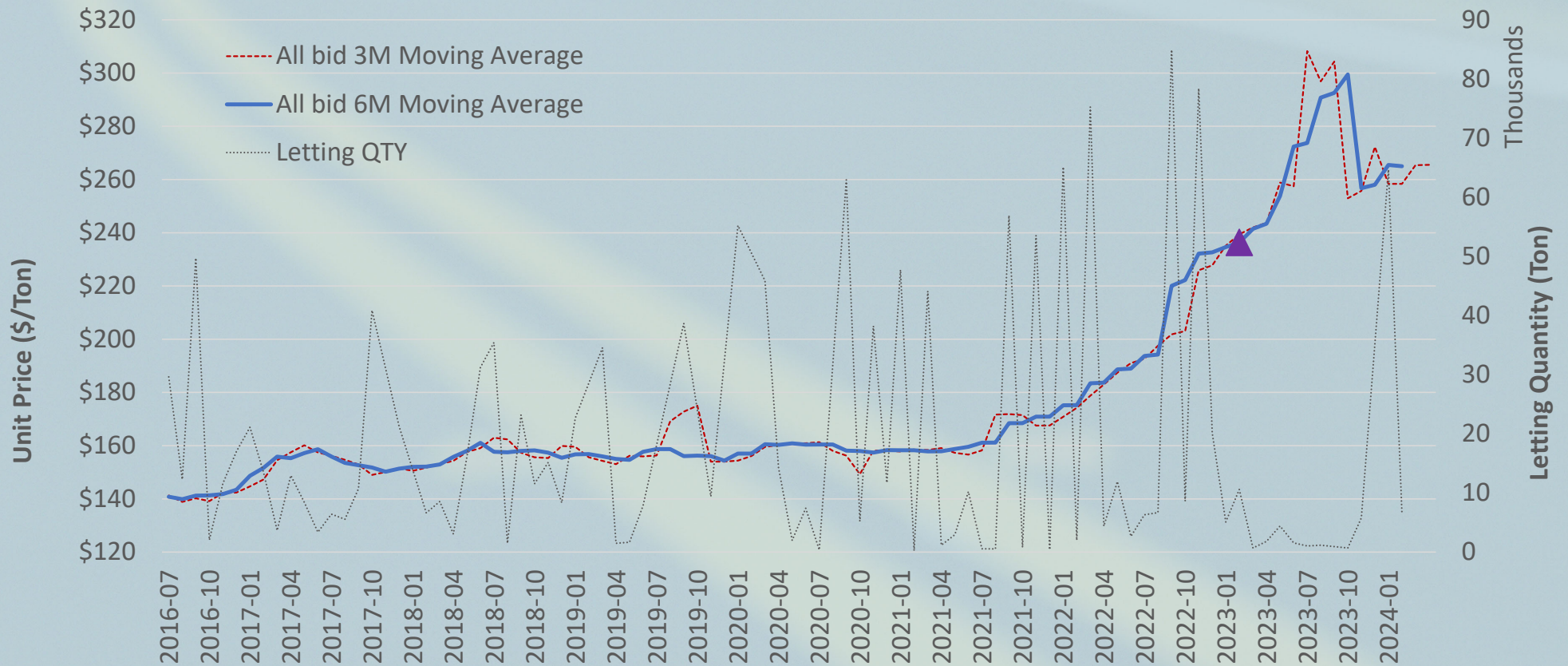
# All Asphalt (including SY Items) - Weighted Average Wet Ton Unit Price



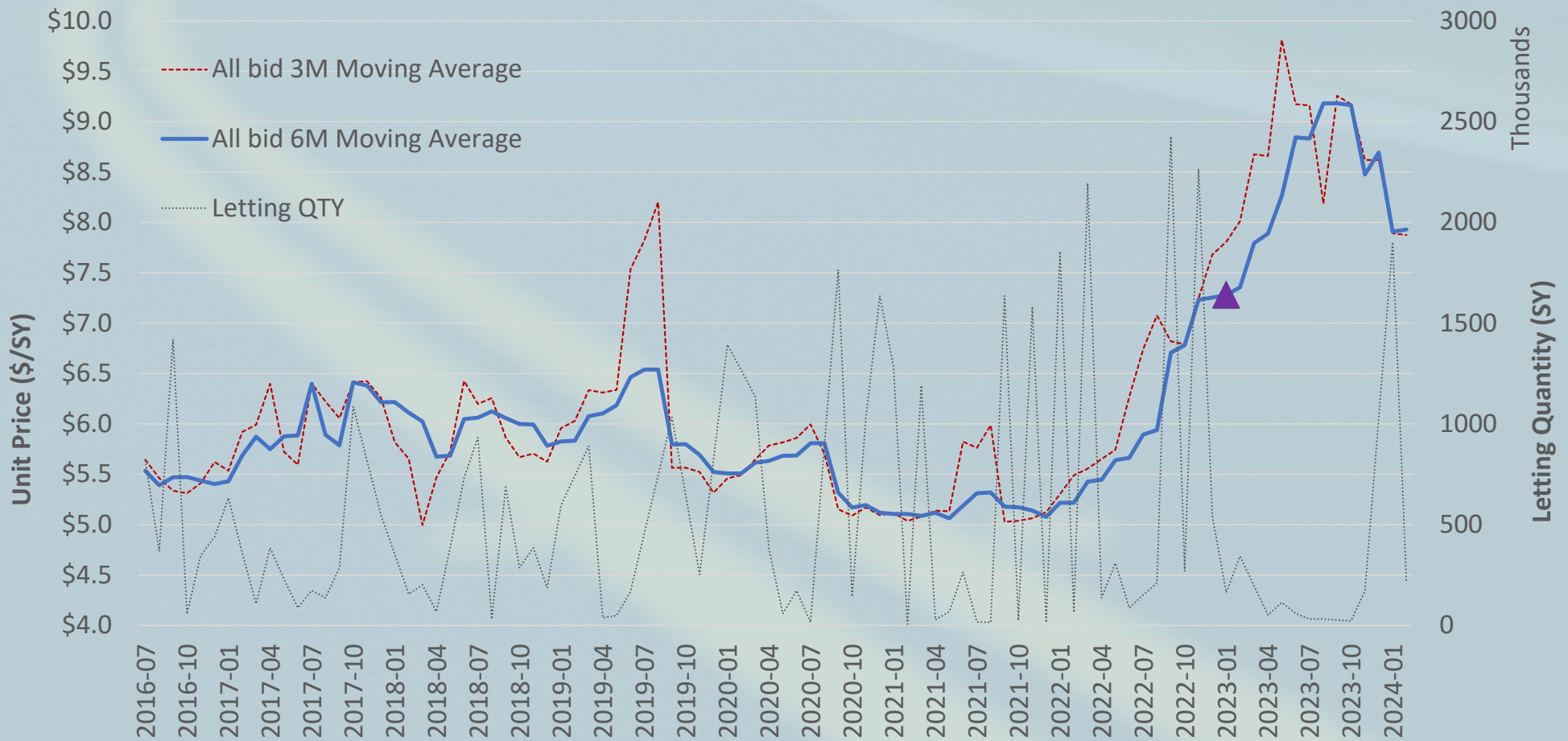
# Weighted Average Dry Ton Unit Price (w/o SY Items)



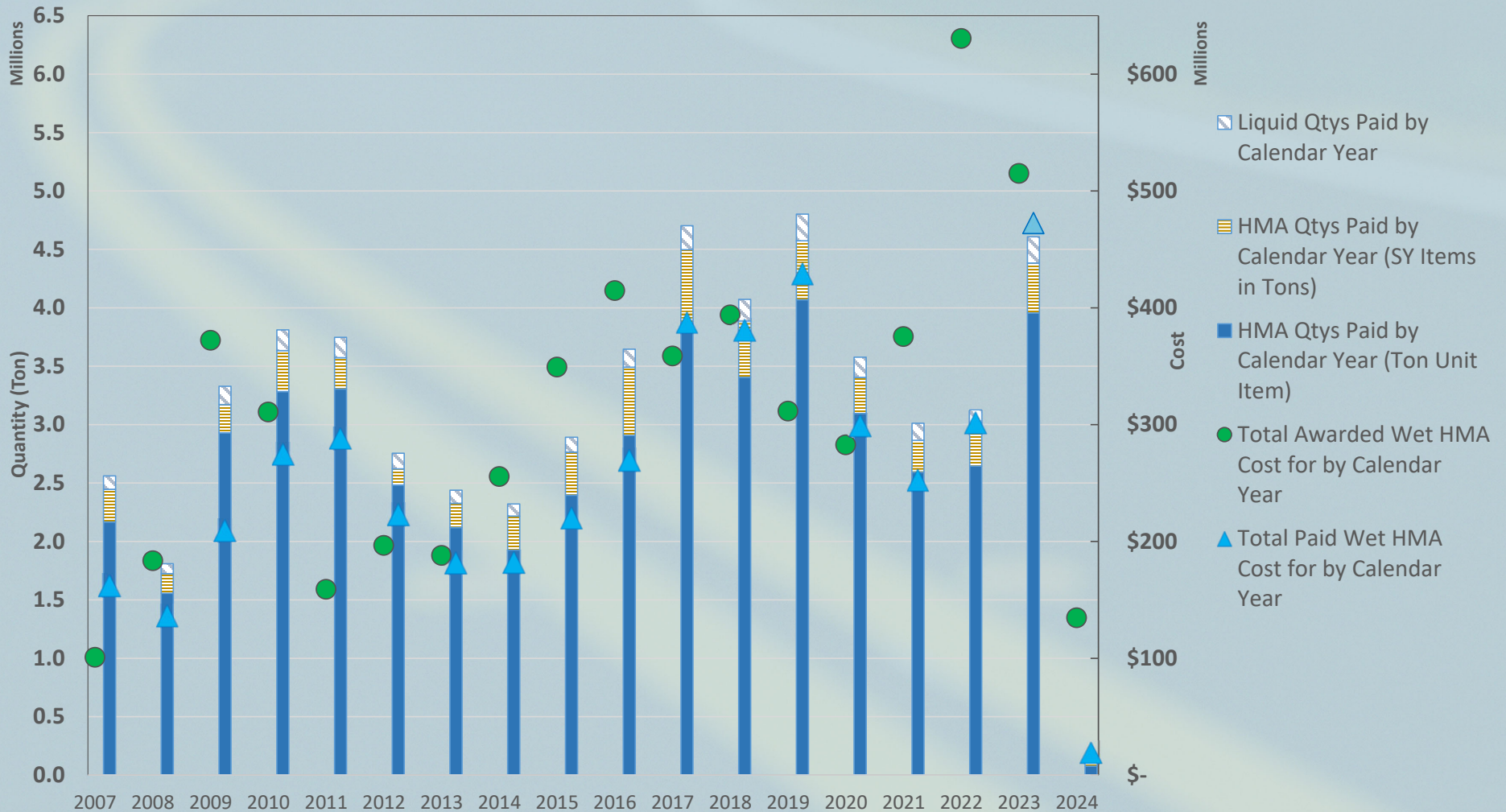
# Portland Cement for Cement Modified Recycled Base Course (Ton)



# All CMRB Mixing Price (SY) Weighted Average Bid Price



# Total Asphalt Quantity and Cost By Calendar Year – Design Bid Build





# Asphalt Quantity in Wet Tons - Active DBB Contract Quantity

Adjusted Completion Year	Remaining Asphalt Wet Ton Quantity	Production 2021-2023		Estimated Time Needed (Year) Based on 2020-2022 Paid Quantity
		MIN.	MAX	
2024	4,579,332	<b>3,011,921</b>	<b>4,607,912</b>	0.99 - 1.52
2025	3,069,625			0.67 - 1.02
2026	1,033,355			0.22 - 0.34
2027	124,956			0.03 - 0.04
<b>Total</b>	<b>8,807,267</b>			<b>1.88 - 2.88</b>



# Estimate Total by Calendar Year – 3064000 PORTLAND CEMENT FOR CEMENT MODIFIED RECYCLED BASE COURSE (Ton)

Estimate Year	Paid Quantity	Awarded Quantity
2013	36,675	61,689
2014	47,849	141,737
2015	131,157	166,743
2016	114,085	185,442
2017	149,248	137,386
2018	110,478	153,950
2019	139,561	144,535*
2020	123,362*	241,404
2021	141,110*	218,172
2022	123,518*	359,063
2023	159,033*	29,347
2024	932	64,672



\*: Includes estimated quantity from Contract ID 8847060 (I-26 widening from Exit 85 to Exit 101, Design Build, let 05/2019)

## 3064000 (PORTLAND CEMENT FOR CEMENT MODIFIED RECYCLED BASE COURSE) - Active DBB Contract Quantity

Adj. Comp. Year	Active Contract Remaining Quantity	# of Contracts	Paid Cement Tonnage 2021-2023		Estimated Time Needed (Year) Based on 2020-2022 Paid Quantity
			MIN	MAX	
2024	186,066	47	<b>123,518</b>	<b>159,033</b>	1.17 – 1.51
2025	76,957	20			0.48 - 0.62
2026	12,832	1			0.08 – 0.10
<b>Grand Total</b>	<b>275,854</b>	<b>68</b>			<b>1.73 – 2.23</b>



# Upcoming Paving Program Quantities

**Portland Cement for CMRB (Tons)**

Letting	Cement Tons
February 2024	6,519
March 2024	46,422
April 2024	22,957
May 2024	TBD

**Asphalt Quantities (SY items in Tons)**

Letting	Asphalt Tons
February 2024	1,581,451
March 2024	1,342,101
April 2024	481,181
May 2024	TBD

# Questions



**SCDOT**