

STRUCTURAL BUILDING COMPONENTS™

THE FUTURE OF FRAMING

April 2009

www.sbcmag.info

2009 SBCA
Membership
Directory

**SBCRI
Reveals
Data from
Wall
Bracing
Tests**

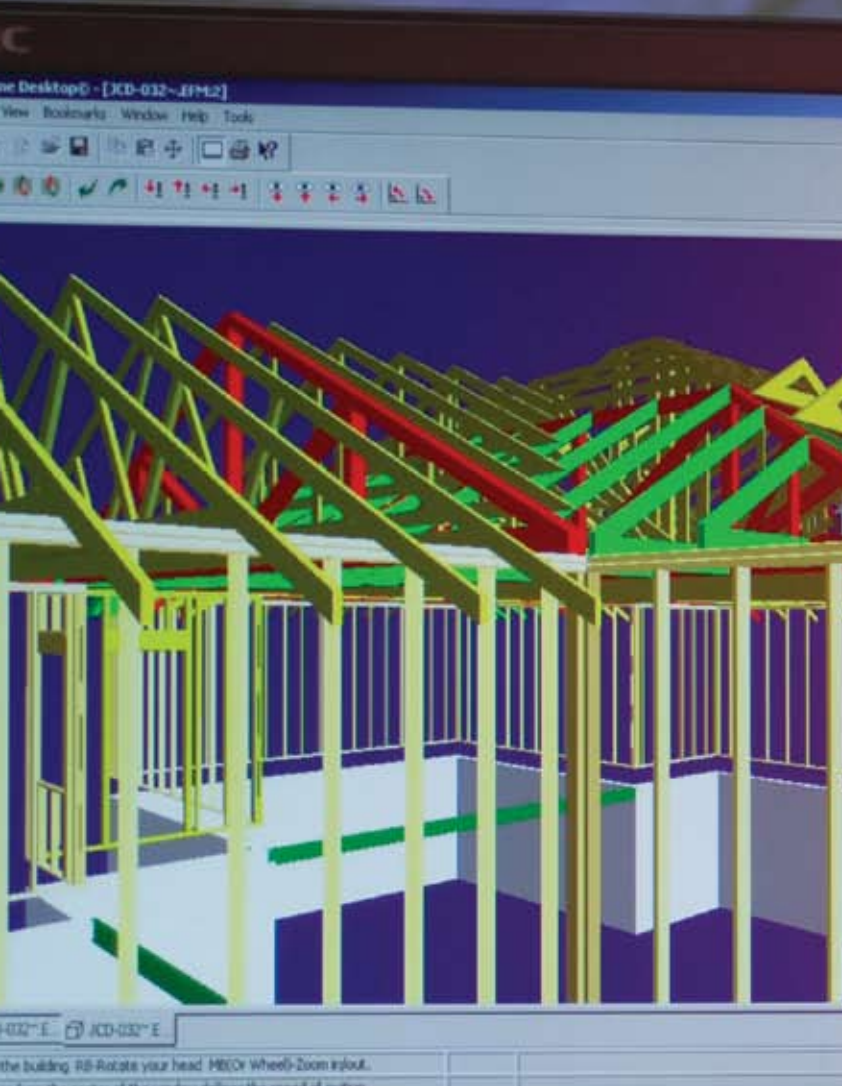
Framing the
**AMERICAN
DREAM**

PRRST STD
U.S. Postage
PAID
Madison, WI
Permit No. 2223

CHANGE SERVICE REQUESTED

SBC Magazine • 6300 Enterprise Lane • Suite 200 • Madison, WI 53719

A NEW GENERATION OF SOFTWARE TOOLS DESIGNED TO HELP YOU BUILD A COMPETITIVE EDGE.



Plant Owners:

TrussFramer from MiTek will help you survive today and prosper tomorrow

Whether you're a component manufacturer or provide complete framing solutions to the building industry, your success relies on improving accuracy and efficiency - from design through production. TrussFramer whole house structural design software will help you operate more profitably today, and it's flexible enough to grow with your changing business needs of tomorrow.

• 3D INTERFERENCE DETECTION

TrussFramer continuously highlights framing problem areas, helping you solve problems before construction begins and avoiding costly back charges.

• FRAMING BILL OF MATERIALS

Easily take-off and price lumber, sheathing, beams, hangers and posts from one model that's automatically updated as members are added or removed.

• 3D EDITING & SMART MOVE

Make fast, efficient edits in 3D. Move any piece and Smart Move™ will highlight and give you control over all related items. Move out a side wall and watch TrussFramer automatically fill in all items with one click.

MiTek®

**MACHINERY
ASSURANCE
PROGRAM**

Makes Your "New" Used Equipment
Perform Like New

www.mii.com/mittekassurance

For reader service, go to www.sbcmag.info/mittek.htm

MiTek® TRUSSFRAMER™

Whole House Design Software

Designers and Engineers: Get more productivity with fewer errors

Whether one designer takes the project from start to finish or you have different departments work on different elements, TrussFramer will streamline workflow by saving the entire job to one file. Create one model for the entire plan, not individual models for each level. Create more competitive structural designs from load transfers based on true bearing contact between members.

MITEK 20/20 INTEGRATION

A seamless integration with MiTek 20/20 Engineering ensures accurate truss designs and eliminates duplication. Changes in either layout or engineering are updated instantly in the other.

INTELLIGENT ROOF FRAMING SETS

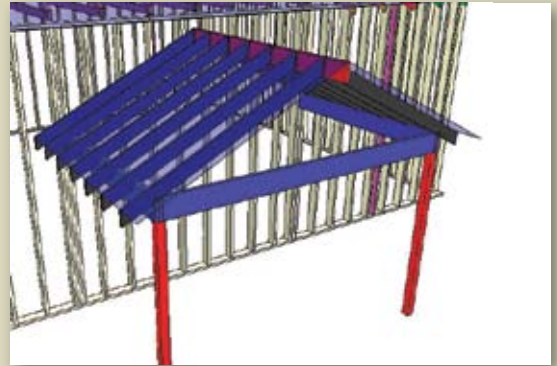
Easily switch from one hip end style to another without deleting and re-inputting the trusses.

PROFESSIONAL GRADE TRUSS DESIGN SOFTWARE

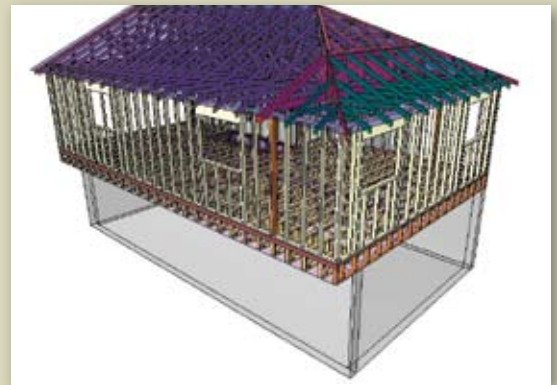
Define and edit trusses in 3d model, shift a jack truss and see resulting hanger change on girder. When any changes are made, all material lists, outputs and labeling in layout are up to date.

MAKE YOUR PLANT MORE EFFICIENT

Fully integrated toolset from Layout and design to the best production management software available in MiTek's MBA and MVP programs.



Integrate dimensional Lumber framing in roofs and floors including beams, joists, rim and blocking. Automatically frames around openings.



Gravity and wind loads are distributed throughout the entire structure within the model ensuring the most accurate and competitive designs available that work, and work well together.

MiTek's TrussFramer Whole House Software brings you efficiency and accuracy like never before. Because now, more than ever, your success is our success.

MITEK VALUE
DELIVERS RESULTS.

SOFTWARE
EQUIPMENT
CONNECTOR & BRACING PRODUCTS
ENGINEERING SERVICES



ON THE FENCE...

ABOUT JOINING THE RANKS?



Cascade Mfg Co
www.cascade-mfg-co.com
Cascade, IA

Tri-County Truss, Inc.
www.tricountytruss.com
Burlington, WA

Lumber Specialties
www.lbrspec.com
Dyersville, IA

ProBuild Manufacturing
www.probuild.com
Big Lake, AK Indianapolis, IN
Dry Ridge, KY De Pere, WI

True House, Inc.
www.truehouse.com
Jacksonville, FL

Truss Craft
www.dakotacraft.com
Cheyenne, WY

Dakota Craft Truss
www.dakotacraft.com
Rapid City, SD

Shelter Systems Limited
www.sheltersystems.com
Westminster, MD

Truss Systems, Inc.
www.trussystemsinc.com
Oxford, GA

Plum Building Systems, LLC
www.plumbuildingsystemsinc.com
West Des Moines, IA

Sun State Components of Nevada, Inc.
www.sunstatenv.com
North Las Vegas, NV

Consider this: SCORE can reduce your SBCA membership dues to

\$ ZERO!



Learn more at
www.sbcindustry.com/scorepackages.php

For reader service, go to www.sbcmag.info/sbca.htm

Page 16

SBCRI Reveals Data from Wall Bracing Tests

by SBC Staff



Page 24

SBCATM **Membership Directory** An annual listing of members of the Structural Building Components Association.

Columns

Editor's Message • You Gotta Have Faith!	7
Technical Q&A • Sealed Truss Placement Diagrams Revisited	10
Safety Scene • Depression in the Workplace	12
BCMC: Your Business Lifeline • Tire Kickers or Decision Makers?	14

Departments

Chapter Corner	38
Classified Ads	40
Advertiser Index	40
Parting Shots	42

Tools for Your Trade

These companies provide significant sponsorship of the structural building components industry.

Gold Advertisers

BCMC*
Clark Industries*
Eagle Metal Products*
Eide
ITW Building Components Group Inc.*
Lakeside Trailer Manufacturing*
MiTek Industries, Inc.*
Monet DeSaw*
Panels Plus*
Qualtim, Inc.*
SBCA*
Simpson Strong-Tie Co.*
Southern Pine Council*
Viking – Wall Panel Systems*
Wood Truss Systems, Inc.*

For more information about our 2009 Program Advertisers or advertising in general, visit the SBC website at www.sbcmag.info or call 608/310-6706.



Silver Advertisers

A-NU-Prospect*
Finnforest USA*
Hundegger USA LC*
Pennsylvania Lumbermens Mutual Insurance Co.

Bronze Advertisers

Enventek, LLC
Hoover Treated Wood Products, Inc.
Precision Equipment Manufacturing
Stiles Machinery, Inc.
Wasserman & Associates, Inc.

Many thanks for their ongoing support!

STRUCTURAL BUILDING
COMPONENTS
THE FUTURE OF FRAMING

*Indicates Charter Advertiser Status
Listing based on contracts
received as of 3/16/09.



Editor's Message

You Gotta Have Faith!

by Ben Hershey

**“When things get tough,
always remember...faith doesn't
get you around trouble,
it gets you through it!”**

I am not sure where I saw that quote sometime in the last two months, but I wrote it down and have kept it on the visor of my truck as a reminder every day. As I write this, the newest stimulus package has passed through Congress, and I am thankful to those of you who joined myself, Rick Parrino's Legislative Committee and the National Association of Home Builders to write our Congressional Representatives in support of the housing piece of this legislation. Today, President Obama was in Phoenix and touted his bailout of mortgages; it seems to me that the Obama Administration needs to address how to get banks lending again. Certainly we live in unprecedented times that even those who founded this industry said they have never seen. A lot of government money is being thrown around, and I am sure we are all hopeful that some of it starts flowing back into construction.

When things get tough, always remember...faith doesn't get you around trouble, it gets you through it!

This issue is framed around Research & Testing and its profound effects on our industry. Go back in time and reflect on the things that have been developed in our industry and changed the products we manufacture, how we manufacture them, how we deliver them, and how we market them. Quite a few come to mind very quickly for me, including the automation of various production equipment and the use of wall panels. This past month (February), the Structural Building Components Research Institute (which is wholly owned by SBCA) received its ACLASS certification from the ANSI-ASQ National Accreditation Board (see page 9 for more details). SBCRI is one of the few facilities that tests structural assemblies as they are actually built and installed properly in the field. SBCRI offers an extensive list of testing options for accurate and, if necessary, confidential, full-scale testing and analysis of a wide variety of construction products in an in situ environment. Since its grand opening in June 2007, SBCRI has been working hard on tests that increase our understanding of the behavior of building components within our testing joint venture program with the Truss Plate Institute (TPI).

Our industry continues to evolve based on the ideas that come from our customers, vendors and from our component manufacturing peers. We need to continue to find faster and safer ways to install our products in the field, and we also need to research new ways of using our products both from a structural engineering as well as a cost-efficient use of materials standpoint. This comes from continued research of how our products perform in “real-world” applications, not just looking at a piece of paper that says the truss will work. If you remember the Balloon Frame Wall Systems article in the January/February issue, that idea was born from one of our industry entrepreneurs. With additional research and testing that may be one of the next waves of products we manufacture.

Our new state of the art research facility in Madison, WI affords us the opportunity to work with our partner, TPI, and others to push the boundaries of what we know and how we use our products. If you have not had the chance to see the facility, I encourage you to take a trip and see what our industry has developed. Even in hard times like we are experiencing now, there are people in our industry who are using

Continued on page 8

at a glance

- ❑ Finding faster, safer ways to install our products and discovering new applications is a benefit of component testing.
- ❑ SBCRI in Madison, WI affords us the opportunity to work with TPI and others to push the boundaries of component knowledge.
- ❑ Everyone is welcome to visit SBCRI and see what our industry has developed!

Editor's Message

Continued from page 7

this facility or their own workshop to find that next unique product niche for their company.

I have a fairly large collection of CDs and recently went to the electronics store to buy a multi-CD player. Imagine my surprise when the sales representative looked at me with a question mark on his face; you would have thought I was looking for an 8-track player. R&D has advanced and I need to start using the technology that powers our music today. Think of how some of you use MP3 players or iPods now; it all started with one man back in the 1800s, Thomas Edison. Edison once said, "Genius is one percent inspiration and ninety-nine percent perspiration." It is that 99 percent perspiration that we see in the products, ideas and methodologies that are brought to market.

Finally, I will start putting that "bug in your ear" about the upcoming 2009 BCMC show in Phoenix, AZ. You hear it many times, but BCMC is the one place where our industry can come together, learn from each other and plan for our future. And now more than any other time, you need to make this a priority for your business. The exhibitors and the BCMC Committee are doing a wonderful job of putting together a great lineup of educational sessions and a dynamic show floor with our exhibitors. The companies that take advantage of the value of BCMC will be well positioned to align themselves with these opportunities. Make plans now to attend; I am sure that Phoenix will provide you with some great weather (it is a dry heat ☺). Have a great month! **SBC**

SBC encourages the participation of its readers in developing content for future issues. Do you have an article idea for a future issue or a topic that you would like to see covered? Email your thoughts and ideas to editor@sbcmag.info.

New SBCA Members

ASSOCIATE MEMBER

Masengill Machinery Company

PO Box 1520

Morristown, TN 37816

888/873-9663

Mr. Wayne Masengill

Listing as of 3/16/09.



For details about SBCA membership, contact Anna (608/310-6719 or astamm@qualltim.com) or visit www.sbcindustry.com.

STRUCTURAL BUILDING COMPONENTS™

THE FUTURE OF FRAMING

Publisher

Truss Publications, Inc.
6300 Enterprise Lane • Suite 200 • Madison, WI 53719
Phone: 608/310-6706 • Fax: 608/271-7006
trusspubs@sbcmag.info • www.sbcmag.info

Editor

Ben Hershey
Alliance TruTrus, LLC • bhershey@sbcmag.info

Art Director

Melinda Caldwell
608/310-6729 • mcaldwell@sbcmag.info

Managing Editor & Circulation Director

Libby Maurer
608/310-6724 • Imaurer@sbcmag.info

Editorial Assistant & Staff Writer

Emmy Thorson-Hanson
608/310-6702 • ethorson-hanson@sbcmag.info

Editorial Review

Suzi Grundahl
608/310-6710 • sgrundahl@sbcmag.info

Advertising Sales & Marketing

Peggy Pichette
608/310-6723 • ppichette@sbcmag.info

Jan Pauli

608/310-6746 • jpauli@sbcmag.info

Kirk Grundahl

608/274-2345 • kgrundahl@sbcmag.info

Staff Writers for April

Molly E. Butz • Sean D. Shields
Anna L. Stamm • Larry Wainright

Accountant

Mike Younglove
608/310-6714 • myounglove@sbcmag.info

Computer Systems Administrator

Rick Saindon
608/310-6717 • rsaindon@sbcmag.info

Send all ad materials, insertion orders, contracts & payments to:

Truss Publications, Inc.
6300 Enterprise Lane • Suite 200
Madison, WI 53719
Phone: 608/310-6706 • Fax: 608/271-7006
trusspubs@sbcmag.info • www.sbcmag.info

The mission of *Structural Building Components Magazine (SBC)* is to increase the knowledge of and to promote the common interests of those engaged in manufacturing and distributing structural building components. Further, *SBC* strives to ensure growth, continuity and increased professionalism in our industry, and to be the information conduit by staying abreast of leading-edge issues. *SBC's* editorial focus is geared toward the entire structural building component industry, which includes the membership of the Structural Building Components Association (SBCA). The opinions expressed in *SBC* are those of the authors and those quoted, and are not necessarily the opinions of Truss Publications or SBCA.

Copyright ©2009 by Truss Publications, Inc. All rights reserved.



SBCA Board of Directors

Officers & Executive Committee Reps.

- **President: Ben Hershey** • Alliance TruTrus, LLC
602/252-1772 • bhershey@trustrus.com
- **President Elect/Treasurer: Steven Spradlin** • Capital Structures Inc.
479/725-2112 • sspradlin@capstructures.com
- **Secretary: Joseph D. Hikel** • Shelter Systems Limited
410/876-3900 • joeh@sheltersystems.com
- **Past President: Robert J. Becht** • Chambers Truss, Inc.
772/465-2012 • bob@chamberstruss.com
- **Kenneth M. Clloyd** • California Truss Co.
951/657-7491 • kenc@caltruss.com
- **Dwight Hikel** • Shelter Systems Limited
410/876-3900 • dwight@sheltersystems.com
- **Frank B. Klinger** • South Texas Truss Co. LLC
956/982-0744 • lftcfbk@aol.com
- **Joe Odgers** • Builders FirstSource/Bama Truss & Components, Inc.
205/669-4188 • joe.odgers@bldr.com

At-Large Representatives

- **Dean DeHoog** • ProBuild North • 616/677-3743
- **Allen Erickson** • Cal-Asia Truss • 925/680-7701
- **Greg Griggs** • Stock Building Supply • 919/431-1000
- **David Horne** • Universal Forest Products, Inc. • 336/226-9356

Directors Representing Chapters

- **Phil Adams** • Northwest Building Components, Inc. • 208/687-9490
- **Keith Azlin** • U.S. Components, LLC • 520/882-3709
- **Clyde R. Bartlett** • Bluegrass Truss Company • 859/255-2481
- **Jimmy Broach, P.E.** • Atlantic Building Components & Services, Inc., • 843/565-3999
- **Rick Cashman** • Florida Forest Products • 727/585-2067
- **Mark A. Casp** • ProBuild East • 352/343-0680
- **David A. Denoncourt** • Beau-Trusses • 603/796-6200
- **Jack Dermer** • American Truss Systems, Inc. • 281/442-4584
- **James C. Finkenhoefer** • Truss Systems, Inc. • 770/787-8715
- **John Hogan** • Vivco Components • 816/449-2161
- **Lee Howe** • ProBuild West • 503/357-2178
- **Steven M. Johnson** • Nelson Truss, Inc. • 608/884-6141
- **Michael Karceski** • Atlas Components, Inc. • 815/332-4904
- **Taft Ketchum** • PDJ Components, Inc. • 845/469-9191
- **Chris Lambert** • Southeastern Materials, Inc. • 704/983-1144
- **Jesse Lohse** • Rocky Mountain Truss Co. • 406/777-0210
- **Glenn McClendon** • Sun State Components of Nevada, Inc. • 702/657-1889
- **David Motter, P.E.** • Oso Lumber and Hardware, Truss Division • 360/925-4155
- **Richard P. Parrino** • Plum Building Systems, LLC • 515/327-0698
- **Gary Sartor** • Stone Truss Company, Inc. • 760/967-6171
- **Steven L. Stroder** • ProBuild North • 317/834-5380
- **Scott Ward** • Southern Components, Inc. • 318/687-3330
- **Stephen Yoder** • Stark Truss Co., Inc. • 330/478-2100

Associate Member Directors

- **Steve Cabler, P.E.** • MiTek Industries, Inc. • 314/434-1200
- **Steve Harms** • iLevel by Weyerhaeuser • 253/924-2700
- **Keith Lindemulder** • Nuconsteel Corporation • 940/383-0593
- **Stanley K. Sias** • Simpson Strong-Tie. Co. • 925/560-9000
- **Chad Ward** • Temple-Inland Forest Products • 936/829-5511

SBCRI Receives ACLASS Accreditation

The Structural Building Components Research Institute (SBCRI), wholly owned by SBCA, received its ACLASS accreditation certificate on February 6. ACLASS, an ANSI-ASQ National Accreditation Board company, is an international accreditation body based in Washington, DC.

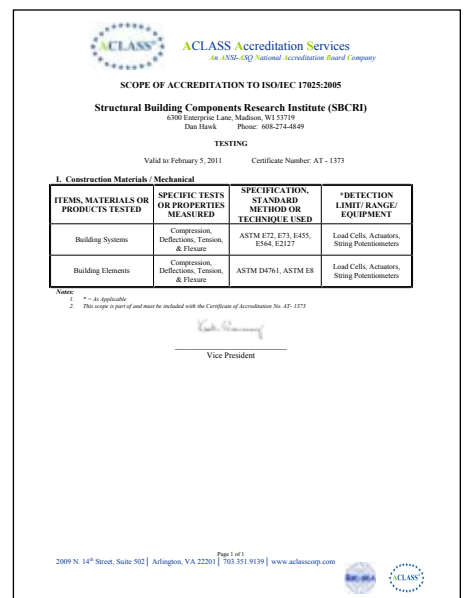
SBCRI is a state-of-the-art testing and research facility in Madison, WI, that is one of the few facilities that tests structural assemblies as they are actually built and installed in the field. SBCRI offers an extensive list of testing options for accurate and confidential full-scale testing and analysis of a wide variety of construction products in an in situ environment. SBCRI specializes in product development, forensic and industry fundamentals testing.

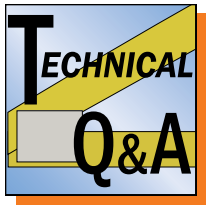
The type of ACLASS certification SBCRI has received is ISO/IEC 17025 accreditation, which is a very rigorous standard for general requirements for the competence of testing and calibration laboratories. In order to comply, SBCRI had to develop and implement a quality manual and related quality policies for the structural testing it is undertaking. In December 2008, an assessor from ACLASS spent two days in SBCRI evaluating its structural testing quality assurance processes.

“The scope of our certification is very broad, which is unique for a testing lab,” said Kirk Grundahl, SBCA Executive Director. “SBCRI is ACLASS certified for gravity, uplift, lateral and cyclical loading techniques where we are able to use the traditional ASTM standards for individual component testing and as a guideline for creating testing procedures for full scale assembly testing. The certification allows us the flexibility to define testing techniques for each type of testing set-up: component segment, single structural elements, and in situ element assemblies with associated connections.”

The ACLASS certifier was very impressed with SBCRI’s quality control process, which is centered on measuring the applied loads from the actuators, watching the load as it moves through the assembly and then measuring all the reaction loads at the foundation. “That’s a very powerful testing technique; by definition, loads in must equal loads out, so you find out instantly if the test results are accurate,” Grundahl said.

Visit www.sbcricri.info to view the ACLASS certificate or the SBCRI Talking Brochure™. **SBC**





Technical Q & A

Sealed Truss Placement Diagrams Revisited

by Larry Wainright

One of the most recurrent technical questions in the industry is explained.

Beginning with the May 2001 *SBC Magazine*, the issue of sealing a truss placement diagram (TPD) has been the topic of numerous articles. Searching on the words “truss placement” at www.sbcmag.info, you find over a dozen articles including features in June 2002, April 2007 and August 2007. Additionally, over half of the *SBC Tech Notes* (www.sbcindustry.com/technotes.php) written to clarify code issues and help educate the marketplace on structural building component topics are dedicated to “Seals and Truss Placement Diagrams.” Yet despite all the information available, we still receive numerous questions as to why a TPD should not be sealed.

Question

I have submitted my construction documents along with the truss design drawings and the truss placement diagram to my local building official with my application for a building permit for a single family residence. The building official wants an engineer's seal on the TPD. The truss manufacturer told me that this is not a good idea. Can the truss placement diagram be sealed and if not, why?

Answer

The answer to this question depends on a number of circumstances such as professional engineering laws in the state, the building code in force, any local statutes that may be enforced, or the presence of a registered design professional (RDP) on the project.

The majority of residential structures in the United States are built using the prescriptive code of the *2006 International Residential Code (IRC)*. Trusses are simply replacements for the prescriptively applied joists and rafters, and are highly engineered structural elements.

When the building designer involved with a residential project is a RDP, he must evaluate the structural components (e.g., rafters, joists, I-joists, and trusses) to ensure their adequacy for the project. The placement of trusses is just one of the elements the RDP must consider. Whether or not required by the statutes of the jurisdiction where the project is located, the RDP may effectively delegate the design of the trusses to a truss design engineer. The RDP will then review and approve all engineering performed by the truss design engineer.

In preparing the construction documents, the building designer needs to provide the truss design engineer with the information necessary to properly design the trusses for the building. According to *ANSI/TPI 1-2002 Chapter 2*, which is adopted by reference in *2006 IRC*, the following information must be provided:

ANSI/TPI 1-2002 Chapter 2

2.5.2 The Building Designer...shall provide the following:

2.5.2.1 All Structural Element and Truss orientations and locations;

2.5.2.2 Information to fully determine all Truss profiles;

2.5.2.3 All Structural Element and Truss bearing conditions;

2.5.2.4 The location, direction, and magnitude of all dead and live loads applicable to each Structural Element and Truss...

2.5.2.5 All Structural Element and Truss anchorage designs required to resist uplift, gravity, and lateral loads;

at a glance

- Truss placement diagrams (TPD) are intended to assist in positioning trusses and related components supplied by the component manufacturer.
- On residential projects, the truss design engineer is responsible for the single truss design depicted on each truss design drawing.
- Since the TPD is not typically prepared under the truss designer engineer's supervision, it is not considered an engineered document.
- It is not legal in most states for a truss design engineer to seal a non-registered person's work for which he has no direct supervision.

- 2.5.2.6 Allowable vertical and horizontal deflection criteria and any specific criteria...
- 2.5.2.7 Proper transfer of design loads affecting the Structural Elements and Trusses;
- 2.5.2.8 Adequate connections between Trusses and between Structural Elements...but not Truss to Truss girder connections...
- 2.5.2.9 Permanent bracing design for the Building...and permanent bracing for all Structural Elements and Trusses...

2.5.3 The Building Designer shall be responsible for the adequacy of the design of the Building Structural System [and]...shall evaluate the effect of the Trusses and the Structural Elements supplied, on the Building Structural System.

Assuming the requisite information is provided within the construction documents issued by the RDP or building designer, the truss design engineer's sole responsibility is to properly design the individual trusses according to this information. Once designed, a truss is then depicted on a truss design drawing. The truss design engineer is therefore specifically responsible for the single truss design depicted on each truss design drawing.

Conversely, the TPD is prepared by component manufacturer personnel. These individuals are not typically truss design engineers; they can be the truss manufacturer's salespeople, truss technicians or truss take-off specialists. Although these people are usually highly trained and skilled in their work, they are generally non-engineers. Because the TPD is typically prepared outside the truss designer engineer's scope of work, these diagrams may not be reviewed or even seen by the truss design engineer and are therefore not prepared under the truss design engineer's direct supervision.

Because a TPD is generally neither created by nor created under the immediate personal supervision of a licensed design professional, they cannot be sealed. For a truss design engineer to seal a non-registered person's work for which he has no direct supervision violates engineering law in most states.

TPDs are intended to assist customers, erectors and code enforcement officials in positioning or locating the trusses and related structural components supplied by the component manufacturer. Their function is to serve as detailed installation instructions. They indicate the component manufacturer's assumed location for each truss or related component that has been designed and manufactured according to the information on the construction documents. From this perspective, a truss or related structural building component is no different than a window that is manufactured and in turn installed within a building. A window may be a highly engineered component of a house with specific installation specifications and instructions; however, there is no requirement to provide an engineer's seal on the installation instructions for windows.

While the IRC remains relatively silent on the issue, the IBC has recognized the confusion and the 2006 IBC has been revised to

Master Plank®
BEAMS & HEADERS
STRONG • LIGHTWEIGHT • STABLE

Finnforest USA products out-performs solid sawn lumber and offers:

- High strength to depth ratios
- Multiple span capabilities
- Building Code approvals and OSHA compliance

AN EXCELLENT VALUE

- **MASTER-Q LVL®**
- **MASTER-STAIR®**
- **MASTER-J®**
- **MASTER-Ply®**
- **KRB GLULAM®**

Building a tradition of quality products

- LVL Attractive Beams & Headers
- LVL Structural Stair Stringer Blanks
- LVL Specialty Plywood
- LVL Truss Chords (Alpine™ & MiTek® plate values)
- LVL 3-1/2" One-Piece Garage Door Headers
- LVL Scaffold Plank & Other Industrial Applications

*We produce thousands of products from wood...
The only limit is your imagination.*

finnforest **Finnforest USA**
Engineered Wood Division

www.finnforestus.com • 800/622-5850 • Fax: 586/296-8773

For reader service, go to [www.sbcmag.info/finnforest .htm](http://www.sbcmag.info/finnforest.htm)

include this language regarding truss placement diagrams:

2303.4.1.3 Truss placement diagram. The truss manufacturer shall provide a truss placement diagram that identifies the proposed location for each individually designated truss and references the corresponding truss design drawing. The truss placement diagram shall be provided as part of the truss submittal package, and with the shipment of trusses delivered to the job site. Truss placement diagrams shall not be required to bear the seal or signature of the truss designer.

Exception: When the truss placement diagram is prepared under the direct supervision of a registered design professional, it is required to be signed and sealed.

Since the TPD is not normally prepared under the supervision of the RDP, they are not required to be sealed. It should also be noted that this exception was removed from the 2009 IBC to further clarify that the TPD is not an engineered document and therefore should not require an engineer's seal. **SBC**

For further information:

- www.sbcindustry.com/technotes.php
- www.sbcindustry.com/ttbplacewww.sbcmag.info/Archive/2007/aug/0708_sealingtpd.pdf
- www.sbcmag.info/Archive/2007/apr/0704_hill.pdf
- www.sbcmag.info/Archive/2002/jun/0206%20No%20Sealed.pdf
- www.sbcmag.info/Archive/2001/may/0105%20FAQ.pdf



Safety Scene

Depression in the Workplace

by Molly E. Butz

Tips for spotting and dealing with depression in the workplace.

Although it's a topic that's often avoided in the workplace, depression affects nearly ten percent of the U.S. population age 18 and older every year. When left untreated, depression can touch any and all areas of a person's life, including their performance and safety at work. Decreased productivity, low morale, absenteeism and accidents are just a few of the ways depression can affect a person in the workplace.

The stigma attached to depressive illnesses oftentimes makes workers hesitant to track down the support they need and even less likely to broach the subject at work. However, with appropriate treatment, many people can realize relief from the symptoms of depression and consequently the symptoms' effects on daily tasks. Creating a workplace that proactively deals with depression can positively impact your employees and, you may discover, your bottom line.

What Is Depression?

According to the National Institute of Mental Health (NIMH), depression is "a serious medical illness" characterized by "feeling 'down' and 'low' and 'hopeless' for weeks at a time." And, although anyone can feel "sad" or "down" from time to time, depression is a much more serious and long-lasting concern.

Additionally, many things can contribute to depression. The National Mental Health Association (MNHA) suggests that depression can be caused by one or more of the following: biology, gender, medications, genetics, environment, difficult life events (e.g., divorce, financial problems or the death of a loved one).

Some people suffer from short-term or situational depression, which can be treated with counseling and/or medication for a limited period of time. Others, whose depression is genetic or biological, may need a long-term treatment plan.

In the Workplace

There are numerous symptoms associated with depression, from persistent feelings of sadness, anxiety and worthlessness to fatigue, difficulty concentrating and insomnia. At work, these symptoms can affect productivity, attitude and even increase the chances that an employee will be involved in an accident. Depression can also lead to absenteeism, lost workdays and increased health care claims. Read on for proactive strategies for dealing depression in the workplace.

Educate your employees about depression. Teaching your employees to recognize the signs and symptoms of depression can help them spot the illness in their co-workers and themselves. You can begin with a simple list of symptoms (download "Depression: Signs & Symptoms" from **SupportDocs** at www.sbcmag.info) and a toolbox talk. If you don't feel comfortable presenting the information yourself or are looking for something more in-depth, consider securing a handful of brochures from a local mental health professional and book an appointment for him/her to come and talk with your staff.

Provide a positive, healthy working environment. Small improvements can transform a work environment into a happy, healthy place. Think about adding live plants to common employee areas such as the cafeteria or locker room. Their color and

at a glance

- Symptoms of depression include persistent feelings of sadness, anxiety and worthlessness to fatigue, difficulty concentrating and insomnia.
- Depression can result in absenteeism, lost workdays or increased health care claims.
- Depression is a delicate but serious subject, and many people fear they will be judged for admitting their condition.

fresh oxygen will help stimulate the environment. And, speaking of the cafeteria, making healthy food choices available can help everyone feel better, so if you offer food in any capacity (even a vending machine) lock-in some nutritious options if possible.

Make mental health services readily available. Providing information about and access to good mental health services can be as simple as posting a list of providers in your lunch room. If you don't already, you may also want to consider offering an employee assistance program (EAP). EAPs often include voluntary mental health assessments, short-term counseling and referral services for employees looking for longer-term help.

Be supportive. If you are concerned that one or more of your employees is dealing with depression, approach it cautiously and focus on the business side of the situation. (Under no circumstances should you attempt to diagnose an employee or co-worker, leave that to a trained mental health professional.) The Society for Human Resource Management suggests that you start by saying something simple like: "I'm concerned that you've been late to work often and aren't meeting your performance objectives. I'd like to see you get back on track." This will open a line of communication without intruding on an employee's personal life.

Above all, remember that depression is a delicate (but serious) subject and although there is absolutely no reason to feel ashamed about having a depressive illness, many people fear they will be judged. Being gentle and sensitive are important, and confidentiality is key. Plus, healthy, happy employees means productive, safe employees, too! And you know what we have to say about that: Safety first! **SBC**

For information about Seasonal Affective Disorder, a specific type of depressive illness, go to **SupportDocs** at www.sbcmag.info.

Wall Panel Opportunities Come In Many Sizes.

Whatever your opportunity, we can custom-build the equipment that will help you meet it. Whether it's a 16' sheathing station or a 70' squaring table like the one we recently shipped to a Canadian plant. Custom equipment to fit your circumstance provides manufacturing efficiencies to make your products competitive. In tight markets where you need to look at everything, the answers will be in the small details that add up to controlling your costs.

Any of these machines can be built to provide the custom details that fit your plant:



- **Wall Framers**
 - Telescoping arms for variable wall height
 - No "step over" mechanisms to trip workers
 - Pop up skate conveyors for easy wall transfer



- **Combination Table - frame, squaring & sheath in one table**
 - Telescoping arms for variable wall height
 - 2x4 or 2x6 wall capability
 - Manual or optional powered tool bridge drive



- **Single or Dual Tool Beam Sheathing Bridges**
 - 2x4 or 2x6 capability
 - Staple or nail options, optional edge stitcher
 - Manual or optional powered tool bridge drive



- **New - Component Nailer**
 - Touch screen with picture menu of component
 - Single foot pedal operation
 - Coiled nails or stick options

Squaring Table
Produces 70' of wall.
You need to see this to believe it!
(Table not shown actual size.)



PANELS PLUS
Wall Framing Made Simple

For Information
866.726.7587 or www.panplus.com

For reader service, go to www.sbcmag.info/panelsplus.htm

Serving the Truss Industry Since 1987

New & Used Models in Stock

For over 20 years, Lakeside Trailer has led the way in the component trailer industry with innovative ideas to assure your delivery operations remain efficient in today's competitive market. With more than 1700 truss trailers to our credit, Lakeside has perfected ways to reduce or eliminate your transportation concerns.

LAKESIDE
TRAILER MANUFACTURING, INC.

573/736-2966 • 573/736-5515 fax
www.rollerbed.com • lee@rollerbed.com

For reader service, go to www.sbcmag.info/lakeside.htm.

Auctions!

Wasserman & Associates is proud to introduce our new **Auction Assistance Program**. This is a hassle free program. With this program we'll turnkey the process for you. After winning the bid, we'll go to the auction site, disassemble the equipment, arrange for shipping, load the truck and reinstall the equipment at your facility. All this for one price. It's that simple! Give us a call today and we'll inform you of upcoming auctions.

Stop the Madness!

Sellers, why waste 13%-16% of your money on a buyer's premium at an auction, and not get fair market value? Let us list your equipment on our website free of charge. Give us a call today and we'll evaluate your equipment, list it and get you the best return the market allows. Your return will far exceed that of an auction.

WASSERMAN & ASSOCIATES, INC.

800/382-0329 phone • 402/438-2524 fax
sales@wasserman-associates.com

For reader service, go to www.sbcmag.info/wasserman.htm.



BCMC: Your Business Lifeline

Tire Kickers or Decision Makers?

by Carl Schoening

An exhibitor's case for the value of each group at BCMC.

Last month I talked about preparing for BCMC and product development. That is keenly important for any tradeshow, but even more so for BCMC. BCMC is what every trade show would want to be. I know, I know; a lot of shows are much bigger. They have more glitz and glamour. Many shows try to draw in attendees ranging from the actual target audience to passersby on the street. The value becomes diluted and the exhibitors have to do a lot more work at the booth. Exhibitors have to qualify every visitor that enters the booth. They ask internal questions about the visitor. Is this person serious about my product or are they just killing time until the cocktail hour? Are they buyers or are they actually a competitor trying gain useful information about my new product? Tradeshows are hectic for every exhibitor and having additional non-essential concerns makes the job that much harder. **BCMC is different.**

Title	2008	2007	2006	2005	2004	2003	2002	2001
President/ CEO/Owner	27%	24%	22%	21%	35%	26%	20%	31%
Senior Level/ Vice Pres.	25%	24%	24%	26%	25%	28%	32%	16%
Manager/ Supervisor	28%	33%	34%	37%	12%	32%	27%	42%
Tech/Mfg/ Admin Staff	20%	19%	20%	16%	28%	14%	21%	11%
Total	100%	100%	100%	100%	100%	100%	100%	100%

Figure 1. BCMC component manufacturer attendance 2001-2008 by title.

BCMC attendees are there for simple yet serious reasons. They are there to learn about what is available to make them better and to build relationships with exhibitors and other attendees. BCMC has always focused on bringing serious component manufacturers into a casual setting where they can attend seminars and see, touch and feel the latest products available from exhibitors.

Seminars? I am an exhibitor. What do I care about seminars? Take a look at the breakout session topics. Component manufacturers are going to learn about production, management and how to survive the current economic conditions.

As an exhibitor, I try to build my presentation of new products around the central topic of the seminars. "Oh, you just attended the productivity breakout?" Let me show you our latest product that will improve your productivity and reduce costs. See how that works? And, the best part of it is that I know I am speaking to someone that can either make buying decisions or is a key influencer in the decision.

The title says "Tire Kickers or Decision Makers." I bet you thought I would downplay the tire kickers and focus on decision makers. Well, I want both. At BCMC you will be surprised to learn that the "tire kickers" are in most cases the key influencers. With only a few days to view the show floor, many companies send a couple of people. Generally, one of them is the last word on purchasing the product and the others will be there to view BCMC through the eyes of an expert in their field. Sometime during the show, the second group will impart what they have learned to the decision makers and bring them back to the booth to see for themselves. Do not discount BCMC tire kickers. They are the tech or production staff that are charged with finding the next big thing that will help the company be more productive, reduce costs or make more money.

That chart above is really important. Take a close look at it. While other tradeshows become a company reward during a good year to give employees a chance to get away, have some fun and maybe walk the show floor, BCMC has continued to attract the right people. The economy has forced companies to cut back on travel and non-essential spending. BCMC is still an event that draws attendees from the highest level of companies across the country. Yes, attendance has been down a bit in 2007 and 2008

at a glance

- History shows that decision makers continue to attend BCMC; the opportunity to launch a new product or capture more market share is as strong as ever.
- BCMC 2009, as always, will bring in attendees that can make the call and make a difference.
- Decision makers and key influencers are precisely the people exhibitors want to target.

after several great years of growth, but the quality of attendees has remained consistent and is as high as ever. You will not see less than serious attendees walking the show floor. If they are there, an opportunity exists. As we have seen through the years, the decision makers continue to attend BCMC and the opportunity to grow sales, launch a new product or capture more market share is as strong as ever.

Of course it may take a bit more creativity to get them into your booth. If you want attendees in your booth you may have to do things others can't or won't. My first year as an exhibitor at BCMC was awesome! My company had a brand new product. I had to prove it was better and stronger than competitive products; but how? I installed the product and as attendees started visiting the booth they would be shown the new product and walk away not nearly as excited as me. The next time I explained the strength of the product I surprised everyone (including my boss) by doing chin ups on it. People started crowding around to see what craziness was going on. Soon people were coming by just to see if I would do it again. It got the attendees into the booth. We had a very successful product launch and it was fun. The point is, it is up to you to draw the decision makers and key influencers into your booth and get them excited about the products you offer.

BCMC, as always, will bring in attendees that can make the call and make a difference. Last year we had a great show. Our booth was filled with enthusiasm and ideas. We got people excited. The people we got excited were all the right ones; decision makers and key influencers. BCMC provided us with great actionable leads and the chance to tell our story. I look forward to seeing you at the show. Come tell your story—people will be listening! **SBC**

2009 BCMC booth rates have not increased from 2008 rates! Contact Jan Pauli (jpauli@qualtim.com) for a copy of the exhibitor promo or visit www.bcmcshow.com for more details.

Wood Truss Systems inc.
MANUFACTURERS' REPRESENTATIVES

Truss and wood component machinery experts for over 30 years. We can help you enter the component industry or refine your existing facility with custom equipment solutions featuring:

New & Used

- ▲ Truss Production Equipment
- ▲ Wall Panel Framing Equipment
- ▲ Automatic & Manual Cutting Equipment: Component, Radial Arm, Linear Single Blade Saws
- ▲ Plant Layouts / Production Consultants
- ▲ Automated Jigging Systems
- ▲ Automated Mesuring Devices
- ▲ Replacement Production Surfaces

Count on effective, economical and timely solutions.

www.WoodTrussSystems.com

888.288.WTSI (9874)

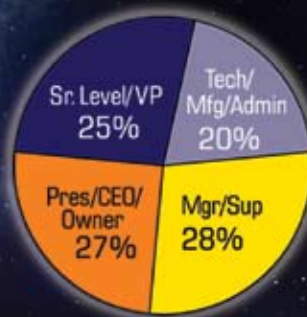


For reader service, go to www.sbcmag.info/wts.htm.

BCMC 2009 • September 30 - October 2

SOAR TO NEW HEIGHTS

BCMC Delivers Quality Attendees



Register online today at www.bcmcshow.com

To save money on booth space, submit your Exhibit Space Application & Contract with the required deposit on or before the May 1 Early Bird Discount deadline.



"We sold a machine that we weren't expecting to sell! We also got a lot of good contacts of people who are interested in us now and as soon as the market rebounds."

Michael Miller, Stiles Machinery, Inc.

Call BCMC for additional information at 608/268-1161

SBCRI Reveals Data from Wall Bracing Tests

by SBC Staff

SBCA/TPI Steering Committee Reports

1. SBCRI Industry Steering Committee Cover Letter
2. SBCRI Industry Steering Committee 2008 recap and 2009 plan
3. SBCRI 2009 Joint Industry Testing Program
4. Report - Lateral Walls SBCRI-08-0112
5. Report - Tension Perpendicular to the Grain SBCRI-08-0114 final
6. Report - Gravity Loaded Truss Performance Single vs System SBCRI-08-0113
7. Report - Certification SBCRI-08-0115
8. Report - Intellectual Property - SBCRI-08-0118
9. Report - Buckling Performance of Top Chords- SBCRI-08-0111

at a glance

- The performance of shear walls under lateral loads was recently tested in a full-scale assembly in SBCRI.
- The tests yielded results that are consistent with similar testing done by NAHB RC and APA.
- The test data calls into question prescriptive requirements of braced wall lines in the IRC.

Together with the Truss Plate Institute (TPI), SBCA has an industry testing program underway that is focused on generating fundamental information about structural building component performance. In fact, much of 2007 and all of 2008 were spent performing proprietary and industry testing in SBCRI. Throughout this time, SBCRI staff has gone through a significant growth curve that involved learning the technology in the lab and determining the best way to report new data. These efforts have resulted in the **SBCA/TPI Steering Committee Reports** listed in the sidebar below.

One of the projects, which was done in tandem with a project to develop lateral load application technology, was to collect data on the capacity of shear walls using various braced panel approaches without interior wallboard. The test results have been analyzed in the report, *Evaluation of Shear Wall Performance Under Laterally Applied Loading*, and this article details a portion of its results.

Two-Fold Goals

The first testing goal was to confirm that SBCRI's lateral load system, procedures and assembly would produce results consistent with other testing that exists in the market. In addition to SBCRI, the APA—The Engineered Wood Association¹ has performed testing on lateral loading applied to walls in a fully framed wall structure with floor or roof framing applied to the top of the walls. The NAHB Research Center has performed comparable testing of different bracing, but on a single wall using ASTM E72 test methods.² Given the APA and NAHB RC wall bracing data, the main purpose of SBCRI's testing was gather data to compare results and evaluate the performance of SBCRI testing based on the similarities and differences.

The second goal was to get an understanding of the bracing capabilities of different IRC shear wall configurations under laterally applied load conditions using in situ conditions.

One of the clear benefits of SBCRI is its large scale testing capabilities, which allows for in situ testing conditions that represent actual buildings and their resulting performance under various load conditions. This particular set-up is truly representative of a braced wall panel in a braced wall line in a typical residential structure because it consisted of a fully framed structure. Figures 1 and 2 show the wall and roof elements of the SBCRI assembly.

As shown in Figure 1, the big picture goal of this testing is to help the industry understand the flow of applied loads through wall panels, braced in a given manner, to the foundation, where the load cells placed below bottom plates of the walls account for the realistic flow of applied loads. From this engineering models can be more easily checked and calibrated, and new models can be created.

Details of the Test Set-up

The SBCRI test was conducted on a full-scale assembly measuring 30'x12'x 8' as shown in Figure 1. The two test walls measured 30' in length, and the roof was enclosed with 30' roof trusses. The roof was attached to the top plate of the walls using toe-nail connections. 7/16" OSB roof sheathing was applied to the top chord and 1/2" gypsum wall board sheathing was applied to the bottom chord.

¹ APA Report T2007-73 Full-Scale 3D Wall Bracing Tests available at www.apawood.org/level_b.cfm?content=pub_main.

² Evaluation of the Lateral Performance Of Let-In Bracing and Mixed Bracing System, EG5736_052908 available at www.foamshathing.org/images/icc/0805%20let-in%20bracing%20Test%20Report%20EG5736_052908.pdf. NAHB RC tested a single wall using the ASTM E72 standard. The testing by NAHB RC only allowed the wall to deflect in the direction of load application, and uplift was completely prevented. The exception is the NAHB RC-15 designated test which allowed uplift, but still prevented out-of-plane deflections. Such restraints appear to make the walls perform better than if they were allowed to deflect more like they would in an in-situ application. The testing performed by SBCRI and APA are closer simulations to as-built performance with SBCRI applying pure lateral loading and APA applying a lateral load that also induces a torsional component due to load only being applied to one corner of the assembly.

Figure 1. Wall Setup Layout. The blue arrows indicate load application points, red dots represent load cells, and green arrows are deflection measurement locations.

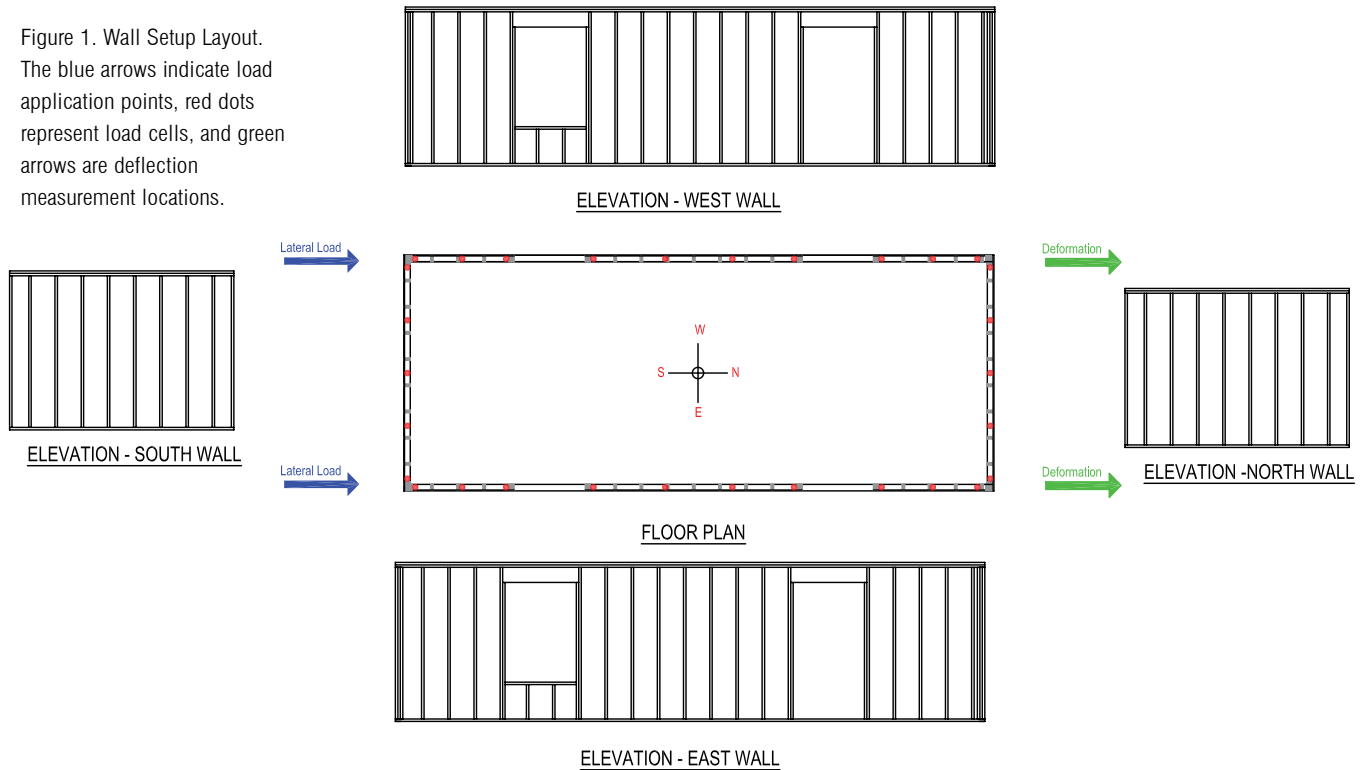
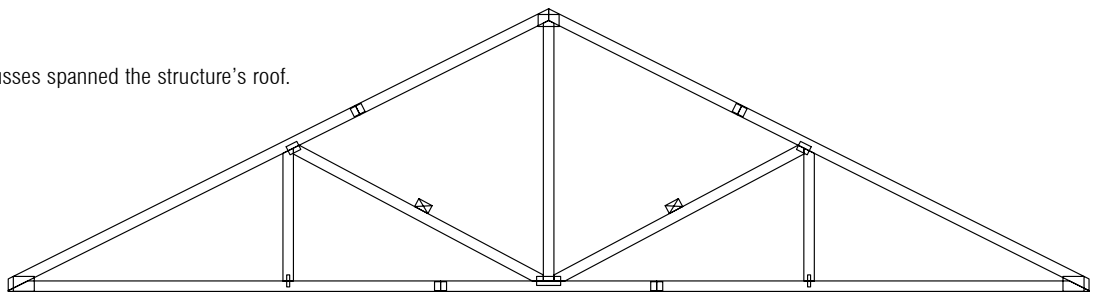



Figure 2. 30-foot roof trusses spanned the structure's roof.



Loads were applied laterally to the 30-foot walls through actuators located the south end of each of the walls. A total of 38 load cells were placed around the perimeter of the structure. Lateral deflections were measured at the top plate of the north end of each 30' wall, as well as at the mid-length of the north end wall.

The types of braced wall line methods examined are listed in Table 1 on page 18. For the tests designated SBC-1 through SBC-6 and test SBC-8, the wall was laterally loaded in 0.10-inch increments, to a total of 0.80". SBC-7 was laterally loaded in 1/8-, 1/4-, 3/8-, 1/2-, and 3/4-inch displacement increments. The solid green color indicates that a


Continued on page 18



Clark Industries, Inc.

Since 1967—Monett, Missouri

Considering equipment? Consider Clark.



- Roof & Floor Truss Presses
- Multi-Head Truss Presses
- Modular Truss Presses
- Shuttle Presses
- Jack Presses
- H.D. Chord Splicers
- Floor Truss Machines
- Electric Horizontal Stackers
- Electric Peak-up Stackers
- Post & Column Machines
- Conveyor Systems
- Custom Machinery

Call us toll free at: 800.743.9727, or visit us on the web at www.clark-ind.com

For reader service, go to www.sbcmag.info/clark.htm

Wall Number	Hold Down	Wall Diagram	Braced Panel Length
SBC-1	Yes		4 ft.
SBC-2	No		4 ft.
SBC-3	Yes		4 ft.
SBC-4	No		4 ft.
SBC-5	No		5 ft.
SBC-6	No		10 ft.
SBC-7	No		8 ft.
SBC-8 ¹	No		22.75 ft.

Table 1. SBCRI Wall Bracing Test Matrix. (¹ Test SBC-8 was conducted at a later date and had a setup slightly different than test 1-7.)

SBCRI Reveals Data from Wall Bracing Tests

Continued from page 17

4x8' OSB sheet (7/16-inch) was applied at that location on the 30' wall. SBC-5 and SBC-6 use 1x4-inch bracing at 60 degrees. Similar to the APA testing, the braces were not actually let-in, but applied to the outer edge of the wall studs. NAHB RC let-in bracing was at 45 degrees and was let-in to the studs. The walls shown in Table 1 represent the east wall of the assembly; the west wall mirrored it.

The actuator, seen in Photo 1, recorded the force necessary to displace the top plate of the wall to the predetermined displacement values. The values recorded by the actuator were attached to individual displacement values for each braced panel type and this was used to compare performance. During the tests, the load cells beneath the walls recorded the vertical force that flowed to the foundation due to the applied lateral load, as well.

Test Results

Graph 1 on page 20 provides a summary of the full data from the SBCRI testing. The x-axis of the graph is deflection imparted by the actuator, while the y-axis is the calculated pounds per square foot (PLF) value of each brace type. The length used in determining PLF is the actual length of the brace wall panel along the wall, not including areas of perforations (windows and doors).

Continued on page 20

PYRO-GUARD.

Interior Fire Retardant Treated Lumber and Plywood



EXTERIOR FIRE-X.

Exterior Fire Retardant Treated Lumber and Plywood

- Nationwide Stocking Distributors
- Superior to Paint or Coatings
- Termite and Decay Resistant
- Pressure Treated and KDAT
- Strongest FRTW Warranty
- Competitive Pricing
- Available in **RED**





The FSC logo identifies products from well-managed forests



HOOVER
TREATED WOOD PRODUCTS, INC.

Sales: 800-531-5558
Support: 800-TEC-WOOD (832-9663)
Web: www.FRTW.com
Seminars: www.learnaboutfirtw.com

For reader service, go to www.sbcmag.info/hover.htm

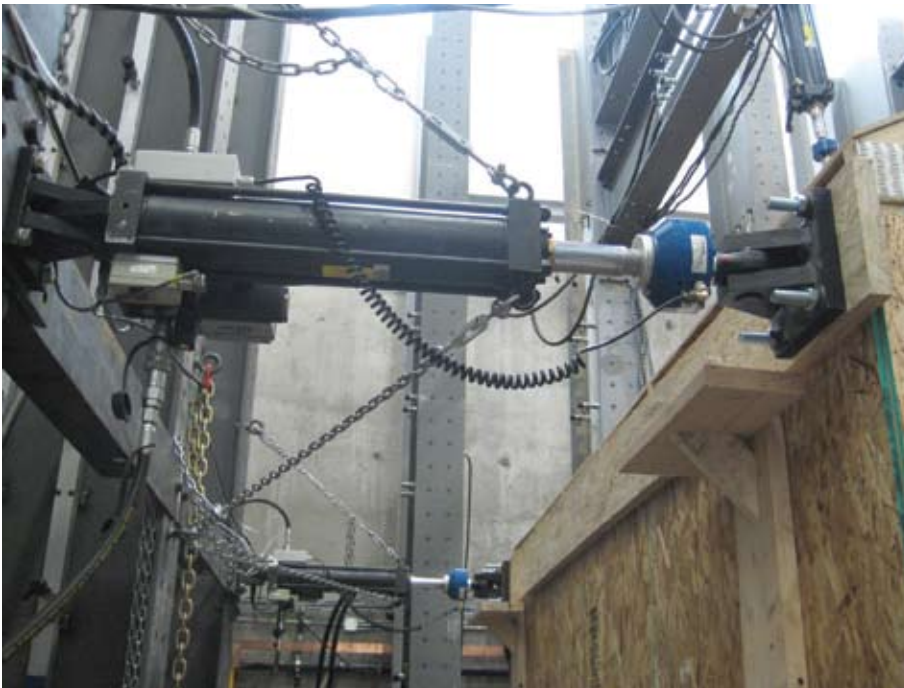


Photo 1. Load Application Device

The SBCRI results are a good representation of actual performance of a braced wall panel in a braced wall line in a typical residential structure.



True.

As a family owned, full-service plate supplier, Eagle Metal serves **independent** truss manufacturers. For more than **20 years**, we have provided component manufacturers with quality connector products, structural component software and dependable, **customer-first** support.

Partner with us today.

Connector Products • Structural Component Software • Customer-First Support

eaglemetal.com • 1-800-521-3245

For reader service, go to www.sbcmag.info/eagle.htm

sensible

When you invest in machinery you require a return on your investment. Weinmann automated production solutions from Stiles Machinery deliver on that return with the promise of a sensible investment. In today's market, automated solutions are providing panel and truss manufacturers the ability to remain competitive with the flexibility to grow as their business requires. Stiles and Weinmann offer the proven machinery design and implementation experience you expect from the leaders – a partnership that will quickly impact your bottom line and return on investment. Learn more about how to employ the promise of sensible automation.

For more information, contact Michael Miller, Director of Building Automation, at 616.698.7500 or mmiller@stilesmachinery.com or visit www.stilesmachinery.com.



stiles

Your success is our business.

CNC Linear Saws

- Five-axis machines
- 7/8" x 2" – 6 7/8" x 16 1/2" cross section
- EWP materials to 60'
- Cut, mark and layout abilities
- Route, drill and milling functions
- One operator



Robotic Material Handling

- Most efficient in the industry
- Increase machine availability and operator output
- Automatically access 5-12 full bunks of raw materials
- Vacuum technology



Wall Panel Automation

- Reduces labor 75%
- Computer controlled consistency
- Entry level through full automation
- Modular and upgradable
- Framing, nail, screw, route and stacking solutions



Stiles Software

- Manufacturing Execution System (MES)
- AVIA Projection System
- Custom Applications

stiles software

For reader service, go to www.sbcmag.info/

Line Color Key for Graphs 1 and 2:

- Orange** = sheathing placed on one end of the loaded wall at the corner
- Green** = sheathing used in the middle of the wall (roughly 12.5' from applied load)
- Purple** = let-in bracing
- Blue** = a fully sheathed wall

SBCRI Reveals Data...

Continued from page 18

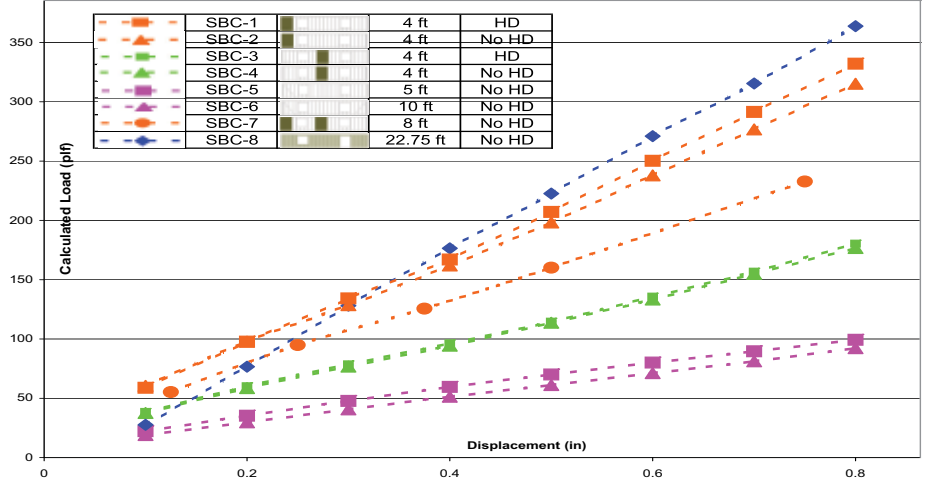
Graph 2 shows the performance of each wall under load in the SBCRI, APA and NAHB RC tests. The purpose of this graph is to provide a foundation for making an assessment of comparative results. The x-axis of the graph is deflection, while the y-axis is the calculated PLF value of each brace type.

Analysis of SBCRI Test Results

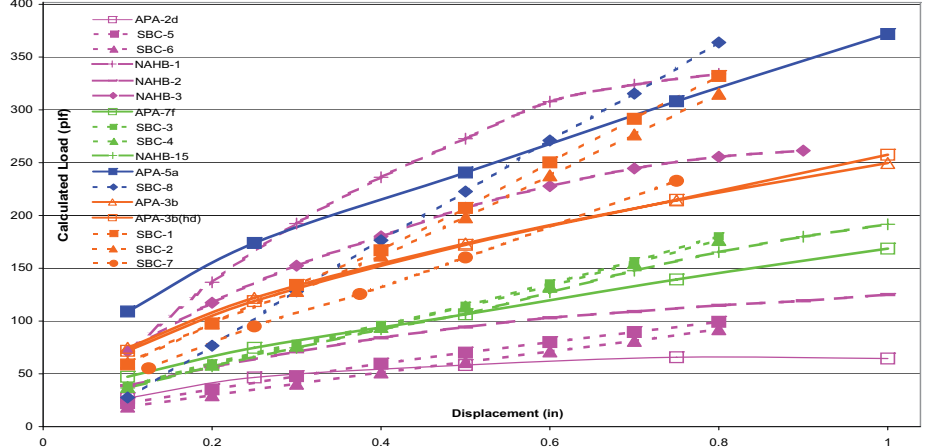
1. SBCRI data is consistent with existing test data. These data reveal that the SBCRI testing provided comparable results to existing tests, which was the primary goal of the testing. The analysis of testing by APA and NAHB RC shows that the SBCRI results are a good

Continued on page 22

Graph 1. PLF Values of Various Wall Setups SBCRI tests



Graph 2. PLF Values of Various Wall Setups



Whether you are working with wood or cold-formed steel, everything about the new TBD truss brace is designed to make diagonal truss bracing easier. It travels in a box like a coiled strap and is formed into shape as it is pulled from the carton, making it rigid and easy to position across trusses. Once fastened into place, the braces lay flat so that they remain in place as the roof is sheathed, eliminating the need to remove the 2x4 or hat-channel braces.

And since the braces stay in place, trusses maintain better alignment and are safer for crews to work on top of. Not to mention that the TBD meets or exceeds the prescriptive bracing recommendations of BCSI. When you are looking for tools that help you do the job faster, while still doing it right, look to Simpson Strong-Tie.

For more information call (800) 999-5099 or visit us at www.strongtie.com.



Brace yourself

For reader service, go to www.sbcmag.info/simpson.htm



®

Applied PLF Load from Test Data at Various Deformations



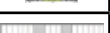


Line Code	Wall Test	Wall Type	Braced Panel Length	Hold Down	0.1	0.125	0.2	0.25	0.3	0.375	0.4	0.5	0.6	0.7	0.75	0.8
	SBC-8		22.75 ft	No HD	27.6	33.8	76.6	102.4	128.1	164.4	176.5	222.6	271.0	315.4	351.7	363.8
	NAHB-1		8 ft	Tension Rod	70.9	79.2	136.7	164.5	192.3	225.2	236.1	272.7	307.8	323.9	331.5	334.1
	SBC-1		4 ft	HD	58.9	68.6	97.8	116.0	134.3	158.8	167.0	207.1	250.3	291.5	332.0	332.1
	APA-5a		12 ft	No HD	109.1	119.9	152.3	173.9	187.3	207.3	214.0	240.7	267.7	294.7	308.2	320.9
	SBC-2		4 ft	No HD	60.5	69.8	97.8	113.1	128.5	153.6	162.0	198.3	238.0	276.8	305.6	315.3
	NAHB-3		16 ft	Tension Rod	71.3	77.0	117.3	134.9	152.4	173.3	180.2	207.3	227.8	244.6	252.8	255.5
	SBC-7		8 ft	No HD	44.2	55.3	79.1	94.9	107.2	125.6	132.5	160.2	189.2	218.3	232.8	-
	APA-3b(hd)		12 ft	HD	52.3	59.3	80.2	94.1	104.8	121.0	126.3	147.8	165.5	183.2	192.0	198.5
	SBC-3		4 ft	HD	38.5	43.9	60.1	69.4	78.6	91.9	96.4	114.6	135.8	156.8	174.5	180.4
	SBC-4		4 ft	No HD	37.6	42.9	58.6	67.7	76.8	90.0	94.4	113.8	133.3	154.9	171.3	176.8
	APA-3b		12 ft	No HD	48.2	53.9	71.1	82.6	92.3	106.9	111.7	131.2	144.6	158.0	164.8	172.0
	NAHB-15		4 ft	No HD	36.6	39.2	57.1	65.9	74.7	87.8	92.2	106.8	127.3	147.7	160.9	165.3
	APA-7f		8 ft	No HD	47.3	51.8	65.5	74.6	81.0	90.5	93.7	106.4	119.6	132.8	139.4	145.2
	NAHB-2		8 ft	Tension Rod	38.8	41.0	56.3	63.6	70.9	80.8	84.1	94.3	103.1	109.0	113.3	114.8
	SBC-5		5 ft	No HD	22.3	25.6	35.3	41.6	47.8	56.7	59.6	70.1	80.1	89.6	96.9	99.3
	SBC-6		10 ft	No HD	19.0	21.7	29.8	35.2	40.7	48.6	51.3	61.2	71.2	81.2	89.5	92.3
	APA-2d		15 ft	No HD	26.9	30.2	40.0	46.6	48.9	52.5	53.6	58.3	61.3	64.3	65.7	65.5

Table 2 -- Comparative Braced Wall Panel Performance @ 0.75" Deformation

The **NEW** VIKING Combo-16

Framing & Sheathing on ONE Platform



Modular:
16' long or
60' long: we can
build the length
you need!

- Manual Stops
- Stud Locators 16" and 24" o/c
- Manual Frame Nailing
- Quick Disconnect Air Fittings for Hand Tools
- Automated Sheathing Nailing
 - Simple to Use Controls
 - Tilt Nailing
 - High Load Coil Capacity
 - Infinite o/c spacing
- Quick Change Tool Mounts
- 2x4, 2x6, and 2x8 capable
- Programmable for Under and Overhung Sheathing

Wall Panel Solutions That Fit Your Business Needs



Viking Wall Panel Systems
800.328.3402
www.wallpanelassembly.com
info@vikingeng.com

Visit the new Viking Parts Store online at www.vikingpartstore.com. Be sure to check out our Deal of the Week!

For reader service, go to www.sbcmag.info/viking.htm



PENNSYLVANIA LUMBERMENS MUTUAL
INSURANCE COMPANY

For over 100 years
we've been protecting
businesses just
like yours.

Tomorrow
we'll do
the same.

wood is all we do.

At PLM, we understand that you need an insurance company with property and casualty insurance products and services that you can trust.

For over 100 years, our experts have been providing quality claims and risk management services to the lumber, woodworking and building material industries. Remember, "you get what you pay for." We understand wood. We know your business... because it's our business too.

If you're looking for quality and value from your insurance provider, give us a call.

Yesterday, Today, Tomorrow... grow knowing you're covered.

John Smith

John K. Smith, CPCU
President and Chief Executive Officer

For more information, please contact the PLM Marketing Department at 800.752.1895 or log on to www.plmins.com.

Pennsylvania Lumbermens Mutual Insurance Company
One Commerce Square
2005 Market Street, Suite 1200
Philadelphia, PA 19103

For reader service, go to www.sbcmag.info/plmins.htm

SBCRI Reveals Data...

Continued from page 20

representation of actual performance of a braced wall panel in a braced wall line in a typical residential structure. This is also confirmed by the fact that the SBCRI results are very linear elastic in nature, which is expected under the reasonably small deformations in the comparison of test results.

2. Braced wall panels with the most and least resistance to load. From the test data analyzed and on a comparative PLF basis, the braced wall type with the most braced wall panel resistance to least braced wall panel resistance at .80" deflection follows:

- Fully sheathed wall: 364 PLF
- Sheathing placed at the leading edge (adjacent to the

applied lateral load) of the wall at the corner: 332 PLF

c. Sheathing placed 12.5' from the corner of the wall: 180 PLF

d. Let-in bracing: approx. 99 PLF

Clearly, the most economically and structurally efficient braced wall panel application is a 4x8 sheet of OSB placed in the corner of a braced wall line.

3. The impact of differences between APA and SBCRI test setup. The physical setup of APA compared to SBCRI had an impact on the SBCRI data. The APA test data displayed a non-linear load deformation curve at what would assume should be linear elastic deformations. For low braced wall line deformations this appeared to have negligible effect on the outcome of the test result. Additionally, the torsion induced into the APA test assembly by loading a single braced wall line caused a non-linear divergence in load deformation results when compared to loading walls symmetrically as was done in the SBCRI testing.

4. ASTM E72 test criteria do not result in data that reflect true load resistance.

Strict adherence to ASTM E72 can easily result in values much greater than what would be expected from normal installation methods. It is reasonable to assume that ASTM E72 test results are dependant on the set-up and vertical restraint conditions that are present for the testing performed. ASTM E72 has great value as a test method when it is used to make direct comparisons of the performance of sheathing materials attached to a wood or steel stud wall or shear wall panel segments where the walls are of consistent size, the set-up is identical and the performance of assembly variations

is the focus of the experiment. ASTM E72 appears to have the potential to provide design values for shear walls that are not reflective of in-situ resistance to applied loads, however. So to the extent that E72 tests are used to establish shear wall design values, these values may not be representative of actual in situ shear wall performance.

5. At locations where there is no braced wall, a minimal amount of load transfer to the foundation was measured.

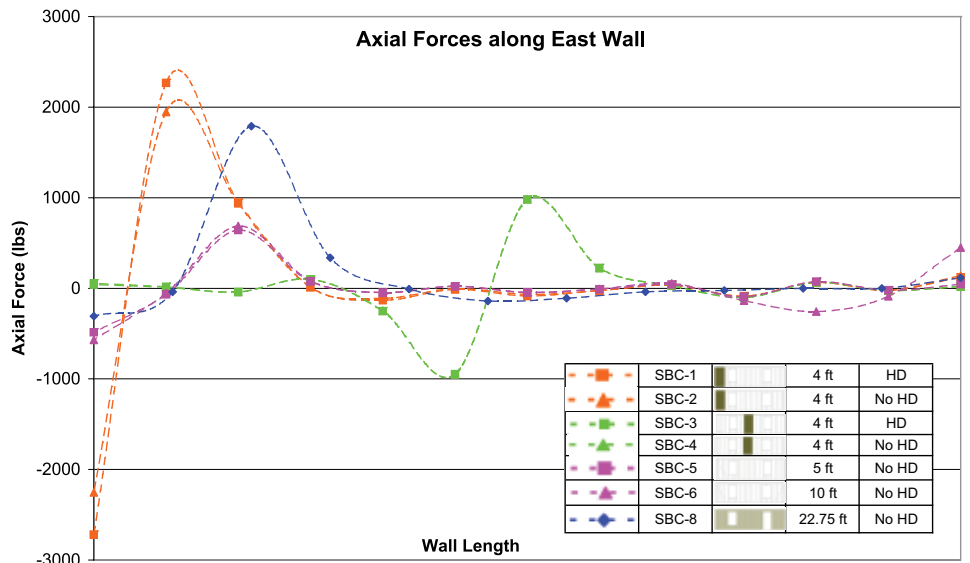
An important observation can be made by analyzing vertical loads along the foundation resulting from an applied lateral load to a braced wall line. In general, the flow of load to the foundation accumulates and is output to the foundation along or at the end of the braced wall panel.

Where there is no braced wall panel there is very little lateral load transfer to the foundation. The SBCRI testing showed that the effect of additional 4x8 sheets of OSB as braced wall panels in a braced wall line is not additive, as shown in Graph 3.

6. The final observation from SBCRI data revolves around the IRC, which prescribes the following with respect to braced wall capacity in braced wall lines:

R602.10.1 Braced wall lines. Braced wall lines shall consist of braced wall panel construction in accordance with Section R602.10.3. The amount and location of bracing shall be in accordance with Table R602.10.1 and the amount of bracing shall be the greater of that required by the seismic design category or the design wind speed. Braced wall panel shall begin no more than 12.5 feet (3810 mm) from each end of a braced wall line. Braced wall panels that are counted as part of a braced wall line shall be in line, except that offsets out-of-plane of up to 4 feet (1219 mm) shall be permitted provided that the total out-to-out offset dimension in any braced wall line is not more than 8 feet (2438 mm).

Our testing calls into question the IRC prescriptive requirements, "Braced wall panels shall begin no more than 12.5 feet (3810 mm) from each end of a braced wall line."



Graph 3. Axial Forces due to Lateral Loading at 0.8" of lateral deformation where Negative Indicates Uplifting Forces (green square and triangle overlay)

The results of this testing shows that additional testing should be done to gain a more thorough understanding of braced wall panels, braced wall lines, and the IRC code provisions in the context of the actual flow of forces through braced wall panels in a braced wall line to the foundation.

This testing generated questions that will be addressed as future industry testing is performed. SBCRI has great potential to add solid technical performance insight with respect to in situ building component applications. **SBC**

The Total Wall Panel Solution



**Don't just cut boards...
cut your costs
with WallBatch
Software!**



These days, making money anyway you can is the name of the game. Optimizing each board you cut is a sure fire way to save money on every job. WallBatch software makes material optimization easy, with automated sorting, multiple job batching, bulk cutting and separation of every piece in a job. Get all the information you need to improve plant flow and material handling, while saving money on raw materials with WallBatch software from IBS! *Call today to setup a demonstration and free 30 day trial!*

866-204-8046 www.intelbuildsys.com



Intelligent Building Systems

is a division of

ITW Building Components Group



Building Synergy • www.itwbcg.com



For reader service, go to www.sbcmag.info/ibs.htm

ALABAMA

Addison Truss & Building Supply, LLC
Cleveland, AL • 205/274-8789
www.tidwellconstruction.com
sam@tidwellconstruction.com

Ballard Truss Inc.
Kellyton, AL • 256/234-4511
ballardtruss@charter.net

Buettner Bros. Lumber Co., Inc
Cullman, AL • 256/734-4221
mwhite@buettnerbros.com

Builders FirstSource/Bama Truss & Components ▼ ◆
Shelby, AL • 205/669-4188
www.bltr.com
joe.odgers@bltr.com

City Lumber Company
Huntsville, AL • 256/533-0110
truss@citylumberco.com

Contractor's Building Systems
Madison, AL • 256/772-4920
www.cbstruss.com
spotter@cbstruss.com

East Alabama Truss & Components, Inc.
Centre, AL • 256/927-4540
oby3@tds.net

John-Co Truss, Inc.
Lineville, AL • 256/396-5006
johnco12@centurytel.net

Liberty Building Products LLC
Grove Hill, AL • 251/275-8666
braybon@libertybp.com

Modern Homes & Equipment Co. ▼
Mobile, AL • 251/476-8343
www.modernhomesinc.net

Phillips Frame & Truss, Inc. ▼
Magnolia Springs, AL • 251/965-7179
dkneven@yahoo.com

Spruiell Truss Co.
Sulligent, AL • 205/698-9800
spruiell@spruielltruss.com

Swift Supply, Inc.
Atmore, AL • 251/368-8800
www.swiftsupply.com
dswift@swiftsupply.com

Trusswalk, Inc.
Arab, AL • 256/753-2948
trusswalkinc@otelco.net

Valley TrussWorks, Inc.
Muscle Shoals, AL • 256/381-4334
www.valleytrussworks.com
vbcbilly@bellsouth.net

ALASKA

Builders Choice, Inc. ▼
Anchorage, AK • 907/522-3214
www.bcialaska.com

ProBuild West ✓ ▼ ▲
Anchorage, AK • 907/261-9299
www.probuild.com
pvanallen@sbsalaska.com

ProBuild West ✓
Kenai, AK • 907/335-1609
www.probuild.com
vcampos@sbsalaska.com

ProBuild West - Big Lake ✓ ▼ ▲
Big Lake, AK • 907/892-7766
www.probuild.com
vnadeau@sbsalaska.com

ProBuild West - Chugiak ✓ ▲
Anchorage, AK • 907/688-4163
www.probuild.com
mstavenjord@sbsalaska.com

ARIZONA

84 Components ✓
Chandler, AZ • 480/855-8284
woodj@84lumber.com

Alliance Components, LLC
Casa Grande, AZ • 602/344-6240
www.alliancecomponentsllc.com
joitzman@alliancecomponentsllc.com

Alliance Engineering
Tolleson, AZ • 602/252-1772
www.alcengineering.com
info@alcengineering.com

Alliance TruTruss, LLC ✓ ▼
Tolleson, AZ • 602/252-1772
www.trustruss.com
info@trustruss.com

Ballard Truss ▼
Eloy, AZ • 520/464-1007
www.ballardtruss.com
cballard@ballardtruss.com

Ballard Truss ▼
Mayer, AZ • 928/632-9300
www.ballardtruss.com
mballard@ballardtruss.com

Ballard Truss ▼
Snowflake, AZ • 928/536-4044
www.ballardtruss.com
dscott@ballardtruss.com

Canyon State Truss, Inc. ▼
Gilbert, AZ • 480/497-4530
www.canyonstatetruss.com

Desert Truss Inc.
Glendale, AZ • 623/516-0586
www.deserttruss.com
trussdude@aol.com

Erickson Building Components
Chandler, AZ • 480/627-1140
dwight@ericksoncompanies.com

Foxworth-Galbraith Lumber Company - District Office
Mesa, AZ • 480/835-1031
www.foxgal.com

Foxworth-Galbraith Truss Co.
Gilbert, AZ • 480/926-0077
www.foxgal.com

Foxworth-Galbraith Truss Co. ▼
Tucson, AZ • 520/571-1445
www.foxgal.com

Foxworth-Galbraith Truss Co.
Yuma, AZ • 928/345-2178
www.foxgal.com

Foxworth-Galbraith Truss Co. - Prescott Valley Truss
Dewey, AZ • 928/775-3300
www.foxgal.com

Grant Road Lumber Company, Inc.
Tucson, AZ • 520/662-6100
rhw@grantroadlumber.com

Holderness Supplies
Tucson, AZ • 520/889-1300
egarcia@holdernesssupplies.com

JMW Truss & Components
Yuma, AZ • 928/726-6811
www.jmwtruss.com
rich@jmwtruss.com

L & L Manufactured Components
Tucson, AZ • 520/884-5355
www.lztruss.com
reedsnell@qwestoffice.net

Phelps & Sons, Inc. ▼
Cottonwood, AZ • 928/634-7541
mmp Phelps@phelppsinc.net

ProBuild West ▼
Phoenix, AZ • 602/353-8430

Pulte Building Systems, LLC ▼
Tolleson, AZ • 623/889-7135
tim.vermillion@pulte.com

R & K Building Supply ▼
Mesa, AZ • 480/892-1200
www.randkbuildingsupplies.com
trusses@randkaz.com

Schuck Component Systems, Inc. ▼
Glendale, AZ • 623/931-3661
www.schuckaz.com

Select Build/Glendale Truss ▼
Glendale, AZ • 623/934-9144
www.selectbuild.com
bob.barrette@selectbuild.com

Sun State Components ✓ ▼ ▲
Kingman, AZ • 928/757-2700
www.sunstatecomponents.com
sunstate@frontiernet.net

Sun State Components, Inc. ✓ ▼ ▲
Surprise, AZ • 623/584-8151
www.sunstateaz.com
tsl@sunstateaz.com

Truss Fab, LLC
Glendale, AZ • 623/215-2738
www.truss-fab.com
dean@truss-fab.com

Trussway Phoenix
Chandler, AZ • 602/273-7323
www.trussway.com

U.S. Components, LLC ✓ ▼
Tucson, AZ • 520/882-3709
www.us-components.com
keith.azlin@us-components.com

Western Truss & Components ▼
Flagstaff, AZ • 928/527-0066
mitch@westerntruss.com

Western Truss & Components ▼
Lake Havasu City, AZ • 928/505-6591

Yuma Truss Company
Yuma, AZ • 928/344-3566
www.yumatruss.com
yumatruss@primenet.com

ARKANSAS

Capital Structures, Inc. ✓ ▼
Fort Smith, AR • 479/783-8666
www.capstructures.com
ssradlin@capstructures.com

Contractor's Truss Systems, Inc
Cotter, AR • 870/435-5655
www.contractorstruss.com
cts@northarkansas.net

Davis Hill Truss Company LLC
Mt. Holly, AR • 870/554-2229
kcd@wildblue.net

Davis Truss Mfg.
Texarkana, AR • 870/773-6866
michaelc@davisrooftruss.com

Gator Joist, LLC
Pottsville, AR • 479/641-2407
www.gatorjoist.com

Gator Joist, LLC
Rudy, AR • 479/783-3385

Gazaway Lumber Company, Inc.
Paragould, AR • 870/236-7666
www.gazawayace.com
gazace@gazawayace.com

H & H Truss & Supply, Inc.
Clarksville, AR • 479/754-4999

H & T Truss Mill, Inc.
Arkadelphia, AR • 501/384-5249
httruss@catc.net

Latco Structural Components ✓ ▼
Lincoln, AR • 479/824-3282
www.latcowoodtruss.com
mswope@latcoinc.com

Pine Grove Wood Products
Harrisburg, AR • 870/578-2766
fwrberts@sbcglobal.net

Square One Truss, Inc.
Fayetteville, AR • 479/439-0320
www.square1truss.com
bhughes@square1truss.com

Structural Building Components
Van Buren, AR • 479/922-4722
jmoorefsm@gmail.com

The Truss Company
Batesville, AR • 870/793-5134
thetrussco@yahoo.com

CALIFORNIA

Advanced Truss Systems, Inc.
Lancaster, CA • 661/940-8100
tom@southlandframers.com

Aloha Lumber & Truss, Inc.
Ramona, CA • 760/788-9450
www.alohatruss.com
redline@tns.net

Anderson Truss
North Highlands, CA • 916/971-2342

Anderson Truss Company ▼
Dixon, CA • 707/678-1636

Anderson Truss-Visalia ▼
Visalia, CA • 559/651-7800

BMC West Corporation ▼
Fresno, CA • 559/456-9637
www.bmcwest.com
frausto@bmcwest.com

Brown & Honeycutt Truss Systems, Inc.
Hesperia, CA • 760/244-8887
www.bhtruss.com
mhough@ix.netcom.com

Builders Choice, Inc. ▼
Hughson, CA • 209/883-8000
www.bcitruss.com
soverholtzer@bcitruss.com

Cal-Asia Truss ▼
Concord, CA • 925/680-7701
www.cal-asia.com
info@cal-asia.com

California Truss Company ▼
Perris, CA • 951/657-7491
www.caltruss.com
kenc@caltruss.com

Central Valley Builders Supply
Napa, CA • 707/261-7928
www.cvbssupply.com
bobj@cvbssupply.com

Central Valley Truss Company
Woodland, CA • 530/309-3700
gregm@cvtruss.com

Construction Framing Specialists
Durham, CA • 530/342-5844
jratekin@cfschico.com

Dolan Building Materials, Inc. ▼
Sacramento, CA • 916/383-6501

Escondido Roof Truss Co., Inc. ▼
San Marcos, CA • 760/744-4040
www.escondidotruss.com
info@escondidotruss.com

Fresno Truss LLC ▼
Del Rey, CA • 559/888-2097
trinidad@fresnotruss.com

Gang-Nail Truss Co., Inc. ▼
Fresno, CA • 559/261-3051

Gang-Nail Truss Co., Inc. ▼
Visalia, CA • 559/651-2121
www.gangnailtruss.com
jimf@gangnailtruss.com

Gehrig Component Framing ✓
Tracy, CA • 209/835-5584
www.gehrigcomponent.com
Christian@gehrigcomponent.com

General Truss Company, Inc.
Sacramento, CA • 916/388-9300
www.generaltruss.com

Goldenwood Truss Corp.
Ventura, CA • 805/659-2520
www.goldenwoodtruss.com
kevin@goldenwoodtruss.com

Hayward Lumber Company, LLC
Monterey, CA • 831/643-1900
www.haywardlumber.com

Hayward Truss, LLC
Santa Maria, CA • 805/928-7441
www.haywardlumber.com
rpinson@haywardlumber.com

HMR
Newport Beach, CA • 949/270-3625
bnutting@rsihc.com

Homecraft Building Materials
Weaverville, CA • 530/623-5225
mike@schmidbauerhomectr.com

Homewood Truss ▼
Marysville, CA • 530/743-8855
bryanw@homewoodtruss.com

Inland Empire Truss, Inc.
Riverside, CA • 951/300-1758
www.inlandtruss.com
dmeier@inlandtruss.com

Inland Valley Truss, Inc.
San Jose, CA • 408/573-8521
www.inlandtruss.com
lallen@inlandtruss.com

Inter Mountain Truss Co., Inc.
Oakdale, CA • 209/847-9184
imt@thevision.net

JMW Truss & Components
Cathedral City, CA • 760/202-3699
www.jmwtruss.com
john@jmwtruss.com

Las Plumas Lumber & Truss Co., LLC
Riverside, CA • 951/681-2211
bkircher@lasplumas.com

Longfellow Lumber Company, Inc. ▼
Chico, CA • 530/893-0112
trusses@longfellowlumber.com

Mead Clark Truss Company, Inc. ▼
Santa Rosa, CA • 707/576-3333
www.meadclark.com

NexFrame LP ▼ ◆
Stockton, CA • 209/463-1313
www.nexframe.com
rdonnini@nexframe.com

OB Lumber Inc. Truss Division ▼
Fresno, CA • 559/442-0652
www.oblumber.net
yenser@besmerconst.com

Piedmont Lumber-Truss Division
Calpella, CA • 707/485-8781
www.piedmontlumber.com
tcarley@piedmontlumber.com

ProBuild West ▼
National City, CA • 619/263-6161
www.probuild.com
dtruax@probuild.com

ProBuild West - Visalia ▼
Visalia, CA • 559/334-1300

Roof Components, Inc.
Bishop, CA • 760/873-6845
roofcomp@squish.us

Rosamond Truss Inc.
Rosamond, CA • 661/256-8575
www.rosamondtruss.com
jim@rosamondtruss.com

RSI Professional Cabinet Solutions
Chino, CA • 909/614-2900

Schmidbauer Building Supply
Eureka, CA • 707/443-7089
www.sbsseureka.com
Jesse@sbsseureka.com

Select Truss ▼
Riverside, CA • 951/275-8890
normans@selecttruss.net

SelectBuild
Poway, CA • 858/486-2471
www.selectbuild.com
john.brousseau@selectbuild.com

Sierra Foothills Truss Company
Grass Valley, CA • 530/477-5242
www.sierrafoothillstruss.com
info@sierrafoothillstruss.com

Spates Fabricators, Inc.
Thermal, CA • 760/397-4122
www.spates.com
david@spates.com

Stockton Truss ▼ ◆
Stockton, CA • 209/464-7358
travis@stocktontruss.com

Stone Truss Company, Inc. ▼
Oceanside, CA • 760/967-6171
www.stonetruess.com
gary@stonetruss.com

Structural Wood Systems
Ridgecrest, CA • 760/375-2772
sws@iwvisp.com

T N Truss Components ▼
Chatsworth, CA • 818/700-0041

T.C. Truss, Inc.
Salinas, CA • 831/663-8787
www.tctruss.com
tctruss@mbay.net

The Truss Company, Inc.
Banning, CA • 951/922-2532
thetrusscompany.banning@verizon.net

Thomas Home Center ▼
McKinleyville, CA • 707/839-3222
www.ThomasHomeCenter.com
tcr@northcoast.com

Tri State Truss Corp. ▼
Needles, CA • 760/326-3868
tristatetruss@frontiernet.net

Tri-K Truss Company ▼
Porterville, CA • 559/784-8511
www.tri-k-truss.com
larry@tri-k-truss.com

TrusFrame ▼
Rancho Cucamonga, CA • 909/484-4800
www.trusframe.com
rhanna@trusframe.com

TrusPro, Inc. ▼ ◆
Guadalupe, CA • 805/343-2555
www.truspro.com
truspro@truspro.com

Universal Forest Products, Inc (dba) - Riverbank CA
Riverbank, CA • 209/869-4545
www.durabilt.net
info@durabilt.net

Universal Forest Products, Inc.
Thornton, CA • 209/794-8750

Universal Truss, Inc. ▼
Fontana, CA • 909/823-9500
www.ufpi.com
customerservice@ufpi.com

Villa Truss ▼
Lodi, CA • 209/333-7117
www.villatruss.com
duane@villatruss.com

Williams Lumber, Inc.
Sacramento, CA • 916/383-1615
www.williamslumberinc.com
phil@williamstruss.com

COLORADO

Alpine Lumber Co. / Truss West
Montrose, CO • 970/249-0801
www.alpinelumber.com

BMC West Corporation ▼
Fort Lupton, CO • 303/857-4391
www.bmcwest.com
msmith@bmcwest.com

Chase Lumber Truss Division ▼
Aurora, CO • 303/363-1010
CHASETRUSS@aol.com

Colony Truss ◆
Commerce City, CO • 303/288-2635
www.colonymetal.com
sbechtholdt@colonymetal.com

Crowley Truss
Sugar City, CO • 719/267-4140

DMS Building Components, Inc.
Colorado Springs, CO • 719/632-7271

Fort Collins Truss
Fort Collins, CO • 970/484-7313
fctrussmark@fri.com

Foxworth-Galbraith Lumber Company
Colorado Springs, CO • 719/471-4500

Foxworth-Galbraith Truss Co. ▼
Colorado Springs, CO • 719/598-4500

High Country Building Components LLC ◆
Delta, CO • 970/323-6626
martin@hicobc.com

KeyBuild Solutions, Inc. ▼
Denver, CO • 303/293-8787
jcalhoon@keybuildsolutions.com

Lafayette Lumber Co
Lafayette, CO • 303/665-5039
sales@lafayettelumber.com

McWebb, Inc.
Loveland, CO • 970/667-6365
jim@mcwebbtruss.com

ProBuild South ▼
Dolores, CO • 970/565-9207
www.probuild.com
cortez.co@timberroots.com

ProBuild South ▼
Longmont, CO • 303/485-9894
www.probuild.com

Rigid Component Systems
Longmont, CO • 720/652-4800
www.rooftruss.com
greg@rooftruss.com

Spelts-Schultz Truss
Denver, CO • 303/288-4214

Sterling Component Systems
Sterling, CO • 970/522-2464
stcomps@kci.net

Stock Components ▼
Denver, CO • 303/289-5461
www.stocksupply.com

TEAM Panels International ▼ ◆
Englewood, CO • 303/935-8575
www.teampanels.com
gmiller@teampanels.com

TrusFab, Inc.
New Castle, CO • 970/984-2336

Universal Forest Products, Inc. ▼
Lafayette, CO • 303/666-6800
www.ufpi.com
customerservice@ufpi.com

Universal Forest Products, Inc.
Windsor, CO • 970/686-5631
www.ufpi.com
customerservice@ufpi.com

Ward-Vonne Inc. Truss Division
Commerce City, CO • 303/286-7511
www.ward-vonne.com
ward-vonne@qwestoffice.com

Wholesale Truss Company, LLC
Grand Junction, CO • 970/241-1500
smithchell@wholesaletruss.com

CONNECTICUT

Truss Manufacturing, Inc.
Newington, CT • 860/665-0000
www.trussmfg.com
mario@trussmfg.com

Universal Component Corporation ▼
Branford, CT • 203/488-7207
tommy@universalcomponent.com

DELAWARE

All-Span, Inc. ◆
Bridgeville, DE • 302/349-9460
www.allspaninc.com
griffith@allspaninc.com

Sam Yoder and Son, Inc. ▼
Greenwood, DE • 302/398-4711
www.samyoder.com
trusses@samyoder.com

Universal Forest Products, Inc.
Georgetown, DE • 302/855-1250
www.ufpi.com
customerservice@ufpi.com

Warren Truss Company
Newark, DE • 302/368-8566
www.warrentruss.com
warrentruss@comcast.net

FLORIDA

41 Truss
Spring Hill, FL • 813/996-3981
www.41truss.com
plans@41truss.com

84 Components
Bradenton, FL • 941/750-9984

A-1 Roof Trusses ▼
Fort Pierce, FL • 772/409-1010

Builders FirstSource ▼
Bunnell, FL • 386/437-3349
www.buildersfirstsource.com
pete.potter@bldr.com

Builders FirstSource ▼
Jacksonville, FL • 904/772-6100
www.buildersfirstsource.com

Builders FirstSource ▼
Lake City, FL • 386/755-6894
www.buildersfirstsource.com

Builders FirstSource ▼
Pinellas Park, FL • 727/548-4785
www.buildersfirstsource.com
Mark.Blahnik@buildersfirstsource.com

Builders FirstSource ▼
Sanford, FL • 407/322-0059
www.buildersfirstsource.com

Builders FirstSource ▼
Tammie.Pettis@Buildersfirstsource.com

Builders FirstSource ▼
Tampa, FL • 813/621-9831
www.buildersfirstsource.com
stephen.santos@bldr.com

Builders FirstSource - Treasure Coast Truss ▼
Fort Pierce, FL • 772/468-8160
www.buildersfirstsource.com

Builders FirstSource ▼
dominic.williams@bldr.com

Carpenter Contractors of America
Winter Haven, FL • 863/294-6449
www.carpentercontractors.com
jim@carpentercontractors.com

Causeway Lumber Company, Inc.
Bonita Springs, FL • 239/992-3423

Causeway Lumber Company, Inc.
Fort Lauderdale, FL • 954/763-1224
www.causewaylumber.com
sales@causewaylumber.com

Causeway Lumber Company, Inc.
Stuart, FL • 772/781-2332

Central Florida Division, Southern Building Products
Auburndale, FL • 863/965-7173

Chambers Truss, Inc. ▼
Fort Pierce, FL • 772/465-2012
www.chamberstruss.com
mail@chamberstruss.com

Crown Structures, Inc. ◆
Jacksonville, FL • 904/924-8164
crwnstrc@bellsouth.net

Crowther Roofing and Sheet Metal of Florida ◆

Fort Myers, FL • 239/337-1300
www.crowther.net
blakel@crowther.net

Deco Truss Company, Inc. ▼
Princeton, FL • 305/257-1910
www.decotruss.com
marioj@decotruss.com

East Coast Lumber ▼
Fort Pierce, FL • 772/466-2480
www.eastcoastlumber.com

East Coast Lumber - Truss Division ▼
Melbourne, FL • 321/254-1581
www.eastcoastlumber.com

East Coast Lumber - Truss Division ▼
melbtruss@eastcoastlumber.com

Fernandina Lumber & Supply Co
Fernandina Beach, FL • 904/261-3641
www.fernandinalumber.com
jimyers@lumberunlimited.com

Florida Forest Products
Largo, FL • 727/585-2067
www.fptruss.com
engineering@fptruss.com

Florida Roof Truss Company
Ocala, FL • 352/732-4245
henryjg@msn.com

Florida Truss & Fabricators, Inc. ◆
Vero Beach, FL • 772/567-1593
flatrussfab@aol.com

Freeport Truss Co. Inc. ▼
Freeport, FL • 850/835-4541

Johnson's Lumber & Supply, Inc.
Tallahassee, FL • 850/562-2178
johnsonslumber@aol.com

Kimal Lumber Company
Nokomis, FL • 941/484-9721
www.kimallumber.com
rmatto@kimallumber.com

Kimal Lumber Company
Venice, FL • 941/484-3996
www.kimallumber.com
pambrose@kimallumber.com

Manning Building Supplies ▼
Jacksonville, FL • 904/268-8225
www.mbs-corp.com
JaxTruss@mbs-corp.com

Manning Building Supplies ▼
Ocala, FL • 352/387-2572

Manning Building Supplies
Orlando, FL • 407/295-1891
www.mbs-corp.com

Manning Building Supplies ▼
St Augustine, FL • 904/829-6467
www.mbs-corp.com

Midstate Roof Truss & Timber
Ocala, FL • 352/622-7252
midstatett@earthlink.net

Mid-State Truss Co.
Lakeland, FL • 863/665-1309
info@midstatetruss.com

ProBuild East ✓ ▼
Lady Lake, FL • 352/259-1768
www.probuild.com

ProBuild East ✓ ▼
Ocala, FL • 352/307-7600
www.probuild.com

ProBuild East ✓ ▼
Plant City, FL • 813/305-1300
www.probuild.com

ProBuild South ✓ ▼
Milton, FL • 850/626-9620
www.probuild.com

Raney Components, LLC
Groveland, FL • 352/429-9429
sharron@raneycomponents.com

Raymond Building Supply Corp.
North Fort Myers, FL • 239/731-8300
www.rbsc.net

Raymond Building Supply Corp.
North Port, FL • 941/429-1212
www.rbsc.net

Ridgway Roof Truss Company, Inc. ▼
Gainesville, FL • 352/376-4436
www.ridgwaytruss.com
sales@ridgwaytruss.com

Scosta Corporation
Belle Glade, FL • 863/381-3634
veno@scostacorp.com

Scosta Corporation ♦
Sebring, FL • 863/385-8242
www.scostacorp.com

Scosta Corporation ▼ ♦
Winter Haven, FL • 863/381-5646

Seminole Trusses, Inc. ▼
Midway, FL • 850/575-0102
trusses@seminoletrusses.com

Southern Building Products, Inc. ▼
West Palm Beach, FL • 561/848-6646
randy@southerntruss.com

Space Coast Truss Inc. ▼
Rockledge, FL • 407/632-7511
www.sctruss.com

Stark Truss Company, Inc. ▼
Bradenton, FL • 941/755-5165
www.starktruss.com
john.stahler@starktruss.com

Stark Truss Company, Inc. ✓ ▼
Rockledge, FL • 321/639-3475
www.starktruss.com
greg.savage@starktruss.com

Steel Technology & Design ♦
Lakeland, FL • 863/665-2525
www.steeltechnologyanddesign.com
tomdavis@steeltechnologyanddesign.com

Stock Components-Winter Haven ✓ ▼
Winter Haven, FL • 863/294-0611
www.stocksupply.com

TJ Truss Corp ▼
Fort Pierce, FL • 772/466-3388
www.tjtruss.com
twhite@tjtruss.com

True House, Inc. dba True Truss ✓ ▼ ▲ ✱
Jacksonville, FL • 904/757-7500
www.truehouse.com

Truss Systems LLC ♦
Bunnell, FL • 386/255-3009
trusses@bellsouth.net

Trussway, Ltd. - Southeast Division ▼
Orlando, FL • 407/857-2777
www.trussway.com

Trusswood Inc.
Titusville, FL • 321/383-0366
www.trusswood.net
general@trusswood.net

U.S. Truss, Inc.
West Palm Beach, FL • 561/686-4000
ustruss@ustruss.com

Universal Forest Products, Inc.
Auburndale, FL • 863/965-2566
www.ufpi.com
customerservice@ufpi.com

Universal Forest Products, Inc.
Ocala, FL • 352/687-3956
www.ufpi.com
customerservice@ufpi.com

W. Kost, Inc.
Palm City, FL • 772/286-3700
wkost@gate.net

W. W. Truss Co. Inc.
Ormond Beach, FL • 386/673-0441
ww_truss@yahoo.com

Wakulla Lumber and Trusses ▼
Crawfordville, FL • 850/926-8919
www.wakullatrusses.com
carol@wakullatrusses.com

West Coast Truss, Inc. ▼
Tampa, FL • 813/887-4510
johnholey@westcoasttruss.com

West Orange Truss ▼
Oakland, FL • 352/429-3639
www.westorangelumber.com
ron@westorangelumber.com

GEORGIA

Bragg Enterprises, Inc.
Bloomingtondale, GA • 912/748-7528
jrbagg@bellsouth.net

Brand Vaughan Lumber Company, Inc.
Tucker, GA • 770/414-9876
www.bvlumber.com
rfrench@bvlumber.com

Builders FirstSource ▼
Atlanta, GA • 770/613-0002
www.buildersfirstsource.com

Builders Truss Mfg ▼
Woodbine, GA • 912/729-2283
www.btruss.com
kahuna@btruss.com

Construction Components, Inc.
Cornelia, GA • 706/776-6656
constructioncomponents@alltel.net

Georgia Mountain Components ▼
Oakwood, GA • 770/534-0364
contact@gamtn.com

Georgia Truss LLC ▼
Gainesville, GA • 770/534-8164
ronnie@gatruss.com

Kelley Truss, Inc.
Dearing, GA • 706/595-8004
r.kelley22@comcast.net

Lake Shore Truss, Inc. ▼
Lavonia, GA • 706/356-2460
www.lakeshoretruss.com
lkshore@alltel.net

Load Star
Lavonia, GA • 706/356-5041
www.harbinlumber.com
cmoon@harbinlumber.com

Load Star / Lavonia
Lavonia, GA • 706/356-4600
www.harbinlumber.com
loadstar@alltel.net

Load Star / Midway ▼
Midway, GA • 912/884-4848
www.harbinlumber.com
loadstar@coastalnow.net

Mulherin Lumber Co. ▼
Evans, GA • 706/736-2039
www.mulherinlumber.com
sean@mulherinlumber.com

North Georgia Truss Inc. ▼
Cartersville, GA • 770/387-4227
ngruss.com
steven@ngruss.com

ProBuild East ✓ ▼
Pooler, GA • 912/330-9991
www.probuild.com

ProBuild South ✓ ▼
Norcross, GA • 770/813-2200
www.probuild.com

Robert's Components
LaGrange, GA • 706/884-1700
trusses@robertscomponents.com

Specialty Structural Products, Inc. ▼
Griffin, GA • 770/228-4999
www.specialtystructural.com

Sterling Building Systems
Lakeland, GA •
www.SterlingBldg.com

Stock Components
Tucker, GA • 770/492-6982
www.stocksupply.com

Structural Wood Systems of Georgia ▼
Kennesaw, GA • 770/427-3742
www.structuralwoodsystems.com
info@structuralwoodsystems.com

Taylor Truss, Inc. ♦
Palmetto, GA • 770/463-4589
www.taylortruss.com
jstewart@taylortruss.com

Total Building Services Group ▼
Marietta, GA • 770/499-8382
www.tbsgatl.com
TJCoombs@tbsgatl.com

Truss Specialties, Inc.
Conyers, GA • 770/483-1622

Truss Systems, Inc. ✓ ▼ ♦ ✱
Oxford, GA • 770/787-8715
www.trussystemsinc.com
rbrown@trussystemsinc.com

Truss Tech Industries, Inc. ▼
Buford, GA • 770/271-1347
www.trusstechind.com
sales@trusstechind.com

TrussMart Building Components ▼
Midway, GA • 912/884-4094
rdloach@trussmart.com

Trussway, Ltd. - Southern Division
Acworth, GA • 770/975-5777

Universal Forest Products, Inc.
Jefferson, GA • 800/779-0936
www.ufpi.com
customerservice@ufpi.com

Universal Forest Products, Inc.
Moultrie, GA • 229/985-4009
www.ufpi.com
customerservice@ufpi.com

Universal Forest Products, Inc.
Union City, GA • 770/472-3050
www.ufpi.com
customerservice@ufpi.com

Valley Components, Inc. ▼
Columbus, GA • 706/689-3259

Wausau Homes, Inc.
Lakeland, GA •
www.WausauHomes.com

HAWAII

AMT Truss ✓ ▼
Kapolei, HI • 808/682-8844
www.amttruss.com
rettlam@earthlink.net

Honsador Truss - dba Ariel Truss Hawaii, Inc. ▼
Kapolei, HI • 808/682-2011

Honsador Truss Hilo ✓ ▼
Hilo, HI • 808/961-6000

Honsador Truss Kapolei ✓ ▼
Kapolei, HI • 808/682-5859

Island Truss
Lihue, HI • 808/245-3990
vickers@hawaiian.net

Precision Truss, LLC ▼
Kapolei, HI • 808/690-1222
keatruss@yahoo.com

Truss Systems Hawaii, Inc.
Kahului, HI • 808/877-0036
sales@trussys.com

IDAHO

Baldy Truss Company
Sandpoint, ID • 208/263-2356
jeff9999@verizon.net

BMC West Corporation ✓ ▼
Boise, ID • 208/376-5505
www.bmcwest.com
cottengim@bmcwest.com

BMC West Corporation ✓ ▼
Idaho Falls, ID • 208/523-6691
www.bmcwest.com

Circle Three Industries
Post Falls, ID • 208/773-7755
cb@circlethree.biz

Coeur D'Alene Builders Supply
Coeur D'Alene, ID • 208/667-6481
www.cdabldr.com
joshm@cdabuilders.com

Franklin Building Supply ▼
Jerome, ID • 208/324-8161

Gem State Truss Co, Inc. ▼
Nampa, ID • 208/461-1234
www.gemstatetruss.com
gst@gemstatetruss.com

Idaho Truss & Component Co. ▼ ♦
Nampa, ID • 208/442-9500
www.idahotruss.com

Mountain Truss and Components, Inc.
Idaho Falls, ID • 208/528-7305
will@mountaintrussif.com

Northwest Building Components, Inc.
Rathdrum, ID • 208/687-9490
padams@nwb.com.com

Roberts Truss, Inc. ▼
Mountain Home, ID • 208/587-9396
rtruss@mindspring.com

Stock Components-Coeur D'Alene ✓ ▼
Coeur D'Alene, ID • 208/765-3307
www.stocksupply.com

Summit Truss ▼
St Anthony, ID • 208/624-0333

Trussworks, Inc. ▼
Idaho Falls, ID • 208/522-8787
trussworks@cablone.net

Valley Truss Company, Inc. ▼
Boise, ID • 208/362-1089
jason@valleytruss.com

ILLINOIS

Alco White, Inc. ▼
Jacksonville, IL • 217/245-1144
www.alcowhite.net
alcowhite@irtc.net

Alexander Lumber Co.
Aurora, IL • 630/844-5123
www.alexbr.com

Anderson Truss Co, Inc. ▼
Pittsburg, IL • 618/982-9228
atruss@verizon.net

Atlas Components, Inc. ▼
Rockford, IL • 815/332-4904
mkarceski@atlasci.com

Bear Creek Truss, Inc.
Tuscola, IL • 217/543-3329
www.bearcreektruss.com
bearcreek@one-eleven.net

Carpenter Contractors of America - dba R & D Thiel ▼
Belvidere, IL • 815/544-1699
www.rdthiel.com
howardg@rdthiel.com

Central Illinois Truss, Inc. ▼
Morton, IL • 309/266-8787
michael_rassi@hotmail.com

Chester Construction Supply, Inc.
Chester, IL • 618/826-5063
www.chesterconstructionsupply.com
barry@chesterconstructionsupply.com

Coach House Inc.
Arthur, IL • 217/543-3761
jimyoder@coachhousegarages.com

Cortland Components
Cortland, IL • 815/754-1000
www.alexbr.com
alco12@earthlink.net

Edward Hines Lumber Co.
Buffalo Grove, IL • 847/353-7700
www.hineslumber.com
mhines@hineslumber.com

Meek's Resource & Design
Springfield, MO • 417/889-1929
www.meeks.com
Bucko@meeklumber.com

Mid America Truss
Jefferson City, MO • 573/395-3400
midamtruss@midamtruss.com

Mountain Grove Components ♦
Mountain Grove, MO • 417/926-1311
www.mtngc.com
mdwthompson@mtngc.com

Negwer Materials, Inc. ♦
Ferguson, MO • 314/522-0579
www.negwer.com
pwi@helms@negwer.com

Now Structures, Inc.
Nevada, MO • 417/667-3022
www.trussnow.com
tnowak1@trussnow.com

Pioneer Industries, LLC ▼
Owensville, MO • 573/437-5131
chris@pioneertruss.com

Quality Truss Company
Smithville, MO • 816/532-3000
www.qualitytrusscompany.com
qtc@qualitytrusscompany.com

Route 66 Truss ▼
Niangua, MO • 417/473-6854
www.route66truss.com
route66truss@centurytel.net

Snow Hill Truss ▼
Troy, MO • 636/462-7600
SnowHillTruss@starband.net

Stark Truss Company, Inc. ▼
Perryville, MO • 573/547-9099
www.starktruss.com
rick.weinkein@starktruss.com

The Building Center, Inc. ▼
Urich, MO • 660/638-4322
www.kctrussanddoor.com
donna@kctrussanddoor.com

Thompson Truss Co., Inc.
New London, MO • 573/985-3999
thompsontruss@rallstech.com

Vivco Components, LLC ▼
Maysville, MO • 816/449-2161
vivco@centurytel.net

MONTANA

BMC West ▼
Missoula, MT • 406/543-1706
www.bmcwest.com
kevinjohnson@bmcwest.com

BMC West Corporation ▼
Helena, MT • 406/449-5553
www.bmcwest.com
reed@bmcwest.com

BMC West Corporation ▼
Kalispell, MT • 406/756-5707
www.bmcwest.com
backer@bmcwest.com

EBC Trusses
Billings, MT • 406/259-1814
ebctruss@vcn.com

Eminkay Trusses & Components
Billings, MT • 406/651-5700
www.eminkay.com
mikej@eminkay.com

High Mountain Truss
Darby, MT • 406/821-3077
www.highmountaintruss.com
info@highmountaintruss.com

Kenyon Noble Truss Manufacturing ▼
Bozeman, MT • 406/586-0538
www.kenyon-noble.com
trussplant@kenyonnoble.com

Rocky Mountain Truss Co.
Stevensville, MT • 406/777-0210
jess@rockymountaintruss.net

Simkins-Hallin Lumber Company
Bozeman, MT • 406/586-5495
www.simkins-hallin.com
jim@simkins-hallin.com

Skill Built Truss LP ▼
Butte, MT • 406/723-8305
mikeo@copper.net

Thomae Truss ▼
Billings, MT • 406/256-0740
www.thomaelumber.com
truss@thomaelumber.com

Trout Creek Truss Inc.
Noxon, MT • 406/847-7663
www.troutcreektruss.com
james@troutcreektruss.com

WBC Building Components
Columbia Falls, MT • 406/892-2171
don@wbctruss.com

NEBRASKA

Advanced Building & Components, Inc.
Mead, NE • 402/624-2044
www.abcwalls.com
bobs@abcwalls.com

Christensen Lumber Co. ▼
Fremont, NE • 402/721-3212
www.logger.com
dan@logger.com

Heritage Homes of Nebraska, Inc.
Wayne, NE • 402/375-4770
www.heritagehomesofne.com
kevins@heritageind.com

Millard Lumber, Inc. ▼
Waverly, NE • 402/786-3030
www.millardlumber.com
wood@millardlumber.com

Roberts & Dybdahl, Inc. ▼
Omaha, NE • 402/341-3246
www.robertsdybdahl.com
thecker@robertsdybdahl.com

Spelts-Schultz Truss
Grand Island, NE • 308/382-2953

NEVADA

A.C. Houston Lumber Co. ▼
North Las Vegas, NV • 702/633-5000
www.houstonlumber.com
info@houstonlumber.com

Builders Choice, Inc. ▼
Silver Springs, NV • 775/577-4500
www.bctruss.com
poverholtzer@bctruss.com

Desert Truss LLC ▼
Las Vegas, NV • 702/642-7800
www.deserttrusslv.com

Evolution Truss ▼
Las Vegas, NV • 702/216-1685
www.evolutiontruss.com
evolutiontruss@hotmail.com

M-Truss & Components, LLC ▼ ♦
Las Vegas, NV • 702/222-3303
www.mtruss.com
tom@mtruss.com

Piedmont Lumber
Fernley, NV • 775/835-8446
www.piedmontlumber.com
dbostwi@piedmontlumber.com

Pulte Building Systems, LLC
North Las Vegas, NV • 702/657-6414

RDRC, llc
Henderson, NV • 702/568-7372
www.rdr-llc.com
rkrueger@rdr-llc.com

Reno Truss, Inc. ▼
Sparks, NV • 775/322-8755
www.renotruss.com
beebe@renotruss.com

SelectBuild - Las Vegas Truss ▼
Las Vegas, NV • 702/632-3001

Silver State Components, Inc.
North Las Vegas, NV • 702/399-1000

Sun State Components of Nevada, Inc. ▼ ♦ ▲ ❄ ❄ ❄
North Las Vegas, NV • 702/657-1889
www.sunstatenv.com
glenn@sunstatenv.com

NEW HAMPSHIRE

Beau-Trusses ▼
Boscawen, NH • 603/796-6200
dave@pab.ca

LaValley Building Supply, Inc. ▼
Newport, NH • 603/863-1050
www.lavalleys.com
info@lavalleys.com

Preferred Buildings ▼
Claremont, NH • 603/372-1050

NEW JERSEY

Component Technology ▼
Branchburg, NJ • 908/722-9100
www.citruss.com
goldman@citruss.com

Component Technology
Millville, NJ • 856/825-0300
www.citruss.com
jstolze@citruss.com

Concord Truss Company ▼
Woodbury Heights, NJ • 856/845-3848
www.concordtruss.com

DuBell Lumber ▼
Millville, NJ • 856/765-9300
www.dubell.com
ddimedio@dubell.com

GE Fabricators, Inc. ▼
Salem, NJ • 856/935-1830

ProBuild East ▼
Berlin, NJ • 856/767-3153
www.probuild.com
corey.temple@probuild.com

Tempex Corporation ♦
Sussex, NJ • 973/875-5500
www.tempex.com
tempex@earthlink.net

Universal Forest Products, Inc. - #349
Berlin, NJ • 856/767-0043
www.ufpi.com
customerservice@ufpi.com

Woodhaven Lumber
Lakewood, NJ • 732/901-0030
www.woodhavenlumber.com
info@woodhavenlumber.com

NEW MEXICO

Allied Structural Lumber Products, Inc.
Albuquerque, NM • 505/856-5244
www.asliabq.com
admin@asliabq.com

Alpine Lumber Co.
Farmington, NM • 505/327-9891
www.alpinelumber.com

Champion Truss Inc. ▼
Albuquerque, NM • 505/873-8787
www.championtruss.com
champion.truss@worldnet.att.net

Foxworth-Galbraith Truss Co.
Anthony, NM • 915/790-5900
ghall@foxgal.com

L & P Components
Las Cruces, NM • 505/373-8715
rmoreno@lpbuilding.com

Nixon Truss Co. Inc.
Portales, NM • 505/356-4976
www.nixontruss.com
harold@nixontruss.com

Pecos Valley Homes
Santa Fe, NM • 505/424-1141
cdouglass45@hotmail.com

Pine Lodge Truss, Inc.
Roswell, NM • 505/623-9500

ProBuild South ▼
Albuquerque, NM • 505/823-2700
www.probuild.com

Quality Truss ▼
Albuquerque, NM • 505/480-4778
qualitybldg@comcast.net

Stock Components-Albuquerque ▼
Albuquerque, NM • 505/877-0770
www.stocksupply.com

NEW YORK

Barden Homes
Middleport, NY • 716/735-3732
www.bardenhomes.com
charliekinne@bardenhomes.com

Barden Homes ▼
Tully, NY • 315/295-2800
www.bardenhomes.com
shollister@bardenhomes.com

Empire Building Products & Distribution, LLC ▼
Syracuse, NY • 315/463-4557

Fabco - Tontarski, Inc. ▼
Watertown, NY • 315/782-5283
fabcotrusses@aol.com

Mathews & Fields Lumber Co.
Henrietta, NY • 585/334-5500
www.mathewsandfieldslumber.com

Mid State Truss Co. Inc.
North Pitcher, NY • 315/653-7354
midstatetruss@frontiernet.net

Niagara Truss & Pallet LLC
Lockport, NY • 716/433-5400
joeprovencher@niagaratruss.com

PDJ Components, Inc. ▼
Chester, NY • 845/469-9191
www.pdjtruss.com
info@pdjtruss.com

Premium Building Components, Inc.
Queensbury, NY • 518/798-4009
johnb@choiceonemail.com

ProBuild East ▼
Kingston, NY • 845/339-3656
www.probuild.com

Quality Components ▼
Whitesboro, NY • 315/768-1167
www.qualitytrusses.com
info@qualitytrusses.com

Riverside Truss
Riparius, NY • 518/494-2412
www.riversidetruess.com
troblee@riversidetruess.com

Roll Lock Truss ▼
Waddington, NY • 315/388-4442
mjmcgee@cnyemail.com

Saratoga Lumber Traders, Inc.
Ballston Spa, NY • 518/885-0194
www.saratogalumbertraders.com
penny@saratogalumbertraders.com

Stock Building Supply, Inc.
Delanson, NY • 518/875-6111
www.stocksupply.com

Stock Components-Schenectady ▼
Schenectady, NY • 518/355-7190
www.stocksupply.com

T.C. Murphy Lumber Company, Inc.
Wevertown, NY • 518/251-2424
www.tcmurphy.com
tcmurphy@frontiernet.net

Triangle Building Products Corp. ▼
Medford, NY • 631/654-3500
www.trianglebp.com
kparker@trianglebp.com

Universal Forest Products, Inc.
Auburn, NY • 315/253-2758
www.ufpi.com
npeone@ufpi.com

Universal Forest Products, Inc.
Chaffee, NY • 716/496-5484
www.ufpi.com
sslowick@ufpi.com

Universal Forest Products, Inc.
Hudson, NY • 518/828-2888
www.ufpi.com
tsnyder@ufpi.com

Universal Forest Products, Inc.
Sidney, NY • 607/563-1556
www.ufpi.com
colem@ufpi.com

William B. Morse & Sons
Rochester, NY • 585/328-1400
kenth@morselbr.com

NORTH CAROLINA

84 Components ▼
Kings Mountain, NC • 704/937-3712
ignatowicz@84lumber.com

Andrews Truss, Inc. ▼
Andrews, NC • 828/321-3105
infoman@andrewstruss.com

Blue Ridge Building Components, Inc. ▼
Dana, NC • 828/685-0452
dan_hink@bellsouth.net

Builders FirstSource ▼
Apex, NC • 919/363-4956
www.buildersfirstsource.com
don.cernuto@buildersfirstsource.com

Builders FirstSource ▼
Asheville, NC • 828/252-2481

Builders FirstSource ▼
Fayetteville, NC • 910/485-1111
www.buildersfirstsource.com
pete.yeshulas@BuildersFirstSource.com

Builders FirstSource ▼
High Point, NC • 336/884-5466
www.buildersfirstsource.com
info@buildersfirstsource.com

Builders FirstSource-Charlotte ▼
Harrisburg, NC • 704/455-6444
www.buildersfirstsource.com

Carpenter Contractors of America, Inc. ▼
Fayetteville, NC • 910/875-7575
www.carpentercontractors.com
johnr@carpentercontractors.com

Comtech ▼
Fayetteville, NC • 910/864-8787
www.comtechfay.com
comtech@comtechfay.com

Deltec Homes, Inc. ▼
Asheville, NC • 828/253-0483
www.deltechomes.com
dhall@deltechomes.com

Eastern Building Components ▼
New Bern, NC • 252/638-6506
www.ebctruss.com
mail@ebctruss.com

Hash Building Components
Summerfield, NC • 336/215-4679

Hickory Truss & Component Co.
Hickory, NC • 828/328-2055
www.hickorytruss.com

High Level Components, LLC
Locust, NC • 704/888-0920
barney@highlevelcomponents.com

Household Building Systems, Inc.
Holly Springs, NC • 919/552-5933
www.hbstuss.com
hbstruss@mindspring.com

Longleaf Truss Company ▼
West End, NC • 910/673-1111
littlefredtlc@embarqmail.com

Orange Truss Company
Mebane, NC • 919/563-6550
clyde@orangetruss.com

Piedmont Components of Shelby LLC ▼
Shelby, NC • 704/482-0645
piedmontcomponents@yahoo.com

Precision Framing Systems, Inc.
Charlotte, NC • 704/588-6680
pzurawski@pfs1.biz

ProBuild East ✓ ▼
Albemarle, NC • 704/983-6748

Southeastern Materials, Inc. ▼ ◆
Albemarle, NC • 704/983-1144
www.southeasternmaterials.com
smaterials@semtruss.com

Stock Building Supply - Corporate Main Location ▼
Raleigh, NC • 919/431-1000
www.stocksupply.com
greg.griggs@stocksupply.com

Stock Components-Middlesex ✓
Middlesex, NC • 252/235-4530
www.stocksupply.com

Stock Components-Monroe ✓ ▼
Monroe, NC • 704/220-1300
www.stocksupply.com

Stock Components-Sanford
Sanford, NC • 919/718-0720
www.stocksupply.com

Superior Steel Components
Locust, NC • 704/888-2848
www.lgst.com

The Building Center Inc.
Charlotte, NC • 704/552-8182
pwyatt@thebuildingcenterinc.com

Tri-State Components ▼
Sparta, NC • 336/372-6260
jrmpm@skybest.com

Truline Truss, Inc. ▼
Sparta, NC • 336/372-2226
www.trulinetruss.com
truline@skybest.com

Truss Builders Inc.
Holly Ridge, NC • 910/329-3151

Truss Builders Inc.
Morrisville, NC • 919/467-9988
www.trussbuilders.com
Danny@trussbuilders.com

Truss Manufacturing Company ▼
Charlotte, NC • 704/527-8181
www.tlctruss.com
dwainp@tlctruss.com

Trussway, Ltd.
Clinton, NC • 910/299-5148

Truswood, Inc. ▼
Raleigh, NC • 919/787-8787
www.truswood.com
jlandon@truswood.com

Universal Forest Products, Inc. ▼
Burlington, NC • 336/226-9356
www.ufpi.com
customerservice@ufpi.com

Universal Forest Products, Inc.
Dallas, NC • 704/922-0027
www.ufpi.com
customerservice@ufpi.com

Universal Forest Products, Inc.
Liberty, NC • 800/476-9356
www.ufpi.com
customerservice@ufpi.com

NORTH DAKOTA

Advanced Truss Fabricators Inc.
Bismarck, ND • 701/663-2331
toster@advtruss.com

Fargo Truss Systems, Inc.
West Fargo, ND • 701/281-0871
twolf@fargotruss.com

Farroh Roof Truss Company, Inc.
Minot, ND • 701/852-1717
steve@trussmasters.com

Mid States Truss Co.
Fargo, ND • 701/237-3279
jbendel@midstatestruss.com

Northland Truss Systems, Inc. ▼
Abercrombie, ND • 701/553-9160
abernts@rrt.net

Northland Truss Systems, Inc. ▼
Fargo, ND • 701/282-4477
www.northlandtrussystems.com
fargonts@cablone.net

W.B. Components, LLC
Edgeley, ND • 701/493-2046

OHIO

Advantage Building Components ▼
North Jackson, OH • 330/538-9300
djones@advantage-components.com

Automated Building Components, Inc.
Dayton, OH • 937/837-4030
www.abctruss.com

Automated Building Components, Inc.
North Baltimore, OH • 419/257-2831

Automated Building Components, Inc.
North Baltimore, OH • 419/257-2152
www.abctruss.com
marshall@abctruss.com

Buckeye Components, LLC ▼
Columbiana, OH • 330/482-5320

Builders FirstSource ▼
Mason, OH • 513/398-1822
www.buildersfirstsource.com

Cardinal Truss & Components, Inc. ◆
Lockbourne, OH • 614/491-4924

Carter Components ▼
Kent, OH • 330/673-6100
www.carterlumber.com

Carter Components ▼
Millbury, OH • 419/836-1333
www.carterlumber.com

Carter Components ▼
Newton Falls, OH • 330/872-6474

Central Ohio Building Components
Newark, OH • 740/763-3000
cobc@core.com

Columbus Roof Trusses, Inc.
Columbus, OH • 614/272-6464
columbusrooftruss@voyager.net

Contract Building Components ▼
Marysville, OH • 937/644-0739
www.starktruss.com
jeff.coulter@starktruss.com

Contract Lumber Company
Pataskala, OH • 740/927-4242
www.contractlumber.com
tbieser@contractlumber.com

Custom Prefab Contractors
North Lima, OH • 330/549-3070
p_volosin@hotmail.com

Dealers Lumber Company
Columbus, OH • 614/252-2123
www.dealerslumber.com
johnmontgo@aol.com

Halsey-Myers Wood Products, Inc. ▼
Middletown, OH • 513/423-4601
roco_todd@hotmail.com

Hostetler Metal & Truss
Walhonding, OH • 740/427-9239
hmt@hostetlerturss.com

Innovative Panel Systems
Marion, OH • 614/361-9807
charles-lipscomb@brightchoice.net

Little Cottage Co.
Berlin, OH • 330/893-4212
cottaged@wifi7.com

Logan Truss Co.
Logan, OH • 740/380-9832
Logantruss@hocking.net

Lumbercraft ✓
Columbus, OH • 614/833-6655

McCabe Lumber ▼
Loveland, OH • 513/683-2662
www.mccabelumber.com
sales@mccabelumber.com

Norco
Lebanon, OH • 513/932-5700
www.norwoodsds.com
timh@norwoodsds.com

ProBuild North ✓ ▼
Delaware, OH • 740/549-0465
www.probuild.com

Riemeier Structural Solutions ▼
Shandon, OH • 513/738-3633

Rindler Truss, LTD ▼
Saint Henry, OH • 419/375-4095
www.rindlertruss.com
info@rindlertruss.com

Schilling Truss Incorporated
Beverly, OH • 740/984-2396
www.schillingtruss.com
Strussguy@aol.com

Smoky Engineered Products, LLC
Cincinnati, OH • 513/563-1111
www.nisbetbrower.com
rodneym.bays@nisbetbrower.com

Southeast Ohio Truss
Gallipolis, OH • 740/446-2002
www.thomas.doitbest.com
2geneelliott@charter.net

Stark Forest Products ▼
Canton, OH • 330/478-6063
www.starktruss.com
forest@starktruss.com

Stark Truss Company, Inc. ▼
Canton, OH • 330/478-2100
www.starktruss.com
steve.yoder@starktruss.com

Stark Truss Company, Inc. ✓ ▼
Canton, OH • 330/478-2181
www.starktruss.com
don.grey@starktruss.com

Stark Truss Company, Inc. ✓ ▼
Edgerton, OH • 419/298-3777
www.starktruss.com
duane.miller@starktruss.com

Stark Truss Company, Inc.
New Philadelphia, OH • 330/339-5000
www.starktruss.com
doug.wolf@starktruss.com

Stark Truss Company, Inc. ✓ ▼
Washington Court House, OH • 740/335-4156
www.starktruss.com
jeff.coulter@starktruss.com

Sterling Building Systems
Paulding, OH
www.SterlingBldg.com

Sterling Building Systems
Waverly, OH
www.SterlingBldg.com

Timmerman Truss, Inc. ▼
Greenville, OH • 937/548-3060
www.timmermantruss.com
sales@timmermantruss.com

Trusco, Inc. ▼
Doylestown, OH • 330/658-2027
www.trusscoinc.com
doylestown@trusscoinc.com

Universal Forest Products, Inc.
Blanchester, OH • 937/783-2443

Universal Forest Products, Inc. ▼
Lodi, OH • 330/948-4220
www.ufpi.com
customerservice@ufpi.com

Warren County Lumber and Truss ◆
Lebanon, OH • 513/932-9663
www.warrendoodwood.com
wclt@warrendoodwood.com

Wausau Homes, Inc.
Paulding, OH
www.WausauHomes.com

Wausau Homes, Inc.
Waverly, OH • 740/947-2529
www.WausauHomes.com
pricem@wausauhomes.com

Waynedale Truss & Panel Co.
Apple Creek, OH • 330/698-7373
www.waynedaletruss.com
jeremy@waynedaletruss.com

WEB Truss Company ▼
Plain City, OH • 614/873-9782

Whitewater Building Products, Inc.
Harrison, OH • 513/202-9400
www.wwbpi.com
lcartmell@wbipi.com

OKLAHOMA

Ardmore Construction
Ardmore, OK • 580/223-2322
truss@brightok.net

En-Fab Corporation
Broken Arrow, OK • 918/251-9647
enfab@tulsacoxmail.com

Higgins & Sons Roof Truss Co.
Tecumseh, OK • 405/997-5455
www.higginsandsons.com
rooftruss@higginsandsons.com

Mid-America Lumber Inc.
Lawton, OK • 580/353-3828
www.midamericallumber.com
twsmith@midamericallumber.com

Newell Wood Products
Muskogee, OK • 918/686-8060
www.nwonline.com
webmail@nwonline.com

Pryor Truss Company
Pryor, OK • 918/825-1715
charlie@pryortruss.com

Texhoma Truss Systems, Inc.
Durant, OK • 580/924-6798
texomatruss@sbcglobal.net

OREGON

American Truss & Manufacturing
Tillamook, OR • 503/842-1042
www.americantrussmfg.com
trusses@oregontruss.com

BJ's Metal & Lumber Products
Coos Bay, OR • 503/399-1432

Blazer Industries, Inc.
Aumsville, OR • 503/749-1900
www.blazerind.com
rock@blazerind.com

Clearspan Truss, Inc. ▼
Independence, OR • 503/838-6869

Grants Pass Truss ▼
Murphy, OR • 541/862-7207
bill@grantspasstruss.com

Miller Trusses
La Grande, OR • 541/963-2613
ace1@eoni.com

Northwest Structural Components LLC
Portland, OR • 971/322-2900

Oregon Truss ✓ ▼
Salem, OR • 503/581-8787
www.oregontruss.com
info@oregontruss.com

Precision Truss & Lumber, Inc.
Clackamas, OR • 503/656-2983
www.precisionrooftrusses.com

ProBuild West ✓ ▼
Clackamas, OR • 503/357-2178
www.probuild.com

ProBuild West ▼
Coos Bay, OR • 541/269-5988
www.probuild.com

ProBuild West ✓ ▼
Klamath Falls, OR • 541/884-3144
www.probuild.com
klamathfalls@lumbermens.net

Quality Truss ▼
Redmond, OR • 541/923-2759
qtruss@qtruss.com

The Truss Company & Building Supply
Eugene, OR • 541/688-8671
www.thetrussco.com
truss@thetrussco.com

Truss Components of Oregon, Inc.
Cornelius, OR • 503/357-2118
www.trusscomponents.com
brendah@trusscomponents.net

Truss Technology
Salem, OR • 503/390-2700
www.trusstechology.com
doug@trusstechology.com

Universal Forest Products, Inc.
Woodburn, OR • 503/226-6240
www.ufpi.com
customerservice@ufpi.com

PENNSYLVANIA

84 Components ✓
Coal Center, PA • 724/938-6002
andrewsd@84lumber.com

84 Components
Eighty Four, PA • 724/228-8820
otk@84lumber.com

84 Components ✓
Pottstown, PA • 888/456-8491
heilmanj@84lumber.com

84 Components
Waynesboro, PA • 304/582-7991

84 Lumber Company
Eighty Four, PA • 724/228-8820
www.84lumber.com

Allensville Planing Mill Inc. ✓ ▼
Allensville, PA • 717/483-6386
www.apm-inc.net
mfg@apm-inc.net

B.T. Truss Systems, Inc.
Blandon, PA • 610/944-9429
www.btruss.com
sales@btruss.com

Babcock Lumber Company
Pittsburgh, PA • 800/321-6163
www.babcocklumber.com
knichols@rtol.net

Berks Products Corporation ✓
Wyomissing, PA • 610/374-5131

Builders Support & Supply Inc ▼
Erie, PA • 814/454-9663
www.builderssupport.com
info@builderssupport.com

Carter Components - Center 18-1
Atlasburg, PA • 724/947-2281
www.carterlumber.com

Cuswago Truss LLC ▼
Cambridge Springs, PA • 814/763-3229

D L Truss L.L.C.
New Holland, PA • 717/355-9813

Eckman Building Components ✓ ▼ ▲
Lehighton, PA • 610/377-2460
www.eckmanbc.com
dmerkel@eckmanbc.com

Fairman's Roof Trusses Inc.
Creekside, PA • 724/349-6778
dkfairman@fairmanstrusses.com

Foremost Industries, Inc.
Greencastle, PA • 717/597-7166
www.foremosthomes.com
foremost@innernet.net

Forest Homes
Selinsgrove, PA • 570/374-0131
www.foresthomes.com
mweber@LRC-Homes.com

H P Starr Lumber ▼
Valencia, PA • 724/898-1501

Hills Creek Truss Company
Blossburg, PA • 570/638-2164
hillscreektruss@epix.net

Keystone Truss & Manufacturing ▼
Beech Creek, PA • 570/962-2129
www.ybconline.com
emiller@bcmfg.com

Lehigh Valley Truss, Inc.
Bethlehem, PA • 610/317-2600
sales@LVTruss.com

Lezzer Lumber
Curwensville, PA • 814/236-0220

Lezzer Truss Systems -- York ▼
York, PA • 717/268-8900
www.lezzerlumber.com
johnhoyd@lezzer.com

Lezzer Truss Systems, Inc. ✓ ▼
Curwensville, PA • 814/236-0975
www.lezzerlumber.com
johnloyd@lezzer.com

Loc Inc.
Erie, PA • 814/833-7734
www.locinc1.com

Montgomery Truss & Panel, Inc. ▼
Grove City, PA • 724/458-7500
www.montgomerytruss.com
truss@montgomery.com

Northeast Building Systems, Inc.
Birdsboro, PA • 610/898-1122
www.nesystems.net
kterry@nesystems.net

O.C. Cluss Truss ▼
Smithton, PA • 724/872-4120
kdeving@occluss.com

Pioneer Pole Buildings, Inc.
Schuylkill Haven, PA • 888/448-2505
www.pioneerpolebuildings.com
bobg@pioneerpolebuildings.com

Pocono Truss, Inc.
Stroudsburg, PA • 570/421-4077
poconotruss@chilitech.net

ProBuild East ✓
Morrisville, PA • 215/295-8074
www.probuild.com

R & R Components, Inc. ▼
York, PA • 717/792-4641
www.rcomponents.com
truss@rcomponents.com

Rigidply Rafter, Inc.
Richland, PA • 717/866-6581
www.rigidply.com
timriegel@rigidply.com

Salem Millwork & Truss, Inc. ▼
Delmont, PA • 724/468-5701
toddsalem@alltell.net

Shelly Enterprises, Inc. ▼
Telford, PA • 215/723-5108

H. M. Stauffer & Sons, Inc. ▼
Leola, PA • 717/656-2811
www.hmstauffer.com
components@hmstauffer.com

Stock Components-Paradise ✓
Paradise, PA • 717/768-8244
www.stocksupply.com

Toll Integrated Systems, Inc.
Fairless Hills, PA • 215/428-6944

Toll Integrated Systems, Inc. ▼
Morrisville, PA • 215/736-0111

Truss Tech, Inc. ▼
Mifflin, PA • 717/436-9778
www.trusstech.ws
randy@trusstech.ws

Universal Forest Products, Inc.
Emlenton, PA • 724/867-1100
www.ufpi.com
customerservice@ufpi.com

Universal Forest Products, Inc. ▼
Parker, PA • 724/399-2992
customerservice@ufpi.com

Wood Fabricators, Inc.
Quarryville, PA • 717/284-4849
woodfab17566@peoplepc.com

York P-B Truss, Inc.
York, PA • 717/779-0327
www.yorkpbtruss.com
info@yorkpbtruss.com

RHODE ISLAND

Trussco, Inc. ▼
North Kingstown, RI • 401/295-0669
www.trussus.com
info@trussus.com

SOUTH CAROLINA

Atlantic Building Components & Services, Inc.
Easley, SC • 864/859-9425

Atlantic Building Components & Services, Inc. ▼
Moncks Corner, SC • 843/565-3999
www.atlanticbcs.com
jbroachjr@atlanticbcs.com

Builders FirstSource ▼
Cowpens, SC • 864/463-1631
www.buildersfirstsource.com
Richard.Gaylord@buildersfirstsource.com

Builders FirstSource
Greenville, SC • 864/269-8110
www.buildersfirstsource.com
dustin.stouffer@BuildersFirstSource.com

Builders FirstSource
Loris, SC • 843/756-6400
www.buildersfirstsource.com
ty.norris@bldr.com

Builders FirstSource - Shaw, Inc. ▼
Sumter, SC • 803/778-1921
www.buildersfirstsource.com

Load Star / Evergreen Plant ▼
Effingham, SC • 843/676-0343
www.harbinlumber.com
truss.ecsfo@mindspring.com

LRC Ridgeland, LLC
Ridgeland, SC • 843/717-9531
kgrossman@foresthomes.com

Metrolina Truss Manufacturing Corp. ▼
Lancaster, SC • 803/416-5139

Precision Roof Truss ▼
Duncan, SC • 864/486-8770
www.precisionrooftruss.com
tryge@precisionrooftruss.com

ProBuild East ✓ ▼
Nichols, SC • 843/526-1517
www.probuild.com

Quality Woodtruss, Inc.
Newberry, SC • 803/276-1112
www.qualitywoodtruss.com
tommyb@qualitywoodtruss.com

Stark Truss Company, Inc. ✓ ▼
Summerville, SC • 843/875-0550
www.starktruss.com
sales@carolinatruss.com

Stock Components-Gaston ✓ ▼
Gaston, SC • 803/796-9150
www.stocksupply.com

Universal Forest Products, Inc.
Conway, SC • 843/248-0123
www.ufpi.com
customerservice@ufpi.com

SOUTH DAKOTA

Black Hills Truss & Component, LLC ▼
Rapid City, SD • 605/721-1118
amandambhtc@rushmore.com

Component Manufacturing Company ▼
Sioux Falls, SD • 605/339-3647
www.reavesbuildings.com

Dakota Craft, Inc. ✓ ▼ ▲ ✨ ✨ ✨ ✨
Rapid City, SD • 605/341-6100
www.dakotacraft.com
dakotacraft@dakotacraft.com

Dakota Craft, Inc. Wall Panel Plant ✓ ▼
Rapid City, SD • 605/341-6100
www.dakotacraft.com

Engineered Truss Systems
Sioux Falls, SD • 605/334-0350
www.engineeredtrussystems.com
ets@svtv.com

Mayfield Truss LLC
Willow Lake, SD • 605/625-3314
www.mayfieldtruss.com
kentn@mayfieldtruss.com

ProBuild North ✓ ▼
Mitchell, SD • 605/996-0668
www.probuild.com
mitchell.truss@timberroots.com

Superior Truss Systems LLC
Belle Fourche, SD • 605/723-1300

Truss-Pro's Inc. ▼
Britton, SD • 605/448-5971
www.truss-pros.com
trusspros@trusspros.com

TENNESSEE

84 Components
Knoxville, TN • 865/539-1484
nelsond@84lumber.com

84 Components ✓
La Vergne, TN • 615/287-0184
morrisd@84lumber.com

84 Components
Murfreesboro, TN • 615/849-3777

Anderson Truss Company
Alcoa, TN • 865/983-9485
andersonstruss@bellsouth.net

Automated Building Systems, Inc.
Johnson City, TN • 423/926-2158
www.automatedbuildingsystems.net
abs@planetec.com

Builders FirstSource ▼
Piney Flats, TN • 423/538-8102
www.buildersfirstsource.com

C & C Custom Trusses
McKenzie, TN •

Duncan Lumber, Inc.
New Tazewell, TN • 423/626-7225
dtruss.jim@centurytel.net

Eagle Truss LLC
Collinwood, TN • 931/724-5161
eagletruss@tds.net

Hiwassee Builders Supply Inc.
Athens, TN • 423/745-4704
www.hiwasseebuilderssupply.com
dbeaty1025@bellsouth.net

Huskey Truss & Building Supply ▼
Franklin, TN • 615/791-0100
www.huskeytruss.com
wbutters@huskeytruss.com

Kilby Truss, Inc. ▼
Kingsport, TN • 423/239-9091
kilbyinc@aol.com

McGuffin Truss & Components, Inc. ▼
Morristown, TN • 423/581-7495
info@mcguffintruss.com

Norvell & Wallace Lumber Co. ▼
Nashville, TN • 615/350-8703
www.norvellwallace.com
khnorvellwallace@aol.com

Orgain Components ▼
Clarksville, TN • 931/645-3324
www.orgainbldg.com
orgaintruss@earthlink.net

Raney Truss
Decaturville, TN • 731/852-2552

Raney Truss Nashville
Nashville, TN • 615/673-2676
www.raneytruss.com
raneytruss@mail.com

Rogers Manufacturing Corporation ▼
Ashland City, TN • 615/792-8722
www.rogersmfg.com

Sterling Building Systems
Lawrenceburg, TN • www.SterlingBldg.com

Stewart Truss, LLC ▼ ◆
Fairview, TN • 615/799-8787
www.stewartlumber.com/stewart_truss.html
stewart.truss@stewartlumber.com

The CS Truss Company, Inc.
Sweetwater, TN • 423/337-7270
chris@tellico.net

The Wakefield Corporation ◆
Knoxville, TN • 865/675-1550
www.summitpanels.com
tgerringer@thewakefieldcorp.com

Tindell's, Inc. ✓ ▼
Knoxville, TN • 865/691-6505
www.tindells.com
steveb@tindells.com

Tri-State Truss Company, Inc. ▼
Cleveland, TN • 423/472-3389
mellis@tristatetruss.com

Wausau Homes, Inc.
Lawrenceburg, TN
www.WausauHomes.com

Witt Building Material Company, Inc.
Knoxville, TN • 865/588-5331
www.wittbuilding.com
lanz02@iol24.com

TEXAS

All Pan, Ltd. ▼
Houston, TX • 713/434-8343
www.allpan.com

Allied Truss
Bullard, TX • 903/586-1982
www.alliedtruss.com
allied@nctv.com

American Pole & Timber Co
Houston, TX • 866/397-3038
www.poleandtimber.com
eric@poleandtimber.com

American Truss Systems, Inc. ▼
Houston, TX • 281/442-4584
www.americantrussystems.com
jdermer1@aol.com

Associated Truss & Lumber Company ▼
Mesquite, TX • 972/226-1973
www.associatedtruss.com
trussales@associatedtruss.com

Bayou City Truss Inc.
Houston, TX • 281/460-5898
gregdermer2002@aol.com

BMC West Corporation
Abilene, TX • 325/698-4465
www.bmcwest.com
white@bmcwest.com

BMC West Corporation ▼
El Paso, TX • 915/821-8333
www.bmcwest.com

BMC West Corporation ▼
Frisco, TX • 972/335-2999
www.bmcwest.com
paterson@bmcwest.com

BMC West Corporation ✓ ▼
New Braunfels, TX • 830/606-7400
www.bmcwest.com
gonzales@bmcwest.com

Buffalo Framing and Truss, L.P. ▼
Pflugerville, TX • 512/670-2300
www.buffaloframing.com
gilbert.loreto@buffaloframing.com

Builders FirstSource ▼
Dallas, TX • 214/880-3500
www.buildersfirstsource.com
info@buildersfirstsource.com

Builders FirstSource ▼
Lewisville, TX • 972/221-7632
www.buildersfirstsource.com
Victor.Rojas@buildersfirstsource.com

Builders FirstSource ▼
San Antonio, TX • 210/698-0914

Custom Homeworks, Ltd.
Houston, TX • 713/532-8115
customhomeworks@sbcglobal.net

El Paso Truss Inc.
El Paso, TX • 915/751-0025
casey@empiretruss.com

Empire Truss LTD.
Huntsville, TX • 936/295-0189
empiretruss@totalzone.com

Fort Worth Lumber Company
Fort Worth, TX • 817/293-5211
www.fortworthlumber.com
fwlctruss@yahoo.com

Foxworth-Galbraith Lumber Company
Dallas, TX • 972/437-6100
www.foxgal.com

Foxworth-Galbraith Truss
San Antonio, TX • 210/662-7575
jflores@foxgal.com

Foxworth-Galbraith Truss Co - Van Alstyne ▼
Van Alstyne, TX • 903/482-5040
www.foxgal.com
lsmith@foxgal.com

FrameTek Inc
Houston, TX • 713/974-0183
www.gbllc.com

Hart Components ◆
San Antonio, TX • 210/337-6474
www.hartcomponents.com
frame@hartcomponents.com

JCI Building Materials & Framing
San Antonio, TX • 210/310-0023
jcpanels@swbell.net

Lampasas Building Components of Texas ▼
Lampasas, TX • 512/556-2180
lbcctruss@sbcglobal.net

Lockhart Truss Company ▼
Lockhart, TX • 512/398-5300
www.satruss.com
satruss@sbcglobal.net

Lone Star Truss, LLC
Mabank, TX • 903/887-3196

Longhorn Truss LLC ▼
Lott, TX • 254/584-2469
ctroy@afo.net

Loredo Truss Company, Inc. ▼
Austin, TX • 512/926-9518
www.loredotruss.com
sonny@loredotruss.com

MG Building Materials Ltd. ▼
San Antonio, TX • 210/623-4770

MG Building Materials Truss Division ▼
San Antonio, TX • 210/798-0650
casey@mgtruss.com

N. B. Roof and Floor Trusses
Gatesville, TX • 254/865-7556
www.nbrtruss.com
jason@nbrtruss.com

Noltex Truss
Big Spring, TX • 432/267-4700
noltextruss@gmail.com

North Texas Truss
Littlefield, TX • 806/385-5533
www.northtexasruss.com
northtexasruss@aol.com

NT Truss & Components, LP
Arlington, TX • 817/633-0330

Panel Truss Texas, Inc. ▼
Henderson, TX • 903/657-7000
www.paneltruss.com
donnie@paneltruss.com

Precision Structural Components
Houston, TX • 713/569-9009

ProBuild South ✓ ▼
Mercedes, TX • 956/755-0303
www.probuild.com
jgarcia@hopelumber.com

ProBuild South Austin Truss ✓ ▼
Buda, TX • 512/295-2401

ProBuild South DFW Truss ✓ ▼
Carrollton, TX • 972/245-8531
www.ctxbs.com
info@ctxbs.com

Pro-Tech Manufacturing, Inc. ▼
Schertz, TX • 210/651-5888

R J Konstruktion Turnkey Framing Systems
Lubbock, TX • 806/747-7826
www.rjkonstruktion.com

R. E. Sweeney Company, Inc. ▼
Fort Worth, TX • 817/834-7191
degrootd@swbell.net

Rio Truss, L.P.
McAllen, TX • 956/682-9822
riotruss@sc2000.net

Rogers Manufacturing Corporation
Bedford, TX • 817/540-6400
www.rogersmfg.com
bryan@rogersmfg.com

Rogers Manufacturing Corporation
Houston, TX • 713/780-3449

San Antonio Truss Co, Inc.
San Antonio, TX • 210/736-9629
www.satruss.com
satruss@sbcglobal.net

South Texas Truss Co. LLC
Los Fresnos, TX • 956/982-0744
lftcfbk@aol.com

STACC -- Scholl Truss and Component Company ✓ ▼
Houston, TX • 713/690-7888
www.scholltacc.com

Stark Truss Company, Inc. ▼
Hearne, TX • 979/477-6676
www.starktruss.com
tim.willett@starktruss.com

Stark Truss Company, Inc. ▼
Sherman, TX • 903/893-5329
www.starktruss.com

Stock Components-Austin ✓ ▼
Austin, TX • 512/444-3172
www.stocksupply.com
ron.kallas@stocksupply.com

Structural Wood Components
Magnolia, TX • 281/259-0668
www.structuralwoodcomponents.com
ckott@structuralwoodcomponents.com

Textruss Component Building, Inc.
Austin, TX • 512/836-4830
www.textruss.com
doyle.b@sbcglobal.net

Timber Tech Texas, Inc. ▼
Cibolo, TX • 210/658-7057
www.timbertechtexas.com
gweaver@timbertechtexas.com

Titan Truss Co
Brookshire, TX • 281/375-7400
broadway@evi.net

Trimco
El Paso, TX • 915/855-8501
josephtrimco@aol.com

TrussMate, Inc. ▼
Liberty Hill, TX • 512/515-5970
www.trussmate.com

Trussway, Ltd. - Southwest Division ▼
Houston, TX • 713/691-6900
www.trussway.com

Trussway, Ltd. - Western Division ▼
Fort Worth, TX • 817/589-1467

Universal Forest Products - #299
New Waverly, TX • 936/295-3411
www.ufpi.com
pbenton@ufpi.com

Universal Forest Products, Inc. - #270
Burlleson, TX • 817/447-1000
www.ufpi.com
rsmith@ufpi.com

Universal Forest Products, Inc. - #272
San Antonio, TX • 210/655-6053
www.ufpi.com
dhutton@ufpi.com

Universal Forest Products, Inc. - #343
Houston, TX • 281/829-5716
www.ufpi.com
customerservice@ufpi.com

Universal Forest Products, Inc. - #350
Dallas, TX • 972/880-3099
www.ufpi.com
pbenton@ufpi.com

Zarsky Lumber ▼
Victoria, TX • 361/573-2479
www.zarsky.com

Zarsky Lumber Co., Inc. ▼
McAllen, TX • 956/630-4275
www.zarsky.com
phillip@zarsky.com

UTAH

Aspen Components, Inc. ▼
Cedar City, UT • 435/867-5852
aspen@infowest.com

Automated Structures Inc. ▼
Ogden, UT • 801/732-9300

BMC West Corporation - Salt Lake Truss ▼
West Jordan, UT • 801/565-3500
www.bmcwest.com

Burton Lumber and Hardware Co.
Salt Lake City, UT • 801/952-3800
www.burtonlumber.com
debbiel@burtonlumber.com

Dixie Component Systems, Inc.
Saint George, UT • 435/628-3649

ProBuild North ✓ ▼
Salt Lake City, UT • 801/433-4400
www.probuild.com

Standard Builders Supply, Inc. ▼
Salt Lake City, UT • 801/487-7731
www.standardbuilders.net
kevinh@standardbuilders.net

Stock Components-Salt Lake City ✓ ▼
Salt Lake City, UT • 801/973-7020
www.stocksupply.com

Stock Components-St. George ✓ ▼
St George, UT • 435/652-0708
www.stocksupply.com

Truss Plant, LLC
Salt Lake City, UT • 801/972-0090
www.trussplant.net
don@trussplant.net

VIRGINIA

84 Components ▼
Newport News, VA • 757/746-0358
kahnd@verizon.net

Allied Systems/Annandale Millwork ✓
Winchester, VA • 540/665-9600
www.amcasc.com
rfrogale@amcasc.com

Berry Truss & Component Shop, Inc.
Chilhowie, VA • 276/646-5333
www.berryhomecenter.com

Better Living Components, Inc.
Charlottesville, VA • 434/978-1666
truss@btrlvg.com

Blue Ridge Truss & Supply, Inc. ▼
Basye, VA • 540/856-2191
www.blueridgetruss.com
kevinlear@blueridgetruss.com

Builders FirstSource - Culpeper Truss ▼
Elkwood, VA • 540/727-8801
www.buildersfirstsource.com

Builders Supply Co. of Petersburg Inc.
Petersburg, VA • 804/732-4820

Central Valley Truss, Inc.
Fulks Run, VA • 540/896-3803
peery2@shentel.net

Chesapeake Structural Systems ▼
Charles City, VA • 804/966-8340
CHESTRUC@aol.com

Dominion Truss ▼
Abingdon, VA • 276/466-8787
www.dominiontruss.com
sales@dominiontruss.com

Glaize Components ✓
La Crosse, VA • 434/757-1234
www.glaize.net

Glaize Components ✓
Winchester, VA • 540/665-0078
www.glaize.net
scampbell@glaize.net

Homestead Building Systems, Inc.
Bristow, VA • 703/331-5600
dave.baird@homesteadbuildingsystems.com

Metwood Building Solutions ◆
Boones Mill, VA • 540/334-4294
www.metwood.com
information@metwood.com

Panel Systems, Inc. ◆
Lorton, VA • 703/550-1466
www.psiincusa.com
info@psiincusa.com

ProBuild East ✓ ▼
Danville, VA • 434/793-0217
www.probuild.com
Ann.McDaniel@Strober.com

ProBuild East ✓ ▼
West Point, VA • 804/843-3203
www.probuild.com

Roper Brothers Lumber Company / Component Division ▼
Newport News, VA • 757/595-4920
www.ropelumber.com
jriffe@ropelumber.com

Ruffin & Payne Incorporated
Richmond, VA • 804/329-2691

Skyline Building Systems LLC ✓
Harrisonburg, VA • 540/434-9497
www.skylinetruss.com
jmckinney@skylinetruss.com

Stark Truss Company, Inc. ▼
Doswell, VA • 804/876-3087
www.starktruss.com
courtney.erb@starktruss.com

Sterling Building Systems
South Hill, VA •
www.SterlingBldg.com

Stock Building Supply
Newport News, VA • 757/875-1850

Stock Building Supply, Inc. ▼
Powhatan, VA • 804/594-1870

Structural Technologies LLC ▼
Doswell, VA • 888/616-0615

Toll Integrated Systems, Inc.
Emporia, VA • 434/634-8888
www.tollbrothers.com
cjohnson@tollbrothersinc.com

Truss Tech Inc. ▼
Melfa, VA • 757/787-3014
bookkeeper@trusstech.net

Trussway, Ltd. - Eastern Division ▼
Fredericksburg, VA • 540/898-3477

Truswood, Inc. ▼
Newport News, VA • 757/833-5300
lmims@truswood.com

Truswood, Inc.
South Hill, VA • 804/447-6565
kroberts@truswood.com

Universal Forest Products, Inc.
Chesapeake, VA • 757/485-3190
www.ufpi.com
customerservice@ufpi.com

Universal Forest Products, Inc.
Pearisburg, VA • 540/921-1286
www.ufpi.com
customerservice@ufpi.com

Wausau Homes, Inc.
South Hill, VA • 434/955-2040
www.WausauHomes.com

WASHINGTON

A & B Trusses ▼
Salkum, WA • 630/985-0083
YourTrussCompany@gmail.com

Armstrong Lumber Co. Inc.
Auburn, WA • 253/833-6666
www.armstrong-homes.com
krisr@armstrong-homes.com

BMC West Corporation ▼
Everett, WA • 425/303-0661
www.bmcwest.com

BMC West Corporation ▼
Tacoma, WA • 253/582-1444
www.bmcwest.com
gallagher@bmcwest.com

Elkhorn Truss, L.L.C. ▼
Chinook, WA • 360/777-8084
www.elkhorntruss.com
ahughes@elkhorntruss.com

Epic Truss Systems Ltd. ▼
Sumas, WA • 604/850-3522
www.epictruss.com
info@epictruss.com

Evergreen Truss & Supply ▼
Deer Park, WA • 509/276-5088
www.e-truss.net
evergreen@e-truss.net

Evergreen Truss Company, Inc.
Vancouver, WA • 360/256-2300
evergreentrussco@yahoo.com

Louws Truss, Inc. ▼
Ferndale, WA • 360/384-9000
www.louwstruss.com
sales@louwstruss.com

Marson & Marson Lumber, Inc.
Leavenworth, WA • 509/548-5829
www.marsonandmarson.com
ken@marsonandmarson.com

Northwest Truss
Pasco, WA • 509/545-9003
nwtruss@bentonrea.com

Oso Lumber and Hardware, Truss Division ▼
Arlington, WA • 360/435-8397
www.osolumber.com
reubencook@osolumber.com

Oso Lumber Kent Location
Kent, WA • 253/872-0184
www.osolumber.com
josephsuperfisky@osolumber.com

Oso Truss Company
Darrington, WA • 360/436-2115
www.osolumber.com

Pacific Panel and Steel Truss, Inc. ◆
Vancouver, WA • 360/213-1600
www.pacificpanelsteeltruss.com
info@pacificpanelsteeltruss.com

ProBuild West ▼
Arlington, WA • 360/403-9310
www.probuild.com

ProBuild West ▼
Spokane Valley, WA • 509/924-2420
www.probuild.com

ProBuild West ▼
Walla Walla, WA • 509/525-4000
www.probuild.com

ProBuild West ▼
West Richland, WA • 509/627-0288
www.probuild.com

ProBuild West - Auburn Truss Division ▼
Auburn, WA • 253/833-1050
www.probuild.com

Roof Truss Supply, Inc.
Woodinville, WA • 425/481-0900

Structural Components, Inc.
Yakima, WA • 509/457-8530
strcomp@nwinfo.net

Tacoma Truss Systems, Inc.
Spanaway, WA • 253/847-2204
www.tacomatruss.com
mike@tacomatruss.com

Tectonix
Olympia, WA • 360/943-5433
tectonix@tectonix.com

The Truss Company & Building Supply ▼
Sumner, WA • 253/863-5555
www.thetrussco.com
cliff@thetrussco.com

Tri-County Truss, Inc. ▼ ◆
Burlington, WA • 360/757-8500
www.tricountytruss.com

Truss Components of Washington
Tumwater, WA • 360/753-0057
www.trusscomponents.com
chad@trusscomponents.com

Trussworks, LLC
Bothell, WA • 425/483-8787
www.trussworksllc.com
brians@trussworksllc.com

Trus-Way of Tri-Cities, Inc. ▼
Vancouver, WA • 509/543-7594
www.trus-way.com
marks@trusway.com

Trus-Way, Inc. ▼
Vancouver, WA • 360/750-1470
www.trus-way.com
marks@trusway.com

Tru-Truss, Inc.
Lacey, WA • 360/491-8024
www.trustruss.com
sales@trustruss.com

VanderPol Building Components, Inc.
Lynden, WA • 360/354-5883
www.vanderpol.com
sales@vanderpol.com

Woodinville Lumber & Truss ▼
Woodinville, WA • 425/488-1818
www.woodinvillelumber.com

Woodinville Truss, Inc. ▼
Woodinville, WA • 425/483-4101
www.woodinvilletruss.com
woodtruss@msn.com

WEST VIRGINIA

Allensville Planing Mill Inc. ▼ ◆
Martinsburg, WV • 304/264-5900
www.apm-inc.net
mfg@apm-inc.net

Babcock Lumber Company; Truss Division
Glenville, WV • 304/462-8660
www.babcocklumber.com
blctrussales@rtol.net

Code Plus Components
Martinsburg, WV • 304/274-5700
cpctruss@hotmail.com

Universal Forest Products, Inc.
Ranson, WV • 800/488-8474
www.ufpi.com
cjoseph@ufpi.com

WISCONSIN

84 Components
McFarland, WI • 608/838-8488
brassfieldj@84lumber.com

Accurate Housing Systems ▼
East Troy, WI • 262/642-3800
www.accuratehousing.com
info@accuratehousing.com

Amwood Homes, Inc. ▼
Janesville, WI • 608/756-2989
www.amwoodhomes.com
amwood1@amwoodhomes.com

Automated Building Components, Inc. ▼ ◆
Chetek, WI • 715/924-4867
www.trussabc.com

Automated Products, Inc. ▼
Marshfield, WI • 715/387-3426
www.apiebs.com
customer.contact@apiebs.com

Beaver Builders Supply Inc. ▼
Holmen, WI • 608/526-3232
www.beaverbuilderssupply.com

Best-Built Construction Components ▼
Marshall, WI • 608/655-3455
www.bestbuiltconstructioncomponents.com
sales@besttrusses.com

Blenker Building Systems, Inc. ▼
Amherst, WI • 715/824-5665
www.blenkerco.com
jason.blenker@blenkerco.com

Braun Building Center
Manitowoc, WI • 920/682-0143
kneumann@braunbuilding.com

Brunsell Lumber & Millwork ▼ ◆
Mount Horeb, WI • 608/437-7183
www.brunselllumber.com
brunsellcomponent@brunsell.com

Custom Components of Eagle River Inc.
Eagle River, WI • 715/479-3348
gpscornerstone@verizon.net

K-Wood Truss Rafter, Inc. ▼
Grantsburg, WI • 715/689-2503
www.kwoodtruss.com
cynthia@kwoodtruss.com

Manion Truss and Components ▼ ◆
Superior, WI • 715/395-7890
mtci@centurytel.net

Nelson Truss, Inc. ▼
Edgerton, WI • 608/884-6141
www.nylumber.com
nelsontruss@nelsontruss.com

Precision Steel Trusses Inc ▼ ◆
West Salem, WI • 608/786-4545
www.precisionsteeltrusses.com
dpogreba@pstruss.com

ProBuild North ▼ ◆
Brownsville, WI • 920/269-4786
www.probuild.com
brownsville.wi@timberroots.com

ProBuild North ▼ ◆
De Pere, WI • 920/983-4200
www.probuild.com

ProBuild North ▼ ◆
Racine, WI • 262/632-8840
www.probuild.com

Richco Structures ▼ ◆
De Pere, WI • 920/336-9400
www.richcostr.com

Richco Structures ▼ ◆
Haven, WI • 920/565-3986
www.richcostr.com
mnett@richcostr.com

Riverstone, Inc.
Wausau, WI • 715/849-8899
riverstonesales@aimetisp.com

Select Trusses & Lumber
West Salem, WI • 608/786-2414
www.selecttrusses.com
Dpogreba@selecttrusses.com

Sterling Building Systems
Wausau, WI
www.SterlingBldg.com

Stock Components-Delavan ▼ ◆
Delavan, WI • 262/728-0110
www.stocksupply.com
malcolm.tisdale@stocklumber.com

Stock Components-Green Bay ▼ ◆
Green Bay, WI • 920/496-5094
www.stocksupply.com
bill.raymakers@stocksupply.com

Truss Systems, Inc. ▼
Little Chute, WI • 920/687-1100
www.trussystems.com
shwhalen@trussystems.com

Trussco ▼
Appleton, WI • 920/739-8199
info@trusscowis.com

Truss's Plus, Inc. ▼
Mayville, WI • 920/387-2524
gsteinbach@charter.net

Trussworks, Inc. ▼
Hayward, WI • 715/634-2000
www.trussworksinc.com

Universal Forest Products, Inc.
Janesville, WI • 608/755-6200

Valley Trusses, Inc.
Kaukauna, WI • 920/766-0601
valleytrusses@aol.com

Walters Buildings
Allenton, WI • 262/629-5521
www.waltersbuildings.com
waltersbuildings@waltersbuildings.com

Wausau Homes, Inc. ▼
Wausau, WI • 715/359-7272
www.WausauHomes.com
opatikf@wausauhomes.com

Windsor Building Systems ▼
Madison, WI • 608/241-2185
housing@windsorllc.net

Wisconsin Truss, Inc.
Cornell, WI • 715/239-6465
www.wisconsintruss.com
wistruss@wisconsintruss.com

WYOMING

Builders Fabrication & Supply Co., Inc.
Cheyenne, WY • 307/634-7480
trussladie@earthlink.net

Diamond Truss, LLC ▼
Ralston, WY • 307/754-3696
www.diamondtruss.com
gail@tctwest.net

Laramie Trusses
Laramie, WY • 307/745-0289
laramietrusses@yahoo.com

Teton Truss ▼
Etna, WY • 307/883-4943
neeb@tetontruss.com

Titan Truss ▼
Cody, WY • 307/587-2187
www.titantruss.com
jbrice@bloedornlumber.com

Truss Craft ▼ ◆ ◆
Cheyenne, WY • 307/635-1635
www.trusscraft.com
trusscraft@aol.com

AUSTRALIA

Bellbird Building Supplies
Melbourne, VIC • +61 3 9703 2444

BAHAMAS

Trussco, Ltd. ▼ ◆
Nassau • 242/361-7764
ggongora@coralwave.com

CANADA

A. Potvin Construction
Rockland, ON • 613/446-2203
www.potvinconst.com
guysimard@potvinconst.com

Adam Lumber, Inc. ▼
Waterloo, QC • 450/539-1858
kirk@adamgroup.com

AXL Lumber Ltd.
Calgary, AB • 403/287-2728
axl@telus.net

All-Fab Building Components (AB) Inc.
Acheson, AB • 780/962-4484
www.all-fab.com
edm@all-fab.com

All-Fab Building Components Inc.
Stony Mtn, MB • 204/344-5404
www.all-fab.com

All-Fab Building Components Inc. ▼
Winnipeg, MB • 204/661-8880
www.all-fab.com
winnipeg@all-fab.com

Clyvanor Ltd
St Georges, QC • 418/228-7690
www.clyvanor.com
info@clyvanor.com

Distribution Toiture Mauricienne Inc.
Trois-Rivieres, QC • 800/263-7265
www.toituremauricienne.com
robi@openjoist2000.com

Garden River Truss Co. ▼
Garden River, ON • 705/942-6774
grtc@xplornet.com

Kent Trusses Limited
Barrie, ON • 705/733-3414
www.kenttruss.com

Kent Trusses Limited ▼
Sundridge, ON • 705/384-5326
www.kenttruss.com

Leduc Truss Inc.
Leduc, AB • 780/986-0334
www.leductruss.com
admin@leductruss.com

Locke Truss Company Ltd ▼
Brockville, ON • 613/342-2388
www.locketruss.com
garyl@locketruss.com

Manu-fab Building Components, Ltd ▼
Newton, MB • 204/267-2112
www.manufab.ca
wbracken@manufab.ca

Millwork Truss Centre
Bowmanville, ON • 905/623-9500
gail@rushwood.ca

Nu-Fab Building Products
Saskatoon, SK • (306) 244-7119

Nu-Fab Building Products ▼
Regina, SK • (306) 721-8131

Pacific Truss
Cobble Hill, BC • 250/743-5584
www.pacificbuildingsystems.com
lorne.winship@pacificbuildingsystems.com

Penn-Truss Mfg. Inc.
Saltcoats, SK • 306/744-2403
www.penntruss.com
colin@penntruss.com

Phoenix Building Components ▼
Barrie, ON • 705/733-3843
www.phoenixbuilding.ca
jeffallan@phoenixbuilding.ca

Rockett Lumber
Mississauga, ON • 905/275-1800
www.rockettlumber.com
stephen_rockett@rockettlumber.com

Rockett Lumber East
Courtice, ON • 905/434-1900
www.rockettlumber.com
harry_sillen@rockettlumber.com

Rockett Lumber Fonthill
Fonthill, ON • 905/892-2641
www.rockettlumber.com
lisa.inaba@rockettlumber.com

Slegg Lumber - Building Components Div ▼
Sidney, BC • 250/656-9255
www.slegglumber.com
buildingcomponents@slegglumber.com

Soo Mill & Lumber Co. Ltd
Sault Ste Marie, ON • 705/759-0443
rpmacgil@soomill.com

St. Lawrence Structures Inc.
Cornwall, ON • 613/932-4413
yves@stlawrencestructures.ca

Startek Enterprises Ltd. ▼
Vulcan, AB • 403/485-6104
www.startekenterprises.com
art@startekenterprises.com

Structures Canatrus
Theftford Mines, QC • 418/338-2888
www.canatrus.com
info@canatrus.com

Structures RBR Inc ▼
Saints-Anges, QC • 418/253-5454

Tampa Hail LTD ✓
Ayr, ON • 519/632-7437
www.tamphail.com
tamphail@tamphail.com

Tandelle Truss
Ilderton, ON • 519/666-1360
abeberman@tandelletruss.com

Timberfield Roof Truss ✓
London, ON • 519/659-2711
www.timberfieldrooftruss.com
info@timberfieldrooftruss.com

Timber-Tech Truss Inc. ▼
Aldersyde, AB • 403/601-4565
www.timbertechtruss.com
wgdesign@platinum.ca

Timber-Tech Truss Inc.
Lethbridge, AB • 403/328-5499
www.timbertechtruss.com
kelly.skauge@timbertechtruss.com

Timber-Tech Truss Inc.
Medicine Hat, AB • 403/527-7840
www.timbertechtruss.com

TrueBeam Structures ▼
High Prairie, AB • 780/523-4110
www.truebeam.ca
dhowie@truebeam.ca

Truline Truss ▼
Creston, BC • 250/428-7416

Universal Forest Products, Inc.
Thorndale, ON • 519/461-1180
www.ufpi.com
customerservice@ufpi.com

Viceroy Homes
Richmond, BC • 604/274-8700
dmawer@viceroy.com

Viceroy Homes Limited
Port Hope, ON • 905/885-8600
bsimpson@viceroy.com

Vismas Inc
Toronto, ON

Watford Roof Truss Ltd.
Watford, ON • 519/876-2612
www.watfordtruss.on.ca
jeffb@watfordtruss.on.ca

West Coast Home & Truss Ltd
Surrey, BC • 604/580-3275
www.westcoasttruss.ca
gsdhesi@westcoasttruss.ca
kathypoulin@structuresrbr.ca

SBCA Membership Directory

Associate Members

As of February 17, 2009

Please note that SBCA Associate Members are categorized based on the classification notes on their membership application. In many cases, these companies provide more services than that classification indicates. For a detailed list of the services each company provides, please visit the member page of the SBCA website at www.sbcindustry.com/sbcasuppliers.

ARCHITECT

Burnett Architects
Sherman Oaks, CA • 818/784-1639
tburnett@earthlink.net

Gleason Architects, P.C. ◆
Sugar Grove, IL • 630/466-8740
thadgleason@gleasonarchitectspc.com

Robert C. Smelker Associates ✓
Honolulu, HI • 808/282-4998
rsc@hawaii.rr.com

ARCHITECTURAL SERVICES

Structural Core Design, LLC
New Berlin, WI • 414/305-0154
www.structuralcore.com
info@structuralcore.com

ASSOCIATION

American Forest & Paper Association
Washington, DC • 202/463-2766
www.awc.org
awcinfo@afandppa.org

American Institute of Timber Construction
Centennial, CO • 303/792-9559
www.aitc-glulam.org
info@aitc-glulam.org

American Institute of Building Design ◆
Washington, DC • 202/249-1405
www.aibd.org
steve.mickley@aidb.org

Association of Minnesota Building Officials
Fairmont, MN • 763/531-5122
www.ambo-icc.org
raxel@ci.new-hope.mn.us

Canadian Wood Council
Ottawa, ON • 613/747-5544
www.cwc.ca
info@cwc.ca

Carbeck Structural Components Institute
Madison, WI • 608/310-6705
www.carbeck.org

The Evergreen Foundation
Bigfork, MT • 406/837-0966
www.evergreenmagazine.com
jim@evergreenmagazine.com

Florida Building Material Association
Mount Dora, FL • 352/383-0366
www.fbma.org
mail@fbma.org

Housing Inspection Foundation
Alexandria, MN • 320/763-6350
hif@iami.org

MSR Lumber Producers Council
Madison, WI • 888/848-5339
www.msrlumber.org
info@msrlumber.org

NAHB Research Center
Upper Marlboro, MD • 301/249-4000
www.nahbr.org

National Association of Home Builders
Washington, DC • 800/368-5242

National Frame Building Association
Lawrence, KS • 785/843-2444
www.nfba.org
nfba@nfba.org

National Lumber & Building Material Dealers Association
Washington, DC • 800/634-8645
www.dealer.org
nlbmda@dealer.org

Northwestern Lumber Association
Minneapolis, MN • 763/544-6822
www.nlassn.org
psiewert@nlassn.org

Southeastern Lumber Manufacturers Assoc.
Tyrone, GA • 770/631-6701
www.slma.org
steve@slma.org

Southern Forest Products Association
Kenner, LA • 504/443-4464
www.sfpa.org
mail@sfpa.org
See ad on page 39.

Truss Plate Institute ✓
Alexandria, VA • 703/683-1010
www.tpinstr.org

Western Wood Products Association
Portland, OR • 503/224-3930
www.wppa.org
info@wppa.org



WoodWorks
Tacoma, WA • 866/966-3448
www.woodworks.org
info@woodworks.org

BANDING/STRAPPING/COVERS/ WRAP SUPPLIER

BOSS Tiedowns & Strapping
Wells, TX • 936/867-4801
www.boss-strapping.com
blake@boss-strapping.com

Cordstrap USA Inc.
Racine, WI • 262/898-6670
www.cordstrap.net
sales.mw.usa@cordstrap.net

BUILDER

All Around Remodeling
Roanoke, TX • 903/681-0537
karlheilig@msn.com

My Builder LLC
Kennesaw, GA • 770/595-5143

BUILDING MATERIALS

Boise Cascade LLC
White City, OR • 541/826-0200
www.bcewp.com

iLevel by Weyerhaeuser
Federal Way, WA • 888/453-8358
www.weyerhaeuser.com
info@weyerhaeuser.com

LP Building Products ◆
Nashville, TN • 615/986-5600
www.lpcorp.com
ben.midge@lpcorp.com

BUSINESS CONSULTANT

JR Herring Enterprises Inc
Wellington, FL • 561/784-7979
jherring@jenackill.com

Todd Drummond Consulting, LLC.
Sunapee, NH • 603/763-8857
www.todd-drummond.com
todd@todd-drummond.com

COMPONENT SAW MFR

HOLTEC (USA) Corporation
Brandon, FL • 813/754-1665
www.holtecusa.com
info@holtecusa.com

Monet DeSaw Inc.
Fulton, MO • 573/642-4900
www.desaw.com
desaw@socket.net
See ad on page 44.



COMPUTER CONSULTING SERVICES

micea llc
Philadelphia, PA • 267/250-3336

COMPUTER SOFTWARE

Deacom, Inc.
Wayne, PA • 610/971-2278
www.deacom.net
marketing@deacom.net

Dietrich's North America
Aylmer, ON • 519/765-2468
www.dietrichs.com
w.dancey@dietrichs.com

Infinity LLC
Largo, FL • 727/403-1925
admin@contractorclasses.com

Keymark Enterprises, LLC
Boulder, CO • 303/443-8033
www.keymark.com
sales@keymark.com

Nascor International Ltd
Calgary, AB • 403/457-2701
www.nascorinternational.com
brad@nascor.com

OptiFrame Software, LLC
Greenwood Village, CO • 303/221-1200
www.optiframe.com
kbassani@optiframe.com

Smart-Evolution Corp ◆
Saint-Jean-Sur-Richelieu, QC • 450/347-1121
www.smart-evolution.com
sales@smart-evolution.com

✓ In-Plant WTCA QC Certified Third Party Inspection Agency ▲ WTCA Safety Certified Third Party Auditing Agency ◆ Cold-Formed Steel Council (CFSC) Member

● SBCA Insurance Broker Program Expert Partner ▶ SBCA Insurance Broker Program Partner

CONNECTOR/HANGER MFR

Quick Tie Products Inc.

Jacksonville, FL • 904/732-9377
www.quicktieproducts.com

Simpson Strong-Tie Co.

Pleasanton, CA • 925/560-9000
www.strongtie.com
sales@strongtie.com
See ad on page 20.



Trussed, Inc.

Perris, CA • 951/657-7491

USP Structural Connectors

Burnsville, MN • 952/898-8679
www.uspconnectors.com
info@USPconnectors.com

CRANE SALES & SERVICE

National Crane Corporation

Shady Grove, PA • 717/597-8121
www.nationalcrane.com
mrvoboda@nationalcrane.com

ENGINEERED WOOD PRODUCTS MFR

Nordic Engineered Wood

Montreal, QC • 514/633-9661
www.nordicewp.com
info@nordicewp.com

Roseburg Forest Products Co.

Roseburg, OR • 541/679-3311
www.rfpco.com
bob@rfpco.com

Trim Fit LLC

Owensville, MO • 573/437-4848
www.trimfitllc.com
iblocks@trimfitllc.com

ENGINEERING/TECHNICAL/ FORENSIC CONSULTANT

Apex Technology

Jacksonville, FL • 904/821-5200
www.apextechnology.com
mike@apextechnology.com

Merv Aranha

Glenco, ON • 613/391-5104
m.aranha@sympatico.ca

Arce Engineering Company, Inc.

Miami, FL • 305/553-3442
arceengineering@comcast.net

Aries Engineering, Inc.

Royston, GA • 706/245-6696
www.arieseng.com
ariestrz@bellsouth.net

Becklin & Whitney Consulting Engineers

Cambridge, MN • 612/598-4993
www.becklinwhitney.com
DWhit10351@aol.com

Building Consultants, Inc.

Lansdale, PA • 215/361-8570
www.bcihi.com
mark@bcihi.com

Call Engineering

Boise, ID • 208/321-2656
bgarner@callengineering.com

Callahan Associates, Inc.

Timonium, MD • 410/561-1980
www.callahaninc.com
info@callahaninc.com

Christy & Cobb, Inc.

Birmingham, AL • 205/933-1080
www.christycobb.com
judy@christycobb.com

Construction Science and Engineering, Inc.

Westminster, SC • 864/647-1065
www.constructionscience.org
karenblohm@bellsouth.net

Daniel C Smith PE Consulting Engineers

Raleigh, NC • 919/844-6050
www.dansmithpe.com
dan@dansmithpe.com

Russel E. Daniels, PE.

West Chester, PA • 610/692-9836
redanielspe@comcast.net

Dansco Engineering, LLC

Apollo Beach, FL • 813/645-0166
www.danscoengineering.com
trusses@danscoengineering.com

Deadlines Engineering, Inc

Kailua-Kona, HI • 808/326-7061
www.deadlinesengineering.com
Trusses@DeadlinesEngineering.com

Felten Group, Inc.

Phoenix, AZ • 602/867-2500
www.feltengroup.com
greg.felten@feltengroup.com

Ferris Home Consulting

Florence, MA • 413/575-8802
bradley.ferris@verizon.net

Florida Design Solutions

Apopka, FL • 407/814-2125
www.flds.cc
mdixon@flds.cc

GWZ Engineering

Wytheville, VA • 276/228-5338
gwzengr@ntelos.net

Harris & Sloan Consulting Group, Inc.

Sacramento, CA • 916/921-2800
www.hscgi.com
restrella@hscgi.com

Hudson International

Wayne, PA • 610/975-4600
www.hudsonines.com
info@hudsonines.com

J M Boyle & Associates LLC

Prineville, OR • 541/771-7075
www.jmb-panelman.com
jmb@jmb-panelman.com

Jeffrey D. Block, PE. & Associates, Inc.

Coeur d'Alene, ID • 208/765-5592
jdblock@imbris.net

John Arthur Consulting, Inc.

Firestone, CO • 303/833-5659
www.johnarthurconsulting.com
engineering@johnarthurconsulting.com

Jordan Engineering Group, LLC

Phoenix, AZ • 602/244-8400
www.jordaneng.net
rjordan@jordaneng.net

KRW Consulting Group, LLC

Elk Grove Village, IL • 847/734-0128
www.krweng.com
djoig@krweng.com

KW Engineering

Airville, PA • 717/862-3455
www.kweng.net
ken@kweng.net

Koehlinger Engineering

Bolivar, OH • 330/874-1163
koehling@wilkshire.net

Larsen & Landis

Wilmington, DE • 302/475-3175
www.larsenlandis.com
elarsen@larsenlandis.com

Lenard Gabert & Associates

Houston, TX • 713/527-0251

Lindemann Bentzon Bojack Engineering Inc

Clermont, FL • 352/242-0100
www.lbbe.com
hansb@lbbe.com

McClancy Engineers

Cary, NC • 919/387-7776
www.mcclancyeng.com

Monta Consulting & Design

Altamonte Springs, FL • 407/681-1917
www.montaconsulting.com
bill@montaconsulting.com

Mulhern & Kulp Structural Engineering, Inc.

Ambler, PA • 215/646-8001
www.mulhernkulp.com
mmulhern@mulhernkulp.com

Nederveld

Hudsonville, MI • 616/669-5190
www.nederveld.com
jleaym@nederveld.com

Nesbit Enterprises

Georgetown, TX • 512/868-1127
reneyz41@suddenlink.net

Packer Engineering, Inc.

Ann Arbor, MI • 734/786-5000
Etuczak@packereng.com

Packer Engineering

Naperville, IL • 630/577-1964
www.packereng.com
mchahill@packereng.com

Paul Hannenb & Associates

Bloomfield Hills, MI • 248/334-5100

Phillips Wood Truss Engineering

Taneytown, MD • 410/984-9184
pphillips67@gmail.com

Project Time & Cost

North Branch, MN • 651/341-0488
www.ptcinc.com
bruce.barnes@ptcinc.com

Prugar Consulting, Inc.

Middleburg Heights, OH • 440/891-1414
www.prugarinc.com
jf.prugar@prugarinc.com

Robbins Design Service

Victoria, IL • 309/879-3258
www.robbinsdesignservices.com
edrobbins@winco.net

SEA Limited

Worthington, OH • 614/888-4160

SK&A Engineers

Washington, DC • 202/659-2520
www.skaengineers.com
skadc@skaengineers.com

Norman Scheel, S.E.

Fair Oaks, CA • 916/536-9585
www.nsse.com

Schoor DePalma Engineers

Manalapan, NJ • 732/577-9000
www.schoordepalma.com
smcconne@schoordepalma.com

Sheppard Engineering, P.C.

Troy, MI • 248/585-4240
www.sheppardengineering.com
generaldelivery@sheppardengineering.com

Sheppard Structural Consulting, PC.

Rochester Hills, MI • 248/608-3445

Barry Stoll, PE

Barberton, OH • 330/745-5635
bstoll@neo.rr.com

Suddarth Engineering Consultant

Sherwood, OR • 503/625-2200

Sullivan & Associates Engineering, Inc.

Coral Springs, FL • 954/755-2648
www.sullivanengineeringinc.com
jerrys@myacc.net

Sweatt Engineering

Fort Worth, TX • 817/676-1300
gary.sweatt@gmail.com

Szewczak Associates Consulting Engineers

Avon, CT • 860/677-4570
www.szewczakassociates.com
richard@szewczakassociates.com

TECO

Sun Prairie, WI • 608/837-2790
www.tecotested.com
steve.winstorfer@tecotested.com

Trehel Corporation

Clemson, SC • 864/654-6582
www.trehel.com
dstokes@trehel.com

Tru-Truss Engineering

El Dorado Hills, CA • 916/933-4148
wtca@builderspost.com

Tyrell Engineering

Edgewood, WA • 253/568-7991
dantyrrell@worldnet.att.net

Vetter Engineering Inc

Clinton, OH • 330/882-6119
bvpe@neo.rr.com

West Point Engineering

Phoenix, AZ • 602/943-1477

Wiss, Janney, Elstner Associates

Northbrook, IL • 847/753-7202
www.wje.com
psymponson@wje.com

Wilbur T. Yaxley, P.E. Forensic Engineer

Seffner, FL • 813/657-1840
wtaxley1@verizon.net

EQUIPMENT MFR (DOOR)

Builders Automation Machinery Co., LLC

Largo, FL • 727/538-2180
www.buildersautomation.com
rmitvalsky@buildersautomation.com

EQUIPMENT FINANCING

Acceptance Leasing & Financing

Moon Township, PA • 412/262-3225
www.acceptlease.com
cvillella@acceptlease.com

Vision Financial Group, Inc.

Pittsburgh, PA • 888/834-3278
www.vigusa.com
info@vigusa.com

EQUIPMENT LEASING SERVICES

OFC Capital Corporation

Roswell, GA • 800/336-4949
www.ofccap.com

EQUIPMENT MFR (TRUSS)

Clark Industries Inc.

Monett, MO • 417/235-7182
www.clark-ind.com
general@clark-ind.com
See ad on page 17.



Commercial Machinery Fabricators, Inc.

Lansing, MI • 517/323-1996
www.cmfsthealth.com
info@cmfsthealth.com

Enventek, LLC

Buchanan, MI • 269/815-4150
www.enventek.com
cjwalters@gmail.com

Fournier Industries

Thetford Mines, QC • 418/423-4241
www.fournierindustries.com
general@fournierindustries.com

The Hain Company

Diamond Springs, CA • 530/295-8068
www.haincompany.com
sales@haincompany.com

Hundegger USA, L.C.

Heber City, UT • 435/654-3028
www.hundeggerusa.com
info@hundeggerusa.com

Klaisler Manufacturing Corp.

Franklin, IN • 877/357-3898
www.klaisler.com
info@klaisler.com

Koorsen Manufacturing, Inc.

Marshalltown, IA • 641/752-1316
www.koorsenmfg.com
koorsenmfg@msn.com

The Koskovich Co. Inc.

Rochester, MN • 507/286-9209
www.KoskovichCompany.com
jim@ornisaw.com

Mango Tech Pty Ltd

San Jacinto, CA • 951/654-3525
www.mangotech.com

PFF Technologies

Malaga, WA • +61/8 9 249 4542
www.razerusa.com
eserrano@pfttech.com.au

Rand Manufacturing Inc.

Raleigh, NC • 757/240-1975
www.randmanufacturing.com
awatts@randmanufacturing.com

SPIDA Machinery 2000 Ltd.

Rotorua • 011/64-7-345-8088
www.spida.co.nz
forinfo@spida.co.nz

Triad/Merrick Machine Company

Alda, NE • 800/568-7423
www.triadrvo.com
lowell@merrikmachine.com

Truss Industry Production Systems

Britton, SD • 605/448-5959
tips@brittonsd.com

EQUIPMENT MFR (WALL)

Panels Plus

Albert Lea, MN • 866/726-7587
www.panplus.com
sales@panplus.com
See ad on page 13.



Randek BauTech AB

Falkenberg, SE • 46/380-566500
www.randek-bautech.com
lea@randek-bautech.se

Viking Wall Panel Systems

Minneapolis, MN • 800/328-2403
www.wallpanelassembly.com
sales@vikingeng.com
See ad on page 21.



EQUIPMENT WHOLESALER/ BROKER/RESELLER (TRUSS)

Eide

Minneapolis, MN • 612/521-9193
www.eideintegratedsystems.com
info@eidemachinery.com
See ad on page 41.



Masengill Machinery Company

Morristown, TN • 888/873-9663
www.masengills.com
waynem@masengills.com

Salter Associates, Inc.
Smyrna, GA • 770/434-1006
www.salter.com

Stiles Machinery, Inc.
Grand Rapids, MI • 616/698-7500
www.stilesmachinery.com
mainmail@stilesmachinery.com

Wasserman & Associates, Inc.
Lincoln, NE • 402/438-2161
www.wasserman-associates.com
rodwass@aol.com

Wood Truss Systems, Inc.
Muncie, IN • 888/288-9874
www.woodtrussystems.com
sales@woodtrussystems.com
See ad on page 15.



FASTENER SUPPLIER

ITW Industrial Fastening - Mng of Paslode and Duo-Fast
Arlington Heights, IL • 888/726-3577
pat.ryan@itwpanelfasteningssystem.com

OMG/FastenMaster
Agawam, MA • 800/518-3569
www.fastenmaster.com
info@olyfast.com

Senco Products, Inc.
Cincinnati, OH • 513/388-2088
www.senco.com
jbrowning@senco.com

Stanley Bostitch, Inc.
East Greenwich, RI • 401/884-2500
www.bostitch.com
toconnor@stanleybostitch.com

FIRE RETARDANT WOOD TREATMENT

Arch Chemicals, Inc.
Smyrna, GA • 770/801-6600
www.frameguardwood.com
info@dricon.com

FLOOR WEB SUPPLIER

Wood Specialty Company
Washington, GA • 706/678-1665
woods@spec@nu-z.net

FORKLIFT SALES & SERVICE

Combilift Ltd.
Greensboro, NC • 877/COMBI 56
www.combilift.com
info@combilift.com

Princeton Delivery Systems Inc.
Canal Winchester, OH • 800/331-5851
www.piggy-back.com
sales@piggy-back.com

Sellick Equipment Limited
Harrow, ON • 519/738-2255
www.sellickequipment.com
sellick@mnsi.net

GLULAM BEAM MFR

QB Corporation
Salmon, ID • 208/756-4248
www.qbcorp.com
dennisl@qbcorp.com

HOME INSPECTOR

Residential Building Inspectors LLC
Marysville, OH • 614/214-1487
www.yourhomesok.com
mike@yourhomesok.com

I-JOIST MFR

International Beams, Inc.
Montreal, QC • 866/457-4043
www.internationalbeams.com
tim@lebcorp.com

INSULATION MFR

Dow Chemical Company
Midland, MI • 989/636-6300
www.dow.com
jhgurnee@dow.com

INSURANCE

AIC Insurance Services
Ada, MI • 616/676-4000
www.theaicgroup.com
mark@theaicgroup.com

Area Appraisal Associates
Oviedo, FL • 407/365-9921
www.area-appraisal.com
frank@area-appraisal.com

Bowermaster & Associates ●
Cypress, CA • 714/733-6200
www.bowermaster.com
rlangton@bowermaster.com

Cincinnati Insurance Companies ▲
Norcross, GA • 770/446-5422
www.cinfin.com
ed_smith@cinfin.com

First Commercial Insurance Company
Hialeah, FL • 305/753-2577

Harden & Associates ▶
Jacksonville, FL • 904/421-5363
www.hardenassociates.com
dierpont@hardenassociates.com

Holmes Murphy & Associates ▶
Cedar Rapids, IA • 319/364-0648
www.holmesmurphy.com
jkapsch@holmesmurphy.com

MJ Insurance, Inc. ▶
Scottsdale, AZ • 602/346-9100
www.mjinsurance.com

Pennsylvania Lumbermens Mutual Insurance Co.
Philadelphia, PA • 800/752-1895
www.plmins.com
info@plmins.com

Shaw Sabey & Associates, LTD
Vancouver, BC • 604/808-4212
www.shawsabey.com
dparry@shawsabey.com

Sirak-Moore Insurance Agency, Inc. ●
Canton, OH • 330/493-3211
www.sirakmoore.com
doug@sirakfinancial.com

Taylor, Turner & Hartsfield Insurance Services, Inc. ●
Cumming, GA • 770/889-8600
www.thins.com
smolina@thins.com

LASER EQUIPMENT

SL-Laser Systems LP
Charlotte, NC • 704/561-9990
www.sl-laser.com
mail@sl-laser.com

Virtek Vision International, Inc.
Waterloo, ON • 519/746-7190
www.virtek.ca

LEGAL SERVICES

Conner Gwyn Schenck PLLC
Greensboro, NC • 336/691-9222
www.cgspllc.com
ahgwyn@cgspllc.com

Kuck Casablanca & Odum LLC
Atlanta, GA • 404/816-8611
www.immigration.net
ckuck@immigration.net

Pagel, Davis & Hill, P.C. ◆
Houston, TX • 713/951-0160
www.pdhlaw.com
kjp@pdhlaw.com

LUMBER COOPERATIVE

Do it Best Corp.
Fort Wayne, IN • 260/748-5300
www.doitbestcorp.com
todd.hixson@doitbest.com

LMC - Lumbermens Merchandising Corp.
Wayne, PA • 610/293-7000
www.lmc.net
jkeele@lumbermens.com

LUMBER DEALER

Curtis Lumber Company Inc.
Ballston Spa, NY • 518/885-5311
www.curtislumber.com
hallgren@curtislumber.com

Jordan Forest Products, LLC
Mount Gilead, NC • 910/439-6121
www.jordanlumber.com
sales@jordanlumber.com

LUMBER DISTRIBUTOR

Bloch Lumber Company
Chicago, IL • 312/466-4500
www.blochlumber.com
ashleyb@blochlumber.com

Lignum Forest Products LLP
Vancouver, BC • 604/484-5000
www.lignumfp.com
info@lignumfp.com

Robbins Manufacturing Company
Tampa, FL • 813/971-3030 x264
www.robbinslumber.com
ghellman@robbinslumber.com

LUMBER MILL

Anthony Forest Products Company
El Dorado, AR • 870/862-3414
www.anthonyforest.com
info@anthonyforest.com

Beadles Lumber Co.
Moultrie, GA • 229/985-6996
www.beadleslumber.com

Canadian Forest Products Ltd.
Vancouver, BC • 604/261-5111
www.canfor.com
Tim.Mosley@canfor.com

Georgia-Pacific Corporation
Atlanta, GA • 404/652-4000
www.gp.com/build

Gilman Building Products, LLC
Yulee, FL • 904/548-1000
philipskoropat@gilmanbp.com

Rayonier Wood Products
Baxley, GA • 912/367-1571
www.rayonier.com
judy.ogden@rayonier.com

Temple-Inland Forest Products
Diboll, TX • 936/829-5511
www.temple.com

Tolleson Lumber Co., Inc.
Perry, GA • 478/987-2105
www.tollesonlumber.com
sales@tollesonlumber.com

West Fraser, Inc.
Germantown, TN • 800/841-2507
www.westfraser.com
lumber@westfraseinc.com

LUMBER WHOLESALER/BROKER

BC Lumber & Manufac Co Inc.
Greensboro, NC • 336/574-0110
wscranner@aol.com

Cox Lumber Company
Hot Springs, AR • 501/624-5666
coxlumber@sbccglobal.net

Empire Wholesale Lumber Company
Bath, OH • 330/665-7800
www.empirewholesale.com
info@empirewholesale.com

Metropolitan Lumber Company
Oak Brook, IL • 630/990-2400
www.metrolumberco.com
jbrown@metrolumberco.com

North Star Forest Materials
Saint Paul, MN • 651/644-9807
www.weekesforest.com
northstar@weekesforest.com

Pelican Bay Forest Products
Bend, OR • 541/312-9522
www.pelicanbayfp.com
ronpelican@bendbroadband.com

Seaboard International Forest Products, LLC
Nashua, NH • 603/881-3700
www.sifp.com
sifpmail@fctg.com

Viking Forest Products
Minneapolis, MN • 952/941-6512
www.vikingforest.com
matt.brekke@fctg.com

LVL MANUFACTURER

Finnforest USA
Roseville, MI • 586/296-8770
www.finnforestus.com
lbouford@finnforestus.com

MARKETING/MANAGEMENT CONSULTANT

Haverford Capital Advisors, Inc.
Paoli, PA • 610/407-4020
www.haverfordcapital.com
krebane@haverfordcapital.com

Qualtim, Inc. ◆
Madison, WI • 608/271-1176
www.qualtim.com
info@qualtim.com
See ad on page 40.



MARKETPLACE SERVICE PROVIDER

America's Skilled Personnel/Pacesetter Personnel Services
Houston, TX • 713/527-0707
www.pps.com

A-Plus Construction School, Inc.
Palm Coast, FL • 888/482-7277
www.aplusconstructionschool.com
alan@aplusconstructionschool.com

Custom Building Solutions NW
Port Townsend, WA • 360/385-3427
www.cbs-nw.com
cbs-nw@cablespeed.com

MJB - Eagle Feather Homes, Inc. ◆
Corvallis, OR • 877/652-3245
www.eaglefeatherhomes-floorplans.com
eagle@eaglefeatherhomes.com

MATERIAL HANDLING EQUIPMENT MFR

Hiab, Inc.
Perrysburg, OH • 419/482-6000
www.hiabus.com
us.sales@hiab.com

Palfinger North America
Niagara Falls, ON • 905/374-3363
www.palfinger-northamerica.com
info@palfinger-na.com

OTHER SERVICES

J William Haley
Charlotte, NC • 704/677-6640
haley292@netzero.com

The Truss Office ◆
Boynton Beach, FL • 561/734-5208
lawsonjoe@bellsouth.net

Williams Robotics, LLC
Burlington, NC • 919/724-2869

PAST PRESIDENT (RETIRED)

Don Hershey
Peoria, AZ • 623/572-4900
donhershey1@cox.net

Rip Rogers
Spring, TX • 713/691-6900

Leonard Sylk
Merion Station, PA • 609/261-4300
lsylk@comcast.net

Lee Vulgaris
Marion, MA • 508/748-2260

PRE-ENGINEERED BUILDING PKGS

Green-R-Panel Home Building Systems
Concord, ON • 416/566-2366
www.greenpanel.com
ld@greenpanel.com

PROFESSIONAL SERVICES

Douthit Consulting Services
Van, TX • 903/963-7975

Loeffler Marketing Services
Winston Salem, NC • 336/785-8745
hangerman1@bellsouth.net

PUBLICATION

International Wood Markets Group
Vancouver, BC • 604/801-5996
www.woodmarkets.com
retaylor@woodmarkets.com

The Pine Page
Burlington, NC • 800/256-7952
www.laymansguide.net
matt@laymansguide.net

The Softwood Forest Products Buyer
Memphis, TN • 901/372-8280
www.softwoodbuyer.com
editor@millerpublishing.com

Widman Associates, Inc.
Vancouver, BC • 604/675-6923
www.widman.com
jroth@widman.com

RECRUITING/PLACEMENT SPECIALIST

HRIC
Pueblo, CO • 888/656-1024
www.hric.com
hric@sococo.net

PrincetonOne
Indianapolis, IN • 317/257-5411
www.PrincetonOne.com
jack.ritter@princetonone.com

RLS & Associates

Tyler, TX • 866/322-9700
www.rlsandassociates.com
randy@rlsandassociates.com

RECYCLING PRODUCTS/CONSULTANT

Vecoplan, LLC

High Point, NC • 336/861-6070
www.vecoplanllc.com
info@vecoplanllc.com

ROUND-END WEB SALES

Turb-O-Web USA, Inc.

Daytona Beach, FL • 888/750-6005
www.turb-o-web.com
john@turb-o-web.com

SAW MANUFACTURER

McGinnis Saw Service, Inc.

Dewey, AZ • 928/632-9405
www.mcginnissawservice.com
blades3@mindspring.com

Vista Machines Inc.

Littlestown, PA • 717/359-9212
www.angleboss.com
sales@vistamachines.com

Weinig Group

Moorestville, NC • 704/799-0100
www.weinigusa.com
sales@weinigusa.com

STRUCTURAL STEEL FRAMING

Aegis Metal Framing ♦

Chesterfield, MO • 314/851-2200
www.aegismetalframing.com
info@aegismetalframing.com

Nuconsteel, A Nucor Company ♦

Denton, TX • 940/383-0593
www.nuconsteel.com
klindemulder@nuconsteel.com

TrusSteel - ITW Building Components Group ♦

Arlington, TX • 817/483-9181
www.TrusSteel.com
dgoodwin@TrusSteel.com

STUDENT

Josh Jacobs

Auburndale, FL • 863/412-9825

THIRD PARTY INSPECTION AGENCY

Chesapeake Region Safety Council ▲

Keymar, MD • 410/775-0365

Continental Inspection Agency, LLC ✓

Lodi, CA • 916/718-5217
drdodgerman@sbcglobal.net

James Knight & Associates ✓

St. George, ON • 519/448-3548
jkwoodeng@sympatico.ca

National Inspection Association, Inc.

Gillette, WY • 307/685-6331
NIAgillette@vcn.com

NMS Training Systems ▲

Anchorage, AK • 907/565-3300
www.nana-nts.com
training@nmsuse.com

OSHA Health Consultation ▲

Green Bay, WI • 920/448-5235
johnsld@mail.slh.wisc.edu

PFS Corporation ✓

Cottage Grove, WI • 608/839-1013
www.pfscorporation.com

Risk Services - Nevada, Inc. ▲

Las Vegas, NV • 702/678-6868
www.pboa.com

Safety Technology Services, Inc.

Saint Cloud, FL • 407/891-9891
www.sts-fla.com
cblack@sts-fla.com

Stafford Inspection & Consulting Services, LLC ✓

Orlando, FL • 407/380-7914
www.staffordinspection.com
tandt919@bellsouth.net

Timber Products Inspection, Inc. ✓

Conyers, GA • 770/922-8000
www.tpinspection.com
pedwards@tpinspection.com

TRAILER SALES & SERVICE

A-NU-PROSPECT

St. Marys, ON • 519/349-2202
www.truss-trailer.com

Lakeside Trailer Manufacturing, Inc.

Crocker, MO • 573/736-2966
www.rollerbed.com
lee@rollerbed.com



See ad on page 13.

Pratt Industries

Bridgeman, MI • 269/465-7676
www.prattinc.com
sales@prattinc.com

Precision Equipment Manufacturing

Fargo, ND • 701/237-5161
www.precisionequipmfg.com
michael@precisionequipmfg.com

TREATER (WOOD)

Hoover Treated Wood Products, Inc.

Thomson, GA • 706/595-9855
www.frtw.com
kperkins@frtw.com

WoodSmart Solutions, Inc.

Boca Raton, FL • 561/416-1972
www.bluwood.com
info@bluwood.com

TRUSS BRACING MANUFACTURER

Gerryrigs LLC ♦

Charlottesville, VA • 434/295-7062
www.gerryrigsllc.com
gerryrigs@gmail.com

TRUSS PLATE MANUFACTURER

Cherokee Metal Products, Inc.

Morristown, TN • 423/581-3446
www.masengills.com
waynem@masengills.com

CompuTrus, Inc.

Lake Elsinore, CA • 951/245-9525
www.comptrusinc.com
support@comptrusinc.com

Eagle Metal Products

Mabank, TX • 800/521-3245
www.eaglemetal.com
info@eaglemetal.com
See ad on page 19.



ITW Building Components Group Inc. ♦

Arlington, TX • 817/633-5100
www.itwbcg.com
kkuehn@itwbcg.com
See ad on pages 23, 43.



MiTek Industries, Inc.

Chesterfield, MO • 314/434-1200
www.mii.com
grenner@mii.com
See ad on page 2-3.



Robbins Engineering, Inc.

Tampa, FL • 813/972-1135
www.robbseng.com
info@robbseng.com

UNIVERSITY

University of Wisconsin - Madison

Madison, WI • 608/262-3484
www.engr.wisc.edu
cramer@engr.wisc.edu



SBCA Chapters

As of February 17, 2009

SBCA Chapters play a key role in the future of the structural building components industry. For an industry to be successful, it must have full participation of all members. Local chapters provide the opportunity to actively participate and shape its future. For more information, contact us at chapters@sbcindustry.com.

Alabama Component Manufacturers Association
Shelby, AL • 205/669-4188

Arkansas Structural Building Components Association
Fort Smith, AR • 479/783-8666

California Structural Building Components Association
Oceanside, CA • 760/967-6171
www.wtcacalesca.com

Central Florida Component Manufacturers Association
Sanford, FL • 407/323-6990

Colorado Truss Manufacturers Association
Denver, CO • 303/944-8436
www.ctmchapter.com

Component Manufacturers Association of the Rio Grande
Anthony, NM • 915/790-5900

Georgia Component Manufacturers Association
Oxford, GA • 770/534-0364

Inland Empire Truss Fabricators Association
Rathdrum, ID • 208/687-9490

Iowa Truss Manufacturers Association
Des Moines, IA • 515/283-7100

Mid Atlantic Structural Building Components Association
Telford, PA • 215/723-5108

Mid South Component Manufacturers Association
Meridian, MS • 601/483-3941

Minnesota Truss Manufacturers Association
Minneota, MN • 507/872-5195
www.mtmawtca.com

Missouri Truss Fabricators Association
Plattsburg, MO • 816/930-3177
www.mtfchapter.com

North Florida Component Manufacturers Association
Jacksonville, FL • 904/821-5200

Northwest Truss Fabricators Association
Auburn, WA • 253/833-1050
www.nwfta.com

SBCA Canada Chapter/ Chapitre Canadien de la SBCA
Mississauga, ON • 905/275-1800

SBCA - Illinois
Rockford, IL • 815/332-4904

SBCA - Montana
Stevensville, MT • 406/777-0210

SBCA - New York
Kingston, NY • 845/339-3656

SBCA - Northeast
Florence, MA • 413/584-1194

South Florida WTCA
Fort Pierce • 772/465-2012
www.sflwtca.org

Southern Nevada Component Manufacturers Association
North Las Vegas, NV • 702/657-1889

Southwest Florida Truss Manufacturers Association
Fort Myers, FL • 863/385-8242

Structural Building Components Association of the Capital Area
Emporia, VA • 434/634-8888

Structural Building Components Association of the Carolinas
Albemarle, NC • 704/983-1144
www.wtcnc.com

Tennessee Truss Manufacturers Association
Morristown, TN • 423/581-3446

Truss Manufacturers Association of Texas
Saginaw, TX • 817/232-2233
www.tmatchapter.com

West Florida Truss Association
Spring Hill, FL • 813/996-3981

Western Component Manufacturers Association
Sherwood, OR • 503/825-4585

Wisconsin Truss Manufacturers Association
Edgerton, WI • 608/884-6141
www.wiwtca.com

Wood Truss Council of Michigan
Marne, MI • 616/677-3743
www.wtcmich.com

WTCA - Arizona
Surprise, AZ • 623/584-8151

WTCA - Indiana
Moorestville, IN • 317/834-5380

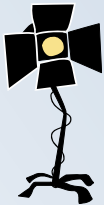
WTCA - Kentucky
Lexington, KY • 859/255-2481

WTCA Ohio Chapter Association
Canton, OH • 330/478-2100
www.wtcaohio.com



Chapter Corner

For more information about SBCA Chapters and how to become more involved, contact Anna L. Stamm (608/310-6719 or astamm@qualtim.com) or Danielle Bothun (608/310-6735 or dbothun@qualtim.com). Contributions to Chapter Corner, including pictures, are encouraged. Submissions may be edited for grammar, length and clarity.



Chapter Spotlight

Making a Difference – The Iowa Chapter’s Legislative Breakfast

by Sean D. Shields & Anna L. Stamm

In February, component manufacturers from across the state of Iowa converged in Des Moines to participate in the Iowa Truss Manufacturer Association’s (ITMA) Annual Legislative Breakfast at the Iowa Capitol building. “Visiting our lawmakers and talking to them about our businesses and key issues is one of the most important things we do as a chapter,” said Rick Parrino of Plum Building Systems in West Des Moines.

This year, chapter members joined with several lumber dealers and home builders from the Iowa Lumber and Home Builder Associations to present a significant and united front on several key issues. “Unfortunately, the current leadership of the Iowa Legislature is determined to eliminate our state’s Right to Work status,” explained Ray Noonan, Jr. of Cascade Mfg Co in Cascade. Just ten days prior to the ITMA breakfast, major legislation that would weaken existing Right to Work statutes was narrowly defeated by two votes in the Senate. Due to the close vote, it is likely a similar bill will come up for a vote again soon. Noonan added, “That’s why we need to be here to let lawmakers know how damaging this legislation would be to manufacturers like us.”

Iowa Chapter members also spoke with their lawmakers about their concerns with other current issues under debate: prevailing wage legislation that could significantly increase the cost of housing



Pictured left to right: Tom Lambert, Ray Noonan, Rick Parrino, Mike Farr, Dave Mitchell, Todd Gilligan, Al Esch, Matt Miller

construction, an employee verification measure that would place an unfair burden on employers, and several bills aimed at increasing property taxes or adding impact fees that would make owning a home more difficult for the average Iowan. “Education is the key,” said Al Esch of Lumber Specialties in Dyersville. “If these lawmakers don’t get our perspective, they may vote for something without knowing there is a significant downside to that idea.”

Most importantly, ITMA members are quick to point out that an event such as the Legislative Breakfast is incredibly easy and affordable for any chapter to arrange. Begun a few years ago, it has become a great opportunity for chapter members to meet with their legislators in a forum that provides good communication on real issues.

If your chapter would like to start a tradition like the Iowa Legislative Breakfast, just let us know. Developing legislative relationships can produce lasting, positive results for your chapter. SBCA staff can help you get started, and ITMA would be happy to help you make a difference in your state, too. **SBC**

Hundegger USA

Hundegger has sold over 3200 machines in more than 40 countries world-wide.

Industry leader for over 30 years



SC2i Whole House Saw



K2i Joinery Machine



PBA-Panel Cutting Machine



HM4-Four Sided Planer



MHM Solid Wood Wall Production Line

Visit us at www.hundeggerusa.com. For more information email us at info@hundeggerusa.com, or call (435) 654-3028.

Hundegger has a solution for any product needs

For reader service, go to www.sbcmag.info/hundegger.htm

DO THE MATH!

SS+TS+IPH=



Superior Strength + Top Stiffness + Ideal Plate Holding = Southern Pine



www.southernpine.com

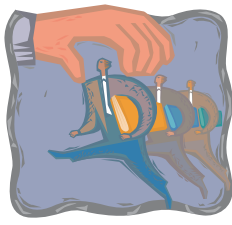
504/443-4464 • FAX 504/443-6612

For reader service, go to www.sbcmag.info/spc.htm

DISCOVER THE COST SAVINGS

when using Southern Pine, offering superior strength, stiffness, and plate-holding ability. The Southern Pine Council's brochure *Southern Pine for Structural Components* details these savings using a direct design comparison between lumber species for a typical project. Request or download your free copy at www.southernpine.com, your source for the latest Southern Pine lumber information.

SOUTHERN PINE: YOUR CHOICE FOR COMPONENTS



Classified Ads

PRINCETON'S PIGGYBACK PB45

PiggyBack® PB45 is the newest, multi-purpose, mountable forklift for onsite deliveries. Dynamic new design provides major advantages in size, weight & handling. Standard, all-wheel hydrostatic drive assures exceptional power, traction & stability under tough conditions. 81" Lo-Pro model avail. 800/331-5851 or sales@piggy-back.com.

TRUSS PLANT FOR SALE

Charlotte, NC market. Contains 3 new Klaisler truss lines, including Koskovich Planx system. Did \$5.5 million in sales at peak. 20,000 SF in buildings on 6 acres. Plant can service Charlotte, Columbia & Greenville, SC markets. Equipment, buildings, land & vehicles as a package for \$1,249,000. Contact: 803/289-6211.

Register IMMEDIATELY to Attend the SBC Legislative Conference!

MAY 13-15, 2009



www.sbcleg.com

BUILDING NEW RELATIONSHIPS

“People in government only know what they see on TV or on the Internet. They don't know about our industry and our concerns unless we bring them to their attention. That's why I go; I love it.”
—Chris Lambert, Southeastern Materials, Inc.



For reader service, go to www.sbcmag.info/sbca.htm

In God we trust, all others bring data.

—W. Edwards Deming, American Statistician

New product?
Improvements to a current product?



Proprietary Confidential Testing



Call us today to develop your product's testing plan!
Contact Peggy at (608) 310-6723.

www.qualtim.com/testing.htm

For reader service, go to www.sbcmag.info/qualtim.htm

Advertiser Index

Building Component Manufacturers Conference (BCMC) *	15
Clark Industries, Inc. *	17
Eagle Metal Products *	19
Eide *	41
Finnforest USA *	11
Hoover Treated Wood Products, Inc. *	18
Hundegger USA L.C. *	38
ITW Building Components Group (Alpine, Truswal, IBS) *	23, 43
Lakeside Trailer Manufacturing, Inc. *	13
MiTek Industries, Inc. *	2-3
Monet DeSaw Inc. *	44
PANELS PLUS *	13
Pennsylvania Lumbermens Mutual Insurance Co. *	22
Qualtim, Inc. *	40
SBCA *	4, 40
Simpson Strong-Tie Company, Inc. *	20
Southern Pine Council *	39
Stiles/Homag Canada/Weinmann *	19
Viking – Wall Panel Systems *	21
Wasserman & Associates *	13
Wood Truss Systems, Inc. *	14

* Gold * Silver * Bronze

For more information & to contact SBC advertisers, visit www.sbcmag.info/advertisers.

WizardPDS® drop-in Channels™

New, Used & Reconditioned Equipment,
Table Retro Fits, Parts and Supplies.

WizardPDS®
ready presses!

Visit eidemachinery.com for
complete Used Equipment listings –
Including WizardPDS® drop-in
Channels™ Ready press equipment.



Think green. Retrofit.
Save green.

Achieve full automation, zero set up time, and save money by
retrofitting your existing truss fabrication equipment.

Old technology turned *state-of-the-art* with
WizardPDS® drop-in Channels™



WizardPDS®
Automated Perimeter Definition System

EIS Eide Integrated
Systems, LLC

We bring the best together!

Toll free 800-344-3433 Ph. 612-521-9193 Fax 612-521-9307 www.eideintegratedsystems.com
Eide Integrated Systems, LLC PO Box 11397 / 3219 North Second Street Minneapolis, MN 55411-0397



EIDE '02 Alpine 120' Roller Gantry System
Eide Machinery Sales, Inc. | Toll free 800-344-EIDE | www.eidemachinery.com



EIDE '04 MiTek - RoofTracker Press System
Eide Machinery Sales, Inc. | Toll free 800-344-EIDE | www.eidemachinery.com



EIDE '97 Pacific Auto Press LT Hydraulic Truss Press
Eide Machinery Sales, Inc. | Toll free 800-344-EIDE | www.eidemachinery.com

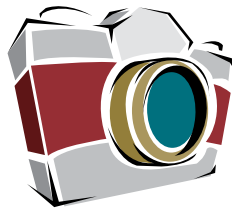


EIDE '80' MiTek Roller Gantry Press System
Eide Machinery Sales, Inc. | Toll free 800-344-EIDE | www.eidemachinery.com

EIDE
MINNEAPOLIS

Serving the Wood Product
& Fabrication Industries
– Since 1927 –

Toll free 800-344-EIDE
www.eidemachinery.com



Parting Shots

Share your stories and photos with us! Send submissions to partingshots@sbcmag.info.



Behind the Scenes at SBCRI

SBCRI has the flexibility to house many different assemblies, systems and even enclosed structures, but they don't build themselves. Each new project requires a team of hard working, heavy lifters to tear down the old set-up and put a new one in place. That's where the trusty staff of SBCRI comes in. Pictured from left to right:

1. Monkey business. A fearless Michael Oftedahl perches on a system of trusses to secure a steel beam. Note his harness and safety

glasses for protection. It's a long way down! Not to be outdone, Kirk Grundahl performs a death-defying stunt by balancing on one foot.

2. "Big guy in a little coat." Facility manager Keith Hershey shows off by squeezing his athletic frame into a machinist's coat.

3. Mad scientist. Dan Hawk peers between two steel beams to watch wiffle trees bear down on a truss system while simultaneously executing the test from his computer. **SBC**



KOSKOVICH
COMPANY
Automation that works.™

BUILDING SYNERGY

The key to building success is the relationship between all the parts and all the players - working together to get the ball rolling, building trust, Building Synergy.

We are the ITW Building Components Group, all the brands you have trusted for years working together to provide everything you need with outstanding products and services and expert support every step of the way.



Call us to see how we can help you connect all the dots from the first design step, to engineering, to fabrication and beyond.

ITW Building Components Group

800.735.8055 | www.itwbcg.com

Truss Software -
Engineering -
Connectors

Truss Cutting
& Fabrication
Equipment

Wall Panel
Software &
Equipment

Canadian
Products
& Services

Trimmable
Floor Truss
System

Cold-formed
Steel Truss
System

Architectural
Design
Software

Design &
Manufacturing
Software

Truss
Fastening
Systems

Wall Panel
Fastening
Systems



Connector
Division
800.521.9790
itwbcg.com

Alpine
Equipment
800.755.6005
alpineequip.com

Intelligent
Building Systems
866.204.8046
intelbuildsys.com

Alpine
Systems
905.417.2766
alpineways.com

SpaceJoist TE
800.238.8678
spacejoist.com

TrusSteel
888.565.9181
trussteel.com

Ameri-CAD
VisionREZ
972.747.7880
visionrez.com

hsbCAD
514.428.1444
hsbcad.com

ITW Industrial
Fastening
888.386.3278
itwindfast.com

Panel Fastening
Systems
888.726.3577
itwpls.com

**"The Safest, Easiest, Fastest
& Most Precise Way to Cut
Floor Webs!"**

FWA-500



"We purchased our FWA 500 to handle a significant increase in our floor truss line and this saw has been just what we needed. It has fantastic work load capacity and Monet always produces well-built, low-maintenance saws."

fantastic work load capacity and Monet always produces well-built, low-maintenance saws."

-Wayne Beebe
Oregon Truss & Dominion Truss Companies

www.Desauw.com

MONET DESAUW INC.
3100 DOGWOOD DRIVE * FULTON, MO 65251 * (877) 642-4900

For reader service, go to www.sbcmag.info/monetdesauw.htm

Desawyer 2000

The only computerized, five-bladed saw on the market with a complete manual backup system

"A great product backed up with unbelievable service."

-Al Cannon
Acadiana Building Components, LLC

