

DC MALL BUILD



9000 REGENCY SQUARE BLVD.
SUITE 100, JACKSONVILLE, FL 32211
904.821.5200

DO NOT SCALE THESE DRAWINGS - DRAWINGS SCALE IS 80% OF DESIGNATED SCALE IF PRINTED ON 11"x17" MEDIA

UPDATE ME

PLAN # and NAME
BASE PLAN
PROJECT SERIES

SUBDIVISON

--

PROJECT NO:

2023.003545

DRAWN:

ZP

CHECKED:

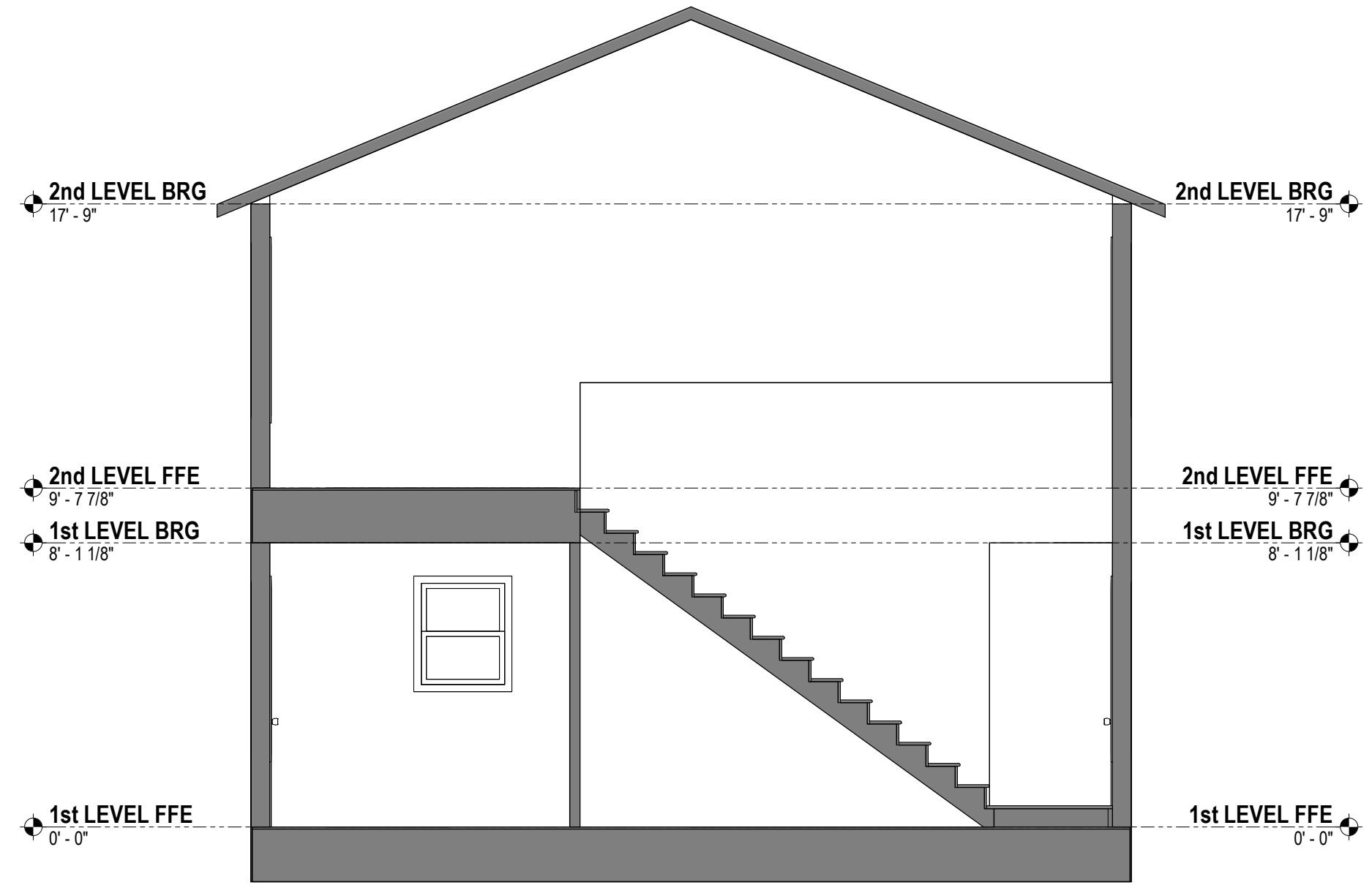
DR

04-27-2023

REVISIONS:

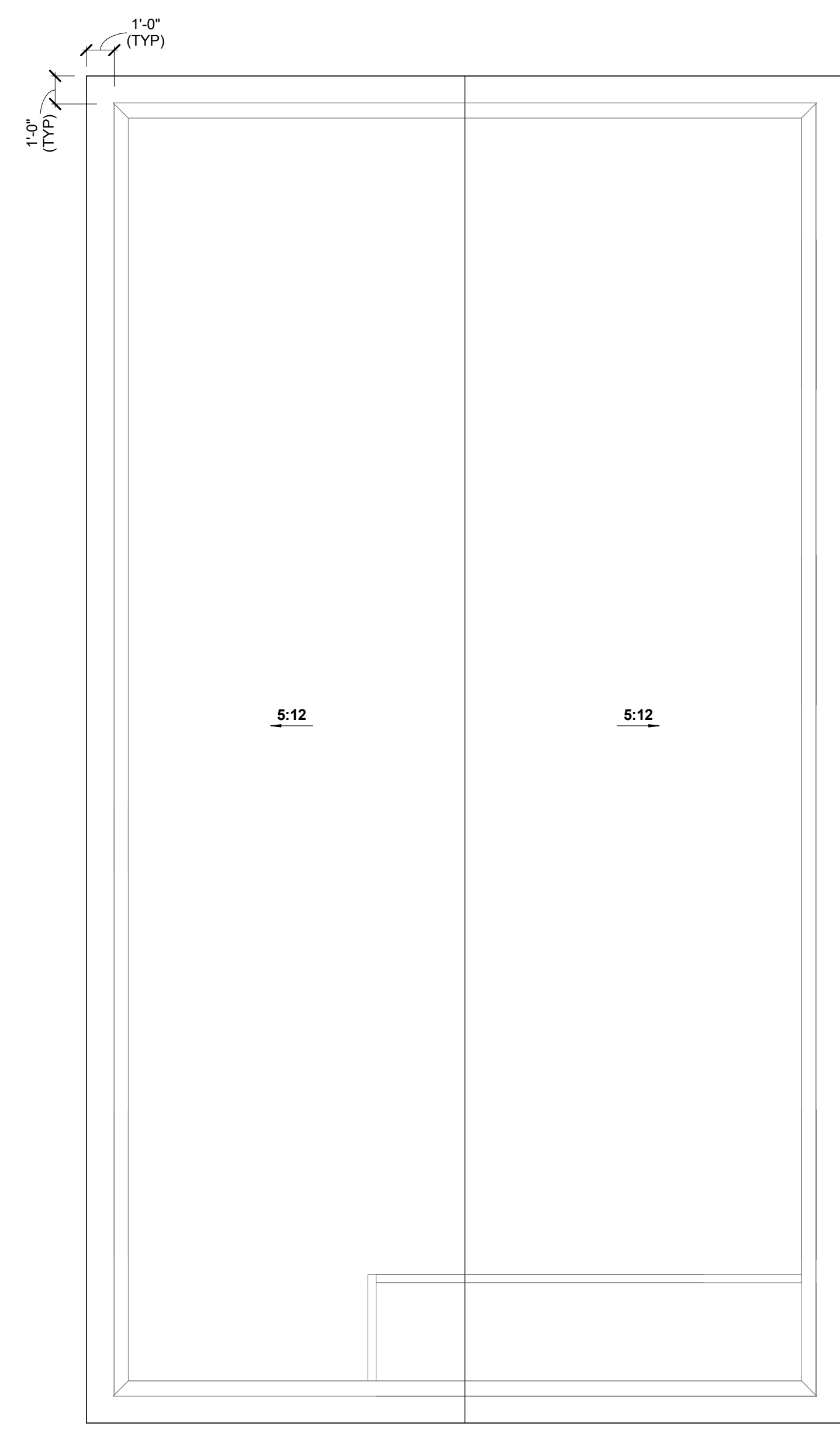
No.	Description	Date

A610



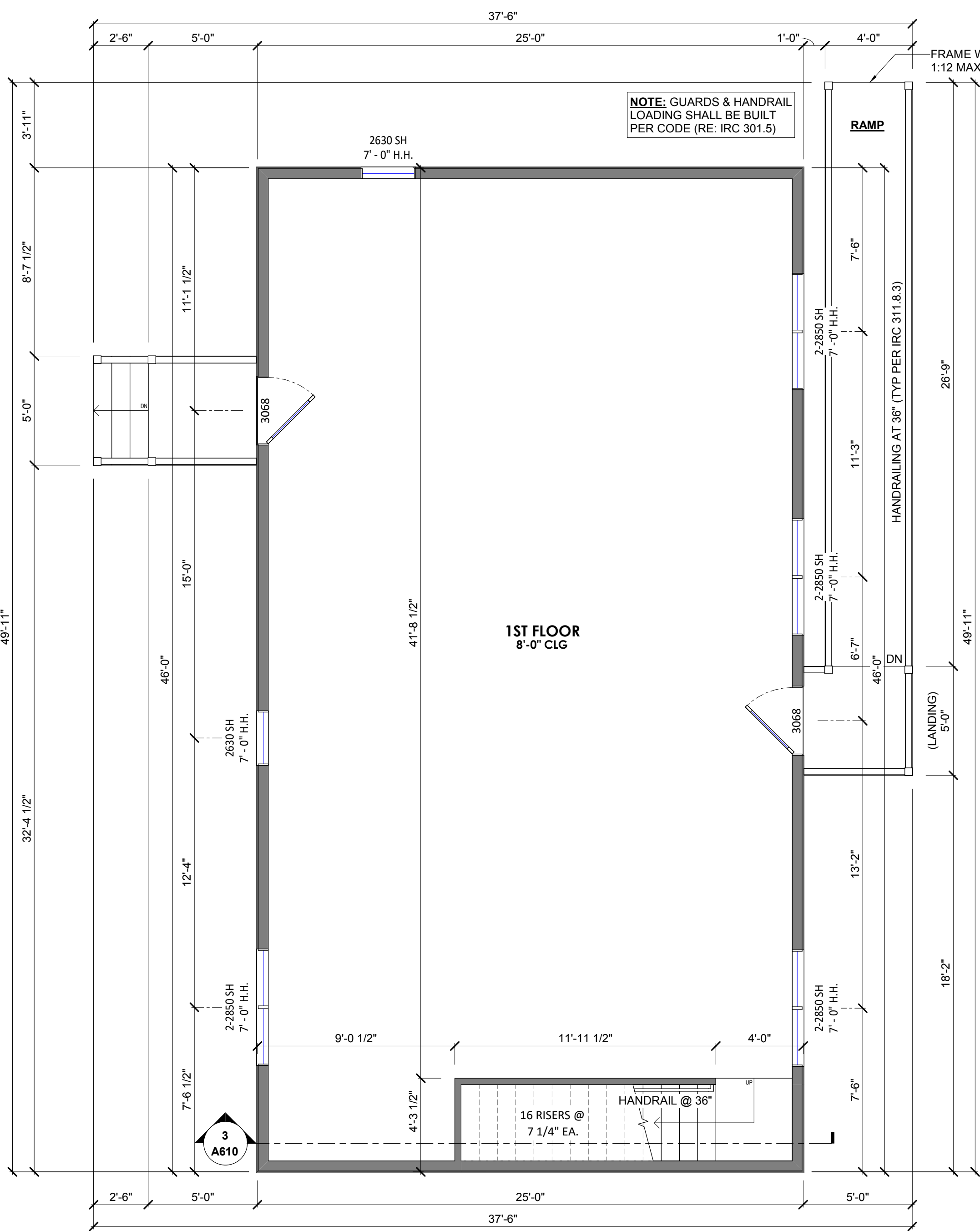
STAIR SECTION

1/4" = 1'-0" WHEN PRINTED ON 22"x34"



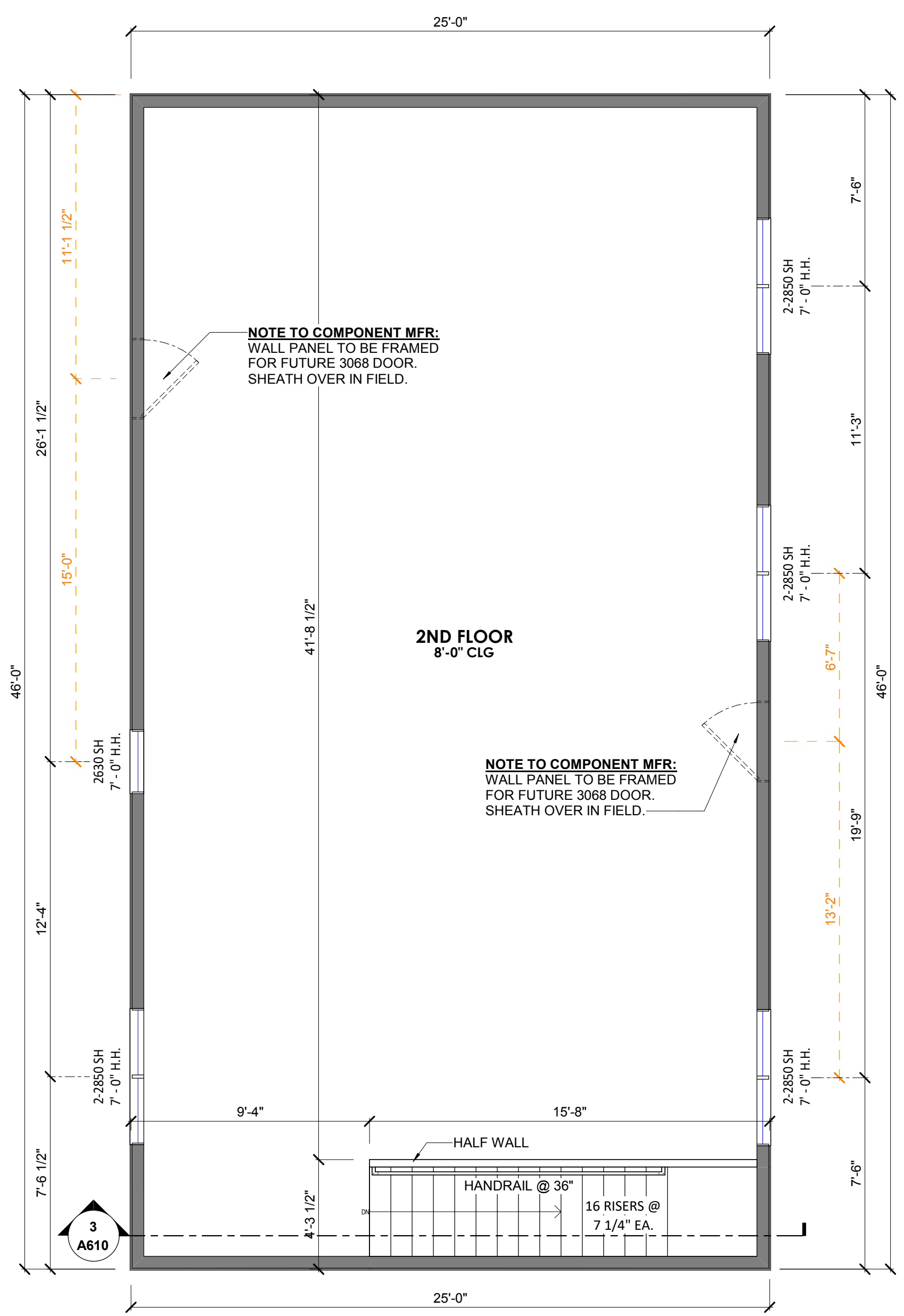
ROOF PLAN

1/4" = 1'-0" WHEN PRINTED ON 22"x34"



1st LEVEL FLOOR PLAN

1/4" = 1'-0" WHEN PRINTED ON 22"x34"



2nd LEVEL FLOOR PLAN

1/4" = 1'-0" WHEN PRINTED ON 22"x34"

APEX TECHNOLOGY IS A FICTITIOUS NAME OWNED BY JAY APEX TECHNOLOGY INC., A FLORIDA CORPORATION FLORIDA ENGINEER BUSINESS NO. 7647

DC MALL BUILD



9000 REGENCY SQUARE BLVD.
SUITE 100, JACKSONVILLE, FL 32211
904.821.5200

DO NOT SCALE THESE DRAWINGS - DRAWINGS SCALE IS 80% OF DESIGNATED SCALE IF PRINTED ON 11"x17" MEDIA

UPDATE ME

**PLAN # and
NAME**
BASE PLAN
PROJECT SERIES

SUBDIVISION

--

PROJECT NO:

2023.003545

DRAWN:

ZP

CHECKED:

DR

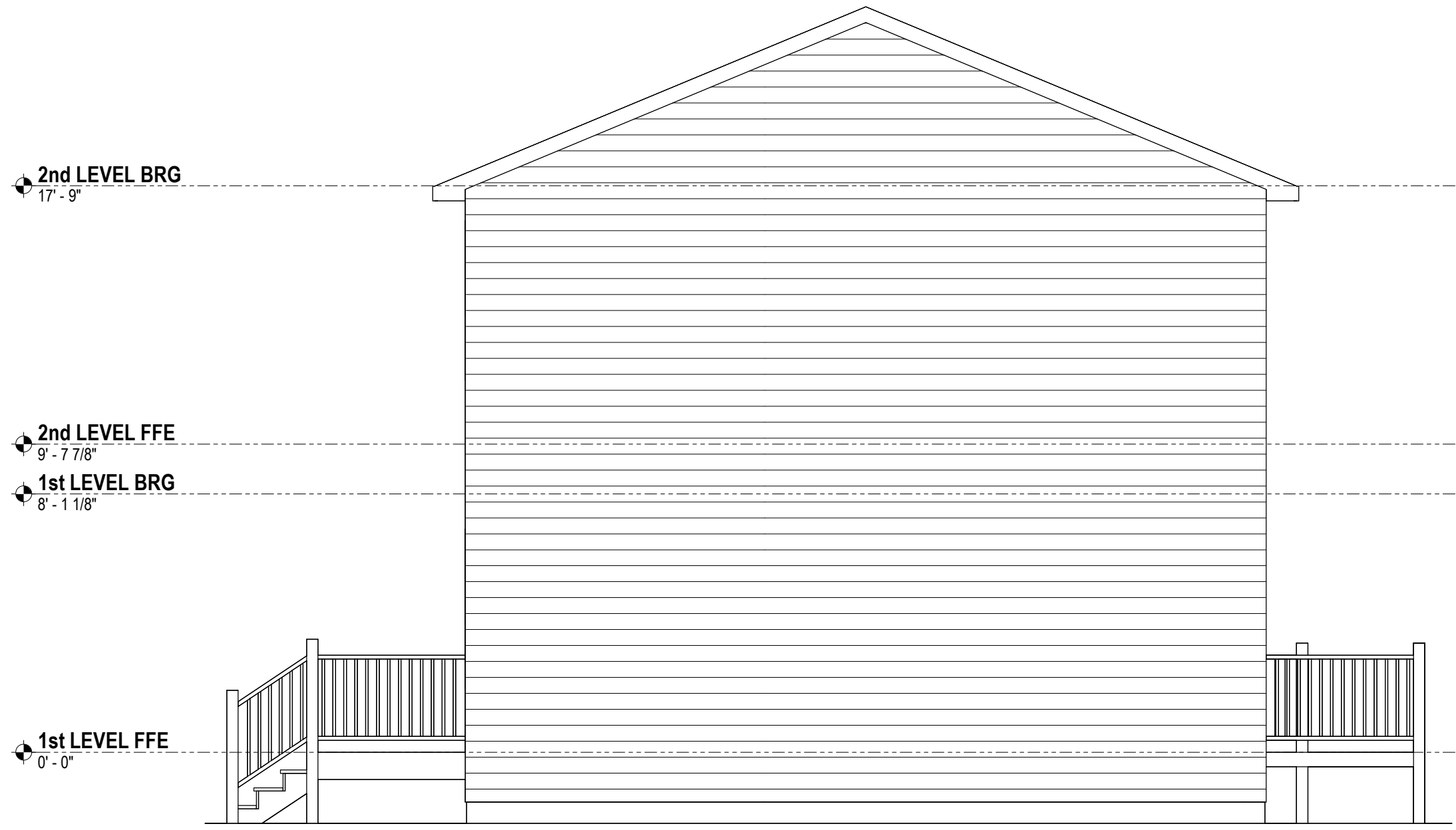
04-27-2023

REVISIONS:

No.	Description	Date

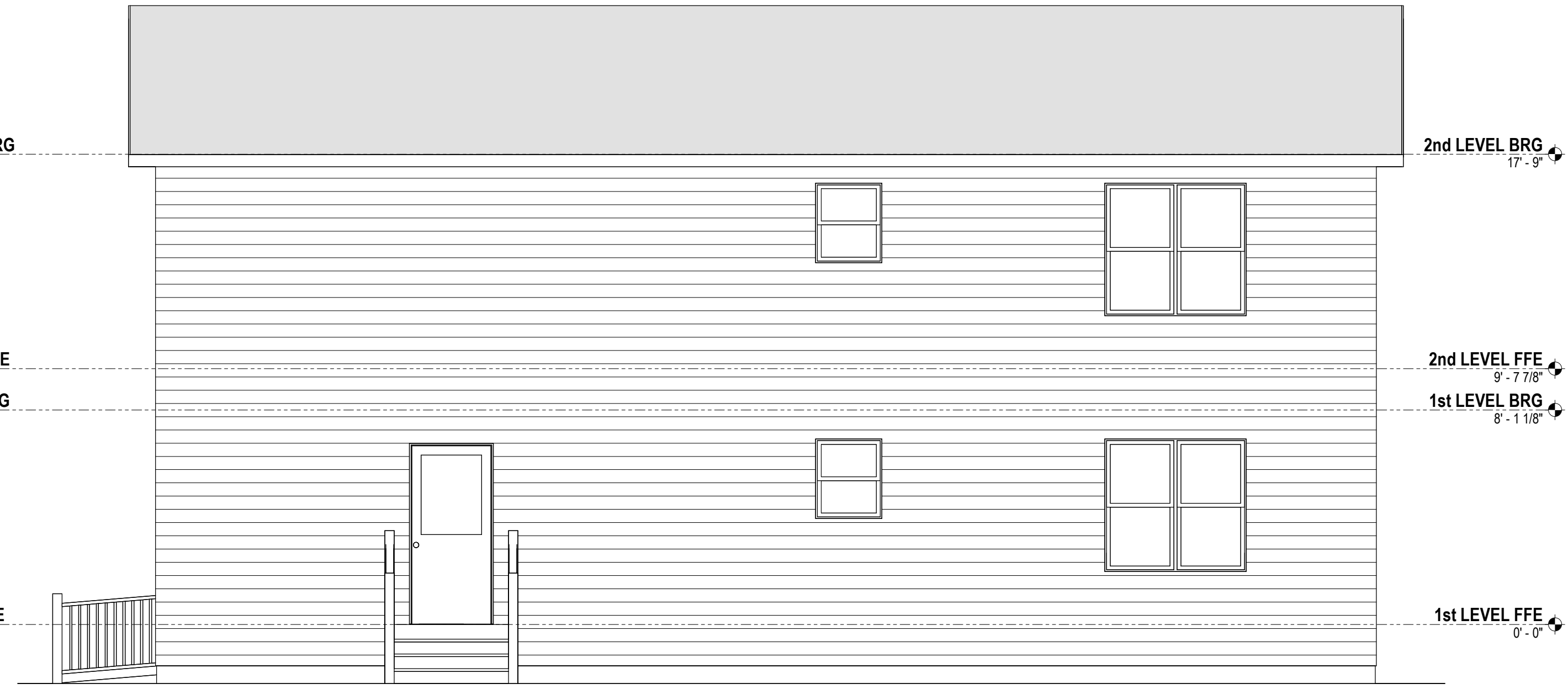
A700

APEX TECHNOLOGY IS A FICTITIOUS NAME OWNED BY JAY APEX TECHNOLOGY INC., A FLORIDA CORPORATION FLORIDA ENGINEER BUSINESS NO. 7447



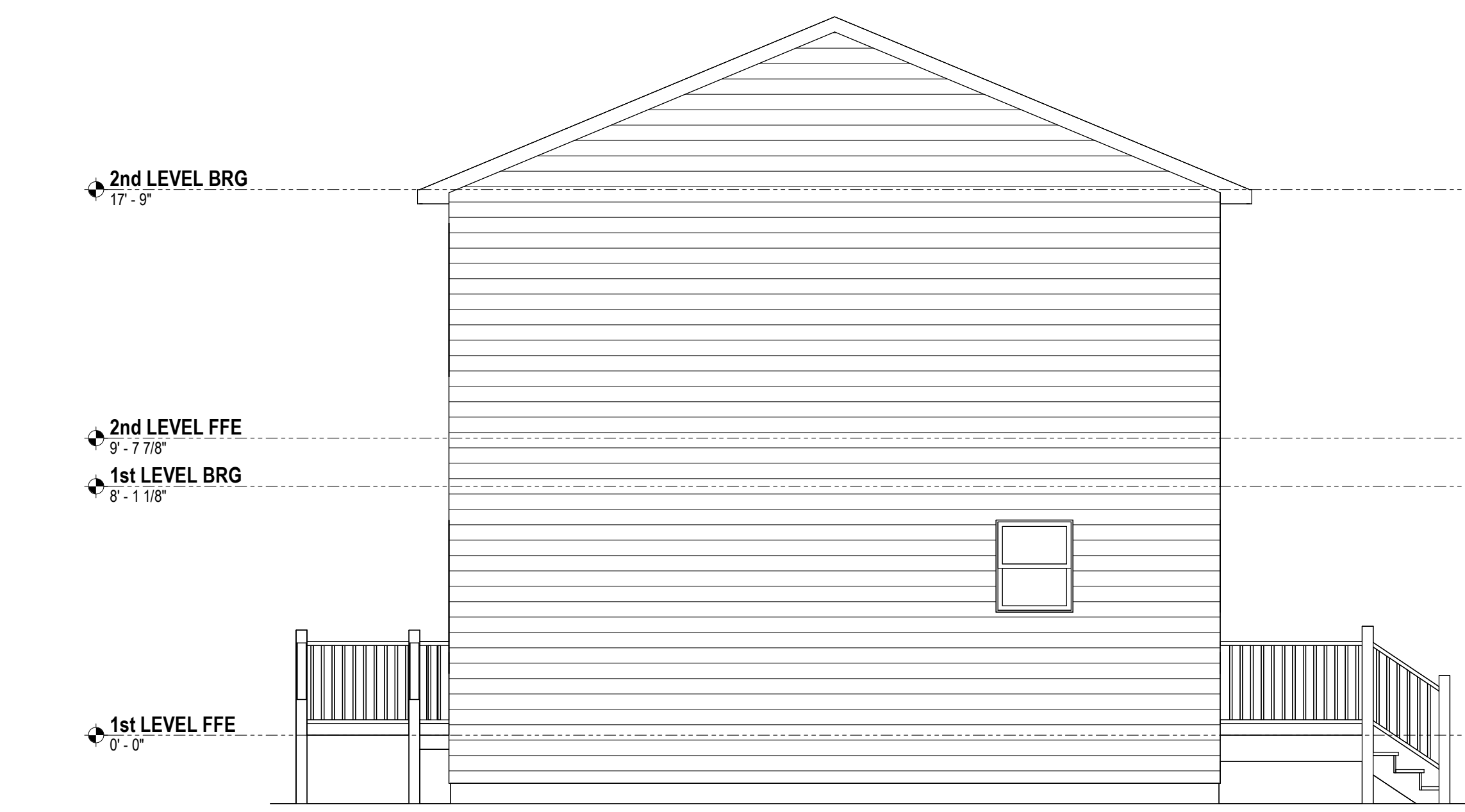
LEFT ELEVATION

1/4" = 1'-0" WHEN PRINTED ON 22"x34"



REAR ELEVATION

1/4" = 1'-0" WHEN PRINTED ON 22"x34"



RIGHT ELEVATION

1/4" = 1'-0" WHEN PRINTED ON 22"x34"



FRONT ELEVATION

1/4" = 1'-0" WHEN PRINTED ON 22"x34"