

A stylized map of King County, Washington, with various locations labeled in white text on a dark green background. The locations include Bothell, Woodinville, Duvall, Carnation, Sammamish, Fall City, Issaquah, Preston, Snoqualmie, North Bend, Snoqualmie Pass, Skykomish, and Stevens Pass. The map also features various icons representing nature (trees, mountains, a rabbit, a deer, a skier) and community (a person with a stroller, a house, a dog, a person on a bicycle).

# ONEREDMOND: STATE OF THE COUNTY

THURSDAY, MARCH 5

KING COUNTY DISTRICT 3  
**COUNCILMEMBER SARAH PERRY**

206-477-1003

[Sarah.Perry@kingcounty.gov](mailto:Sarah.Perry@kingcounty.gov)

[www.kingcounty.gov/perry](http://www.kingcounty.gov/perry)

# The Deets of D3 and Redmond!

## District 3

175,000 residents within city limits

75,000 residents in unincorporated

\$163,570 Median Household Income

22% Renters and 78% Homeowners

25.9% Youth

12.9% Seniors

3.1% Veterans

4.7% Living in Poverty (11,750 people)

2.8% on SNAP/Food Assistance

## Redmond

82,380 residents within city limits

25,600 residents in unincorporated

\$177,877 Median Household Income

50% Renters and 50% Homeowners

22.7% Youth

12.2% Seniors

2.6% Veterans

5.8% Living in Poverty (6,263 people)

3.1% on SNAP/Food Assistance

# D3 and Redmond's Top 5 Priorities in 2025!

## District 3

-  Road & Bridge Infrastructure
-  Safe & Healthy Communities
-  Environment
-  Housing & Affordability
-  Transit & Mobility

## Redmond

-  Safe & Healthy Communities
-  Road & Bridge Infrastructure
-  Environment
-  Transit & Mobility
-  Housing & Affordability

# Priority #1: Safe & Healthy Communities

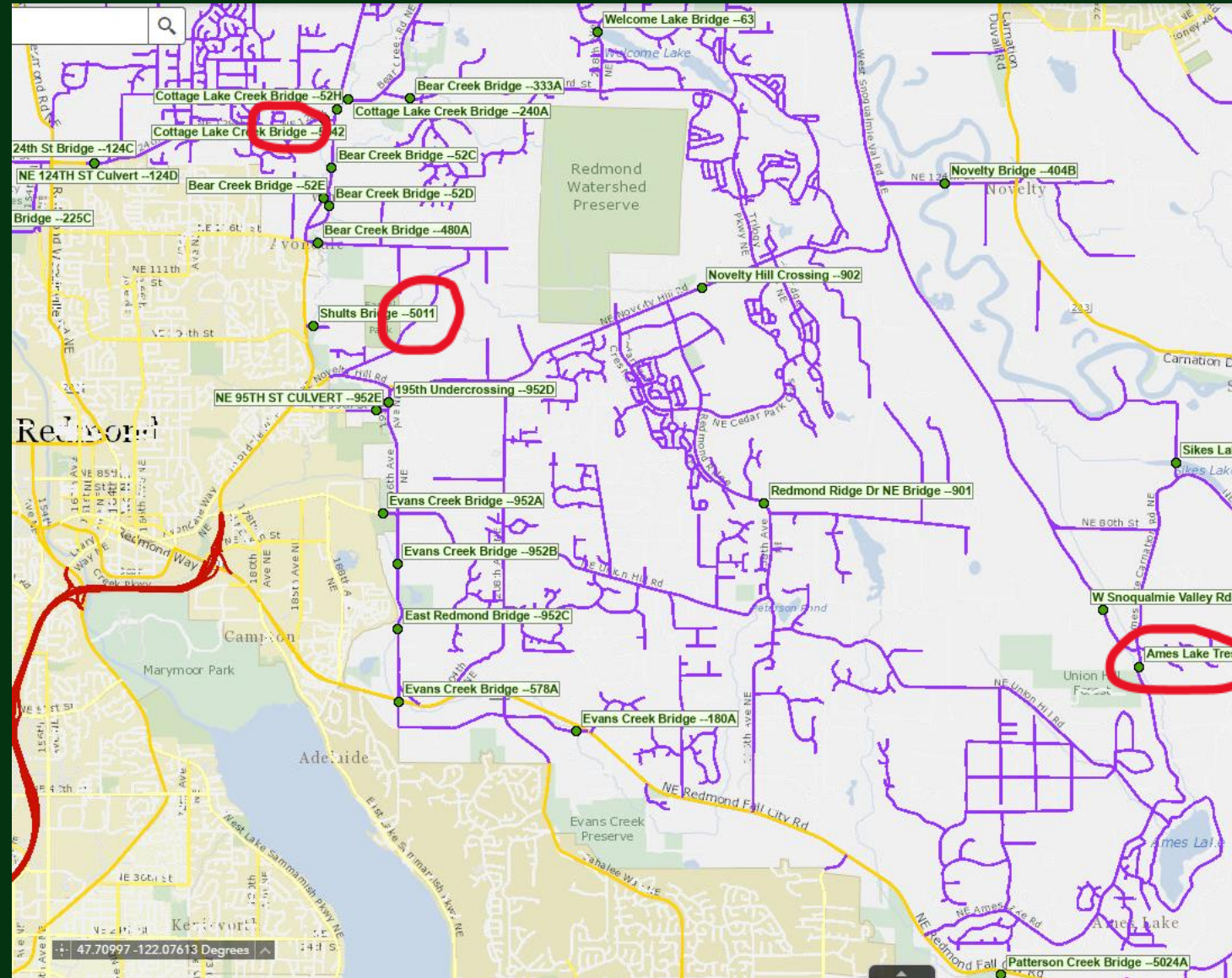
- Post-flood and post-bomb cyclone collaboration with Comcast, Xfinity, PSE, and KC Emergency Management to further improve emergency comms with first responders, cities, and residents
- Successfully restored standard sheriff deputy staffing levels to our unincorporated communities
- Six new park rangers patrolling parks and trails, including Marymoor Park and Sammamish River Trail for added safety



*King County Unincorporated Area Emergency Communications Coordination Meeting*

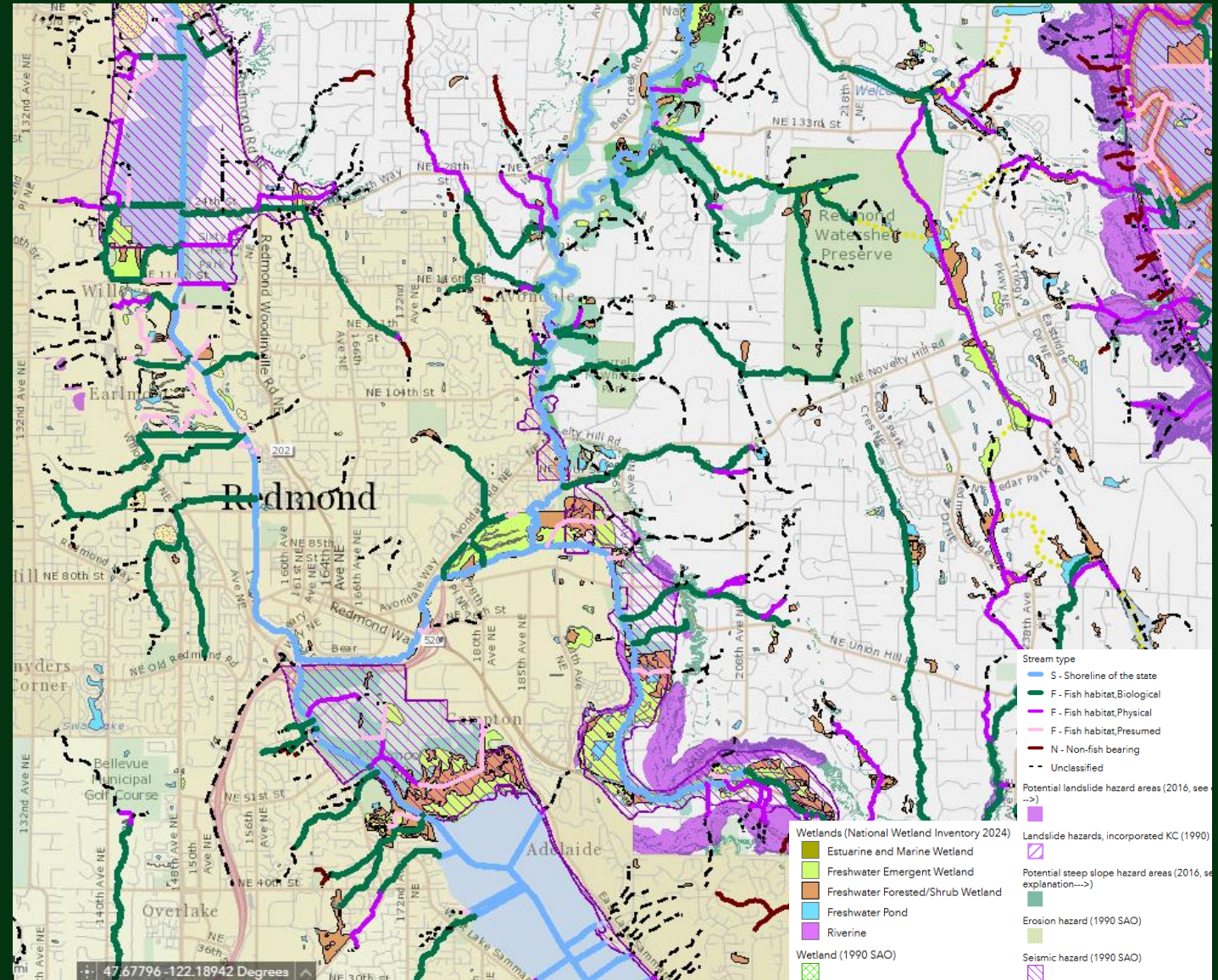
# Priority #2: Road & Bridge Infrastructure

- Invested \$7.6M to replace 100-year-old Ames Lake Trestle Bridge, ensuring structural capacity for emergency vehicles and large trucks
- Allocated \$750K in 2025-2026 for road-side guardrail updates off of Novelty Hill Road and across county
- Dedicated \$1.76M to replacing a rusting culvert under NE 128th Street in North Redmond, allowing smoother fish passage and preventing flooding



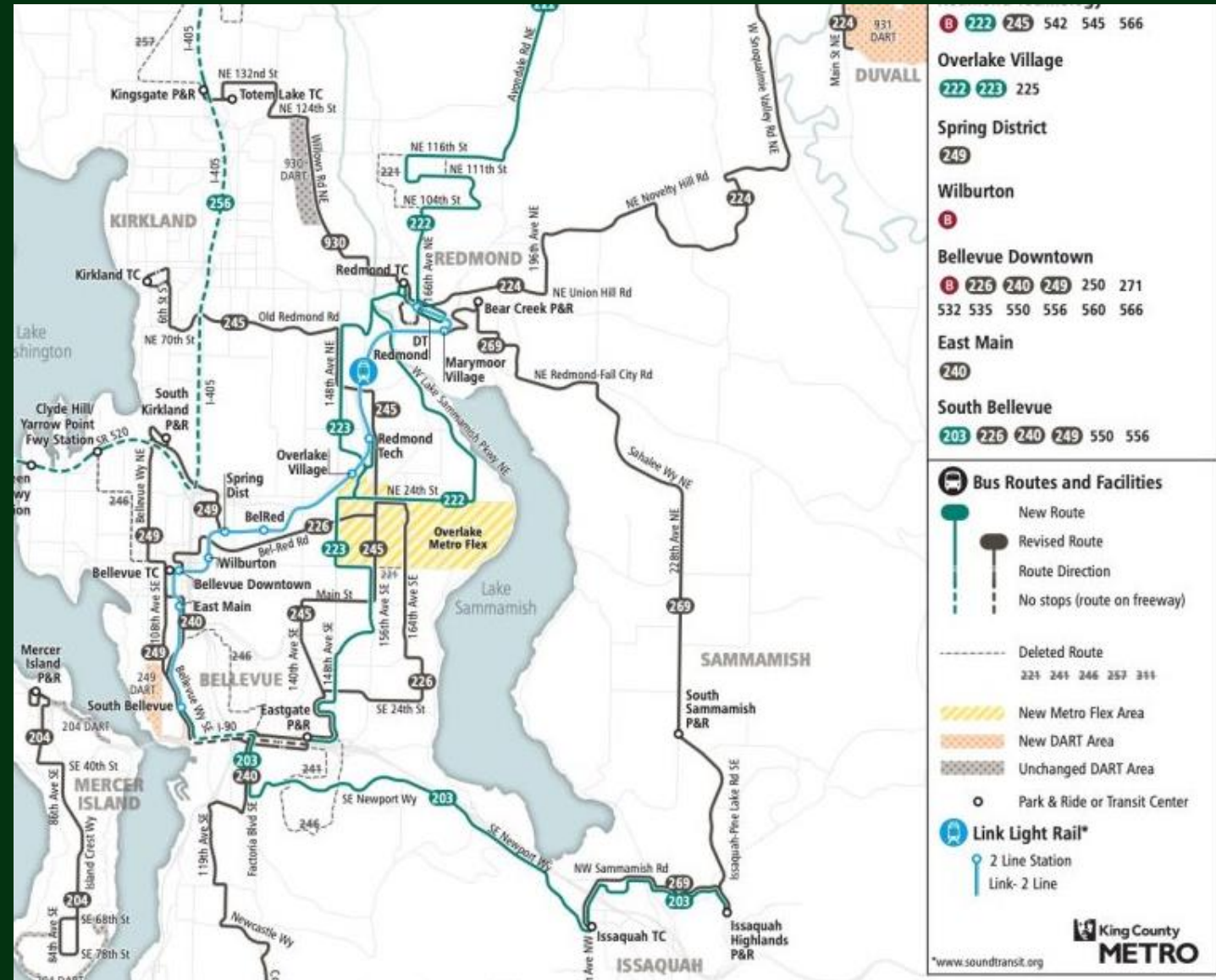
# Priority #3: Environment

- Led the 10-year update to the Critical Areas Ordinance, protecting forests, rivers & wetlands and mitigating flood risks
- Invested \$954K in water quality monitoring, habitat restoration, and salmon protection in Lake Sammamish and tributaries
- Dedicated \$10M for open space, forest, and wetlands, contributing to the continued conservation of the Ames Lake Forest, Union Hill Forest, and Bear Creek



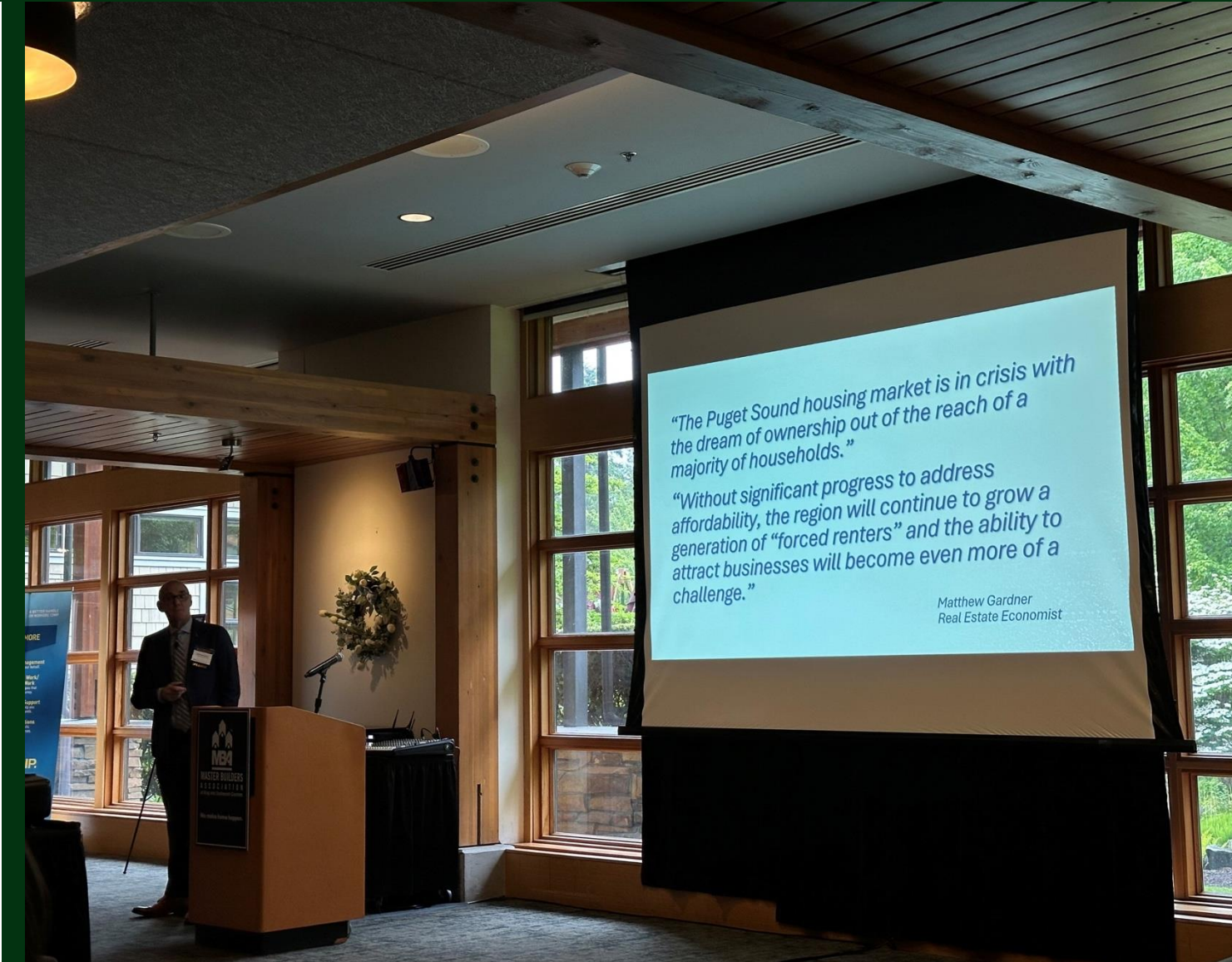
# Priority #4: Transit & Mobility

- Provided \$50,000 to Sound Generations to provide additional Hyde Shuttle services for seniors and people with disabilities
- Co-sponsored East Link Connections Ordinance, legislation to re-route busses throughout Redmond with the opening of East Link light rail
- Added 900+ weekly bus trips across the county and new routes 222 and 223, connecting Redmond to Cottage Lake and Eastgate/Factoria



# Priority #5: Housing & Affordability

- Testified at state legislature to expand property tax relief to coincide with COLA, helping seniors age in place
- Promoted affordable housing in unincorporated King County and inclusionary zoning policies to incentivize building through 10-year Comprehensive Plan update
- Added provisions to zoning code encouraging the building of multi-family housing projects that include daycare and social services through working with MBA bi-monthly



# What's Next?

**Safe & Healthy Communities:** Federal disaster relief loans now available for businesses impacted by the historic flooding this past December. The Small Business Administration has opened a Disaster Loan Outreach Center in the Fall City Library (33415 SE 42<sup>nd</sup> Place, Fall City, WA 98024), open Monday through Saturday. Plus, joining the Redmond Fire Department for a stakeholder meeting about their 2027-2032 Strategic Plan.

**Road & Bridge Infrastructure:** Lead on new and innovative investments road and bridge safety and maintenance for the over 1M drivers per day, with 50% from cities and 50% from unincorporated, through utilizing the King County Transportation Benefit District.



Scan to access  
SBA disaster  
relief loan page!



# What's Next?

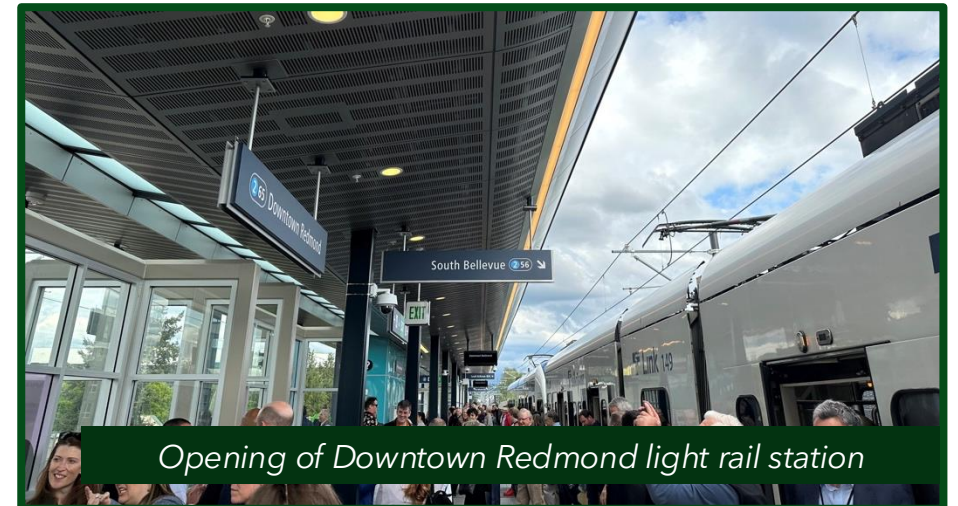
**Environment:** Opening applications for District 3 Community Climate Resilience grants - \$91,666 available to non-profit organizations in our district for projects that protect our environment and make our communities more resilient to climate changes like increased heat, flooding, etc.

**Transit & Mobility:** Opening of light rail across the I-90 floating bridge, connecting Redmond to Seattle in a first for the world! Plus, beginning final phase of East Link Connections, integrating light rail into our transit system and bringing more service and frequency to bus routes.

**Housing & Affordability:** Engaging with key stakeholders like Master Builders Association on creating a multi-family housing tax exemption (MFTE) program at the county.



*Councilmember Perry in the Council chambers*



*Opening of Downtown Redmond light rail station*

# Thank You! Questions?



Sarah.Perry@kingcounty.gov



206-477-1003



[www.kingcounty.gov/perry](http://www.kingcounty.gov/perry)



@Councilmember.Perry



@councilmember.sarahperry

