

MHC Consultants LLC

Installer's Warranty Seals
 Guarantee from the Installer
 - Installed per code
 - Installer Certified by DOS
 - Foundation approved

Also req. for "Owner-occupant"

164

MHC Consultants LLC

Permanently attached
 - Largest closet in the largest bedroom

165

Comanikants LLC

Permanently at
 - Largest closet


166

MHC Consultants LLC

Installer's Warranty Seals
No CO shall be issued !!!

- After January 1, 2006
- UNLESS:
 - Manufacturer's seal is attached

AND



167

MHC Consultants LLC

Installer's Warranty Seals
No CO shall be issued !!!

- After January 1, 2006
- UNLESS:
 - Manufacturer's seal is attached

AND

1210.16(g) No authority having jurisdiction shall issue a CofO for any MH unless...
 "the installer's warranty seal...has been attached to such manufactured home;"



168

MHC Consultants LLC

The government entity shall NOT RELY on the Installer's Seal
 Independent inspection of the installation must be made



169

C. Consultants LLC

The government contractor must be made independent ins




170

The go
Indep



nts LLC

al
ade



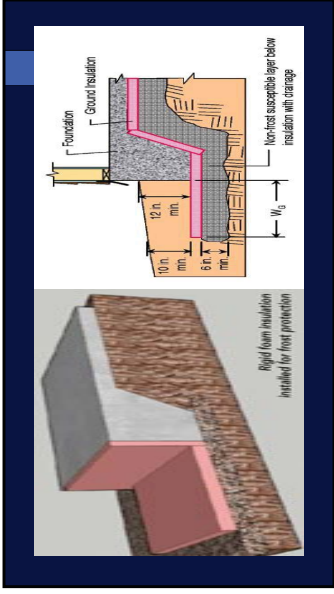
171

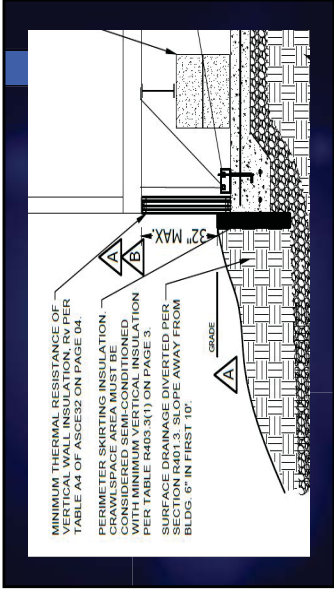
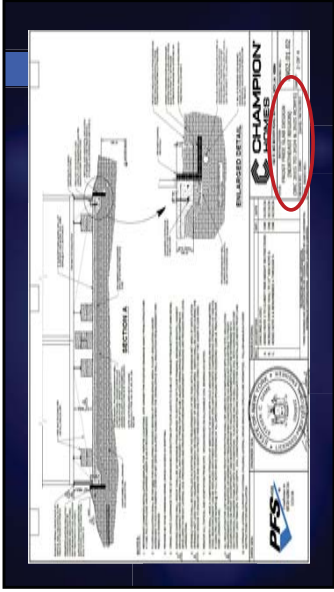


Department of State
Higher Education & Career

- pen complaints.
- New complaints received since the beginning of this year.
- Complaints sent to the Office of Administrative Hearings for formal resolution. 12







NOTES:

1. THE CHAIRS OR INSULATION MAXIMUM FOR PERITE (CATIONS) SITE GRADE FOR POSITIVE DRAINAGE AWAY FROM STRUCTURE.
2. A 1/2" TYP. TO THE LINE VAPOR BARRIER UNDER SLAB IS REQUIRED NOTED.
3. FLOOR INSULATION SHALL BE FOR **RAM** FOR DEVELOPING PASSIVE HEATING OF GARAGE/SPACE AREA. FLOOR INSULATION CAN BE EITHER PERITE OR ENERGY STOR OR NET ZERO QUALIFIED HOMES WHEN THE GARAGE/SPACE WALL INSULATION REQUIREMENT PER IRC IS ENABLED.
4. PROVIDE AN 1/4" TYP. MINIMUM GASKET SPACE ACCESS IN SKIRTING.
5. EXPOSED SKIRTING WALL HEIGHT SHALL BE 3" MAXIMUM BELOW BOTTOM OF FLOOR JOISTS TO SLAB 12" MINIMUM FROM BOTTOM OF MAIN BEAM.
6. OVERLAP VENTS SHALL BE INSTALLED IN SKIRTING PER THE REQUIREMENTS OF IRC AND WITH A MINIMUM NET AREA OF VENTILATION. GROUND CONTACT RATED MATERIALS SHALL NOT EXCEED 2" FROM TOP OF SLAB. THE GASKET SPACE ENGINEERING SKIRTING PER IRC SHALL BE INSTALLED. SEAL PRESSURES AND PROPER BUSHING/FASTENMENT POSITIONING ARE TO BE SET FOR LOCAL JURISDICTION.
7. REMOVE ALL TOPSOIL AND VEGETATION FROM SITE. DESIGN BASED ON ALLOWABLE SOIL BEARING AS NOTED.
8. CONCRETE SHALL HAVE A COMPRESSIVE STRENGTH OF 3000 PSI AT 28 DAYS WITH COLD WEATHER EXPOSURE RATED 180°F PARAMETERS. IF LOCAL CODE USE 4000 PSI. THE C.C. BOTH WAYS EXTENDING TO ALL EXTERIOR WALLS AND PERCH EXCEEDING 12,000 LB. REACTION PER HOME (LOADING PLAN).
9. ALL INSULATION FOR USE IN BELOW GRADE PROTECTION SHALL BE LABELED IN COMPLIANCE WITH ASTM C209. INSULATION CHARACTERISTICS AND PERFORMANCE SHALL BE LABELED IN COMPLIANCE WITH ASTM C209. THE R VALUE OF INSULATION ON FROST SUSCEPTIBILITY AND MODIFICATIONS TO INSULATION REQUIREMENTS MUST BE DETERMINED BY A REGISTERED PROFESSIONAL ENGINEER. THE R VALUE OF INSULATION SHALL BE LABELED IN COMPLIANCE WITH ASTM C209. THE R VALUE OF INSULATION SHALL BE LABELED IN COMPLIANCE WITH ASTM C209. THE R VALUE OF INSULATION SHALL BE LABELED IN COMPLIANCE WITH ASTM C209.
10. ALTERNATE LATERAL SUPPORT SYSTEMS (LATERAL CHAIR BRACING SYSTEMS) ARE PERMITTED. FOLLOW MANUFACTURER'S INSTALLATION INSTRUCTIONS FOR INSULATION.

TABLE 1803.2.1 FLOOR JOIST PROTECTION FOR PERITE/PERITE PROTECTORS IN RELATED BUILDINGS

JOIST TYPE	PROTECTION TYPE	MINIMUM PROTECTION HEIGHT (IN)	MINIMUM PROTECTION WIDTH (IN)
2x8	Perite	12	12
	Perite Protector	12	12
2x10	Perite	12	12
	Perite Protector	12	12
2x12	Perite	12	12
	Perite Protector	12	12
2x14	Perite	12	12
	Perite Protector	12	12
2x16	Perite	12	12
	Perite Protector	12	12
2x18	Perite	12	12
	Perite Protector	12	12
2x20	Perite	12	12
	Perite Protector	12	12
2x22	Perite	12	12
	Perite Protector	12	12
2x24	Perite	12	12
	Perite Protector	12	12
2x26	Perite	12	12
	Perite Protector	12	12
2x28	Perite	12	12
	Perite Protector	12	12
2x30	Perite	12	12
	Perite Protector	12	12
2x32	Perite	12	12
	Perite Protector	12	12
2x34	Perite	12	12
	Perite Protector	12	12
2x36	Perite	12	12
	Perite Protector	12	12
2x38	Perite	12	12
	Perite Protector	12	12
2x40	Perite	12	12
	Perite Protector	12	12
2x42	Perite	12	12
	Perite Protector	12	12
2x44	Perite	12	12
	Perite Protector	12	12
2x46	Perite	12	12
	Perite Protector	12	12
2x48	Perite	12	12
	Perite Protector	12	12
2x50	Perite	12	12
	Perite Protector	12	12
2x52	Perite	12	12
	Perite Protector	12	12
2x54	Perite	12	12
	Perite Protector	12	12
2x56	Perite	12	12
	Perite Protector	12	12
2x58	Perite	12	12
	Perite Protector	12	12
2x60	Perite	12	12
	Perite Protector	12	12
2x62	Perite	12	12
	Perite Protector	12	12
2x64	Perite	12	12
	Perite Protector	12	12
2x66	Perite	12	12
	Perite Protector	12	12
2x68	Perite	12	12
	Perite Protector	12	12
2x70	Perite	12	12
	Perite Protector	12	12
2x72	Perite	12	12
	Perite Protector	12	12
2x74	Perite	12	12
	Perite Protector	12	12
2x76	Perite	12	12
	Perite Protector	12	12
2x78	Perite	12	12
	Perite Protector	12	12
2x80	Perite	12	12
	Perite Protector	12	12
2x82	Perite	12	12
	Perite Protector	12	12
2x84	Perite	12	12
	Perite Protector	12	12
2x86	Perite	12	12
	Perite Protector	12	12
2x88	Perite	12	12
	Perite Protector	12	12
2x90	Perite	12	12
	Perite Protector	12	12
2x92	Perite	12	12
	Perite Protector	12	12
2x94	Perite	12	12
	Perite Protector	12	12
2x96	Perite	12	12
	Perite Protector	12	12
2x98	Perite	12	12
	Perite Protector	12	12
2x100	Perite	12	12
	Perite Protector	12	12

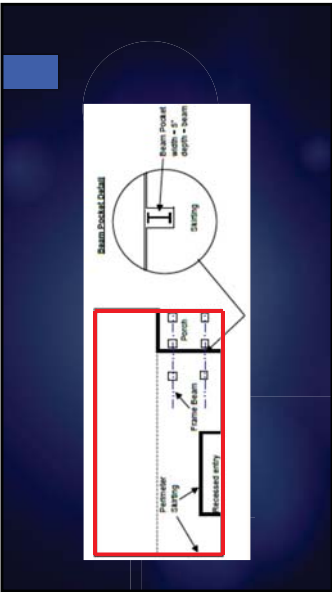
IRC 2018 / 2020 RCNYS FIGURE R403.3(1)

TABLE 1803.2.1 FLOOR JOIST PROTECTION FOR PERITE/PERITE PROTECTORS IN RELATED BUILDINGS

JOIST TYPE	PROTECTION TYPE	MINIMUM PROTECTION HEIGHT (IN)	MINIMUM PROTECTION WIDTH (IN)
2x8	Perite	12	12
	Perite Protector	12	12
2x10	Perite	12	12
	Perite Protector	12	12
2x12	Perite	12	12
	Perite Protector	12	12
2x14	Perite	12	12
	Perite Protector	12	12
2x16	Perite	12	12
	Perite Protector	12	12
2x18	Perite	12	12
	Perite Protector	12	12
2x20	Perite	12	12
	Perite Protector	12	12
2x22	Perite	12	12
	Perite Protector	12	12
2x24	Perite	12	12
	Perite Protector	12	12
2x26	Perite	12	12
	Perite Protector	12	12
2x28	Perite	12	12
	Perite Protector	12	12
2x30	Perite	12	12
	Perite Protector	12	12
2x32	Perite	12	12
	Perite Protector	12	12
2x34	Perite	12	12
	Perite Protector	12	12
2x36	Perite	12	12
	Perite Protector	12	12
2x38	Perite	12	12
	Perite Protector	12	12
2x40	Perite	12	12
	Perite Protector	12	12
2x42	Perite	12	12
	Perite Protector	12	12
2x44	Perite	12	12
	Perite Protector	12	12
2x46	Perite	12	12
	Perite Protector	12	12
2x48	Perite	12	12
	Perite Protector	12	12
2x50	Perite	12	12
	Perite Protector	12	12
2x52	Perite	12	12
	Perite Protector	12	12
2x54	Perite	12	12
	Perite Protector	12	12
2x56	Perite	12	12
	Perite Protector	12	12
2x58	Perite	12	12
	Perite Protector	12	12
2x60	Perite	12	12
	Perite Protector	12	12
2x62	Perite	12	12
	Perite Protector	12	12
2x64	Perite	12	12
	Perite Protector	12	12
2x66	Perite	12	12
	Perite Protector	12	12
2x68	Perite	12	12
	Perite Protector	12	12
2x70	Perite	12	12
	Perite Protector	12	12
2x72	Perite	12	12
	Perite Protector	12	12
2x74	Perite	12	12
	Perite Protector	12	12
2x76	Perite	12	12
	Perite Protector	12	12
2x78	Perite	12	12
	Perite Protector	12	12
2x80	Perite	12	12
	Perite Protector	12	12
2x82	Perite	12	12
	Perite Protector	12	12
2x84	Perite	12	12
	Perite Protector	12	12
2x86	Perite	12	12
	Perite Protector	12	12
2x88	Perite	12	12
	Perite Protector	12	12
2x90	Perite	12	12
	Perite Protector	12	12
2x92	Perite	12	12
	Perite Protector	12	12
2x94	Perite	12	12
	Perite Protector	12	12
2x96	Perite	12	12
	Perite Protector	12	12
2x98	Perite	12	12
	Perite Protector	12	12
2x100	Perite	12	12
	Perite Protector	12	12







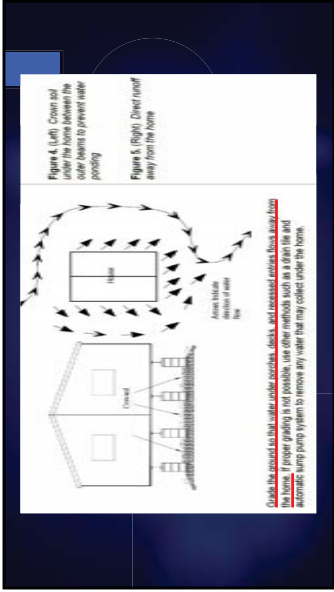


Figure 4. (Left) Down spout under the home between the side rooms to prevent water pooling

Figure 5. (Right) Direct runoff away from the home



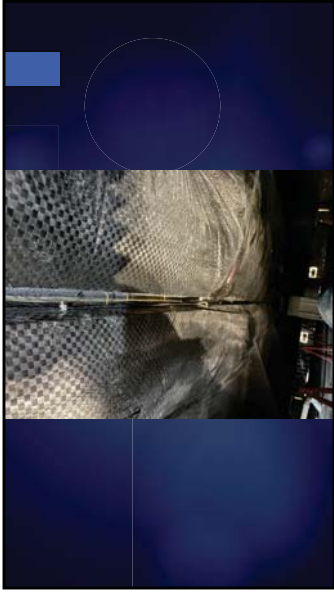


TABLE 13. FLOOR CONNECTION FASTENING SPECIFICATIONS

Fastener Type	Size	Spacing		
		Wind Zone I	Wind Zone II	Wind Zone III
Lag screw	5/16" x 6"	36 in.	20 in.	16 in.
Wood screw	#10 x 6"	24 in.	8 in.	6 in.

* Increase fastener lengths by 2 inches for double rim joists.
 - Fastener lengths are minimum. Longer fasteners may be used as required.
 - Fastener throat diameter is minimum, however pilot holes are required for fastener diameters over 5/16"

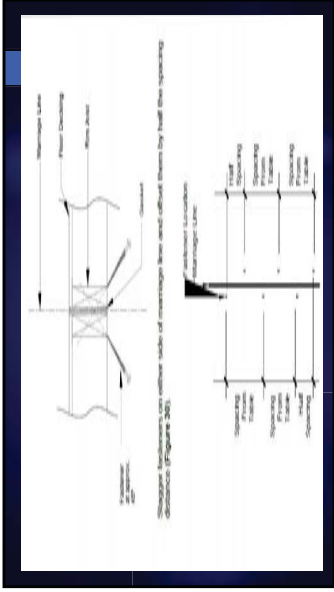
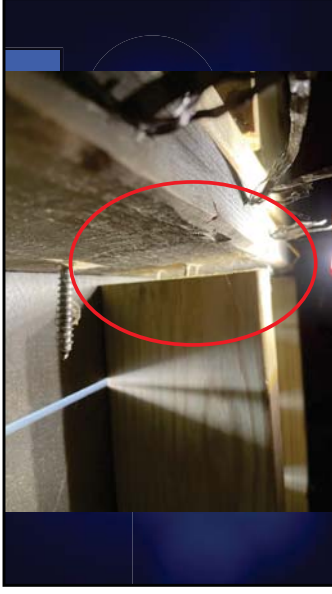
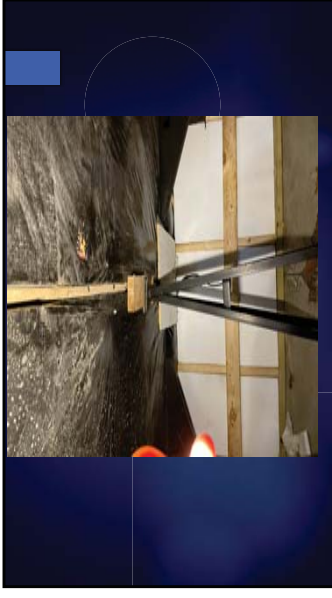




Figure 29. Floor connection through bottom board (Fasteners must penetrate the rim joist by a minimum of 1½ inches)





6. Shim gaps. Shim any gaps up to one inch between structural elements with dimensional lumber, plywood or OSB, as needed. If any gaps exceed one inch, re-position the home to eliminate such gaps.



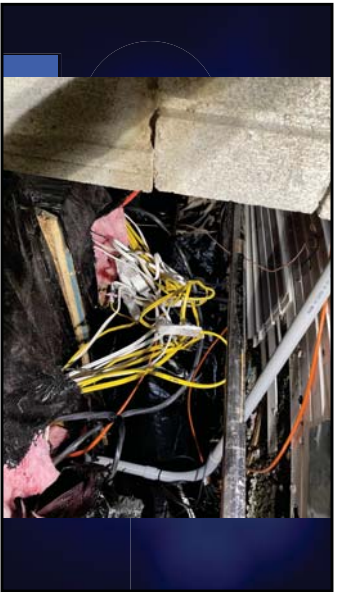
4. **Secure king posts.** Position the hinged king posts (may be a knee wall) atop the fixed king posts or against the wooden stop (Figure 20). The king posts are supported by the wooden stop or knee wall. Position them as needed to level the roof, aligning each king post with the king post directly beneath it, and securing it in place per hinged roof truss installation addendum.

The diagram illustrates a hinged roof truss. It shows a central hinged king post supported by a wooden stop. Labels include 'Hinged King Post', 'Wooden Stop', and 'King Post'. A circular inset provides a detailed view of the hinged king post's connection to the wooden stop.









manufactured.housing@doh.ny.gov



If it happens at the site the LAHJ has the right to inspect

- Including:
- work outside of HUD Code
 - not authorized by manufacturer
 - non DAPIA repairs



LAHJ =
Local Authority Having Jurisdiction

- If an owner contracts work themselves, they are still required to hire a certified entity to oversee the work and affix a warranty seal.



Application for Warranty Seal

<https://dos.ny.gov/code/manufactured-homes>

Application for Warranty Seal

<https://dos.ny.gov/code/manufactured-homes>



Application for Warranty Seal

<https://dos.ny.gov/code/manufactured-homes>



Where to mail form and payments:

New York State Department of State
Division of Building Standards & Codes
One Commerce Center
99 Washington Avenue
Albany, NY 12231

DOS 17024 (Rev. 12/25)

Warranty Seal Fees

Manufacturer's Seal	Purchase price from DOS	Maximum Allowed Attachment Fee
Installer Seal*	\$125	\$150
1 - 5:	\$35	\$50
6 or more:	\$25	

* Not for sale to "Limited Certificate" installer, and only one for "Owner-occupant" installer

MHC Consultants LLC

Installer's Quarterly Reporting

- Quarterly
- General Staff
 - Authorized signature
 - Name and address
 - Reporting period
- Home details
 - Warranty Seal No.
 - Owner
 - Certification that installation meets UFPBC




229

MHC Consultants LLC

Installer's Quarterly Reporting

- Quarterly
- General Staff
 - Authorized signature
 - Name and address
 - Reporting period
- Home details
 - Warranty Seal No.
 - Owner
 - Certification that installation meets UFPBC



230

MHC Consultants LLC

Installer's Quarterly Reporting

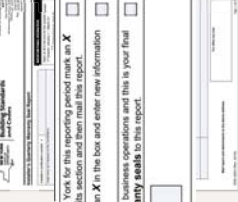
- Quarterly
- General Staff
 - Authorized signature
 - Name and address
 - Reporting period
- Home details
 - Warranty Seal No.
 - Owner
 - Certification that installation meets UFPBC

No homes installed this quarter? If yes, mark an X in the box if you are discontinuing your business operations and this is your final report. Attach your Certification and unused warranty seals to this report.

Has your address or business information changed? If so, call the Dept. of State at (919) 474-4073 or mark an X in the box and enter new information above.

Final Report? If so, mark an X in the box if you are discontinuing your business operations and this is your final report. Attach your Certification and unused warranty seals to this report.

Physical count of unused warranty seals remaining:



231

C Consultants LLC

For Manufacturers and Installers

Installer's Report

- Updated form c
- General Staff
 - DOS form
 - Name and add
 - Quarterly repoi

C Consultants LLC

For Manufacturers and Installers

Warranty Seal Report Form

Please select the type of warranty report to be submitted.*

- Installer's Quarterly Warranty Seal Report
- Manufacturer's Quarterly Warranty Seal Report
- Manufacturer's Monthly Warranty Seal Report

Submit

Powered by AutoSIS Systems LLC

C Consultants LLC

For Manufacturers and Installers

Warranty Seal Report Form

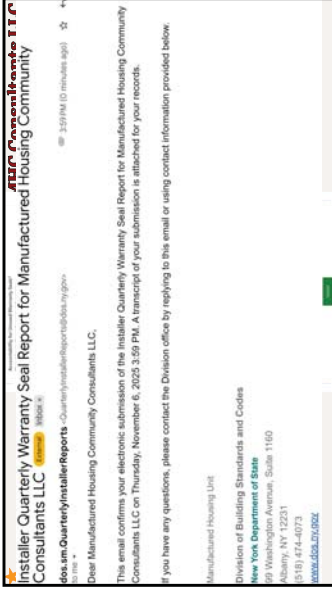
Please select the type of warranty report to be submitted.*

- Manufacturer's Quarterly Warranty Seal Report
- Manufacturer's Monthly Warranty Seal Report

Submit

Powered by AutoSIS Systems LLC







MHC Consultants LLC

Enforcement Actions

- Failure to file Quarterly Report
- Violation Article 21-B
 - Plea Agreement Settlement Letter
 - Fine amount \$100
 - Returned by indicated date – case closed
 - Failure or request for hearing then
- Referred to Office of Administrative Hearings
 - Fine Increased!!!
 - OAH moves ahead this hearing process



244

MHC Consultants LLC

Regulation: 19 NYCRR Part 1210 Warranties and Article 35 of General Business Law

§1210.16 (d)(3) "The warranties set forth in this subdivision shall be in addition to, and not in limitation of or substitution for, the warranty provided for in Article 35 of the General Business Law and any and all warranties, express or implied, given or made by the manufacturer, whether contractually or by operation of law."

245

MHC Consultants LLC

All new homes shall be covered by a warranty

- Protection from substantial defects in materials and workmanship
- Defect identified within One Year from Date of Delivery
- Consumer must give notice within 1 year and 10 days from Date of Delivery
- Manufacturer and Retailer to take appropriate corrective action within sixty days

246

Resolution of Disputes

§1210.18 (a) "Any homeowner, retailer, manufacturer, installer, mechanic, or lending entity may file a complaint with the Department of State seeking resolution of an allegation that a substantial defect exists in the delivered condition, installation, service or construction of a manufactured home."



Substantial defect shall mean "a defect or a number of defects or other conditions in the delivered condition, installation, service, or construction of a manufactured home which collectively can reasonably be expected to cost five hundred dollars or more to cure."

Dispute Resolution Complaint Filing Timeframe

§1210.18 (b) "A complaint relating to the delivered condition, installation, service or construction of a manufactured home shall be filed with the Department of State within 1 year & 10 days after the date of service, installation, issuance of a certificate of occupancy, or the expiration of a warranty, whichever is later."

MHC Consultants LLC

- Installation: May 15, 2024
- Date of CO: July 29, 2024
- Warranty Expiration: August 1, 2025

• May 25, 2025, "whichever is later,"

• **August 11, 2026**



256

MHC Consultants LLC

- Installation: May 15, 2024
- Date of CO: August 1, 2025
- Warranty Expiration: August 1, 2025

• May 25, 2025, "whichever is later,"

• **August 11, 2026**



257

MHC Consultants LLC

Dispute Resolution Process
Department of State Review

- Complaint valid or not
- Notification to parties involved
- Parties have 30 days to respond to DOS notification (21018(e))

258

MHC Consultants LLC

Informal Resolution

- The Codes Div. shall be permitted, but not required, to attempt to resolve any complaint informally
- Process may be commenced at any time after complaint filed

259

MHC Consultants LLC

Informal Resolution

- If Codes Division elects out or attempts are unsuccessful, referred to Office of Administrative Hearings



260

MHC Consultants LLC

Formal Resolution in front of a Law Judge

- Complainant v. Respondent



261

Formal Resolution in front of a Law Judge

- Complainant v. Respondent



Formal Resolution in front of a Law Judge

- Complainant v. Respondent
- Order compensation
- Apportion liability between multiple parties, where appropriate.

Formal Resolution in front of a Law Judge

- Complainant v. Respondent
- Order compensation
- Apportion liability between multiple parties, where appropriate.
- **Compensation shall not be limited to financial security amounts**

Appeal to the Secretary of State, Walter T. Mosley



Judicial Review

- Article 78 of Civil Practice Law and Rules
- New York Supreme Court
- Review agency actions
- Make determination



**Enforcement Actions
Civil Penalties**

- Violations of Executive Law 21-B
- or
- Violations of 24 CFR (as of July 14, 2025)
 - Up to **\$3,650** per single violation
 - Up to **\$4,562,282** for a series of related violations



Additional Enforcement Actions

- Sale of units to Uncert'd Retailer
- Business during Lapse of Cert
- Business while not Certified period
 - "Nothing...shall excuse any person or business entity required to be certified from the obligation of obtaining such certification."

Violations found during Retail Lot Audit

- Temporary Storage
- Dispute Notices
- Purchaser Cards
- Delivery Inspections
- Notifications to Manufacturer of complaints or non conformances

Violations found during Dispute Resolution

Additional action will be brought by DOS against the responsible party for any non-compliance concerning Manufacture, Sale, Installation or Service, not related to original complaint.

Suspension and Revocation of Certifications

- Substantial violation of Article 21-B or this Part
- Material misstatement in any application
- Fraud or fraudulent practices
- Dishonest or misleading advertising
- Untrustworthiness or incompetency
- Failed to comply with Article 21-B order
- Ceased to satisfy the financial responsibility
- Manufacturer ceased to be approved by HUD
- Failed to complete continuing education requirements





275



"If you don't have time to do it right, when will you have time to do it over?" - John Wooden

John Wooden is considered the greatest NCAA basketball coach of all time.

276

MHC Consultants LLC

**Residential Code, Appendix E:
Manufactured Housing Used as Dwellings**

2020 Residential Code of New York State
Effective: May 12, 2020-December 31, 2025




277

New Code

2025 Uniform Code

Based on 2024 I-Codes Published
in State Register: 10/1/25
90 Day Transitional Period
Effective Date: 12/31/25




MHC Consultants LLC

New Code


2025 Uniform Code
 Based on 2024 I-Codes Published
 in State Register: 10/1/25
 90 Day Transitional Period
 Effective Date: 12/31/25



MHC Consultants LLC

278

UFPBC Update



MHC Consultants LLC

279

UFPBC Update



Changes to the 2025 Residential Code of New York State.


MHC Consultants LLC

280

★

UFPBC Update

The overall layout and appearance of the Uniform Code has been modified.



MHC Consultants LLC

281

★

UFPBC Update


APPENDIX BA
MANUFACTURED HOUSING USED AS DWELLINGS

The appendices were reorganized and renamed to improve clarity and organization. Appendices related to building planning and construction were given the group B designation, and the Manufactured Housing appendix was renamed Appendix BA.

MHC Consultants LLC

282

Make sure that when you use plans, they reference the 2025 RCNYS, not the 2020 RCNYS.



MHC Consultants LLC

283

Make sure that when you use plans, they reference the 2025 RCNYS, not the 2020 RCNYS.

APPENDIX BA MANUFACTURED HOUSING USED AS DWELLINGS

Scope... applicable only to a *manufactured home used as a single dwelling unit* ...

- Foundations for Installation
- Connections to Services
- Alterations, additions, repairs or relocation
- Flood Zones

1. Construction, alteration and repair of any foundation system which is necessary to provide for the installation of a manufactured home unit.

MHC Consultants LLC

1. Construction, alteration and repair of any foundation system which is necessary to provide for the installation of a manufactured home unit
2. Construction, installation, addition, alteration, repair or maintenance of the building service equipment which is necessary for connecting manufactured homes to water, fuel, or power supplies and sewage systems

287

MHC Consultants LLC

1. Construction, alteration and repair of any foundation system which is necessary to provide for the installation of a manufactured home unit
2. Construction, installation, addition, alteration, repair or maintenance of the building service equipment which is necessary for connecting manufactured homes to water, fuel, or power supplies and sewage systems
3. **Alterations, additions or repairs to existing manufactured homes.** The construction, alteration, moving, demolition repair and use of accessory buildings and structures and their building service equipment shall comply with the requirements of this code.

288

MHC Consultants LLC

These provisions shall not be applicable to the design and construction of *manufactured homes* and shall not be deemed to authorize modifications or *additions* to *manufactured homes* where otherwise prohibited. The design and construction criteria of *manufactured homes* shall be in accordance with those defined in the "Manufactured Home Construction and Safety Standards" (24 CFR 3280).

289

R322.1.9 Manufactured Homes

- The bottom of the frame of new and replacement... shall be elevated to or above the elevation specified in R306.1.4 or R306.1.4.1

As built certification is required
 HUD places the burden on the installer to determine whether a home site is wholly or partly in a flood hazard area and to obtain additional designs, if needed.







[NY] BAI02.2 Additions

Additions shall conform to one of the following:

1. Certified under HUD Construction and Safety Standards Act
2. Designed and constructed to conform with HUD Construction...
3. Designed and constructed to conform with new construction requirements this code (RCNY)

Building additions and accessory structures shall not be structurally supported by the manufactured home.

Exception. Building additions and accessory structures supported by a MH shall be in accordance with designs provided by the home manufacturer or with designs prepared by a design professional in accordance with acceptable engineering practice.

[NY] BAI02.3 Alterations and repairs

Alterations and Repairs allowed without requiring compliance with all the requirements of the Uniform Code

- Must conform to requirements of Appendix BO
- Create no hazard to life, health or safety by such addition, alteration or repair

Alterations and Repairs nonstructural in nature, not affecting structural members or fire protection may be made with materials similar to original home construction

[NY] BAI02.5 Existing Occupancy

The use or occupancy of any existing manufactured home shall not be changed unless such change in use or occupancy is made to conform to all applicable provisions of this code. Upon any change in use or occupancy, the manufactured home shall cease to be classified as such



[NY] BAI04 Permits and Inspections

Permit shall be obtained to install, alter, remodel, repair or add accessory buildings or structures to a manufactured home...

Application for permit shall include the identity of the person or entity certified pursuant to Part 1210 or be obtained by the homeowner...

[NY] BAI04 Permits and Inspections

Permit shall be obtained to install, alter, remodel, repair or add accessory buildings or structures to a manufactured home...

Application for permit shall include the identity of the person or entity certified pursuant to Part 1210 or be obtained by the homeowner...

[NY] BA104 Permits and Inspections

Permit shall be obtained to install, alter, remodel, repair or add accessory buildings or structures to a manufactured home...

Application for permit shall include the identity of the person or entity certified pursuant to Part 1210 or be obtained by the homeowner...

Work shall be inspected – including, but not limited to the foundation, support, anchorage, connection of multi-sectional homes, and building service equipment.

[NY] BA102.7 Relocations

Relocated manufactured homes "SHALL have a manufacturer's label certifying compliance with applicable HUD Manufactured Home Construction and Safety Standards, and a data plate, affixed in the manufacturing facility..."



A statement "This manufactured home is designed to comply with the federal mobile home construction and safety standards in force at the time of manufacture."

Reference to structural zone and wind zone.

Data relative to the heating, insulation zone, and outdoor design temperature.



MHC Consultants LLC

Relocation - Exception

Mobile homes manufactured **BEFORE** June 15, 1976, need not comply with these provisions if they have been inspected by an agency or individual acceptable to the **building official** to determine that they are:

- Structurally sound
- Free of heating and electrical system hazards

Written documentation signed by the agency or individual performing the inspection shall be submitted to the **building official**

310

MHC Consultants LLC

[NY] BA103 Definitions

To partner with the definition in Article 21-b

- Manufactured Home Installation (and Setting). Construction that is required for the installation of a manufactured home, including the construction of the foundation system, required structural connections thereto and the installation of on-site water, gas, electrical and sewer systems and connections thereto that are necessary for the normal operation of the manufactured home.

311

MHC Consultants LLC

[NY] BA103 Definitions

To partner with the definition in Article 21-b

- Manufactured Home Installation (and Setting). Construction that is required for the installation of a manufactured home, including the construction of the foundation system, required structural connections thereto and the installation of on-site water, gas, electrical and sewer systems and connections thereto that are necessary for the normal operation of the manufactured home.

312

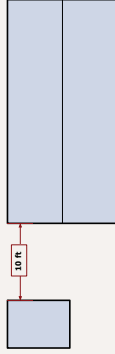
Article 21-b: Installation means "the affixation of a manufactured home to a foundation or supports at a building site; the assembly and fastening of structural components of ..."

I'm not installing it, I'm only moving, blocking and leveling ...



[NY] BAI12 Location on property

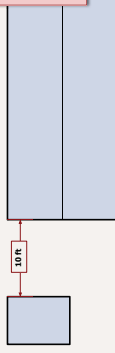
MH and accessory buildings shall be located in accordance with R302.1(1) or any other law or regulation regarding separation distances (local laws/zoning ordinances)



[NY] BAI12 Location on property

MH and accessory buildings shall be located in accordance with R302.1(1) or any other law or regulation regarding separation distances (local laws/zoning ordinances)

Such as perhaps requires 10' minimum spacing between homes and accessory buildings or structures



MHC Consultants LLC

BA112 Location on property

DOH Part 17.5

316

MHC Consultants LLC

[NY] BA113 New Manufactured Homes

New Home Installation

- Install according to manufacturer's installation instructions

SITE CONSTRUCTION

MHC CONSULTANTS LLC
3000 ROUTE 90
CHAMPAIGN, NY 14920
PH: 607.755.1100

317

MHC Consultants LLC

[NY] BA102.7 Relocated Manufactured Homes

RELOCATED Home Installation

- Install according to manufacturer's installation instructions
- If not available...

SITE CONSTRUCTION

MHC CONSULTANTS LLC
3000 ROUTE 90
CHAMPAIGN, NY 14920
PH: 607.755.1100

318



RELOCATED Home Installation

- HUD Model Installation Standard (24-CFR-3285)





RELOCATED Home Installation

- HUD Model Installation Standard (24-CFR-3285)
- NFPA 225 (2021) Manufactured Home Installation





[NY] BA13.2 Installation instructions



Installation instructions (or allowed alternative) shall be used to determine:

- Permissible points of support for vertical loads
- Points of attachment for anchorage systems
- Completion of all systems necessary for habitability
- Completion of any special or optional features.
