

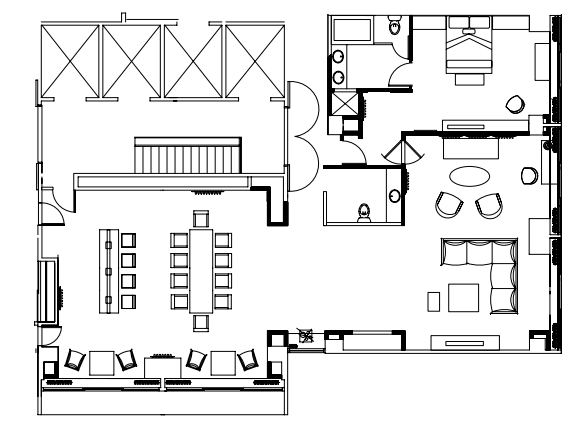
HYATT REGENCY ATLANTA  
265 Peachtree Street NE  
Atlanta, GA30303  
hyattregencyatlanta.com



HYATT  
REGENCY  
ATLANTA

**RESIDENTIAL SUITE**

- 1,800 square feet
- Large living room
- Dining/conference area
- Entertainment kitchen
- Island bar
- In room fitness system
- One or two bedrooms
- King or double



Experience our largest suite, with 1,800 square feet, towering city views, welcome foyer, king bed or two double beds, one or two bedrooms, spa bathroom, large living room, executive work desk, conference / dining room with table for ten and wall-mounted TV and an entertainment kitchen with an island bar work desk.

*This is a premium suite. See World of Hyatt program terms for upgrade eligibility.*

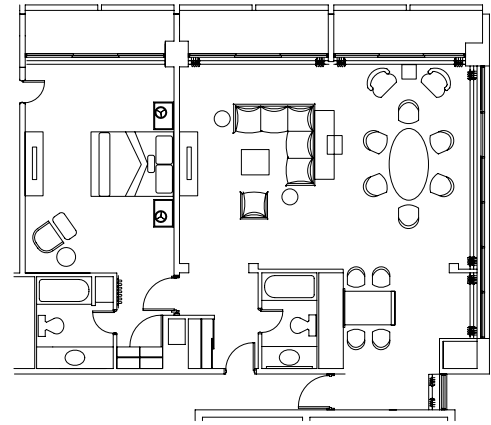


GUESTROOMS  
& SUITES



## AMBASSADOR SUITE

- 1,200 square feet
- Large living area
- Sitting area
- Dining area
- Wet bar
- 3 Fresh air balconies
- City views
- King or double

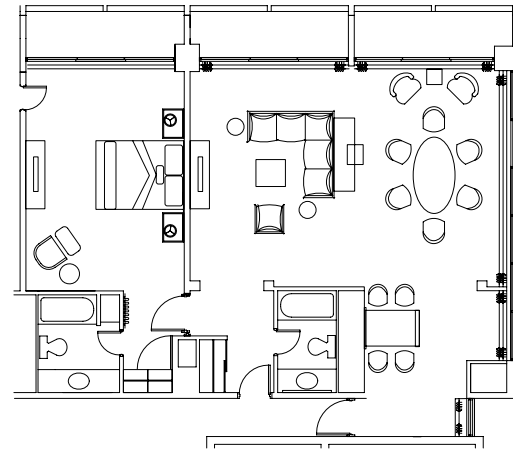


Have your own Atlanta home base with a 1,200-square foot Ambassador Suite. This residential Suite is our second largest and features three outdoor balconies with city views, a large living area with sleeper sofa, sitting area, dining area with table for eight and full wet bar. Choose one king bed or two queen beds.

*This is a premium suite. See World of Hyatt program terms for upgrade eligibility.*

## DELUXE SUITE

- 3 Fresh air balconies
- City view
- 850 square feet
- King or two queen beds
- Living room
- Dining room
- Wet bar

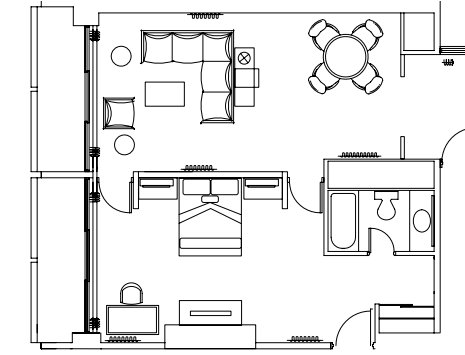


Take in spectacular views of the Atlanta skyline on three outdoor balconies in our 850-square foot Deluxe Suite. The suite features one king bed or two queen beds, spa bathroom, separate living area with large sleeper sofa, dining area with table for eight and a full wet bar.

*This is a premium suite. See World of Hyatt program terms for upgrade eligibility.*

## EXECUTIVE BALCONY SUITE

- 450 square feet
- Outdoor balcony
- One king bed
- Private bedroom
- Parlor
- Four person table

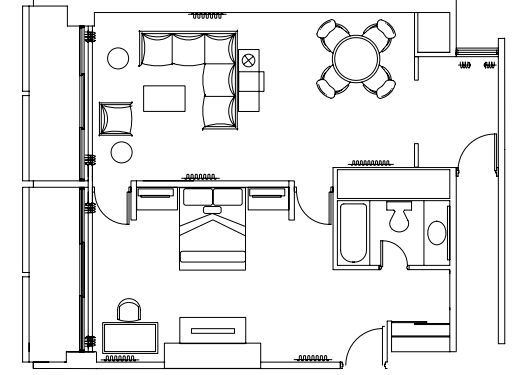


Enjoy more space and fresh air with our 450-square foot Executive Balcony Suite. The Suite features one king bed in a private bedroom, an outdoor balcony, a comfortable parlor with a sectional sleeper sofa and a four-person table for dining or remote working.

*This is a standard suite. See World of Hyatt program terms for upgrade eligibility.*

## PORTMAN BALCONY SUITE

- 450 square feet
- Outdoor balcony
- King bed
- Parlor
- Four person table
- Inspired by the design of John Portman



Find an authentic Atlanta experience in a balcony suite inspired by John Portman, the acclaimed architect who designed our iconic hotel. Portman Suites are 450 square feet and feature one king bed in a private room, outdoor balcony, wood floors, residential parlor and four-person table for dining or remote working.

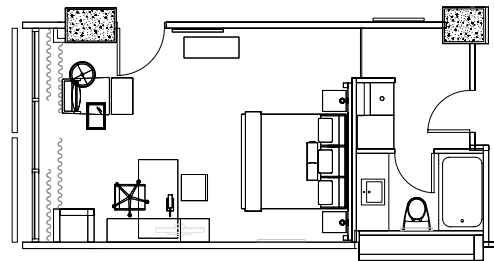
*This is a premium suite. See World of Hyatt program terms for upgrade eligibility.*



## ▶ ATRIUM TOWER GUESTROOMS 1 King / 2 Queen

Enjoy city views and fresh air on your own walk-out balcony in this 380-square-foot room with one king or two queen beds architectural design, plush carpeting, handy open wardrobes, and a remote workstation.

- Hyatt Grand Bed
- 65" flat screen TV with content streaming services
- Individually-controlled heat and air conditioning
- Pharmacopia Natural Organic Bodycare products
- Cafe Valet Barista One-Cup Coffee Maker
- Built in USB ports and device charging stations
- RFID lock system
- In-room safe

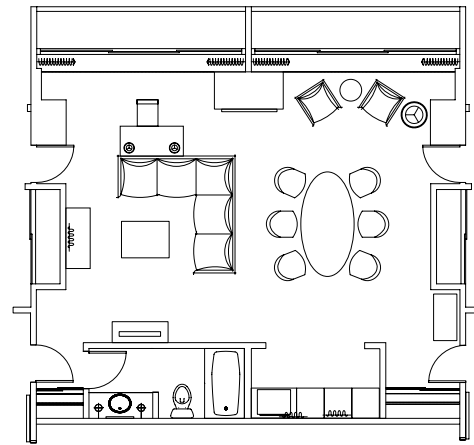


## ▶ PREMIUM SUITE

Live like a local in our 750-square foot residential Premium Suite. Each suite features a large living room and sleeper sofa, dining area with seating for eight, plus a full wet bar and wine cooler. Choose one king bed or two double beds.

*This is a premium suite. See World of Hyatt program terms for upgrade eligibility.*

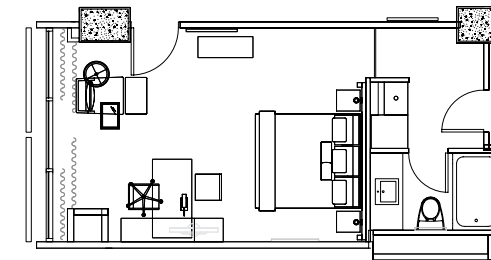
- 750 square feet
- King or two queen beds
- Living room
- Dining room
- Wet bar
- Wine cooler



## ▶ CORNER DELUXE ROOM

Stretch out in this corner room's 485 square feet of comfortable space – our largest guestroom – offering one king bed and a residential layout including full-length mirror, large bathroom and separate work area.

- Hyatt Grand Bed
- 65" flat screen TV with content streaming services
- Individually-controlled heat and air conditioning
- Pharmacopia Natural Organic Bodycare products
- Cafe Valet Barista One-Cup Coffee Maker
- Built in USB ports and device charging stations
- RFID lock system
- In-room safe



## ▶ INTERNATIONAL TOWER GUESTROOMS

Rest comfortably in 418 square feet, 10% larger than standard rooms – with one king or two double beds and a residential layout including full-length mirror and work area, all in a separate, private tower with its own entrance.

- Hyatt Grand Bed
- 65" flat screen TV with content streaming services
- Individually-controlled heat and air conditioning
- Pharmacopia Natural Organic Bodycare products
- Cafe Valet Barista One-Cup Coffee Maker
- Built in USB ports and device charging stations
- RFID lock system
- In-room safe

