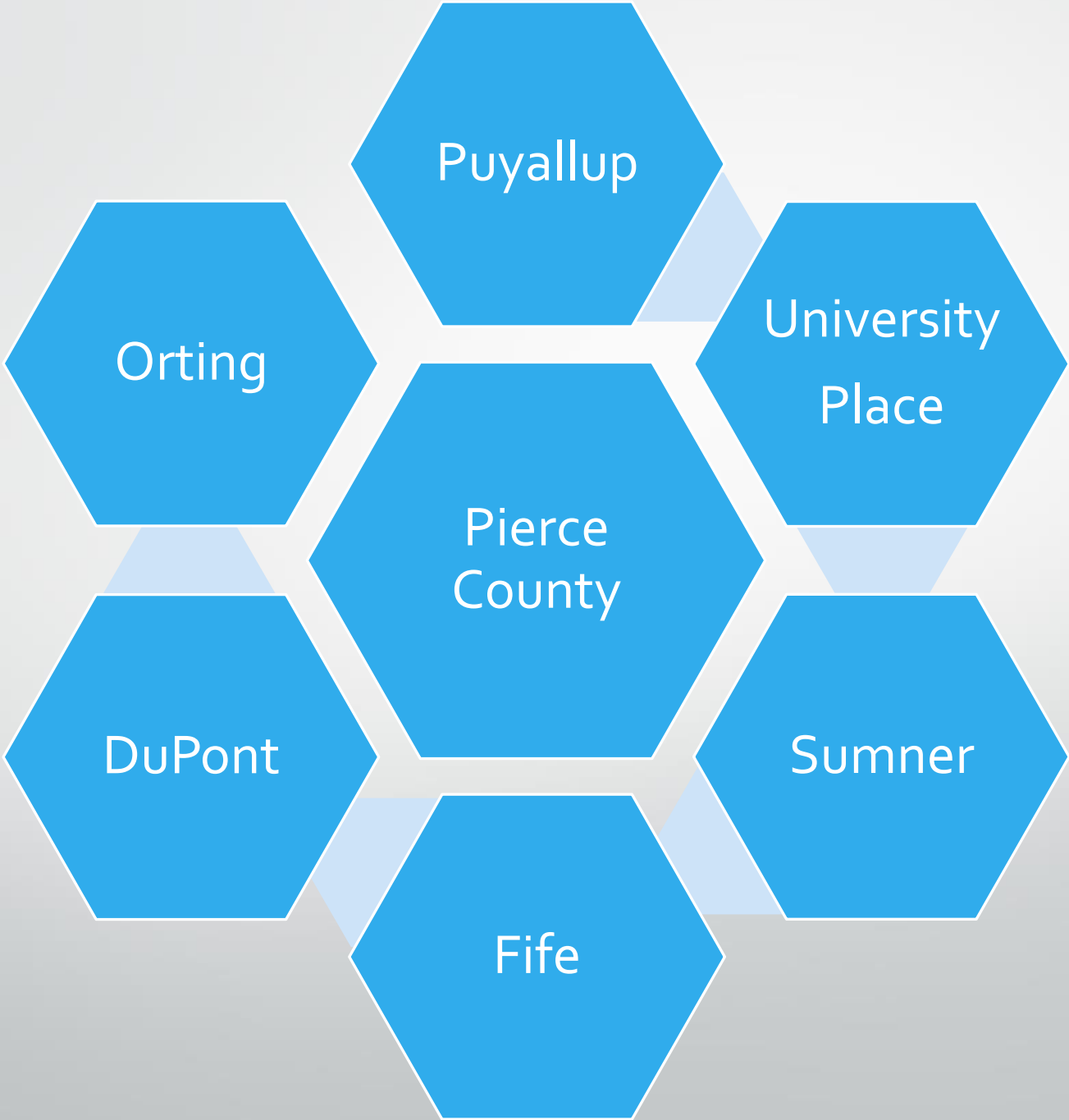




Live + Remote Equipment Trends

PCTV General Manager Megan Hutton



Puyallup

Orting

University
Place

Pierce
County

DuPont

Sumner

Fife



Quick Sneak Peak New Camcorder

Brand new release – Sony PXW-Z200

- PCTV looking to upgrade 6-year old Sony 705
- 4k
- 1" sensor
- 20x zoom
- Built-in variable ND filter
- AI subject recognition
- Cold shoe kit

PXW-Z200 4K 1" CMOS Sensor XDCAM Camcorder

PXW-Z200 • MFR #PXW-Z200 | 12 Questions, 12 Answers | [Share](#) | [Print](#)



New Release

[New Item - Coming Soon](#) | [Req](#)

\$3,999.99

1

Pre

[Free 2-Day Shipping](#)

[Protect Your Gear](#)
Add a protection plan from \$179.99



Mobile Carts

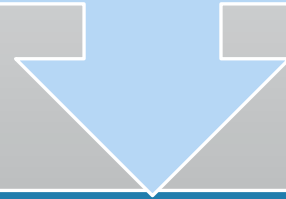
Benefits of Mobile Studios (Carts)

A studio setup, stored in a container, that moves on wheels.

- **PORTABILITY**
 - Cover field productions in any location
 - Tall buildings, elevators, doorways, vehicles
- **EFFICIENCY**
 - Speed up setup and tear down
- **PROTECTION**
 - Limit wear and tear on gear
- **VERSATILITY**
 - Up front cost, long term use, swap out gear

Upgrading the old mobile studio

Too many separate items...suitcase, tubs, monitors, table, etc.
Setup took too long...issues with early morning events
Concerns about lifting equipment



Larger cart(s) to hold everything
Customized extra storage
Safe to maneuver

Researching
vendors
+
mobile carts

Mobile Studios

BigFoot

Heavy duty
Light weight
Narrow design
Custom built

Flypack Hardware Research + Design

- Staff meetings (6 mo planning + NAB) to determine wants and needs
- Improve ergonomics for 2-4+ hour events
- Replace separate containers with built-in storage
- Increase from one to two carts
- Continue to use Tricaster and Atomos Samaurai
- Higher quality monitors for preview and program
- Use Dante stagebox for audio, not analog XLR snake
- Ability to swap out equipment
- Ready to see a picture?



Flypack Hardware + Cost

- 18 versions of the quote
- Vizrt (NewTek) TriCaster TC1 Pro - \$21,845
- Vizrt TC1 small panel (now: Flex Control Panel)
- Cart 1 main production- \$11,088
- Cart 2 storage only - \$7,750
- Flypack hardware - \$75,775
- Key Code Media professional services - \$16,310
- Tax - \$11,425
- Total cost - \$122,348









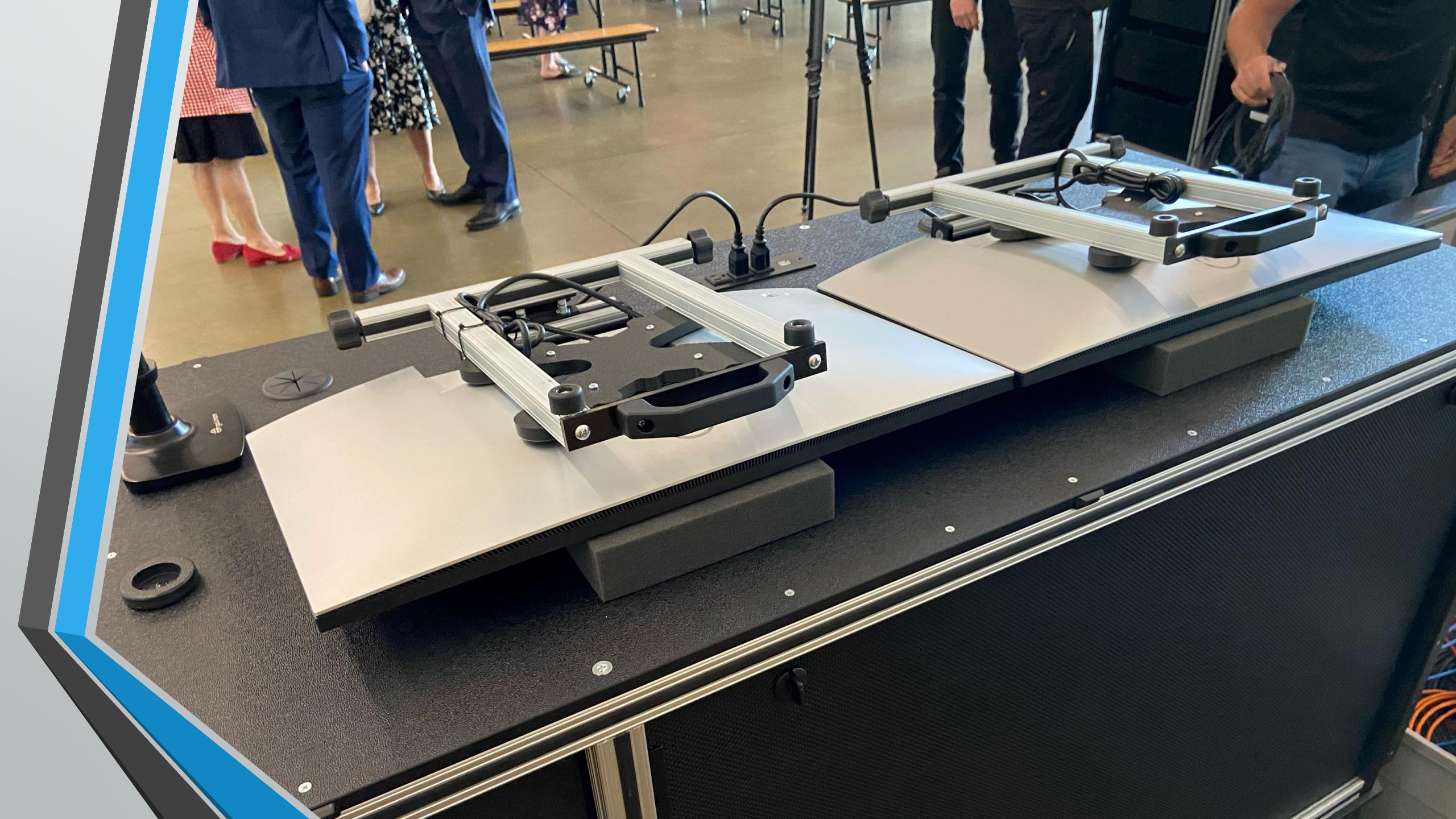


LIVEU LU300 FIELD UNIT #1

TRUCK ROLL
MICROPHONES

SONA CONNECT SERIES









Upgrading
Council Chamber
Equipment

Upgrading Six Different City Council Chambers with the same gear

- Move away from Broadcast Pix
- Switch to Tricaster
- 6-year replacement cycle
- Cost per city = \$39,734
- Total for 6 cities = \$249,182
- Wait to replace robotic cameras in 2026-27 budget

2024 City Council Hardware

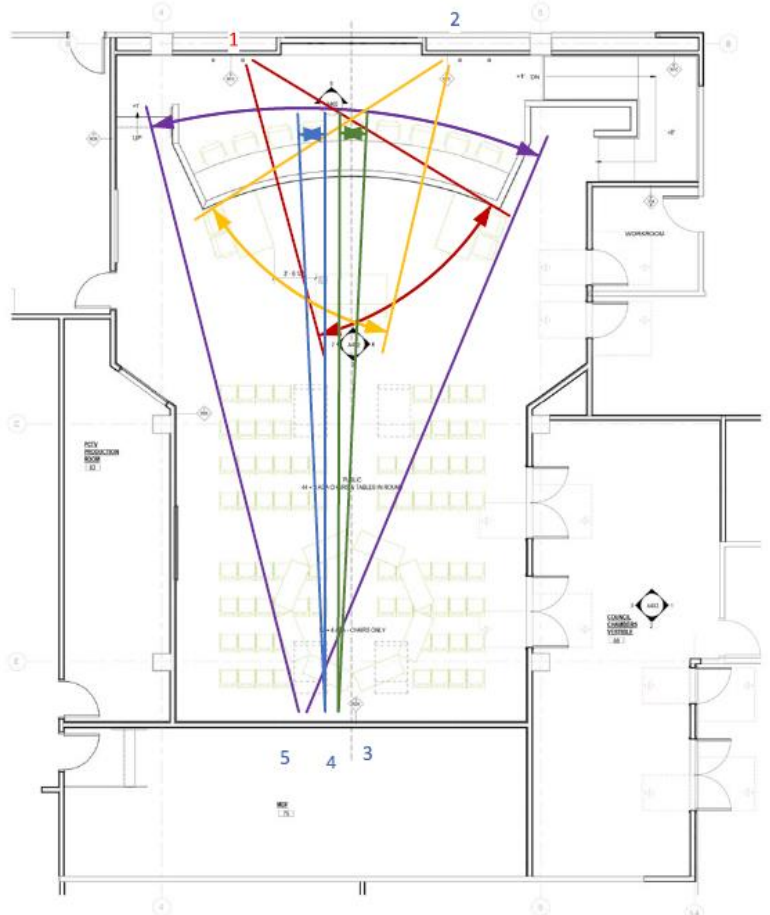
- Vizrt Tricaster TC1 Pro
- Vizrt Flex Control Panel
- Dell UltraSharp monitors 27", 28.3", 21.5"
- Live streaming – LiveU LU610
- Streamdeck XL for controlling macros
- HP laptop
- Network switch – Netgear AV Line M4250 24-port Gigabit PoE++
- UPS Vertiv Liebert UPS 1500



Planning for a Brand New Council Chambers

2025 Pierce County Council

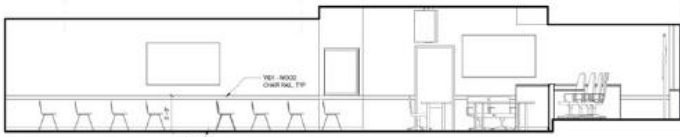
- Ask for a seat at the planning table
- Meet regularly with the project manager
- Offer vendor recommendations
- Provide expert advice on camera placement, sound, lighting, monitor placement, control room, etc.
- Make a concession to show you're a team player
- Ask for a timeline...when will wiring be decided, when should equipment be ordered?



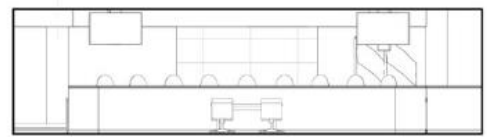
1 LEVEL 1- COUNCIL CHAMBERS ENLARGED PLAN
SCALE: 1/4" = 1'-0"



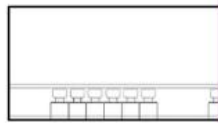
6 COUNCIL CHAMBERS - EAST ELEVATION
SCALE: 1/4" = 1'-0"



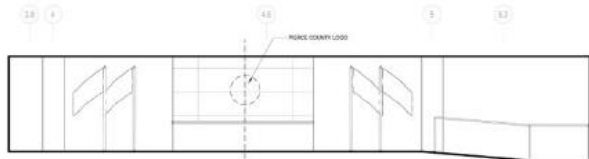
7 COUNCIL CHAMBERS - WEST ELEVATION
SCALE: 1/4" = 1'-0"



4 COUNCIL CHAMBERS - NORTH ELEVATION
SCALE: 1/4" = 1'-0"



3 COUNCIL CHAMBERS - SOUTH ELEVATION
SCALE: 1/4" = 1'-0"



9 COUNCIL CHAMBERS - NORTH ELEVATION 1
SCALE: 1/4" = 1'-0"

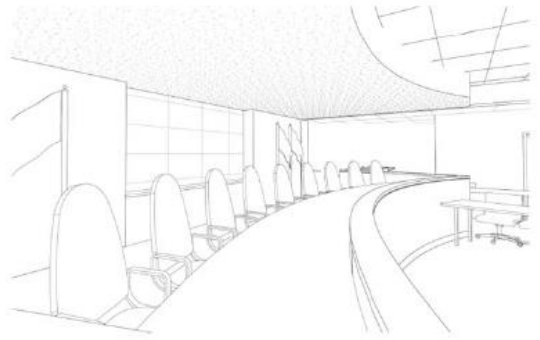
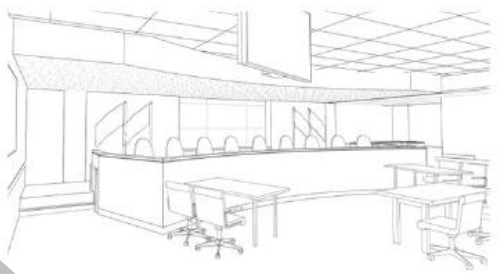
Red - Cam 1 – Podium/ Staff 1

Orange - Cam 2 – Podium/Staff 2

Green - Cam 3 – Council Chair

Blue - Cam 4 – Second Council Cam

Purple Cam 5 - Wide shot of Dias



1501 MARKET - TENANT IMPROVEMENT
PIERCE COUNTY
1501 MARKET ST, TACOMA, WA 98402

ORIGINAL SHEET NO. - 344 42
P&P SEE WORKBOOKS - 15121

07/06/2024
DESIGN DEVELOPMENT
A402
INTERIOR ELEVATIONS

2025 Pierce County Council Hardware

- Will be quoted in Jan-Feb 2025
- Vizrt Tricaster TC2 Elite
- Vizrt Flex Control Panel
- Dell UltraSharp 27" monitors
- Live streaming – LiveU LU610
- Streamdeck XL for controlling macros
- HP laptop
- Network switch – Netgear AV Line M4250 24-port Gigabit PoE++
- UPS Vertiv Liebert UPS 1500



6 U



6 U



8 U



8 U



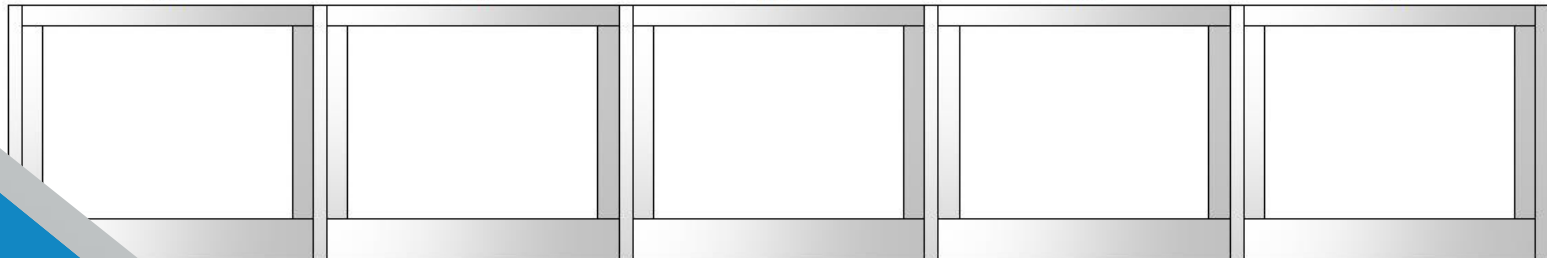
8 U



8 U



8 U



1 U

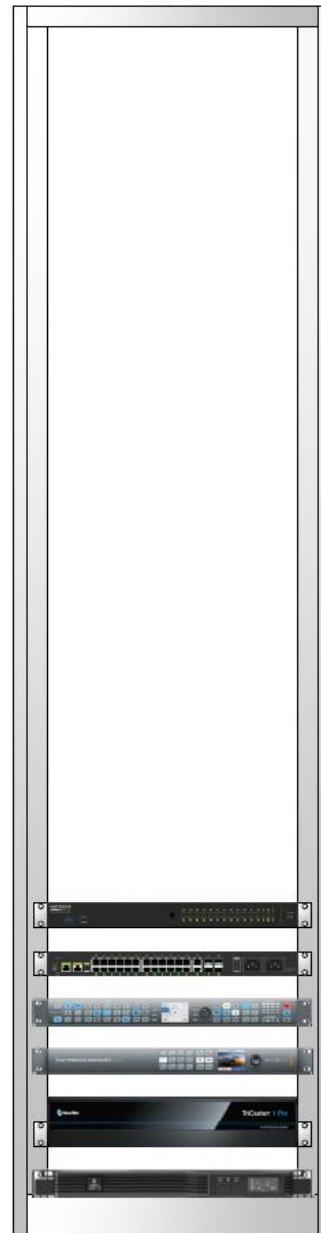
1 U

1 U

1 U

2 U

1 U



48 U

Netgear M4250 Front

Netgear M4250 back

BMD Terenex

BMD VH 12x12

Tricaster TC1 Pro

Vertiv PS 1500



piercecountytv.org
YouTube @piercecountytv

Megan Hutton, PCTV General Manager
megan.hutton@piercecountywa.gov
(253) 341-5184 cell