

Remade to Stay

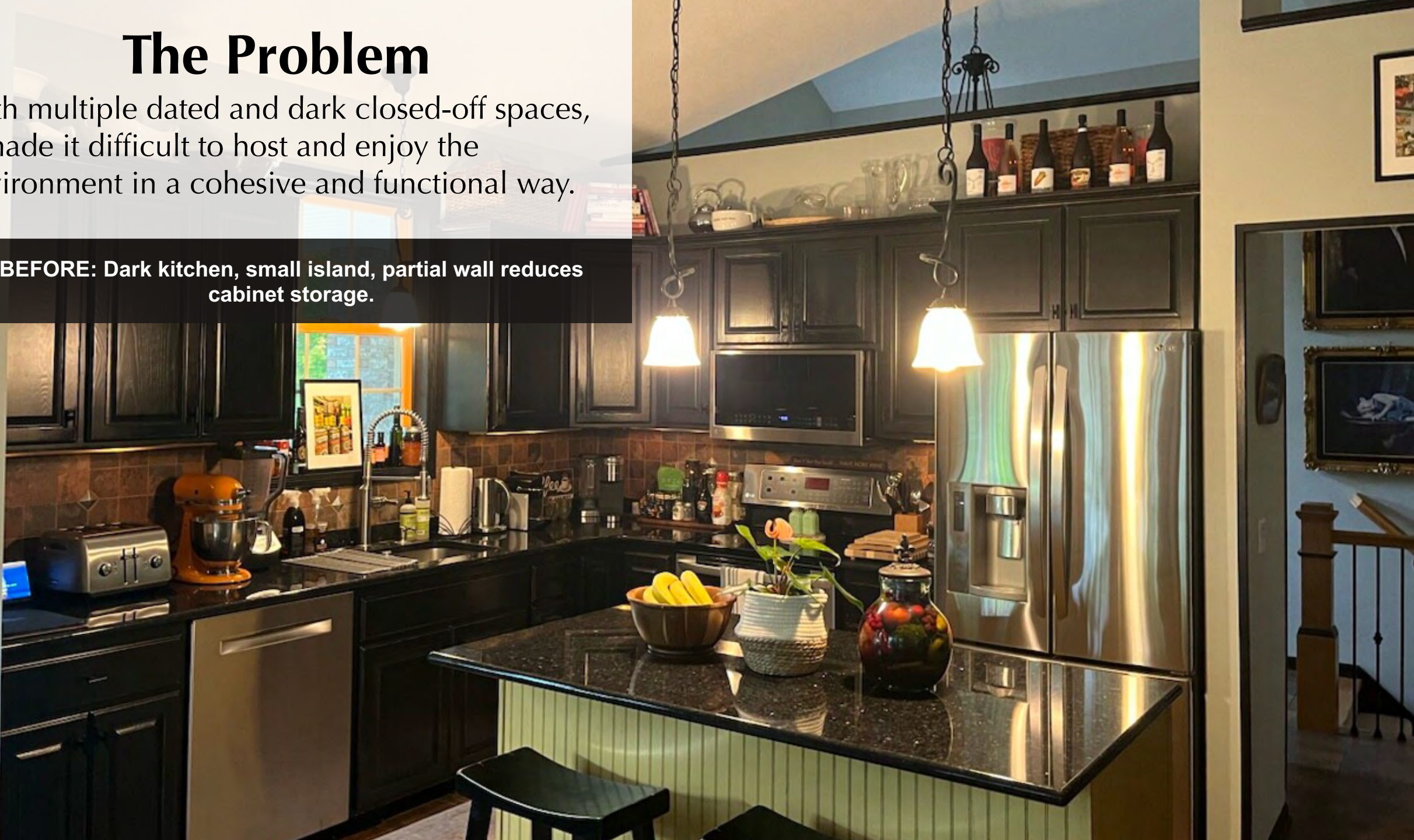
Entire House \$750,000 to \$1,000,000



The Problem

With multiple dated and dark closed-off spaces, it made it difficult to host and enjoy the environment in a cohesive and functional way.

BEFORE: Dark kitchen, small island, partial wall reduces cabinet storage.



Scope of Work

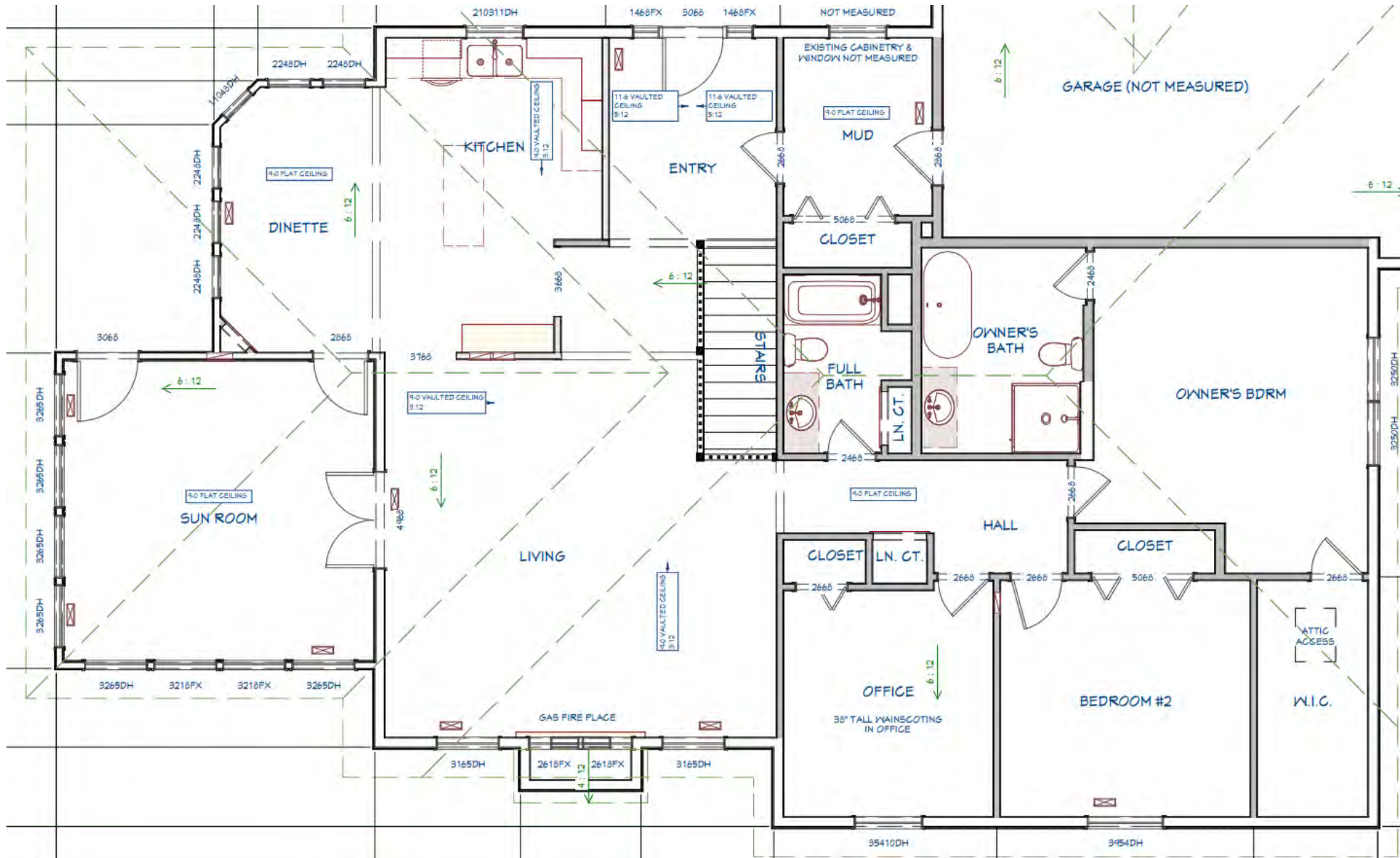
- Painted front door
- Entryway staircase
- Kitchen cabinets & Island
- Dining/sunroom/Bev. center
- Living room Fireplace & TV wall
- Mudroom
- Lower Level
 - Entertainment wall
 - Wet bar
 - Home gym
 - Simulator Addition



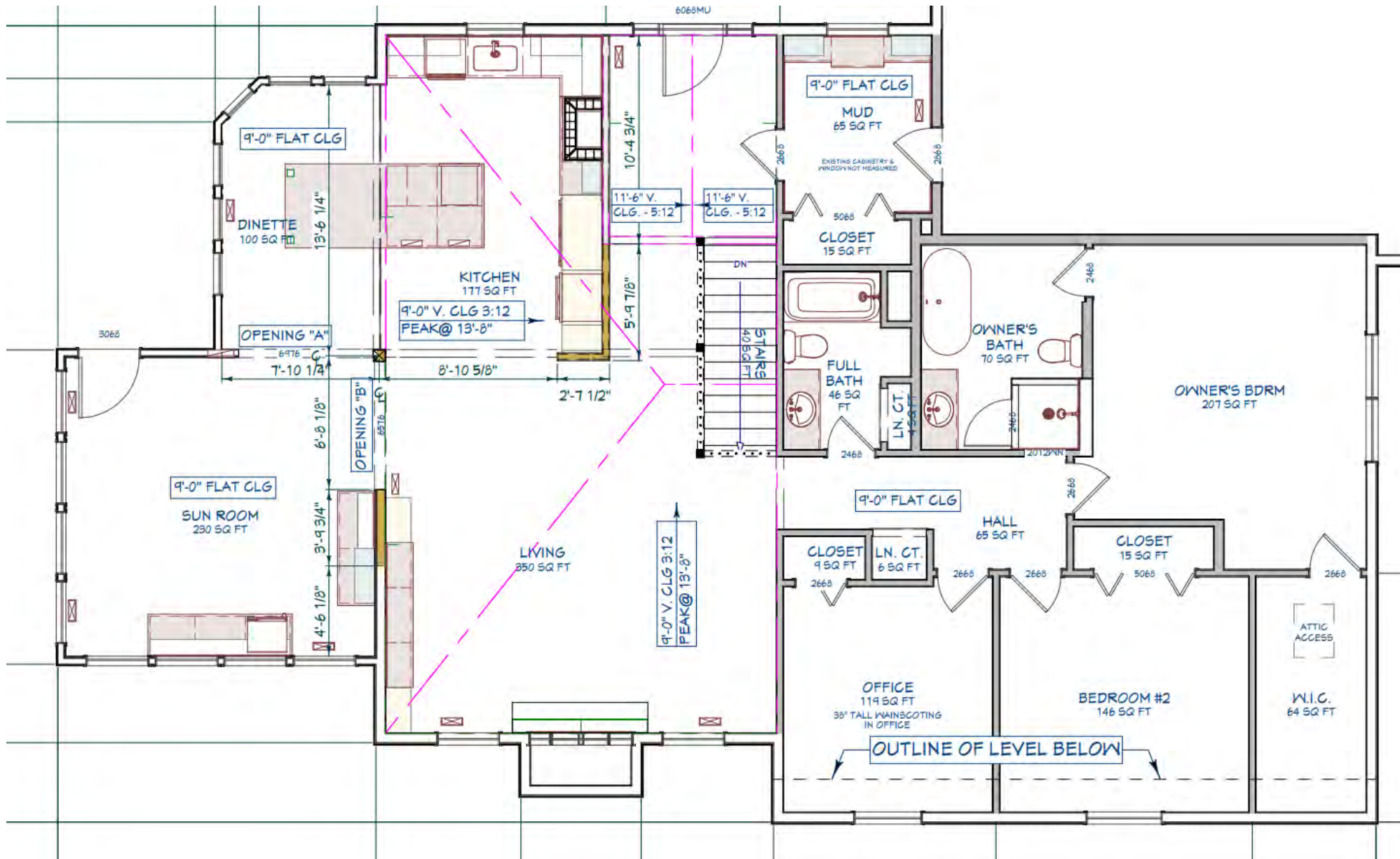
BEFORE: Sunroom doors block kitchen and entryway/living room

Existing Plan

Main Level



Main Level



4 Client Goals

1. Creating a spacious, open-concept main living area that combines functionality, storage and flow.
2. Incorporate a modern organic style with rich textures and natural colors to create an inviting and calming space.
3. Integrate distinct spaces in the lower-level to improve functionality and flow, adding dedicated three entertainment zones and a lower-level bath.
4. Establish a consistent, cohesive design and feel throughout the home.

BEFORE: Entryway & kitchen wall





1st Client Goal

Creating a spacious, open-concept main living area that combines functionality of a buffet/beverage center and coffee bar with new storage.

BEFORE: Sunroom



1st Challenge

Faced with overcoming a dark and choppy layout, our design had to solve opening some spaces, extending/reducing walls in others, while minimizing the prominence of the structural post between sunroom, kitchen and dining room.

BEFORE: Living room off sunroom



1st Goal Achieved

Creating a spacious, open-concept main living area that combines functionality of a buffet/beverage center and coffee bar with new storage.

AFTER: Sunroom



1st Goal Achieved

To achieve the open concept in the main living area, a required structural post was wrapped in drywall to blend seamlessly into the space, subtly directing the eye toward the dark cabinetry accented with stained rift-sawn white oak.



AFTER: Unobstructed view of kitchen from sunroom



2nd Client Goal

Incorporate a modern organic style with rich textures and natural colors to create an inviting and calming space.

BEFORE: Kitchen island, dining table



2nd Challenge

Open up the kitchen, improve functionality & storage, and create enough island seating for 5 people – all while integrating two different ceiling heights and a wall of windows.

BEFORE

2nd Goal Achieved

Lighter kitchen tone, improved functionality & storage, enough island seating for 5 people, matching existing window trip with island tone for thematic consistency.

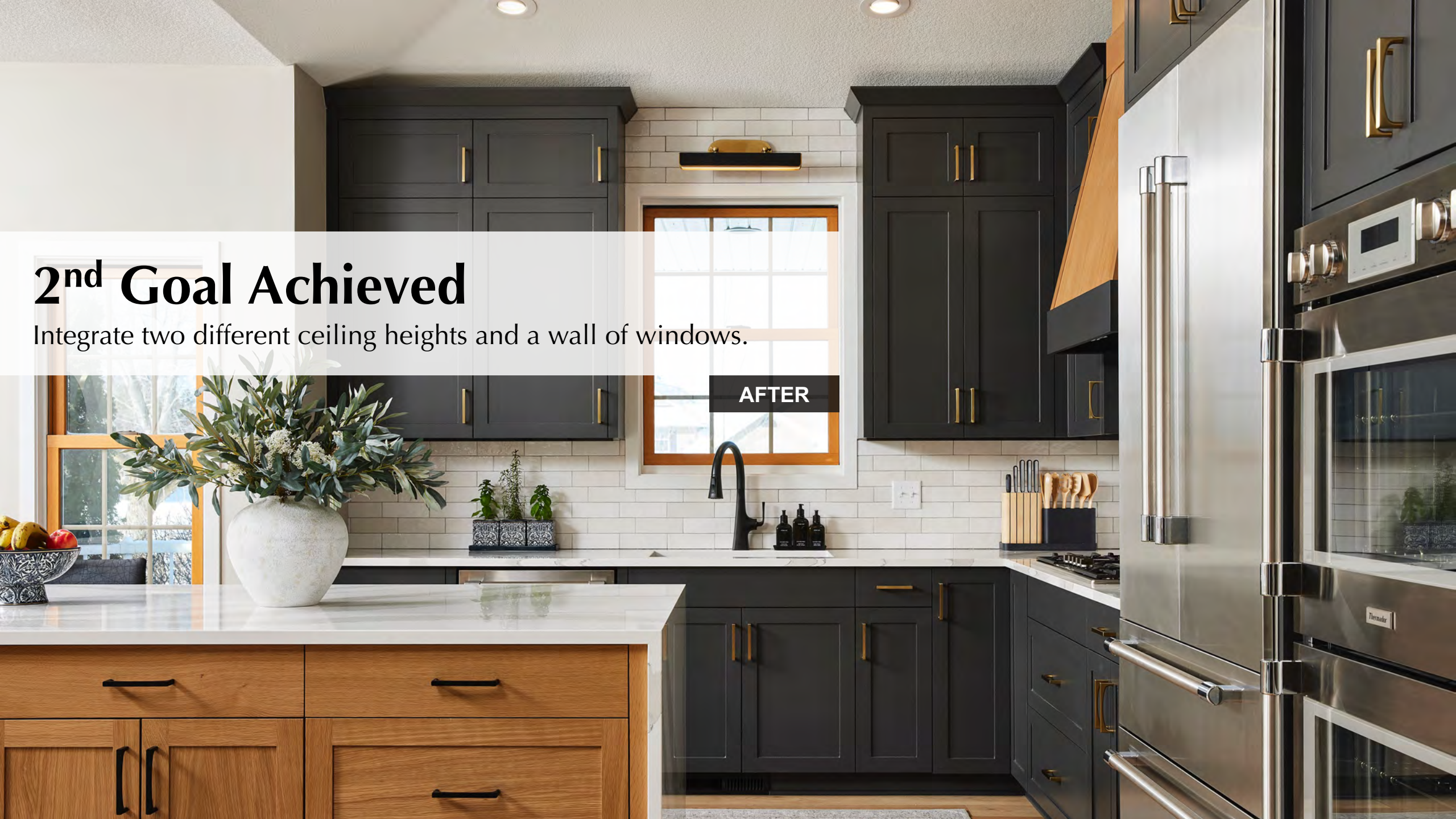
AFTER



2nd Goal Achieved

Integrate two different ceiling heights and a wall of windows.

AFTER






2nd Goal Achieved

Floor to ceiling cabinets dramatically expands storage; Cambria countertops elevates organic aesthetic, adds contrast to darker toned cabinets, lighter tone flooring keeps it bright.

AFTER

A close-up view of a fireplace with a dark grey surround and a white marble surround. Above the fireplace is a window with two panes and a wooden frame. To the right of the fireplace is a dark grey vase with a plant. To the left of the fireplace is a small table with a vase of flowers.

Cambria fireplace surround

A view of a living room featuring a large wall of vertical wooden slats. A television is mounted on the wall, displaying a lighthouse. Below the wall is a dark grey built-in cabinet with a white countertop. To the right of the cabinet is a tall dark grey shelving unit with various decorative items. In the foreground, there is a red armchair with a patterned pillow and a beige sofa with a patterned pillow.

Living Room Built-ins with Slat Wall

2nd Goal Achieved

Incorporate a modern organic style with rich textures and natural colors to create an inviting and calming space.

AFTER: Living room



BEFORE: Lower level

3rd Client Goal

Integrate distinct spaces in the basement to improve functionality and flow, adding dedicated three entertainment zones and an updated bath.



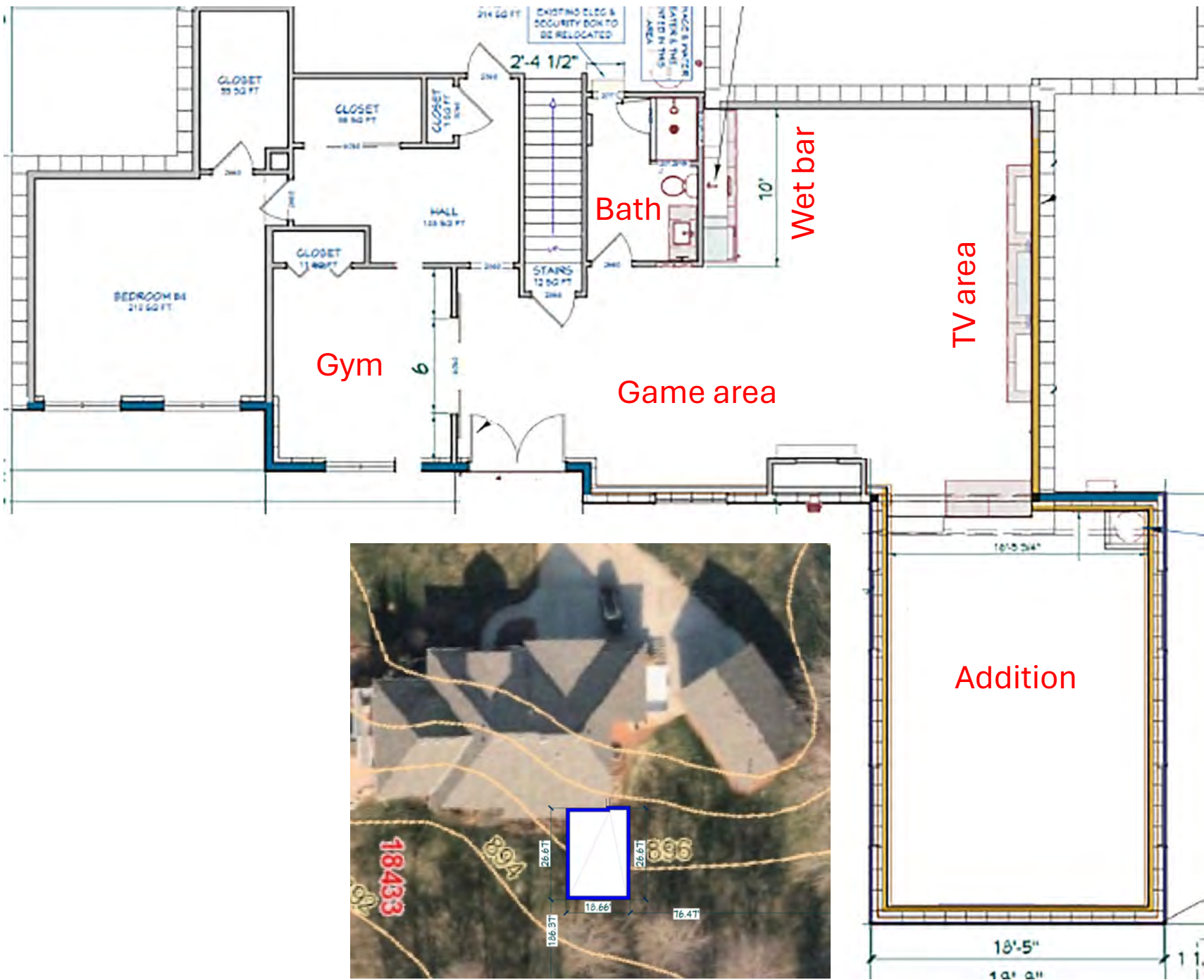
3rd Challenge

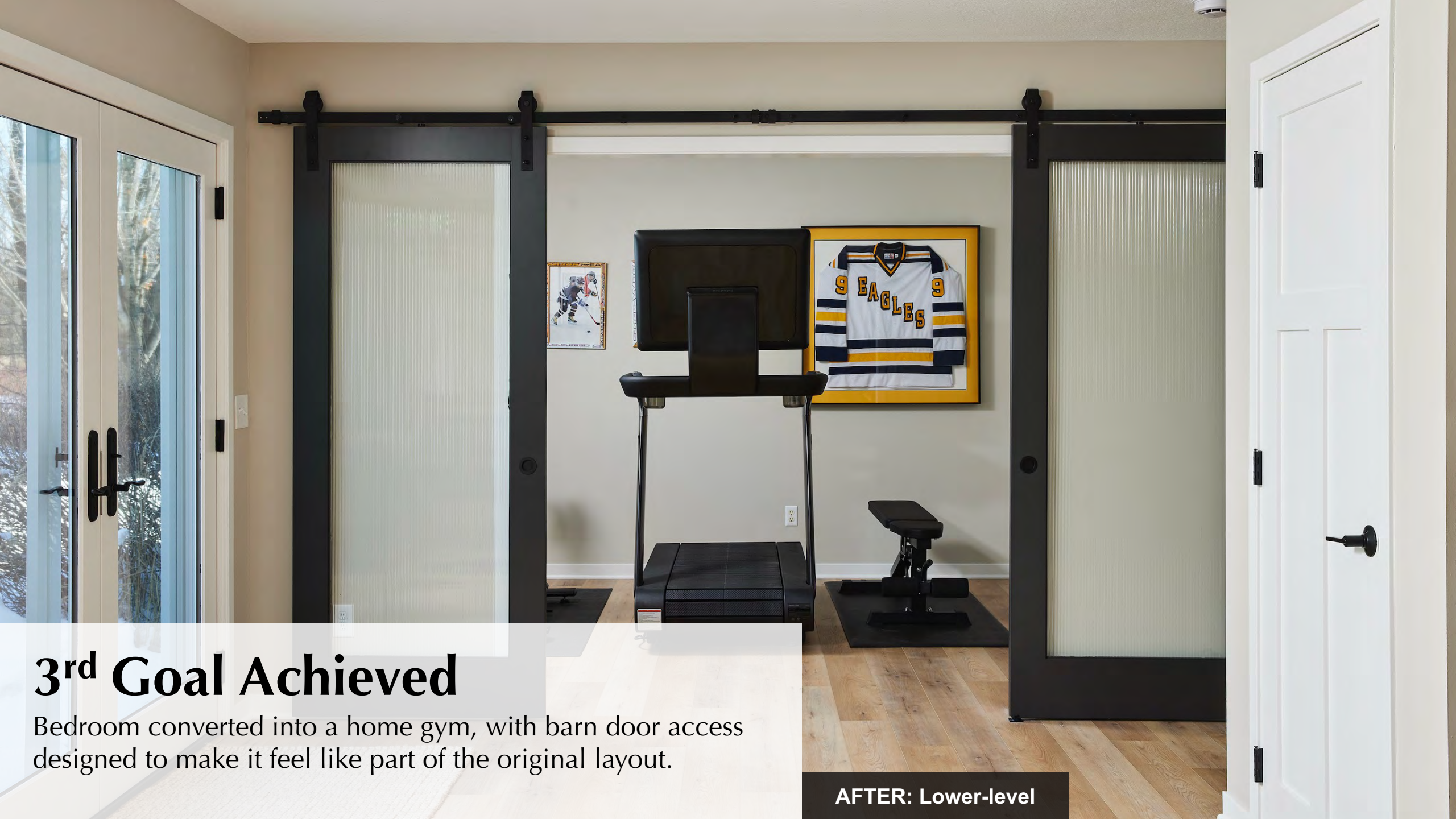
Create a space for a gym, a communal multi-functional entertainment gathering space, and dedicated space for a TrackMan golf simulator room.

BEFORE: Lower-level gym equipment looking toward bedroom.

Proposed Plan

Lower Level





3rd Goal Achieved

Bedroom converted into a home gym, with barn door access designed to make it feel like part of the original layout.

AFTER: Lower-level

3rd Goal Achieved

Integrate distinct spaces in the basement, dedicated three entertainment zones, including one tailored for hosting movie nights with family and friends. Floating shelves & cabinets echo main floor wood tones

AFTER: Lower-level TV slat wall



3rd Goal Achieved

Integrate distinct spaces in the basement, dedicated three entertainment zones, including one tailored for hosting movie nights with family and friends and a game table.

AFTER: Lower-level entertainment zones



3rd Goal Achieved

Integrate distinct spaces in the basement, dedicated three entertainment zones, including an addition for a golf simulator, fireplace, large screen TV wall and a game table.





3rd Goal Achieved

Integrate distinct spaces in the basement, dedicated three entertainment zones, including one designated TrackMan golf simulator.

AFTER: Lower-level 16 x 25 golf simulator addition

3rd Goal Achieved

Integrate distinct spaces in the basement, dedicated three entertainment zones, including one tailored for bar hosting with beverage center.

AFTER: Lower-level wet bar



3rd Goal Achieved

Update lower-level bath to be consistent aesthetically with all the other design changes to the home.



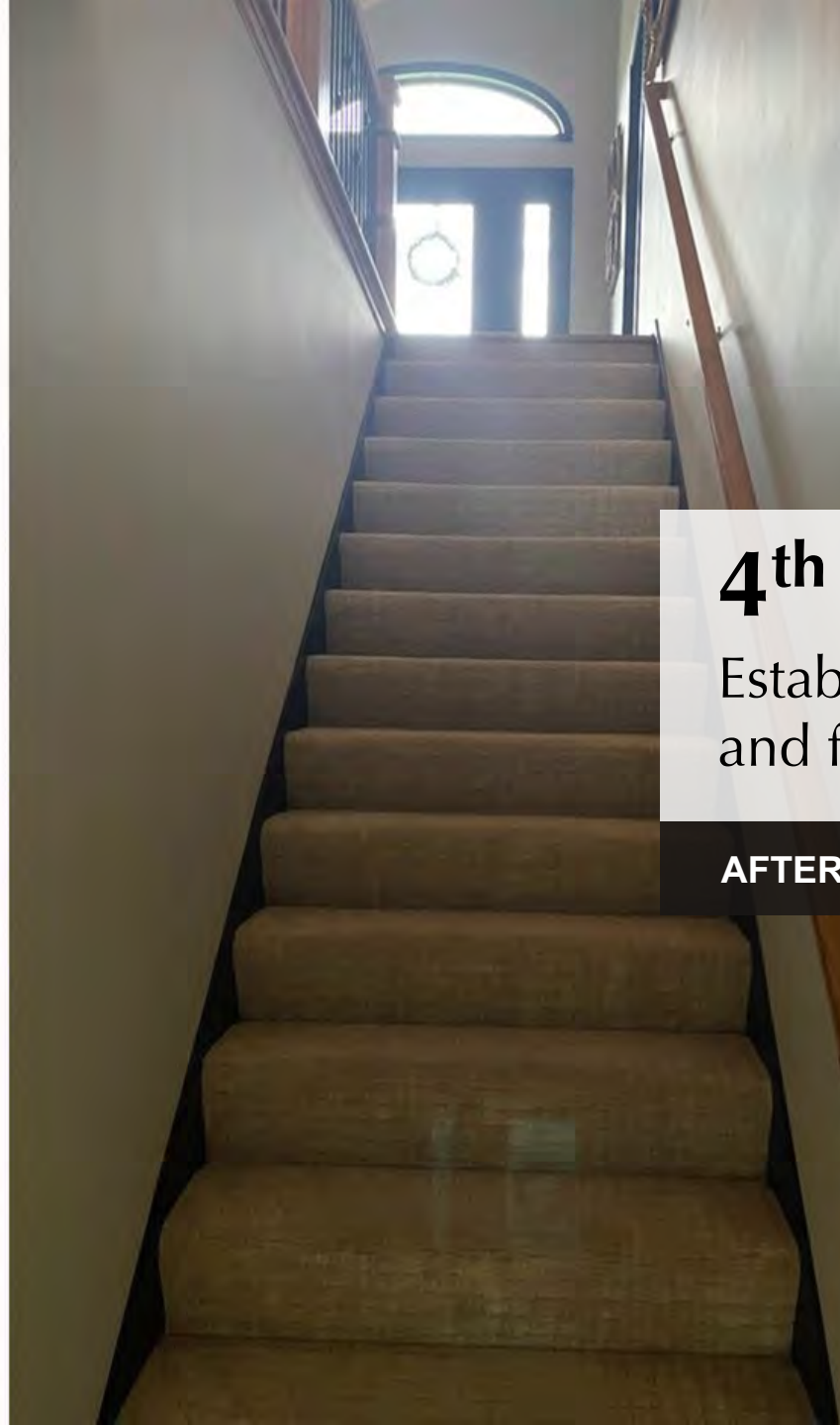
AFTER: Lower-level bath

4th Client Goal

Establish a consistent, cohesive design and feel throughout the home.

BEFORE: Lower-level bath and bedroom doorways

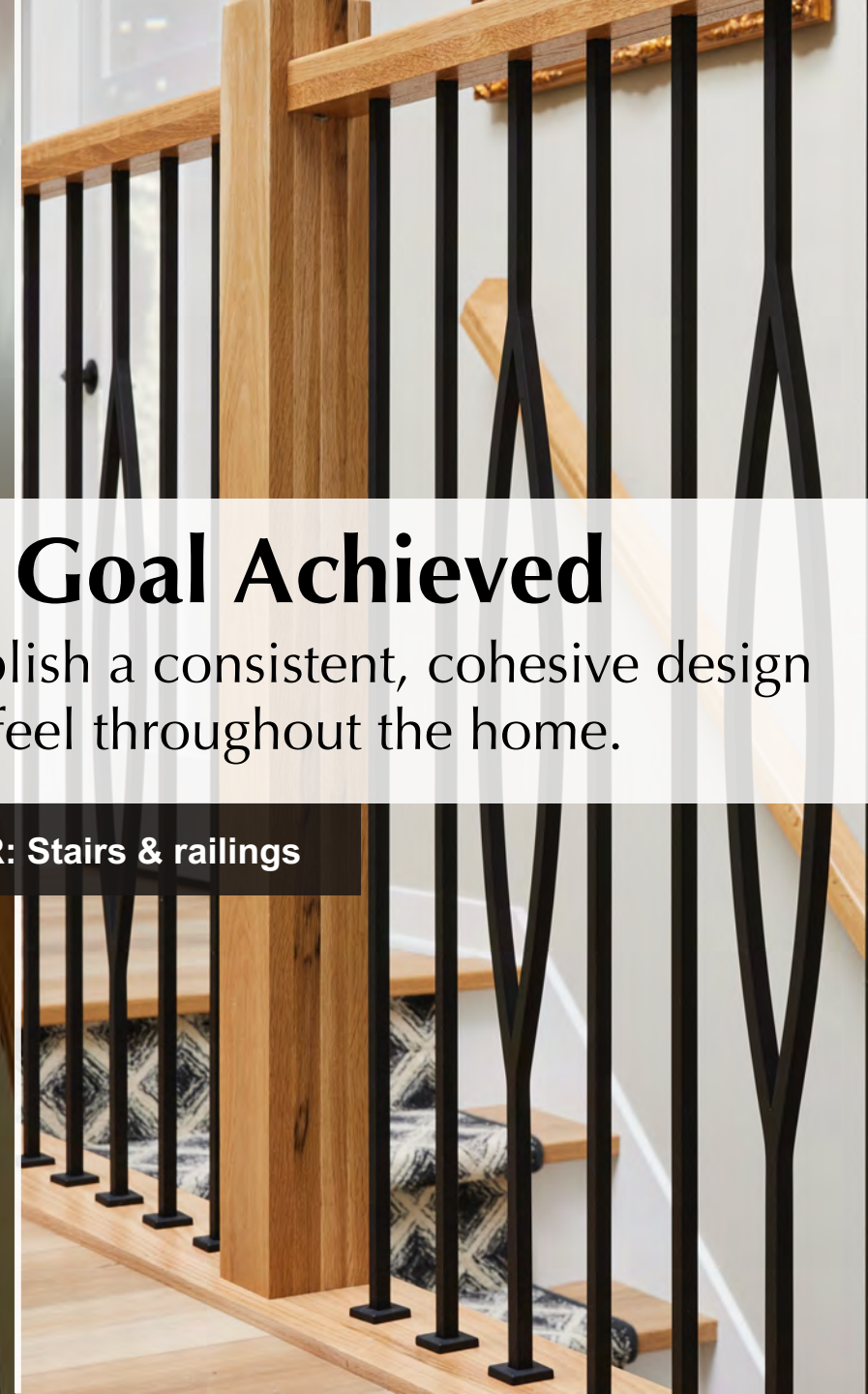




4th Goal Achieved

Establish a consistent, cohesive design and feel throughout the home.

AFTER: Stairs & railings





4th Goal Achieved

Establish a consistent, cohesive design and feel throughout the home.



AFTER: Entryway & railings



4th Goal Achieved

Painting the existing cabinets and wainscoting refreshed the mudroom with a modern touch, while new doors, fixtures, and wallpaper reflects a consistent, cohesive design and feel throughout the home.



AFTER: Mudroom