



The Wren Meadows
Master Bath



KEY FEATURES:

- Spacious walk-in shower
- Luxurious free standing tub
- Custom Walnut vanity and mirror
- Cascading pendant lights
- Open plan to create expansive feel
- Textural ceramic wall tile
- Track mounted walnut bathroom door



Client's Dream

"The wall surrounding the shower made everything feel cramped! The space had so much potential, but it needed some work."

The old bathroom had a cramped shower with worn and loose tiles. A sagging vanity showed its age while dim lighting lacked the luminance needed. Poorly functioning fixtures added inconvenience, making daily use another concern. A failing shower, and persistent mold, drove the need for an update. This inspired a modern retreat with improved space, light, and comfort with a fresh contemporary feel.



Challenge Accepted

"We're missing a door and the bathroom feels so compartmentalized! The lighting is lacking and the whole thing feels so bland and unwelcoming. We want warmth and light, and for it to be cohesive with the rest of our home and the love we have for it! "

- Homeowners



A Cramped, Failing Shower

The shower was encased by a wall, effectively eliminating any liberating feeling that comes with washing off the dirt and grime. Instead, it was more like a cold, wet cave, with someones high-beams pointing directly at you from the ceiling. No windows, no airflow, eroding grout, and a shower that poured out more neglect than warm water. More than anything, this needed to be opened up. No walls, no suffocation, new tile, and of course, a shower that loved to be a shower.

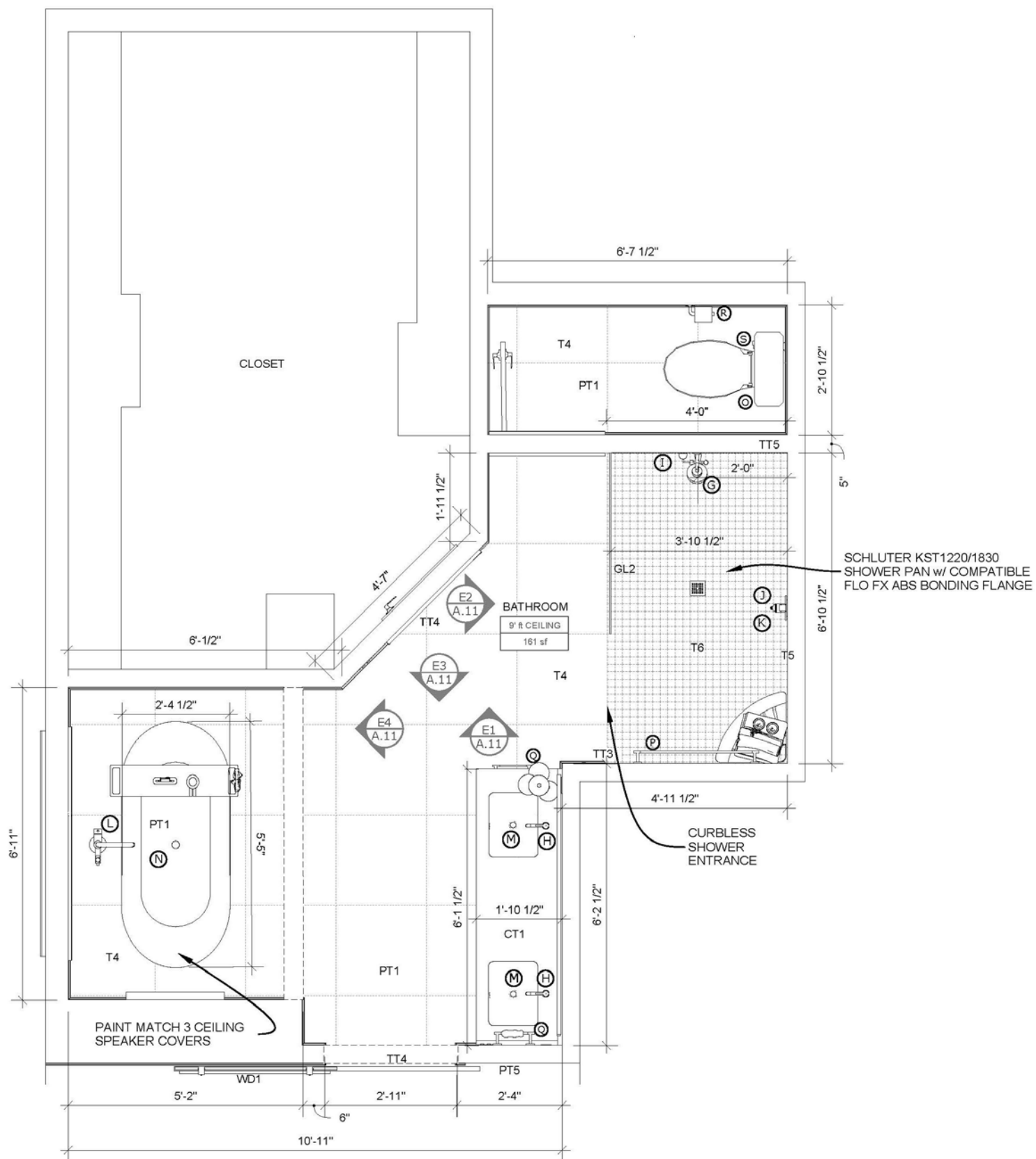




The Dream Sleep Saver

Early mornings for one homeowner brought upon rude awakenings for the other. Without a door dividing the bathroom from the bedroom, there was no choice but to suffer through lights being turned on and the sounds of bathroom activities. Interrupted sleep cycles set the sweet slumberer up for a less than an optimal day. This was a top priority, and while technically a small change, the homeowners knew that not having a door was one of their biggest pain points. A beautiful track mounted walnut slab door addressed their issues without taking up valuable space in the bathroom or requiring a significant expense in modifying the load bearing structural wall it was attached to.

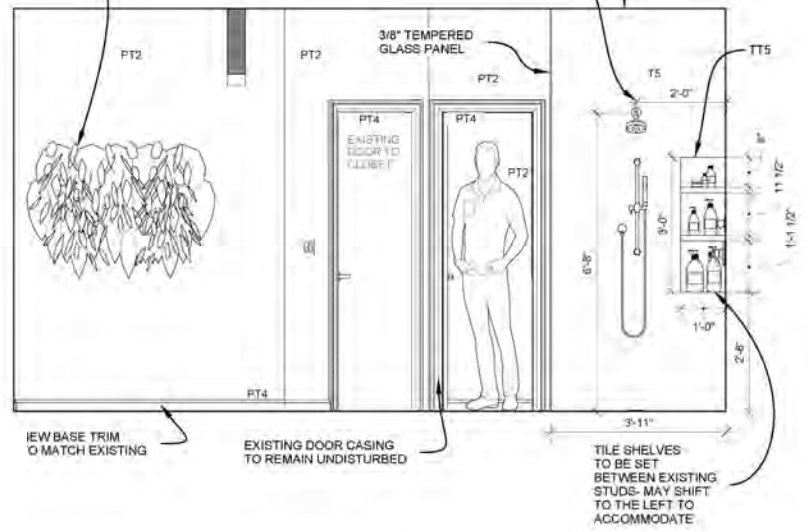




OPTIONAL ART
OR HANGING PLANTS

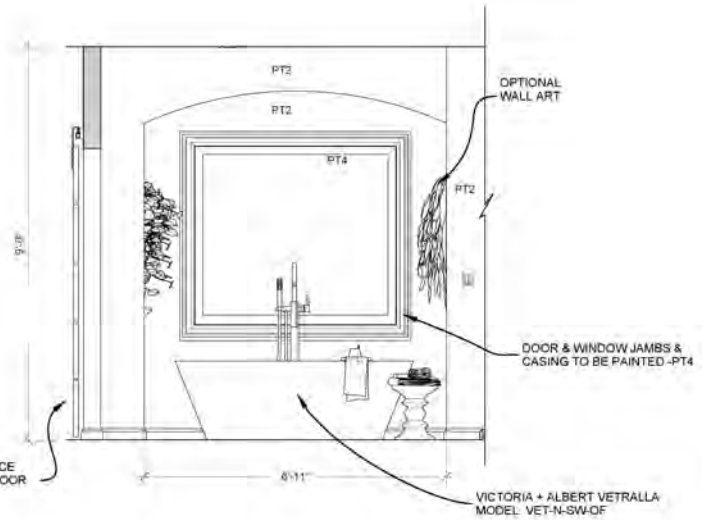
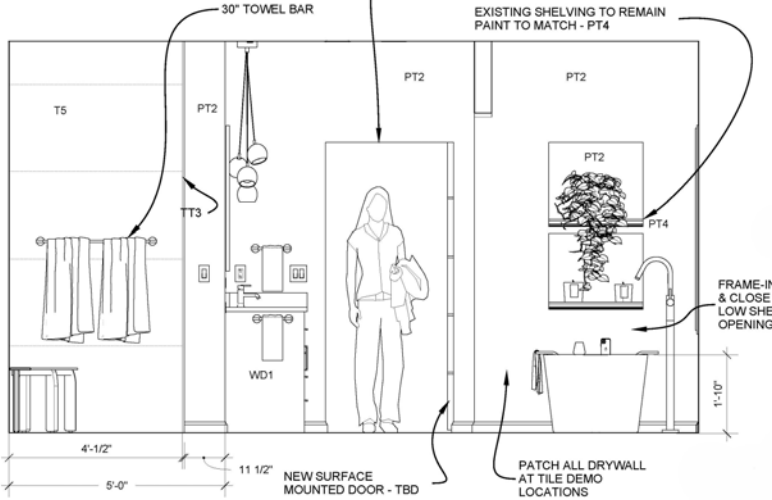
SHOWER PLUMBING - TBD

SHOWER CEILING
TO BE TILED



ARCHED OPENING TO BE SQUARED OFF
AT SAME HEIGHT AS BEDROOM ENTRANCE

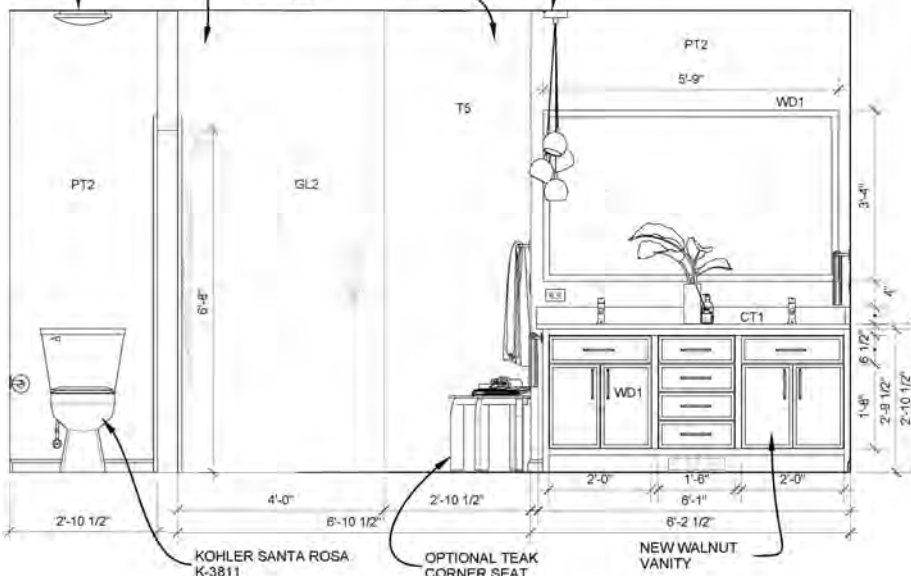
EXISTING SHELVING TO REMAIN
PAINT TO MATCH - PT4



NEW FLUSH MOUNT LIGHTING - TBD

3/8" TEMPERED GLASS PANEL
TILE SIZE & LAYOUT
PENDING

NEW PENDANT LIGHTING - TBD



When Its Time To Break Up With Your Bathroom

Having the occasional blinding light however, didn't mean the bathroom *felt* bright. Dark walls and builder grade finishes from 20 years ago exacerbated the outdated theme. The homeowners needed a change to match the way they wanted to feel. Every space in your home brings a feeling when you enter it. And our job was to help the homeowners envision what that answer was for them. From thoughtful placements of pendant lights, to releasing the tub and shower from their prisons, liberty and warmth is brought to life in this remodel. The fresh stone tile complementing the deep, yet soft warmth of the walnut vanity, brings a harmonious balance to tones and textures. This sanctuary invites the homeowners to their daily routine of *cleanse, exhale, and rejuvenate*.

Summary

Best said by the homeowners themselves . . .

"We love the end result. We think it's gorgeous. It fits the house and our personalities really well, and has just the right balance of elegance, luxury, and charm that we were looking for."

- Homeowners

