

MINNEAPOLIS BATHROOM REMODEL

design statement

This charming 1920's home renovation began with the Client's desire to create a new Primary Suite in her home. While she occupied the Primary Bedroom, the additional bedrooms on the upper level often hosted guests, and all shared a common hallway bathroom. While she loved hosting, she longed to have a private bathroom to create a Primary Suite. Her bedroom was spacious, to say the least – it had 6 windows – 6! But it lacked the functional closet space of modern design, and the idea of an en suite was very appealing.

With the goal of a second bathroom in mind, various space plans were considered, and the remodel you see today is the result of a great collaboration of homeowner and designer. Her new space now offers a hotel-like retreat right in her own home.

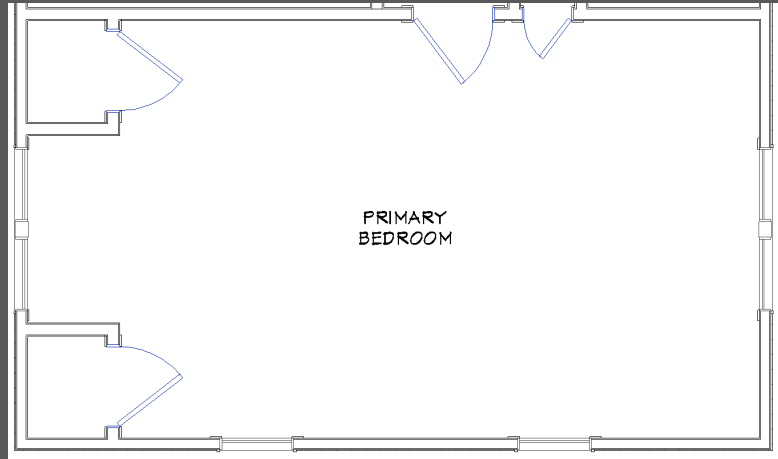


client objectives

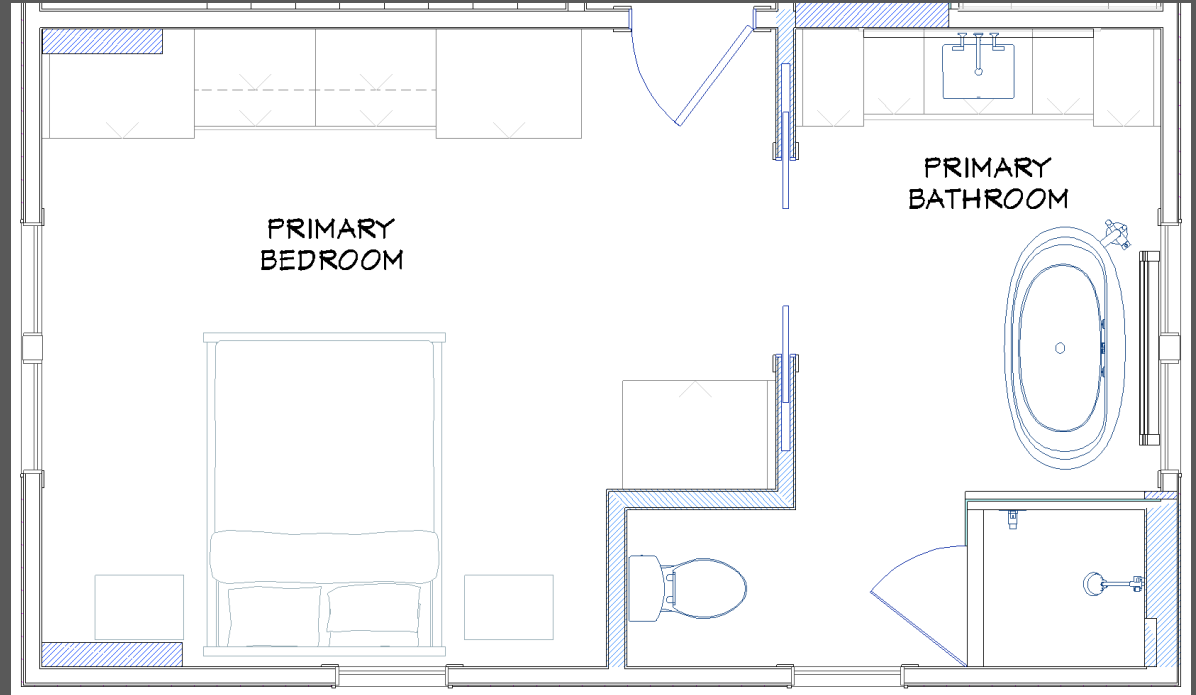
- ❖ Create a Primary Bathroom utilizing space within existing Primary Bedroom
- ❖ Create space for a free-standing bathtub
- ❖ Replace old radiators with a new slim-line model

MINNEAPOLIS BATHROOM REMODEL

before floorplan



after floorplan



MINNEAPOLIS BATHROOM REMODEL

before



after



The Primary Bedroom in this home was uniquely spacious, and full of natural light. The various small closets were always a challenge, and this remodel would help with that, too. A space plan like this one is a good example of how expert design can utilize existing space and transform it into something spectacular.

CHALLENGE!

Working with the many existing window locations was certainly a challenge, but ultimately no changes needed to be made. One window in the Primary Bedroom was replaced in the existing opening to meet egress compliance.

MINNEAPOLIS BATHROOM REMODEL

before



after



CHALLENGE!

Removing closets in the bedroom exposed HVAC venting that would need to be contained in new walls or cabinets. A sleek, discreet radiator was installed by the new freestanding bathtub to ensure adequate heat and comfort. All the millwork including base trim, casing, and crown molding were milled to match the existing home to ensure a seamless transition from old to new. An extensive planning process identifying these hurdles early in the process saved us many headaches once the space was being built.

MINNEAPOLIS BATHROOM REMODEL

before



after



The sleek new freestanding bathtub offers a nod to the home's history, while providing a chic, modern flair to the new bathroom. Paired with the stunning new shower with sparkling glass enclosure, this space exudes luxury and relaxation.

MINNEAPOLIS BATHROOM REMODEL

before



Pairing this deep, midnight teal tone with bright, creamy porcelain tile which very convincingly mimics marble, creates a sophisticated and timeless palette for the new bathroom. The new bold vanity is flanked by tall linen cabinets which will provide ample storage for towels and toiletries. A crisp quartz countertop with matching full-height backsplash paired with a wall-mounted faucet, provide a touch of dramatic elegance to this area. The gold fixtures here, and throughout the space, are the perfect jewelry to finish it all off, lending a timeless warmth throughout.

after



MINNEAPOLIS BATHROOM REMODEL



The new shower was also thoughtfully designed, featuring both a shower head and handheld shower, for ultimate convenience and comfort. Installing the controls at the door makes starting the shower a breeze, and a custom tiled niche provides storage for all the accoutrements. The frameless heavy glass enclosure is minimal in its design, offering clear views into the shower itself, making the space feel open and spacious. The fold-up bench offers a seat when needed, and tucks away neatly when not in use.