

Local Artisans Create “Wow” Remodel

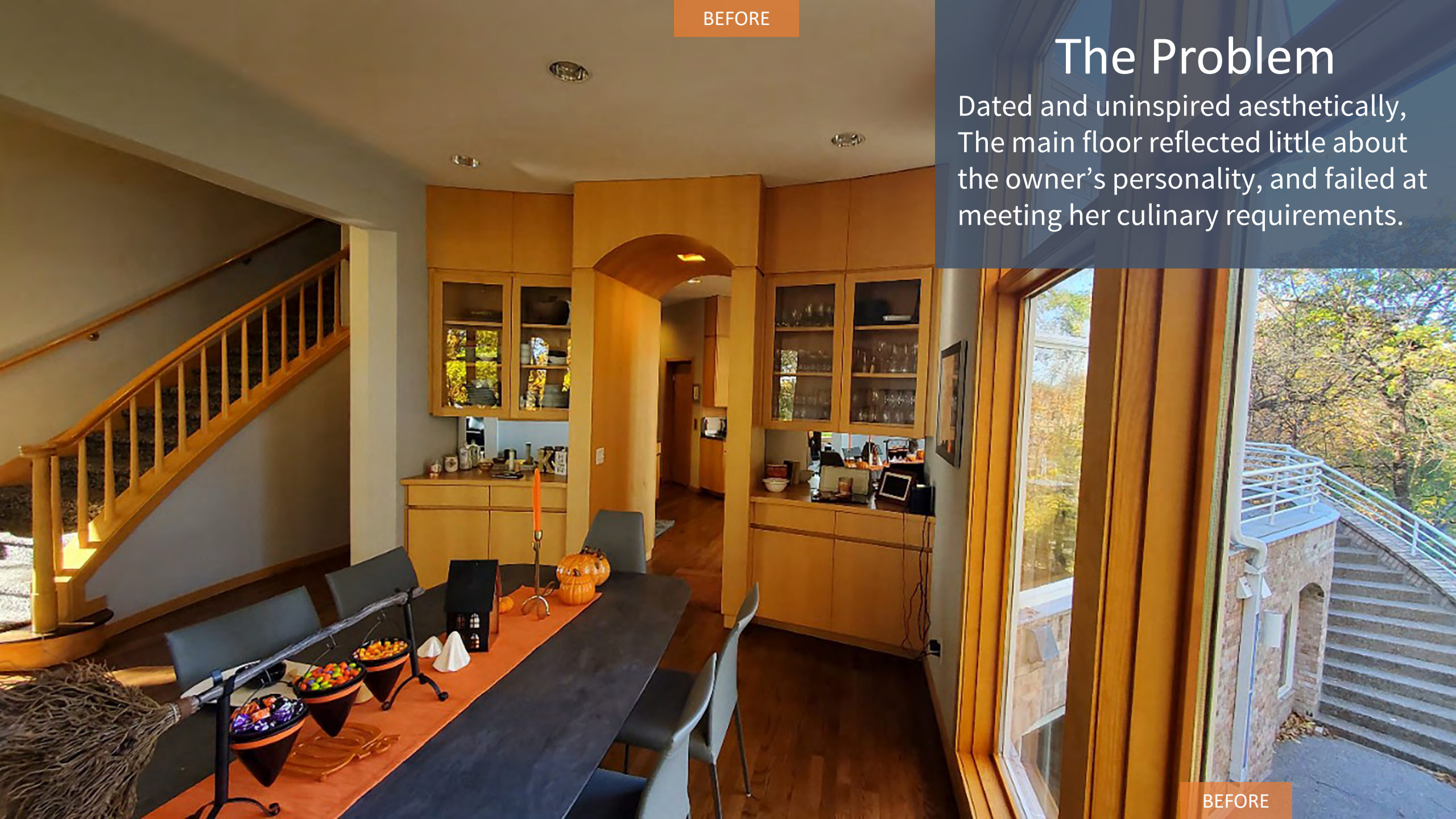
Entire House \$250,000 to \$500,000



BEFORE

The Problem

Dated and uninspired aesthetically, The main floor reflected little about the owner's personality, and failed at meeting her culinary requirements.



BEFORE

BEFORE

Scope of Work

- ✓ New front door
- ✓ Upgrade living room fireplace
- ✓ Dining room wall
- ✓ Artisan staircase
- ✓ New Kitchen
- ✓ Larger Pantry
- ✓ New Laundry
- ✓ Integrated Dog kennel
- ✓ Updated Bathroom
- ✓ Refinished Flooring

The walk-in pantry, with its chicken coop wire shelving, was cramped and useless. It might not have even been safe from a dry goods avalanche.



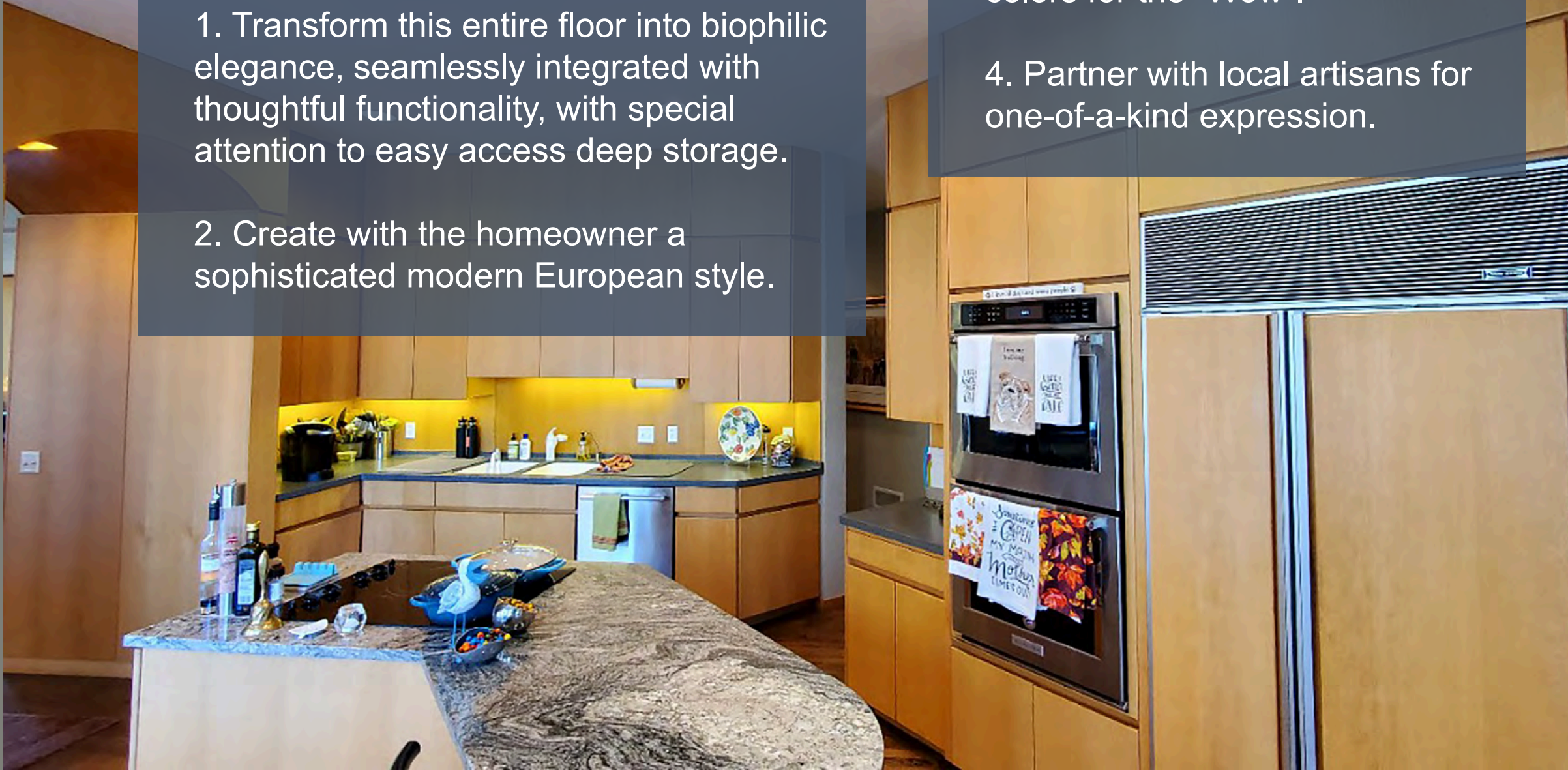
BEFORE

4 Client Goals:

1. Transform this entire floor into biophilic elegance, seamlessly integrated with thoughtful functionality, with special attention to easy access deep storage.
2. Create with the homeowner a sophisticated modern European style.

3. Use lots of exotic textures and colors for the “Wow”.

4. Partner with local artisans for one-of-a-kind expression.



1st Challenge

The front door needed replacing with a visual impact that matched the look and feel of the overarching entrance exterior interior.

BEFORE



2nd Challenge

The Stair newel post and railings needed a complimentary redesign and different materials to meet the stated objectives, but it had to work with the existing stair layout and base material.

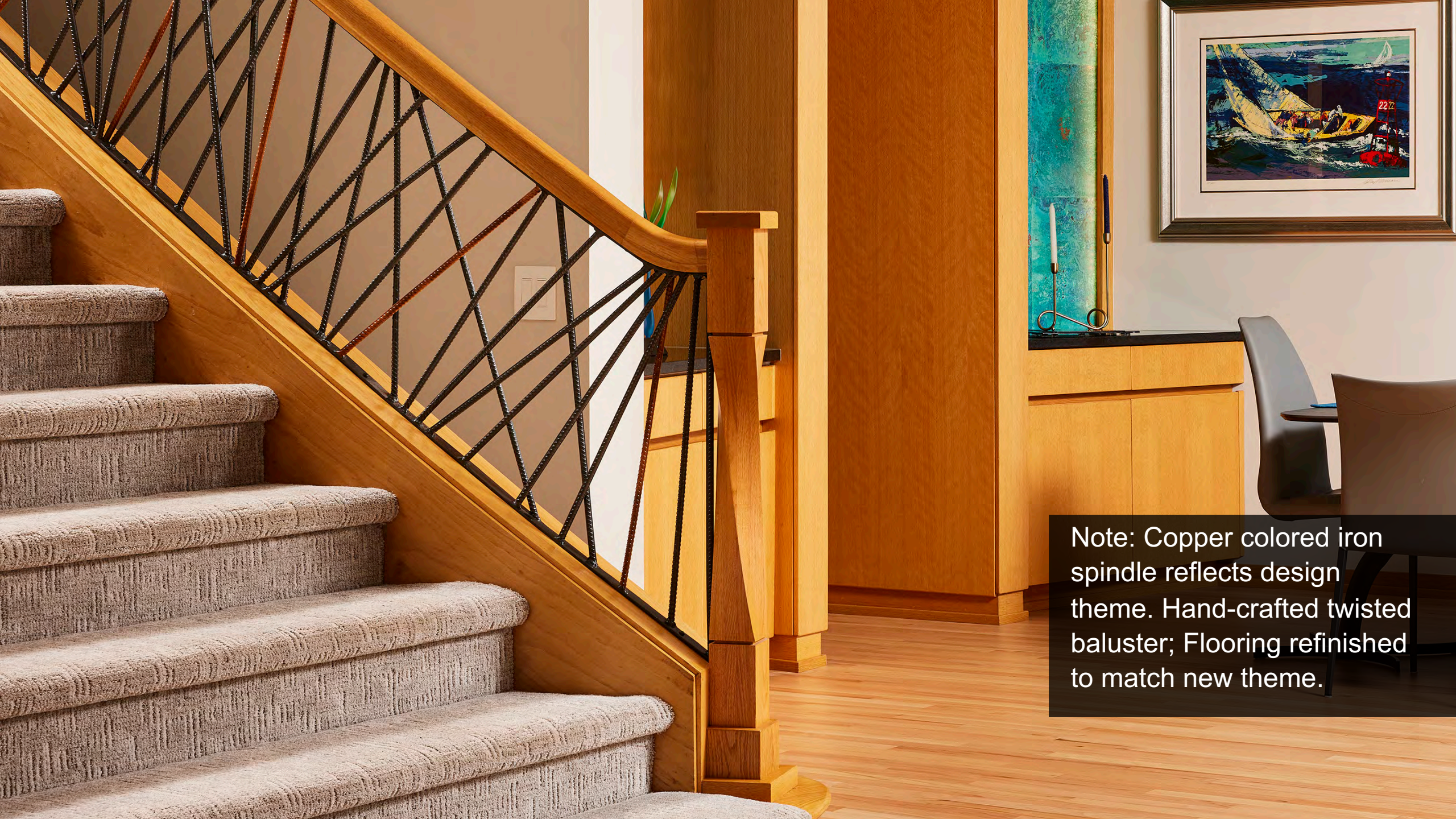
1st Solution

The front door was hand-crafted by a local artisan and stain-matched to trim by our 30-year veteran painter.

2nd Solution

Forged iron railings in the entryway introduce a multi-colored biophilic element of artisanal craftsmanship; the same material is utilized for the doors of the custom dog kennel in the laundry room, creating a unified design language.





Note: Copper colored iron spindle reflects design theme. Hand-crafted twisted baluster; Flooring refinished to match new theme.



2nd Goal Achieved

Flanking entry arch:
Copper Jade Blue
19x19 tile squares with
LED side lighting makes
that “Wow” statement.

3rd Challenge

Copper. The homeowner insisted on a copper accent tile from the Netherlands. A kitchen island wrapped in copper tile and embedded in each backsplash tile. We solved the unexpected adverse chemical interaction with today's grout with a water-borne polyurethan spray.

3rd & 4th Goals Achieved

Exotic copper materials used; Local artisan-created wish-bone foot to support custom Annicca Cambria countertop.



1st & 2nd Goals Achieved

Transform this entire floor into elegance, seamlessly integrated with thoughtful functionality, with special attention to easy access deep storage drawers with grain-matched drawer fronts.



1st Goal Achieved

Modern sophisticated European style.

The flat dark green cabinetry adds more European sophistication. High-end appliances further enhance the kitchen's functionality, catering to even the most demanding culinary needs.



1st Goal Achieved

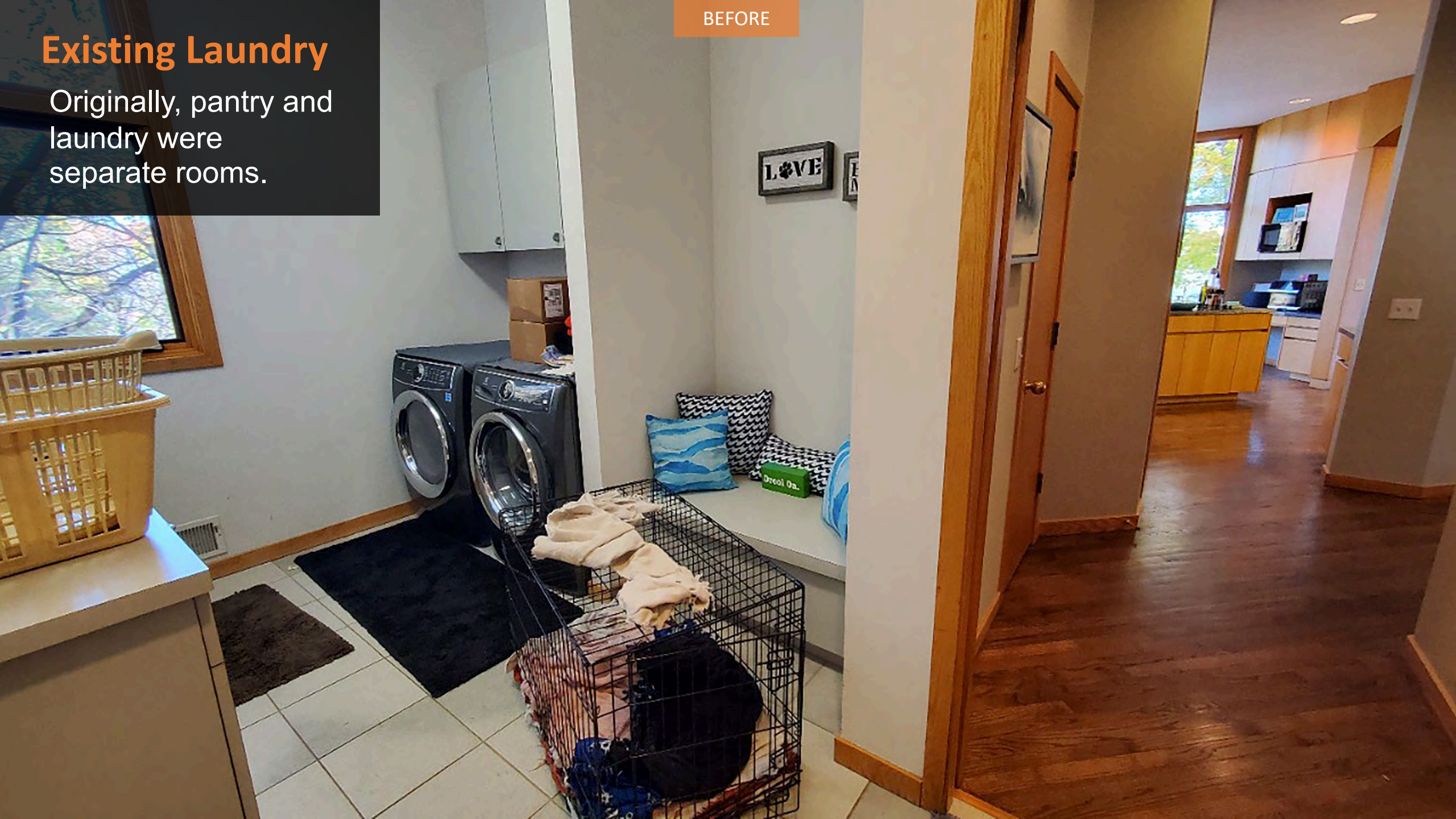
More biophilic design
marries Hewlett Black
Iron tile fireplace
surround with a wood
seat, glass 12x24" gas
unit.



Existing Laundry

Originally, pantry and laundry were separate rooms.

BEFORE

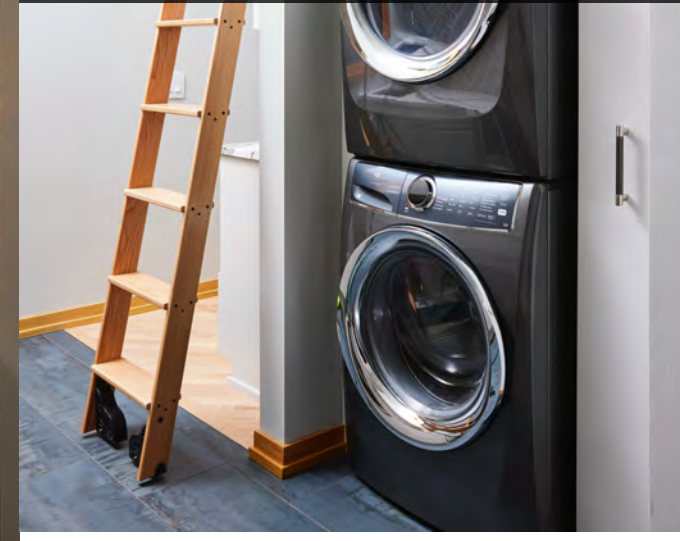




1st & 2nd Goals Achieved

Thoughtful functionality;
artisan contribution.

Space efficient stacked
laundry; dog kennel doors
mirrors iron staircase
spindles and overall
biophilic design in the use
of copper and Angela
Harris Inspira Oxide
Metallic Blue ceramic
floor tile. Rise Hexagon
cement tile backsplash.

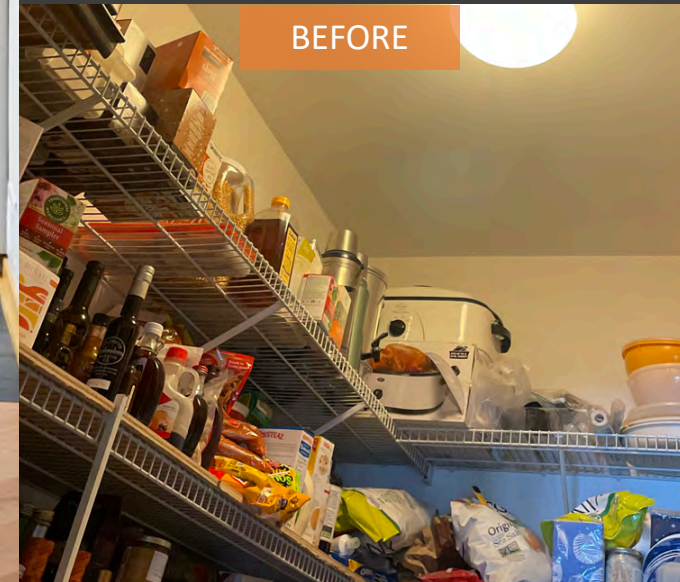




1st Goal Achieved

Thoughtful functionality.

Now adjacent, these rooms were reunited into an "L" shaped layout so that one entire hallway could be transformed into easy access to everything. Storage is tripled via loor-to-ceiling pantry, accessed by a librarian's ladder.



BEFORE



Kohler Brazn 23"
vitreous China vessel
bathroom sink



1st & 2nd Goals Achieved

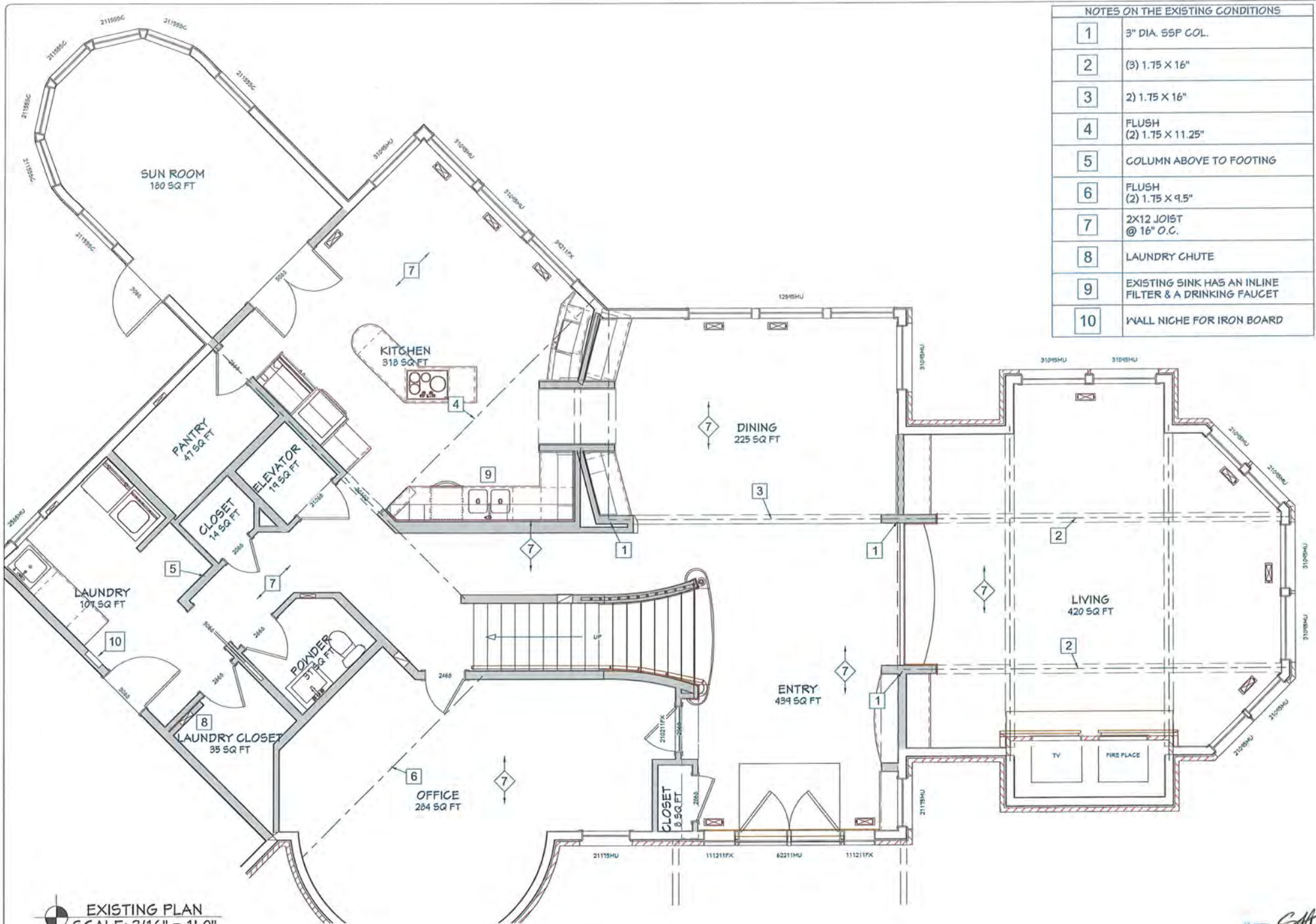
Thoughtful functionality;
European style.

The ½ bath was redesigned
using a stacked approach to
maximize storage and
access, LED mirror and
defogger.



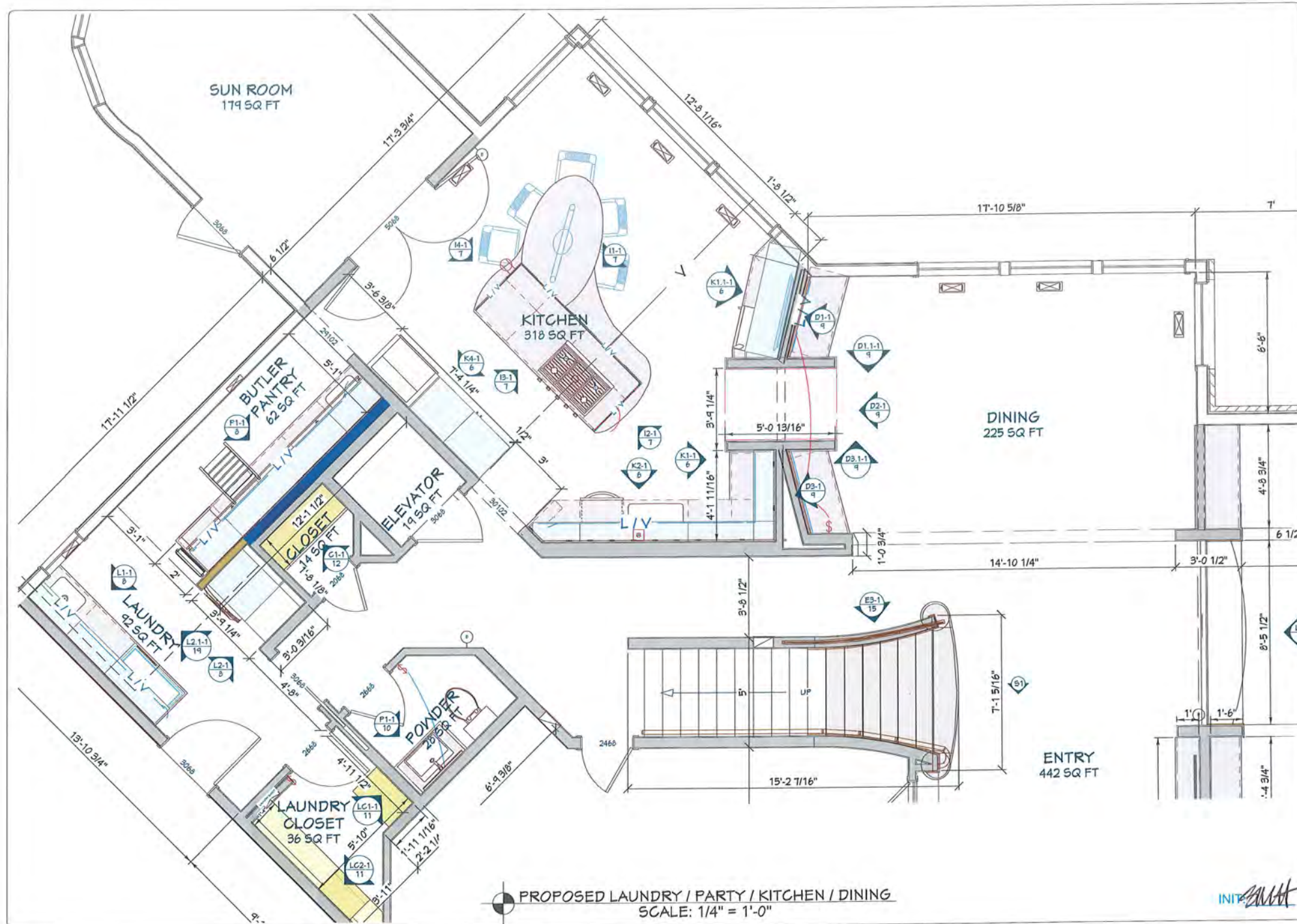
BEFORE

EXISTING CONDITIONS



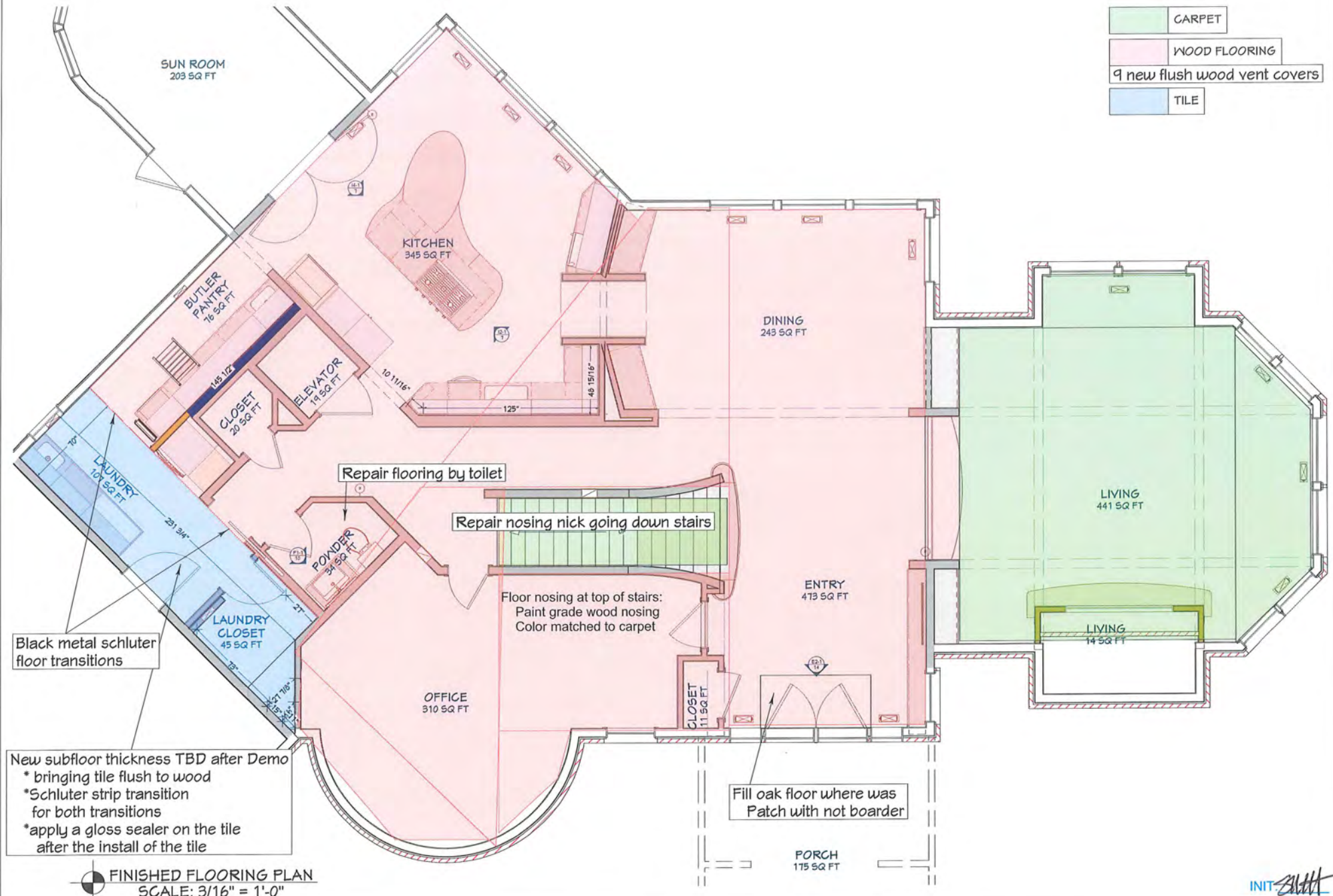
MAIN LEVEL

PROPOSED PLAN



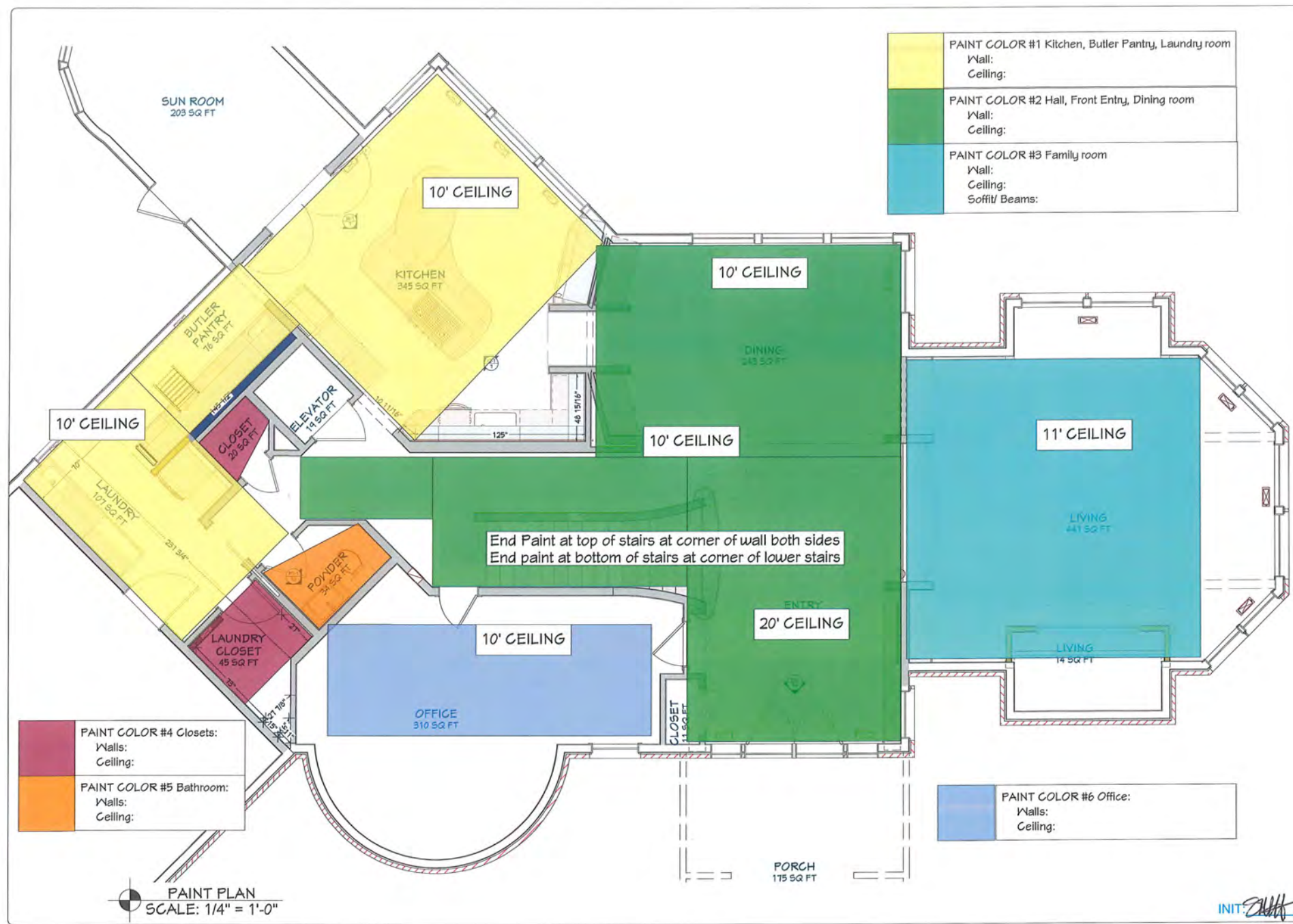
OVERALL Plan

PROPOSED PLAN



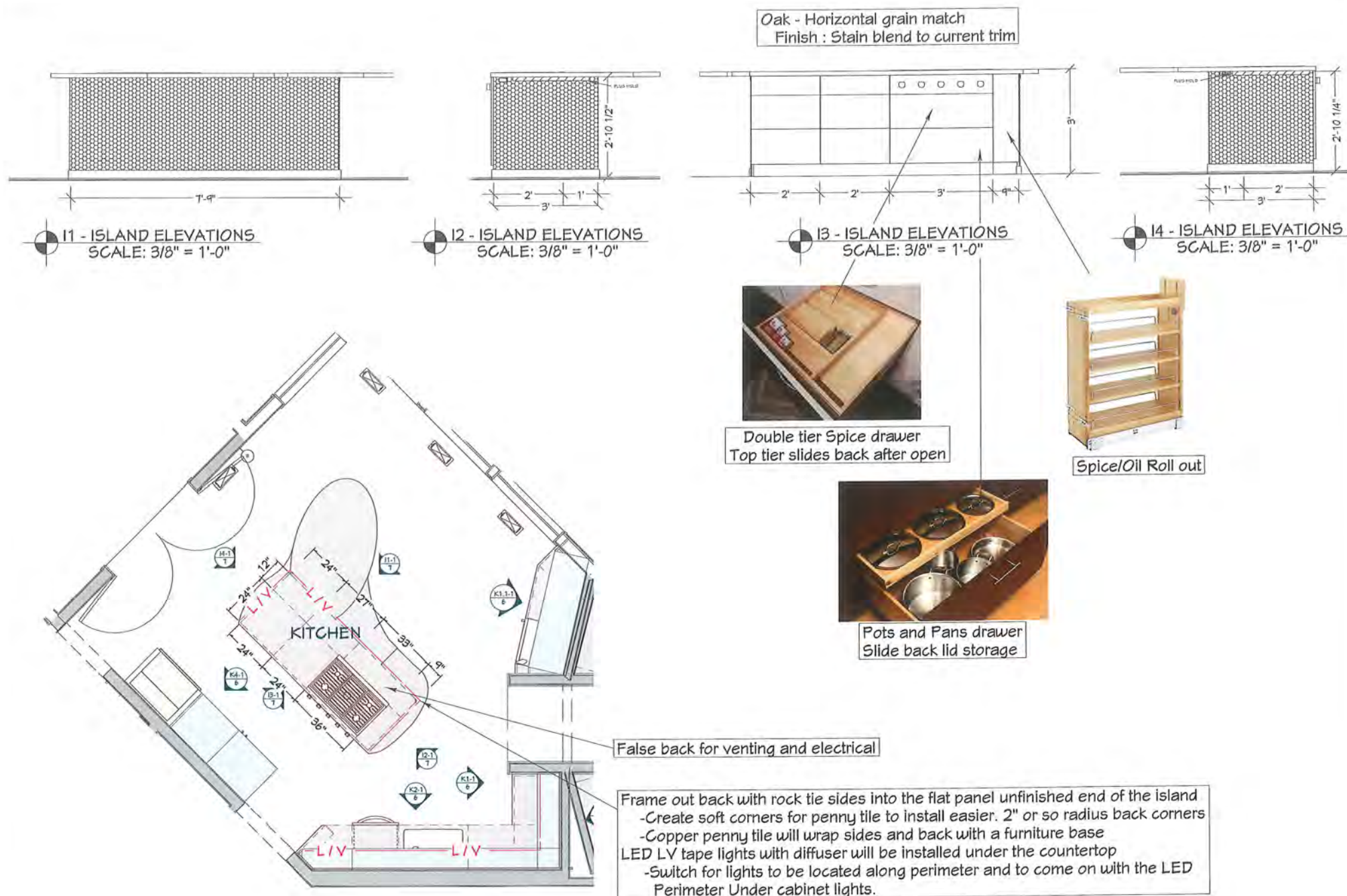
FLOORING PLAN

PROPOSED PLAN



PAINT Plan

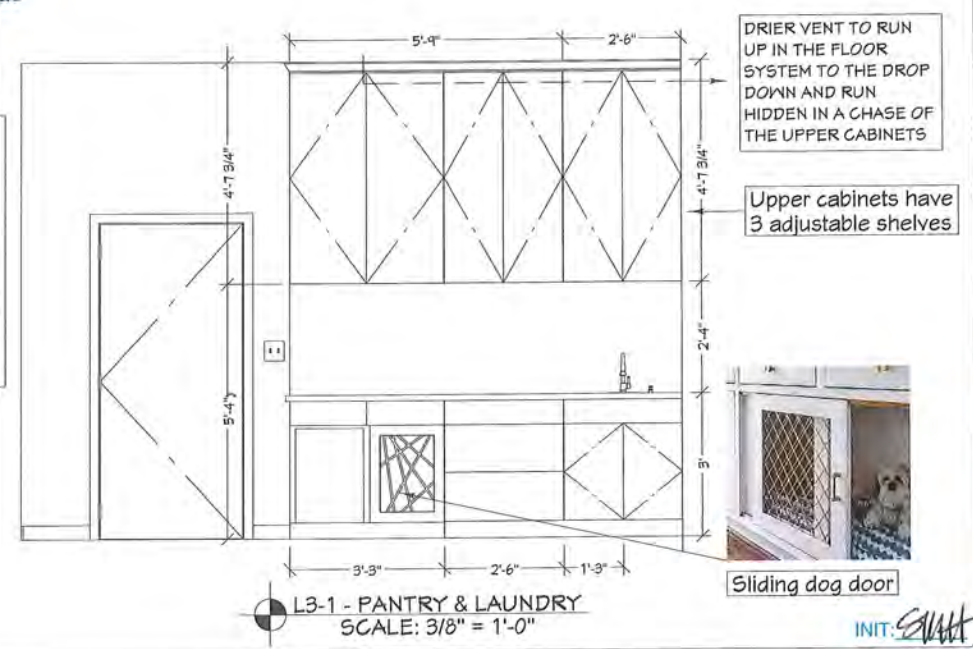
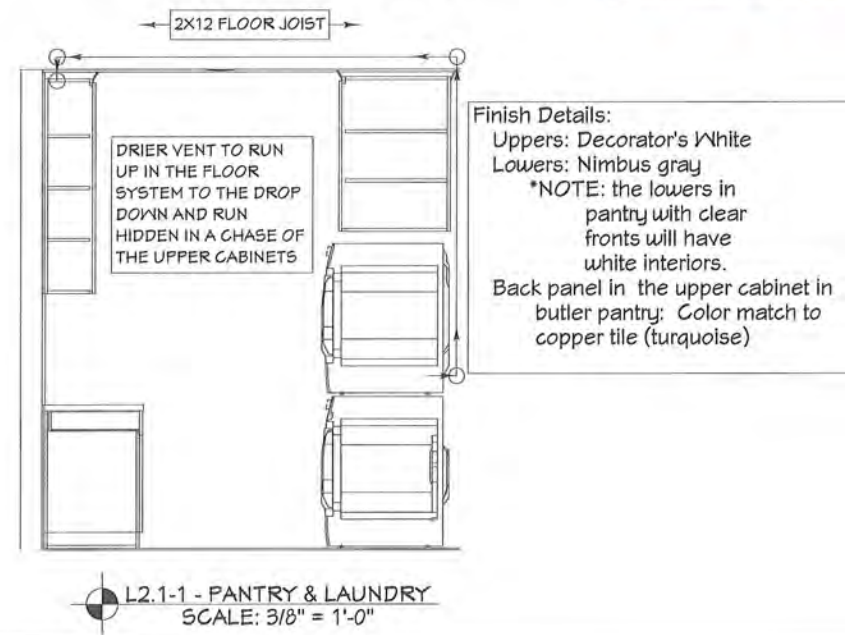
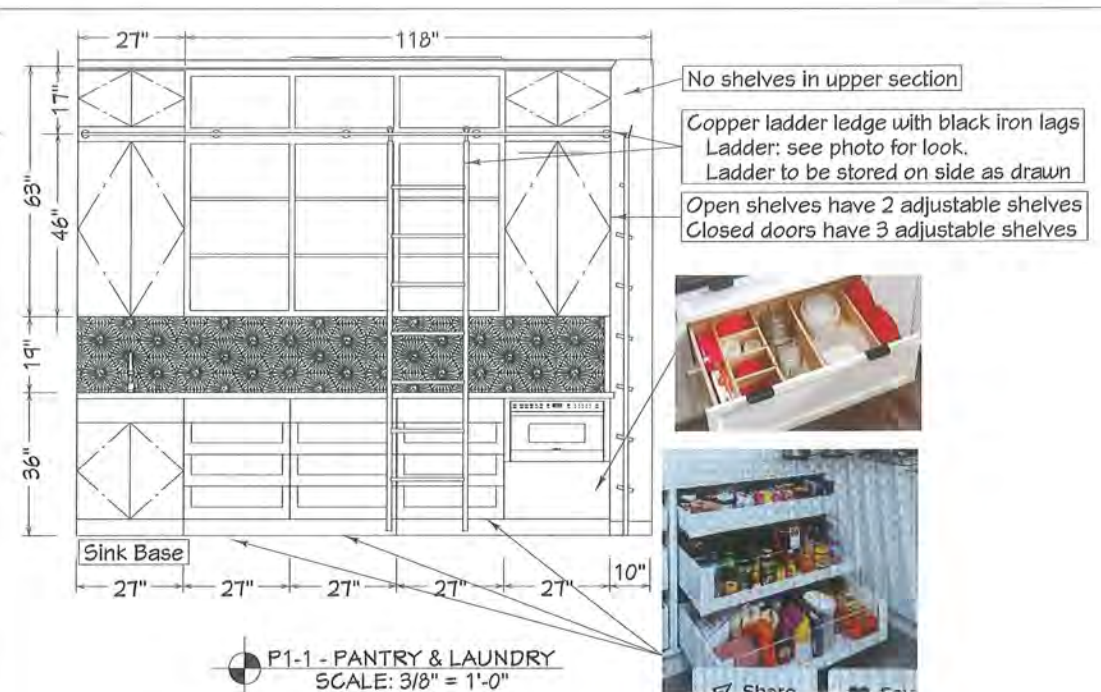
PROPOSED PLAN



KITCHEN Plan

PROPOSED PLAN

PANTRY Plan



INIT: *[Signature]*

PANTRY Plan

