



BASEMENT
Over \$250,000

Client Needs | BEFORE



Client Needs

The family of six enjoyed welcoming friends and relatives into their home for both short visits and longer stays. Their goal was to transform their unfinished basement into a comfortable space for overnight guests, particularly the owner's mother who liked to stay for extended visits.

To ensure her comfort, the fully finished guest suite is accessible on one level and includes a family/game room, full kitchen, bedroom, bathroom and laundry facilities. What was once an unfinished basement is now a luxurious retreat for guests, which the family also enjoys.

Functionality

Prior to remodeling, the basement was primarily used as storage for kids' toys, sporting goods, seasonal items, etc.

The unfinished space was a blank canvas that presented exciting possibilities. It also posed the challenge of determining how to best optimize the considerable square footage.





Craftsmanship

The family room became the natural starting point. The white stone fireplace sets the tone for the entire lower level, striking a balance between rustic charm and contemporary elegance. Wood-topped benches on either side are cozy and welcoming.

Wainscot paneling with a drink rail is a beautiful custom detail. Warm wood accents, ceiling beams and wood flooring tie the space together. A custom-installed sound system brings the vision to life.



Before & After | LOWER LEVEL



Before



After

Before & After | LOWER LEVEL



Before



After

Innovation

Full Kitchen

The full kitchen was designed with the owner's mother in mind. It is fully equipped with everything the avid cook might need, including custom storage solutions, gourmet appliances and an elegant marble-inspired quartz countertop and backsplash.



Before & After | KITCHEN



Before



After

Before & After | KITCHEN



Before



After



Aesthetics

Selections & Finishes

- Marble-inspired polished quartz countertops and full-height quartz backsplash
- Maple ceiling in a herringbone pattern
- Vibrant brushed brass fixtures and hardware
- Floating shelves with LED recessed lighting
- Glass-front cabinets and undercabinet lighting
- Island with seating area and cabinets below

Functionality | FULL KITCHEN

- Gourmet appliances
- Electric cooktop and custom hood
- Dishwasher drawer
- Warming drawer/oven/microwave
- 42" paneled refrigerator
- Beverage refrigerator
- Ice maker
- Tray divider
- Appliance garage
- Locking liquor cabinet
- Pull-out waste and recycling bins
- Maple cutting board





Bar/Game Room

Bar seating, a beverage station with under-cabinet refrigerator and a foosball table help create the perfect entertaining space.

Before & After | LOWER LEVEL



Before



After

Functionality | BEDROOM SUITE



Bedroom Suite

The owner's mother's comfort was top of mind when designing the bedroom suite. Accessibility was the priority, but creating a beautiful and serene retreat was just as important.

Despite its size, the bedroom accommodates a queen-sized bed along with space for seating and a full closet. The television is mounted on a swivel arm, allowing for easy adjustment and angling.

Most importantly, the full bathroom and washer/dryer are easily accessed through an adjoining door.



Before & After | BATHROOM



Before



After

Innovation | BATHROOM

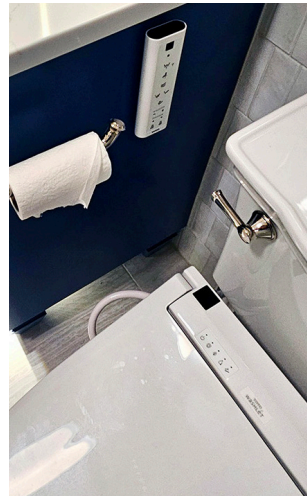
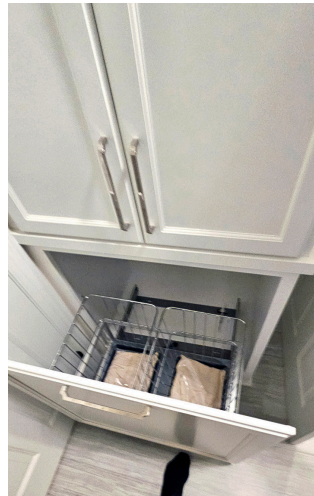
Accessibility Features

The bathroom is accessed from both the main hallway and the adjoining bedroom.

Convenience features include a linen closet with pull-out bins and a full-sized stacked washer and dryer. The medicine cabinet has built-in outlets and a flip-out magnifying mirror.

The walk-in shower, fitted with thoughtfully-positioned grab bars and multiple body sprayers, is both practical and luxurious.

The soft-close bidet toilet seat is equipped with an illuminated touchpad remote. Under-cabinet lighting in the vanity is useful when navigating in low-light conditions.



Craftsmanship | BATHROOM



Selections & Materials

The wall tile is a unique combination of two tiles, alternating matte and shiny, laid vertically to make the space feel taller. The rich blue vanity is complemented with sleek polished nickel fixtures.

For maximum luxury, the flooring is porcelain tile with electric in-floor heat.

“Thank you for all the work you did in finishing our basement,” said the owners. “Words cannot express how much we love it, and we still find it hard to believe it is just down the steps!”

“It was an absolutely pleasure working with you from start to finish. The communication, efficiency, friendliness and ability to stay on schedule truly sets you apart.”

Before & After | LOWER LEVEL

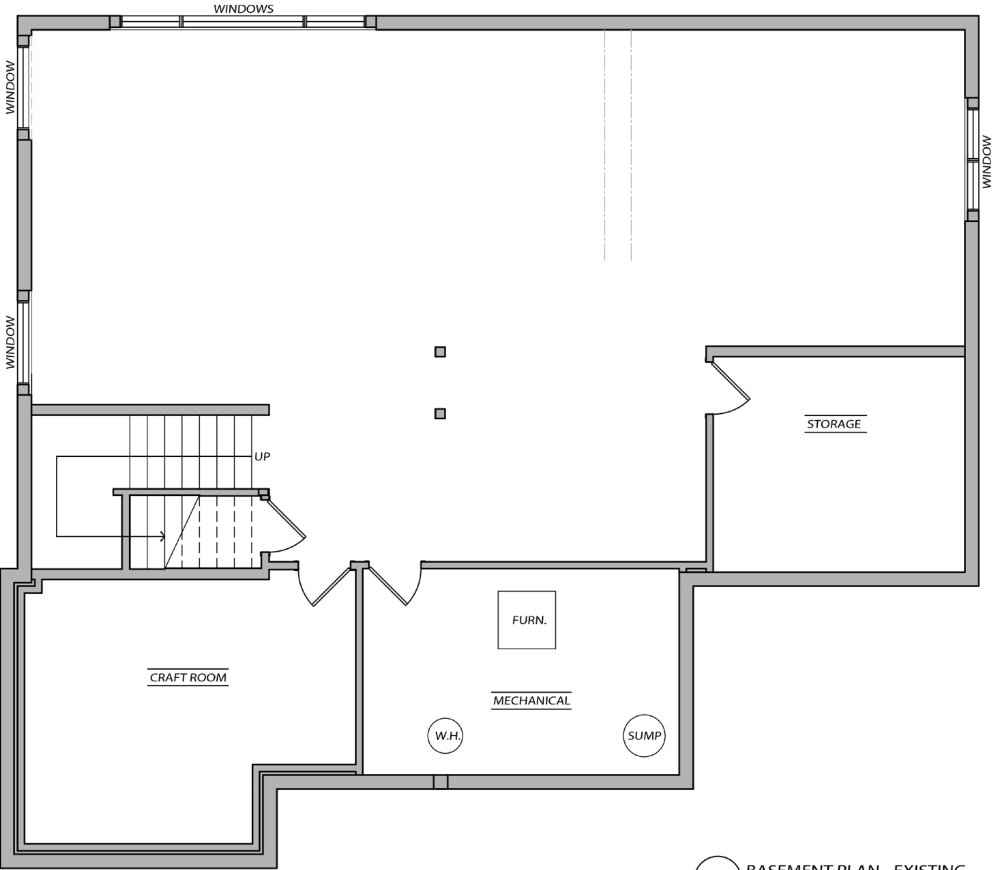


Before

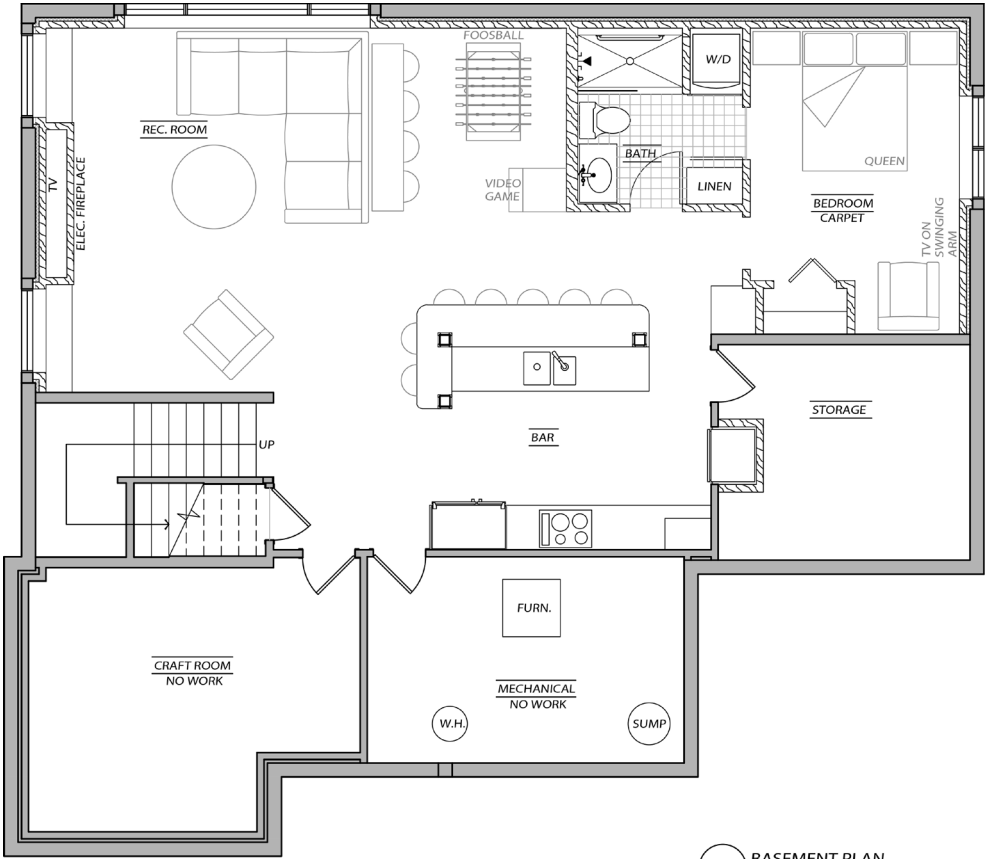


After

Floor Plan | BEFORE & AFTER

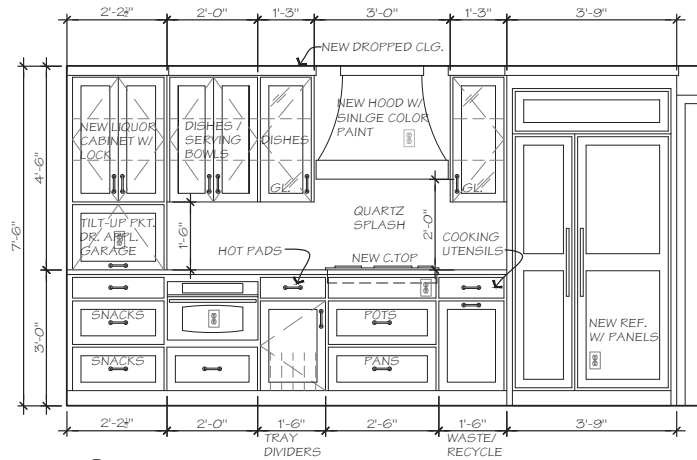


Before

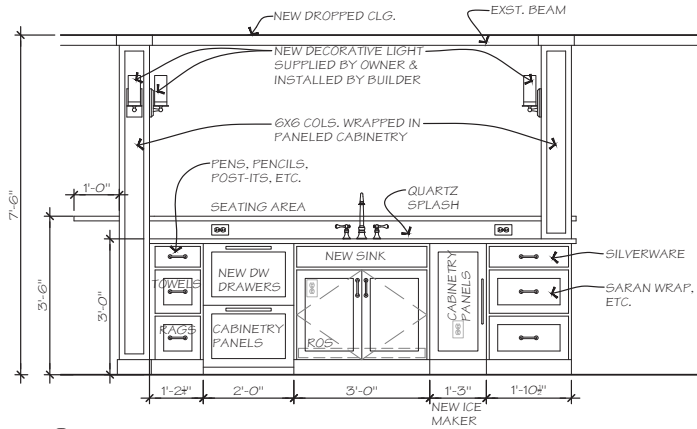


After

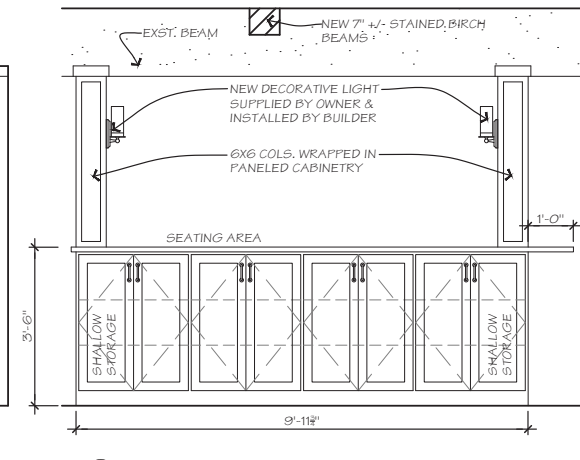
Elevations | KITCHEN & BAR



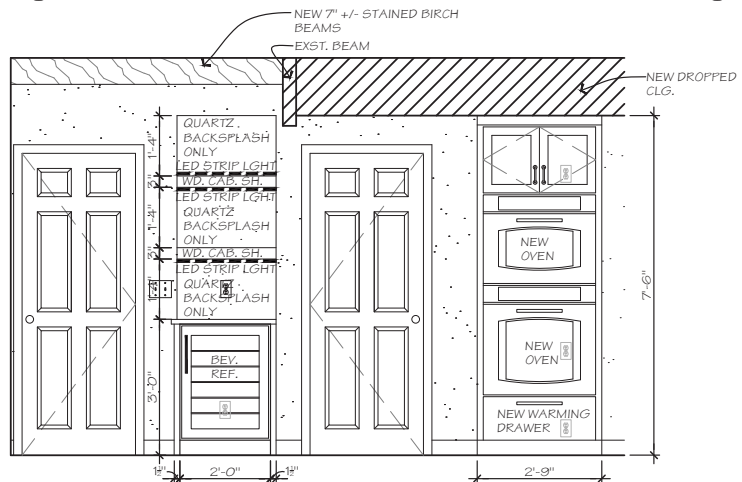
1) BAR ELEVATION
SCALE: 1/2"=1'-0"



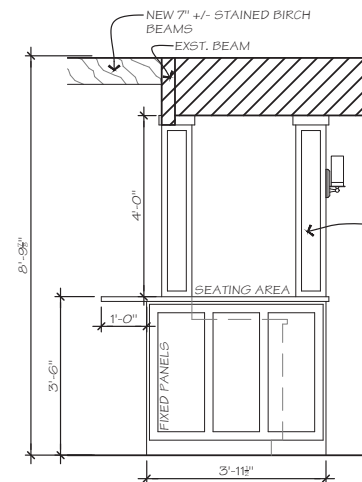
2) BAR ELEVATION
SCALE: 1/2"=1'-0"



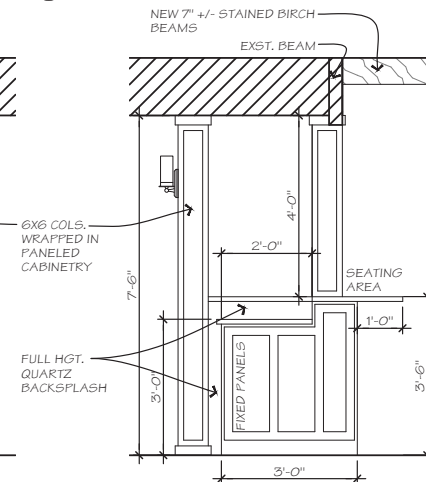
3 BAR ELEVATION
SCALE: 1/2"=1'-0"



4) BAR ELEVATION
SCALE: 1/2"=1'-0"

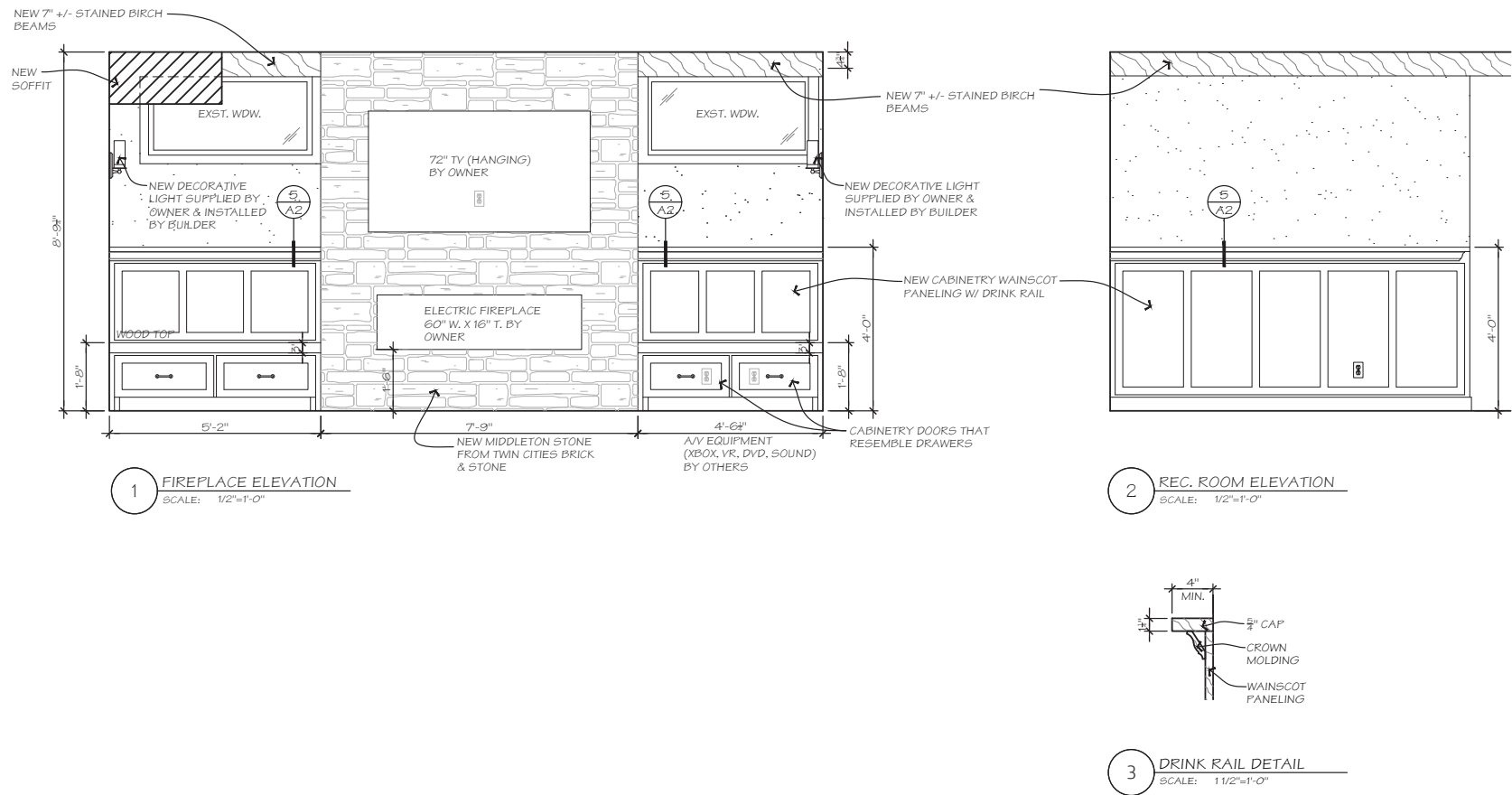


5 BAR ELEVATION
SCALE: 1/2"=1'-0"



6 BAR ELEVATION
SCALE: 1/2"=1'-0"

Elevations | FAMILY ROOM



Elevations | BATHROOM

