

# NARI MINNESOTA – 2025 ROTY AWARDS

PROJECT: THE LOWER LEVEL LUXE  
CATEGORY: Basement Over \$250,000

When we first stepped into this basement, it was an unfinished, unusable space—bare concrete floors, exposed walls, and little promise of comfort. Our clients saw potential and wanted more than just extra square footage; they envisioned a retreat with architectural character, thoughtful details, and the same sense of style carried throughout the rest of their home.

To help them visualize the transformation, we created detailed 3D renderings that showcased layout options, material selections, and the overall flow of the space. This step gave the clients confidence in every design decision and ensured that the final product aligned seamlessly with their vision.

The build-out brought the renderings to life: a custom wine room became the heart of the entertaining area, panel-front appliances and under-cabinet lighting gave the kitchenette a sleek, integrated look, and beams were added to highlight ceiling height. Sconces created a warm, layered glow, while a fireplace with custom millwork became a striking focal point.

Beyond entertaining, the lower level now serves the family’s lifestyle with a workout area, a private guest bedroom, and a spa-like bathroom reminiscent of a boutique hotel. By incorporating finishes and design details from the main home, the basement feels cohesive and connected—an elegant retreat that looks nothing like the cold, empty space it once was.

### CLIENT NEEDS:

- Transform an unfinished basement into a livable, multi-functional space
- Add architectural details for character and visual interest
- Create a custom wine room for entertaining
- Include plenty of storage solutions
- Design a custom fireplace with detailed millwork as a focal point
- Provide a workout area and private guest bedroom
- Build a spa-like bathroom with a hotel-inspired feel
- Ensure finishes connect with the main home for a cohesive design
- Use 3D renderings to visualize layouts and material selections before construction
- Incorporate layered lighting—including sconces and accent fixtures—to create depth and a warm, inviting ambiance
- Integrate technology for immersive sound and movie watching

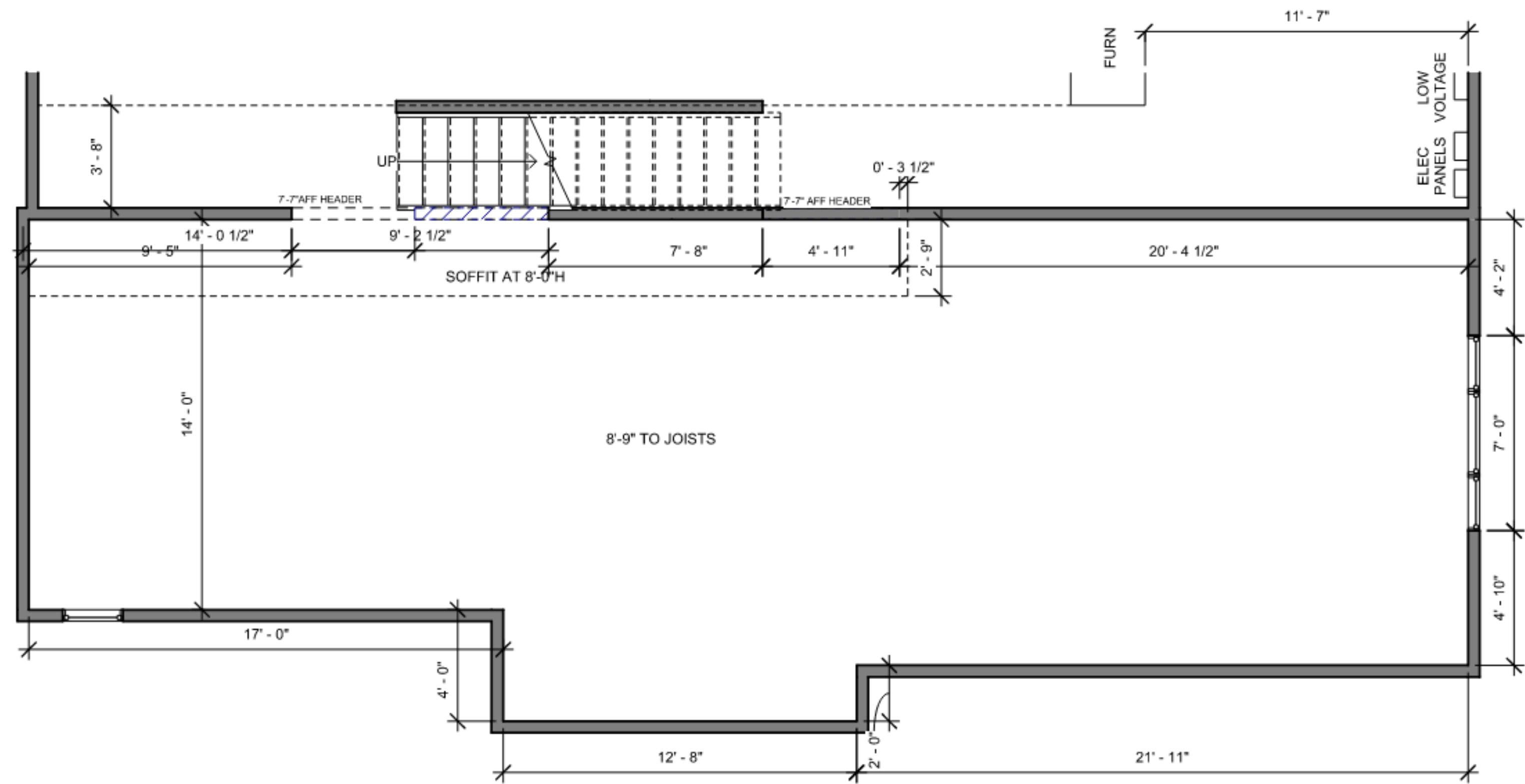




BEFORE PHOTOS

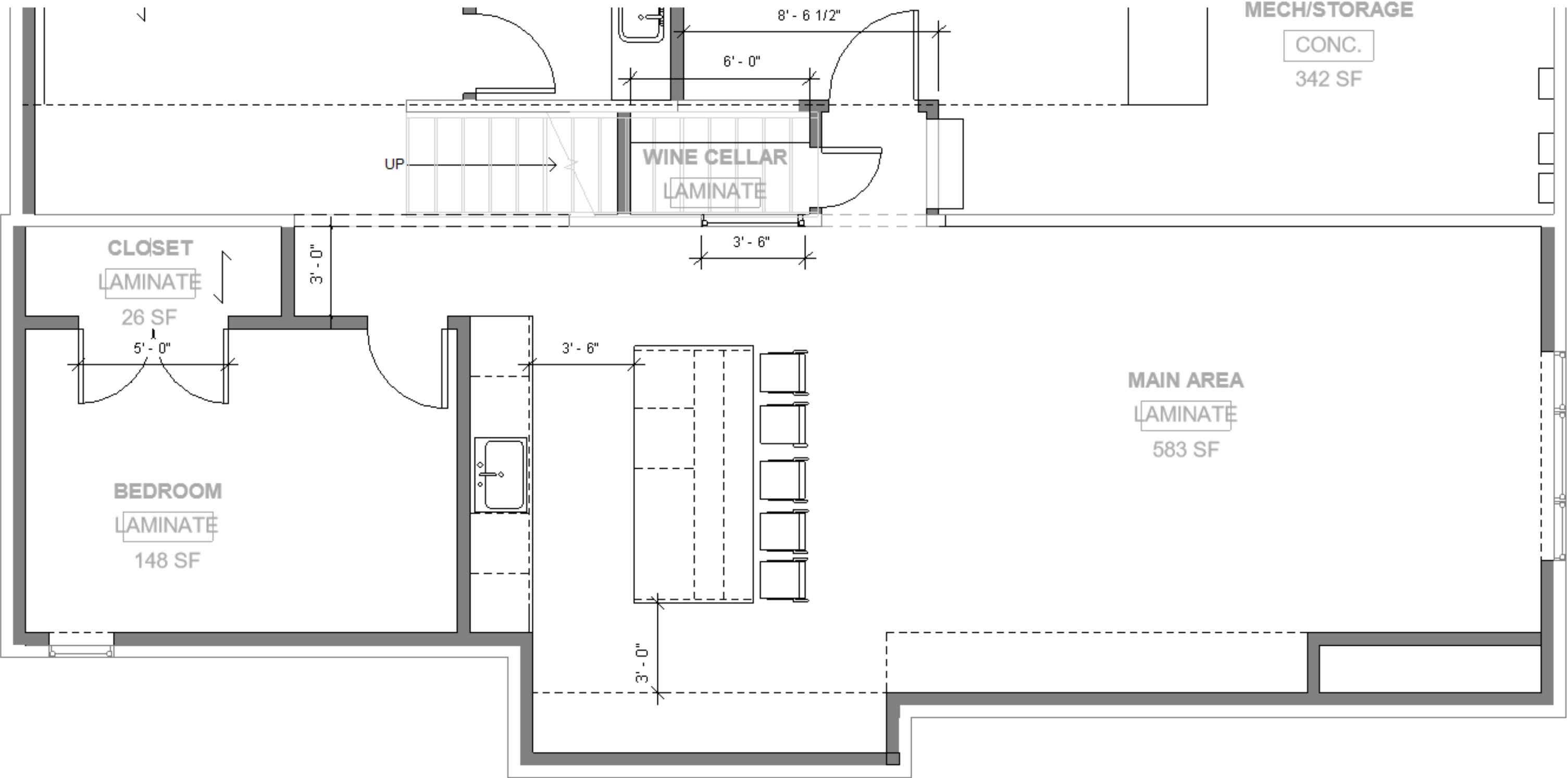


BEFORE FLOOR PLAN – LIVING AREA AND BEDROOM

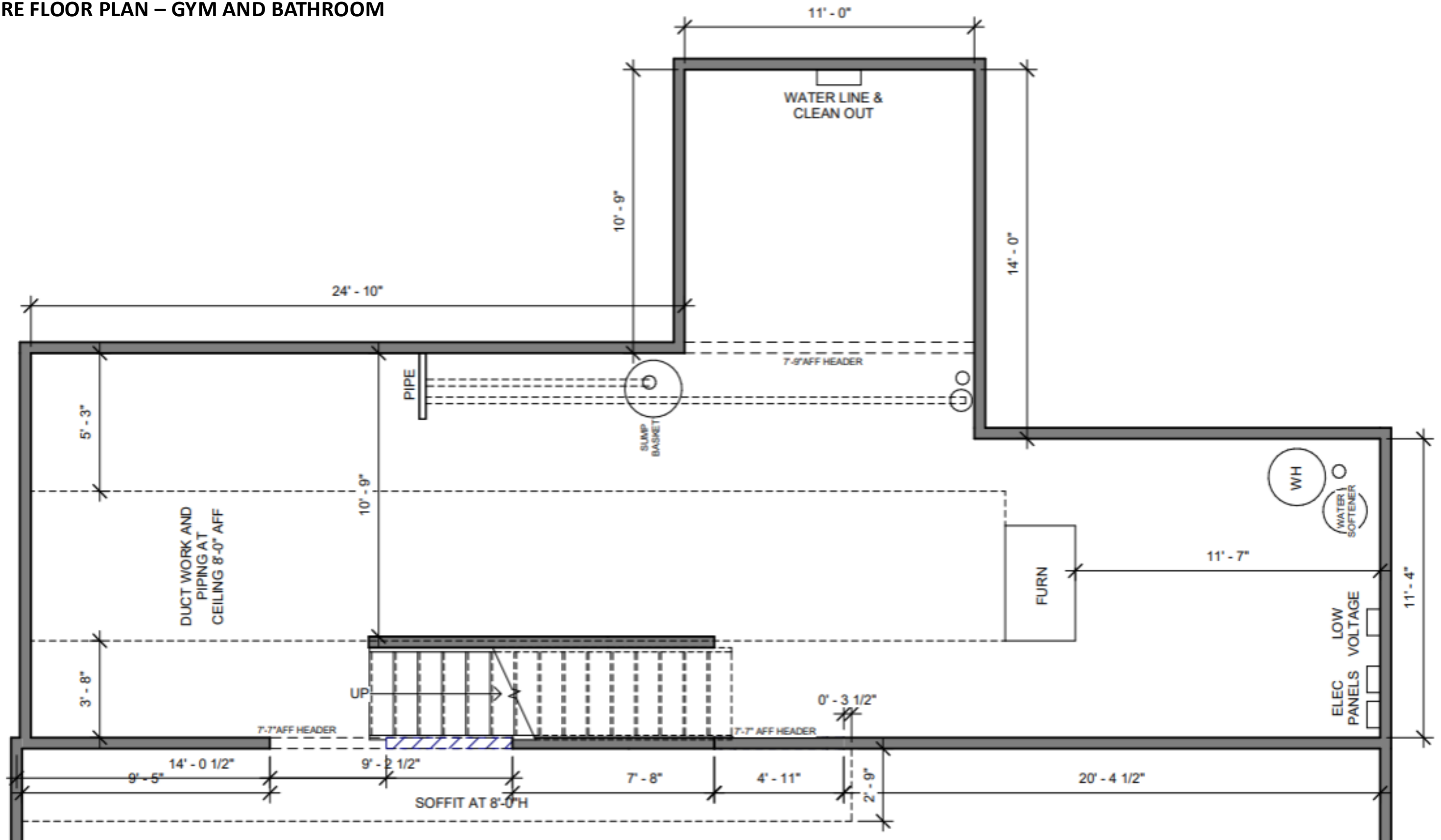




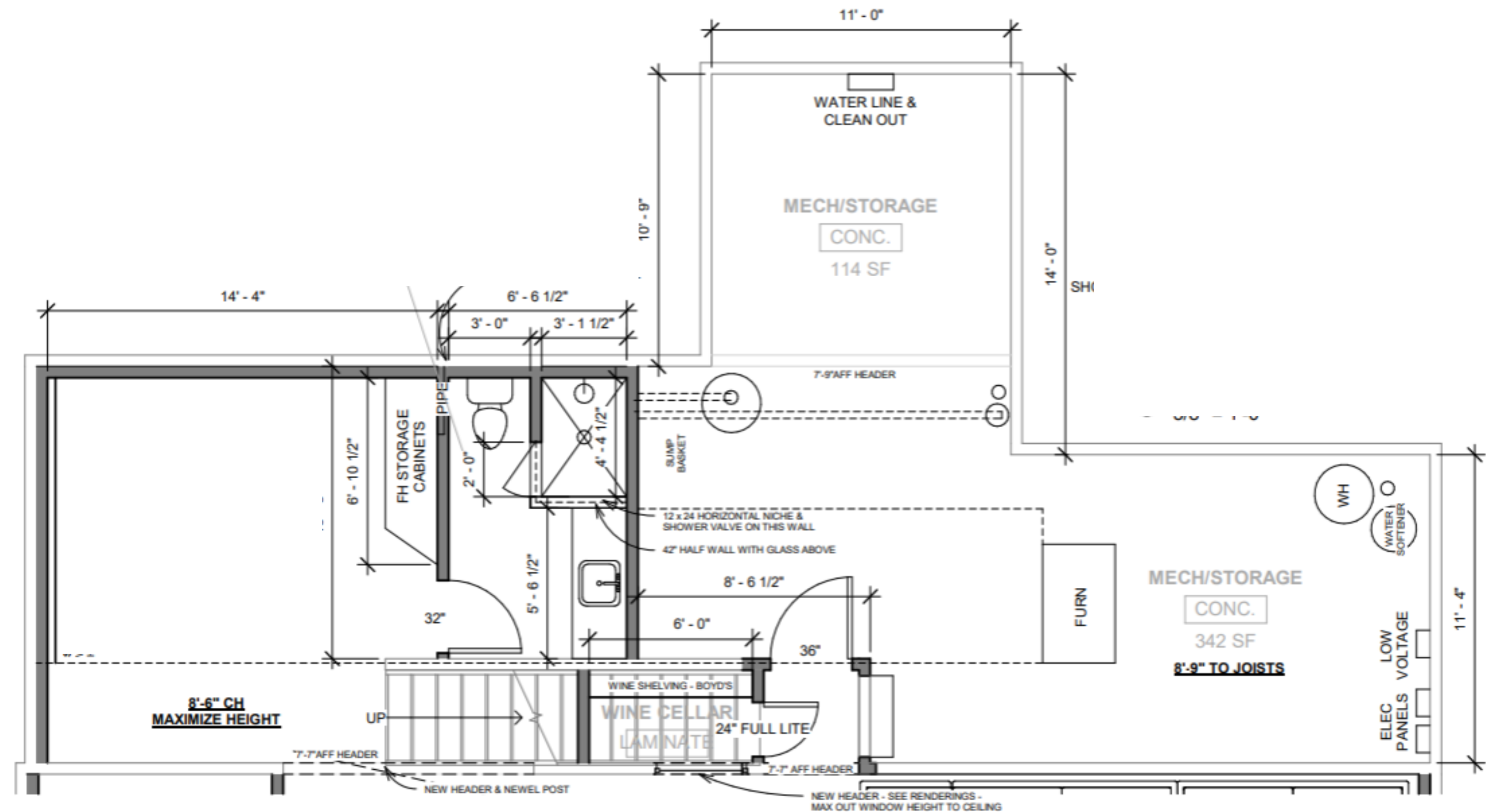
AFTER FLOOR PLAN – LIVING AREA AND BEDROOM



## BEFORE FLOOR PLAN – GYM AND BATHROOM



AFTER FLOOR PLAN – GYM AND BATHROOM



3D RENDERINGS



The Lower Level Luxe – 2025 ROTY AWARDS – Basement Over \$250,000



3D RENDERINGS





**BEFORE AND AFTER PHOTO**





BEFORE AND AFTER PHOTO





BEFORE AND AFTER PHOTO





BEFORE AND AFTER PHOTO





# FUNCTIONALITY

- Dedicated workout area to support an active lifestyle
- Hidden speakers for high-quality audio without disrupting the design
- Layered lighting for adaptable ambiance suited to various activities
- Multi-purpose layout accommodating entertaining, relaxation, and fitness
- Private bedroom for guests or family use
- Custom wine room designed for storage, display, and easy access during gatherings
- Appliances positioned for accessibility to all ages for convenience and ease of use





# AESTHETICS

- Finishes and design elements pulled from the main home for cohesion
- Custom fireplace with detailed millwork as a striking focal point
- Panel-front appliances for a sleek, seamless, built-in look
- Beams to accentuate ceiling height and add architectural interest
- Spa-like bathroom with hotel-inspired finishes and luxury details
- Open staircase to create a more spacious, connected feel
- Thickened countertop edges for an elevated, high-end appearance





## CRAFTSMANSHIP/INNOVATIVE METHODS AND USES

- Custom millwork for fireplace, wine room, and cabinetry requiring precise joinery and attention to detail
- Custom cabinets designed for both function and style
- Layered lighting meticulously planned for ambiance and functionality
- Incorporating finishes from the main home for a connected, harmonious look
- Installing hidden speakers behind walls without affecting aesthetics
- Open staircase designed for a spacious feel while meeting structural requirements



## PROJECT CHALLENGES

- Adding soffits to work around existing HVAC systems while incorporating beams seamlessly within the soffits
- Incorporating ample storage while keeping the space uncluttered
- Designing an open gym area that looks clean, organized, and inviting
- Creating a high-end, hotel-inspired bathroom feel in a basement
- Integrating wine storage as a functional and stylish feature
- Working around structural elements when opening the staircase and wine area

## CLIENT QUOTE

“We hired \_\_\_\_\_ to do an extensive remodel on our home including a full basement finish, three bathrooms, kitchen update, and main living update. **The result was beyond our expectations**; we love it! For our next project, we will definitely hire \_\_\_\_\_ and recommend them wholeheartedly. From start to finish, \_\_\_\_\_ acted with **professionalism**. \_\_\_\_\_ (owners) are lovely to work with, and \_\_\_\_\_ helped us through the design and selection process. They have a well-organized pre-construction planning process that ensures that when the job begins everything runs smoothly. Our remodel project started and completed to the schedule we were given. All of sub-contractors were experts in their trades and did beautiful work on our home. Each day, \_\_\_\_\_ makes sure it's a safe and clean work site. I always felt comfortable with workers in my home and was so impressed by \_\_\_\_\_ prompt follow through and **clear communication**. Investing in updating our home of 19 years was a big decision, and I couldn't be happier that we found \_\_\_\_\_ to partner with on the project..”



CONSTRUCTION PHOTOS



The Lower Level Luxe – 2025 ROTY AWARDS – Basement Over \$250,000