

# Countryside Collective

NARI MINNESOTA - 2025 ROTY AWARDS





# Before, During & After





# Project Overview

**Project:** Countryside Collective

**Category:** Residential Landscape Design / Outdoor Living Over \$250K

The Countryside Collective project transformed an empty backyard into a luxurious retreat, centered around a swim-up bar inspired pool and custom water features. A sunken pool house, hot tub, and bubbling rock elements create a layered, immersive experience, complemented by a cozy fire and lounge area. Turf squares add playful texture, while porcelain pool decking stays cool underfoot. Strategically placed aspen trees and other plantings provide visual interest in every season. This design balances elegance, entertainment, and relaxation, creating an outdoor space that is both functional and stunning—a backyard oasis perfect for gathering, unwinding, and enjoying the countryside.

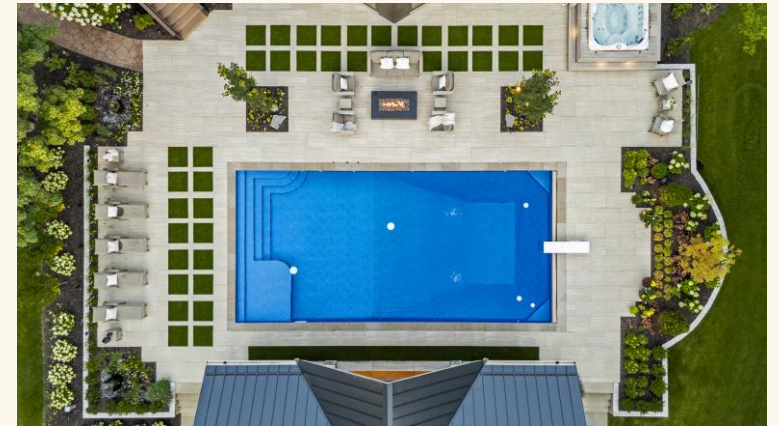


Countryside Collective  
Residential Landscape Design / Outdoor Living Over \$250K



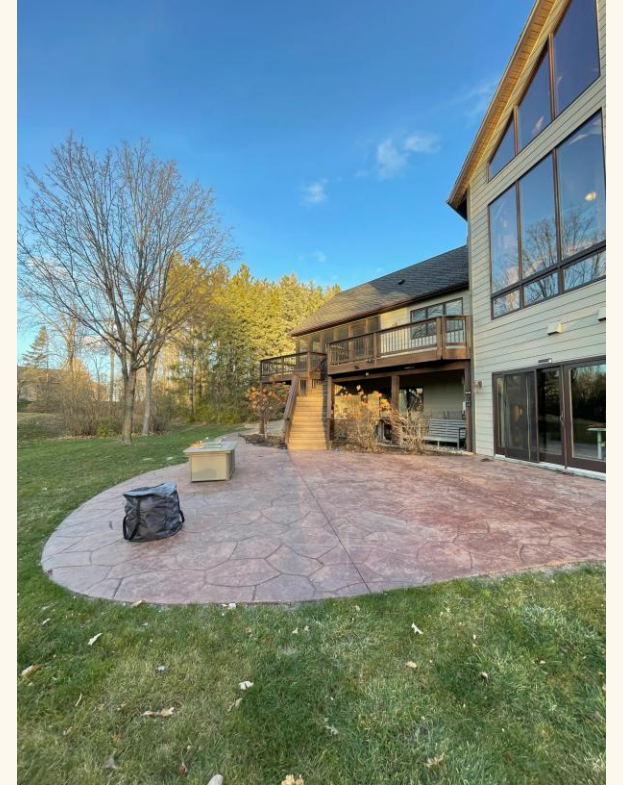
# Client Needs & Wants

- Wanted a pool again, having had one at their previous home
- Desired a streamlined indoor-outdoor flow for spending time outside
- Needed shelter from the sun to extend outdoor enjoyment
- A hot tub
- Sought a backyard space for entertaining and family hangouts
- Was open to consulting on home exterior updates (siding color)





## Before Photos



Countryside Collective  
Residential Landscape Design / Outdoor Living Over \$250K



# Rendering



Countryside Collective  
Residential Landscape Design / Outdoor Living Over \$250K



# Functionality

- Pool house automated screen controls with mosquito and weather protection were essential for comfort and usability
- Sunken pool house designed to feel like a swim-up bar, enhancing the entertaining experience
- Pool serves as the centerpiece for gatherings, ideal for entertaining guests
- Sunken hot tub provides easy access
- Fire and water features add seasonal ambiance, especially in the fall
- Architectural lighting highlights key spaces while remaining low-maintenance and functional





# Aesthetics

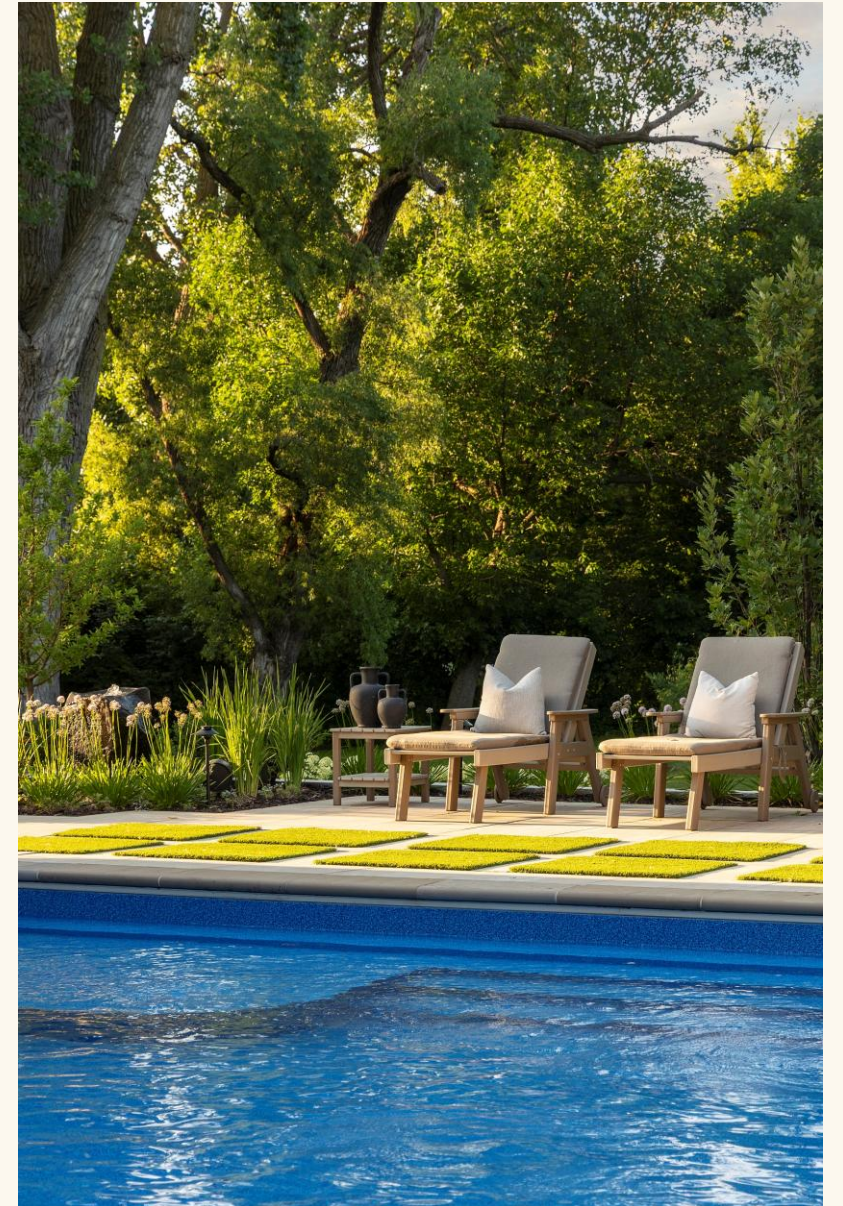
- Hot tub deck enhances visual appeal and creates a polished look
- Views from the house were designed to evoke a luxurious, resort-like feel
- Water features add movement, sound, and focal interest
- Turf introduces texture, visual interest, and low-maintenance
- Aspen trees provide vertical height, seasonal foliage, subtle shade, and human-scale interest without blocking views
- Plantings like boxwood, evergreens, and allium ensure year-round color, form, and structure
- Design emphasizes visual form and appeal even outside the lush summer months, maintaining beauty in every season





# Craftsmanship/Innovation

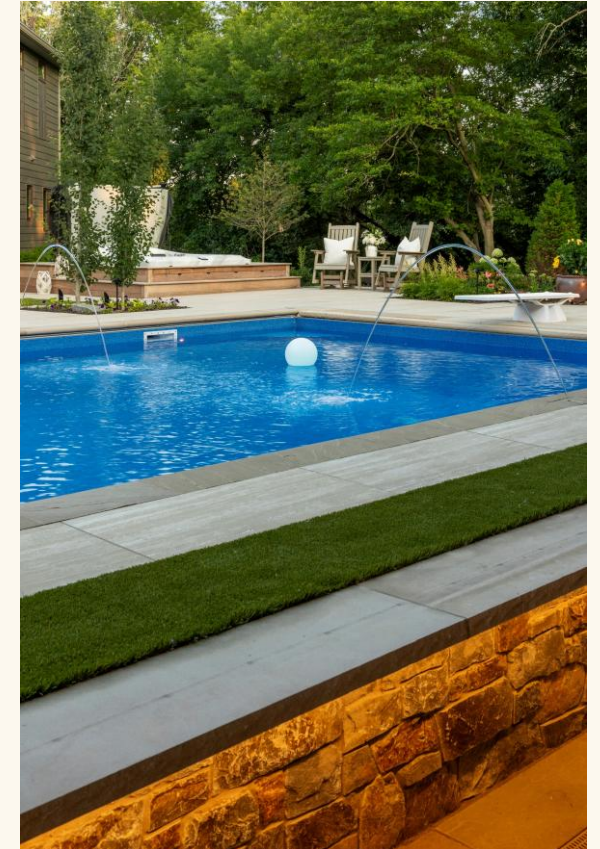
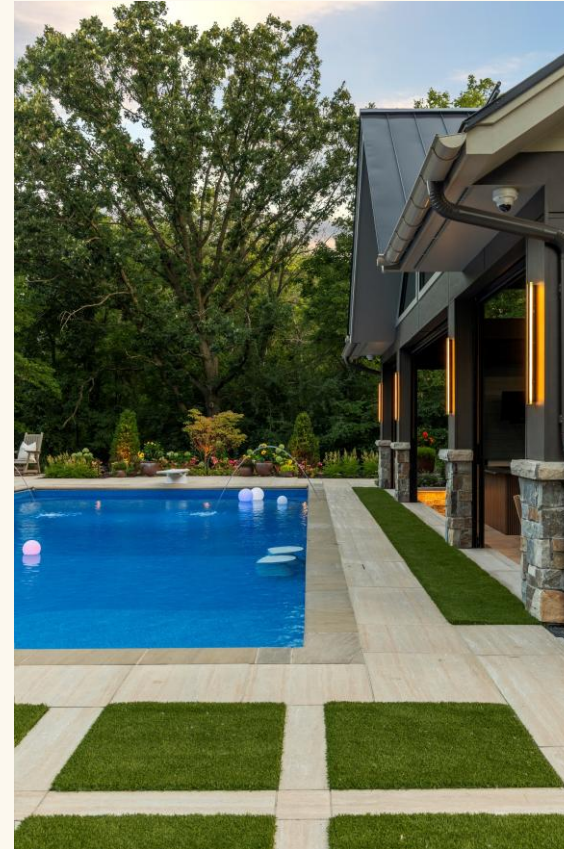
- Plastic tile was installed under the turf, ensuring a secure, level surface while maintaining durability and low maintenance
- Large-format European-style porcelain tile was selected for its sleek, modern aesthetic, exceptional durability, and luxurious feel, showcasing meticulous attention to detail and high-end craftsmanship. Its installation reflects precision and expertise, creating a surface that is both visually stunning and built to withstand years of use





# Project Challenges

- Porcelain tile installation was challenging because of how large each tile was. Precision grading was necessary to ensure that the tiles didn't wobble or move
- The vinyl pool had to be installed at the perfect distance from the foundation of the pool house to preserve the integrity of the structure but also had to be close enough to give that swim-up feel. The design of this was challenging but turned out stunning!
- Managing water runoff was tricky, but the site's natural slope away from the house allowed for effective drainage solutions without compromising design or function













# Countryside Collective

## NARI MINNESOTA - 2025 ROTY AWARDS

