



# Coastal Retreat

2025 NARI ROTY AWARDS

*Category: Residential Kitchen Over \$200K*



# Project Statement

## *Coastal Redesign*

This Crystal Lake kitchen was reimagined to allow the homeowners to continue enjoying lakeside living with a brighter, more functional space. They loved their location but wanted the kitchen to better reflect a light, coastal-inspired aesthetic while improving its everyday usability.

Initially, the goal was a simple refresh, keeping the existing perimeter cabinetry and replacing only the island. However, the vision of creating a bright, welcoming kitchen led to a full redesign with all-new cabinetry and a reimagined layout. This allowed for improved flow and a cohesive design that eliminated the heavy “orange” tones of the original maple woodwork, replacing them with finishes that feel airy and timeless.

The transformation delivers both functionality and craftsmanship. White painted perimeter cabinets pair with a warm white oak–stained island and buffet for contrast. Cambria MontaaJ Satin quartz adds subtle movement and durability, while the oak flooring grounds the space with coastal character. Updated lighting and fresh paint complete the look, creating a bright, inviting centerpiece for family and guests.

The result is a cohesive, light-filled kitchen blending style, function, and enduring craftsmanship.





# Client Objectives & Before Plan

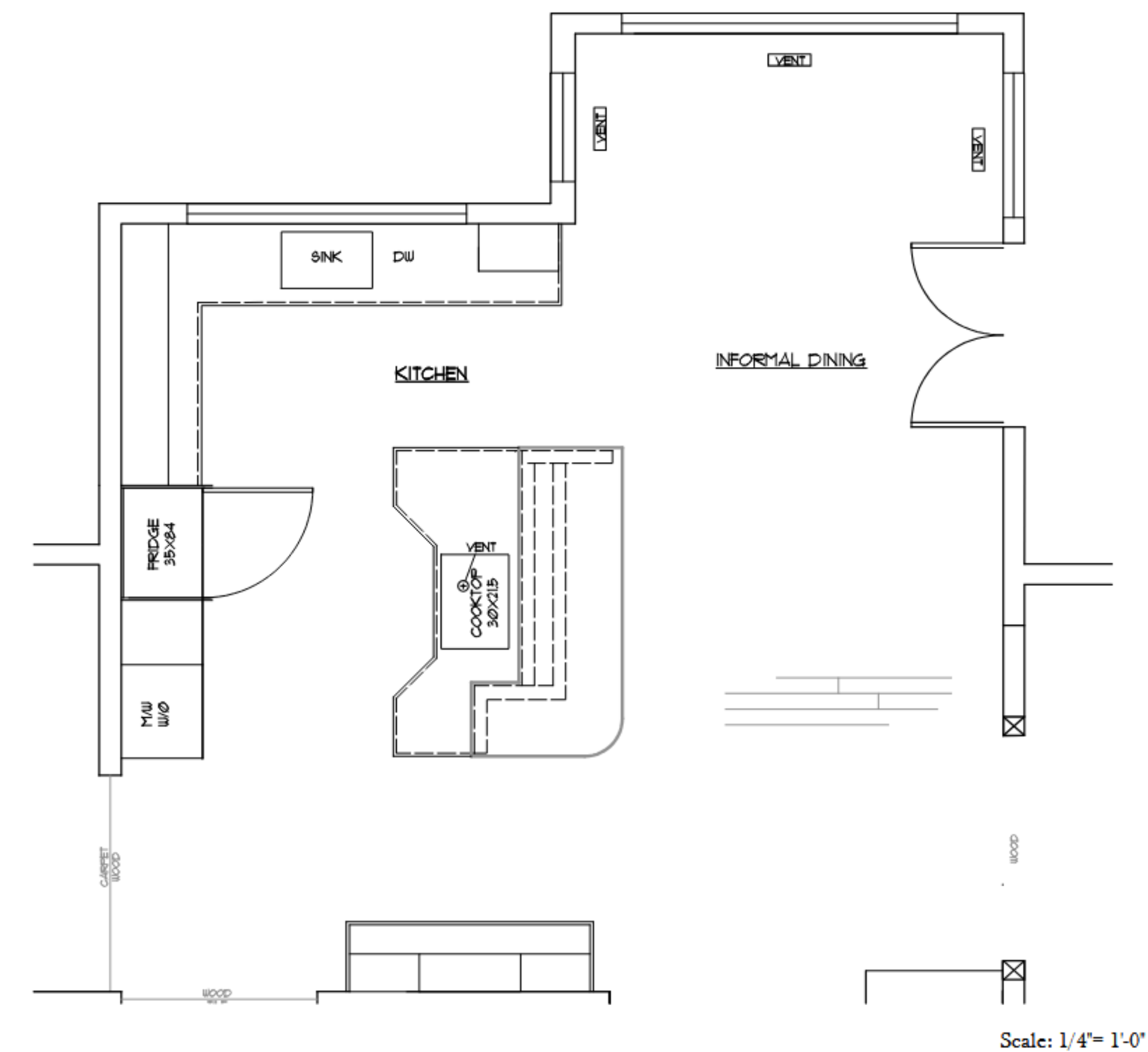
## *Refresh and Rework*

The homeowners’ primary objective was to breathe new life into their kitchen by introducing more light and eliminating the overwhelming “orange” tone of the maple woodwork.

They envisioned a brighter, airy atmosphere with a relaxed coastal influence, inviting and comfortable for both family living and entertaining guests.

While the initial plan focused on a simple kitchen refresh, the project ultimately evolved into a full redesign featuring all-new cabinetry.

This approach allowed for a cohesive transformation that aligned perfectly with their vision, resulting in a space that feels both timeless and welcoming.





# Client Frustrations

## *Refresh and Rework*





# After Plan

## Challenges Addressed

### FLOOR TRUSS MODIFICATIONS

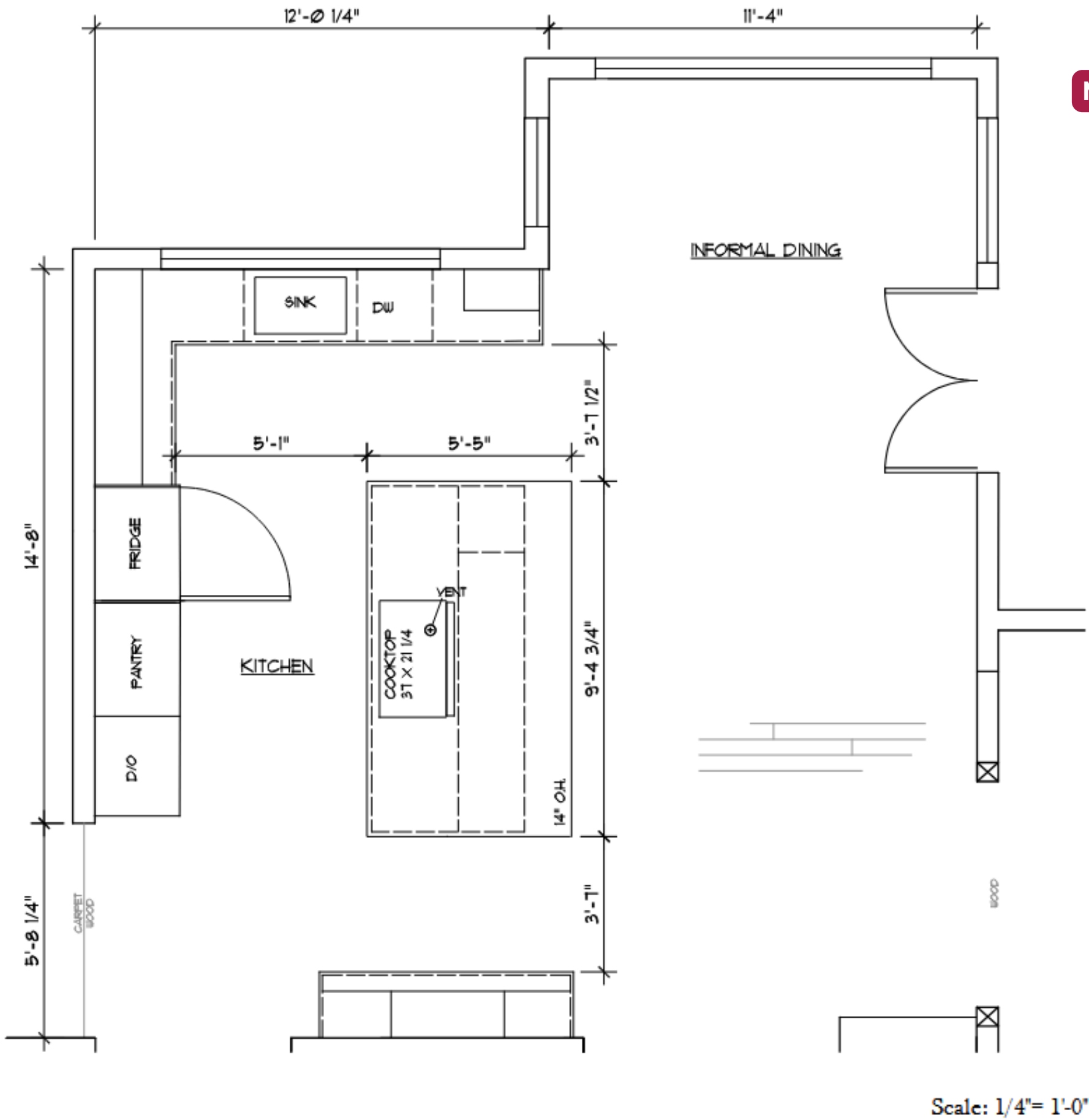
During construction, it became clear that floor trusses would need to be adjusted to accommodate the design vision and mechanical requirements. The team worked closely with structural engineers to make the necessary modifications without compromising the integrity of the structure.

### DARK INTERIOR FEEL

The home originally felt closed-in and lacked natural light, creating a heavy atmosphere. Strategic design updates enhanced the sense of openness and introduced more light through thoughtful finish selections, layered lighting design, and refined layout improvements

### CABINET DILEMMA

Initially, the clients hoped to keep the existing perimeter kitchen cabinetry and replace only the island. After careful evaluation, a full cabinetry replacement was recommended. The existing cabinets lacked the level of craftsmanship needed and would have diminished the overall outcome. Opting for a complete upgrade ultimately elevated the space both aesthetically and functionally.



### MILLWORK ADJUSTMENTS

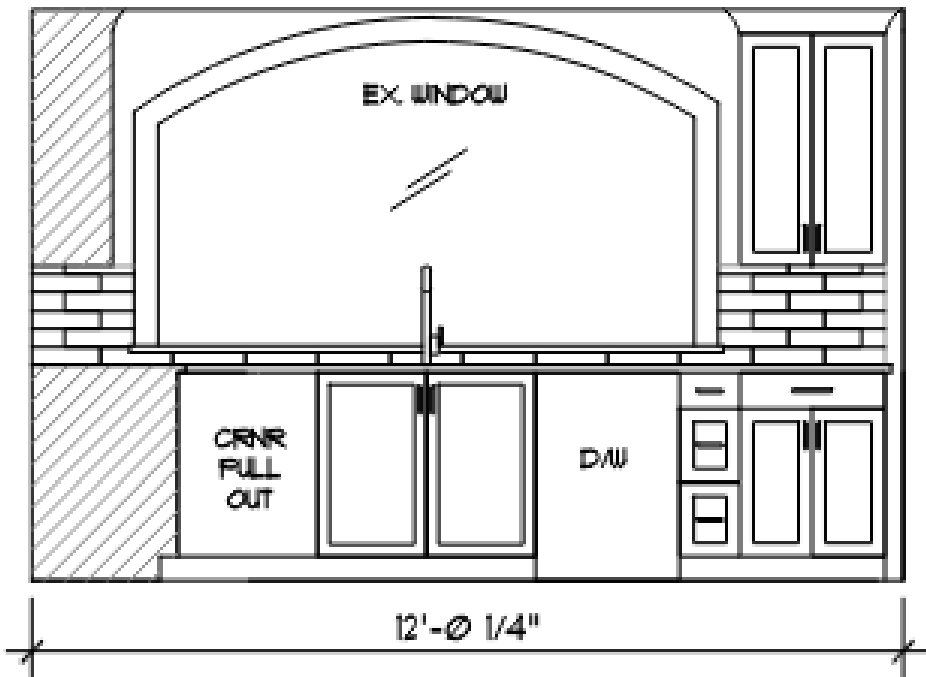
Several areas of existing millwork did not meet the quality standards, and integrating new elements required extra effort. The millwork was reworked and refined to ensure seamless transitions and a consistent level of craftsmanship throughout the home.

### INDUCTION VENTING

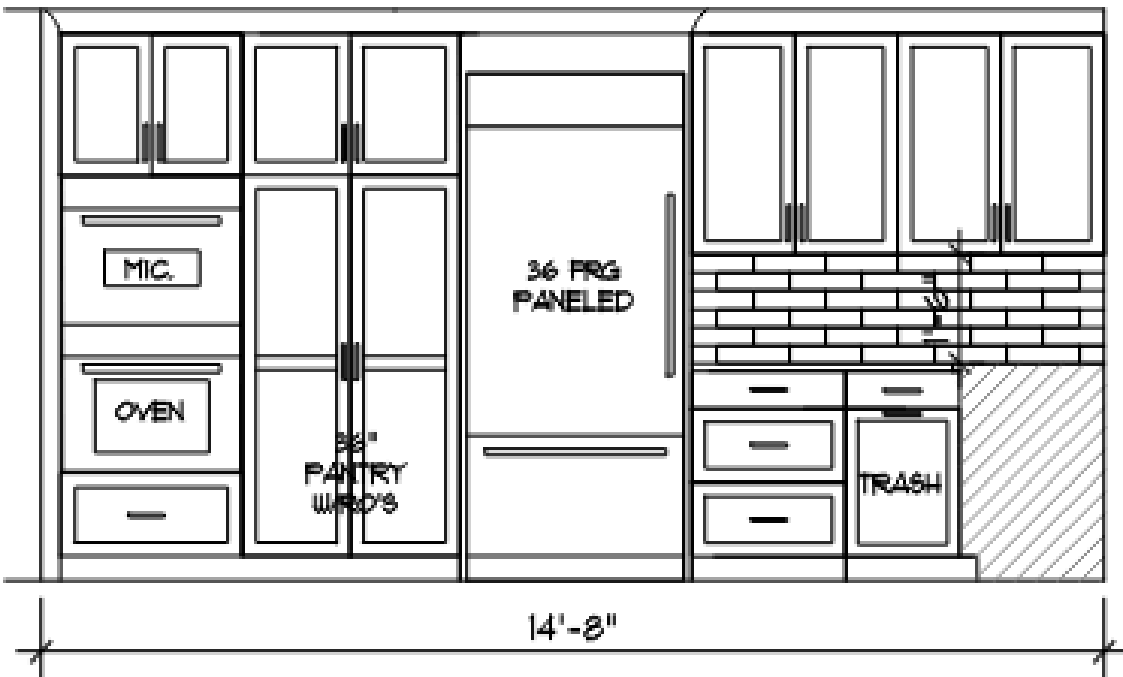
The clients selected a downdraft vent for their new induction cooktop, which posed venting challenges due to code restrictions and the layout of the home. The design team developed a creative solution to reroute the venting in a way that both met code and preserved the clean lines of the cabinetry and flooring.



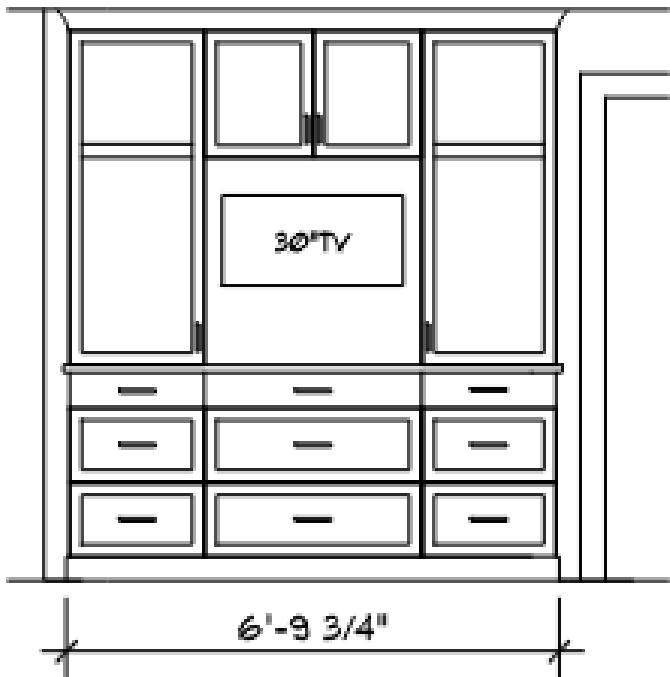
# Elevation Details



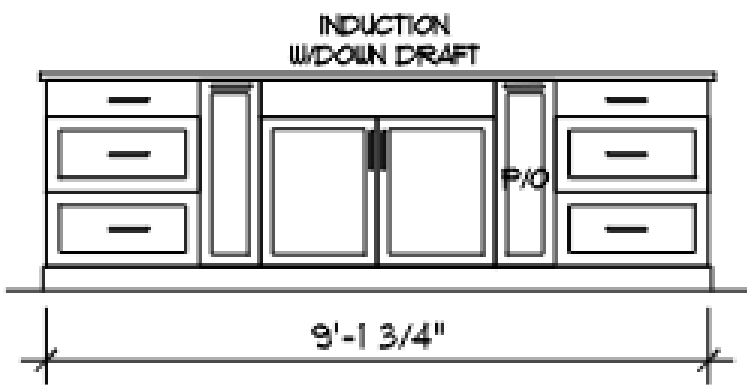
SINK WALL



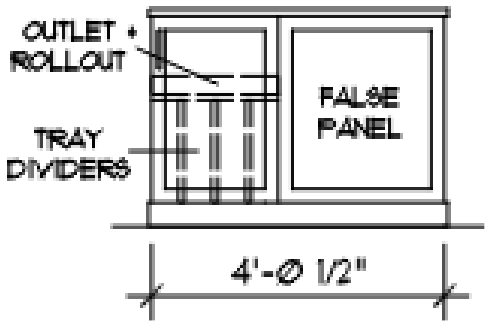
FRIDGE WALL



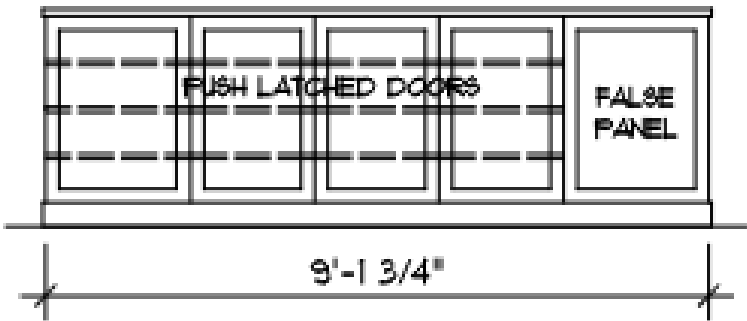
HUTCH WALL



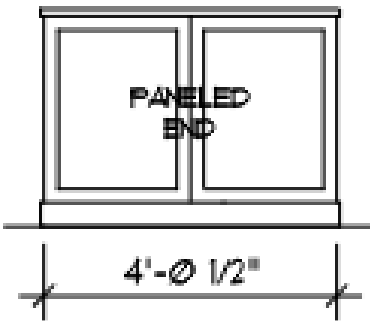
ISLAND



ISLAND LEFT SIDE



ISLAND BACK



ISLAND RIGHT SIDE

Scale: 1/4" = 1'-0"



# The Transformation

## *From Tired to Timeless*

The redesigned kitchen gives the homeowners the clutter-free space they wanted, with thoughtful storage solutions throughout.

The result is a bright, welcoming kitchen with new cabinetry throughout and a reimagined layout that allows for improved flow and a cohesive design.





# Innovation & Craftsmanship

## *The Details*

### CRAFTSMANSHIP

A durable Cambria quartz sill by the sink not only prevents water damage but also enhances the space with its refined aesthetic.



### CRAFTSMANSHIP

Beyond the updated finish, the cabinetry showcases elevated craftsmanship and custom detailing that highlight both function and artistry.



### INNOVATION

Smart storage solutions keep the kitchen clutter-free. The island houses a hidden toaster drawer, a concealed coffee station, and spice and oil pullouts by the cooktop, all adding efficiency and function. Nearby, a new white oak buffet, designed to match the island, creates a tidy drop zone that keeps daily essentials neatly organized and out of sight.



# Functionality

## *Island Living*

The white oak-stained island, topped with durable Cambria Montaj Satin quartz, was reimagined as a generous, single-level rectangle that houses the induction cooktop while doubling as a functional workspace and welcoming hub for gatherings.

This streamlined design enhances efficiency for everyday cooking, offers ample seating and prep space, and creates the perfect setting for extended family visits or effortless entertaining.





# Aesthetics

## Coastal Vibe

The kitchen's aesthetic strikes a balance between relaxed elegance and modern livability. Soft, neutral tones and natural textures evoke a breezy lakeside feel, while clean-lined cabinetry and refined details add sophistication. Subtle contrasts, like the white oak island against the crisp white perimeter cabinets, introduce warmth without overwhelming the space. Light flows easily across the satin quartz surfaces and hardwood floors, highlighting the layered materials and thoughtful composition.

The overall effect is a harmonious blend of comfort and style, creating a kitchen that feels both elevated and effortlessly inviting.



Before

The kitchen millwork was transformed from orange-hued maple to a crisp painted white, bringing a fresh, timeless look to the space.



Pendant lights above the island complement the recessed lighting, together providing balanced illumination.

After



