



Quartzite Muse

2025 NARI ROTY AWARDS

Category: Residential Kitchen Over \$200K

Project Statement

Heart of the Home

After two decades, the homeowners of this beautifully remodeled Lakeville kitchen were ready to breathe new life into their space. They debated between making small aesthetic updates or going all-in on a full kitchen remodel.

In the end, they opted for a complete transformation, creating a kitchen that now extends to soaring 10-foot ceilings with custom natural cherry cabinetry that complements the home's original cherry woodwork.

Quartzite countertops with ocean-blue veining, a herringbone backsplash, and reeded details bring elegance and texture. A charcoal-painted island and beverage station add contrast, completing a warm, sophisticated space that blends beauty with everyday practicality.

A redesigned layout improves flow and function, featuring an expanded island with ample prep space, an integrated sink, and seating for five beneath sculptural glass pendants.

The result is a stunning, re-imagined kitchen that not only elevates daily living but invites connection, comfort, and style throughout the home. It balances beauty with everyday function!



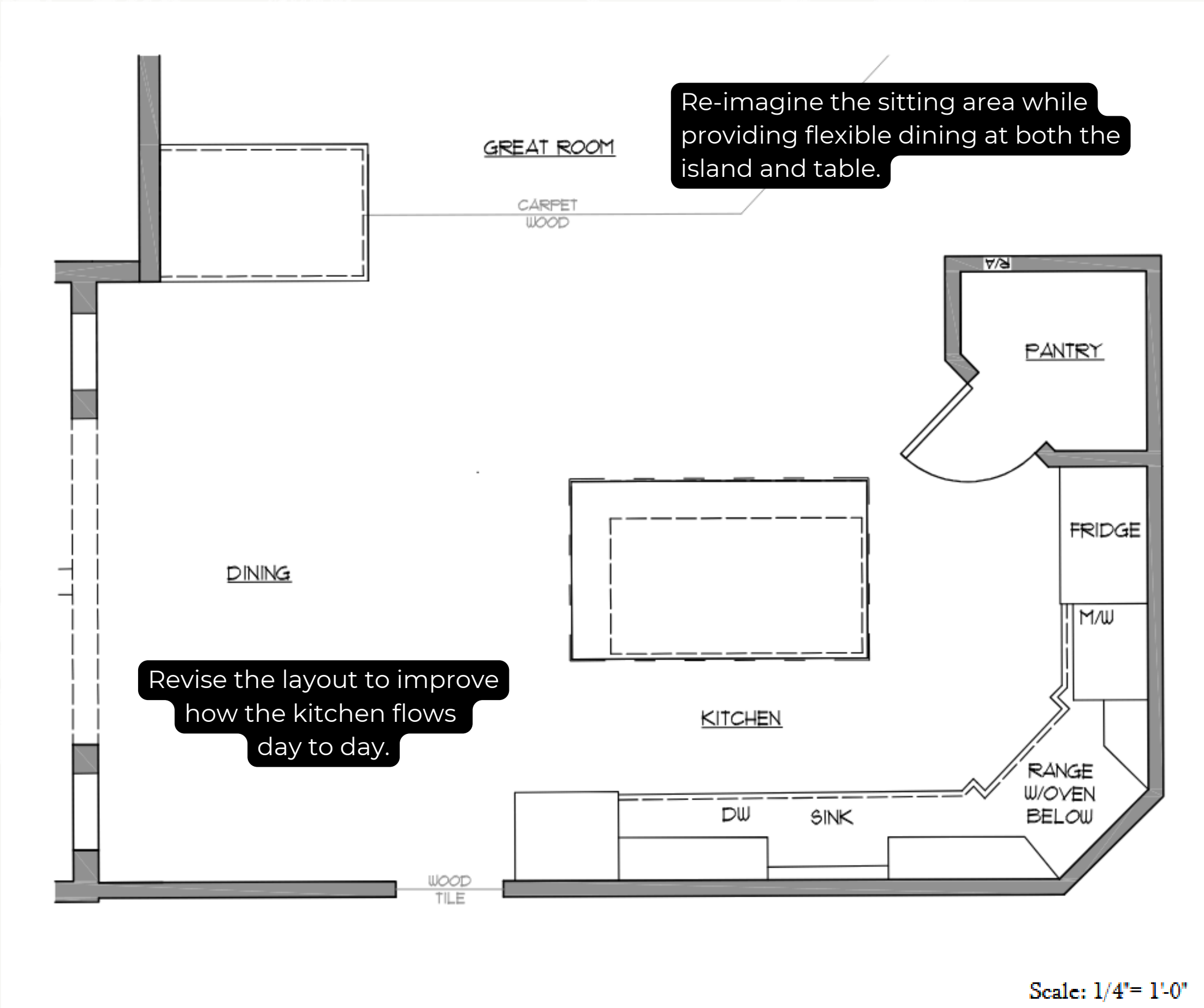
Client Objectives

Breathe New Life

The homeowners approached the design team with clear goals for their remodel: refresh the aesthetics, improve the overall flow, and create a warm, inviting atmosphere that seamlessly blended the home's existing natural cherry woodwork with the new space.

They wanted to integrate modern appliances and amenities to enhance everyday functionality.

What began as a question of whether small updates would suffice quickly evolved into a decision to pursue a complete transformation.



Client Objectives

Update and Refine



After Plan

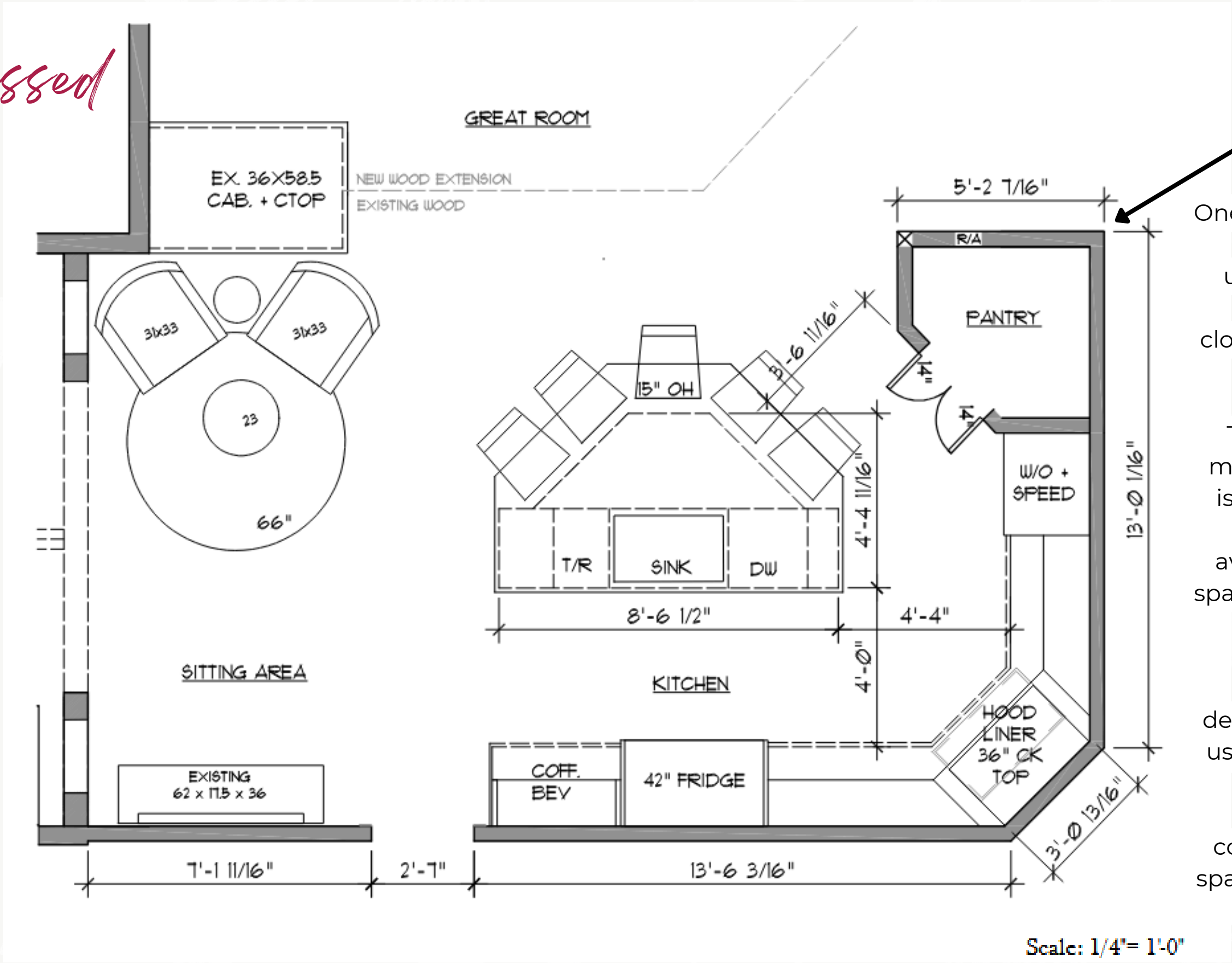
Challenges Addressed

CHALLENGE - LAYOUT

The challenge with the layout was making the footprint work for the family. A blend of existing and new appliances allowed the design team to re-imagine the layout for improved flow and functionality, including incorporating a casual seating area just off the island.

CHALLENGE - FINDING AND CONNECTING THE SPACES

To expand the feel of the space, the team needed to think outside the box, or in this case, outside the room. By relocating the dining table to the sunroom and extending the gorgeous Australian Wormy Chestnut flooring into the great room, the entire main level feels more open and connected.



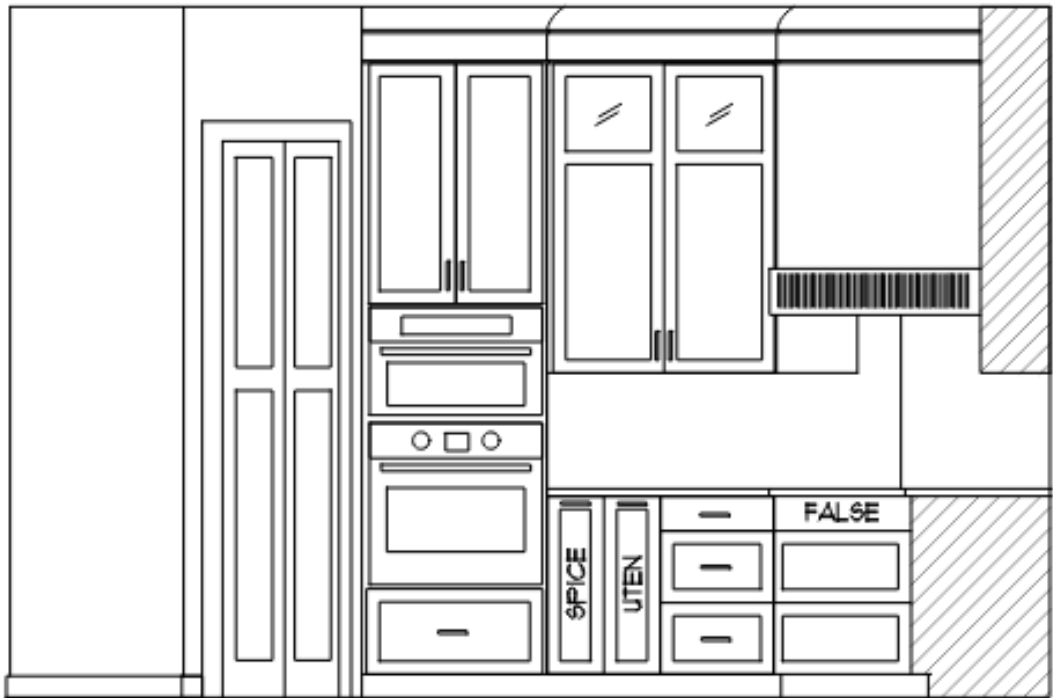
INNOVATION = PANTRY STRUCTURE

One of the biggest challenges in the remodel was uncovering structural posts hidden within the pantry closet walls, which meant the pantry had to stay.

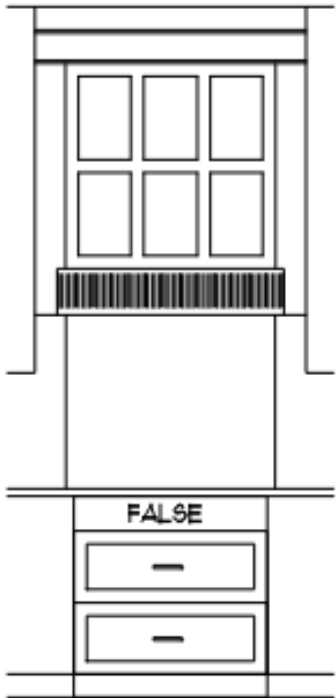
This unexpected constraint made designing a functional island layout more complex, as the floor plan needed to avoid awkward or inefficient space while still establishing a central focal point.

In the end, the team designed an expansive island using a unique shape to take advantage of the space. It features a spacious countertop with ample prep space, an integrated sink, and generous seating for five.

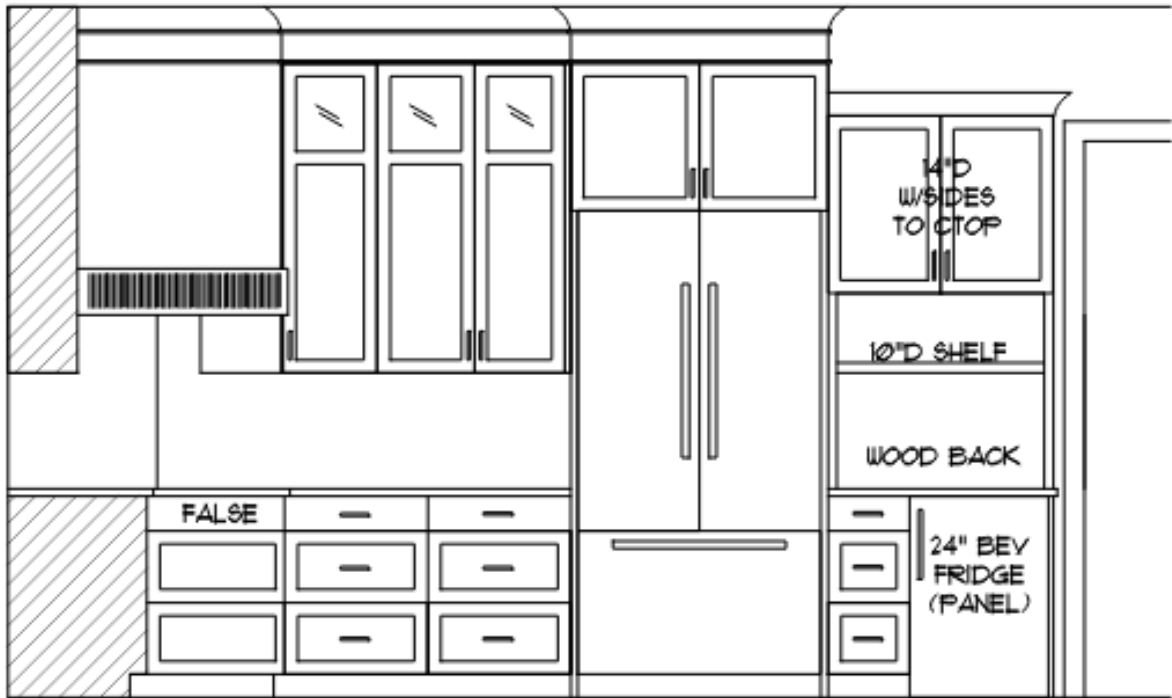
Elevation Details



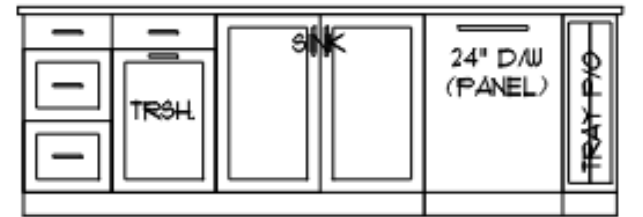
5'-11 3/16"
PANTRY WALL



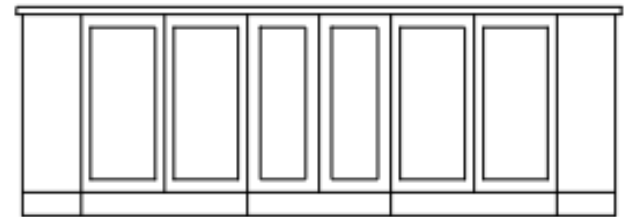
2'-9 1/2"
ANGLED WALL



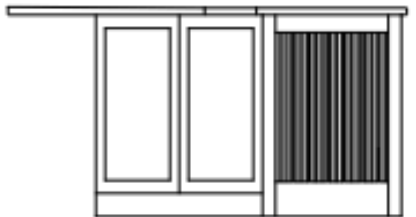
11'-0 15/16"
FRIDGE WALL



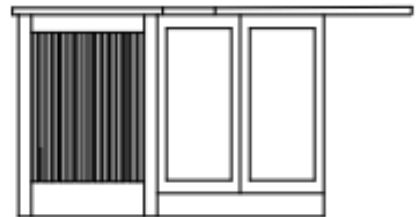
8'-6 1/2"
ISLAND



8'-6 1/2"
ISLAND BACK



4'-4 3/4"
ISLAND SIDES



Scale: 1/4"= 1'-0"

Functionality

Layout, Reimagined

FUNCTION

A blend of existing and new appliances allowed the design team to reimagine the layout for improved flow and functionality, including a casual seating area just off the island.

Natural cherry cabinetry, including an angled pantry, wraps the kitchen perimeter and extends to the 10-foot ceilings, offering generous storage for both daily essentials and occasional-use items.

The redesigned island, anchored by cascading translucent glass pendants, now features an expansive countertop with ample prep space, an integrated sink, and generous seating for five.



FUNCTION

A charming beverage station offers a dedicated spot for morning coffee and grab-and-go drinks, with coffee maker, beverage fridge, open shelving and built-in storage.

FUNCTION

Soft gray upholstered stools add comfort and modern simplicity, making this space ideal for everything from quiet mornings to casual entertaining.

After

Craftsmanship & Innovation

Gather & Refresh

CRAFTSMANSHIP

The custom-built natural cherry cabinetry blends seamlessly with the home's original woodwork.

A show-stopping herringbone backsplash adds a layer of visual interest, introducing refined pattern and dimension.

Subtle reeded detailing on both the island and range hood brings in texture and depth.



Before



INNOVATION

An enhanced lighting plan considered every detail, layering illumination throughout the space.

INNOVATION

Upper cabinetry and toe-kick lighting provide subtle accents, while recessed fixtures and island pendants deliver both task and ambient light.

After

Aesthetics

Contrasting Palette

The refreshed space blends the natural warmth of wood with deeper, refined accents, creating a heart of the home that feels welcoming and comfortable while remaining stylish and practical for everyday living.

AESTHETIC

Striking quartzite countertops, defined by dramatic ocean-blue veining, immediately catch the eye and serve as the centerpiece of the kitchen.



AESTHETIC

Painted in a deep charcoal, the island base and beverage station provide bold contrast to the natural cherry cabinetry. This pairing strikes a perfect balance of warmth from the wood and a sophisticated edge from the darker tones.

