

2025 ROTY SUBMISSION

NARI MINNESOTA

OFFICE REMODEL

CATEGORY:

RESIDENTIAL INTERIOR FEATURE UNDER \$50,000



ABOUT THE PROJECT

Our clients built a beautiful new construction home, but their front room remained empty and lacked character. They wanted to make the extra space into a home office where they could both work that felt as lovely as the rest of the home.

Because the homeowners needed a space where they could both work part-time, our goal was to build them a functional office with two workstations that would provide the space and storage for them to comfortably work together. They sought a timeless and cohesive design style to flow seamlessly from the aesthetic of the rest of their home.

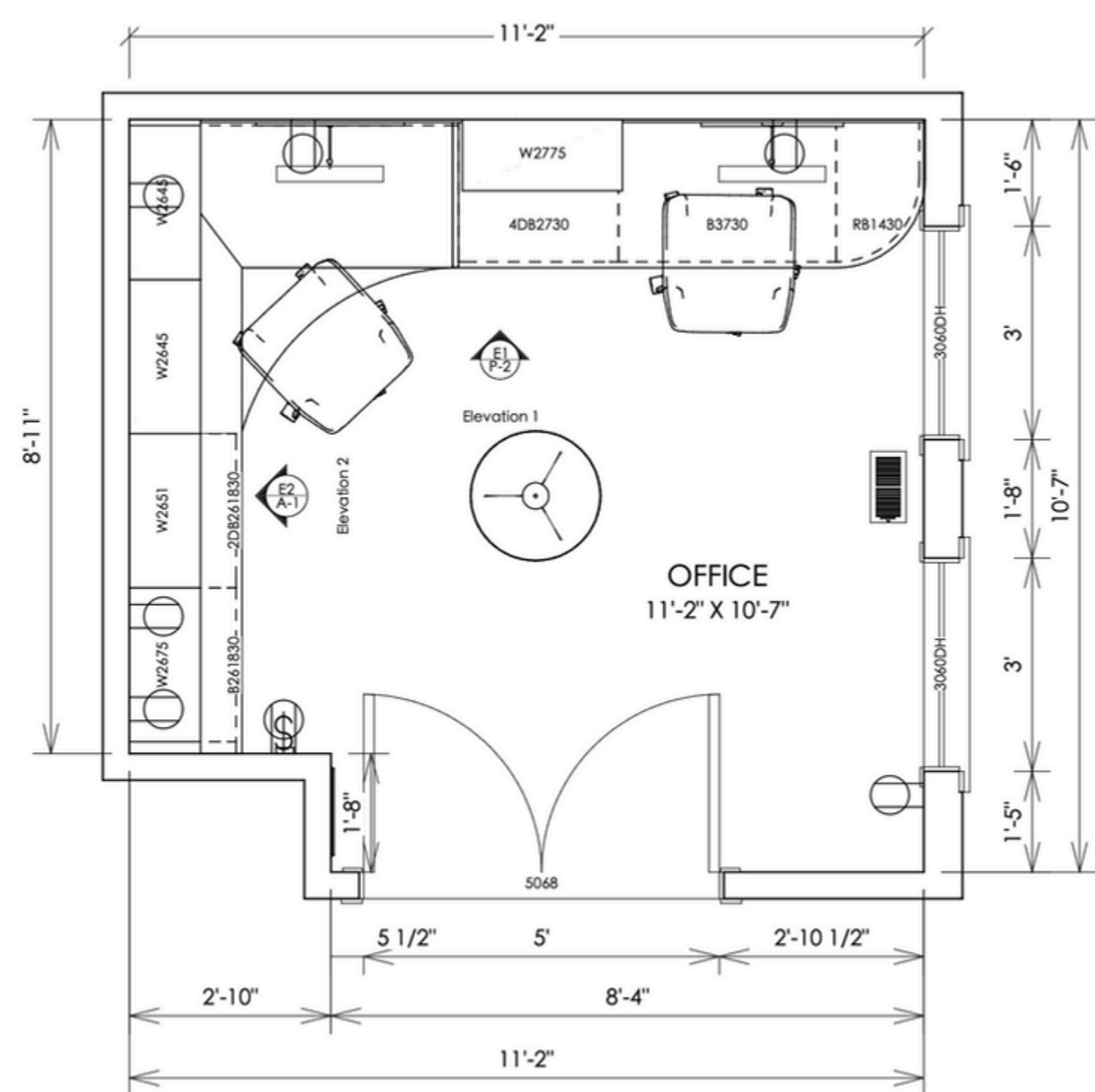
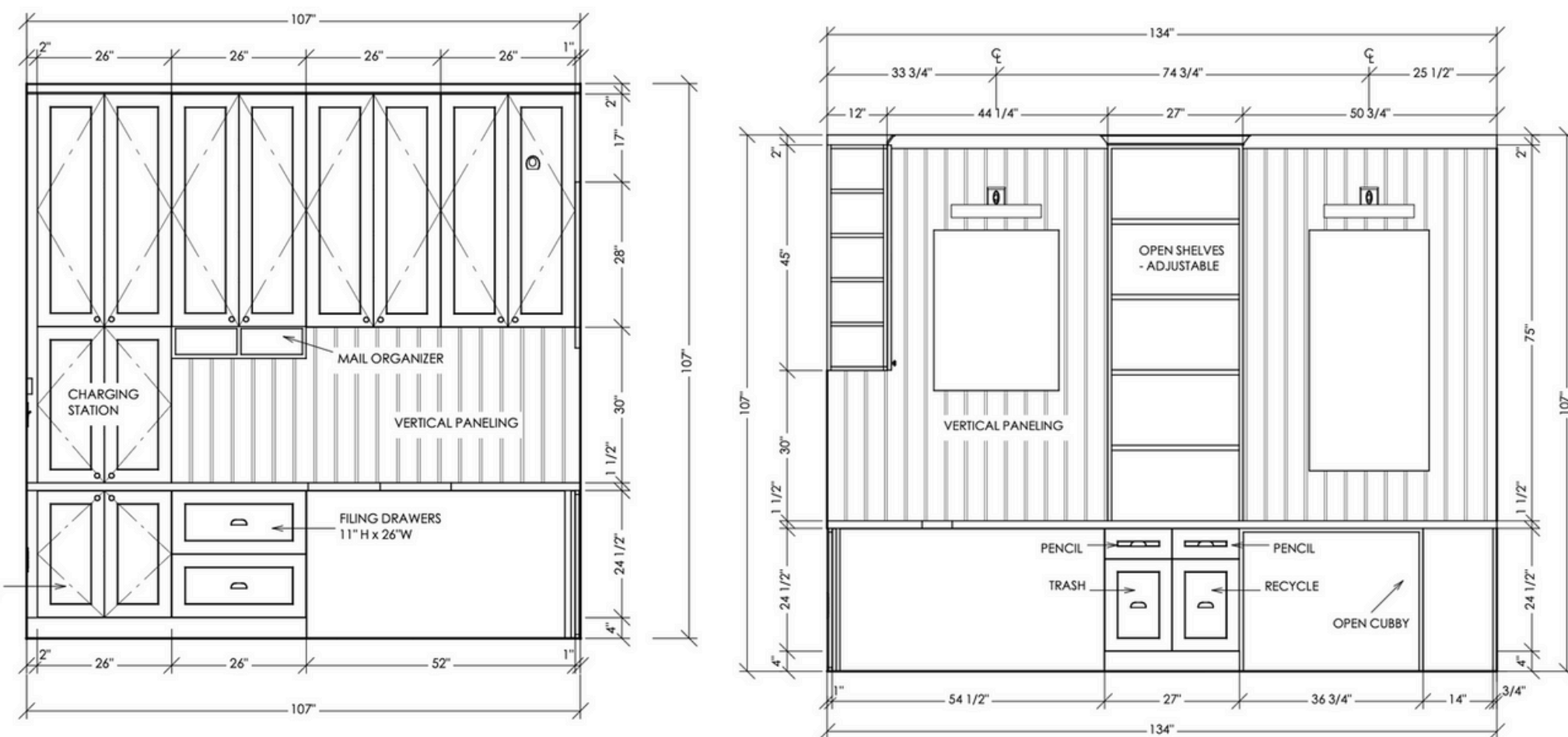


BEFORE



ELEVATIONS

Bringing the built-ins up to the ceiling allowed for ample closed storage in the office, while maintaining space within the room to comfortably open the French doors.

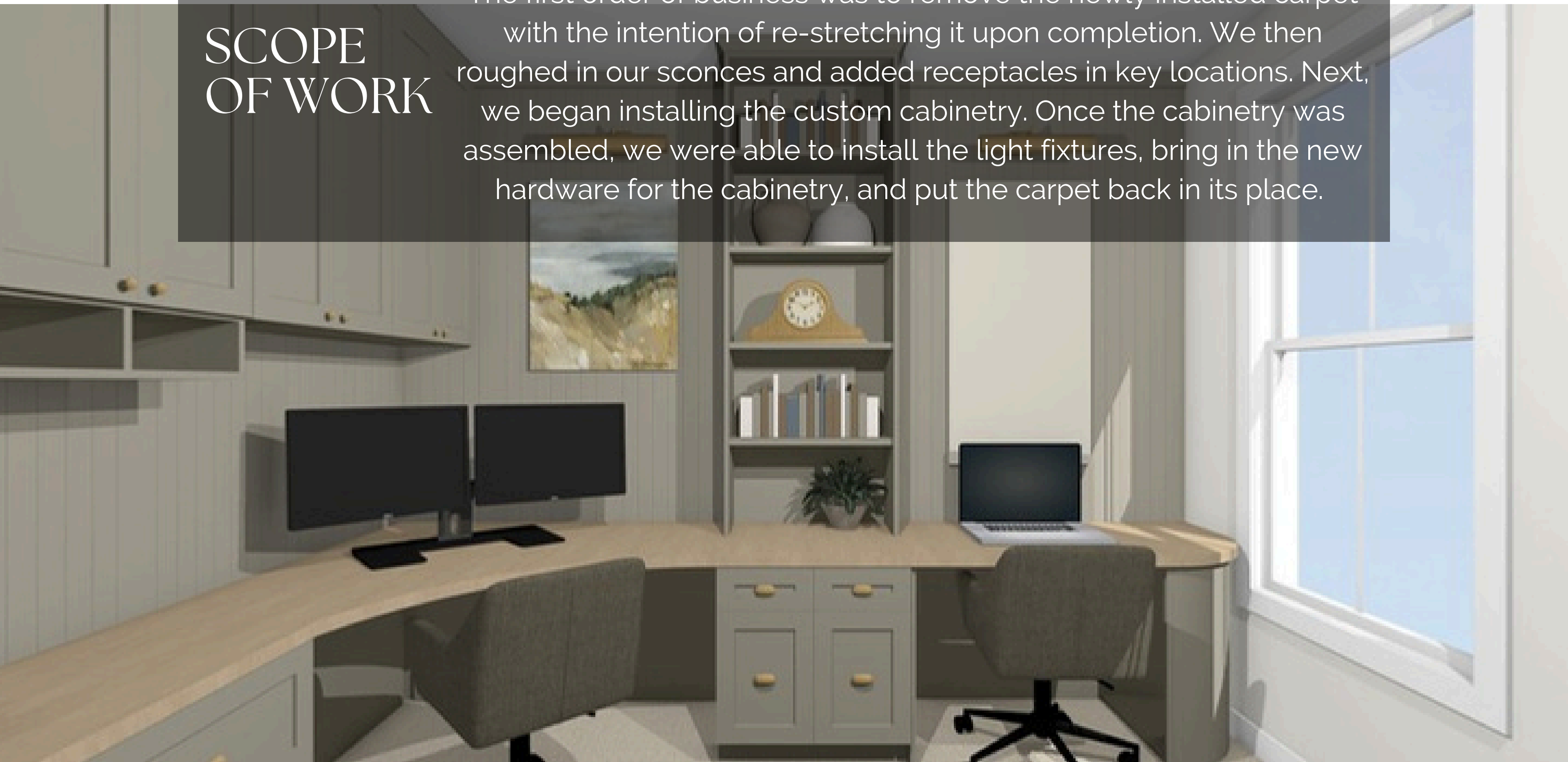


FLOORPLAN

The floor plan includes a curved desk that hugs the interior walls of this room, which also creates character. Using radius base cabinetry at the window allowed us the depth needed for the desk without interfering with the window casing.

SCOPE OF WORK

The first order of business was to remove the newly installed carpet with the intention of re-stretching it upon completion. We then roughed in our sconces and added receptacles in key locations. Next, we began installing the custom cabinetry. Once the cabinetry was assembled, we were able to install the light fixtures, bring in the new hardware for the cabinetry, and put the carpet back in its place.



PROGRESS
PHOTOS



PROGRESS
PHOTOS



PROGRESS
PHOTOS



Once the countertop was set, we could install the upper cabinets



Shiplap was installed around the upper cabinets

AFTER





FUNCTIONALITY

The closed storage hides any clutter and helps keep the space tidy. The integrated charging station allows devices to be put away so when the homeowners are done working, they can unplug, both figuratively and literally.



FUNCTIONALITY

The curved desk allowed for a bit more desktop space. We also added in a trash and recycling pullout next to the desk that helps our clients stay on task and focused by not having to leave the room.

Incorporating storage in the curved base was a way to optimize every bit of cabinetry space for this growing family. Adding more outlets for two monitors gives our clients the ability to work side-by-side with no one's battery being drained.



CRAFTSMANSHIP

Our favorite detail in this space was the curved desktop. It adds a soft touch to the space, while allowing us to maximize the desktop depth and maintain a beautiful finish.



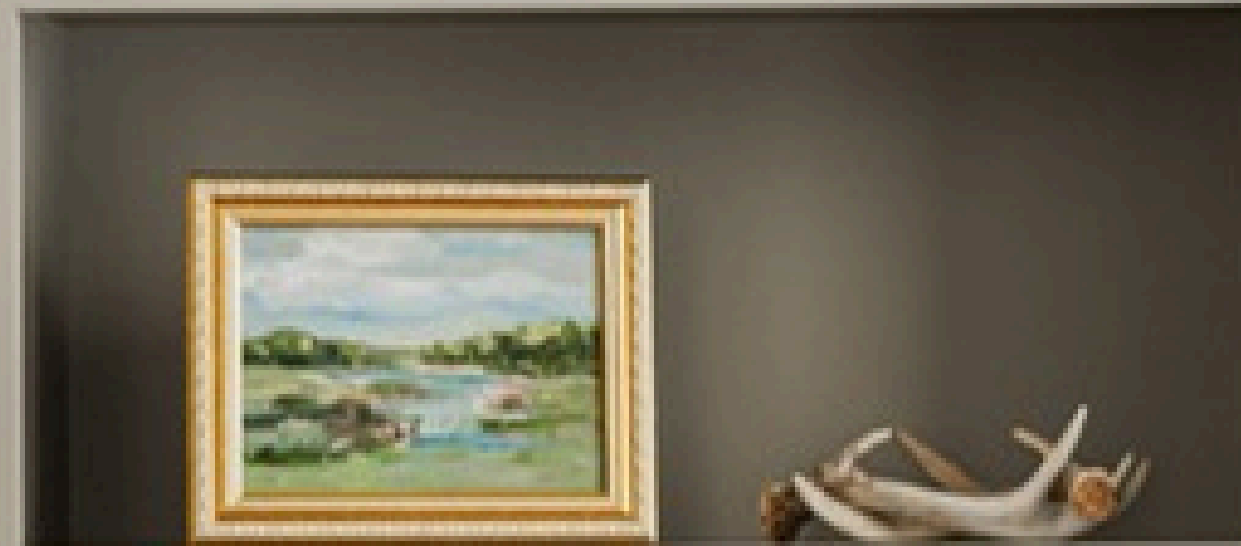
AESTHETIC

The creamy green color is timeless and feels both masculine and feminine, especially when paired with the gold hardware. Crown molding near the ceiling draws the eye up the shelving tower and gives a rich, finished look.



OBSTACLES

During the design, we knew we needed to splice the curved top for graining and due to the length. Additionally, we needed to add extra supports under the desk to stabilize the span of the desktop and prevent any bowing. The install needed to be perfect as the custom cabinetry was pre-finished, leaving no room for error.



BE NICE
TO PEOPLE

AFTER



DESIGN STYLE: TRANSITIONAL | RESIDENTIAL INTERIOR FEATURE UNDER \$50,000