

NARI MINNESOTA - 2025 RotY AWARDS

PROJECT: NIGHTCAP CATEGORY: RESIDENTIAL INTERIOR FEATURE UNDER 50K



Client Objectives

not your average home bar

We had the opportunity to work with our client, revising his already finished basement to transform an unused section into the perfect spot for a home bar. Goals for this project included:

- Visible as you come down the stairs, the bar area needed to feel exciting and unique.
- It needed to blend seamlessly with the existing flooring, trim, and overall aesthetic.
- It also needed to work within the existing dimensions without altering any walls.
- No extra flooring was available and the homeowner did not wish to replace it, so we needed to ensure that the existing flooring could be salvaged and reassembled.

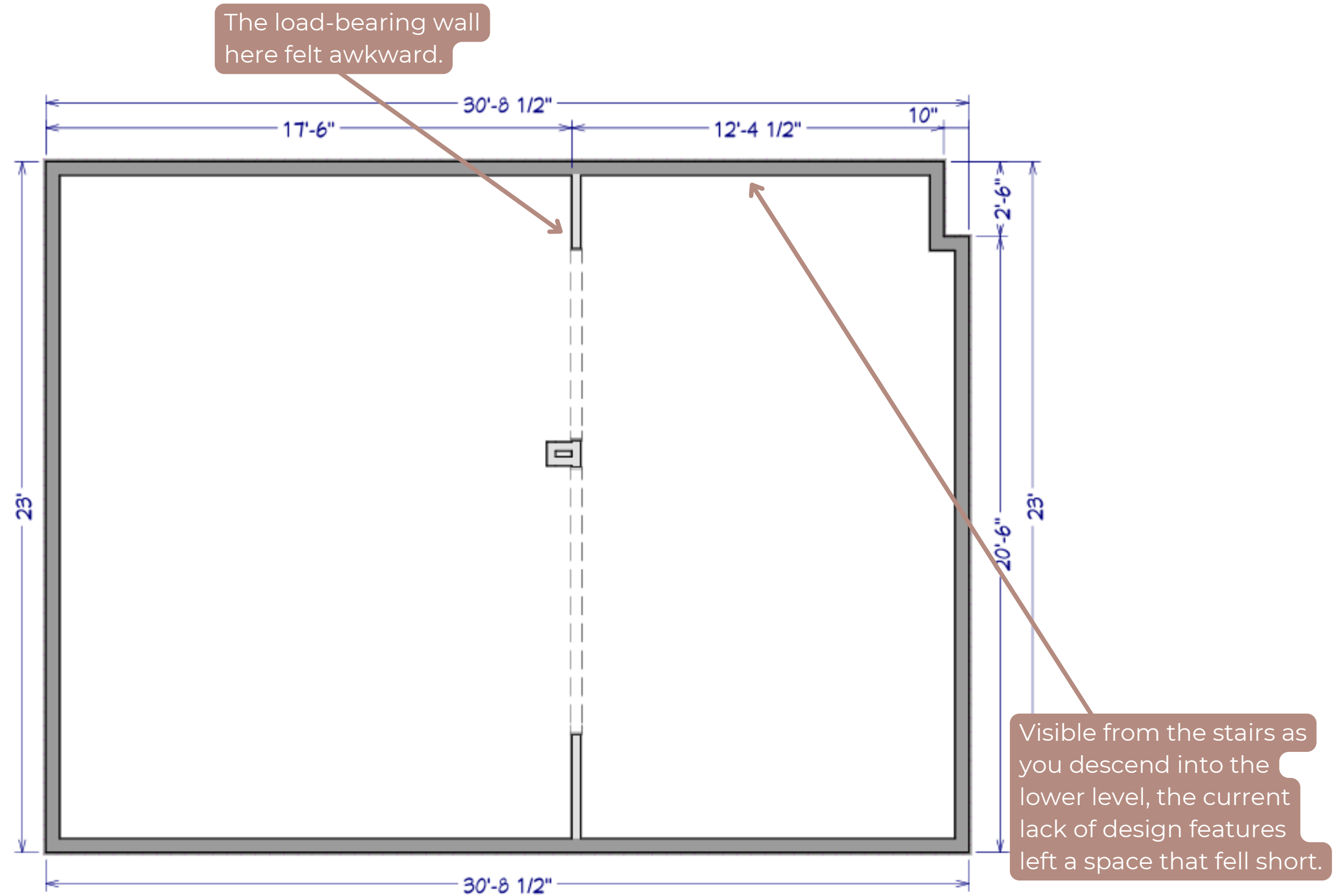


Client Frustrations

before plan

While this finished basement very much reflected our homeowners' style and taste, it wasn't set up for entertaining. The open floor plan, while spacious, felt cavernous and devoid of a wet bar that would help him better utilize the space when hosting friends and family.

While the homeowner's original vision was to transform his basement into an entertaining 'man-cave', the lack of a wet bar was a glaring omission in his original vision - one he wished to remedy.



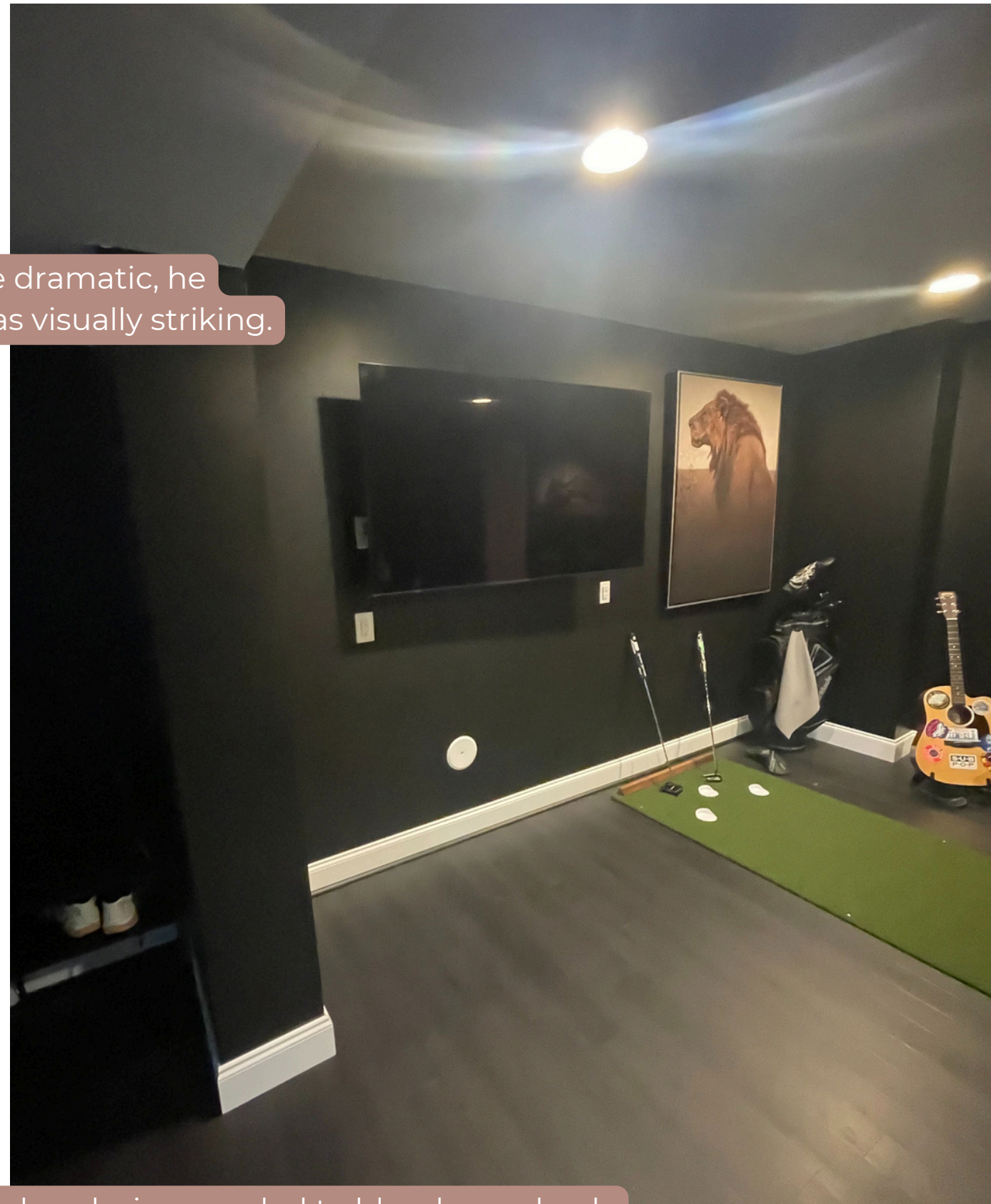
Client Wishes

*striking impact with
minimal disruptions*

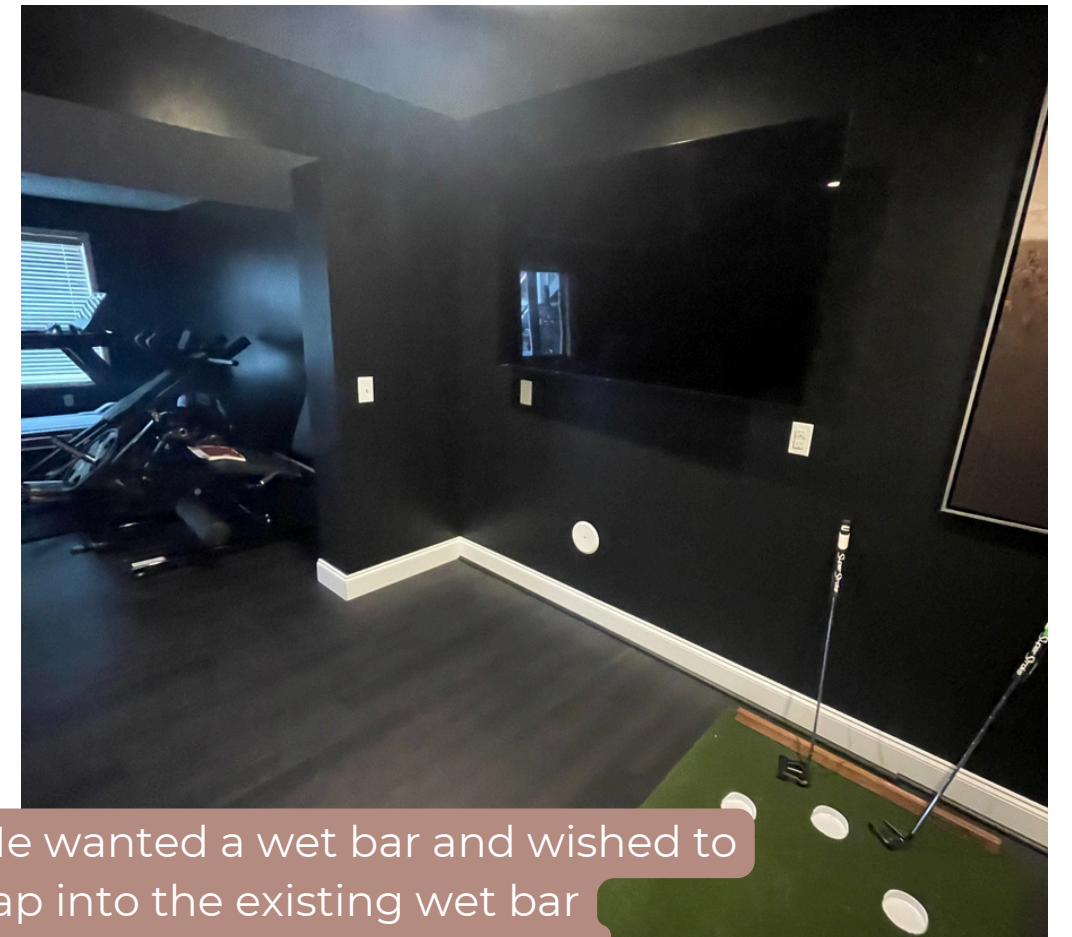
With a clear affection for the dramatic, he wanted a bar design that was visually striking.



The bar design needed to blend seamlessly with the existing aesthetic including the trim, wall color and flooring.



Our homeowner didn't want to alter any walls or make any other layout changes.

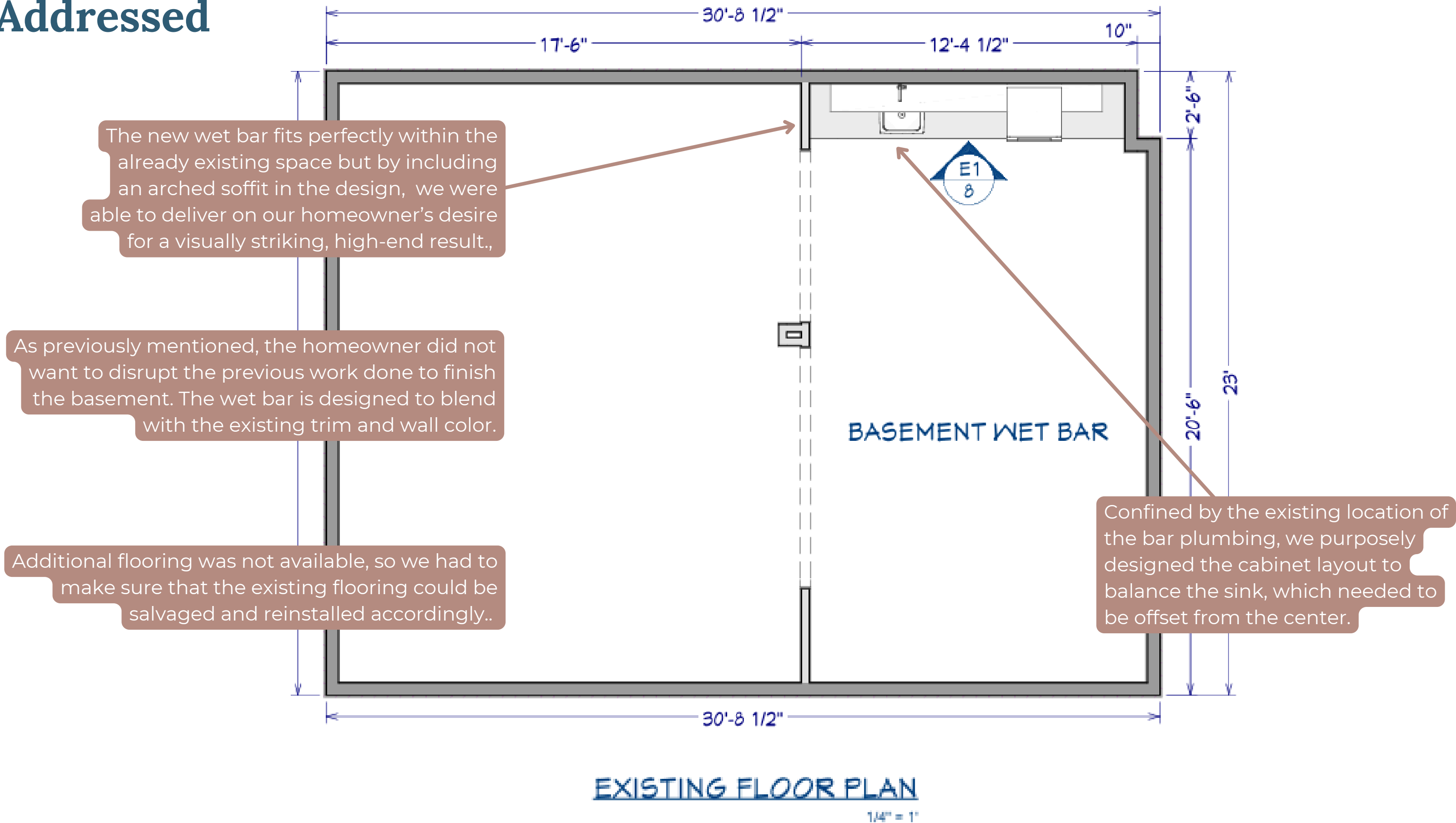


He wanted a wet bar and wished to tap into the existing wet bar plumbing without moving it.



Challenges Addressed

after plan



Functionality

entertaining ready

This wet bar is ready to make a splash! Plenty of cabinetry, a sink, a beverage fridge and a stunning display shelf stand ready for everything from a casual night with a few friends to a big game night bash. Extra-deep drawers for storing long stemware are a must, as is the included pull-out trash drawer. The display shelf stands out, serving as both a focal point above and providing task lighting below.



Before



After

Craftsmanship & Innovation

the perfect curve

INNOVATION

We added an arched soffit spanning the length of the bar and painting it the same color as the walls. This curved soffit had to be created out of metal to get the shape just right. Once we had the metal structure installed, we were able to sheetrock everything in place.



Arch Install

CRAFTSMANSHIP

Full-overlay cabinets deliver a high-end Euro look, while vertically grain-matched walnut adds a seamless finish.

CRAFTSMANSHIP

We added up and down lighting on the bar to highlight any items on the top of the shelf as well as provide task lighting on the countertop.

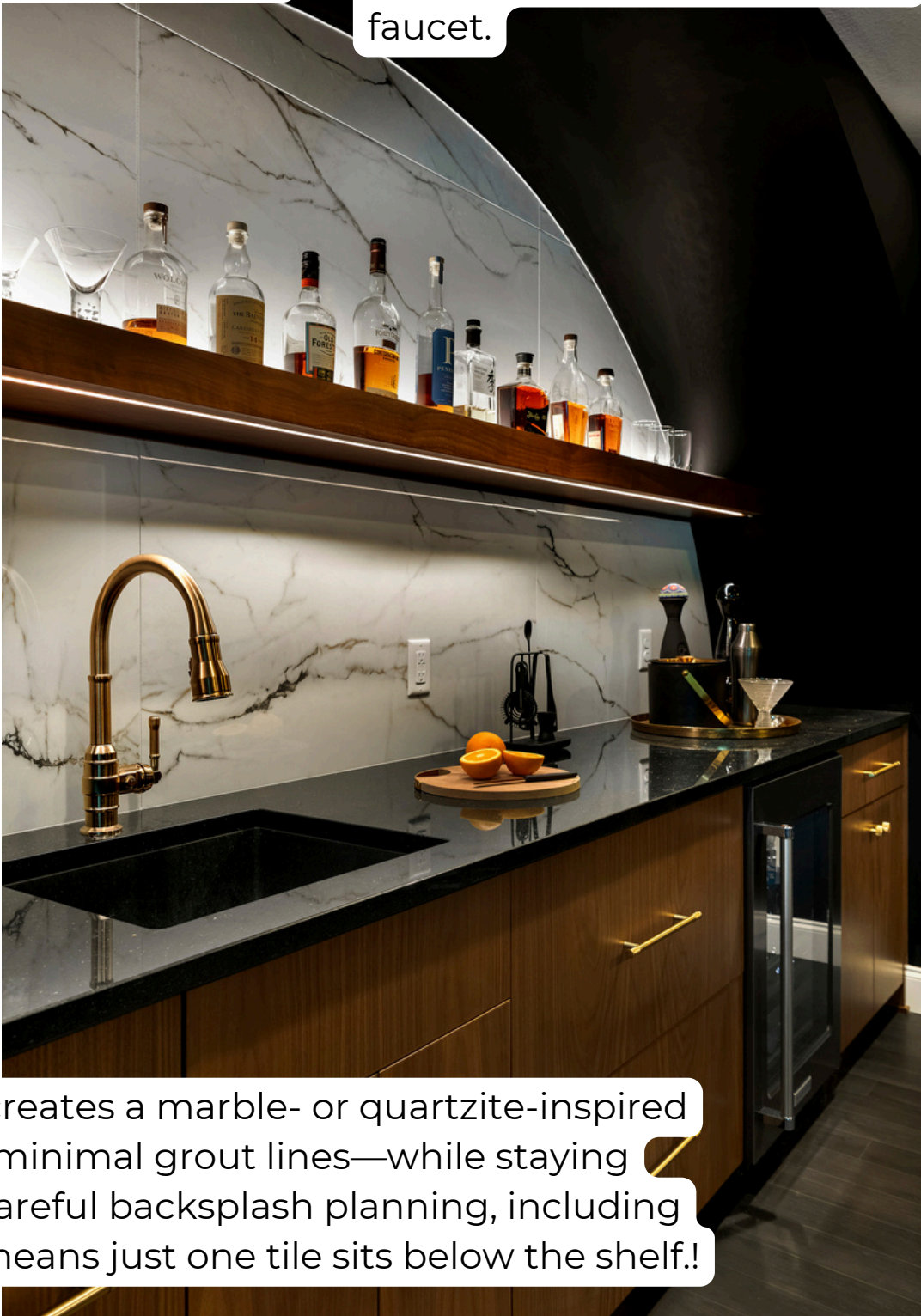
CRAFTSMANSHIP

Cabinetry was thoughtfully designed to balance the required left-aligned sink and faucet.



CRAFTSMANSHIP

Large-format tile creates a marble- or quartzite-inspired upscale look with minimal grout lines—while staying budget-friendly. Careful backsplash planning, including shelf placement, means just one tile sits below the shelf!



Aesthetics

bring the drama

The existing black walls and dark floors made the space moody and dramatic, yet lacked the warmth needed to counterbalance all the cooler, dark elements. Our goal in designing the bar was to make the bar the hero of the space, adding depth and warmth while cranking up the dial of dramatic sophistication.



AESTHETICS

The arched soffit spanning the length of the bar is painted the same color as the walls, setting the stage for dramatic impact while blending seamlessly with the surrounding space



AESTHETICS

Dark-stained walnut cabinets bring a moody, modern vibe, paired with honey bronze hardware. Knurled detailing adds a masculine edge.

AESTHETICS

The choice of a polished black granite countertop with copper flecks reinforces the luxurious feel and tone.

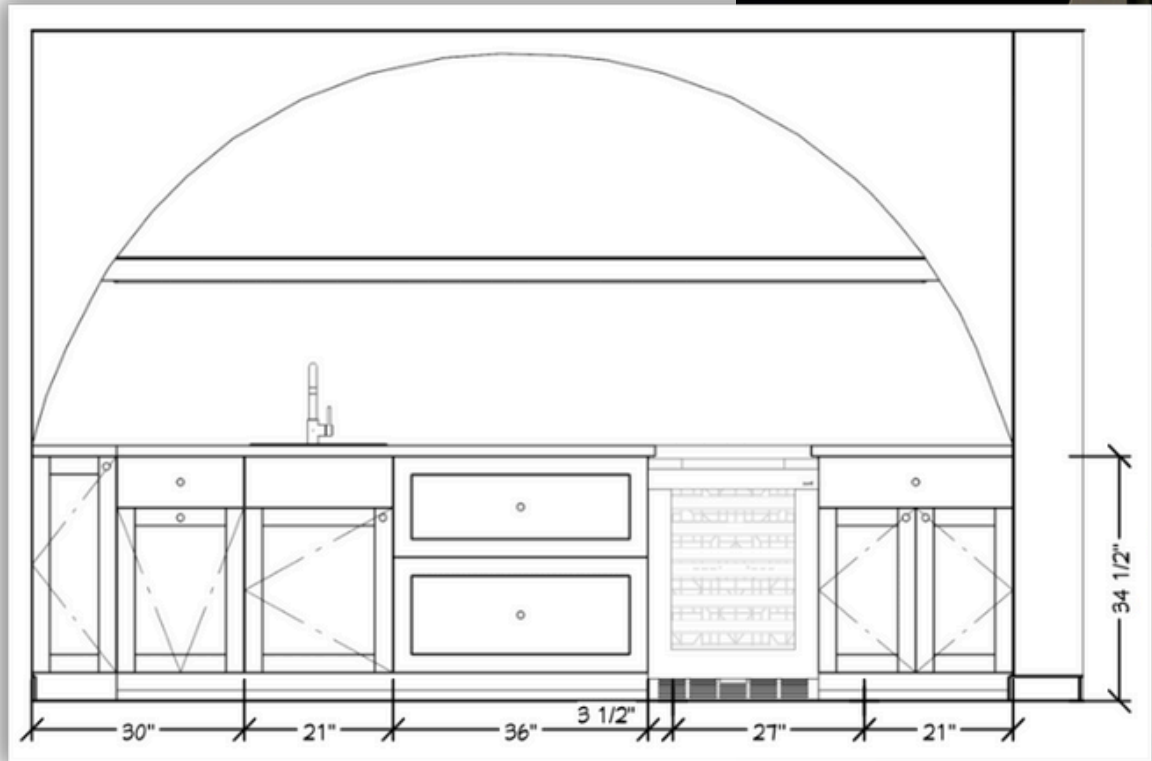


Aesthetics

thoughtful details

AESTHETICS

Lighting illuminates the bar area, highlighting the beautiful veining of the Torano Dorado Polished porcelain tile and adding needed depth to the design.



AESTHETICS

The flooring looks untouched, despite its disturbance, thanks to careful planning for its removal and re-installation.

AESTHETICS

The richness of the cabinetry centers the design, adding needed warmth while drawing your eye away from the mandatory left oriented sink location.

After