

NARI MINNESOTA – 2025 ROTY AWARDS

PROJECT: MIX IT UP

CATEGORY: KITCHEN 100,000 – \$125,000



Note: There is room for 4 stools at the island/peninsula. We opted for 3 for photography purposes.

MIX IT UP – 2025 ROTY AWARDS – KITCHEN \$100,000 - \$125,000

The initial ask for this kitchen remodel was to create a passthrough from the kitchen to the main living/dining area to create a connection between the two spaces for this young family. Additional requests also included counter seating, removing soffits, additional storage, lighting, exterior ventilation for the range, and updated finishes.

During design development, several layout options were presented. Ultimately budget dictated and the final layout prevailed. The removal of a load bearing wall and a kitchen doorway was the ultimate solution for maximum storage, function and aesthetics. The existing windows and fireplace were not to be tampered with.

The load bearing wall, existing double-sided fireplace, as well as the number and placement of existing windows presented many challenges for cabinet layout. The removal of the entire wall afforded a large second island/peninsula with seating and added storage. A post to the basement was required by engineering to carry the roof load and was wrapped with painted maple to create a cohesive look with the adjoining black cabinets. A second faux half post was added on the fireplace side for balance. The removal of a secondary opening next to the fireplace allowed for the addition of a beverage nook and more additional storage.

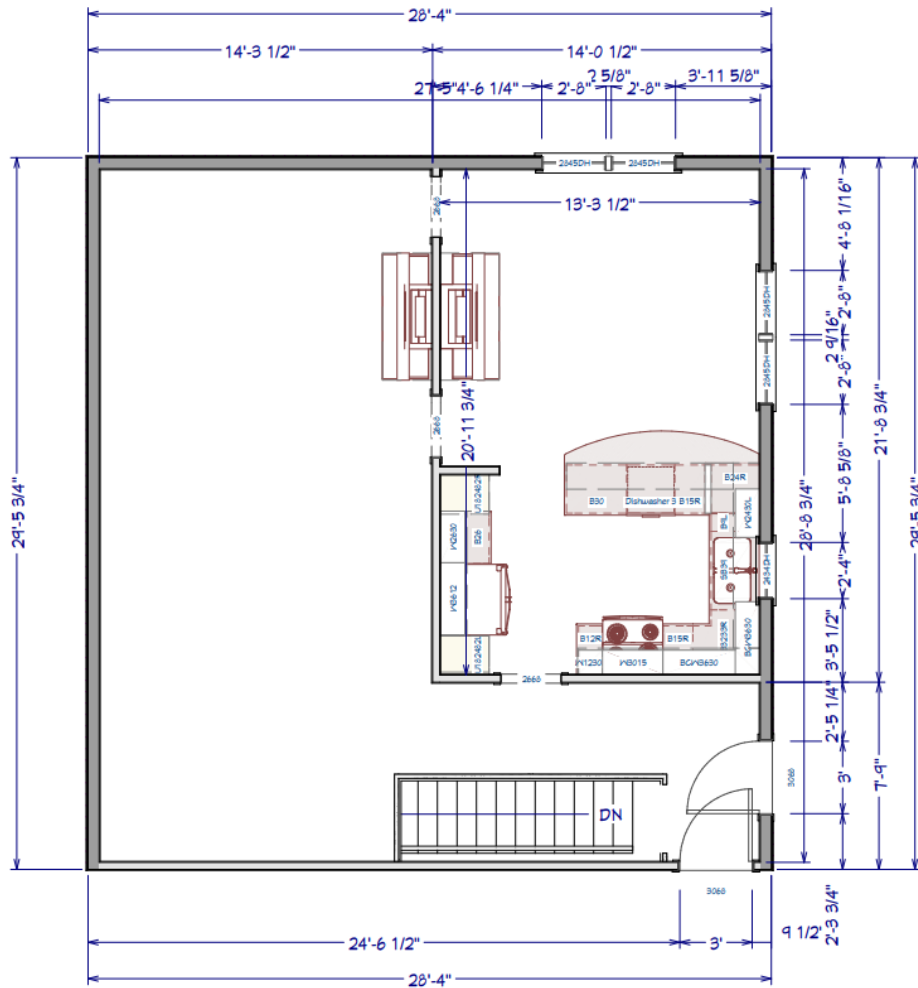
The variation of light tones in the new vinyl plank flooring adds contrast and coordinates nicely with the mix of wood shades in the space. The combination of wood finishes, slab doors, quartz countertops, and rich dark colors, bring an updated earthy vibe to the space. The simple backsplash tile compliments the mix of finishes. The result is everything this young family dreamed of and more.

NARI MINNESOTA – 2025 ROTY AWARDS

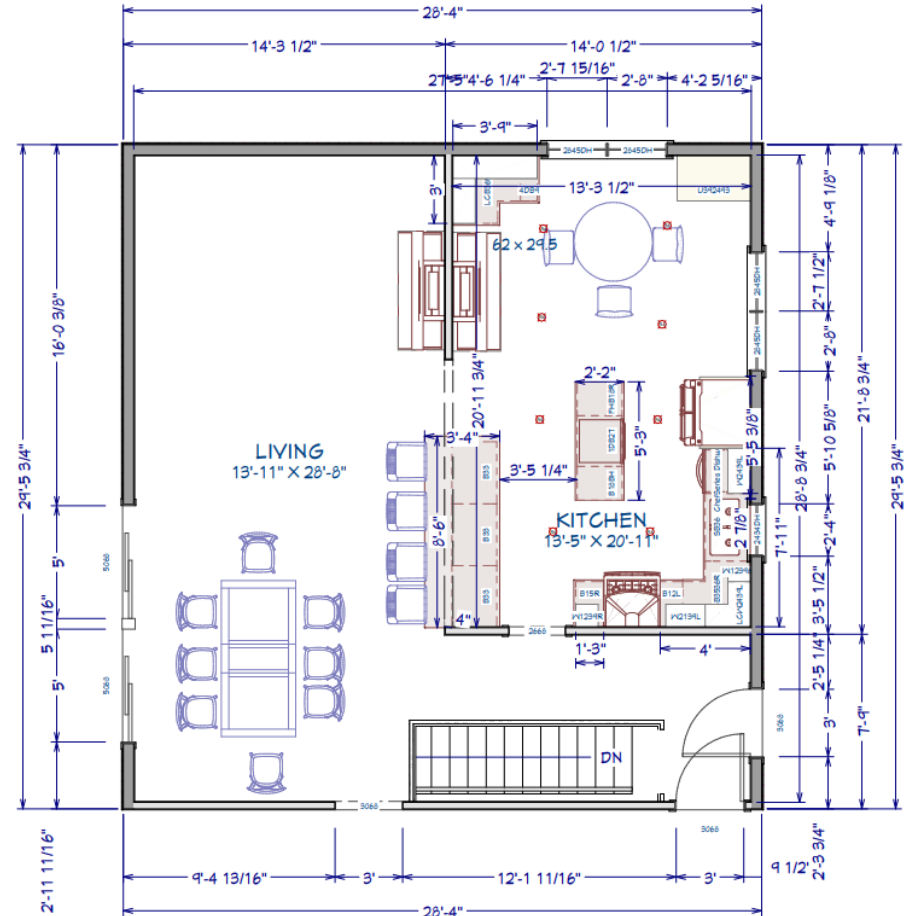
PROJECT: MIX IT UP

CATEGORY: KITCHEN 100,000 – \$125,000

BEFORE (AS BUILT PLAN)



PROPOSED PLAN



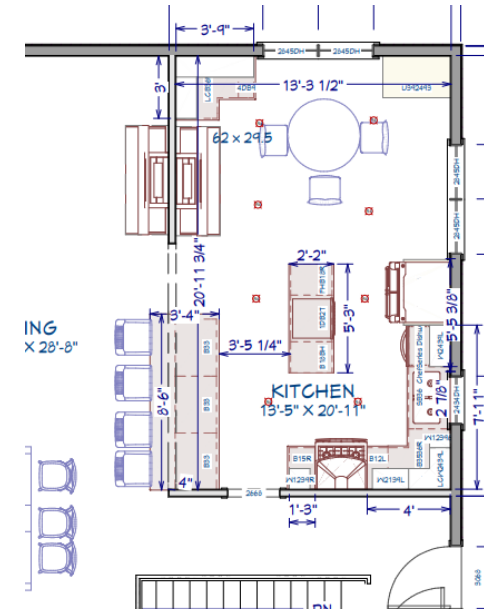
MIX IT UP – 2025 ROTY AWARDS – KITCHEN \$100,000 - \$125,000

NARI MINNESOTA – 2025 ROTY AWARDS

PROJECT: MIX IT UP

CATEGORY: KITCHEN 100,000 – \$125,000

PROPOSED – 3D



MIX IT UP – 2025 ROTY AWARDS – KITCHEN \$100,000 - \$125,000

NARI MINNESOTA – 2025 ROTY AWARDS

PROJECT: MIX IT UP

CATEGORY: KITCHEN 100,000 – \$125,000

3D – PROPOSED



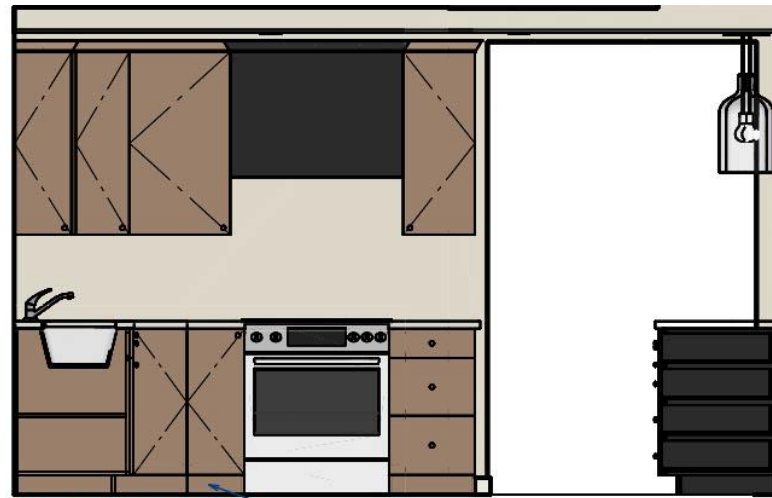
MIX IT UP – 2025 ROTY AWARDS – KITCHEN \$100,000 - \$125,000

NARI MINNESOTA – 2025 ROTY AWARDS

PROJECT: MIX IT UP

CATEGORY: KITCHEN 100,000 – \$125,000

PROPOSED – ELEVATIONS



E1 - STOVE ELEVATION

SPICE PULL OUT
448-BC-11C
Could be slightly smaller



E2 - SINK ELEVATION

Push to Open

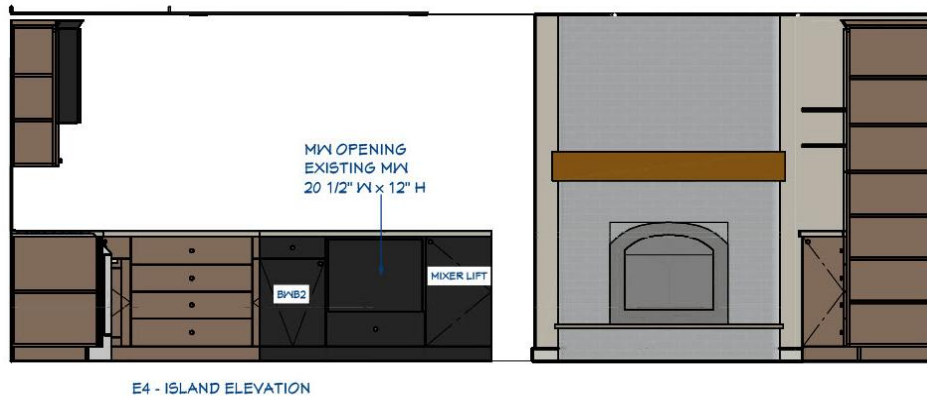
MIX IT UP – 2025 ROTY AWARDS – KITCHEN \$100,000 - \$125,000

NARI MINNESOTA – 2025 ROTY AWARDS

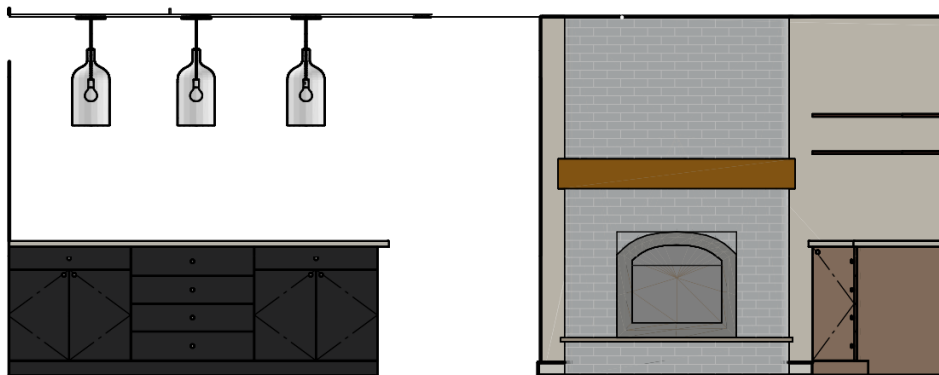
PROJECT: MIX IT UP

CATEGORY: KITCHEN 100,000 – \$125,000

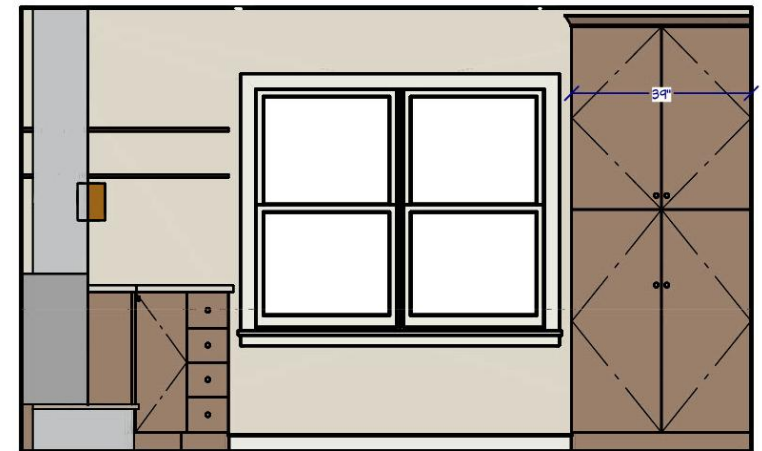
PROPOSED - ELEVATIONS



E4 - ISLAND ELEVATION



E5 - PENINSULA ELEVATION



E3 - PANTRY/CORNER ELEVATION

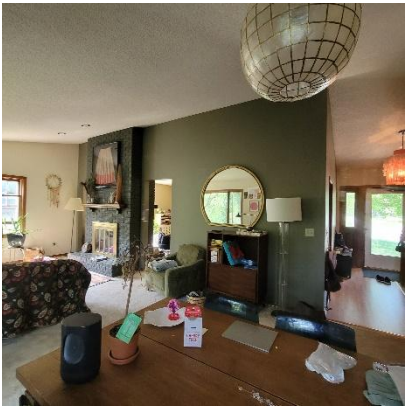
MIX IT UP – 2025 ROTY AWARDS – KITCHEN \$100,000 - \$125,000

NARI MINNESOTA – 2025 ROTY AWARDS

PROJECT: MIX IT UP

CATEGORY: KITCHEN 100,000 – \$125,000

BEFORE/AFTER



MIX IT UP – 2025 ROTY AWARDS – KITCHEN \$100,000 - \$125,000

NARI MINNESOTA – 2025 ROTY AWARDS

PROJECT: MIX IT UP

CATEGORY: KITCHEN 100,000 – \$125,000

BEFORE/AFTER



MIX IT UP – 2025 ROTY AWARDS – KITCHEN \$100,000 - \$125,000

NARI MINNESOTA – 2025 ROTY AWARDS

PROJECT: MIX IT UP

CATEGORY: KITCHEN 100,000 – \$125,000

BEFORE/AFTER



MIX IT UP – 2025 ROTY AWARDS – KITCHEN \$100,000 - \$125,000

NARI MINNESOTA – 2025 ROTY AWARDS

PROJECT: MIX IT UP

CATEGORY: KITCHEN 100,000 – \$125,000

BEFORE/AFTER



MIX IT UP – 2025 ROTY AWARDS – KITCHEN \$100,000 - \$125,000

NARI MINNESOTA – 2025 ROTY AWARDS

PROJECT: MIX IT UP

CATEGORY: KITCHEN 100,000 – \$125,000

INNOVATIVE SOLUTIONS AND CRAFTSMANSHIP

- Mixer lift & pull-out spice cabinet
- LED Recessed and Under Cabinet Lighting
- Wrap post and add secondary faux post on fireplace side for balance.
- Removed second doorway next to fireplace to create a beverage nook.
- Push to open cabinet (upper right of sink) to maximize storage
- Integrating two cabinet finishes and two countertop finishes



MIX IT UP – 2025 ROTY AWARDS – KITCHEN \$100,000 - \$125,000

NARI MINNESOTA – 2025 ROTY AWARDS

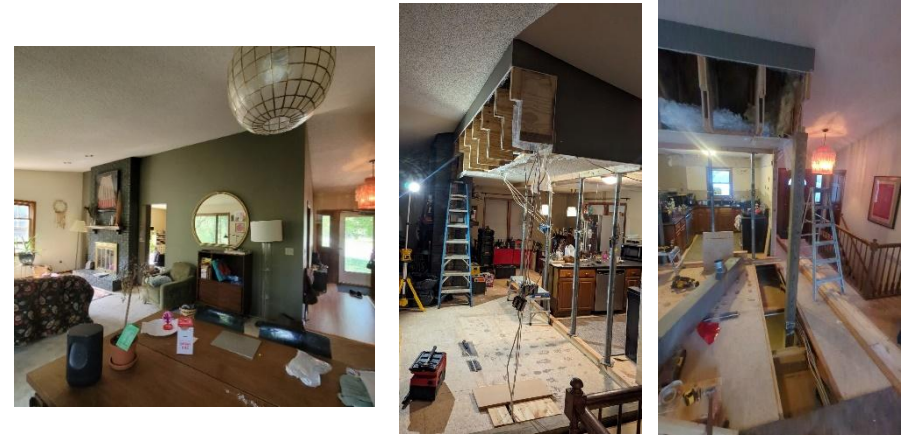
PROJECT: MIX IT UP

CATEGORY: KITCHEN 100,000 – \$125,000

PROJECT CHALLENGES AND PHOTOS



Existing windows and fireplace must remain as is. This made the cabinet layout challenging. Multiple layouts were presented; budget dictated the final layout. Space was incorporated for a future dinette/craft table.



Removing the load bearing wall between kitchen and living/dining area required re-enforcing each joist and adding a post to the basement per the engineer. This also added a significant amount to the cost.



MIX IT UP – 2025 ROTY AWARDS – KITCHEN \$100,000 - \$125,000

NARI MINNESOTA – 2025 ROTY AWARDS

PROJECT: MIX IT UP

CATEGORY: KITCHEN 100,000 – \$125,000

AESTHETICS



MIX IT UP – 2025 ROTY AWARDS – KITCHEN \$100,000 - \$125,000

NARI MINNESOTA – 2025 ROTY AWARDS

PROJECT: MIX IT UP

CATEGORY: KITCHEN 100,000 – \$125,000



MIX IT UP – 2025 ROTY AWARDS – KITCHEN \$100,000 - \$125,000