



The Contempo Interior

NARI MINNESOTA | RotY AWARDS

RESIDENTIAL INTERIOR \$250,000 - \$500,000

Overview

This main floor remodel transforms a dated 1990s home into a modern, sophisticated living space. The new kitchen showcases high-end appliances paired with stunning Cambria details, creating a functional yet luxurious centerpiece. Sleek walnut cabinets add warmth and depth, while clean lines throughout highlight a contemporary aesthetic. In the living room, a striking porcelain slab surrounds a modern fireplace, becoming a bold focal point that elevates the space. Thoughtful design choices balance timeless materials with fresh, streamlined finishes, seamlessly blending comfort and style. The result is a home that feels both current and inviting, perfect for modern living.





Client Needs

When these homeowners approached the project, their goal was clear: to transform a dated 1990s residence into a contemporary sanctuary that effortlessly combines elegance, comfort, and functionality. They imagined a kitchen that not only dazzles with high-end appliances and exquisite Cambria surfaces but also serves as the heart of the home, where cooking and gathering feel equally luxurious and intuitive. Warm walnut cabinetry was chosen to introduce depth and texture, while clean, minimalist lines throughout convey a sense of modern calm. In the living room, they sought a striking statement piece—a fireplace encased in a dramatic porcelain slab—that would anchor the space and create a lasting impression. Above all, the clients wanted a home where timeless materials meet sleek, refined finishes, resulting in a space that feels polished, inviting, and perfectly in tune with contemporary living and entertaining.

Aesthetics

- Sleek & Contemporary
- Bold Quartz Countertops
- Clean Lines
- Dramatic Modern Fireplace
- Natural Wood Tones



Innovation & Craftsmanship

Every element of this remodel reflects a commitment to design excellence and masterful craftsmanship. Custom walnut cabinetry was thoughtfully designed for both the kitchen and living areas, including tailored cabinetry around the fireplace enhanced with accent lighting & wallpaper, creating a warm, sculptural focal point.

The kitchen features a waterfall-edge island, a quartz-wrapped vent hood, and a quartz-wrapped niche, showcasing precision, modern elegance, and functional creativity. Every material, joinery detail, and finish was carefully considered and executed, reflecting a dedication to quality and artistry. The result is a home where forward-thinking design meets enduring craftsmanship, delivering spaces that are both visually stunning and highly functional.



Functionality

This remodel was designed to combine modern elegance with everyday practicality. The kitchen, equipped with high-end appliances and a convenient pot filler, serves as the heart of the home for cooking, entertaining, and family gatherings. A large pantry and custom dining table that complements the kitchen finishes provide both organization and cohesive style. The separate bar area offers an additional space for entertaining guests, while custom cabinetry and thoughtful layouts ensure seamless flow throughout the home. Every detail balances functionality and design, creating a space that is as practical as it is visually inviting.





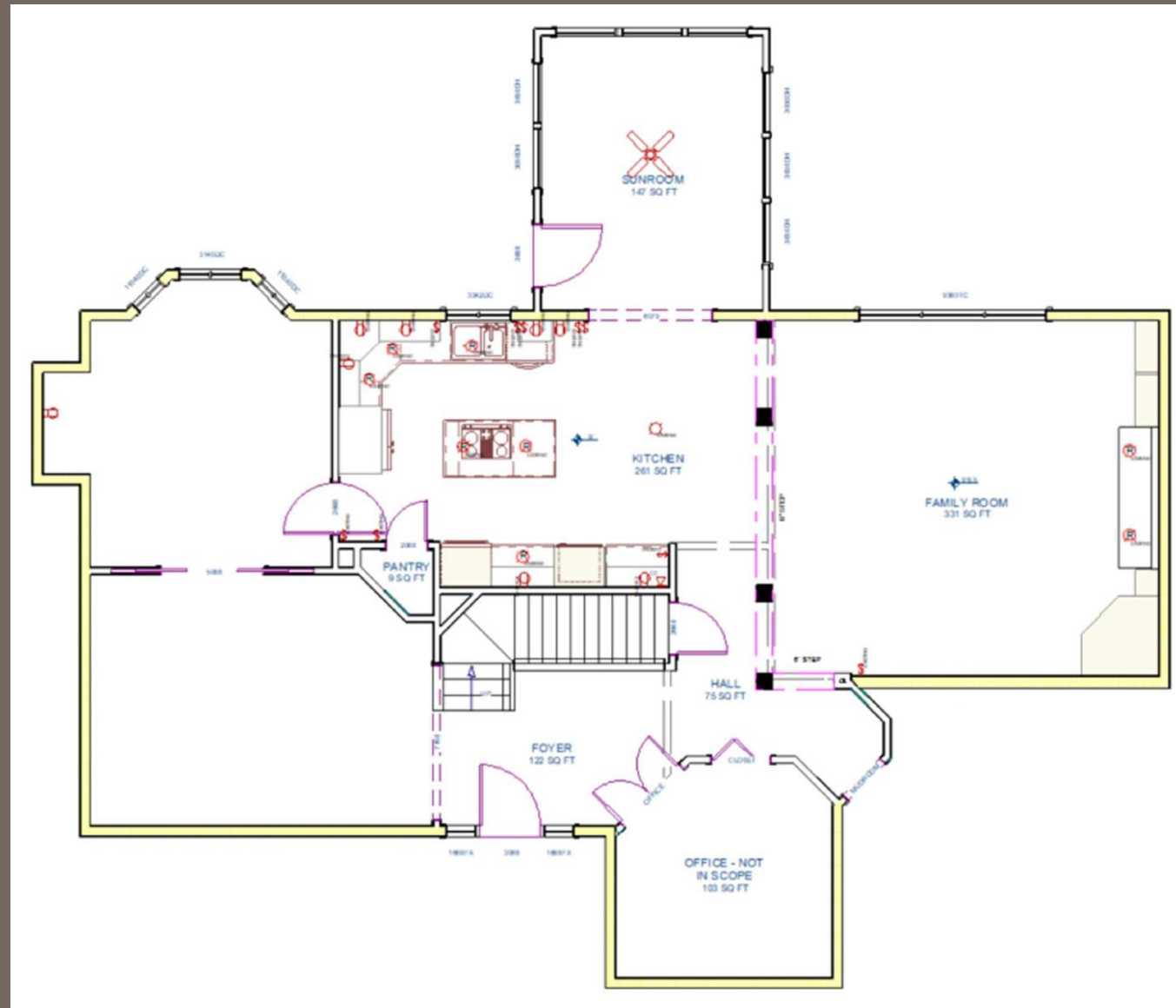


Key Features

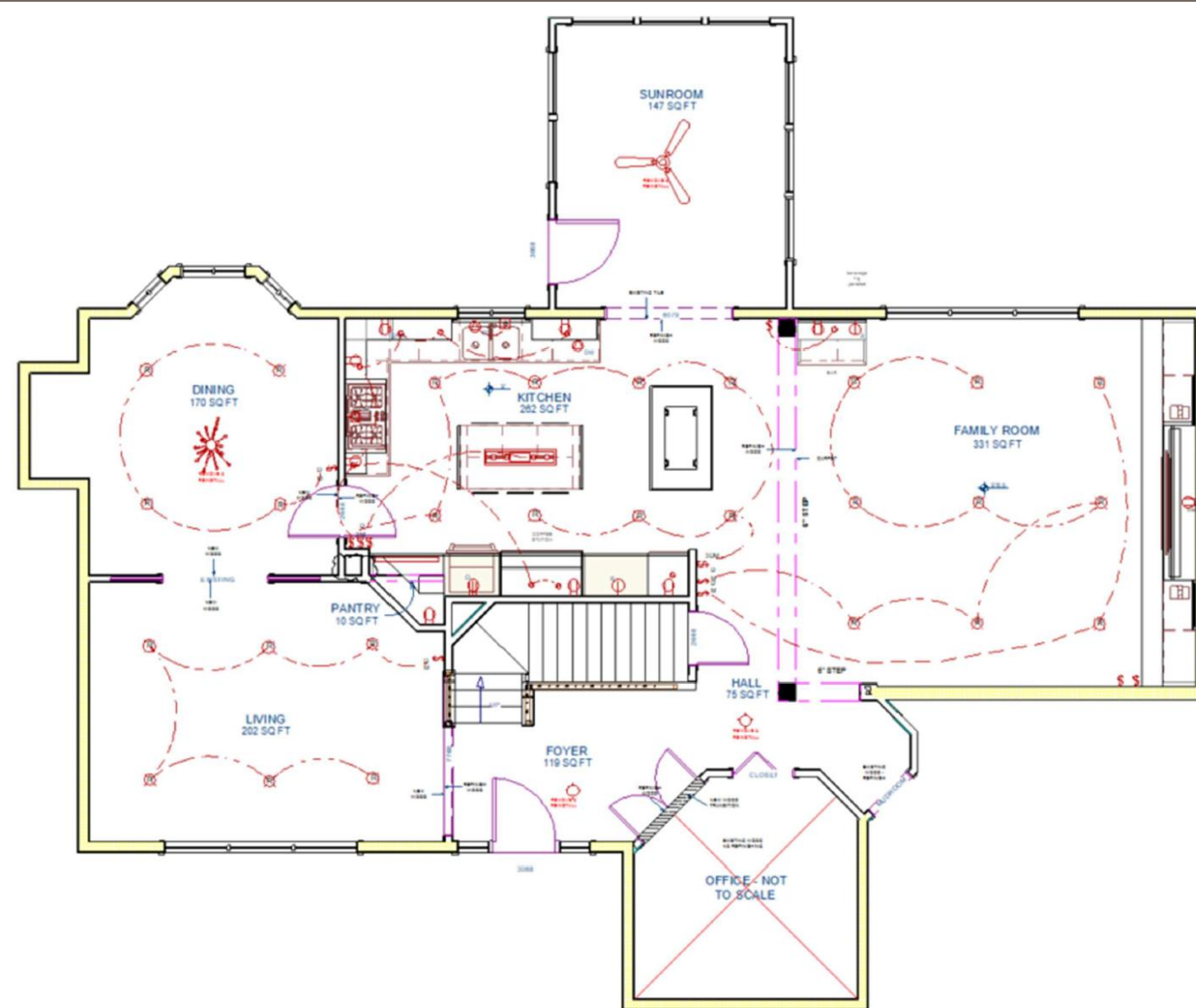
- Quartz Wrapped Vent Hood
- Custom Cabinetry
- Waterfall Quartz Detail at the Island
- Custom Fireplace Elevation
- Accent Lighting & Wallpaper
- Layered Lighting
- Custom Dining Table
- Integrated Refrigerator
- Custom Pantry
- Quartz Wrapped Coffee Bar with Beverage Faucet
- Custom Bar in the Living Room



Before Floor Plan



After Floor Plan



Before



After



Before



After



Before



After



Before



After



Before



After



Before



After



Before



After



Before



After



Before



After

