



Starry Sips & Scenes

NARI MINNESOTA - 2025 ROTY AWARDS

Starry Sips & Scenes

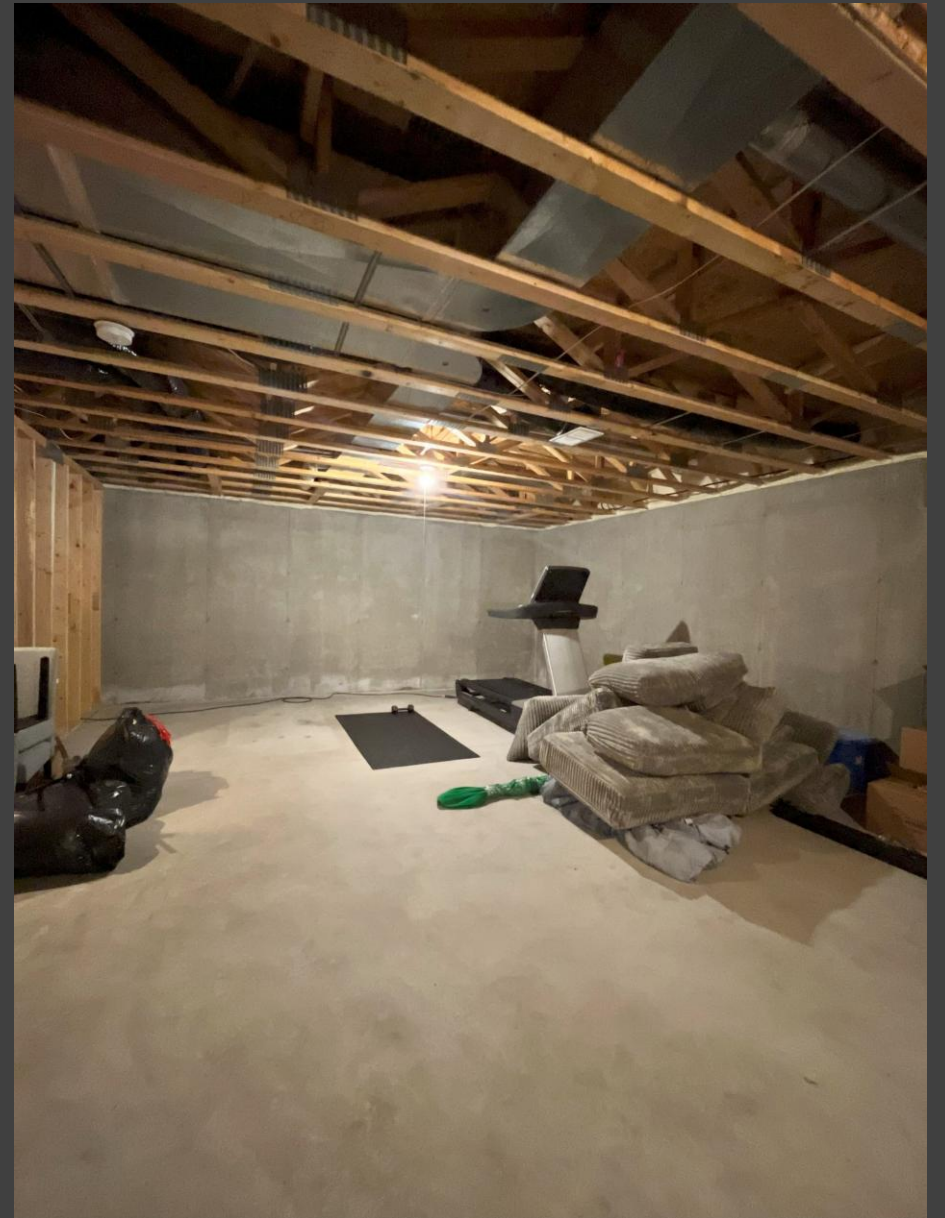
Basement \$100,000 to \$250,000

This basement transformation turned a bare space into the ultimate luxury retreat. Designed as a high-end speakeasy and theater, it features a custom bar, surround sound system, and an immersive entertainment area perfect for hosting. Beyond the theater, the basement offers a private workout room, bedroom, and an infrared sauna. Blending style and function, this project created a one-of-a-kind destination right at home.

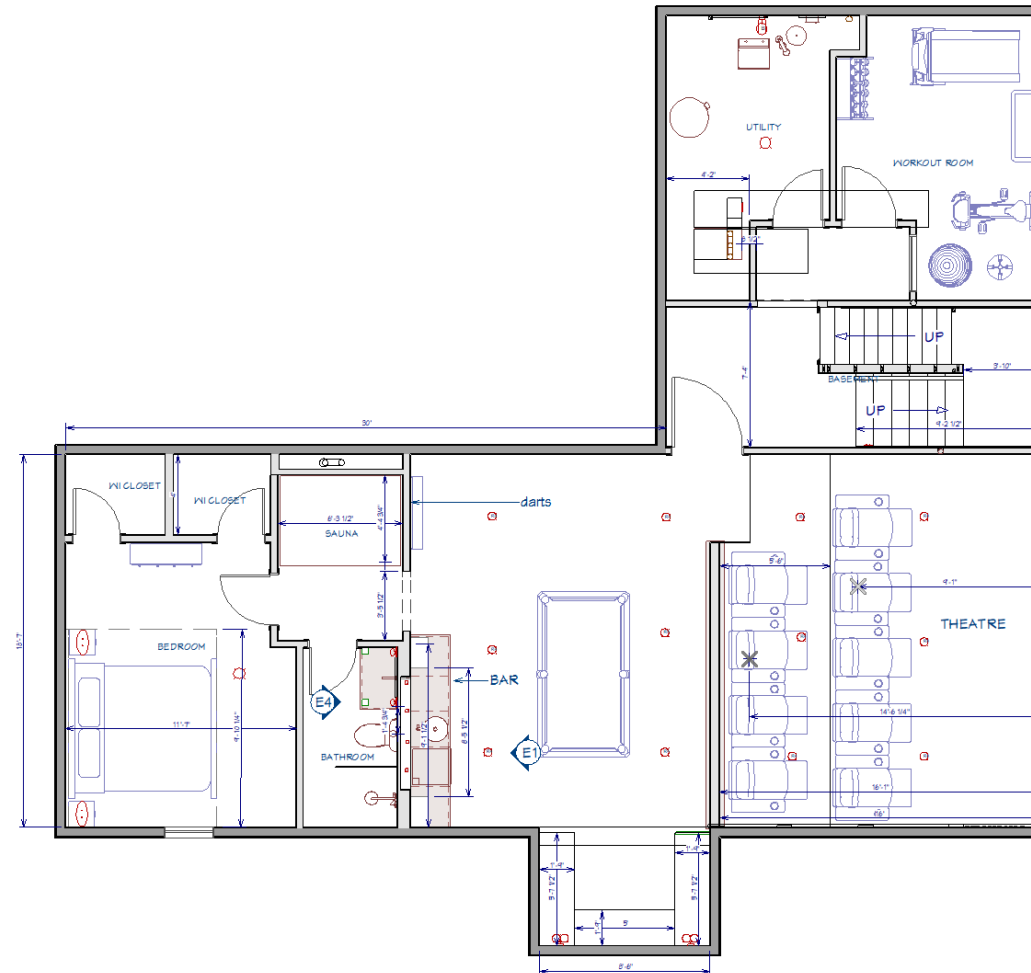
Project Goals

- Create a multifunctional, luxury space designed for both entertainment and relaxation
- Key objectives included building a high-end theater with surround sound, mood lighting, and ample seating for watch parties and events
- Designing a stylish bar for hosting gatherings
- Adding a private exercise room
- Incorporating a comfortable guest bedroom suite with dedicated space; and installing a sauna conveniently located near the bathroom

Before



Floor Plan



Framing



TA-DA!



TA-DA!



TA-DA!





Guest Bedroom & Bath

Gym & Infrared Sauna



FUNCTIONALITY



- The functionality of this basement was carefully designed to balance entertainment, comfort, and privacy. The layout flows seamlessly, with the wet bar serving as a central hub for hosting, while the theater, workout room, bedroom, and sauna are thoughtfully positioned to maximize both accessibility and separation of spaces.
- Multiple lighting options—from ambient mood lighting to dynamic entertainment and bar lighting—enhance flexibility and atmosphere for any occasion.
- Being underground, the basement naturally provides privacy and a cozy. This felt like the perfect opportunity for a speakeasy - making it both inviting and highly functional for entertaining or relaxation.

MAKING THE MOMENT (AESTHETICS)

- **Color Palette:** A cohesive blend of moody neutrals and bold accents, with space grey color-drenched in the theater, gold textured wallpaper for the speakeasy, real clay brick for the entrance wall, coral in the workout room, and ocean blue in the bedroom.
- **Materials & Texture:** Rich textured wallpaper, sleek painted finishes, and layered lighting add depth and visual interest throughout.
- **Lighting:** Flexible options ranging from ambient to entertainment-focused lighting create mood, highlight focal points, and enhance functionality.
- **Balance & Proportion:** Each space is designed with purpose, balancing intimate, cozy areas with open, social gathering zones.
- **Focal Points:** The speakeasy booth with gold wallpaper and the theater with mood lighting serve as standout features.
- **Unity & Harmony:** Despite varied colors and functions, the design elements tie together to create a unified, luxury entertainment space.
- **Contrast:** Darker tones in the theater contrast with brighter, vibrant colors in the fitness and guest areas, bringing character.



INNOVATION

- **Authentic Brick Charm on a Budget** – We sourced genuine clay brick and had it cut thin for interior use, capturing the timeless character of masonry while staying cost-conscious.
- **Cinematic Starry Sky** – A custom star panel ceiling brings the theater to life, creating a magical, immersive atmosphere that elevates every movie night.
- **Speakeasy Entrance with History** – An antique door, carefully sourced to match the design vision, sets the perfect vintage tone for the speakeasy experience.
- **Clever Solutions with Style** – Instead of letting a sump pump disrupt the flow, we designed a clean architectural wall around it and introduced a window in the gym for light and balance.
- **Nook with a Purpose** – There was an awkward inlet area that we utilized as a seating area to eat at and play games, further enhancing the speakeasy vibe.



CHALLENGES

- **Optimizing HVAC Placement** – Ensuring heating and cooling vents were strategically located to avoid interference with the projector and screen while maintaining efficient airflow.
- **Projector and Screen Integration** – Designing for optimal sightlines and screen proportions so the theater experience was consistent and immersive from every seating position.
- **Workout Room Connectivity** – Creating a light-filled, open workout space that still offered privacy, achieved by incorporating a glass door and interior window to visually connect it with the rest of the basement.
- **Efficient Furnace Access** – Developing a solution that provided convenient access to the furnace through double doors, eliminating the need for additional walls and preserving usable square footage.
- **Layered Lighting Design** – Balancing the need for a dark, cinematic environment in the theater area with flexible, layered lighting solutions that allow the basement to function for multiple purposes.





NARI MN –
2025 ROTY
AWARDS

