



# Vintage Charm

2025 NARI ROTY AWARDS

*Category: Residential Bath \$40K - \$70K*



# Project Statement

## *From Dated to Vintage*

Tucked inside a charming St. Paul home, the only bathroom with a tub, and the main bath for a growing family, soon became a daily bottleneck.

Originally clad in bold pink and black Art Deco tile, the style, along with the bathroom's amenities, no longer met the needs of the family. As the family grew, they found themselves longing for a more functional space that could accommodate multiple family members on busy mornings and evening bathtimes.

The original architectural details, like the arched shower niche, were preserved and enhanced with vertically stacked green tile and beautiful champagne bronze fixtures.

A custom walnut vanity with antique glass knobs echoes the home's vintage roots, while updated storage, a lit medicine cabinet, and recycled glass flooring add welcomed convenience.

Once bold yet outdated, this bathroom remodel transforms the space into a blend of modern efficiency and timeless charm.



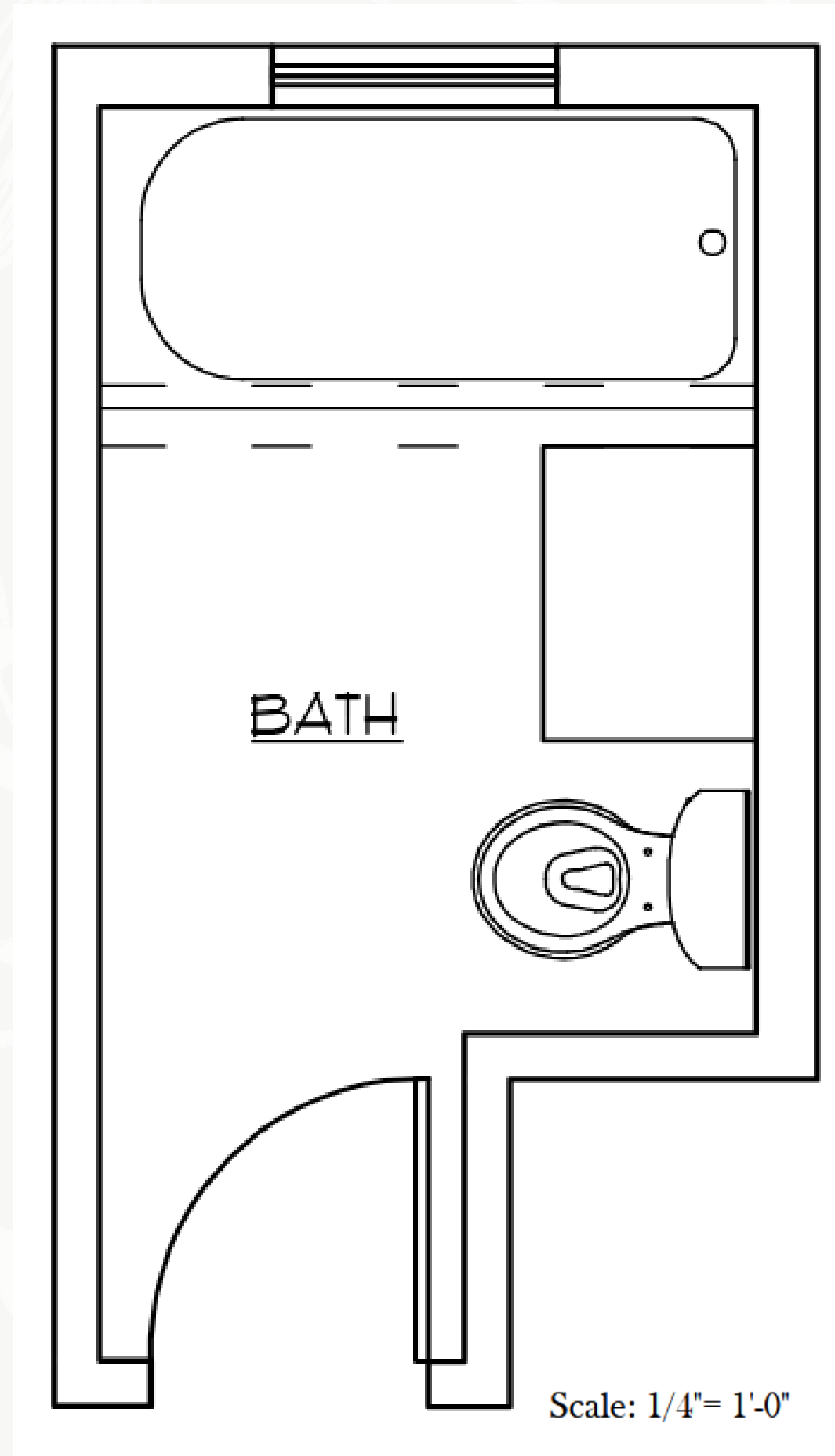
# Client Objectives

## *Enhanced Function*

The homeowners asked the design team to transform the space adding much needed function, while maintaining the bathroom's vintage charm and architectural elements..

A key request was that the layout needed to stay within the existing bathroom footprint, maximizing every square inch of the space.

Ultimately, their goal was to enhance its usability and update its aesthetic while blending the remodeled space with the homes historic charm.





# Client Objectives & Frustrations

## *Enhanced Function and Styling*



The original space was the poster child for Art Deco styling, featuring pink tile trimmed in black. The clients asked for an updated color palette and neutral styling that would still evoke a vintage feel.

Tired of not having anywhere to store anything, the clients requested increased storage in their bathroom with the challenge of working within the existing footprint.

An elongated bathtub was high on the wishlist, providing both comfort and a touch of luxury for daily use.



Functional lighting was also a priority, strategically placed to brighten the room and improve overall usability.

Making the bathroom a safe and secure space for their growing family was essential.



# After Plan

## Challenges Addressed

### CRAMPED LAYOUT AND LIMITED STORAGE

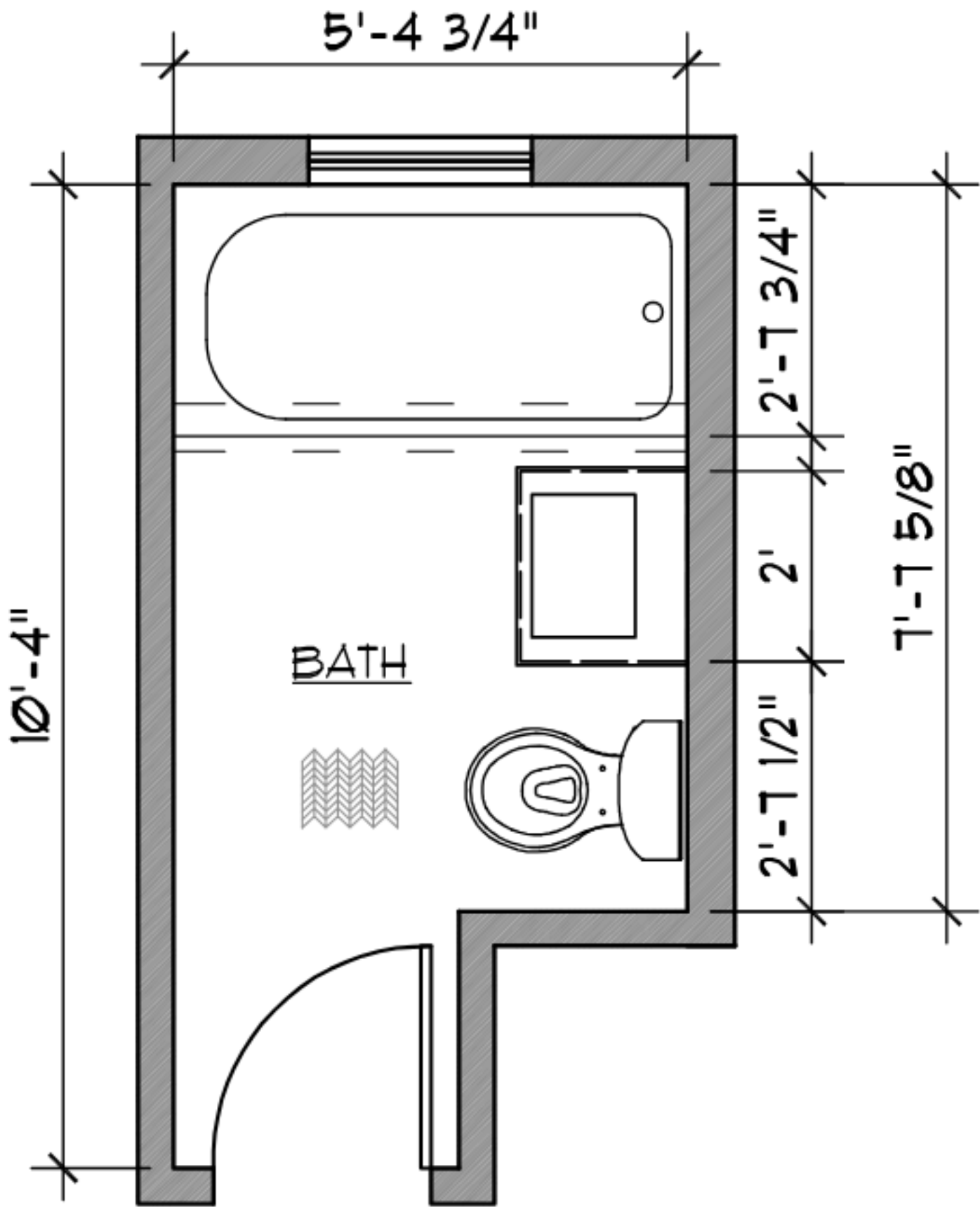
The design team encountered a cramped layout with limited storage at the beginning of the project. The solution was to add a custom walnut vanity offering deeper storage while accommodating an elongated tub.

Adding modern convenience, a new medicine cabinet with built in lighting and interior power hangs above the vanity. Adjacent to the cabinet, a custom designed hanging shelf and towel bar maximize space.

### WOOD WINDOW IN THE SHOWER

A wood-framed window inside the original shower posed ongoing risks of mold and rot.

A new moisture-resistant fiberglass window with tiled jambs and a quartz sill ensures a maintenance free solution for years to come.



Scale: 1/4"= 1'-0"

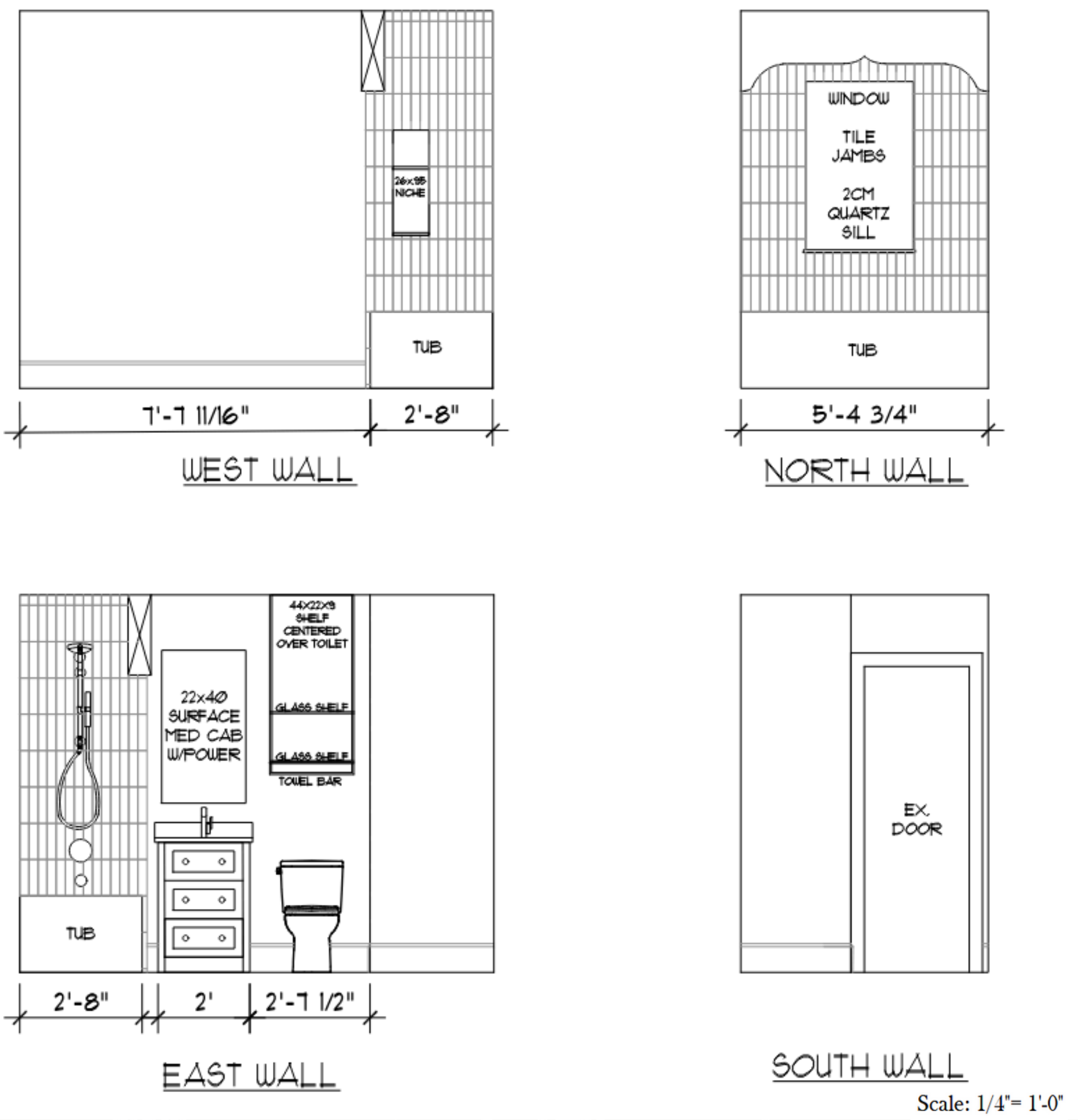
### LIGHTING

The original bathroom featured a misplaced scone whose light was obstructed when the shower curtain was closed.

Updated fixtures, including an alabaster ceiling light and lit medicine cabinet, help brighten the space.



# Elevation Details





# Functionality

## *Additional Storage*





Functionality  
*All the Extras*

Updated lighting, featuring a ceiling fixture and illuminated medicine cabinet, works with the natural light from the window to provide lighting in the room.



Hooks for hanging towels and robes.

The elongated tub stands at the ready for playtime or relaxation time



The moisture-resistant fiberglass window with tiled jambs and a quartz sill is maintenance free.

Low-maintenance recycled glass floor tile adds durability while accommodating the room's layout.



# Innovation & Craftsmanship

## *The Details*





# Aesthetics

## *Vintage Appeal*

The bold Art Deco elements of the original bathroom gave way to a fresh, modern design that seamlessly blends classic charm with contemporary convenience. Bright, neutral tones replace the pink and black tile, creating a light and fresh atmosphere.

Woven wallpaper softens the room's hard surfaces, and a sculptural alabaster stone ceiling light provides a touch of elegance, transforming the space with function while paying homage to the home's historic origins.

The final result is timeless, efficient, and uniquely personal with a bit of vintage charm.

