

# Pathways For All

2024 – 2026

**NACCE**

THE IMPACT OF ENTREPRENEURSHIP

NATIONAL ASSOCIATION  
FOR COMMUNITY COLLEGE  
**ENTREPRENEURSHIP**





*"Hard work and soft skills are essential to successfully navigate new pathways to success. Here at Roane State, we always ask our students about passion because we believe human beings are passionate about things that make them tick...whether it's lifelong learning, serving others, or exploring new ways of doing things."*

**CHRIS WHALEY, J.D.**  
**BOARD CHAIR, NACCE**  
**PRESIDENT, ROANE STATE COMMUNITY COLLEGE**

## Board of Directors

### Board Chair

**Dr. Chris Whaley**  
 President  
 Roane State Community  
 College - TN

### Immediate Past Chair

**Dr. Steven Schulz**  
 Retired President  
 North Iowa Area Community  
 College - IA

### Treasurer/Secretary

**Dr. Sharon Pierce**  
 President  
 Minneapolis College - MN

**Dr. Lisa Avery**  
 President  
 Linn-Benton Community  
 College - OR

**Dr. Michael Baston**  
 President  
 Cuyahoga Community  
 College - OH

**Dr. Amy Diaz**  
 President  
 GateWay Community  
 College - AZ

**Dr. Jermaine Ford**  
 President  
 Florence-Darlington  
 Technical College - SC

**Dr. Brenda Hellyer**  
 Chancellor  
 San Jacinto College - TX

**Dr. Torie Jackson**  
 President  
 West Virginia University  
 Parkersburg - WV

**Mr. Jee Hang Lee**  
 President and CEO  
 Association of Community  
 College Trustees -  
 Washington, D.C.

**Dr. Richard MacLennan**  
 Chancellor, Ventura County  
 Community College  
 District - CA

**Dr. James Murdaugh**  
 President  
 Tallahassee Community College - FL

**Dr. Nick Nissley**  
 President  
 Northwestern Michigan  
 College - MI

**Dr. Joe Schaffer**  
 President  
 Laramie County Community  
 College - WY

**Ms. Jen Worth**  
 Senior Vice President,  
 Workforce and Economic  
 Development  
 American Association of  
 Community Colleges -  
 Washington, D.C.

### NACCE Emeritus Advisory Committee

**Dr. Gail Carberry**  
 Retired President  
 Quinsigamond Community  
 College - MA

**Dr. Kevin Drumm**  
 President Emeritus  
 SUNY Broome Community  
 College - NY

**Dr. Angeline Godwin**  
 Retired President  
 Patrick & Henry  
 Community College - VA

**Dr. Jim Jacobs**  
 President Emeritus  
 Macomb Community College - MI

**Dr. Edwin Massey**  
 President Emeritus  
 Indian River State College - FL

**Dr. Susan May**  
 President Emeritus  
 Fox Valley Technical College - WI

**Dr. Ron Thomas**  
 Retired President  
 Dakota County Technical  
 College - MN



NATIONAL ASSOCIATION  
 FOR COMMUNITY COLLEGE  
**ENTREPRENEURSHIP**

# → Celebrating

# Innovation and Collaboration

Dear NACCE Supporter,

At NACCE, we celebrate innovation and collaboration in many ways. One example is our acquisition of SkillPointe, a pioneering technology platform dedicated to helping individuals find pathways to skills-based careers.

As a result, thousands of individuals from all segments of society are making meaningful career and educational choices for the future while fueling community college enrollment and local economic growth.

Through collaborations like this and many more, NACCE is continually innovating, creating dynamic new opportunities for individuals. For instance:

- Since 2017, we've awarded more than \$35 million in grants to member colleges.
- We've expanded the number of new businesses incubated in our member colleges from just a handful 10 years ago to thousands in recent years through the work of our colleges and the Everyday Entrepreneur program and fund.
- Over the past five years, NACCE, in partnership with the Ratcliffe Foundation, has awarded \$500,000 to entrepreneurial teams at more than 30 member colleges.

We do this work together with members, partners, supporters, and community leaders who assist us in identifying and creating purpose-built pathways that help people and communities to thrive.

Innovation and collaboration are cultural drivers for NACCE. Like an entrepreneur, our ability to pivot and drive opportunities is always top of mind as is finding ways to contribute to our members' and students' success. Together, collaboration and innovation create a powerful GPS for our future.

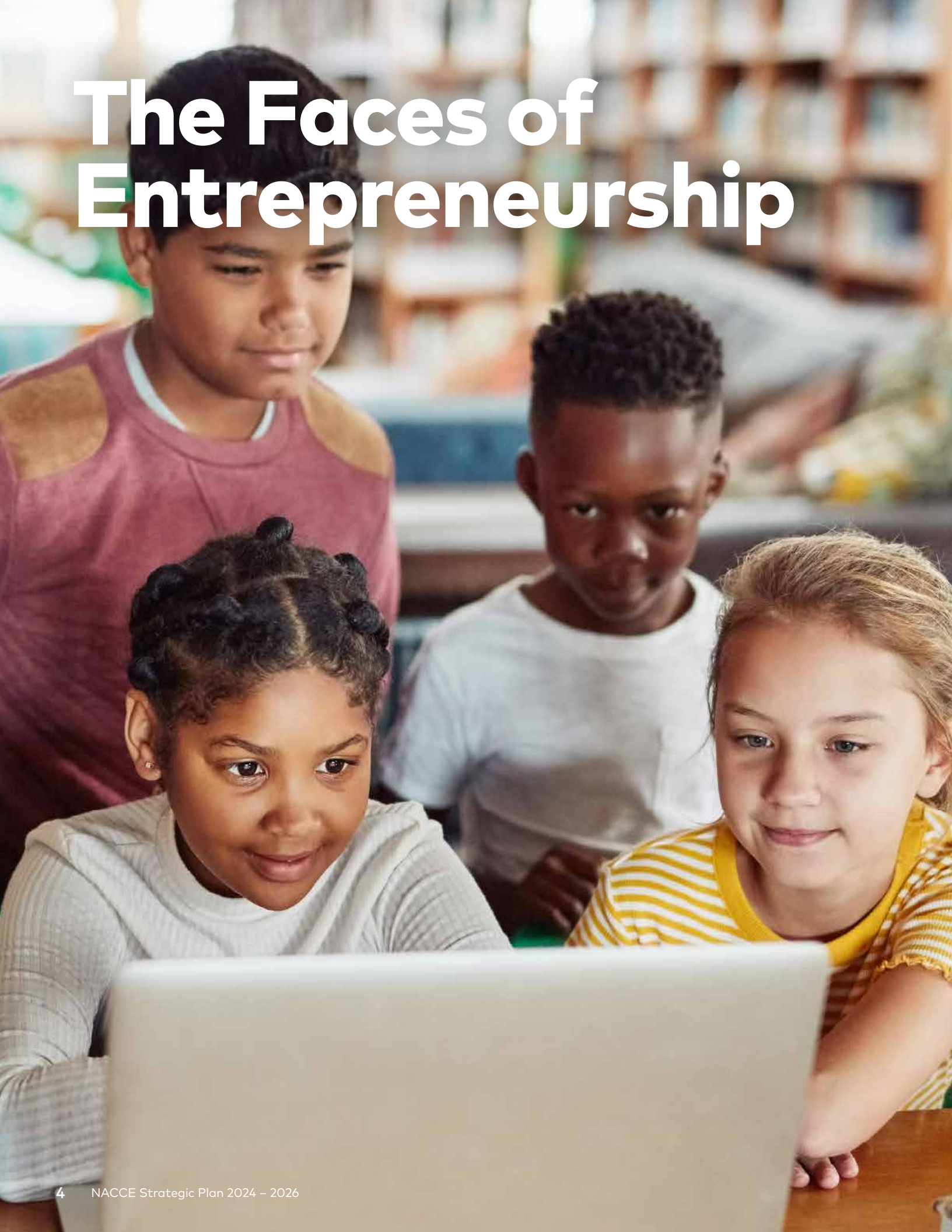
Sincerely,



Rebecca A. Corbin, Ed.D.  
President & CEO, NACCE



# The Faces of Entrepreneurship





## Mission, Philosophy, Vision

Our mission is to engage members through entrepreneurial thinking and innovative action. This takes place in classrooms and makerspaces, in learning labs and training centers, and in communities throughout the country. NACCE's vision is to uplift communities by elevating prosperity.

## Who We Are

Every college and individual has an extraordinary capacity to innovate through entrepreneurial thinking and action. This is NACCE's guiding principle as North America's leading advocate for entrepreneurship education and programming for community colleges. From our leadership team of academic trailblazers, to our individual members who break new ground each day, we lead the way for community and technical colleges to infuse innovation and entrepreneurship into everything they do.

## How NACCE Practices Entrepreneurship

Taking on new challenges, like acquiring SkillPointe, affirms NACCE's commitment to "practicing entrepreneurship." Entrepreneurship is learned in many ways beyond the classroom. Through practice, mentorship, and innovative thinking and action, we nurture entrepreneurial leaders of tomorrow.

## Why NACCE?

Today's community college model has been transformed to meet evolving and demographic needs in new and creative ways. NACCE, SkillPointe, and our members are ready to meet this challenge! Join us.

# Pathways For All



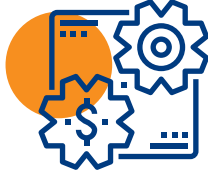
# The Strategic Vision

A young girl with blonde hair, wearing a white patterned dress, is shown from the chest up. She is wearing a black VR headset and has a slight smile on her face. Her hands are visible, holding the sides of the headset. The background is a blurred indoor setting, possibly a library or a store, with bookshelves visible. The overall lighting is warm and soft. The title 'The Strategic Vision' is written in a large, bold, white sans-serif font in the upper left quadrant of the image.

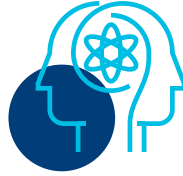


# The Strategic Plan

NACCE's Strategic Plan 2024 was updated at the annual NACCE board retreat and is the underpinning of our bold vision for the future. It includes these initiatives:



NACCE serves as a vital bridge and funding mechanism for community colleges.



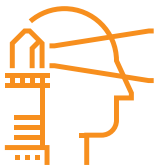
We help inspire community college leaders to think creatively, take risks, and tap entrepreneurial thinking to solve challenges.



We help build enthusiasm and create dynamic cultures in colleges and communities.

## Strategic Initiatives

**The Leadership Academy** is breaking ground with a new professional development opportunity focused on empowering future leaders with entrepreneurial mindset training, multitiered certifications, skill-based learning, and industry and community leader involvement through a regional approach.



**Pathways to Prosperity Summit** The new and evolving “SHIFT” prototypes have been reimagined with advancement, workforce, and industry leaders to provide timely and relevant content.

**Workforce and Academic Transformation** NACCE offers its members and partners many resources. A few of these include: groundbreaking books on entrepreneurship and innovation; a quarterly magazine, *Community College Entrepreneurship*; webinars; an annual conference; technical assistance; grant-funded programs, including the “Pitch for the Trades” competition; and technology platforms like SkillPointe.



# Why Become a NACCE Partner?

**The benefits of working with NACCE are noteworthy.** Revenue raised from partners fuels the growth of community colleges and local communities. NACCE partners are part of an international network of subject-matter experts on a range of innovation and entrepreneurial topics. Members also gain access to an interactive database of entrepreneurial best practices — and practitioners — plus the advanced technology platform, SkillPointe, which provides skills-based career opportunities and options that contribute to student success. In addition:

- Joining NACCE helps our partners **influence and enhance student success.**
- NACCE partners achieve **social responsibility** and **philanthropic goals** efficiently and in tangible, demonstrable ways that **positively impact individuals** and **communities.**
- Supporters are invited to participate in a **vital network** of more than **1,100 community colleges** and **10,000 entrepreneurship educators.**
- Partnering provides the opportunity to help **improve economic prosperity** in local communities.

## Learn More

Representing a dynamic community of technical and community colleges and universities, including faculty, staff, administrators, and college foundations, NACCE boldly embraces a vision of exploration and prosperity for all by providing unique opportunities and attracting new audiences to entrepreneurship.



**NACCE**  
THE IMPACT OF ENTREPRENEURSHIP

**Contact NACCE about  
membership, partnership,  
or sponsorship opportunities:**  
email [membership@nacce.com](mailto:membership@nacce.com)  
or visit us at [nacce.com](http://nacce.com).

**NACCE**  
THE IMPACT OF ENTREPRENEURSHIP

NATIONAL ASSOCIATION  
FOR COMMUNITY COLLEGE  
**ENTREPRENEURSHIP**

**nacce.com**

3434 Kildaire Farm Road · Cary, NC 27518  
**(413) 306-3131** (Membership)  
**(984) 206-1329** (Events & General Information)

NACCE is a 501(c)(3), tax-exempt organization

Follow @NACCE



**#WEARENACCE**

**NACCE**  
THE IMPACT OF ENTREPRENEURSHIP